

**REPORT ON THE  
REMOVAL OF A  
GRANITE BLOCK**

**DESERT ROSE  
PROPERTY**

2.82832

**STEWART TOWNSHIP,  
ONTARIO**

*ym*

**N.T.S. 31 – L/11**

**RECEIVED**  
AUG 15 2006  
GEOSCIENCE ASSESSMENT  
OFFICE

**By:  
RAYMOND LASHBROOK**

**August 9, 2006**

PROVINCIAL RECORDING  
OFFICE - SUDBURY  
**RECEIVED**  
AUG 15 2006  
A.M. P.M.  
7 | 8 | 9 | 10 | 11 | 12 | 1 | 2 | 3 | 4 | 5 | 6

## **TABLE OF CONTENTS**

	<b><u>Page</u></b>
Introduction	1
Property Location and Access	2
Property	2
Claim Map	Fig. 1
Property Map	Fig. 2
General Geology	3
Previous Work	3
Property Geology	4
2006 Program	5
Conclusion	6
Recommendations	6
Statements of Qualifications	

## **INTRODUCTION**

A 1– day program of using a plugger and wedges to remove an ~ 75 pound sample was conducted on a claim in Stewart Township, approximately 30 kilometers by road from North Bay, Ontario. The property has potential for producing large blocks (15 tons) for use in the building stone industry. Numerous outcrops with areas of joint free granite exist on the property.

The following report covers this program.

## **PROPERTY LOCATION AND ACCESS**

The Desert Rose Property is located in the Township of Stewart, N.T.S. 31 – L/11, approximately 30 kilometers by road from North Bay. Access is gained by traveling North on Highway 11 to a bush road called the Sand Dam Road at the Gibson Mill and then onto the Notman Road. This logging road trends North-East through the central portion of this property.

## **PROPERTY**

The property consists of one 16 hectare claim numbered 1210899. The property is owned by:

Raymond Lashbrook

973 Pine Creek Road, South, R.R. #1

Callander ON P0H 1H0

The property was recorded on June 09, 1997.

# CLAIM LOCATION MAP STEWART TWP.

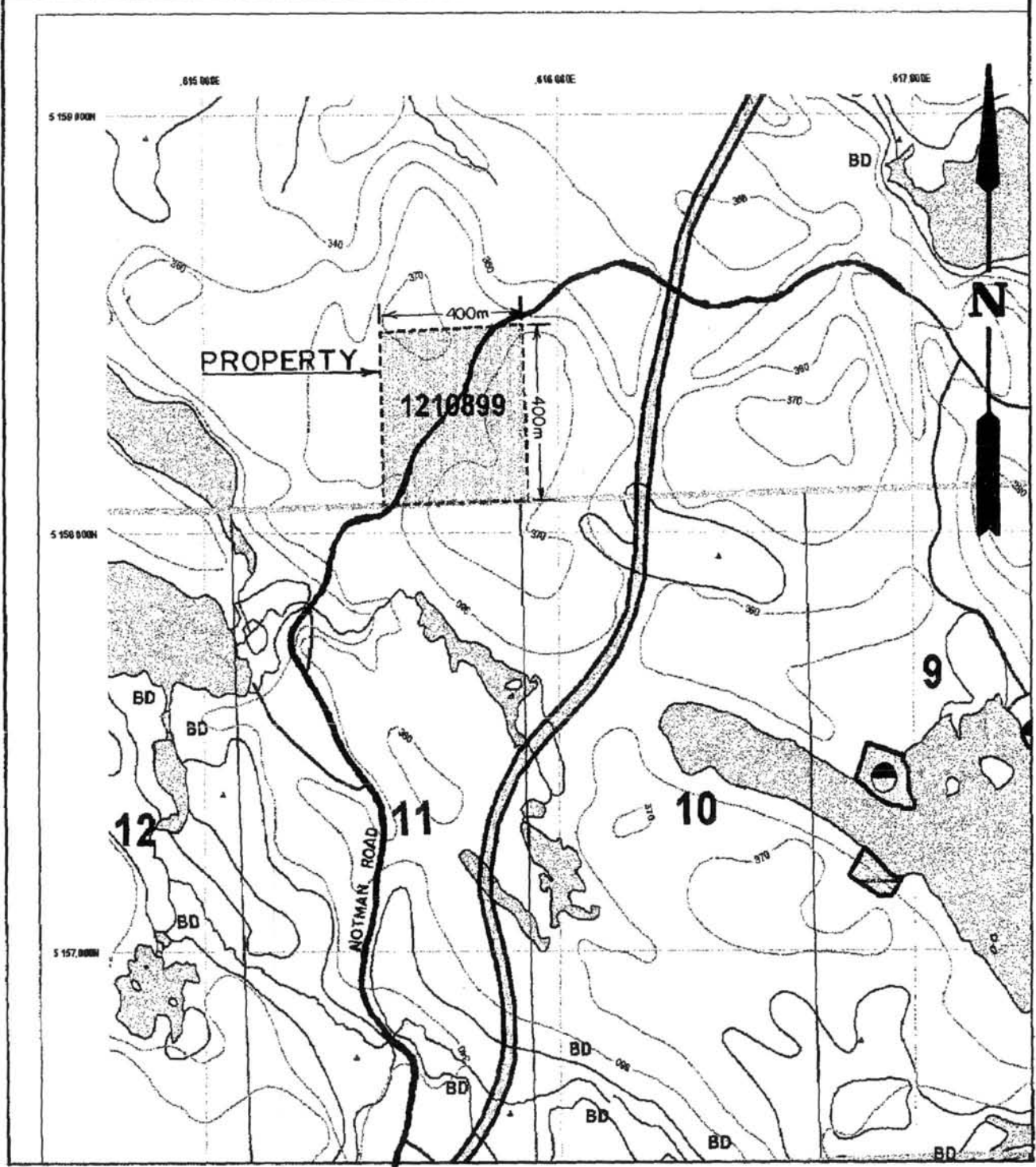


FIG. 1

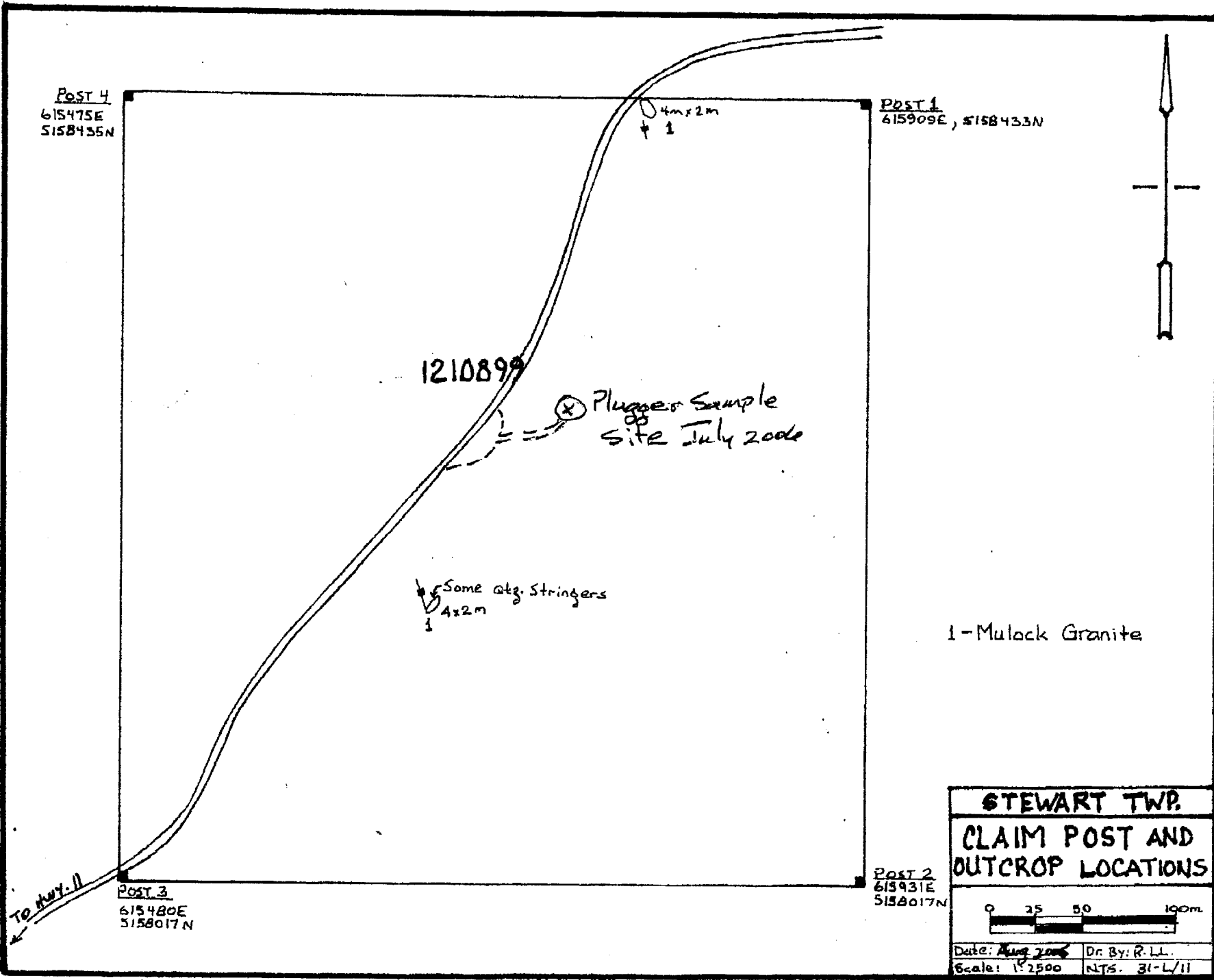


Fig. 2

2. 32832

p. 2

0000000000

INSTRUMENTAL APPROVAL BY REGISTRY

## **GENERAL GEOLOGY**

The property is located within the Mulock Granite, an 'A' – Type granite which intruded into the contact area of the Tomiko Terrain to the East, against the Tilden Lake Terrain to the West and the Red Cedar Lake Gneiss to the North. The granite has been age dated at 1.244 billion years.

## **PREVIOUS WORK**

The property was previously part of a larger property that had line-cutting and mapping performed on it in 1992. In 1993 five large blocks (10 – 15 tons) were removed from some large boulders lying just to the North of the current stripping program. Also in 1993, two small blocks were removed from these same boulders and were used to cut and polish a number of 3" X 6" X ½" slabs for marketing purposes.

In 1997 a manual stripping program was carried out exposing more of the massive granite suitable for extracting large blocks.

In 2001 a program of outcrop stripping and mapping was conducted by Ray Lashbrook.

In 2005 a work program consisting of ½ day of manual stripping and mapping of newly exposed outcrops and ½ day of re-blazing the claim boundary was undertaken.

## **PROPERTY GEOLOGY**

The Mulock Granite consists of sub-rounded crystals of pinkish feldspar up to 2 cm long dispersed within a moderately foliated, fine grained, grey to pinkish matrix of quartz, feldspar and biotite, Hornblende and magnetite crystals and masses occur sporadically throughout the rock. Magnetite mega-crysts have been noted up to 2.5 cm in diameter elsewhere on the property.

The granite in all outcrops were found to be fairly uniform in composition and texture over the areas of stripping.

## **2006 PROGRAM**

The one day program consisted of the drilling of several holes of ~ 1 foot depth with a gas plugger. The block was then removed by the use of metal wedges being inserted into the holes and hit with a hammer. A block of ~ 8" X 10" X 12" in size was removed. This block weighed ~ 73 pounds.

## **CONCLUSION**

The one day program resulted in the removal of a block of ~ 73 pounds to cut and polish samples for marketing purposes. Samples that were cut and polished by previous owners demonstrated that the stone takes a good polish.

## **RECOMMENDATIONS**

It is recommended that further stripping of the outcrops take place and that a larger multi-tonne sample be removed for testing and marketing purposes.

## **PROCESSING OF ROCK SAMPLE**

The sample was taken to Khouri Granite in Sudbury where 10 slabs were cut and one was polished.

## **RESULTS**

The gneissic granite is a very hard and competent rock and takes a good polish. On fresh surface it is a pinkish colour but the cut and polished sample is a darker pinkish-grey tone due to the biotite and feldspars and small reddish spots due to disseminated hematite probably caused from some oxidation of the biotite. There are also some small shiny grey-black magnetite crystals. The gneissic quality of the stone is more readily apparent in the cut and polished sample than in the large block.

The stone appears to have the qualities required to lend itself to marketing in the building stone industry as large 4' x 8' slabs or as tiles, table tops, counter tops, etc.

