

**Assessment Report for
Diamond Drilling
in the
Jerome Mine Area,
South Swayze Property,
Osway Township
Porcupine Mining Division,
Ontario, Canada**

**Performed by
Trelawney Augen Acquisition Corp.**

**Mining Claims
S32071, S32074**

NTS: 41 O/9

TABLE OF CONTENTS

1.0 INTRODUCTION

- 1.1 Purpose of the Report
- 1.2 The Trelawney Augen Drill Program – Overview
- 1.3 Augen Gold and Trelawney Augen Acquisition

2.0 ACCESSIBILITY, CLIMATE AND PHYSIOGRAPHY

- 2.1 Accessibility
- 2.2 Climate and Physiography

3.0 PROPERTY DESCRIPTION AND LOCATION

- 3.1 Description and Location

4.0 GEOLOGICAL SETTING

- 4.1 Regional Geology
- 4.2 Geology - Jerome Mine Area
- 4.3 Mineralized Zones - Jerome Mine

5.0 PREVIOUS EXPLORATION WORK BY OTHERS

- 5.1 Overview
- 5.2 History and Previous Work - 1938-1945
- 5.3 History - 1956-1971
- 5.4 History and Previous Work - 1974-1989
- 5.5 History and Previous Work - 1998-2006

6.0 PREVIOUS EXPLORATION WORK - TRELAWNEY AUGEN

- 6.1 Airborne Survey
- 6.2 Drilling Program (2008)
- 6.3 Drilling Program (2010)

7.0 TRELAWNEY AUGEN DIAMOND DRILL PROGRAM

- 7.1 Basis for Drill Program
- 7.2 Description of Drill Area
- 7.3 Historical Jerome Mine Levels and 2010 Drill Holes
- 7.4 Location of Drill Holes
- 7.5 Drill Hole Information
- 7.6 Technical Aspects of the Drill Program
- 7.7 Trelawney Augen Exploration Personnel
- 7.8 Conversion of Historical Units of Measurement
- 7.9 Nomenclature for Rock Types
- 7.10 Overview of Appendices

8.0 LITHOLOGY, STRUCTURE, ALTERATION, MINERALIZATION

- 8.1 Overview of Lithology
- 8.2 Overview of Structure
- 8.3 Overview of Alteration
- 8.4 Description of the Main And South Zones

- 8.5 Overview of Sulphide Occurrence
- 8.6 Overview of Gold Mineralization
- 8.7 Gold Mineralization In\Near The Main Zone
- 8.8 Gold Mineralization in Other Locals
- 8.9 Composite Gold Intersections
- 8.10 Overview of Molybdenum Mineralization
- 8.11 Overview of Silver Mineralization
- 8.12 Overview of Copper Mineralization

9.0 DRILL HOLES TARGETING THE MAIN ZONE ABOVE THE 200 FT. LEVEL

- 9.1 Overview
- 9.2 Overview of Gold Mineralization
- 9.3 Drill hole AG10-46
- 9.4 Drill hole AG10-47
- 9.5 Drill hole AG10-49
- 9.6 Drill hole AG10-56
- 9.7 Drill hole AG10-57
- 9.8 Drill hole AG10-65
- 9.9 Drill hole AG10-66

10.0 DRILL HOLES TARGETING THE MAIN ZONE BETWEEN THE 200 FT. AND 350 FT. LEVELS

- 10.1 Overview
- 10.2 Overview of Gold Mineralization
- 10.3 Drill hole AG10-39
- 10.4 Drill hole AG10-42
- 10.5 Drill hole AG10-43
- 10.6 Drill hole AG10-44B
- 10.7 Drill hole AG10-48
- 10.8 Drill hole AG10-51
- 10.9 Drill hole AG10-52
- 10.10 Drill hole AG10-53
- 10.11 Drill hole AG10-64

11.0 ABANDONED DRILL HOLES TARGETING THE MAIN ZONE BETWEEN THE 200 FT. AND 350 FT. LEVELS

- 11.1 Overview
- 11.2 Overview of Gold Mineralization
- 11.3 Drill holes AG10-40A, B, C
- 11.4 Drill holes AG10-41A,B
- 11.5 Drill hole AG10-44A
- 11.6 Drill hole AG10-55

12.0 DRILL HOLES TARGETING THE MAIN ZONE BETWEEN THE 350 FT. AND 500 FT. LEVELS

- 12.1 Overview
- 12.2 Strike of the Main Zone
- 12.3 Overview of Gold Mineralization
- 12.4 Drill hole AG10-50
- 12.5 Drill hole AG10-54
- 12.6 Drill hole AG10-58

- 12.7 Drill hole AG10-60
- 12.8 Drill hole AG10-61
- 12.9 Drill hole AG10-62
- 12.10 Drill hole AG10-63

13.0 DRILL HOLES TARGETING OTHER LOCATIONS

- 13.1 Overview
- 13.2 Overview of Gold Mineralization
- 13.3 Drill hole AG10-59
- 13.4 Drill hole AG10-45

14.0 OVERVIEW OF SAMPLING

- 14.1 Sampling Procedures
- 14.2 Quality Control of Sampling

15.0 CONCLUSIONS AND RECOMMENDATIONS

- 15.1 Conclusions
- 15.2 Recommendations

REFERENCES

STATEMENT OF QUALIFICATIONS

LIST OF FIGURES

- Figure 1: South Swayze Property Location Map
- Figure 2: Claim Map for Southern Swayze Greenstone Belt
- Figure 3: Claim Map for Jerome Mine Area with 2010 Trelawney Augen Drill Holes
- Figure 4: Regional Geology Map (After Ayer & Trowell, 2005)
- Figure 5: Location of the Main and South Zones of the Jerome Mine
- Figure 6: Fugro Airborne Surveys Residual Magnetic Field Jerome Mine Area
- Figure 7: Location of Historical Drill Holes Used to Position Trelawney Augen Drill Holes
- Figure 8: Drill Holes Targeting Above the 200 ft. Level with Significant Intersections
- Figure 9: Drill Holes Targeting Between the 200 ft. and 350 ft. Levels with Significant Intersections
- Figure 10: Drill Holes Targeting Between the 350 ft. and 500 ft. Levels with Significant Intersections
- Figure 11: Drill Hole Targeting Between the 500 ft. and 650 ft. Levels with Significant Intersections
- Figure 12: Significant Intersections Well Outside the Main Zone
- Figure 13: Drill Holes with Best Composite Intersections

LIST OF TABLES

- Table 1: Summary of Information for Claims Worked
- Table 2: Summary of Historic Jerome Mine Resources
- Table 3: Summary of Historic Gold Resources in Chester Township
- Table 4: Auriferous Zones at the Jerome Mine
- Table 5: Drill Holes Used To Position Trelawney Augen Drill Holes
- Table 6: Drill Hole Information
- Table 7: Nomenclature for Rock Types
- Table 8: Relationship between Sediment and the Main Zone
- Table 9: Best Gold Intersections - In\Near the Main Zone
- Table 10: Significant Gold Intersections - Well Outside of the Main Zone
- Table 11: Composites over 1.00 g/t Au
- Table 12: Best Molybdenum Intersections in Drill Holes
- Table 13: Best Silver Intersections in Drill Holes
- Table 14: Best Copper Intersections in Drill Holes
- Table 15: Gold Composites above the 200 ft. Level
- Table 16: Gold Composites between the 200 ft. and 350 ft. Levels
- Table 17: Gold Composites between the 350 ft. and 500 ft. Levels
- Table 18: Best Gold Intersections (South Zones)
- Table 19: Summary of Number of Samples, Standards and Duplicates

LIST OF APPENDICES

- APPENDIX A: List of Claims
- APPENDIX B: Muscocho Longitudinal Section
- APPENDIX C: Logs for Drill Holes
- APPENDIX D: Certificates of Analysis
- APPENDIX E: Cross-Sections for Drill Holes
- APPENDIX F: Best Drill Hole Intersections for Gold and Silver
- APPENDIX G: Composite Drill Hole Intersections for Gold
- APPENDIX H: Drill Hole Intersections with > 1.00 g/t Au
- APPENDIX I: Tables Related to Quality Control

TABLES IN APPENDIX I

Table A: Summary of Standards for Drill Holes Targeting the Main Zone above the 200 ft. Level

Table B: Summary of Standards for Drill Holes Targeting the Main Zone between the 200 ft. & 350 ft. Levels

Table C: Summary of Standards for Drill Holes Targeting the Main Zone between the 350 ft. & 500 ft. Levels

Table D: Summary of Standards for Drill Holes Targeting Other Locations

Table E: Summary of Duplicates for Drill Holes Targeting the Main Zone above the 200 ft. Level

Table F: Summary of Duplicates for Drill Holes Targeting the Main Zone between the 200 ft. & 350 ft. Levels

Table G: Summary of Duplicates for Drill Holes Targeting the Main Zone between the 350 ft. & 500 ft. Levels

Table H: Summary of Duplicates for Drill Holes Targeting Other Locations

Table I: Summary of Duplicates for Abandoned Drill Holes

Table J: Summary of Blanks for Drill Holes Targeting the Main Zone above the 200 ft. Level

Table K: Summary of Blanks for Drill Holes Targeting the Main Zone between the 200 ft. & 350 ft. Levels

Table L: Summary of Blanks for Drill Holes Targeting the Main Zone between the 350 ft. & 500 ft. Levels

Table M: Summary of Blanks for Drill Holes Targeting Other Locations

1.0 INTRODUCTION

1.1 PURPOSE OF THE REPORT

This report has been prepared to meet requirements for the filing of Assessment Work under the provisions of the Ontario Mining Act. The report describes results of a diamond drill program performed by Trelawney Augen Acquisition Corporation in Osway Township, in the central part of the South Swayze Property, Porcupine Mining District, Ontario.

1.2 TRELAWNEY AUGEN DRILL PROGRAM - OVERVIEW

Thirty-two drill holes totaling 3,840.10 metres tested an area within claims S32071 and S32074 that is referred to in this report as the Jerome Mine Area, as it is located immediately southeast of the Jerome Mine shaft, and includes a part of the underground levels of the Jerome Mine.

The diamond drill program was performed between May 29, 2010 and July 29, 2010 while core logging was completed between June 07, 2010 and July 29, 2010. The author was on-site for the duration of both the drilling and logging.

This program marked the continuation of an extensive drilling campaign by Trelawney Augen that has involved drilling in numerous locals across the South Swayze Property and in adjoining optioned ground. This program started on October 08, 2009 and has been on-going more or less continuously to early April, 2012.

1.3 AUGEN GOLD AND TRELAWNEY AUGEN ACQUISITION

Trelawney Augen Acquisition Corporation was created from Augen Gold Corporation on December 05, 2011 following Augen's take over by Trelawney Mining and Exploration Ltd. on September 15, 2011. In this report, the company is referred to as Trelawney Augen although the work was performed under the name Augen Gold.

2.0 ACCESSIBILITY, CLIMATE AND PHYSIOGRAPHY

2.1 ACCESSIBILITY

The South Swayze Property covers a 45 kilometre long section of ground stretching southeast from west of Opeepeesway Lake to east of Highway #144, midway between Timmins and Sudbury to the southwest of the town of Gogama (Figure 1). The area of drilling lies in the west-central part of this property, at the Jerome Mine.

The Jerome Mine Area is accessible via the Jerome Road, a gravel road that heads northeast from the Sultan Road between kilometer 42 and 43. The Sultan Road begins at Highway 144, at its junction with Highway 560.

2.2 CLIMATE AND PHYSIOGRAPHY

The climate on the South Swayze Property is similar to that of Timmins, to the north for which Environment Canada indicates that the 10-year temperature range is from +38.9°C to -45.6°C. The average annual precipitation in the form of snow and rain is approximately 85 cm and falls evenly throughout the year.

This part of the South Swayze Property is typical of the Ontario northland, with extensive tree cover and limited topographic relief, accompanied by local swamps.

-90°

-80°



Ontario

South Swayze Property

50°

50°

Thunder Bay

Timmins

Kirkland Lake

Sault Ste Marie

Sudbury

Ottawa

Toronto



TRELAWNEY AUGEN ACQUISITION CORP.

TRELAWNEY

Energy and Exploration Inc.

Date: 2/5/2012

Author:
Andrew McLellan

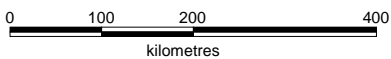
Office:

Drawing:

Scale: 1:8250000

Figure 1
South Swayze Property
Location

Projection: Longitude / Latitude (NAD 83)



-90°

-80°

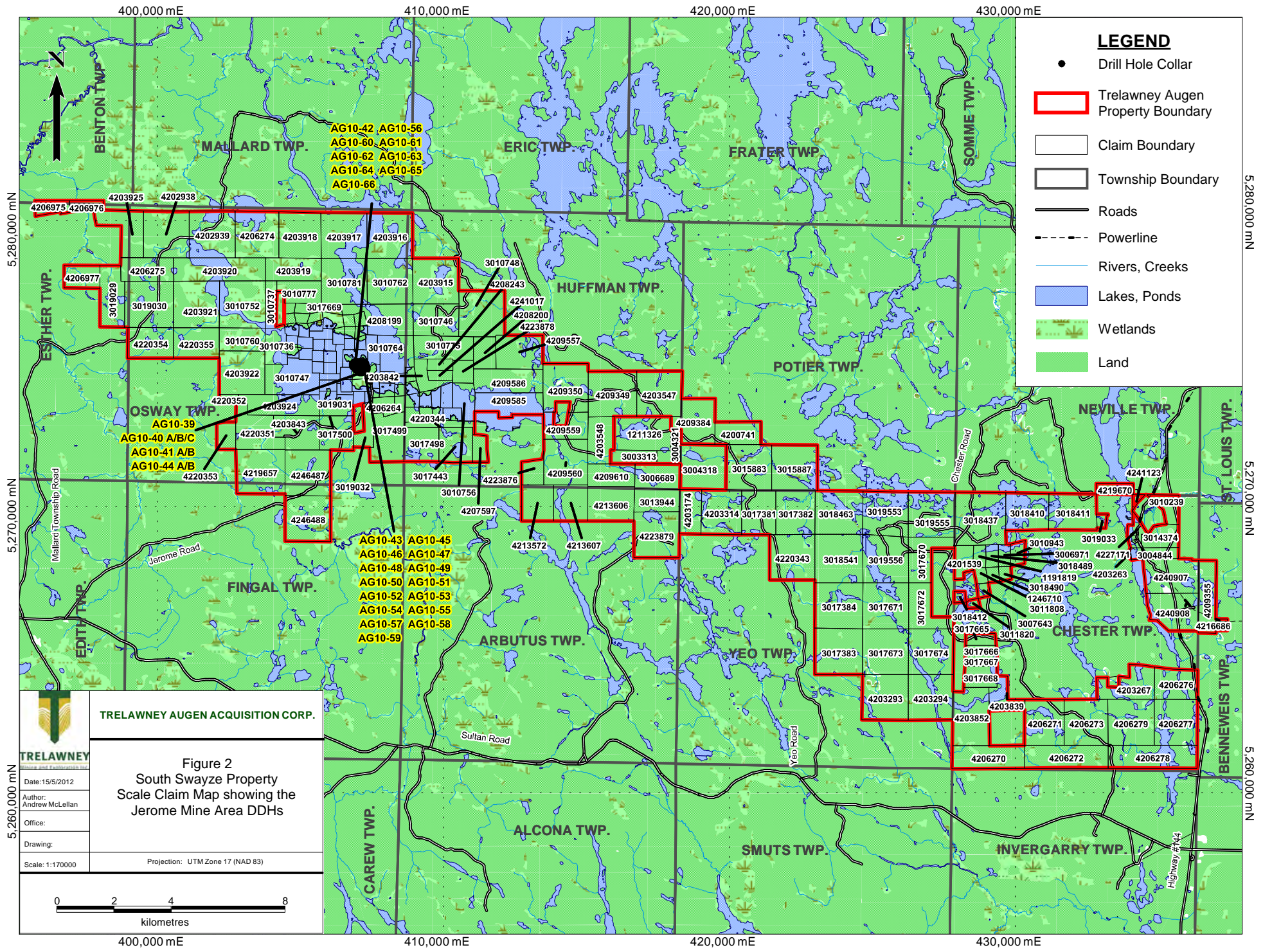
3.0 PROPERTY DESCRIPTION AND LOCATION

3.1 DESCRIPTION AND LOCATION

The South Swayze Property, approximately centered at the UTM of 417131m E 5271826 m N consists of 24,309 hectares of contiguous mining claims over a 45 kilometre length that extend southeast through parts of Esther, Fingal, Osway, Arbutus, Huffman, Potier, Yeo, Chester and Neville Townships (Figure 2). A list of the entire claim group plus one for the patent claims and MLOs are given in Appendix A. Table 1 below summarizes information for the claims involved in the drilling and Figure 3 positions the drill holes within these claims.

Table 1: Summary of Information for Claims Worked

Claim or Disposition Number	Hectares	Owner	Claim Due Date	Township
S32071	11.873	100% Trelawney Auger Acquisition Corp.	Patent	Osway
S32074	21.384	100% Trelawney Auger Acquisition Corp.	Patent	Osway



LEGEND

- Drill Hole Collar
- ▭ Trelawney Augen Property Boundary
- ▭ Claim Boundary
- ▭ Township Boundary
- Roads
- - - Powerline
- Rivers, Creeks
- ▭ Lakes, Ponds
- ▭ Wetlands
- ▭ Land

AG10-42 AG10-56
 AG10-60 AG10-61
 AG10-62 AG10-63
 AG10-64 AG10-65
 AG10-66

AG10-39
 AG10-40 A/B/C
 AG10-41 A/B
 AG10-44 A/B

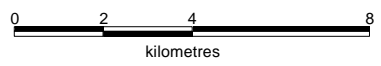
AG10-43 AG10-45
 AG10-46 AG10-47
 AG10-48 AG10-49
 AG10-50 AG10-51
 AG10-52 AG10-53
 AG10-54 AG10-55
 AG10-57 AG10-58
 AG10-59

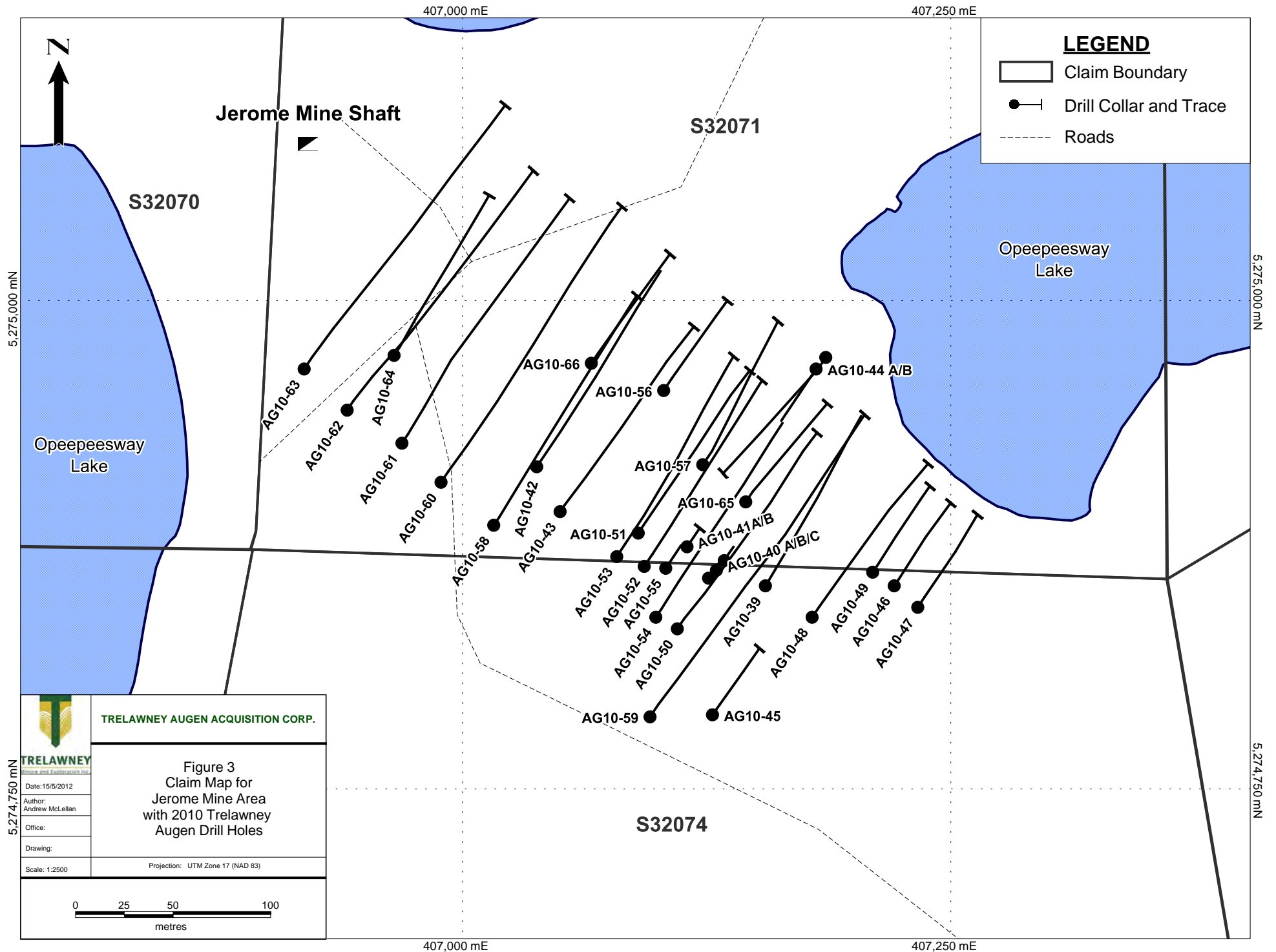
TRELAWNEY AUGEN ACQUISITION CORP.

Figure 2
 South Swayze Property
 Scale Claim Map showing the
 Jerome Mine Area DDHs

TRELAWNEY
 Mining and Exploration Inc.
 Date: 15/5/2012
 Author:
 Andrew McLellan
 Office:
 Drawing:
 Scale: 1:170000

Projection: UTM Zone 17 (NAD 83)





4.0 GEOLOGICAL SETTING

4.1 REGIONAL GEOLOGY

The South Swayze Property lies within the southern Swayze Greenstone Belt - a northwest to west-trending belt of metamorphosed Archean volcanic, sedimentary and intrusive rock that is bounded by granitoid batholiths (Figure 4) (Ayer & Trowell, 2002). This belt is considered to be a western continuation of the richly mineral-endowed Abitibi Greenstone Belt.

A prominent sedimentary band that is up to several kilometres wide and that has been assigned to the late Archean Timiskaming Series strikes for over twenty-six kilometres southeast across this belt. This band is similar in age and composition to a unique band of Timiskaming sedimentary rock in the Kirkland Lake gold camp 230 kilometres to the northeast, has been intruded by intermediate feldspar porphyry and is host to a considerable amount of the most prominent gold mineralization in the area, including the Jerome Mine.

The volcanic rock that engulfs the Timiskaming band is assigned to the older Keewatin series, and in this part of the Swayze Greenstone Belt, is mainly mafic and intermediate in composition. Subordinate relatively narrow intercalated sedimentary bands within this volcanic rock are comprised of wacke, siltstone, argillite and iron formation.

Intrusive bodies of tonalite, gabbro, quartz-feldspar porphyry, lamprophyre and diabase are also present.

Shearing is common throughout the southern Swayze, with foliation, shear planes, and primary layering mainly sub-vertical. Several of the deformation zones that are present are thought to be extensions of zones in the Kirkland Lake camp; and these cut Timiskaming rock, younger intrusive feldspar porphyry and older Keewatin volcanic and sedimentary rock in the area.

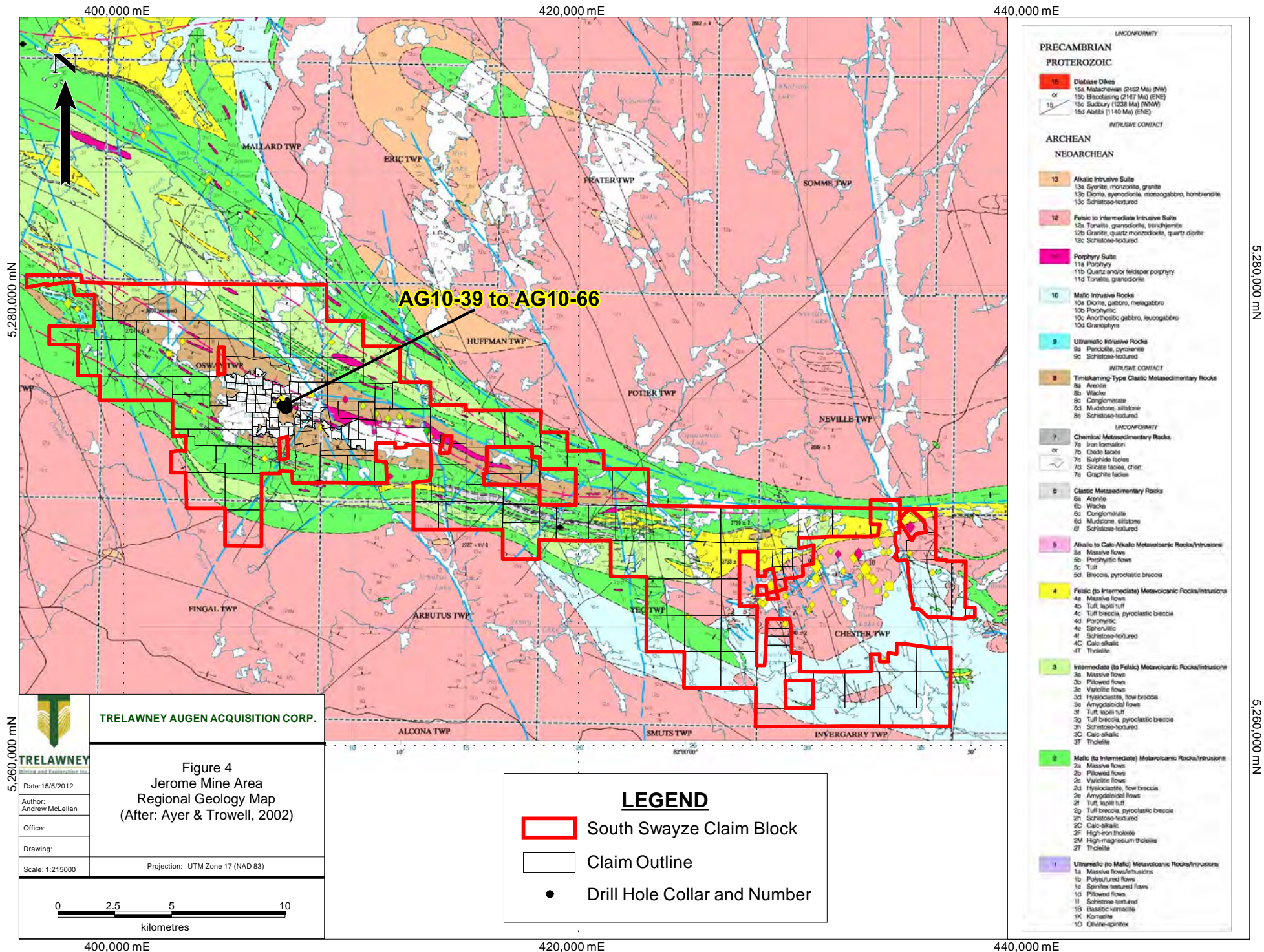
Metamorphism within the southern part of the Swayze Greenstone Belt is largely upper greenschist facies.

At the time of drilling, it was known that the Jerome Mine had produced 56,000 ounces of gold and 15,600 ounces of silver between 1939 and 1943, with significant resources remaining (Table 2).

Table 2: Summary of Historic Jerome Mine Resources

Deposit	Tons	Grade (oz/t)	Ounces	Classification
Jerome ¹	577,495	0.20	115,713	Probable + possible

Source: Millard, 1989 (equivalent to Inferred resource under current guidelines);



TRELAWNEY AUGEN ACQUISITION CORP.

Figure 4
Jerome Mine Area
Regional Geology Map
(After: Ayer & Trowell, 2002)

LEGEND

South Swayze Claim Block

Claim Outline

● Drill Hole Collar and Number

PRECAMBRIAN	
PROTEROZOIC	
15	Dabase Dikes
15a	Machowan (2452 Ma) (NW)
15b	Blochising (2167 Ma) (ENE)
15c	Sudbury (1528 Ma) (SWW)
15d	Adirid (1140 Ma) (ENE)
INTRUSIVE CONTACT	
ARCHEAN	
NEOARCHAIC	
13	Alkalic Intrusive Suite
13a	Syenite, monzonite, granite
13b	Diorite, syenodiorite, monzogabbro, hornblende
13c	Schistose-textured
12	Felsic to Intermediate Intrusive Suite
12a	Tonalite, granodiorite, trondhjemite
12b	Granite, quartz monzonite, quartz diorite
12c	Schistose-textured
11	Porphyry Suite
11a	Porphyry
11b	Quartz and/or felsic porphyry
11c	Tonalite, granodiorite
10	Mafic Intrusive Rocks
10a	Diorite, gabbro, megagabbro
10b	Porphyry
10c	Anorthositic gabbro, megagabbro
10d	Granophyre
9	Ultramafic Intrusive Rocks
9a	Peridotite, pyroxenite
9c	Schistose-textured
INTRUSIVE CONTACT	
8	Timiskaming-Type Clastic Metasedimentary Rocks
8a	Arenite
8b	Wacke
8c	Conglomerate
8d	Mudstone, siltstone
8e	Schistose-textured
UNCONFORMITY	
7	Chemical Metasedimentary Rocks
7a	Iron formation
7b	Oxide facies
7c	Sulphide facies
7d	Siliceous facies, chert
7e	Graphite facies
6	Clastic Metasedimentary Rocks
6a	Arenite
6b	Wacke
6c	Conglomerate
6d	Mudstone, siltstone
6f	Schistose-textured
5	Alkalic to Calc-Alkalic Metavolcanic Rocks/Intrusions
5a	Massive flows
5b	Porphyritic flows
5c	Tuff
5d	Breccia, pyroclastic breccia
4	Felsic (to Intermediate) Metavolcanic Rocks/Intrusions
4a	Massive flows
4b	Tuff, lapilli tuff
4c	Tuff breccia, pyroclastic breccia
4d	Porphyritic
4e	Spherulitic
4f	Schistose-textured
4G	Calc-alkalic
4T	Tholeiite
3	Intermediate (to Felsic) Metavolcanic Rocks/Intrusions
3a	Massive flows
3b	Pillow flows
3c	Variolitic flows
3d	Hyaloclastite, flow breccia
3e	Amygdales flow
3f	Tuff, lapilli tuff
3g	Tuff breccia, pyroclastic breccia
3h	Schistose-textured
3C	Calc-alkalic
3T	Tholeiite
2	Mafic (to Intermediate) Metavolcanic Rocks/Intrusions
2a	Massive flows
2b	Pillow flows
2c	Variolitic flows
2d	Hyaloclastite, flow breccia
2e	Amygdales flow
2f	Tuff, lapilli tuff
2g	Tuff breccia, pyroclastic breccia
2h	Schistose-textured
2C	Calc-alkalic
2F	High-iron tholeiite
2M	High-magnesium tholeiite
2T	Tholeiite
1	Ultramafic (to Mafic) Metavolcanic Rocks/Intrusions
1a	Massive flows/Intrusions
1b	Pillow flows
1c	Spinifex-textured flows
1d	Pillow flows
1f	Schistose-textured
1B	Basaltic komatiite
1K	Komatiite
1O	Olivine-spinifex

TRELAWNEY
Augen and Exploration Inc.

Date: 15/5/2012
Author: Andrew McLellan
Office:
Drawing:
Scale: 1:215000
Projection: UTM Zone 17 (NAD 83)

0 2.5 5 10
kilometres

The Jerome Mine Area is located 25 kilometres west-northwest of the Cote Lake Gold Deposit (discovery announced several months before the time of the drilling program) and several historical gold deposits in Chester Township with significant resources (Table 3).

Table 3: Summary of Historic Gold Resources in Chester Township

Deposit	Tons	Grade (oz/t)	Ounces	Classification
Murgold-Chesbar	159,000	0.43	68,400	Measured resource
Young-Shannon	222,000	0.354	77,900	Indicated resource
Jack Rabbit	342,000	0.36	123,000	Indicated resource
Total	723,000	0.37	269,300	
Additional resources				
Murgold-Chesbar	240,000	0.19	41,800	Inferred resource
Young-Shannon	725,000	0.16	116,000	Inferred resource
Jack Rabbit	100,000	0.36	36,000	Inferred resource
Total	1,045,000	0.19	193,800	

Source: McBride, 2002.

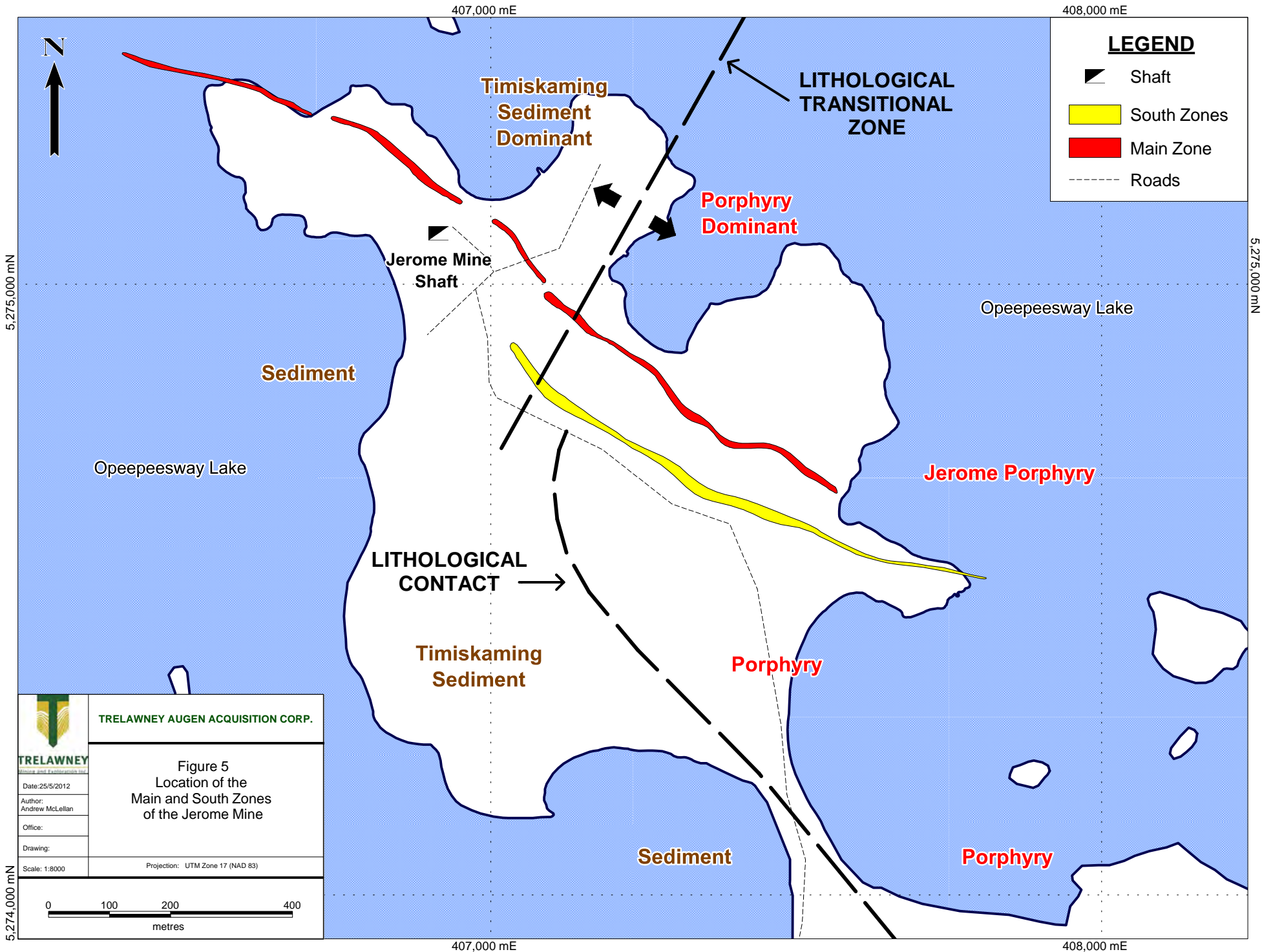
4.2 GEOLOGY - JEROME MINE AREA


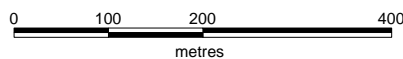
The greater Jerome Mine Area consisting of the peninsula on Opeepesway Lake and the area up to 500 metres east of and west of the peninsula, is underlain by inter-layered wacke, conglomerate, arkose, and intrusive rock (coarse & fine intermediate feldspar porphyry, diorite & mafic intrusive), on a scale of metres to hundreds of metres.

Intrusive rock is most abundant in the eastern half of this area, and appears to decrease dramatically in the west central part of the peninsula just easterly of the mine shaft. The western half of the Jerome Area is characterized by approximately 70% sedimentary rock and 30% intrusive rock.

These rocks have been variably deformed and altered, and are cut by several discrete west to northwest-trending, strongly altered auriferous zones that include the Main and South Zones of the Jerome Mine (Figure 5). These zones dip steeply, mainly to the south, in places are vertical, and locally dip to the north.

Moderately east-dipping, north-northwest trending thrust faults in the Jerome Mine exhibit a predominant vertical movement and a dextral horizontal displacement between one and fifteen metres (Ireland, 1988).



 TRELAWNEY <small>Minerals and Exploration Inc.</small>	TRELAWNEY AUGEN ACQUISITION CORP.
	<p align="center"> Figure 5 Location of the Main and South Zones of the Jerome Mine </p>
<small>Date: 25/5/2012</small>	
<small>Author: Andrew McLellan</small>	
<small>Office:</small>	
<small>Drawing:</small>	
<small>Scale: 1:8000</small>	<small>Projection: UTM Zone 17 (NAD 83)</small>
	

4.3 MINERALIZED ZONES - JEROME MINE

The Main Zone is the most prominent of several auriferous zones at the Jerome Mine (Table 4).

Table 4: Auriferous Zones at the Jerome Mine

Auriferous Zone	Comments
North Main Zone	15 to 23 m north of the Main Zone
Main Zone	
South Main Zone	15 to 23 m north of the Main Zone
South Zone II	75 m south of the Main Zone
South Zone I	120 m south of the Main Zone

Source: Mallard, 1989

5.0 PREVIOUS EXPLORATION WORK BY OTHERS

5.1 OVERVIEW

The following history of the Jerome Mine Property has been taken from Marmont (2008), who based his information in part, from Hill (1980) and Puskas (2004), as reported by Keller (2008).

5.2 HISTORY AND PREVIOUS WORK – 1938-1945

1938 – Bert Jerome, a prospector for Mining Corporation of Canada Ltd., discovered mineralization on the north shore of a peninsula on the south side of Opeepeesway Lake.

1939 – Jerome Gold Mines, Ltd. owned 60% by Mining Corporation and 40% by Hollinger Consolidated Gold Mines, Ltd was incorporated in the early part of the year. A three-compartment shaft was sunk to 520 ft. on claim S-32071 in August and three levels were opened up, at depths of 200, 350, and 500 ft.

1940 – Development continued and production plans were firmed up.

1941 – Hydroelectric power was installed in April, and the 500 short tons per day (tpd) mill began production on August 20th. The shaft was deepened to 835 ft., levels were cut at 650 and 800 ft., a loading pocket was created at 725 ft. and ore and waste passes were developed to the 650-ft level. The production figures for the last five months of the year were 58,824 short tons (tons) milled at 0.182 oz/ton gold grade, producing 8,757 oz gold, and 2,440 oz silver. The average recovery (using a cyanide milling process) was 90.07%. Due to the steep attitude of the ore and the relatively competent ground conditions, shrinkage stoping was used.

1942 – The mill operated at capacity but development fell behind schedule because of wartime labour shortages and was suspended in the latter part of the year. Production for the year totaled 168,628 tons milled at a 0.189 oz/ton gold grade producing 29,480 oz gold and 7,744 oz silver. Recovery was 92.44%.

1943 – The mill was shut down on August 31st because of a wartime labour shortage, although development and exploration work continued. The production summary for the eight months of operation was 107,608 tons milled at a 0.185 oz/ton gold grade, producing 18,641 oz gold and 4,921 oz silver. Recovery was 91.87%.

During the period from September 1943 to June 1945, considerable underground development and surface and underground drilling was carried out, and by the end of 1945 ore reserves were reported to be 344,000 tons averaging 0.19 oz/ton gold. This included a dilution factor of 10%.

1944 – The shaft was completed in February to 1,138 ft. A station was cut at 950 ft., and a level was driven at 1,100 ft. During the final two years, 1944 and 1945, also referred to as the “development” years, the Jerome Mine employed sixty to seventy men, compared to the high of two hundred and eleven during the most recent year of full production (1942).

1945 – Operations at the Jerome Mine were suspended at the end of August, underground machinery was removed, and the mine was allowed to flood. Watchmen remained on the property until 1955.

5.3 HISTORY – 1956-1971

1956 – A fire on October 06th destroyed the head frame and almost all of the surface buildings, plus the original mine records. Following this loss, the property was leased for use as a lumber camp by K.V.P. Company.

1968 – Brown Forest Industries purchased the site from Mining Corporation for use as a camp facility. Brown was subsequently purchased by E. B. Eddy Forest Products, Ltd.

1971 – Camp closed down.

5.4 HISTORY AND PREVIOUS WORK – 1974-1989

1974 – E. B. Eddy undertook a surface diamond drilling program and drilled twenty-one holes, for a total of 8,414 ft. The holes were drilled east of the shaft, in the area of development (during the years 1944 to 1945) between lines 4500E and 11750E and between the 100-ft and 270-ft levels. Drill holes Eddy-1 to Eddy-15 were drilled south at a bearing of S30W. Holes Eddy-16 to Eddy-20 were drilled north at a bearing of N30E. Hole Eddy-21 was also drilled N30E but was collared far to the west, at Monella Point.

1980-81 – Bridgeview Resources Incorporated optioned the property and carried out a program involving diamond drilling, geophysical work, shop construction, headframe and hoistroom rehabilitation, shaft rehabilitation to the 200-ft level, and underground sampling. Surface drilling consisted of eight holes totaling 2,710 ft. to test I. P. anomalies in the mineralized (so-called shear) zone between 78E and 105E at the 100-ft, 200-ft, and 300-ft levels. Four of the five holes “hit significant values” as follows: Hole 80-4 intersected 0.205 oz/ton gold over 10.0 ft. (uncorrected); Hole 80-5 hit 0.15 oz/ton gold over 7.5 ft.; Hole 80-6 intersected gold below the 0.10 oz/ton cutoff; Hole 80-7 hit 0.115 oz/ton gold over 6.5 ft.; and Hole 80-8 intersected 0.468 oz/ton gold (uncut) over 21.5 ft. or 0.286 oz/ton gold over 44.5 ft.

1983 – Osway Explorations, Ltd. made a deal with E.B. Eddy in mid-1983, which gave Osway the right to purchase the property for a cash payment of \$1,250,000 at any time prior to June 1, 1984. Alternatively, Osway was obligated to prepare and deliver to Eddy a feasibility report on the property by February 28, 1985. Osway apparently intended to pump out the mine but instead opted to have an ore reserve study undertaken by Hill-Goettler-De Laporte Ltd. (HGD, 1983). This study reported mineable ore reserves, based on a cutoff grade of 0.10 oz/ton gold over a minimum width of 5 ft, of 583,000 tons averaging 0.203 oz/ton gold (i.e., 118,349 oz) before any allowance for dilution. Derry-Michener-Booth-Wahl considered the HGD figures to represent a geological, in-situ reserve and not a mineable ore reserve, since allowances were not made for unrecoverable ore left in sill pillars, boxhole pillars, and internal stope pillars or unrecoverable ore left in the stope walls.

1984 – Muscocho Explorations, Ltd. carried out its own geophysical surveys, diamond drilling, and ore reserve estimation. A feasibility study by Charpentier and others (January, 1985) made two pertinent conclusions. First it was noted that, “The original mill on the property operated at a

rate of 500 tons per day for the period 1941 through 1943. The suggested present mill production rate is 400 tons per day which translates into 400 tons x 350 days = 140,000 short dry tons of ore per year. This is considered the rate at which the best mining and milling costs can be achieved considering the grade of ore treated. The present ore reserve tonnage of probable and possible ore at 311,000 tons does not justify a production rate of more than 200 tons per day or 75,000 tons per year.”

Second, it was noted that, “recent exploration work in the form of surface diamond drilling has indicated the potential for finding more ore on the property is excellent” and “an exploration program to increase ore reserves must be initiated immediately prior to making a final production decision.”

1987-89 – Muscocho Explorations, Ltd., as reported by Millard (1989), undertook an exploration program in order to maximize ore reserves accessible from the existing workings. The program included surface and underground diamond drilling, hoist installation, headframe and camp construction, dewatering, and shaft rehabilitation to the 500-ft level; exploration drifting on the 500-ft level east to test the South Zone 1-B; mapping and sampling on the 200-ft, 350-ft, and 500-ft levels; and property-wide geophysical surveys. This work clearly identified the existence of seven parallel zones of mineralization. Muscocho estimated that the probable and possible ore reserves accessible from the shaft and its associated workings were 577,495 tons grading 0.20 oz/ton gold (with gold uncut and undiluted), representing 115,499 oz gold.

5.5 HISTORY AND PREVIOUS WORK – 1998-2006

1998 – Domtar Inc. purchased the Jerome Mine and patented claims from E. B. Eddy Forest Products Ltd.

2004 – Domtar Inc. sold the Jerome Mine and patented claims to Boardwalk Creations, Ltd. (a private Canadian corporation) in January. Boardwalk Creations then staked claims in Osway, Huffman, Potier, Arbutus, Mallard, Esther and Benton Townships, forming a claim holding that is 42 kilometres in strike length. Boardwalk then sold these claim holdings to Osprey Gold Corp. (Osprey).

2004 – Osprey completed thirty-three BQ sized diamond drill holes east-southeast of the Jerome Mine Shaft for a total of 18,780 ft. (5,724 m) between June 09th and November 03rd. Many drill holes were designed to undercut the historic drill holes of E.B. Eddy (1974); and several were designed to intersect an untested ore block previously defined.

Osprey extensively sampled for assay in the first third of the program, but a limited number of samples were submitted for analysis thereafter due to financial restrictions enforced by senior management.

2006 – In October, Osprey sold the claims to Coldrock Resources Inc., a private corporation registered in Ontario, and that same month Augen purchased the 63 patented claims (the Jerome Mine property) and 119 staked claims from Coldrock.

6.0 PREVIOUS EXPLORATION WORK – TRELAWNEY AUGEN

6.1 AIRBORNE SURVEY

Fugro Airborne Surveys of Mississauga, Ontario completed an airborne geophysical survey for Trelawney Augen in October-November 2007 (Fugro Airborne Surveys, 2008) that encompassed the company's entire South Swayze Property. Magnetic, EM and radiometric properties were measured.

The survey showed that the southern part of Jerome Mine Area lies within a domain of moderate magnetic susceptibility whereas the northern part lies within a domain of high magnetic susceptibility (Figure 6). A portion of the Main Zone of the Jerome Mine lies close to the contact between these two domains.

6.2 DRILLING PROGRAM (2008)

During the first three months of 2008, Trelawney Augen completed a total of 10,449 metres of drilling in twenty-one drill holes at and near the Jerome Mine site. Thirteen holes tested the depth extent of the Main and South Zones on the peninsula, and eight holes tested the potential strike extent of these zones to the east and west of the peninsula under Opeepeesway Lake.

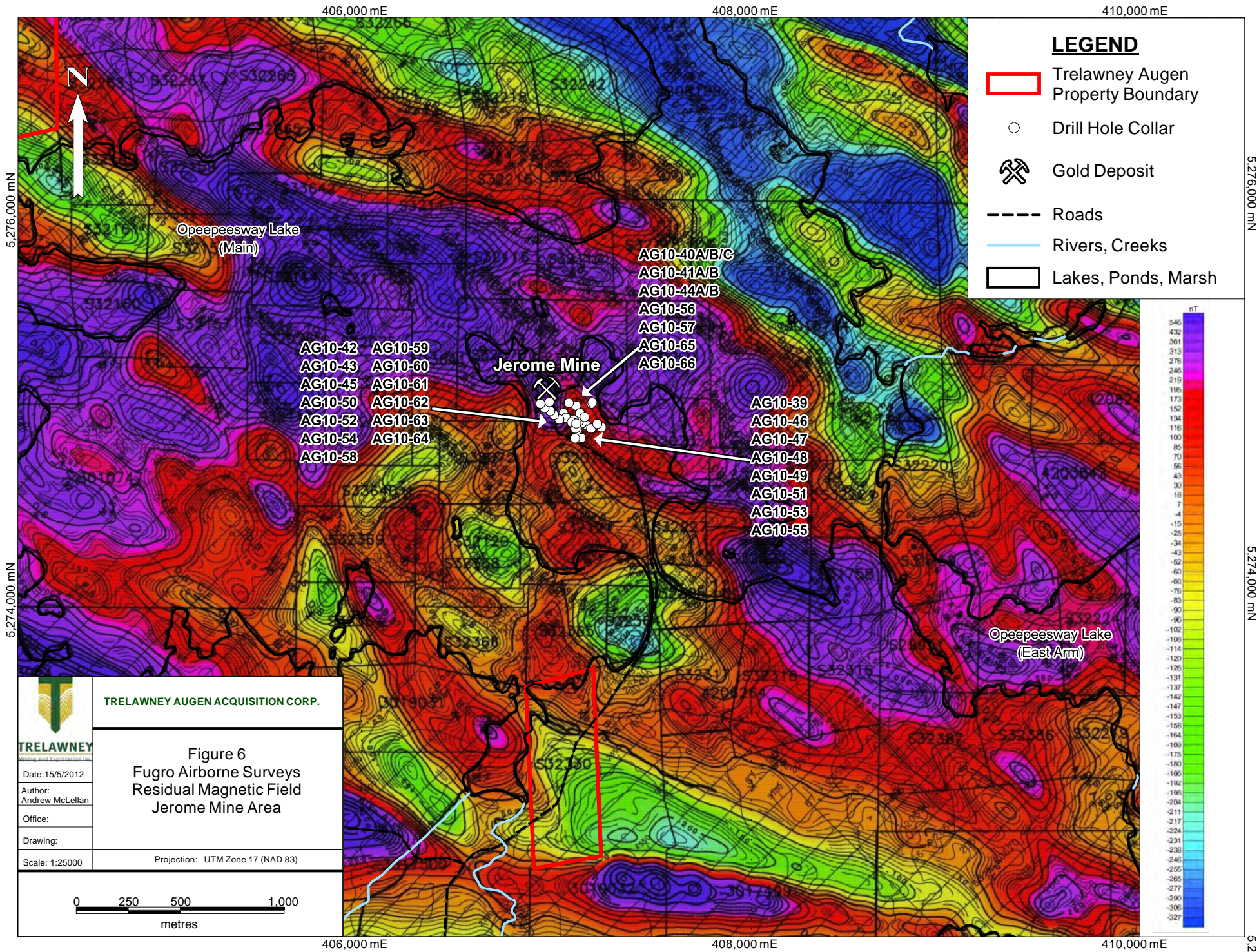
The holes drilled on the peninsula demonstrated continuity of the zones at depth, in terms of veining and strong alteration, but gold values were lower than expected. Continuity of the zones to the east and west of the peninsula was confirmed, but grades and widths were lower than hoped. Overall, the mineralization has been detected over a strike length of 2,500 metres and to more than 600 metres depth and is open at depth.

Highlights from this drill program included 15.13 g/t Au over 8.35 m in drill hole AG08-02 and 71.20 g/t Au over 0.42 m in drill hole AG08-01 (Marmont, 2008).

6.3 DRILLING PROGRAM (2010)

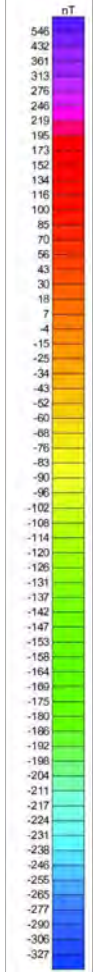
Two drill holes totaling 382.15 metres tested the southern contact area of Timiskaming sediment with a coarse phase of the Jerome Porphyry, at locals approximately 110 metres south and 560 metres southeast of Trelawney Augen drill hole AG10-59, the most southerly of those completed during the 2010 program.

The contact area proved to be very weakly mineralized, with best drill intersections of 1.34 g/t Au over 0.22 m and 1.02 g/t Au over 0.85 m as local occurrences in porphyry (McRoberts, 2012).



LEGEND

- Trelawney Augen Property Boundary
- Drill Hole Collar
- ⚒ Gold Deposit
- Roads
- Rivers, Creeks
- Lakes, Ponds, Marsh



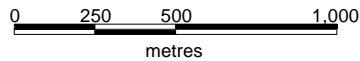
TRELAWNEY AUGEN ACQUISITION CORP.

TRELAWNEY
Mining and Exploration Inc.

Figure 6
Fugro Airborne Surveys
Residual Magnetic Field
Jerome Mine Area

Date: 15/5/2012
Author: Andrew McLellan
Office:
Drawing:
Scale: 1:25000

Projection: UTM Zone 17 (NAD 83)



5,276,000 mN

5,274,000 mN

5,274,000 mN

406,000 mE

408,000 mE

410,000 mE

406,000 mE

408,000 mE

410,000 mE