



**REPORT ON THE REGIONAL BEDROCK SAMPLING FOR 2013**

**CAYENNE PROPERTY**

**MARION AND GENOA TOWNSHIPS**

**PREPARED FOR: RED PINE EXPLORATION**

**By: James Masters**

**Date: November 15th, 2013**

## Table of Contents

1.0 - Summary .....	1
1.1 - Introduction and Terms of Reference.....	1
1.2 - Disclaimer.....	2
2.0 - Property Description and Location .....	3
3.0 - Geology .....	4
3.1 - Regional Geology .....	4
3.2 - Property Geology .....	6
3.3 - Mineralization .....	7
4.0 - Historical Data.....	10
4.1 - Geophysical Analysis of Data from the 2006 Field Program.....	11
5.0 - Current Work on the Cayenne Property.....	12
5.1 - 2013 Red Pine Trenching and Sampling Program (outcrop and channel sampling) .....	12
5.2 - Sampling Results .....	13
6.0 - Discussion .....	16
6.1 - Conclusions and Recommendations.....	17
7.0 - References .....	19
8.0 - Statement of Qualifications.....	20
<i>Appendix A</i> .....	21
<i>Aqua Regia and Whole Rock Analysis Data on Grab and Channel Samples</i> .....	21
<i>Appendix B</i> .....	22
<i>Handheld XRF Results (Raw Data)</i> .....	22



## List of Figures

Figure 1: Property Location Map for Red Pine Exploration in 2013 .....	3
Figure 2 - Cayenne-Chili Claims Map.....	4
Figure 3: Detailed Location Map of Red Pine’s Cayenne Property .....	5
Figure 4: Interpreted geology by H. Butler 2013. ....	9
Figure 5: 2013 Sample Locations .....	12
Figure 6: Summer 2013 sample locations with gridded zinc results. ....	14
Figure 7: Summer 2013 sample locations with gridded copper results.....	14
Figure 8: 2013 Sample Line Traverses for both phases of rock outcrop prospecting ...	15

## **1.0 - Summary**

Red Pine Exploration Inc. (RPX: TSX-V) (or the "Company") is a Canadian exploration company focused on gold and base metal exploration in Northern Ontario, Canada. This report details the bedrock sampling completed on the 100% owned Red Pine Exploration Inc. Cayenne Property as per Permit # PR-13-10276. The program was completed in two phases during the period from June 10<sup>th</sup> to July 3<sup>rd</sup>, 2013 and Sept. 2<sup>nd</sup> to Sept. 22<sup>nd</sup>, 2013.

## **1.1 - Introduction and Terms of Reference**

The purpose of this report is to provide a written record of the research and work done on the Cayenne property for Red Pine Exploration in 2013 for the Ontario ministry in an orderly and concise manner. The authors and other persons involved with Red Pine Exploration (directly or indirectly through consulting companies) mentioned in this report are regularly involved or working up on the Cayenne property during the course of all exploration and drilling activities done in 2013. Decisions were made by qualified persons who had direct in-depth knowledge and involvement with the project. This report was written at the request of Quentin Yarie, President and COO for Red Pine Exploration Inc., with corporate offices at:

Red Pine Exploration Inc.  
141 Adelaide Street West, Suite 520  
Toronto, Ontario  
M5H 3L5

Along with the qualified persons, a number of consultants have been contracted to monitor progress made on the Cayenne property and advise on the property geology and geophysics.

## 1.2 - Disclaimer

The authors have referred to previous documents and papers written by persons whose qualifications are unknown and consequently, the responsibility for the content and interpretation of those reports cannot be accepted.

The authors have examined reports from the records at the Ontario Ministry of Northern Development and Mines (MNDM) and their website contains the following disclaimer:

*“This Site and its Content are offered by the Province of Ontario’s Ministry of Northern Development and Mines (MNDM) as a public service, on an “as-is” and “as-available” basis. The Content may change without notice. You are solely responsible for your use of the Site and the Content. You should not rely on the Content for legal advice nor as authoritative in your particular circumstances. Users should verify the accuracy and applicability of any Content before acting on it. The official version of legislation (statutes, regulations, etc.) prevails over any summary or other reference that may be made to the same legislation on this Site. MNDM does not guarantee, or make any warranty express or implied, that (i) the Content is current, accurate, complete or reliable; or (ii) the Site will be available without interruption, error or omission, that errors will be corrected or that the Site, the servers, the products, etc. are free from viruses or other harmful components. MNDM is not responsible for any damage, however caused, which results directly or indirectly from your use of this Site or the Content. MNDM assumes no legal liability or responsibility for this Site or the Content whatsoever.”*

To the knowledge of the authors, there are no outstanding liens or legal actions pending against the Cayenne property.

## 2.0 - Property Description and Location

The Cayenne property is located in the Porcupine Mining Division approximately 94 km southwest of Timmins, Ontario in a straight line and lies within part of the Swayze Greenstone Belt. Figures 1 and 2 show detailed maps of the location of the claims on Red Pine's Cayenne properties. The property consists of 20 contiguous mineral claims held under Red Pine's name and 1 lease (4 patented claims) currently on title with Glencore Canada Corporation (see figures for Tenure ID numbers). Red Pine has exercised their option to acquire 100% title of the lease however, it is currently under renewal therefore the transfer of title is awaiting the completion of the renewal application.

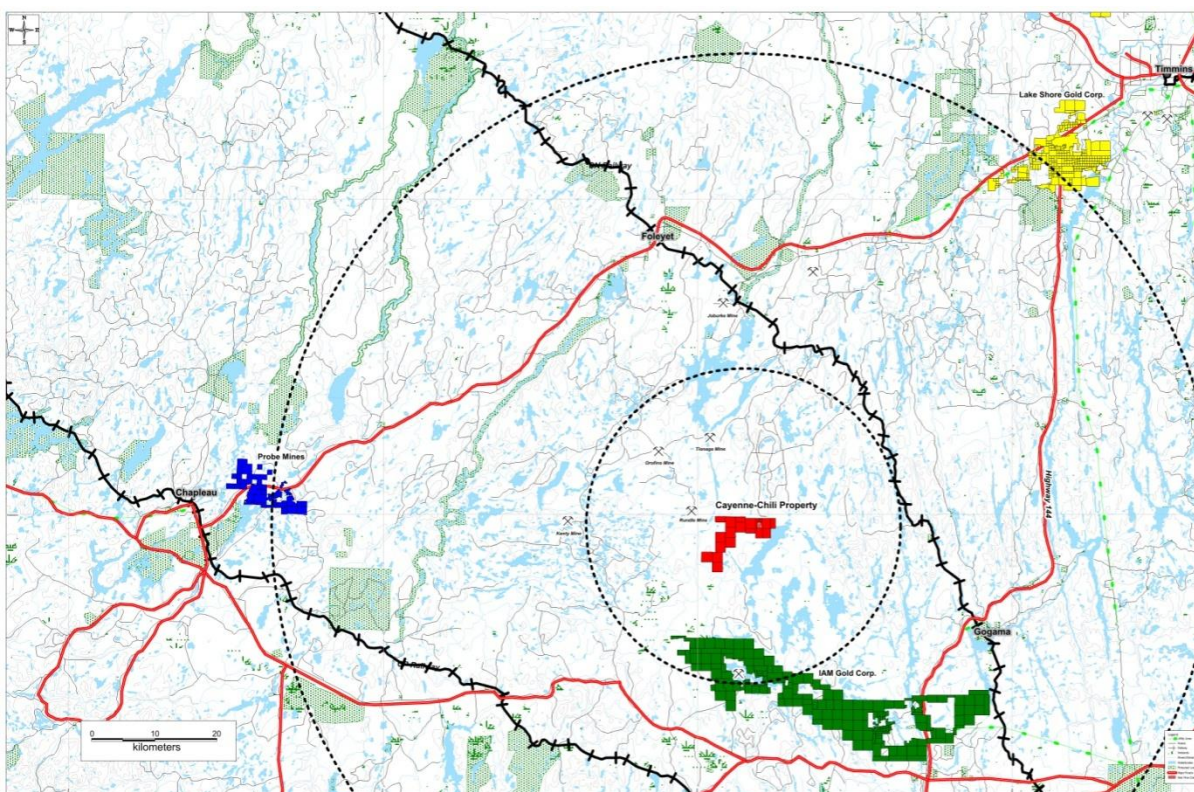


Figure 1: Property Location Map for Red Pine Exploration in 2013, showing Red Pine's Cayenne Property (in red) relative to the other notable properties (gold, blue and green) in the SW Timmins region of northern Ontario. The dotted lines represent a 25km and 75km radius respectively.



greenstone belt (AGB) by the Kenogamissi batholiths, the 2 greenstone belts are considered to be roughly equivalent in age, based on the general similarity of lithological

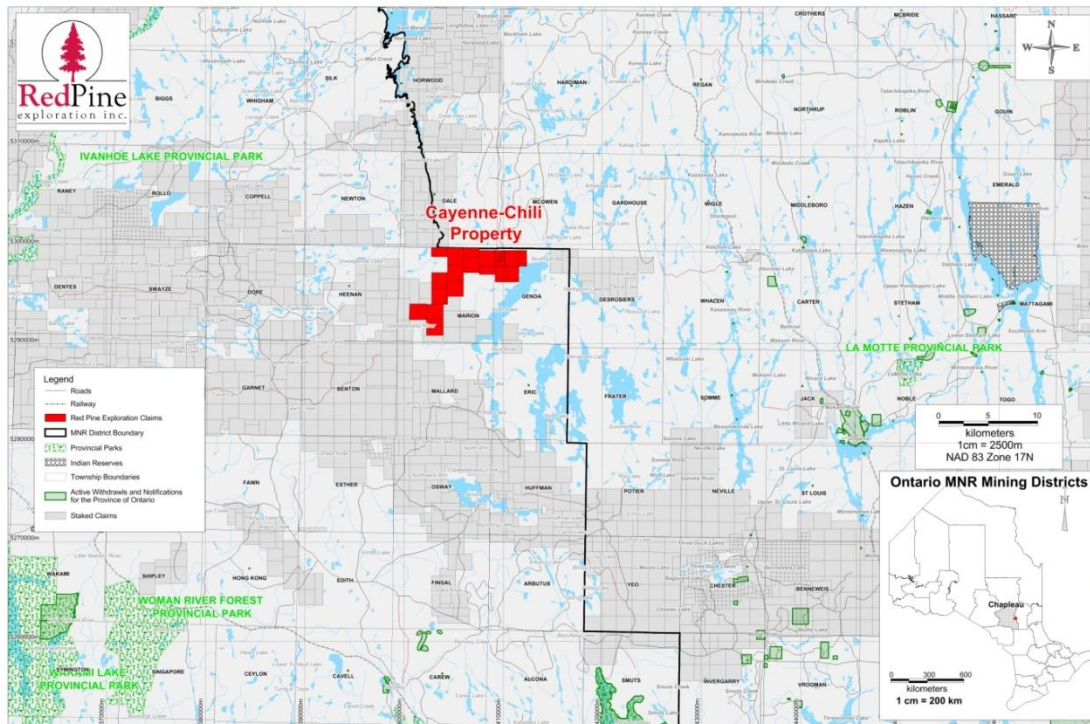


Figure 3: Detailed Location Map of Red Pine's Cayenne Property and surrounding properties in 2013.

assemblage types and the limited U-Pb zircon ages determined to date in the Swayze greenstone belt (Jackson and Fyon, 1991; Heather and Van Breeman 1994).

Some of the older rocks in the area belong to the Chester Group (2730 Ma), a suite of mafic to intermediate volcanic rocks and the overlying Marion Group (2729 Ma) which contain felsic volcanic rocks and iron formation (Gamble, 2004). The Trailbreaker Group (2705 Ma) rests on the Marion Group and is equivalent in time and contains lithologies identical to the Tisdale Assemblage in the Timmins area (Gamble, 2004). In the Swayze area this group of tholeiitic rocks hosts a significant number of gold showings, while the Tisdale hosts the major gold deposits of the Timmins camp. The Swayze Group (2705 Ma) overlies the Trailbreaker Group and it is similar to the upper portion of the Tisdale assemblage. This package of rock contains ultramafic, mafic, intermediate, and felsic volcanic rock which unconformably overlying all of the older groups is the Rideout

Group (< 2690 Ma) that resembles the Timiskaming sediments of the Timmins and Kirkland Lake areas (Gamble, 2004).

With the exception of Proterozoic diabase dikes, all bedrock in the study area is Archean. The oldest rocks appear to be the paragneiss and amphibole gneiss units of the Kapuskasing Structural Zone, located west of the Ivanhoe Lake cataclastic zone (Ayer, 1995). They are part of a sedimentary-volcanic succession that was intruded by the Shawmere anorthosite complex, which predates 2765 Ma (Percival and Krogh 1983). Both the Shawmere anorthosite and the gneissic units are intruded by granitoid gneiss. Rock units and structures generally trend northeast, and dip moderately to the northwest.

East of the Kapuskasing Structural Zone, the rocks of the Swayze greenstone belt and associated intrusions are younger in age, typical of the Abitibi Subprovince (Jackson and Fyon, 1991). Within the supracrustal sequences, the rock units and structural features generally trend easterly with steep dips. Supracrustal rocks have been metamorphosed to greenschist facies, with the exception of areas in close proximity to the granitic intrusions which are of amphibolites facies (Ayer, 1995).

### **3.2 - Property Geology**

Rocks within the Marion and Genoa Townships consist predominantly of mafic volcanic rock sequences within the Swayze Greenstone Belt group of rocks. These mafic volcanic rocks are characterized by massive, pillowed flows, variolitic pillowed flows and synvolcanic sills (of Fe to Mg tholeiitic chemical affinity). Intercalated fine-grained chemical sedimentary rocks (silicate, oxide and sulphide facies iron formation), calc-alkalic felsic volcanic rock and very minor ultramafics rocks are reported in the area. There are also irregular intermediate to felsic intrusive rocks, associated dikes, sills and medium to coarse grained dioritic-granodioritic bodies intrude the supra-crustal sequences. Northwest striking diabase dikes intrude all older lithologies along with faults trending in the same direction (see figure 3 showing the interpreted geology for

the Cayenne claims done through an interpretation of a magnetic survey by Hadyn Butler in 2013).

### **3.3 - Mineralization**

Base Metals - Metals such as lead, zinc and copper are the focus of this project property. The Cayenne property contains significant sulphide mineralization (including sphalerite, galena, chalcopyrite, pyrite and pyrrhotite). Historically the area has had 2 main known areas of metal mineralization, 1) the Jefferson deposit which has significant galena and sphalerite mineralization with lesser chalcopyrite and 2) the Vencan zinc showing which has sphalerite with lesser chalcopyrite and galena.

Generally, the Cayenne properties are related to a folded sequence of mafic to felsic volcanics sandwiching an interpreted Algoma-type iron formation that has silicate (cherty) and oxide facies (magnetite) with occasional sulphide facies mineralization (mainly pyrite and pyrrhotite). The area seems to be a series of complexly folded units in alternating synclines and anticlines with two main occurrences of deformation observed. The sulphide minerals of interest are adjacent to the iron formation and are part of a larger low temperature VMS style mineralization. The sphalerite, galena and chalcopyrite seem to be remobilized along steeply dipping fractures in the rock that occurred post deposition. While more resistant sulphide minerals like pyrite seem to take a different mineral foliation and are more brittle in nature.

Gold - Is a side note to the Cayenne project, but was discovered when the Burton shaft was drilled in 1929, when Hollinger intersected 7.5% Zn, 1.5% Pb and 7.5 g/t Au over 4.8m in a single drill hole. However, mineralization in the Swazye Greenstone Belt occurs in three geological environments:

- 1) Sheared pyritic mafic volcanics that has undergone variable degrees of silicification and sericitization.
- 2) Carbonatized and pyritized quartz–feldspar porphyry hosted in variable sheared mafic volcanic rock.

3) Quartz veins/stringers +/-pyrite hosted within relatively unaltered mafic volcanics.

Quartz veins with or without sulphide mineralization are an important component in all three settings and are invariably associated with higher gold values. In the case of the Cayenne property, gold isn't the focus of the project but will always be looked at since the potential exists in the area for significant mineralization.

Both areas (Jefferson and Vencan) were looked at and a broader scale outcrop sampling and investigation was done over the entire property and especially in the ground surrounding major areas of interest.

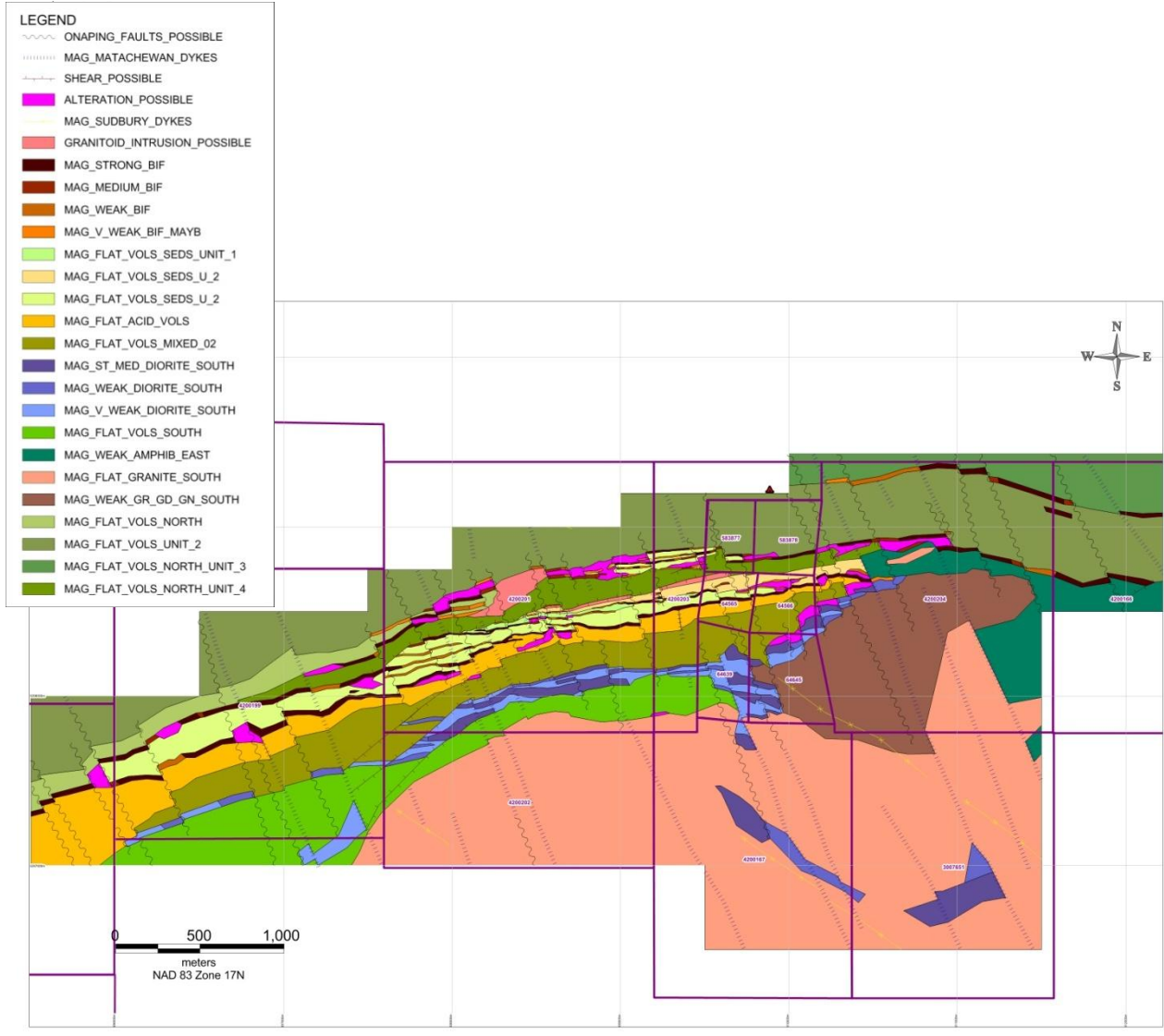


Figure 4: Interpreted geology from a ground magnetic survey for the Cayenne property done by H. Butler in 2013. The legend is blown up below.

## 4.0 - Historical Data

Initial prospecting on the property was done in the early 1900's and eventually led to the discovery of lead-zinc mineralization in 1927. Streaks of sphalerite and galena were first found while drilling the iron formation in Genoa township which led to the non NI 43-101 compliant resource known as the Jefferson Deposit. At a depth of 8 feet a vein of solid galena, assaying 73.44% Pb and 6.01% Zn was discovered. The vein was described and mapped then as being 36 inches wide and exposed over 50 feet. Additional irregular bands of sphalerite, galena and chalcopyrite were also discovered 25 feet North of this point. In 1929, Hollinger intersected 7.5% Zn, 1.5% Pb and 7.5 g/t Au over 4.8m in a single drill hole in the Burton shaft area.

1948, the "Jefferson Deposit" a non NI 43-101 compliant resource estimate of 30,100 tons @ 7.05% Zn and 4.58% Pb. Massive sulphides enriched in Zn and Pb over 150m strike and 30m depth.

In 1950, Central Sudbury Lead-Zinc Mines Limited drilled 23 holes into the Jefferson Deposit and extended the deposit to a depth of 85m. This was followed in 1958 by Stackpool Mining Company Limited, who drilled 50 more holes on the property. This would be the first mention of significant copper mineralization (11 ft core section of 1.55% Cu, 3.30% Zn, 0.44 ounces Au/tonne).

1992, saw Falconbridge take over and complete a Max-Min Survey; followed in 1993 by a drill program on the Jefferson Deposit. Ultimately they concluded that the system is not a "typical" VMS system. The 1990's work by Falconbridge on the mineralization at the Jefferson deposit associated with cross-cutting fractures and was not strictly of the VMS type. One hole encountered 2.7% Zn over 9.12m and 1.6% Zn over 13.83m; another hole had 1.7% Zn over 17.2m.

2006, a Vencan drill program, airborne EM, ground gravity, IP, and ground magnetic survey were conducted over the Jefferson Deposit and extended to the West. Supporting Falconbridge's idea, conclusions were made that the mineralization is stringer-type mineralization so the potential exists to discover a proximal VMS source.

Additional to the existing knowledge on the Jefferson, there was also the discovery in outcrop of a massive sulphide occurrence now named the 'Vencan Zinc Showing' 3.0 kilometers to the west of the Jefferson Zn-Pb deposit. Vencan drilled beneath the showing and intercepted 4.22% Zn over 16.85 meters (including 7.27% Zn over 8.50 meters) on an IP, magnetometer and gravity anomaly that extends 500 meters to the west. Drilling focused on the Jefferson deposit and the Vencan zinc showing (3km apart) and an interpretation for the Jefferson was that it lies on the northern limb of an overturned E-NE plunging isoclinal fold with vergence to the north and that the VMS source is deeper to the north and/or east. 2006 DDH highlights, include: 4.22% Zn over 16.75m (including 7.27% over 8.5m) with 3-14g/t Ag per sample and 2.34% Zn and 2.1% Pb over 8.7m with 9-23g/t Ag per sample.

#### **4.1 - Geophysical Analysis of Data from the 2006 Field Program**

Renewed interest in the Cayenne property came about when previously unused data from the 2006 program re-assessed. Red Pine's resident geophysicist, president and COO Quentin Yarie went over the data and modeled numerous EM plates; those plates were projected to surface in mapping programs and produced coloured coded zones (red, blue, yellow, green, pink, orange and purple) which were used to identify the various areas that had different EM properties and geographical locations (figure 4). Most of the EM plates that were modeled showed properties of dipping EM units to the north. Conversely all drill holes from 2006 and previous years holes were drilled to the north (one hole drilled to the south, which missed all plates in the model) which meant most of the drill holes were parallel to subparallel to the modeled EM plates. Zinc percentages directly correlated with these EM plates in the Jefferson showing which helped give validity to the geophysical modeling. The coloured zones were used for setting up the sampling lines and helped to focus our attention on the areas of high interest in 2013 and will hopefully lead to new discoveries on the property.

## 5.0 - Current Work on the Cayenne Property

### 5.1 - 2013 Red Pine Trenching and Sampling Program (outcrop and channel sampling)

An extensive sampling and trenching program was carried out on the Cayenne property from June 10th to July 3rd, 2013 and Sept. 2nd to Sept. 22nd, 2013 that consisted of numerous sampling lines spaced at 50 to 100 meters apart running roughly in a N-S direction with each sample point spaced at 25m on each line (figure 5 for all sample line traverses). Sampling lines were grouped together closely in the Jefferson and Vencan zinc showings; also sampling in the second phase in September, 2013 had tightly 50m spaced sample lines (50m apart versus 100m). With the use of compass' and Garmin

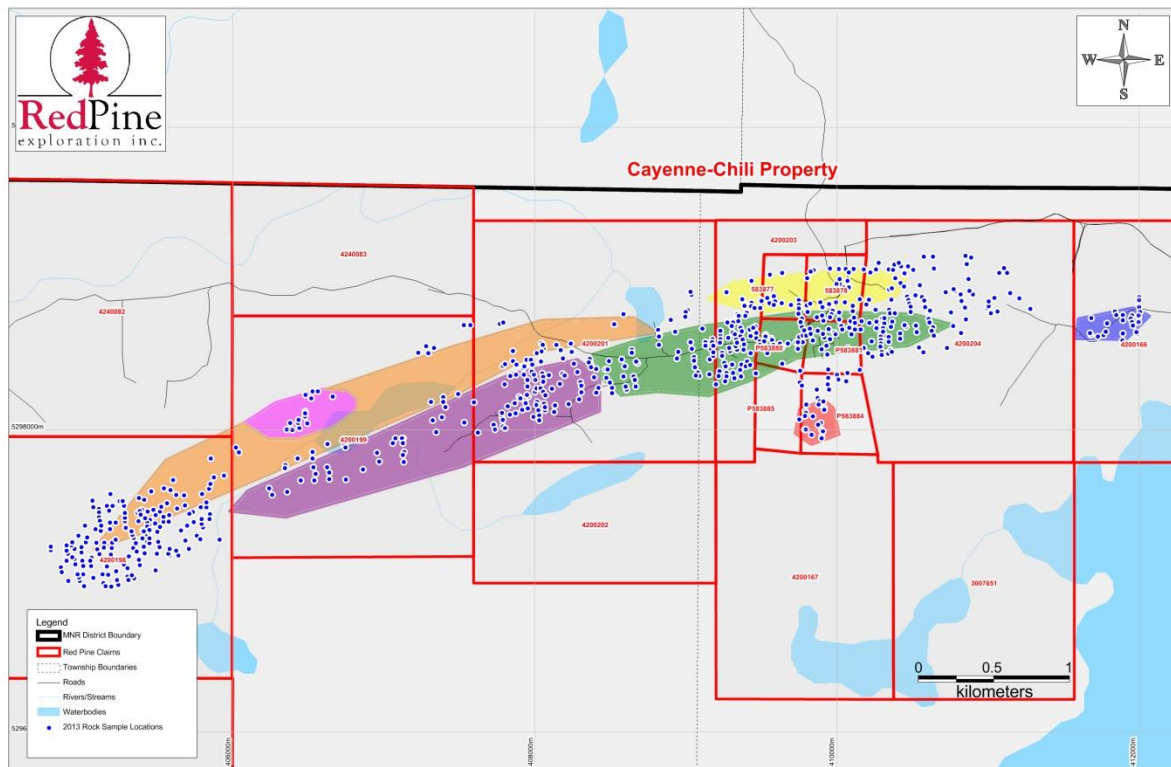


Figure 5: 2013 Rock Sample Locations (blue dots) on the Cayenne Property. The coloured zones represent modeled geophysical plates and grouped in terms of physical properties as an individual colour.

GPS units the samplers made traverses along the lines looking for outcrop and making quick observations and structural measurements when possible. For areas that didn't

have an outcrop readily exposed the site was left alone and the sampler continued onto the next sample location. When an outcrop location was found roughly 0.5-1kg of material was taken and put into a plastic sample bag with sample tag numbers and eventually sent to the lab. Once an outcrop was sampled photos were taken with the GPS at each sample site and a corresponding UTM co-ordinate was automatically attached to the photo for plotting purposes. Figure 5 shows the outcrop sample locations during the program in each of the coloured zones. A total of 729 outcrop samples were collected.

In conjunction with the outcrop sampling a very small backhoe was rented for the purpose of digging small trenches and exposing outcrop in areas of interest and/or where the overburden was thick. The main areas of interest for trenching and possible channel samples were the Jefferson showing (in the green zone), the Vencan Zinc showing (in the purple zone) and the "yellow zone" which is just north of the Jefferson showing. Unfortunately in the yellow zone (and some other minor areas) the overburden was too thick and outcrop could not be exposed properly so the holes were filled back in and sampling moved to another more favourable sample site.

In all 37 channel samples were taken over 3 areas (Vencan - 20 samples over 7 channels, Jefferson - 6 samples over 1 channel and Jefferson east - 11 samples over 1 channel). The channels focused in on massive sulphide mineralization and the adjacent rock units. Results for the channel sampling are presented in Appendix A along with the outcrop samples.

## **5.2 - Sampling Results**

Once all the outcrop and channel samples were taken in phase one in June/July, all of them were sent into Actlabs based in Ancaster, Ontario. Samples underwent an aqua regia testing for base metals and around 30 plus trace elements. From there 37 select samples were pulled based on their locations on the property and were sent in again for whole rock testing. The purpose was to attempt to calibrate the handheld XRF units for

future work and aide in identifying rock type. Figures 6 and 7 outline the significant copper and zinc results encountered by Red Pine Exploration during the 2013 outcrop sampling program. While Figure 8, shows all the sample line traverses taken over the 2 phases. All analyses done at Actlabs are presented in detail in Appendix A.

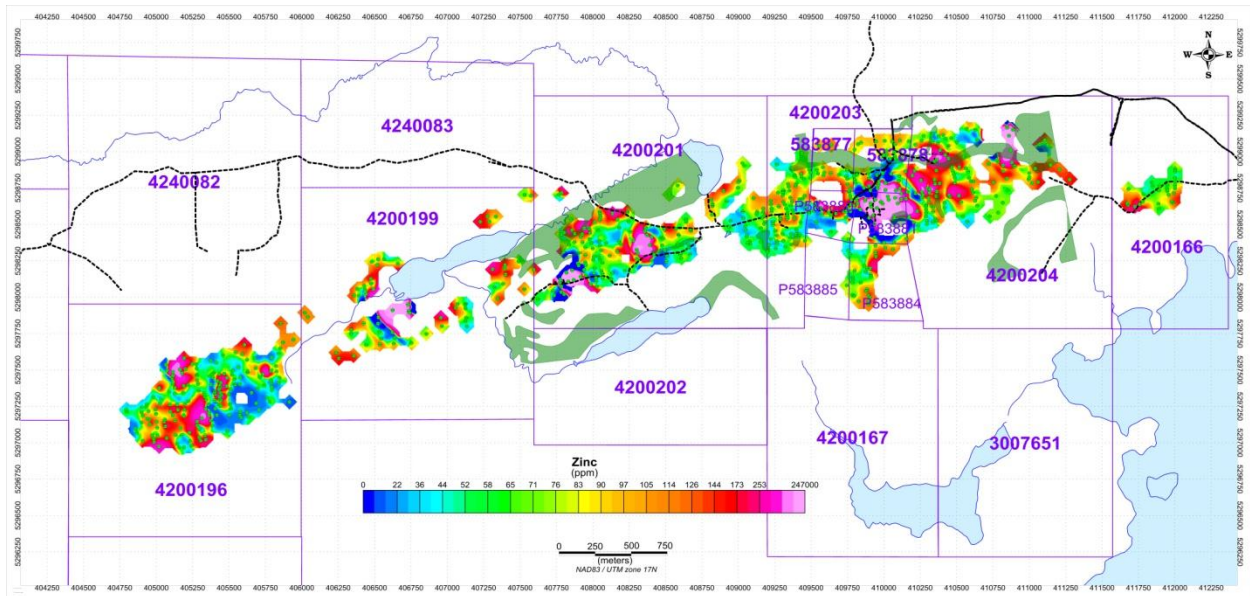


Figure 6: Summer 2013 Outcrop Samples on the Cayenne Property with gridded zinc results.

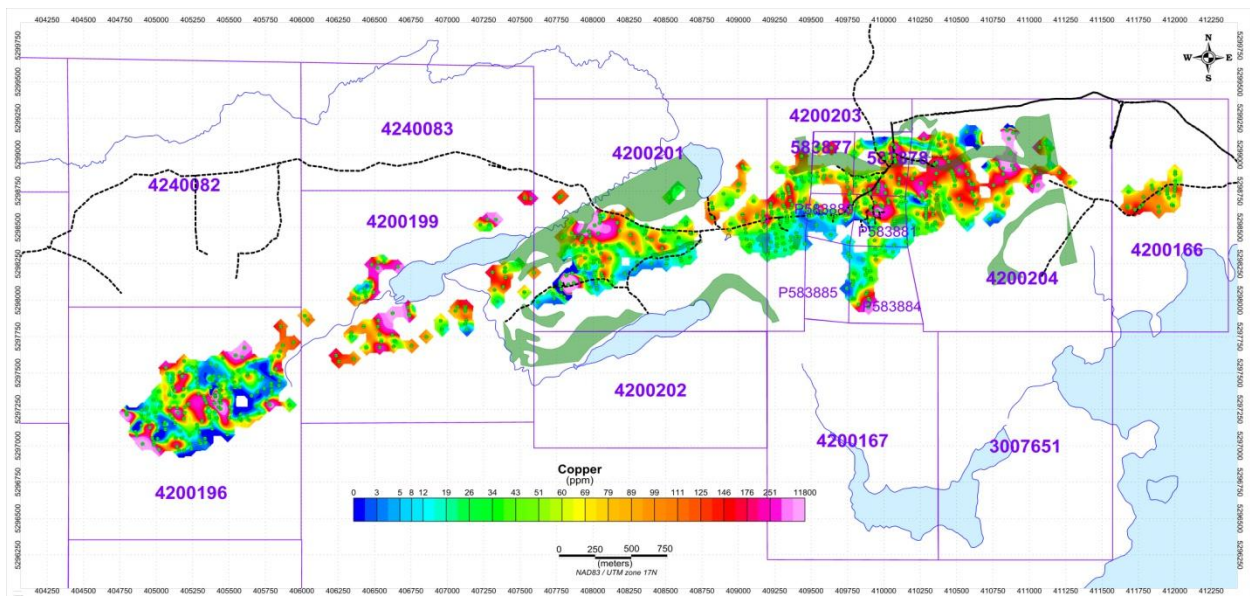


Figure 7: Summer 2013 Outcrop locations Samples on the Cayenne Property with gridded copper results.

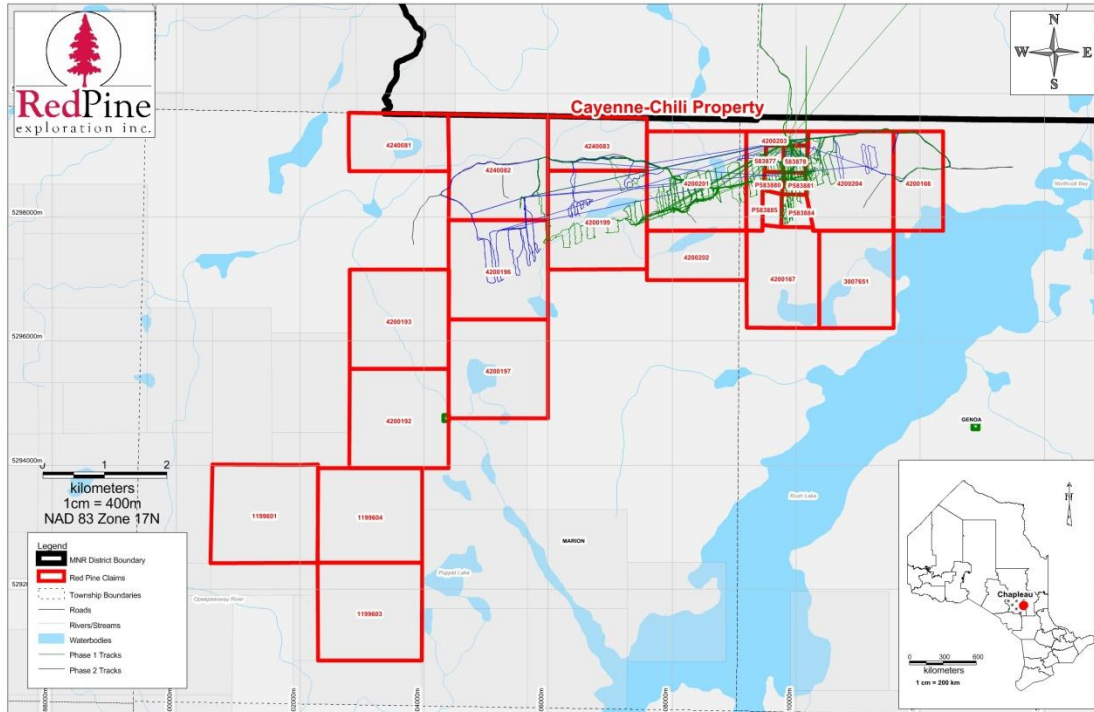


Figure 8: 2013 Sample Line Traverses for both phases of rock outcrop prospecting on the Cayenne Property. The blue lines are for the second phase done in September 2013 and the green lines are from the first phase.

The method used for calibration of the handheld XRF units was relatively simple. Using the 37 samples sent in to the lab for whole rock analysis, we then shot each of those same sample pulps with the handheld units. Once completed discrimination plots were plotted up and the slope and y-intercept calculations were then entered into the calibration of the guns. This would provide us with a quick and easy way to obtain information on the host rock lithology in future sampling programs in an effort to narrow down sample batches and streamline costs.

After the second phase of sampling was completed in early September, all grab samples were brought back from the field and shot with the XRF gun. From there a total of 63 samples of high interest were selected out of the 200+ samples and sent into the lab for whole rock testing and for analysis on base metal contents. Overall, after calibration of the gun, the XRF unit gives us a good indication of what type of rock there is on the property and allows us to collect some crucial data instantly.

## 6.0 - Discussion

The Cayenne property is located approximately 94 km southwest of Timmins, Ontario in a straight line and lies within part of the Swayze Greenstone Belt. The area around Cayenne is classified into 5 sub groups (oldest to youngest): the Chester group, the Marion group, the Trailbreaker group, the Swayze group and the Ridout group. 2 major tectonic events occurred: an earlier one generating N-S trending folds, and a later one generating E-W folding. Locally, there are some high strain zones and they are likely western extensions from the Larder-Cadillac deformation zone and the second zone to the north is likely a western extension from the Porcupine-Destor deformation zone. In 2006 a fold nose was discovered (previously unknown) 500m west of Jefferson deposit. This fold nose area has good potential to host dilatational features and to potentially host favourable mineralization. The area, as a whole, seems to be a series of complexly folded units in alternating synclines and anticlines with two main occurrences of deformation observed.

The geology within the Cayenne property is dominated by bimodal volcanic rocks with associated exhalitive chert and iron formation with intrusive rocks. To the north of the properties there are mafic volcanic rocks, intercalated fine-grained clastic metasedimentary rocks and iron formation, calc-alkalic felsic volcanics are located to the south. The supra-crustal sequence is intruded by intermediate to felsic rocks, associated dykes, sills and medium to coarse grained diorite/granodiorite bodies.

Historically, discovered mineralization on Cayenne is immediately adjacent to the iron formation and through the use of magnetic surveys it can be easily traced. This provides a good foundation for starting points in exploration for new areas of interest, such as between the Jefferson deposit and the Vencan zinc showing and towards the far western end of the Cayenne property. Metals such as lead, zinc and copper are the focus of this project property. The Cayenne property contains significant sulphide mineralization (including sphalerite, galena, chalcopyrite, pyrite and pyrrhotite). Generally, the Cayenne properties are related to a folded sequence of mafic to felsic volcanics sandwiching an interpreted Algoma-type iron formation that has silicate

(cherty) and oxide facies (magnetite) with occasional sulphide facies mineralization (mainly pyrite and pyrrhotite). The sulphide minerals of interest are adjacent to the iron formation and are part of a larger low temperature VMS style mineralization. The sphalerite, galena and chalcopyrite seem to be remobilized along steeply dipping fractures in the rock that occurred post deposition. While more resistant sulphide minerals like pyrite seem to take a different mineral foliation and are more brittle in nature.

Overburden in the area isn't extremely thick and isn't too bothersome for regular sized diamond drilling programs.

## **6.1 - Conclusions and Recommendations**

The results from Actlabs clearly show there is good potential in the area for a polymetallic deposit. New domains have been defined by going over old geophysics data (IP, gravity, magnetics and EM), geochemistry and geology and are aiding us in delineating new prospects to further define good potential targets for future drilling. Numerous methods and interpretations have been used (geochemistry, geological, geophysics, structural and magnetic interpretation) to be put together in an ever expanding data base in an effort to pick these targets for future drilling.

Future use of a small backpack drill might be warranted and could be a very useful tool for cheaper exploration options, and it is recommended for the company by the author. This could lead to quicker timelines and more cost effective discovery. If potential issues like drilling through overburden and torque/power output can be worked out, it is highly recommended by the author, that the drill be used for future use; either just before a larger drill can come in or it could be used in conjunction with the larger diamond drilling to narrow down target areas. Grids for the backpack drill should be placed in areas where there are unknowns about what rock unit lies beneath the overburden and only 1-

2m length samples should be taken from the bedrock to allow for time and cost constraints.

Larger drilling operations should first focus on the two known historically mineralized zones (Jefferson and Vencan) where the updated geophysics/geochemistry has altered opinions on mineralized zone dips and orientations within the host rock. Drilling holes to the south which is in the opposite direction of all but one of the historic holes might prove to get better mineralized intersections.

## 7.0 - References

Ayer, J.A., 1995; Precambrian geology, Northern Swayze Greenstone Belt; Ontario Geological Survey, Report 297, pp. 57.

Gamble, A.P.D., 2004; Summary Report on the Exploration Program for the Period November 01 - December 31 2003 for Greenshield Resources LTD., on the Coppell, Newton, Dale, Frater Townships Property, Porcupine Mining Division, NTS 410.

Heather, K.B., 1993; Regional Geology, Structure and Mineral Deposits of the Achaean Swayze Greenstone Belt, Southern Superior Province, Ontario: Summary Report 1992-1993, Northern Ontario Development Agreements, Minerals, OGS/GSC.

Heather, K.B. and van Breemen, O., 1994; An interim report on geological, structural, and geochronological investigations of granitoid rocks in the vicinity of the Swayze greenstone belt, southern Superior Province, Ontario; *in* Current Research 1994-C; Geological Survey of Canada, p. 259-268.

Jackson, S.L., and Fyon, J.A., 1991; The Western Abitibi subprovince in Ontario, in Thurston, P.C., et al., eds., Geology of Ontario: Ontario Geological Survey Special Volume 4, Part 1, p. 405-482.

Percival, J.A., and Krough, T.E., 1983; U-Pb geochronology of the Kapuskasing structural zone and vicinity in the Chapleau-Foley area, Ontario. Canadian Journal of Earth Sciences, vol. 20, p. 830-843.

## 8.0 - Statement of Qualifications

I, Quentin Dale Yarie, P. Geo. of 196 McAllister Road, Toronto, Ontario, M3H 2N9, do hereby certify that:

- I am a member of the Association of Professional Geoscientists of Ontario since 2010 (License 1778) and a member of the Association of Professional Geoscientists of Nova Scotia since 2002 (License 121). I am also a member of the Society of Exploration Geophysicists (144385).
- I have practiced my profession in excess of 25 years
- I certify that by reason of my education and past relevant work experience, I fulfill with the requirements to be a "Qualified Person" for the purpose of this Assessment Report. My relevant work experience for the purpose of my activities identified in this report are:
  - Experience with junior resource companies as a Director of Energizer Resources (CNDX) and Red Pine Exploration (CNDX). Experience with junior resource companies as Vice President of Exploration of Red Pine Exploration Ltd., Red Pine Exploration Ltd., and Honey Badger Exploration Inc.
  - Continuous work in the mineral exploration and mining industry since 1983. I ran my own geophysical consulting firm from 1990 through 2002. Work has included supervision of grassroots to advanced stage programs which have included airborne and ground geophysics, mapping, geochemical sampling, trenching and drilling. I have reviewed numerous gold, silver, base metals and diamond projects in a wide range of geological environments both in Canada, Mexico, Chile, China, Turkey, Jordan, Italy, and other international destinations.
  - I am the author of several Technical Reports.

Dated at Toronto, Ontario, this \_\_\_\_\_ day of \_\_\_\_\_, 2013

---

Quentin D. Yarie, P. Geo. (ON), P. Geo. (NS)

## *Appendix A*

*Aqua Regia and Whole Rock Analysis Data on Grab and Channel Samples*  
(refer to accompanying certificates provided by Activation Laboratories)

## *Appendix B*

### *Handheld XRF Results (Raw Data)*