

Report on an Overburden Drill Program



Noront Resources Ltd.

Webequie Junction Property

James Bay Lowlands
ABELSON LAKE AREA and FALAN LAKE AREA
Thunder Bay Mining District, Ontario

Revised Submission: August 2013

Webequie Junction Property Overburden Drill Report

Report prepared for:

NORONT RESOURCES LIMITED

Suite 400 – 110 Yonge Street
Toronto, Ontario
M5C 1T4

Report prepared by:

Matt Downey, M.Sc., P.Geo
of

NORONT RESOURCES LIMITED

Suite 400 – 110 Yonge Street
Toronto, Ontario
M5C 1T4

August 2013

70 Pages

Table of Contents

1.	Introduction	4
	1.1 Location and Access	6
	1.2 Claims	7
	1.3 Personnel	7
2.	General Geology	8
3.	Drill Program	12
	3.1 Webequie Junction Project	12
	3.1.1 WJ-MW11-01	13
	3.1.2 WJ-MW11-02	14
	3.1.3 WJ-MW11-03	14
	3.1.4 WJ-MW11-04	15
	3.1.5 WJ-MW11-05	16
4.	Conclusions and Recommendations	16
5.	References	19

Figures and Tables

Figure 1	22
Figure 2	23
Figure 3	24
Figure 4	25
Figure 5	26
Figure 6	27
Figure 7	28
Figure 8	29
Table 1	30

Appendices

Appendix I	31
------------------	----

1. Introduction

From September 13th, 2011 to October 26th, 2011, Noront Resources Ltd. (hereby referred to as ‘Noront’) completed an overburden drilling program on their Webequie Junction property, which covers portions of two claims held by Noront in the townships of ABELSON LAKE AREA (NTS 43/D12) and FALAN LAKE AREA (NTS 43/D13) in the Thunder Bay Mining District.

Between 1959 and 1988, there was sporadic exploration for diamonds by companies such as Consolidated African Selection Trust, De Beers South Africa (1962), and Monopros Limited (the Canadian subsidiary of De Beers), until the discovery of the Attawapiskat diamondiferous kimberlite field by Monopros Limited in 1988. In the early to mid-1990s, joint ventures partners Spider Resources Inc. (‘Spider’) and KWG Resources Inc. (‘KWG’) conducted an airborne magnetic survey throughout the northern part of the James Bay Lowlands focusing on diamond exploration. They discovered the Good Friday and MacFayden kimberlites in the Attawapiskat cluster, as well as the five Kyle series kimberlites, that lie to the east of the property being reported herein.

In 2002, De Beers Canada Inc. entered into a joint venture with Spider and KWG after discovering the McFaulds No. 1 volcanogenic massive sulphide (VMS) deposit while searching for kimberlites in 2001. Subsequent work by Spider and KWG, following another Spider/KWG airborne magnetometer survey, led to the discovery of the McFaulds No. 3 deposit and other related VMS occurrences nearby. The discovery of these deposits, and the recognition of the region as a greenstone belt with great potential for further discoveries of base metal deposits, led to a staking rush by junior mining companies (including Noront) that began in December 2002 and continued well into 2003. The staking rush and subsequent exploration led to the discovery of six additional VMS deposits in 2003 by other junior exploration companies in the region.

Noront has been exploring the general area since early 2003, shortly after the VMS mineralization was discovered near McFaulds Lake by De Beers Canada. Noront acquired their initial claims by staking in August 2003 and followed that up with additional claim staking in January 2006, in the fall of 2007, and in the spring of 2008. Geophysical surveys (VTEM and ground magnetometer) conducted between 2004 and 2006 identified magnetic targets that were drilled in 2006 by Probe Mines Ltd. on Noront-held claims. It was this drilling that led to the identification of ultramafic rock, which thus highlighted the potential for Ni-Cu-PGE-Cr mineralization in the area.

Noront discovered the Eagle One (now termed Eagle's Nest) magmatic massive sulphide (MMS) deposit while searching for VMS mineralization in 2007. Follow up testing of other airborne anomalies in early 2008 led to the discovery of the Eagle Two shear hosted sulphide deposit nearby, as well as the AT12 MMS deposit to the east of Eagle's Nest. It was the drilling of the Eagle Two deposit that led to the later discovery of the Blackbird chromite deposits in 2008 and the Blackstone chromite occurrence in 2010, which are both hosted by the same ultramafic complex as Eagle's Nest. In 2009, the Thunderbird vanadium occurrence was discovered further to the east of Blackbird – Eagle Two – Eagle's Nest in a large mafic body (thought to be the compliment to the Eagle's Nest – Blackbird ultramafic body), and in late 2009, the Triple J gold occurrence was discovered in the area of Eagle Two and Blackbird, in a contact zone between the granodiorite and Blackbird-hosting peridotite.

Noront completed a preliminary feasibility study in October 2011 (Burgess et al. 2011) to evaluate the development of the Eagle's Nest deposit, a high-grade Ni-Cu-Pt-Pd mineralized pipe-like body that is approximately 60 by 200 metres wide, and extends to depths beyond 1600 metres. This study indicated that the proposed mine infrastructure would be constructed underground. A contained, buried pipeline would then pump and transport a slurry of nickel-copper concentrate from the mill at the Eagle's Nest mine site to Webequie Junction, 90 kilometres west of the proposed mine site. From there, the concentrate would be dewatered and loaded for bulk transportation along a proposed 210 kilometre-long all-season road to Highway 808 north of Pickle Lake, Ontario. Transportation would then continue along the existing highway through Pickle Lake to the proposed Savant Lake concentrate handling facility. Development of a 105 kilometre-long winter road would provide a road connection from Webequie Junction to the Eagle's Nest mine site. This proposed infrastructure plan is termed the "East-West Corridor Alternative". In May, 2012, the Ontario Government announced their support for a north-south access route (the "North-South Corridor Alternative"), which provides access to the Ring of Fire via an access road from Nakina, Ontario. Noront adopted this proposed infrastructure corridor as the base case for the Eagle's Nest project in their 2012 feasibility study (Burgess et al. 2012). However, Noront has retained the originally designed East-West Corridor as an alternative, and in order to support construction activities, Noront plans to upgrade the existing winter road along the existing East-West Corridor from Pickle Lake to Webequie, in conjunction with the First Nations that currently use this route. This will include increasing funding to develop the main winter road towards Webequie and development of a new winter road leading east to the project site from south of Webequie, at Webequie Junction.

In 2011, as a part of Noront’s ongoing regional exploration program in the Ring of Fire, Noront’s team of geologists scanned the available regional geological and geophysical data in search of potential sites for favourable host-rock, which in turn would hopefully contain similar types and amounts of mineralization as seen in the Eagle’s Nest – Blackbird area. Using this data, a specific area, the Webequie Junction property, was chosen for a grass-roots exploration drill program, and claims were staked. This exploration program had a number of goals in mind: to test and understand the geology and mineral potential in this previously un-explored area; to test the geophysical anomalies in this area; to condemn the ground – in other words, to rule out this area for further follow-up or detailed exploration; to test the overburden in the area to see if there were any boulders, cobbles, or pebbles that may be composed of favourable host-rock (for example, peridotite that may be nickel-bearing or that may lead to nickel-bearing peridotite); and to test the overburden and bedrock underneath it as a potential aggregate source for future mine and infrastructure development in the area (for example, to test the depth to bedrock, and to test the quality, type, and amount of potential aggregate-source material). As this was a grass-roots exploration program, it was felt as though the most fiscally responsible course of action was to test the overburden first, and if any favourable geology was encountered, a diamond drill program would be initiated in the future. The specific exploration sites could also then be used, after the fact, as sites for environmental baseline studies in conjunction with Noront’s feasibility technical team.

The initial proposed drill sites were selected by Noront’s geology team in conjunction with Noront’s feasibility technical team. The project was overseen by Eric Mosley, Exploration Manager – Noront, and Mark Baker (P.Eng.), VP Projects – Noront. The drill locations were selected by Eric Mosley, Mark Baker, and Matt Downey, and holes were spotted in the field as required, and position was verified using handheld GPS.

Five (5) overburden drill holes are hereby presented in detail. A master collar location table for the entire project is included, as are location plans, geological cross-sections, and overburden and bedrock logs. Results are presented in the appendix.

1.1 Location and Access (see Figure 1)

The Webequie Junction property is located approximately 90 kilometres west of the proposed Eagle’s Nest mine site in the Ring of Fire. Figure 1 displays the

location of the claim group in Northern Ontario, some 290 kilometres north of the town of Nakina. The claim group is also located some 30 kilometres southeast of the First Nation community of Webequie, and approximately 160 kilometres northwest of the First Nation community of Marten Falls. Specifically, the approximate center to this claim group is located at 464300mE, 5844000mN, using datum NAD83, projection method UTM Zone 16N (NTS 43D/12 and 43D/13).

Diamond drill crews from Determination Drilling and overburden core logging crews from Knight Piésold Consulting Ltd. operated at the Webequie Junction site, and were accommodated in the community of Webequie. Access to the drill sites was by a helicopter based out of Webequie, and the crews flew daily to and from the sites. Access to Webequie is serviced by fixed wing aircraft, specifically by Nakina Air and Wasaya Airways, as well as other chartered flights. There is winter road access during the winter months.

1.2 Claims (see Figure 2 and Table 1)

A total of 2 claims are being filed for assessment here within. The Webequie Junction overburden drilling program covered only one claim, TB 4255732, but the remaining claim, TB 4255733, is contiguous to it (see Figure 2). The claim numbers being filed are thusly: TB 4255732 and TB 4255733. These claims are located within the townships of ABELSON LAKE AREA and FALAN LAKE AREA, respectively. These claims were staked and recorded on August 10, 2011. Please refer to Table 1 for a claim-by-claim detail of township area, recording date, due date, status, and percent option. Please refer to Figure 2 for a detailed map of the claim group being filed in this report.

1.3 Personnel

For the Webequie Junction drill project, Noront contracted the drilling to Determination Drilling of Hamilton, Ontario. There was a driller and helper from Determination Drilling that worked only during daylight hours. The overburden was logged and sampled by Reagan McIsaac (Ph.D.) of Knight Piésold Consulting, and was reviewed by Mark Baker, P.Eng. (Noront) and Bronwyn Azar, P.Geo. (formerly of Noront). The bedrock that was recovered was logged by Bronwyn Azar, P.Geo. (formerly of Noront). Mark Baker, P.Eng. (Noront) and Eric Mosley (Noront) oversaw the project to complete the work described herein.

2. General Geology (see Figures 3 to 6)

The project area is situated to the west of the Ring of Fire ('ROF') in Northern Ontario (also known as the McFaulds Lake area). This area is underlain by rocks of the northwestern part of the Archean Superior Province, which is the world's largest continuously-exposed Archean craton. The northwestern Superior Province is composed of a series of major Mesoarchean volcanic and plutonic belts trending from west to east that each formed as separate microcontinents <3.0 Ga, and are separated by younger Neoarchean metasedimentary belts and crustal-scale faults. These continental fragments underwent rifting and lateral transport through processes considered to be a mixture of modern horizontal plate tectonics (such as those presently operative in largely oceanic domains such as the western Pacific Ocean) and vertical plate tectonics (those that would have occurred during the Archean when the continents were thinner, hotter, and less dense). Later subduction of the oceanic crust between these microcontinents eventually led to their collision and amalgamation to form the current geometry of the Superior Province.

The Webequie Junction area is interpreted to consist of massive to foliated tonalite-granite-granodiorite, proximal to the McFaulds Lake greenstone belt. It lies within the North Caribou terrane of the western Superior Province (Stott et al. 2010; Stott 2011), formerly known as the Sachigo Subprovince, the Sachigo Superterrane, and the North Caribou Superterrane (Rayner and Stott 2005; Percival et al. 2006; Stott 2007). The North Caribou terrane is comprised of a core (central part of the terrane), the Island Lake domain in the north and west, the Uchi domain in the south, and the Oxford-Stull domain in the north and east (Stott et al. 2010; Stott 2011). The North Caribou terrane is largely Mesoarchean in age and is dominated by two major periods of plutonic and metamorphic activity at 2.895 to 2.89 Ga and 2.86 to 2.85 Ga, however, the Island Lake domain and the Uchi domain contain widespread evidence of Neoarchean magmatism and sedimentation (Stott et al. 2010). As well, several older greenstone belts, from 3.0 to 2.9 Ga, are preserved in the terrane, as are ca. 3.0 to 2.9 Ga rift sequences (Stott et al. 2010). This terrane also experienced repeated episodes of deformation and medium- to high-grade metamorphism between 3.0 and 2.7 Ga (Percival et al. 2006; Stott 2007, 2008).

In detail, along the margins of the North Caribou core there are remnants of a platformal sedimentary succession of quartzite, arkose, and iron formation (evidence of an older continental margin). This is overlain by mafic to komatiitic lavas which are believed to be the product of rifting of the protocontinental

landmass circa 2.99-2.98 Ga (Percival et al. 2006; Stott 2008). Following rifting, the area underwent periodic episodes of plutonism, arc volcanism, sedimentation, accretion of fragments of intra-oceanic island arcs, and related obduction of oceanic crust as a result of the subduction of oceanic crust underneath it on both its northern and southern margins. The crust accreted onto the margins of the North Caribou core during this period is recognized as the Island Lake domain on the northern and western margins, the Oxford-Stull domain on the northern and eastern margins, and the Uchi domain on the southern margin (Stott 2008; Stott et al. 2010; Stott 2011). It is thusly interpreted that the North Caribou core forms a Mesoarchean basement upon which subsequent Neoproterozoic crust was added via accretion and collision (Stott 2008; Stott et al. 2010).

The Oxford-Stull domain (Thurston et al. 1991; Oxford-Stull Subprovince of Rayner and Stott 2005), which contains the McFaulds Lake greenstone belt at its eastern limit of exposure, runs east-southeast and forms the northern-eastern portions of the North Caribou terrane. It stretches from northwestern Manitoba to north-central Ontario where it extends under the Paleozoic cover rocks of the James Bay Lowlands (Figure 3). Across the breadth of the Oxford-Stull domain, there is a preponderance of Neoproterozoic U/Pb zircon ages in volcanic and plutonic rocks (Stott et al. 2010). As well, this domain is distinguished from other domains of the North Caribou terrane by its lack of pre-3.0 Ga crustal ages as determined by U-Pb dating and Sm-Nd isotope systematics (Stott et al. 2010). It includes several assemblages ranging in age from Mesoarchean (2.87 to 2.83 Ga) to Neoproterozoic volcanism at 2.72 to 2.71 Ga (Stott 2008). U/Pb zircon analyses of volcanic and plutonic rocks near the James Bay Lowlands region give ages from 2.737 Ga to as young as 2.683 Ga, and Nd model ages suggest relatively juvenile crustal growth (Rayner and Stott 2005; Stott 2008; Stott et al. 2010). Mesoarchean crystallization ages are somewhat scarce, and are generally restricted close to the northern and southern boundaries of the domain (Stott et al. 2010). At the southern boundary of this domain lie a series of major ductile shear zones that separate it from the Island Lake domain and the rest of the North Caribou terrane. In the McFaulds Lake area this boundary is called the Stull-Wunnummin fault. The southern contact of the Oxford-Stull domain with the Island Lake domain shows a prevalence of Mesoarchean zircon ages and isotopic evidence suggests that the two domains share a constructive history prior to the development of the Stull-Wunnummin fault (Stott 2008). The northern boundary of the Oxford-Stull domain is the North Kenyon fault, a major ductile strike-slip deformation corridor that separates the entire North Caribou terrane from the Hudson Bay terrane to the north, which is recognized as another older (> 3.0 Ga) continental fragment (Stott et al. 2010).

Due to the near-total absence of outcrops, no such greenstone belt was recognized in the McFaulds Lake area until 1999 (Percival et al. 1999), and a comprehensive understanding of the tectonic history of the McFaulds Lake greenstone belt has yet to be established. The rare outcrops are predominantly found along water courses and are mostly erosion-resistant granitoids. The oldest known rock within 100 kilometres of McFaulds Lake is a tonalite to granodiorite gneiss with an igneous emplacement age of 2813 ± 4 Ma (Rayner and Stott 2005). Seven other plutonic rocks from within the Oxford-Stull domain dated by Rayner and Stott (2005) range in age from 2727 to 2683 Ma, and other nearby volcanic and plutonic rocks have U/Pb zircon ages of 2737 to 2696 Ma (Stott 2008). Recently, age dates of plutonic rocks (a gabbro and a tonalite) in the McFaulds Lake greenstone belt within Noront's McFaulds Lake project areas gave ages of 2773 to 2734 Ma (Mungall et al. 2010; Metsaranta and Houlé 2011), and a nearby dacitic tuff north of McFaulds Lake gave an age of 2737 Ma (Rayner and Stott 2005; Metsaranta and Houlé 2011). These plutonic age dates are in common with other Neoproterozoic plutonic age dates from the northwestern Superior Province. In the end, information on the local geology of the McFaulds Lake greenstone belt is limited to observation from geophysical surveys and diamond drilling.

A key feature of the McFaulds Lake area is a prominent linear magnetic high (associated with laterally extensive formational conductors) that is continuous for up to tens of kilometers, and forms a semi-circle, ~60 kilometres in diameter from north to south, as seen on the regional airborne magnetic anomaly maps. This prominent linear magnetic high is known as the Ring of Fire (ROF). The ROF has been interpreted as a regionally extensive iron formation that was deposited along the margins of a regional scale granodiorite pluton, one that had been intruded into and caused doming of supracrustal rocks of the Oxford-Stull domain. Along the length of the ROF iron formation, it is generally intercalated with mafic to intermediate lavas and tuffs and intruded by a variety of mafic to intermediate sills and dykes. Numerous diamond drill hole intersections demonstrate that the high magnetic susceptibility of the ROF is predominantly due to the presence of silicate- and oxide-facies iron formation that locally contains laminated to massive beds of pyrrhotite and pyrite.

Subsequent to the deposition of the ROF iron formation, a major ultramafic magmatic event (the ROF Intrusion) was marked by the emplacement of peridotitic to dunitic dykes and sills of the Eagle's Nest-Blackbird (ENB) Complex. These ultramafic bodies cut through older tonalitic to granodioritic intrusions (that structurally underlie the iron formation), and then up through the iron formation and into the overlying mafic to intermediate meta-volcanic rocks. The iron

formation is interpreted to face outward from the ROF, based on layering in ultramafic sills and the settling of magmatic sulphides within ultramafic intrusions. This prominent marker horizon separates older, highly deformed rocks west of the ROF from younger rocks east of the ROF which show a relatively simple aeromagnetic fabric indicative of a simpler deformational history.

Several magmatic Ni-Cu-PGE sulphide occurrences, such as Noront's Eagle's Nest and AT12 deposits, are hosted in ultramafic dykes that lie structurally beneath the iron formation. Extensive layered ultramafic sills (which are considered to form the main intrusion) consisting of dunite, harzburgite, orthopyroxenite, and chromite lie structurally on top of the aforementioned ultramafic dykes. These sills were preferentially developed at the horizon formerly occupied by the iron formation (the iron formation was substituted by the ultramafic body as it was intruded). This most likely occurred via magmatic assimilation. Recently obtained lithochemical and geochronological data indicate that the deposits of the region were formed as part of a single, regional magmatic event, which was also accountable for the formation of the McFaulds Lake VMS deposits and for the intrusion of similar ultramafic and mafic bodies throughout the McFaulds Lake region (Mungall et al. 2010).

The geology of the Webequie Junction area has never been fully examined, and although geological mapping programs, such as in Buse et al. 2009 (Figure 4), and regional geophysical surveys, such as in Ontario Geological Survey 1999 and 2008 (Figure 5 - total magnetic intensity and Figure 6 – second vertical derivative of the total magnetic intensity), have been completed over the area, they only covered the northern portion of the Webequie Junction claim group, and at that were not covered in detail, as the geological and geophysical surveys were completed on a large scale. For Noront's geologists, interest in the area was piqued by the existence of nearby supracrustal assemblages and crustal-scale shear zones (Buse et al. 2009). These supracrustal assemblages, in combination with the shear zones, may be geologically similar to the McFaulds Lake greenstone belt further to the east, and if such a terrane were to exist in the Webequie Junction area, it may be host to ultramafic rocks of similar origin to the Eagle's Nest-Blackbird (ENB) Complex, or may also be host to shear-zone related gold deposits.

Geophysical lineaments, as seen in the regional magnetic data (Figures 5 and 6), and as interpreted in the geological mapping of Buse et al. 2009 as being shear zones, fold hinges, or generally deformed supracrustal assemblages (Figure 4), were priority target areas for the current drill program. As well, areas not covered by the regional surveys were of interest so that Noront's geologists could get an

idea as to the geology there, again in the hopes of finding something of interest that had not been previously discovered. Finally, there was also an interest in the large massive tonalite-granite-granodiorite assemblage (interpreted by Buse et al. 2009) as a potential aggregate source for future mine and infrastructure development.

3. Drill Program (see Figures 7 and 8)

For this project, a crew of two drillers was employed by Determination Drilling, a drill contractor from Hamilton, Ontario. They used a CME 55 rotary drilling rig for all drill holes, and drilled HQ core. Drill supervision was done from the community of Webequie, Ontario. Reagan McIsaac, Ph.D. (Knight Piésold) was the overburden core logger, working under the auspices of Mark Baker, P.Eng. (Noront) in the capacity of project manager. Bronwyn Azar (formerly of Noront) logged the bedrock and compiled the geological data for Noront. The drill program commenced on September 13th, 2011 and was completed October 26th, 2011.

Included in this report is a master drill hole plan map that outlines the drill hole collar locations with respect to their position on Noront claims (Figure 7). A local plan map of the project has also been included (Figure 8). Further to that, local plan maps and drill hole cross-sections have been included for each hole, along with the detailed drill log for each hole, as compiled by Noront (Appendix I). Detailed overburden drill logs, as completed and compiled by Knight Piésold, are found attached to each drill log in Appendix I.

3.1 Webequie Junction Overburden Drilling Project (see Appendix I)

Noront initiated a five drill-hole program at Webequie Junction to log and sample overburden and bedrock in the area, at five different select sites. These sites were somewhat evenly chosen and distributed (taking local topography into consideration) in the north-east corner of Noront claim TB 4225732 in order to test aeromagnetic highs as seen on the total magnetic intensity in Figure 5, geophysical lineaments as seen on the second vertical derivative of the total magnetic intensity in Figure 6, and in order to test the geology of the granodiorite suite (Unit 6 from Buse et al. 2009; Figure 4) for localized occurrences of previously-unmapped supracrustal rocks, ultramafic rocks, or shear zones. These sites were also chosen to test the granodiorite suite itself for potential aggregate-source material. Finally, in combination with the reasons above, the drill sites were also chosen to

investigate areas not covered by the aforementioned regional geological and geophysical surveys.

Knight Piésold was retained by Noront to help facilitate overburden logging, and Noront geologists supervised the overburden logging, and logged any bedrock that was encountered. Groundwater monitoring wells were installed at each location, but these are not detailed in this report. Appendix I details the locations, cross-sections, and geology encountered.

3.1.1 WJ-MW11-01

This hole was drilled to a depth of 16.19m and peat was observed at the surface. The soil was mainly massive (lacking structure) and predominantly contained cobbles with mostly silty sand, some gravel, and trace clay. The cobbles and boulders appeared to be primarily granite or granodiorite. Clay with medium to high plasticity was encountered at shallow depths. The overburden was observed to be poorly to well graded. Results from standard penetration tests indicated that the relative density of the overburden material was loose to very dense. Sample recovery ranged from 0 to 100%. Throughout the hole, there were intervals of no recovery, where material was suspected to have been washed away by drilling.

Two samples were taken from the hole, one from 2.12 to 2.82m (silty sand) and one from 3.25 to 3.62m (clayey sand). The natural moisture contents were 13.94% and 8.2%, respectively. The second sample had high plasticity.

This hole did not drill into bedrock but did encounter cobbles and boulders of granite-granodiorite in the overburden (with no other rock type found), which was not favourable for mineralization but may indicate a good aggregate-source material in the bedrock beneath. As well, there were a few intervals of gravel which could prove to be a good aggregate source, however, the hole contained mostly silts, sands, and clays of varying sorting, grading, and recovery.

It was thus determined that no further work be done at this site in order to test the mineralization potential of the bedrock beneath, as it was determined that the bedrock was more than likely barren granite-granodiorite. The materials found in the hole may however prove to be a good aggregate source.

3.1.2 WJ-MW11-02

This hole was drilled to a depth of 7.80m and peat was observed at the surface. The soil was mainly massive (lacking structure) and predominantly contained cobbles with mostly silty sand, some gravel, and trace clay. The cobbles and boulders appeared to be primarily granite or granodiorite. Clay with medium to high plasticity was encountered at shallow depths. The overburden was observed to be poorly to well graded. Results from standard penetration tests indicated that the relative density of the overburden material was loose to very dense. Sample recovery ranged from 0 to 100%. There were short intervals of no recovery, where material was suspected to have been washed away by drilling.

One sample was taken from the hole from 4.93 to 5.53m (silty sand). The natural moisture content in the sample was 8.96% and no plasticity measurements could be taken due to the lack of clay.

This hole did not drill into bedrock but did encounter cobbles and boulders of granite-granodiorite in the overburden, again, with no other rock type, which was not favourable for mineralization but may indicate a good aggregate-source material in the bedrock beneath. The hole was rather heterogeneous and largely contained layers of silt and sand of varying thickness, but did contain a couple of longer intervals of gravel (which again may prove to be an aggregate source).

It was thus determined that no further work be done at this site in order to test the mineralization potential of the bedrock beneath, as it was determined that the bedrock was more than likely barren granite-granodiorite. The materials found in the hole may however prove to be a good aggregate source.

3.1.3 WJ-MW11-03

This hole was drilled to a depth of 20.75m and peat was observed at the surface. The soil was mainly massive (lacking structure) and predominantly contained cobbles with abundant silty sand, some gravel, and trace clay. The cobbles and boulders appeared to be primarily granite or granodiorite. The overburden was observed to be poorly to well graded. Results from standard penetration tests indicated that the relative density of the overburden material was loose to very dense. Sample recovery ranged from 0 to 100%. Throughout the hole, there were intervals of no recovery, where material was suspected to have been washed away by drilling.

One sample was taken from the hole from 2.59 to 3.19m (silty sand). The natural moisture content in the sample was 8.01% and plasticity could not be measured.

This hole drilled into bedrock at 17.55m, at which point it intersected medium grained black-white-pink granite until the end of the hole at 20.75m. The granite was trace to weakly magnetic, moderately altered, and was largely massive, as is typical of granitic basement rocks in the nearby region. No mineralization was noted.

Higher in the hole, cobbles and boulders of granite-granodiorite were encountered (as has been seen in the other drill holes in this area, which are indicative of the bedrock source). This granite bedrock indicates that there are probably no favourable host rocks in the area for mineralization, however, the bedrock is extremely strong and is largely unweathered and unaltered with few discontinuities, which would provide for very good aggregate-source material. Regardless, it was thus determined that no further work be done at this site in order to test the mineralization potential of the bedrock beneath, as it was determined that the bedrock was barren granite.

3.1.4 WJ-MW11-04

This hole was drilled to a depth of 13.40m and peat was observed at the surface. The soil was mainly massive (lacking structure) and predominantly contained cobbles with abundant silty sand, some gravel, and minor clay. The cobbles and boulders appeared to be primarily granite or granodiorite. The overburden was observed to be poorly to well graded. Results from standard penetration tests indicated that the relative density of the overburden material was loose to very dense. Sample recovery ranged from 0 to 100%. There were short intervals of no recovery, where material was suspected to have been washed away by drilling.

One sample was taken from the hole from 8.50 to 9.10m (sand and silt). The natural moisture content in the sample was 7.51% and no plasticity measurements could be taken due to the lack of clay.

This hole did not drill into bedrock but did encounter cobbles and boulders of granite-granodiorite in the overburden, which again was not favourable for mineralization but may indicate a good aggregate-source material in the bedrock beneath. The overburden material was heterogeneous in nature and did not contain much gravel (it was largely silty sand).

It was thus determined that no further work be done at this site either in order to test the mineralization potential of the bedrock beneath, as it was determined that the bedrock was more than likely barren granite-granodiorite. And again, this potential bedrock material may prove to be a good aggregate source.

3.1.5 WJ-MW11-05

This hole was drilled to a depth of 11.80m and peat was observed at the surface. The soil was mainly massive (lacking structure) and predominantly contained cobbles with mostly silty sand, some gravel, and trace clay. The cobbles and boulders appeared to be primarily granite or granodiorite. The overburden was observed to be poorly to well graded. Results from standard penetration tests indicated that the relative density of the overburden material was loose to very dense. Sample recovery ranged from 0 to 100%. There were short intervals of no recovery, where material was suspected to have been washed away by drilling. No samples were taken from this hole.

This hole did not drill into bedrock but did encounter cobbles and boulders of granite-granodiorite in the overburden, as has been seen in the other drill holes. The overburden material was heterogeneous in nature and did not contain much gravel (it was largely silty sand).

It was thus determined that no further work be done at this site either in order to test the mineralization potential of the bedrock beneath, as it was determined that the bedrock for the entire area was more than likely barren granite-granodiorite. Finally, the potential bedrock material here and at all of the sites may prove to be a good aggregate source.

4. Conclusions and Recommendations

Although geological mapping and geophysical surveys have covered the Webequie Junction area in the past (albeit on a large scale), the geology of this localized part of the Ring of Fire region of Northern Ontario has never been fully examined. Interest in the area was piqued by the existence of nearby supracrustal assemblages and crustal-scale shear zones, which may be geologically similar to the McFaulds Lake greenstone belt and the Eagle's Nest-Blackbird (ENB) Complex to the east, both of which are hosts to very economically-valuable deposits and mineral

occurrences of nickel, copper, platinum, palladium, VMS-style mineralization, and chromite, and may host valuable gold deposits.

As a part of Noront's ongoing regional exploration program in the Ring of Fire, Noront's team of geologists scanned the regional data and found a target area for a grass-roots exploration drill project at Webequie Junction, approximately 90 kilometres west of Noront's Eagle's Nest deposit and 30 kilometres southeast of the First Nation community of Webequie. This area contained aeromagnetic highs and geophysical lineaments that may have pointed towards localized occurrences of previously-unmapped favourable host-rock (e.g. ultramafic or supracrustal assemblages, or crustal-scale shear zones), or favourable mineralization. The area also potentially contained granitic basement rocks which may, in the future, be an aggregate source for mine and infrastructure development.

Five drill sites were chosen for this drill program at Webequie Junction. They were chosen to test and understand the geology and mineral potential in this previously un-explored area, to test the geophysical anomalies in this area, to condemn the ground if nothing of importance was found (thus eliminating this and nearby areas for future mineral exploration), to test the overburden for traces of favourable host-rock, and to test the overburden and bedrock underneath it as a potential aggregate source for future mine and infrastructure development in the area. As this was a grass-roots exploration program, an overburden drill program was first initiated, and if any favourable geology was encountered, a diamond drill program would be initiated in the future.

The Webequie Junction overburden drill program was completed successfully. Bedrock was only encountered in one drill hole, and it was typical basement granitic material as seen in many parts of the North Caribou terrane. This same granitic material was also encountered throughout the overburden in all five drill holes, and combined with the fact that no favourable host-rock or mineralization was encountered anywhere, it was concluded that this area only contained barren granitic basement rock. No further exploratory diamond drill work was thusly recommended to test the area for mineralization. However, a full program of condemnation drilling could be completed here in the future to ensure that no potentially economic mineralization exists.

Finally, the bedrock encountered (and boulders, cobbles, and pebbles of similar material in the overburden) was extremely strong and was largely unweathered and unaltered with few discontinuities, which could provide for very good aggregate-source material for future mine and infrastructure development of Noront's mineral

projects. Further work is required to completely test the bedrock and overburden here for that purpose.

Respectfully submitted:

Matt Downey, M.Sc., P.Geo., August 7th, 2013

5. References

Burgess H., Gowans R., Jacobs C., and Murahwi C., 2011. NI 43-101 Technical Report, Pre-Feasibility Study, McFaulds Lake Property, Eagle's Nest Project, James Bay Lowlands, Ontario, Canada, for Noront Resources Ltd. By Micon International Ltd., October 6, 2011; unpublished NI 43-101 report, 173p.

Burgess H., Gowans R., Jacobs C., Murahwi C., and Damjanović, B., 2012. Noront Resources Ltd., McFaulds Lake Property, Eagle's Nest Project, Feasibility Study, for Noront Resources Ltd. By Micon International Ltd., October 19, 2012; unpublished NI 43-101 report, 255p.

Buse S., Smar L., Stott G.M., and McIlraith S.J., 2009. Precambrian Geology of the Winisk Lake Area; Ontario Geological Survey, Preliminary Map P.3607, scale 1:100,000.

Metsaranta R.T., and Houlé M.G., 2011. Project Unit 10-004: McFaulds Lake Area Regional Compilation and Bedrock Mapping Project Update. *In* Summary of Field Work and Other Activities 2011, Ontario Geological Survey, Open File Report 6270, p. 12-1 to 12-12.

Mungall J.E., Harvey J.D., Balch S.J, Azar B., Atkinson J., and Hamilton M.A., 2010. Eagle's Nest: a magmatic Ni-sulfide deposit in the James Bay Lowlands, Ontario, Canada. *In* The challenge of finding new mineral resources: global metallogeny, innovative exploration, and new discoveries. Volume II: Zinc-lead, nickel-copper-PGE, and uranium, Society of Economic Geologists, Special Publication 15, p.539-557.

Ontario Geological Survey, 1999. Single Master Gravity and Aeromagnetic Data for Ontario - Geosoft® Format. Ontario Geological Survey, Geophysical Data Set 1036.

Ontario Geological Survey, 2008. Ontario airborne geophysical surveys, Magnetic Data, Grid and Profile Data (ASCII and Geosoft® Formats) and Vector Data, Webequie Area; Ontario Geological Survey, Geophysical Data Set 1059.

Percival J.A., Breaks F.W., Brown J.L., Corkery M.T., Devaney J., Dubé B., McNicoll V., Parker JR., Rogers N., Sanborn-Barrie M., Sasseville C., Skulski T., Stone D., Stott G.M., Syme E.C., Thurston P.C., Tomlinson K.Y., and Whalen J.B., 1999. Project 95034. Evolution of Archean continental and oceanic domains

in the Western Superior Province: 1999 NATMAP results. Ontario Geological Survey Open File Report 6000, Summary of Field Work and Other Activities 1999, 17-1 to 17-16.

Percival J.A., Sanborn-Barrie M., Skulski T., Stott G.M., Helmstaedt H., and White D.J., 2006. Tectonic evolution of the western Superior Province from NATMAP and Lithoprobe studies. *Canadian Journal of Earth Science* 43, 1085-1117.

Rayner N., and Stott G.M., 2005. Discrimination of Archean domains in the Sachigo Subprovince: a progress report on the geochronology. *In* Summary of Field Work and Other Activities 2005, Ontario Geological Survey, Open File Report 6172, p 10-1 to 10-21.

Stott G.M., 2007. Precambrian Geology of the Hudson Bay Lowland Interpreted from Aeromagnetic Data, poster, Ontario Exploration and Geoscience Symposium, Sudbury Ontario, December 11-12, 2007.

Stott G.M., 2008. Precambrian geology of the Hudson Bay and James Bay lowlands region interpreted from aeromagnetic data – east sheet; Ontario Geological Survey, Preliminary Map P.3598-Revised, scale 1:500,000.

Stott G.M., Corkery M.T., Percival J.A., Simard M., and Goutier J., 2010. Project Units 98-006 and 98-007: A Revised Terrane Subdivision of the Superior Province. *In* Summary of Field Work and Other Activities 2010, Ontario Geological Survey, Open File Report 6260, p. 20-1 to 20-10.

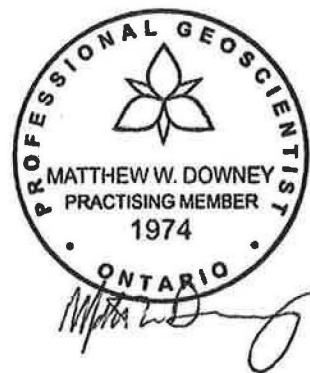
Stott G.M., 2011. A revised terrane subdivision of the Superior Province in Ontario; Ontario Geological Survey, Miscellaneous Release—Data 278.

Thurston P.C., Osmani I.A., and Stone D., 1991. Northwestern Superior Province: Review and terrane analysis. *In* Geology of Ontario. Edited by P.C. Thurston, H.R. Williams, R.H. Sutcliffe, and G.M. Stott. Ontario Geological Survey, Special Vol 4, Part 1, pp. 81-144.

CERTIFICATE

I, Matt Downey, M.Sc., P. Geo., of 26 Gill Crescent, Ajax, Ontario, do hereby certify that:

1. I am a geologist in the Province of Ontario with eight years of experience in the mineral exploration industry. I have an Hon. B.Sc. from the University of Toronto, Toronto, Ontario and an M.Sc. from the University of Waterloo, Waterloo, Ontario.
2. I have worked on the Projects (as defined in this report) as a Senior Geologist and GIS/Data manager since September 2008.
3. I visited the Projects (as defined in this report) in September 2009 and in February 2011.
4. I obtained my P. Geo status within the Province of Ontario (APGO) in March, 2011.
5. I am responsible for the preparation of this report, except as provided for or disclaimed in the report, based on the sources and documents described in the report.
6. As of the date of this report, I am not aware of any material fact or material change with respect to the subject matter of this report, which is not reflected in this report, the omission to disclose which makes this report misleading.
7. I am a Senior Geologist for Noront Resources Ltd. and handle all data management and map creation, and help oversee Noront's exploration projects.
8. I hereby give my consent to Noront Resources Ltd to use this report in support of their application for assessment credit on the subject property.

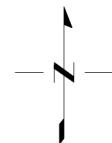
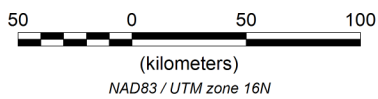


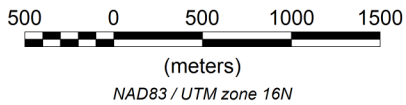
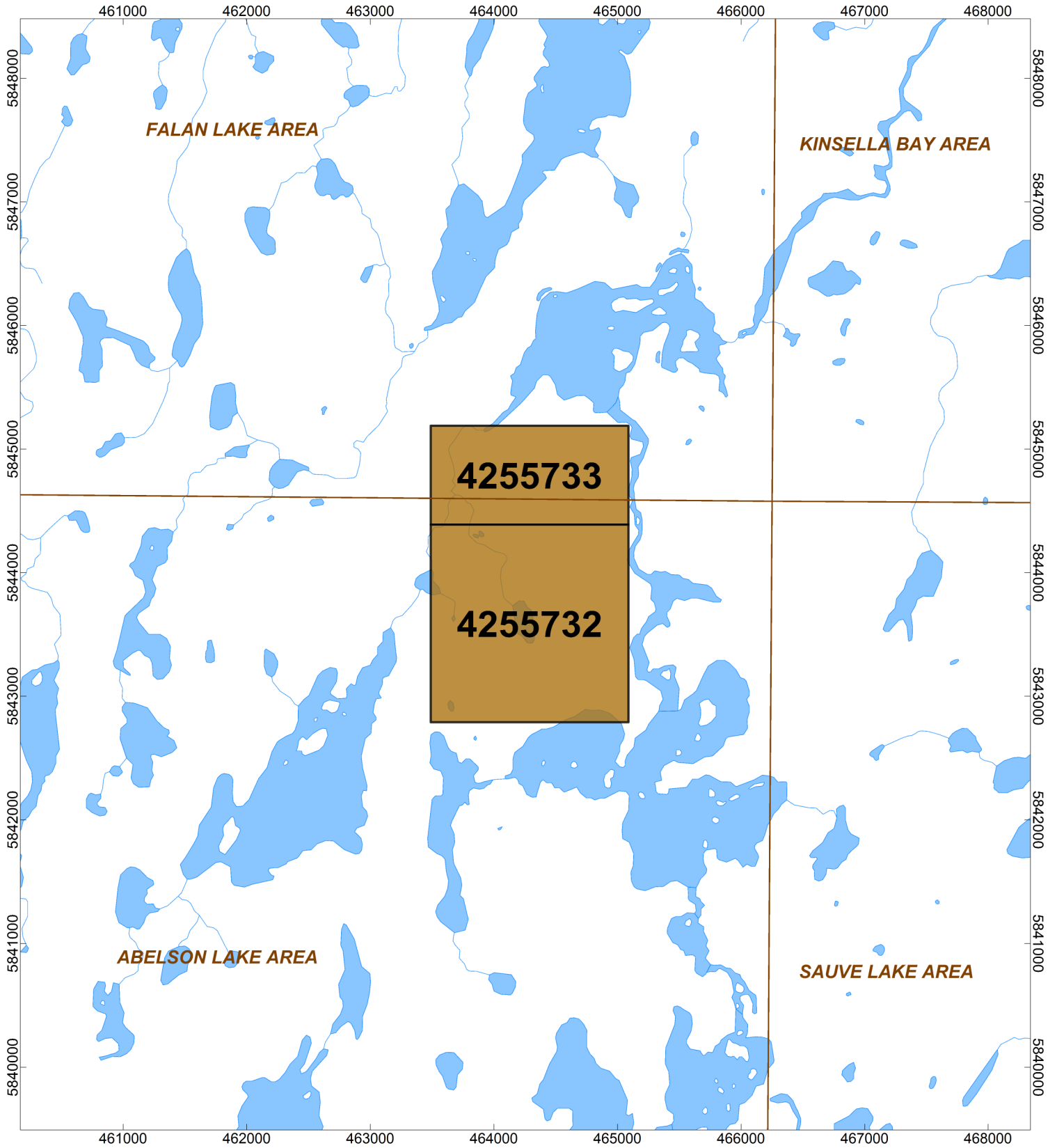
Matt Downey, M.Sc., P. Geo., August, 2013
Toronto, Ontario



Noront Resources Ltd., 2013

FIGURE 1
LOCATION MAP



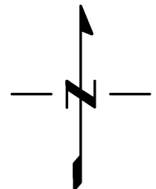


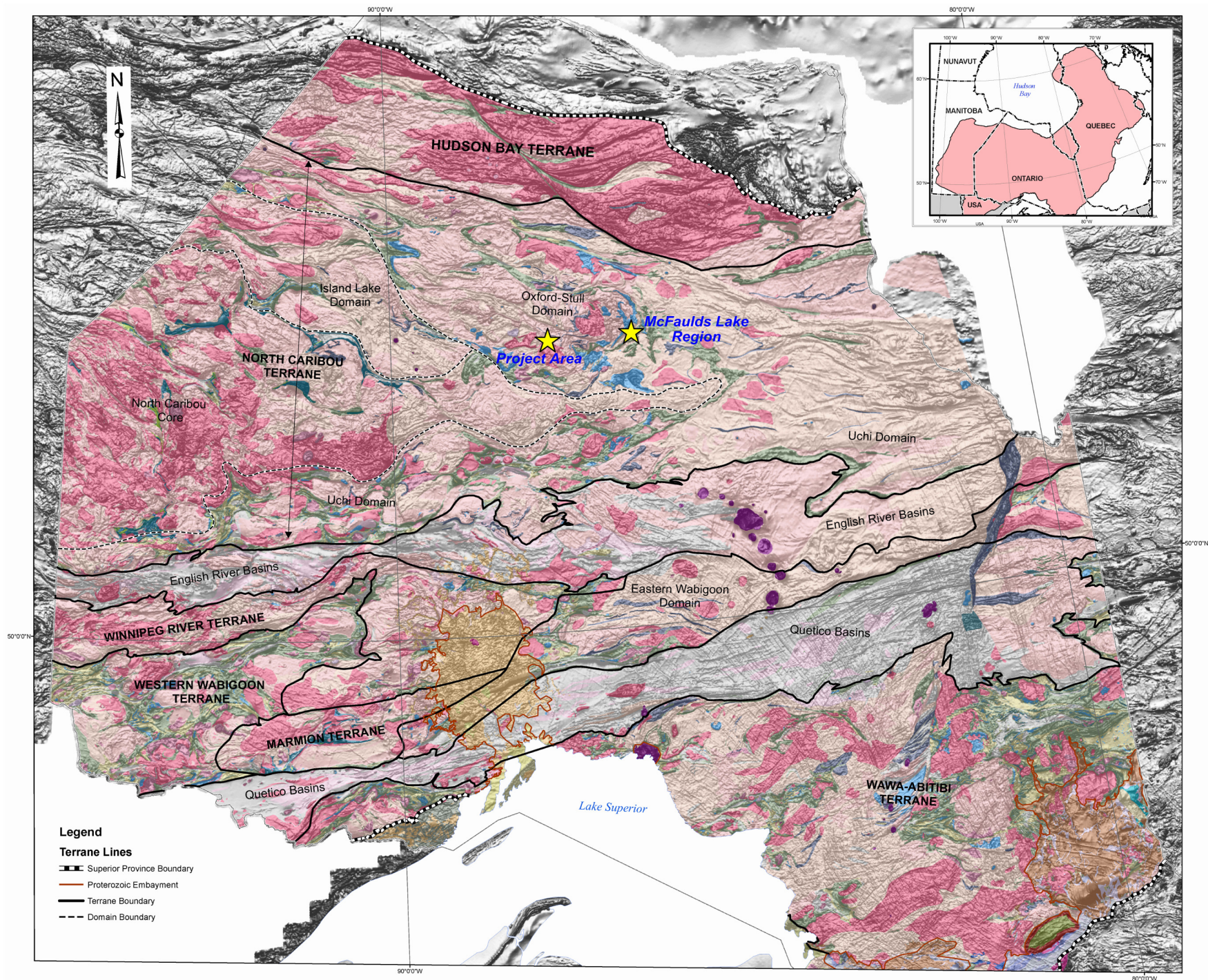
Noront Resources Ltd., 2013

FIGURE 2

CLAIM GROUP MAP

*Claims with brown in-fill are those of Noront Resources being filed herein
Brown lines represent Township boundaries*

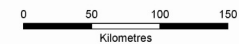


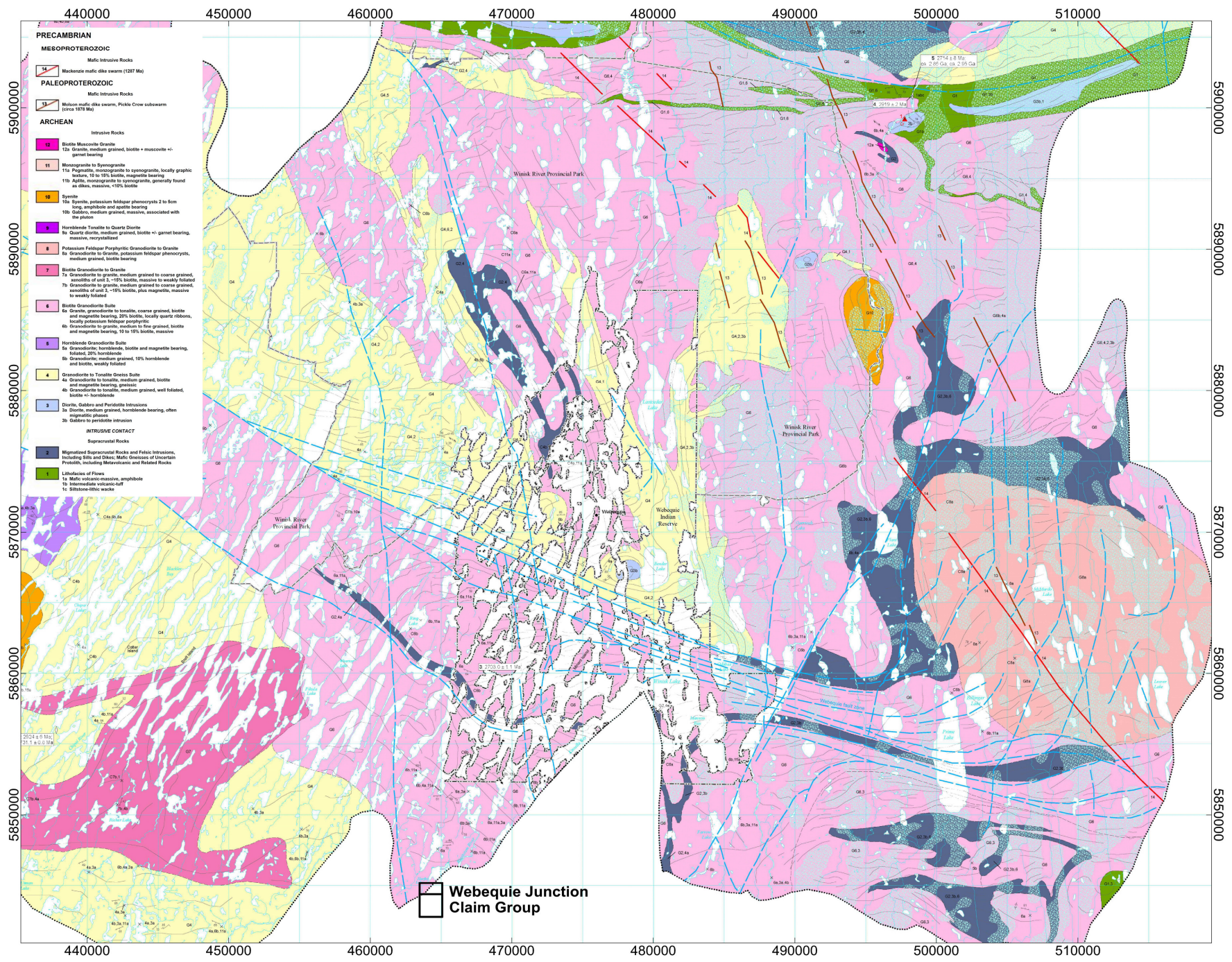


The boundaries and terminology are a revision to Figure 20-2 of Stott et al. in Summary of Field Work and Other Activities 2010, Ontario Geological Survey, Open File Report 6260, p.20-3.

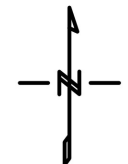
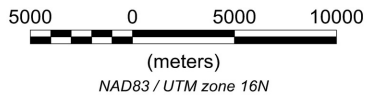
Cartographic production and GIS compilation of data by J.E. Chartrand.

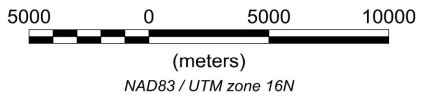
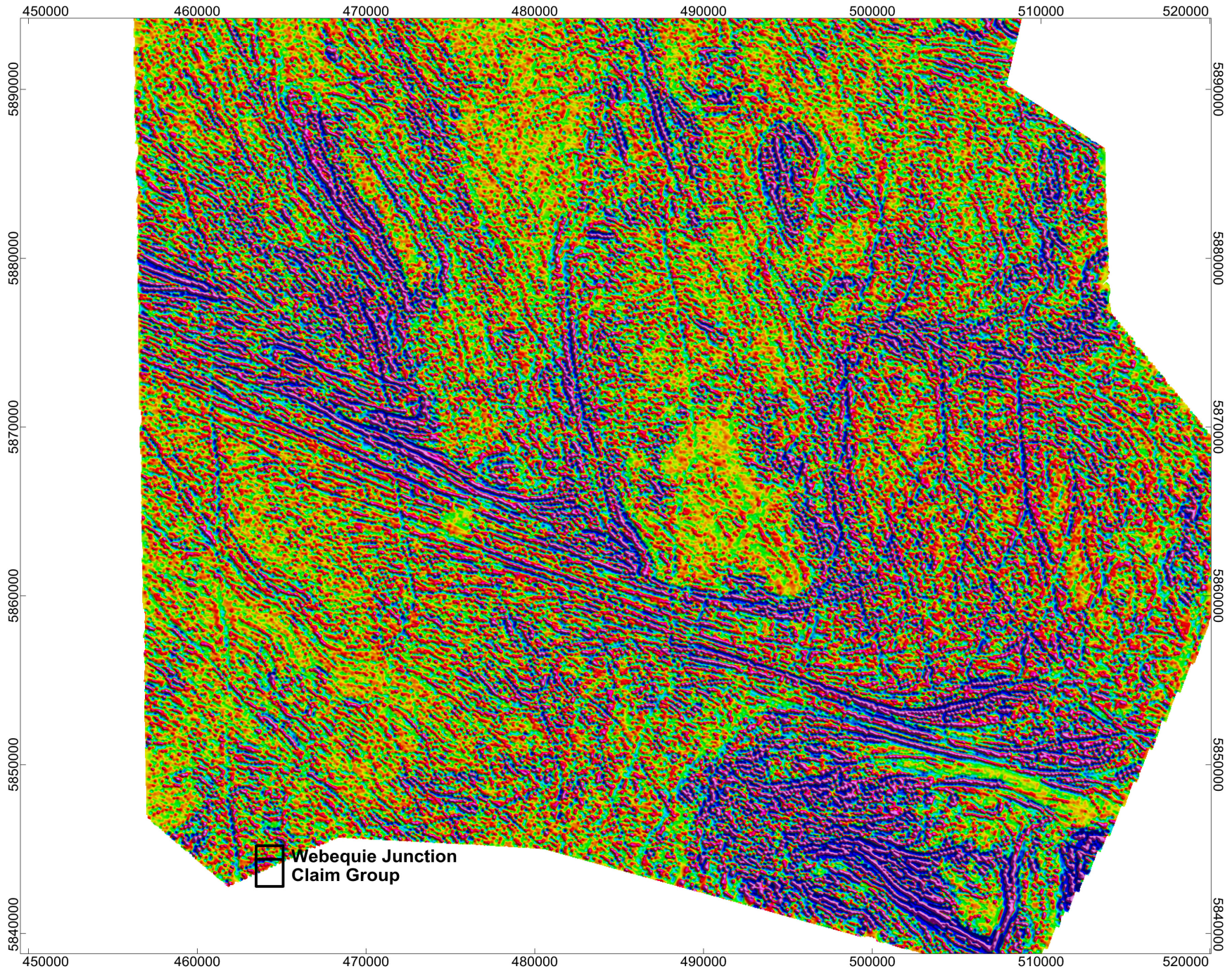
Noront Resources Ltd., 2013
FIGURE 3
Ontario Superior Province Geology
From Stott 2011



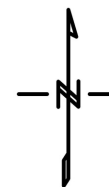


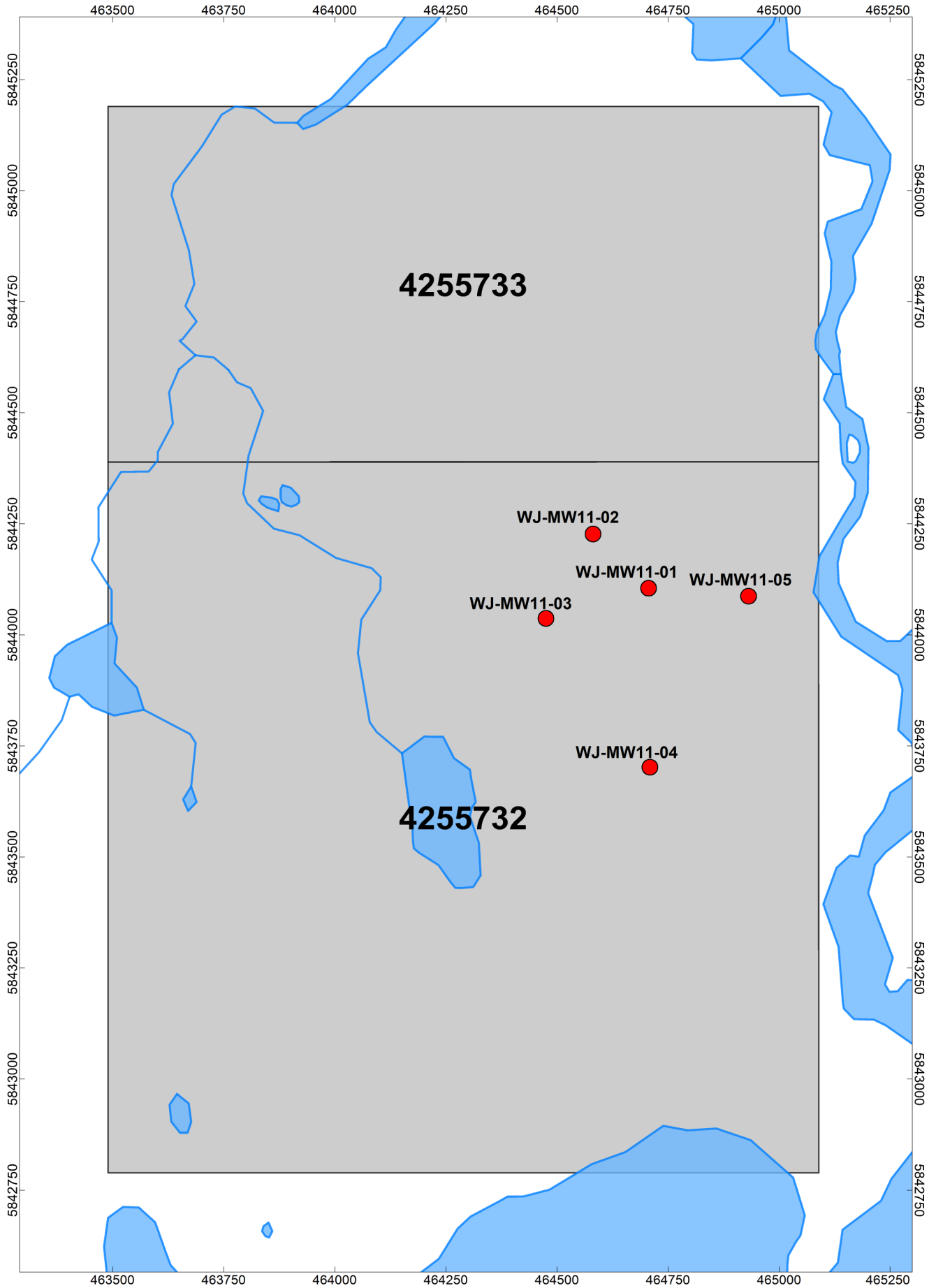
Noront Resources Ltd., 2013
 FIGURE 4
 Local Geology
 From Buse et al. 2009





Noront Resources Ltd., 2013
FIGURE 6
 Regional 2nd Vertical Derivative (Levelled)
 From Ontario Geological Survey GDS1059 (2008)



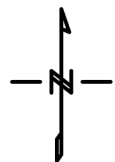
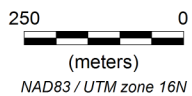


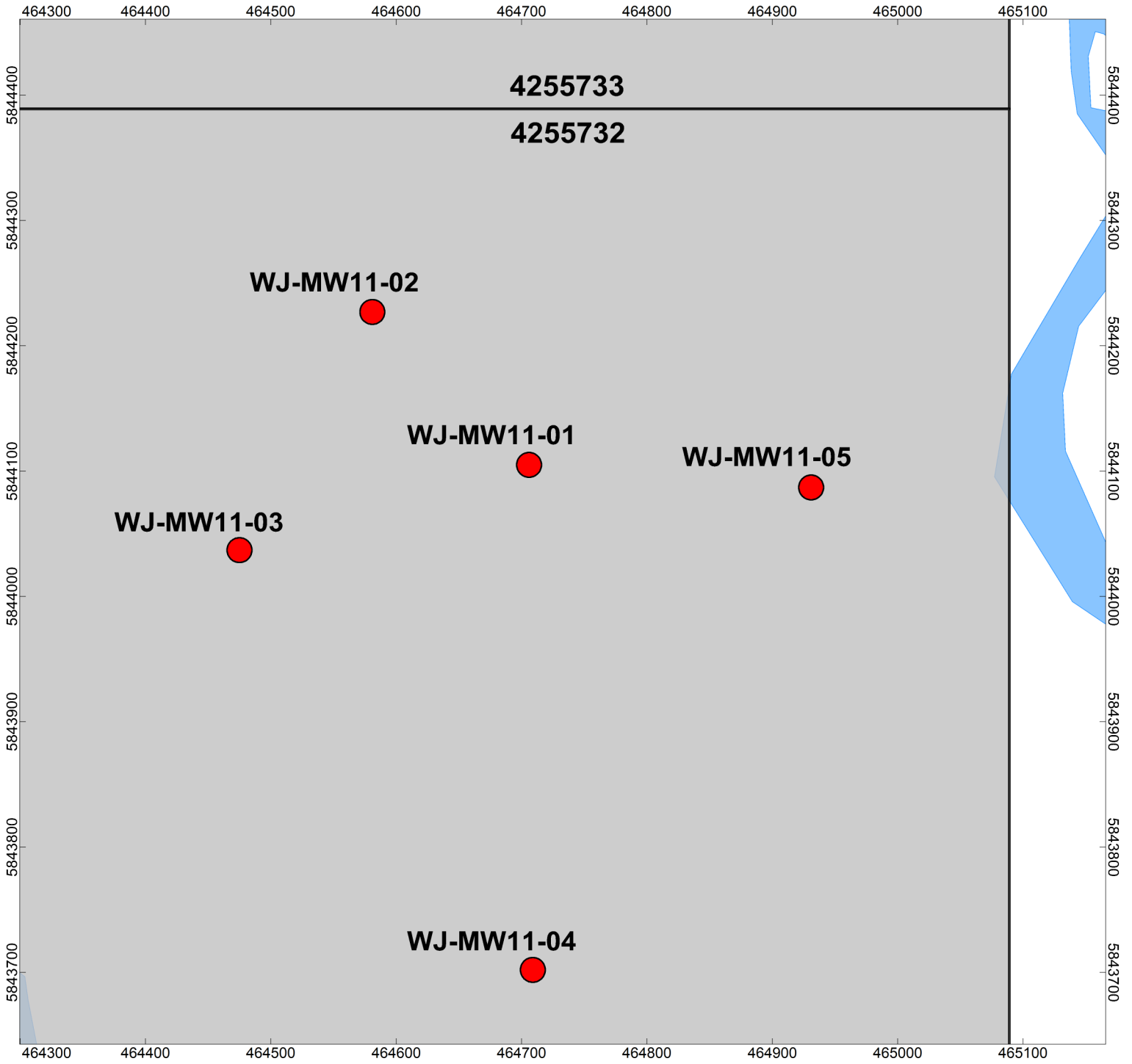
Noront Resources Ltd., 2013

FIGURE 7

Master Drill Hole Plan View

Claims with grey in-fill are those of Noront Resources being filed
 Filled red circles are Noront drill hole collar locations





Noront Resources Ltd., 2013

FIGURE 8

Webequie Junction Drill Hole Plan View

Claims with grey in-fill are those of Noront Resources being filed
 Filled red circles are Noront drill hole collar locations

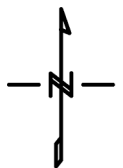
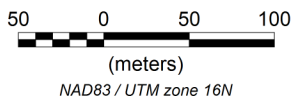


Table 1: Noront Claims Status and Information

Claim Number	Township/Area	Recording Date	Claim Due Date	Status	Percent Option	Claim Holder
4255732	ABELSON LAKE AREA	2011-Aug-10	2013-Aug-10	Active	100%	Noront Resources Ltd.
4255733	FALAN LAKE AREA	2011-Aug-10	2013-Aug-10	Active	100%	Noront Resources Ltd.

Appendix I

Webequie Junction Project

Overburden Drill Holes

Master Plan Map

Collar Table

Local Plan Maps (one map per hole)

Vertical Cross Sections (one map per hole)

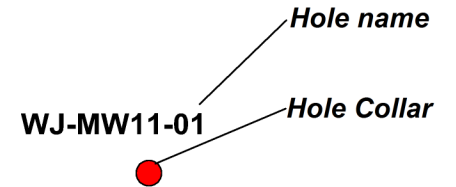
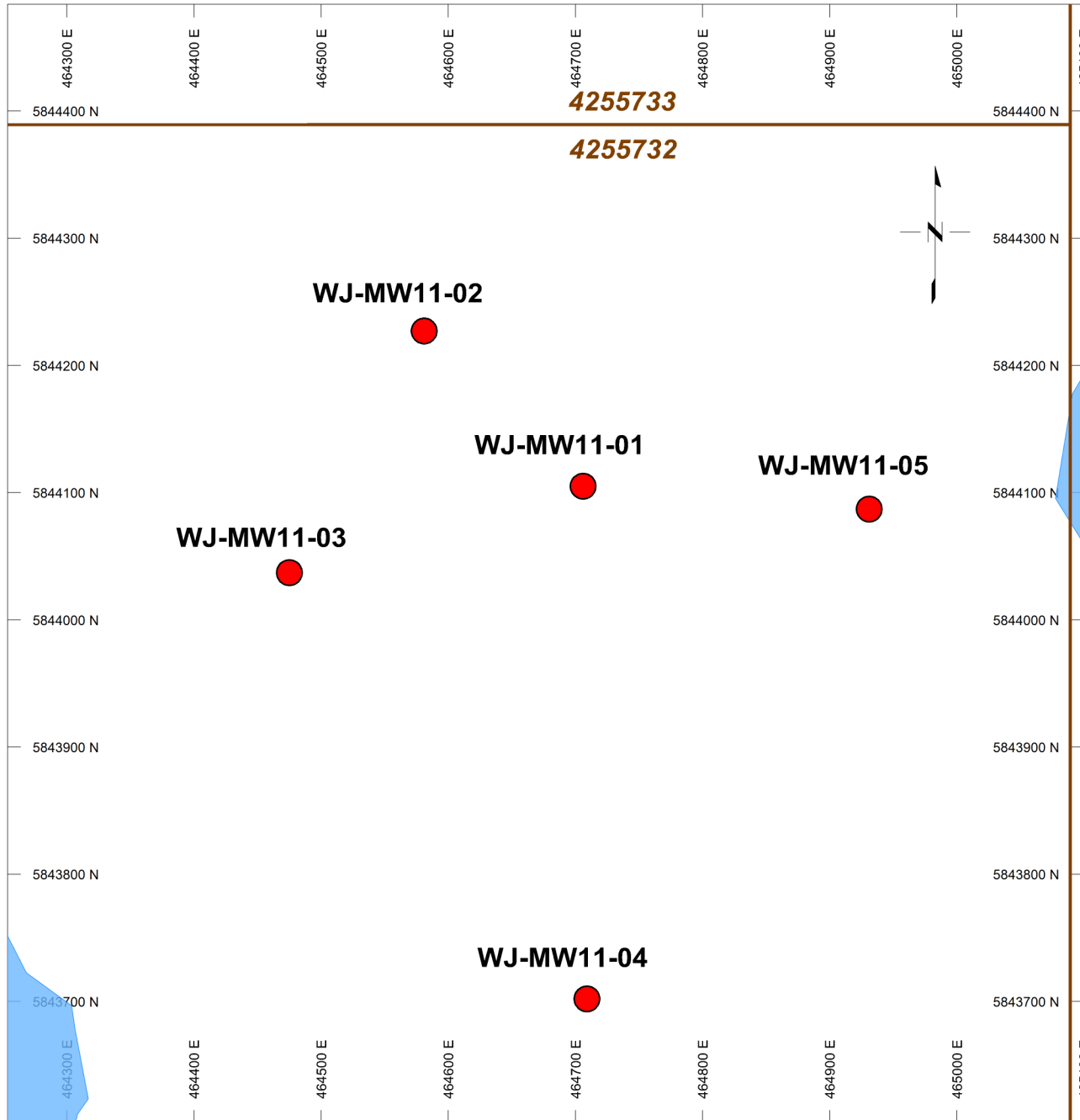
Drill Logs (one Noront drill log per hole
& one Knight Piésold drill log per hole)



HOLES PLOTTED

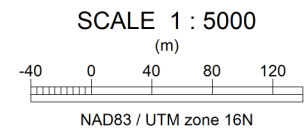
TOTAL 5

WJ-MW11-01	WJ-MW11-02	WJ-MW11-03
WJ-MW11-04	WJ-MW11-05	



PLAN SPECS:

REF. PT. E, N	464700 m	5844000 m
EXTENTS	847 m	879.5 m



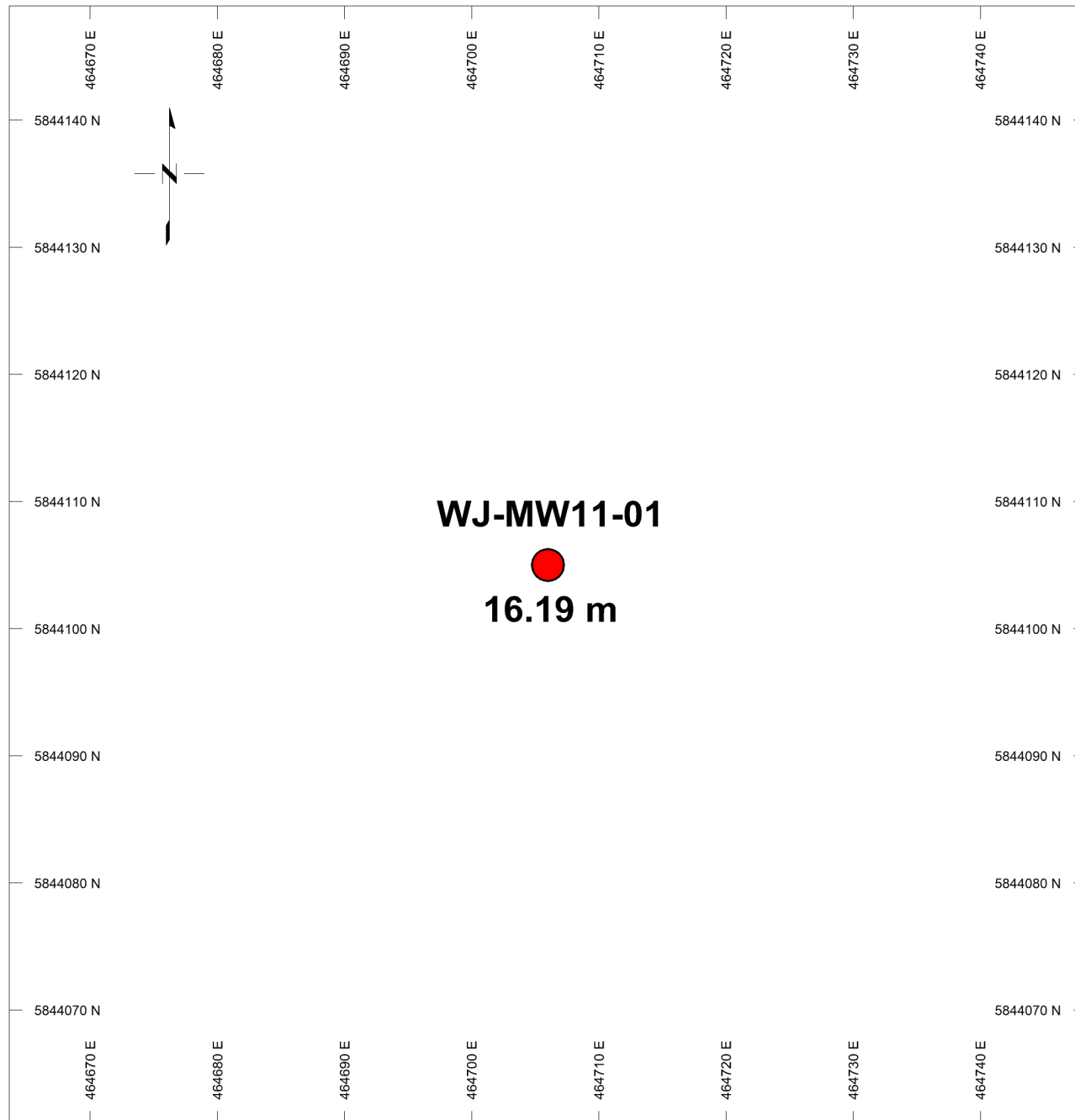
Noront Resources Ltd.


**2011 Webequie Junction
Overburden Drill Program**


Master Plan Map

Webequie Junction Collar Table

Hole Number	Easting	Northing	Elevation	Azimuth	Dip	EOH (m)	Start Date	End Date	Claim(s)	Township	Contractor	Claim Holder	Core Logged?
WJ-MW11-01	464706	5844105	240	0	-90	16.19	September 20, 2011	September 24, 2011	4255732	ABELSON LAKE AREA	Determination Drilling	Noront Resources	Yes
WJ-MW11-02	464581	5844227	233.5	0	-90	7.80	September 27, 2011	September 28, 2011	4255732	ABELSON LAKE AREA	Determination Drilling	Noront Resources	Yes
WJ-MW11-03	464475	5844037	238	0	-90	20.75	October 8, 2011	October 17, 2011	4255732	ABELSON LAKE AREA	Determination Drilling	Noront Resources	Yes
WJ-MW11-04	464709	5843702	245	0	-90	13.40	October 19, 2011	October 20, 2011	4255732	ABELSON LAKE AREA	Determination Drilling	Noront Resources	Yes
WJ-MW11-05	464931	5844087	240	0	-90	11.80	October 5, 2011	October 6, 2011	4255732	ABELSON LAKE AREA	Determination Drilling	Noront Resources	Yes

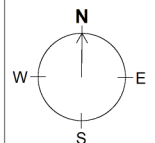
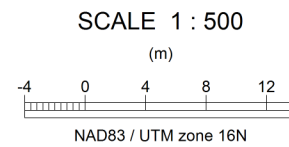


WJ-MW11-01

16.19 m

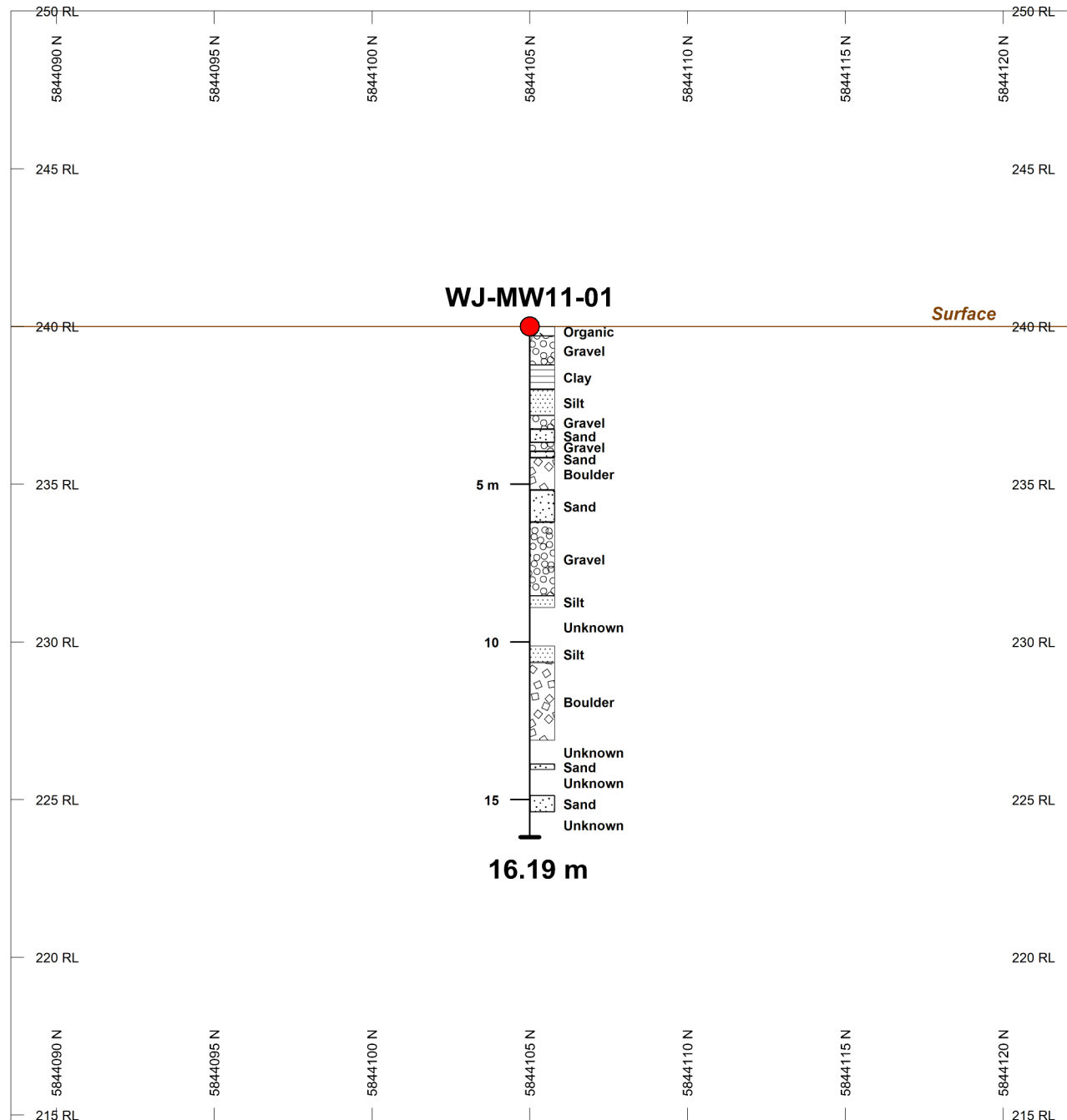
WJ-MW11-01 *Hole name*
 *Hole collar*
16.19 m *Final depth*

PLAN SPECS:

REF. PT. E, N	464700 m	5844000 m
EXTENTS	84.7 m	87.95 m



Noront Resources Ltd.
Webequie Junction
2011 Drill Program
WJ-MW11-01 Plan View



ROCK CODES

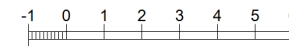
Pattern	Rock Type
	Boulder
	Clay
	Gravel
	Organic
	Sand
	Silt
	Unknown

SECTION SPECS:

REF. PT. E, N	464706 m	5844106 m
EXTENTS	33.88 m	35.18 m
SECTION TOP, BOT	250 m	214.8 m
TOLERANCE +/-	25 m	

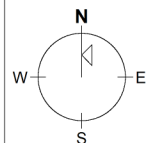
SCALE 1 : 200

(m)



NAD83 / UTM zone 16N

AZIMUTH = 0°



Noront Resources Ltd.

Webequie Junction

2011 Drill Program

WJ-MW11-01 Section View



Hole Number: **WJ-MW11-01**

Units: Metric

Project Number:	Webequie Junction	Coordinates Grid:	UTM83-16		
Project Name:	Webequie Junction	Coordinate Type Code:	Handheld GPS		
Planned Hole #:		Easting (m):	464706	Collar Azimuth:	0
Date Started:	Sep 20, 2011	Northing (m):	5844105	Collar Dip:	-90
Date Completed:	Sep 24, 2011	Elevation (m):	240	Final Depth (m):	16.19
Logged By:	Bronwyn Azar, Noront				
Overburden Logged By:	Reagan McIsaac, Knight Piésold				
Collar Survey:	No	Hole Size:	HQ	Contractor:	Determination Drilling
Multishot Survey:	No	Core Stored:	No	Core Stored At:	Esker Camp
Pulse EM Survey:	No	Hole Cemented:	No	Workplace:	Webequie Junction & Esker Camp
Is Hole Plugged:	No				
Hole Purpose:	Hole was drilled to: 1) test the geology and mineral potential in this previously unknown area; 2) test geophysical anomalies in the area; 3) 'condemn' the ground - i.e. to determine whether or not there are any mineral (and thus drill) targets in this area after having learned a little about the geology of the area; 4) test the overburden in this area to see if there are any boulders of favourable host rock (e.g. peridotite or nickel-bearing pebbles, cobbles, boulders); 5) test the overburden as a potential aggregate source; 6) reach any bedrock in the area via one or more of the holes drilled here (to test the depth to bedrock and type and condition of bedrock).				
Hole Results:	Hole did not encounter bedrock but did encounter cobbles and pebbles of granite-granodiorite (not favourable for mineralization but might be good for aggregate source). The overburden was poorly to well sorted & graded, and contained a few intervals of clay and washed out intervals (not good for aggregate source). The silts and sands were loose to very dense and recovery was from 0 to 100%. There were a few intervals of gravel which could be an aggregate source, however, the hole contained mostly silts, sands, and clays of varying sorting, grading, and recovery. The bedrock beneath (which was not encountered) was granite-granodiorite however, which may provide for an aggregate source.				
Comments:	A groundwater monitoring well was also installed here for environmental baseline studies.				

Hole Number: **WJ-MW11-01**

Units: Metric

Lithology

From	To	Lithology	Lithology Details			
			Colour	Grain Size	Texture	Mineralogy
0.00	0.30	Organic Material Peat.	Dark Brown			
0.30	1.22	Gravel Cobbles. Subangular; black/white/pink, suspected washed by drilling. Cobbles are suspected composed of mica/quartz/feldspar/biotite.	Black-White-Pink	Pebble Sized	Sub-Angular	Feldspar, Quartz, Mica
1.22	2.00	Clay Clay. Trace sand, fine; medium plasticity, light brown, firm to stiff, moist.	Light Brown	Fine Grained		
2.00	2.82	Silt Silt. Sandy silt, fine to coarse; some gravel, fine, angular to subangular; some clay; well graded, medium plasticity, brown, dense, massive, wet.	Brown	Fine to Coarse Grained	Silty; Angular	
2.82	3.25	Gravel Cobbles. Subangular; black/white/pink, suspected washed by drilling. Cobbles are suspected composed of mica/quartz/feldspar/biotite.	Black-White-Pink	Pebble Sized	Sub-Angular	Mica, Quartz, Feldspar
3.25	3.68	Sand Sand. Silty sand, fine to coarse; some gravel, fine, angular to subangular; trace clay; well graded, non-plastic, brown, dense, massive, wet.		Fine to Coarse Grained	Angular; Sub-Angular; Sed. Graded Bedding	
3.68	3.95	Gravel Cobbles; much gravel, angular to subrounded; suspected washed by drilling.		Pebble Sized	Angular; Sub-Rounded	
3.95	4.17	Sand Sand and silt. Sand: fine to coarse. Silt: trace gravel, fine, angular to subangular; well graded, non-plastic, brown, dense to very dense, massive, wet.	Brown	Fine to Coarse Grained	Angular; Sub-Angular; Sed. Graded Bedding	
4.17	5.18	Boulder Boulder. Suspected washed by drilling.		Boulder Sized		
5.18	6.21	Sand Silt and sand. Fine to coarse; some cobbles; trace gravel, fine, angular to subangular; well graded, non-plastic, brown, dense to very dense, massive, wet.	Brown	Fine to Coarse Grained	Angular; Sub-Angular; Sed. Graded Bedding	
6.21	8.54	Gravel Cobbles with some gravel, fine to coarse, angular to subrounded; suspected washed by drilling.		Fine to Coarse Grained	Angular; Sub-Rounded	

Hole Number: **WJ-MW11-01**

Units: Metric

Lithology

From	To	Lithology	Lithology Details			
			Colour	Grain Size	Texture	Mineralogy
8.54	8.92	Silt Silt with some sand, fine to coarse; trace gravel, fine, angular to subrounded; well graded, non-plastic, light grey, very dense, massive, moist.	Light Grey	Fine to Coarse Grained	Angular; Sub-Rounded; Sed. Graded Bedding	
8.92	10.12	Unknown No recovery. Suspected washed away by drilling.				
10.12	10.65	Silt Silt and sand. Fine to coarse; trace gravel, fine, subangular; well graded, non-plastic, light grey/brown, dense, massive, moist.	Light Grey; Brown	Fine to Coarse Grained	Sub-Angular; Sed. Graded Bedding	
10.65	13.13	Boulder Boulders with much gravel, fine to coarse, angular to rounded; some cobbles; suspected washed by drilling.		Boulder Sized		
13.13	13.86	Unknown No recovery. Suspected washed away by drilling.				
13.86	14.06	Sand Sand. Fine; trace silt; light grey.	Light Grey	Fine Grained		
14.06	14.86	Unknown No recovery. Suspected washed away by drilling and advanced casing.				
14.86	15.40	Sand Sand and gravel. Fine to coarse; and gravel; fine, angular to rounded; grey.	Grey	Fine to Coarse Grained	Angular; Rounded	
15.40	16.19	Unknown No recovery. Suspected washed away by drilling.				

Project: EAGLE'S NEST PROJECT

Drillhole No.: WJ-MW11-01

Page: 1 of 3

Contractor: Determination Drilling

Drill Type: CME55

Date Started: Sep 20, 11

Location: Webeque Junction

Total Depth: 16.19 m

Date Completed: Sep 24, 11

Coordinates: 5,844,105 N, 464,706 E

Elevation: 240 m

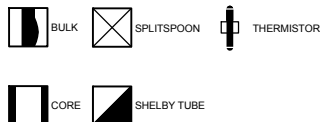
Logged by: RSM

Inclination: -90

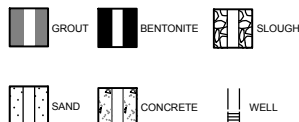
Reviewed by: CLS

DEPTH - (m)	ELEVATION - (m)	GRAPHIC LOG	MATERIAL DESCRIPTION	ROCK		SAMPLED CORE	RECOVERY (%)	RECOVERED SAMPLE TYPE	LABORATORY TESTS	UCS RATING	NoD	ROD (%)	RMR	KEY ROCK MASS CHARACTERISTICS			INSTRUMENTATION / WELL DEPTHS (m)	INSTRUMENTATION / WELL DETAILS
				SOIL	SAMPLE / RUN No.									RECOVERY	RECOVERY	RECOVERY		
			PEAT (0 to 0.3) PEAT.															
			COBBLES (0.3 to 1.22) COBBLES, subangular; black/white/pink, suspected washed by drilling. Cobbles are suspected composed of mica/quartz/feldspar/biotite.		1		29										0.3	
	239		CLAY (1.22 to 2) CLAY; trace sand, fine; medium plasticity, light brown, firm to stiff, moist.		SPT-1		67					7/2/3/5	5	X				
	238		SILT (2 to 2.82) Sandy SILT, fine to coarse; some gravel, fine, angular to subangular; some clay; well graded, medium plasticity, brown, dense, massive, wet.		SPT-2		55					6/3/16/52	19	X				
			COBBLES (2.82 to 3.25) COBBLES, subangular; black/white/pink, suspected washed by drilling. Cobbles are suspected composed of mica/quartz/feldspar/biotite.		2		70											
	237		SAND (3.25 to 3.62) Silty SAND, fine to coarse; some gravel, fine, angular to subangular; trace clay; well graded, non-plastic, brown, dense, massive, wet.		SPT-3		68					16/38/R/-	R			3.46		
			COBBLES MUCH GRAVEL (3.62 to 3.95) COBBLES; MUCH GRAVEL, angular to subrounded; suspected washed by drilling.		3		67											
	236		SAND AND SILT (3.95 to 4.17) SAND, fine to coarse; AND SILT; trace gravel, fine, angular to subangular; well graded, non-plastic, brown, dense to very dense, massive, wet.		SPT-4		100					29/R/-/-	R					
			COBBLES MUCH GRAVEL (3.62 to 3.95) COBBLES; MUCH GRAVEL, angular to subrounded; suspected washed by drilling.		4		65											
	235		SAND AND SILT (3.95 to 4.17) SAND, fine to coarse; AND SILT; trace gravel, fine, angular to subangular; well graded, non-plastic, brown, dense to very dense, massive, wet.		5		47											
			BOULDER (4.17 to 5.18) BOULDER, suspected washed by drilling.		SPT-5		80					50/R/-/-	R					
					SPT-6		100					79/-/-/-	R					
					6		100											
					BU-1													

SAMPLE SYMBOLS:



WELL SYMBOLS:



**NORONT RESOURCES LTD.
EAGLE'S NEST PROJECT**



Project No. NB102-390/1 Ref. No. 10 Rev. 0

FIGURE A.1

I:\1102100390\01\DATA\WORK FILES\WF3 - GINT LOGS FOR WEBEQUE JUNCTION\2011 MW AT WJ GINT.GPJ
I:\0\GINT\LIBRARY\EAGLE'S NEST\TEMP\KP LIB.GLB, DRILLHOLE LOG, KP DATA TEMPLATE.GDT, 06-Jan-12

Project: EAGLE'S NEST PROJECT

Drillhole No.: WJ-MW11-01

Page: 2 of 3

Contractor: Determination Drilling

Drill Type: CME55

Date Started: Sep 20, 11

Location: Webequie Junction

Total Depth: 16.19 m

Date Completed: Sep 24, 11

Coordinates: 5,844,105 N , 464,706 E

Elevation: 240 m

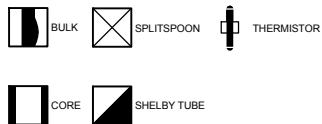
Logged by: RSM

Inclination: -90

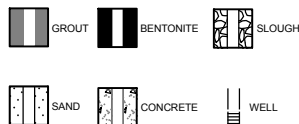
Reviewed by: CLS

DEPTH - (m)	ELEVATION - (m)	GRAPHIC LOG	MATERIAL DESCRIPTION	ROCK		RECOVERY (%)	RECOVERED SAMPLE TYPE	LABORATORY TESTS	UCS RATING	NoD	RQD (%)	RMR	KEY ROCK MASS CHARACTERISTICS			INSTRUMENTATION / WELL DEPTHS (m)	INSTRUMENTATION / WELL DETAILS	
				SOIL	SAMPLE / RUN No.								PL	MC	LL (%)			
													SPT TEST 'N' VALUES - X					
7.0	233		SILT AND SAND (5.18 to 6.21) SILT; AND SAND, fine to coarse; some cobbles; trace gravel, fine, angular to subangular; well graded, non-plastic, brown, dense to very dense, massive, wet. COBBLE (6.21 to 8.54) COBBLES; some gravel, fine to coarse, angular to subrounded; suspected washed by drilling.	SPT-7	7	100	X				53/RJ/-	R	20	40	60	80	6.5	
				SPT-3b		24											7.14	
				SPT-4b		0	X				30/RJ/-	R						
					11b	43												
				SPT-5b		74	X				28/34/RJ/-	R						
			SILT (8.54 to 8.92) SILT; some sand, fine to coarse; trace gravel, fine, angular to subrounded; well graded, non-plastic, light grey, very dense, massive, moist. NO RECOVERY (8.92 to 10.12) NO RECOVERY, suspected washed away by drilling.		12b	0												
			SILT AND SAND (10.12 to 10.65) SILT; AND SAND, fine to coarse; trace gravel, fine, subangular; well graded, non-plastic, light grey/brown, dense, massive, moist. BOULDER MUCH GRAVEL (10.65 to 13.13) BOULDER; MUCH GRAVEL, fine to coarse, angular to rounded; some cobbles; suspected washed by drilling.	SPT-6b		44	X				4/16/22/R	38						
					13b	33												

SAMPLE SYMBOLS:



WELL SYMBOLS:



**NORONT RESOURCES LTD.
EAGLE'S NEST PROJECT**



Project No. NB102-390/1	Ref. No. 10	Rev. 0
----------------------------	----------------	-----------

FIGURE A.1

I:\1102100390\01\DATA\WORK FILES\WF3 - GINT LOGS FOR WEBEQUIE JUNCTION\2011 MW AT WJ GINT.GPJ
I:\GINT\LIBRARY\EAGLE'S NEST TEMP\KP LIB.GLB, DRILLHOLE LOG, KP DATA TEMPLATE.GDT, 06-Jan-12

Project: EAGLE'S NEST PROJECT

Drillhole No.: WJ-MW11-01

Page: 3 of 3

Contractor: Determination Drilling

Drill Type: CME55

Date Started: Sep 20, 11

Location: Webequie Junction

Total Depth: 16.19 m

Date Completed: Sep 24, 11

Coordinates: 5,844,105 N, 464,706 E

Elevation: 240 m

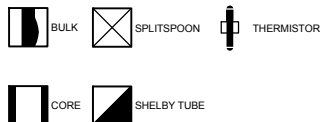
Logged by: RSM

Inclination: -90

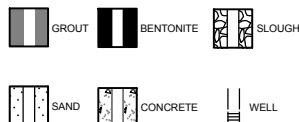
Reviewed by: CLS

DEPTH - (m)	ELEVATION - (m)	GRAPHIC LOG	MATERIAL DESCRIPTION	ROCK		SAMPLED CORE	RECOVERY (%)	RECOVERED SAMPLE TYPE	LABORATORY TESTS	UCS RATING	NoD	RQD (%)	RMR	KEY ROCK MASS CHARACTERISTICS			INSTRUMENTATION / WELL DEPTHS (m)	INSTRUMENTATION / WELL DETAILS	
				SOIL	SAMPLE / RUN No.									RECOVERY (%)	SPT TEST 'N' VALUES - X	PL			MC
13.0	227		BOULDER MUCH GRAVEL (10.65 to 13.13) BOULDER; MUCH GRAVEL, fine to coarse, angular to rounded; some cobbles; suspected washed by drilling.		14b		48												
13.0	227		NO RECOVERY (13.13 to 13.86) NO RECOVERY, suspected washed away by drilling.		15b		0												
14.0	226		SAND (13.86 to 14.06) SAND, fine; trace silt; light grey.		SPT-7b		100	X				55/R/-	R						
14.0	226		NO RECOVERY (14.06 to 14.8) NO RECOVERY, suspected washed away by drilling and advanced casing.		16b		0												
15.0	225		SAND AND GRAVEL (14.8 to 15.4) SAND, fine to coarse; AND GRAVEL, fine, angular to rounded; grey.		SPT-8		38	X				25/82/29/26	111						
15.0	225		NO RECOVERY (15.4 to 16.19) NO RECOVERY, suspected washed away by drilling.		17b		0												
16.0	224		End of Drillhole: 16.19 m																
17.0	223		Notes: 1. HW coring advanced to 16.19 m. 2. Two monitoring wells installed at site. WJ-MW11-01S (shallow well) installed approximately 1 m to the west of WJ-MW11-01D (deep well). 3. Coordinates of monitoring wells taken from handheld GPS unit. Accuracy of coordinates +/-5 m. 4. Run and Standard Penetration Tests completed during drilling of the deep well (W-MW11-01D) are noted with a 'b' in the name (e.g. SPT-3b)																

SAMPLE SYMBOLS:



WELL SYMBOLS:



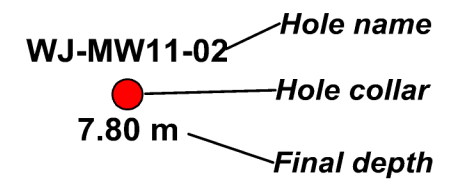
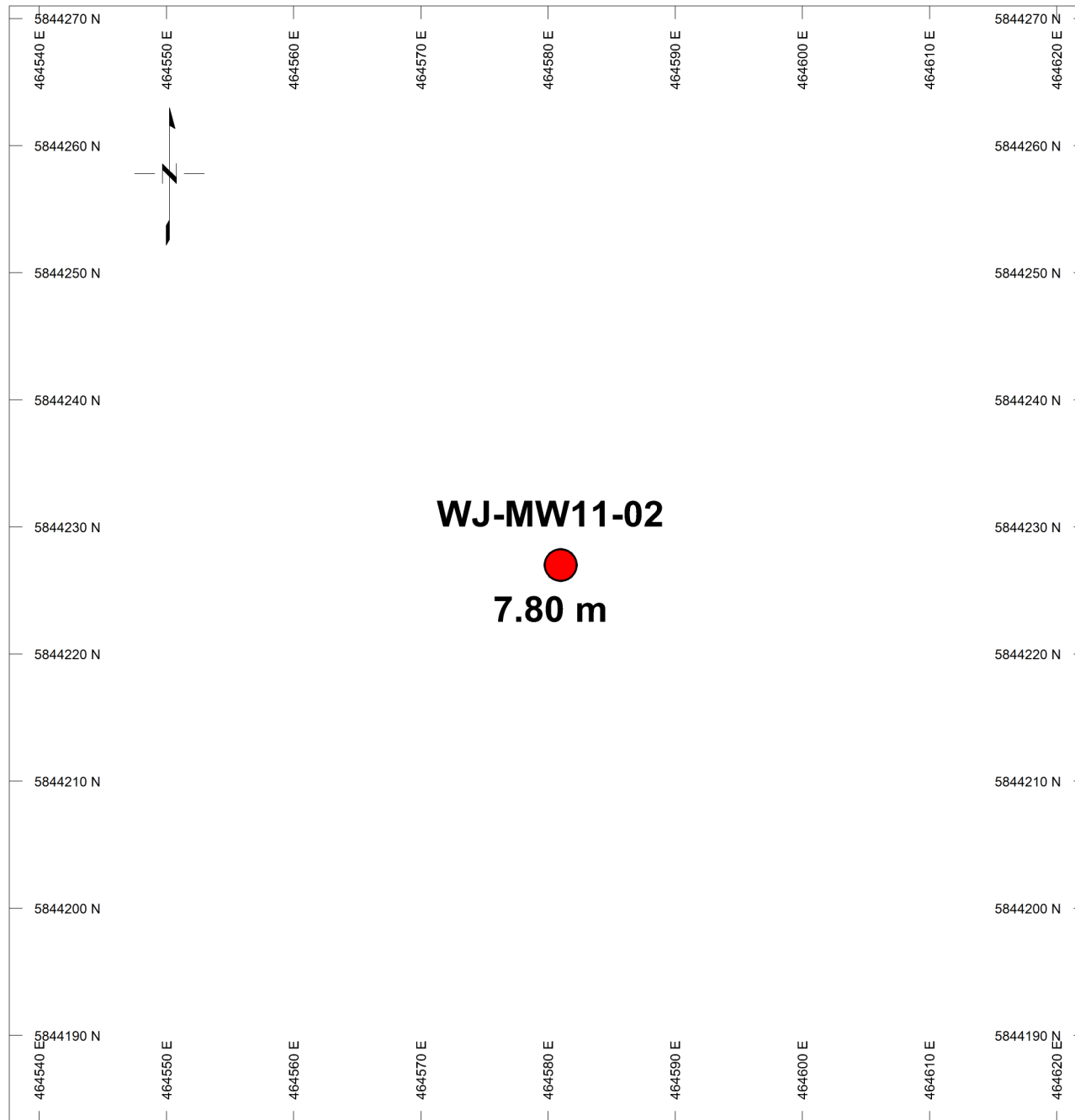
**NORONT RESOURCES LTD.
EAGLE'S NEST PROJECT**

**Knight Piésold
CONSULTING**

Project No. NB102-390/1	Ref. No. 10	Rev. 0
----------------------------	----------------	-----------

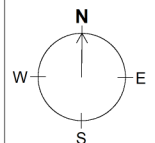
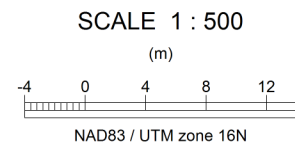
FIGURE A.1

I:\110200390\01\DATA\WORK FILES\WF3 - GINT LOGS FOR WEBEQUIE JUNCTION\2011 MW AT WJ GINT.GPJ
I:\GINT\LIBRARY\EAGLE'S NEST TEMP\KP LIB\LB, DRILLHOLE LOG, KP DATA TEMPLATE.GDT, 06-Jan-12

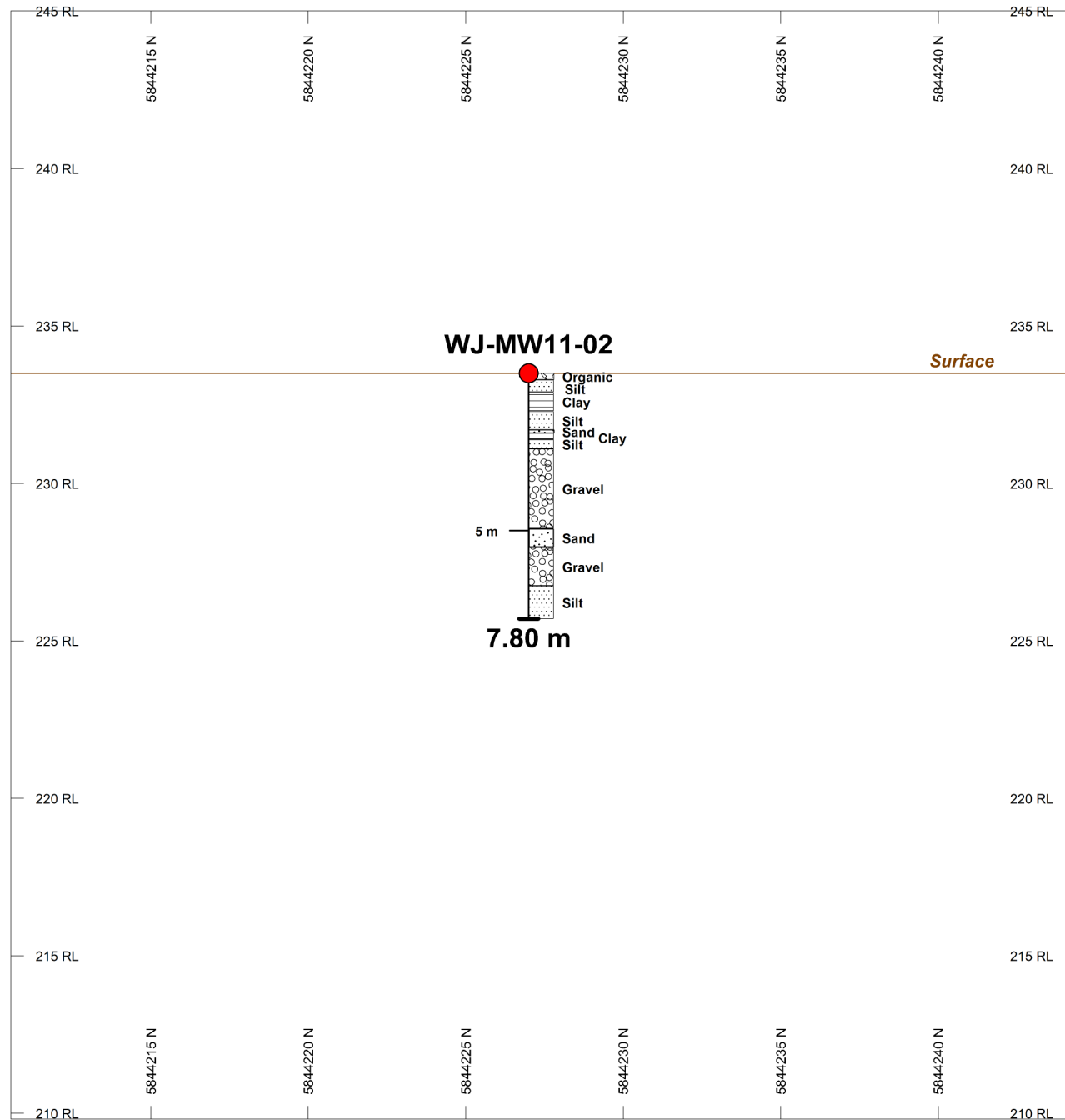


PLAN SPECS:

REF. PT. E, N	464600 m	5844000 m
EXTENTS	84.7 m	87.95 m



Noront Resources Ltd.
Webequie Junction
2011 Drill Program
WJ-MW11-02 Plan View



ROCK CODES

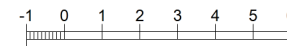
Pattern	Rock Type
	Clay
	Gravel
	Organic
	Sand
	Silt

SECTION SPECS:

REF. PT. E, N	464581 m	5844228 m
EXTENTS	33.88 m	35.18 m
SECTION TOP, BOT	245 m	209.8 m
TOLERANCE +/-	25 m	

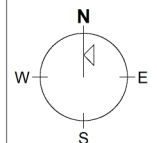
SCALE 1 : 200

(m)



NAD83 / UTM zone 16N

AZIMUTH = 0°



Noront Resources Ltd.

Webequie Junction

2011 Drill Program

WJ-MW11-02 Section View

Hole Number: **WJ-MW11-02**

Units: Metric

Project Number:	Webequie Junction	Coordinates Grid:	UTM83-16		
Project Name:	Webequie Junction	Coordinate Type Code:	Handheld GPS		
Planned Hole #:		Easting (m):	464581	Collar Azimuth:	0
Date Started:	Sep 27, 2011	Northing (m):	5844227	Collar Dip:	-90
Date Completed:	Sep 28, 2011	Elevation (m):	233.5	Final Depth (m):	7.80
Logged By:	Bronwyn Azar, Noront				
Overburden Logged By:	Reagan McIsaac, Knight Piésold				
Collar Survey:	No	Hole Size:	HQ	Contractor:	Determination Drilling
Multishot Survey:	No	Core Stored:	No	Core Stored At:	Esker Camp
Pulse EM Survey:	No	Hole Cemented:	No	Workplace:	Webequie Junction & Esker Camp
Is Hole Plugged:	No				
Hole Purpose:	Hole was drilled to: 1) test the geology and mineral potential in this previously unknown area; 2) test geophysical anomalies in the area; 3) 'condemn' the ground - i.e. to determine whether or not there are any mineral (and thus drill) targets in this area after having learned a little about the geology of the area; 4) test the overburden in this area to see if there are any boulders of favourable host rock (e.g. peridotite or nickel-bearing pebbles, cobbles, boulders); 5) test the overburden as a potential aggregate source; 6) reach any bedrock in the area via one or more of the holes drilled here (to test the depth to bedrock and type and condition of bedrock).				
Hole Results:	Hole did not encounter bedrock but did encounter cobbles and pebbles of granite-granodiorite (not favourable for mineralization but might be good for aggregate source). The overburden was poorly to well sorted & graded, and contained a few intervals of clay and washed out intervals (not good for aggregate source). The silts and sands were loose to very dense and recovery was from 0 to 100%. The hole was rather heterogeneous and largely contained layers of silt and sand of varying thickness but did contain a couple of longer intervals of gravel. The bedrock beneath (which was not encountered) was granite-granodiorite however, which may provide for an aggregate source.				
Comments:	A groundwater monitoring well was also installed here for environmental baseline studies.				

Hole Number: **WJ-MW11-02**

Units: Metric

Lithology

From	To	Lithology	Lithology Details			
			Colour	Grain Size	Texture	Mineralogy
0.00	0.20	Organic Material Peat.				
0.20	0.60	Silt Silt. Trace sand, fine; trace gravel, fine, angular to subrounded; poorly graded, non-plastic, brown/grey, stiff, massive, dry.	Brown	Fine Grained	Angular; Sub-Rounded	
0.60	1.20	Clay Clay. Trace silt; trace sand; high plasticity, brown, stiff, massive, saturated.	Brown		Massive	
1.20	1.80	Silt Silt and sand. Fine to coarse; trace gravel, fine to coarse, subangular to rounded; trace clay; well graded, non-plastic, brown/grey.	Brown; Grey	Fine to Coarse Grained	Sub-Angular; Rounded; Sed. Graded Bedding	
1.80	1.90	Sand Sand. Fine to coarse; some silt; trace clay; well graded, non-plastic, grey/brown, loose, saturated.	Grey; Brown	Fine to Coarse Grained	Sed. Graded Bedding	
1.90	2.10	Clay Clay. Trace silt; trace sand; high plasticity, brown, soft, saturated.	Brown	Clay		
2.10	2.40	Silt Silt with some sand, fine to coarse; some gravel, fine to coarse, subangular to subrounded; non-plastic, grey/brown, stiff, saturated.	Grey	Fine to Coarse Grained	Sub-Angular; Sub-Rounded	
2.40	4.93	Gravel Cobbles with much gravel, suspected washed by drilling.		Pebble Sized		
4.93	5.53	Sand Sand. Silty sand, fine; some gravel, fine, subangular to subrounded; trace clay; well graded, non-plastic, grey, dense, moist.	Grey	Fine Grained	Sub-Angular; Sub-Rounded	
5.53	6.75	Gravel Cobbles with much gravel, suspected washed by drilling.		Pebble Sized		
6.75	7.80	Silt Silt. Some sand, fine to coarse; some gravel, fine to coarse, subangular to subrounded; well graded, non-plastic, light grey/brown, stiff, massive, wet.	Grey; Brown	Fine to Coarse Grained	Sub-Angular; Sub-Rounded	

Project: EAGLE'S NEST PROJECT

Drillhole No.: WJ-MW11-02

Page: 1 of 2

Contractor: Determination Drilling

Drill Type: CME55

Date Started: Sep 27, 11

Location: Webeque Junction

Total Depth: 7.80 m

Date Completed: Sep 28, 11

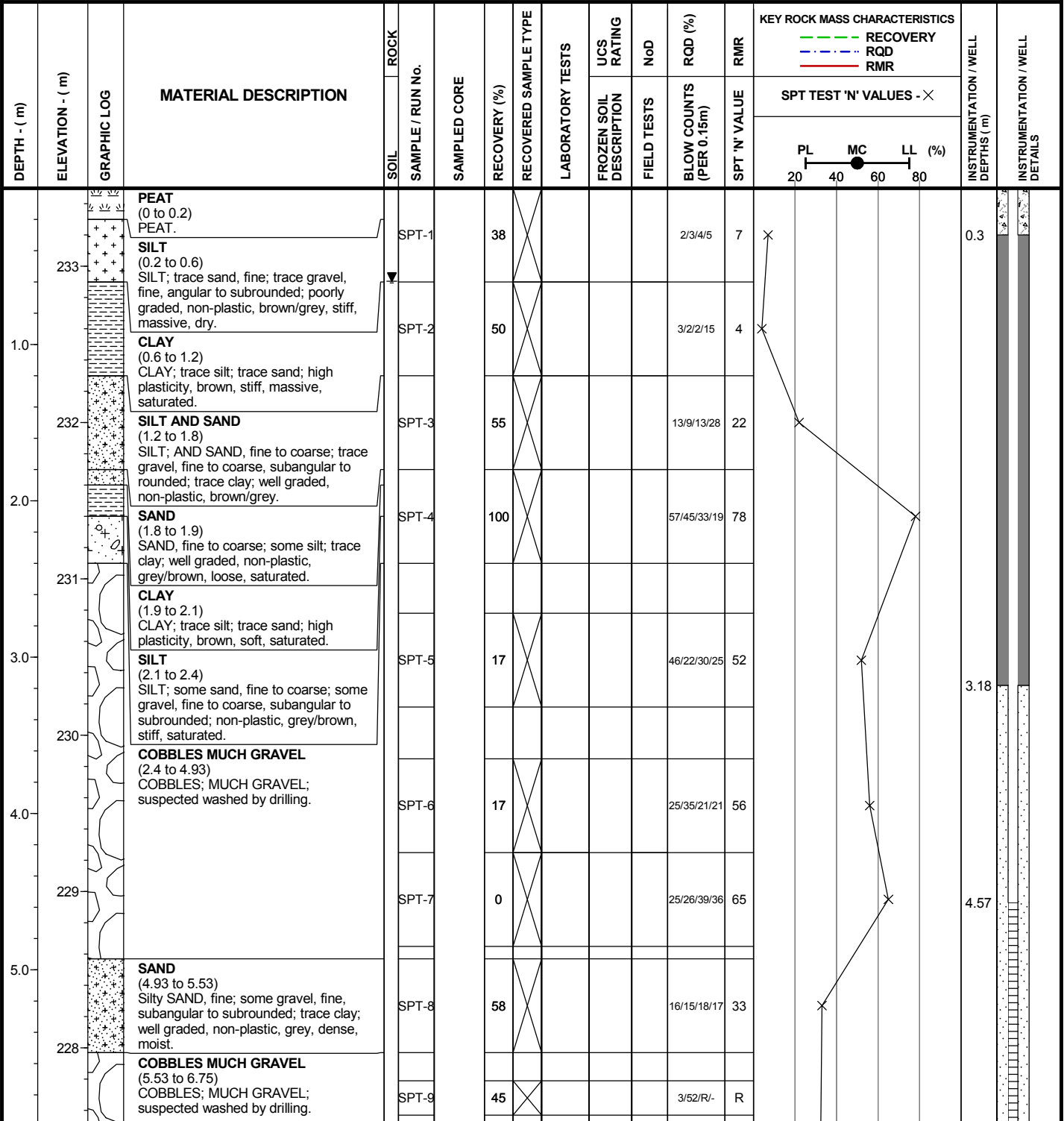
Coordinates: 5,844,227 N, 464,581 E

Elevation: 234 m

Logged by: RSM

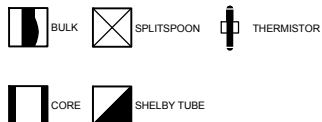
Inclination: -90

Reviewed by: CLS

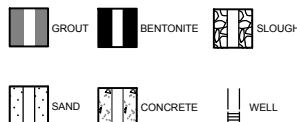


I:\1102003901\1\DATA\WORKFILES\WF3 - GINT LOGS FOR WEBEQUE JUNCTION\2011 MW AT WJ GINT.GPJ
 I:\GINT\LIBRARY\EAGLE'S NEST\TEMP\KP LIB.GLB, DRILLHOLE LOG, KP DATA TEMPLATE.GDT, 06-Jan-12

SAMPLE SYMBOLS:



WELL SYMBOLS:



**NORONT RESOURCES LTD.
EAGLE'S NEST PROJECT**



Project No. NB102-390/1	Ref. No. 10	Rev. 0
----------------------------	----------------	-----------

FIGURE A.2

Project: EAGLE'S NEST PROJECT

Drillhole No.: WJ-MW11-02

Page: 2 of 2

Contractor: Determination Drilling

Drill Type: CME55

Date Started: Sep 27, 11

Location: Webequie Junction

Total Depth: 7.80 m

Date Completed: Sep 28, 11

Coordinates: 5,844,227 N, 464,581 E

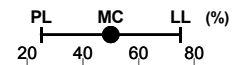
Elevation: 234 m

Logged by: RSM

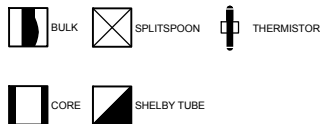
Inclination: -90

Reviewed by: CLS

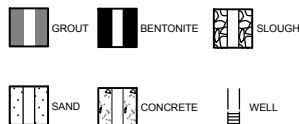
DEPTH - (m)	ELEVATION - (m)	GRAPHIC LOG	MATERIAL DESCRIPTION	ROCK		SAMPLED CORE	RECOVERY (%)	RECOVERED SAMPLE TYPE	LABORATORY TESTS	UCS RATING	NoD	RQD (%)	RMR	KEY ROCK MASS CHARACTERISTICS			INSTRUMENTATION / WELL DEPTHS (m)	INSTRUMENTATION / WELL DETAILS
				SOIL	SAMPLE / RUN No.									RECOVERY	RECOVERY	RECOVERY		
227			COBBLES MUCH GRAVEL (5.53 to 6.75) COBBLES; MUCH GRAVEL; suspected washed by drilling.				0					22/17/15/18	32					
7.0			SILT (6.75 to 7.8) SILT; some sand, fine to coarse; some gravel, fine to coarse, subangular to subrounded; well graded, non-plastic, light grey/brown, stiff, massive, wet.				67					13/14/16/19	30					
226							22					21/46/52/R	98					
8.0			End of Drillhole: 7.8 m Notes: 1. HW coring advanced to 7.8 m. 2. One monitoring well installed at site. 3. Coordinates of monitoring wells taken from handheld GPS unit. Accuracy of coordinates +/-5 m.															
225																		
224																		
223																		
222																		



SAMPLE SYMBOLS:



WELL SYMBOLS:



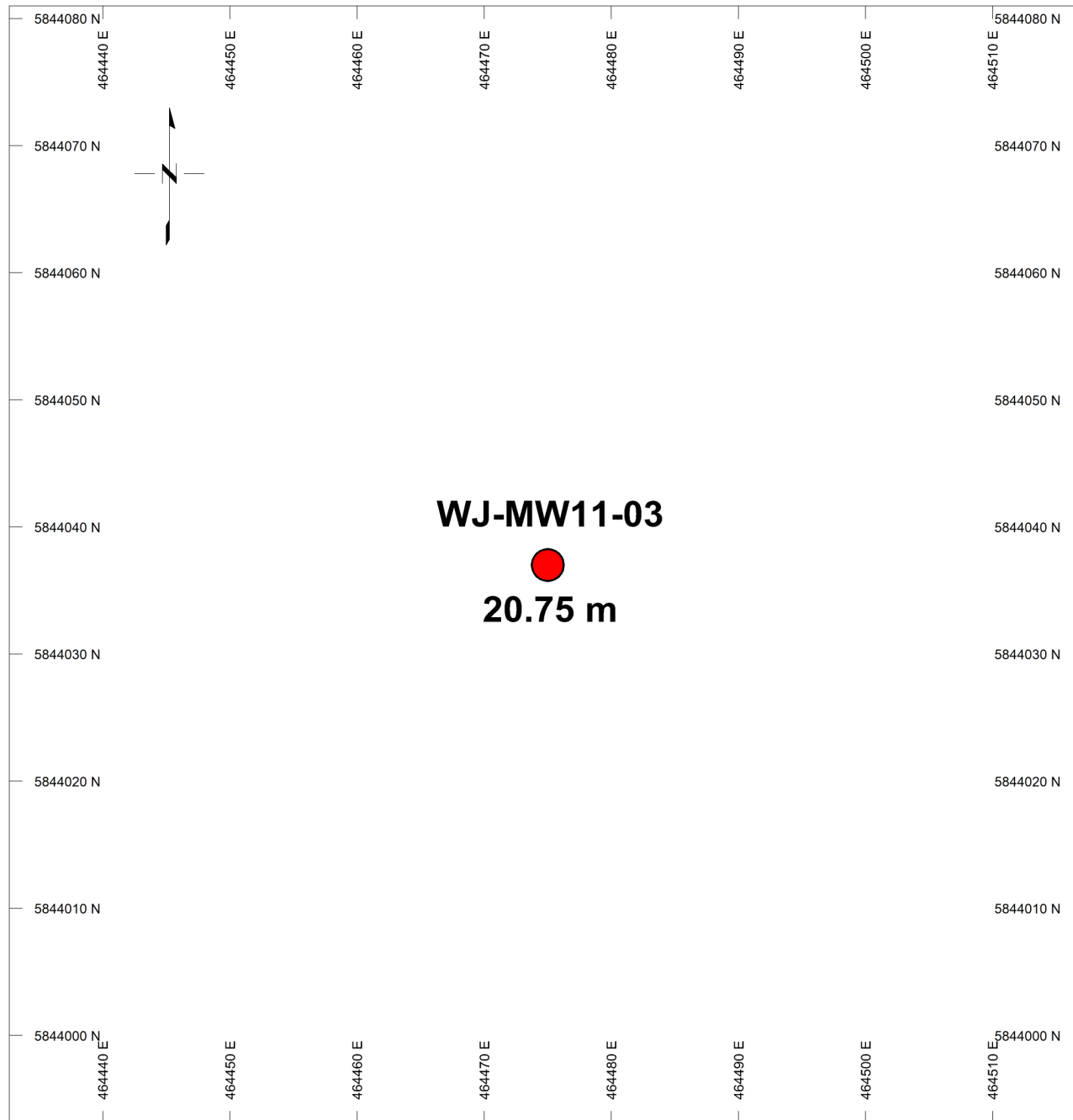
**NORONT RESOURCES LTD.
EAGLE'S NEST PROJECT**




Project No. NB102-390/1	Ref. No. 10	Rev. 0
----------------------------	----------------	-----------

FIGURE A.2

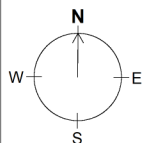
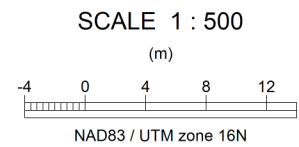
I:\110200390\01\A\DATA\WORK FILES\WF3 - GINT LOGS FOR WEBEQUIE JUNCTION\2011 MW AT WJ GINT.GPJ
I:\0\GINT\LIBRARY\EAGLE'S NEST TEMP\KP LIB.GLB, DRILLHOLE LOG, KP DATA TEMPLATE.GDT, 06-Jan-12



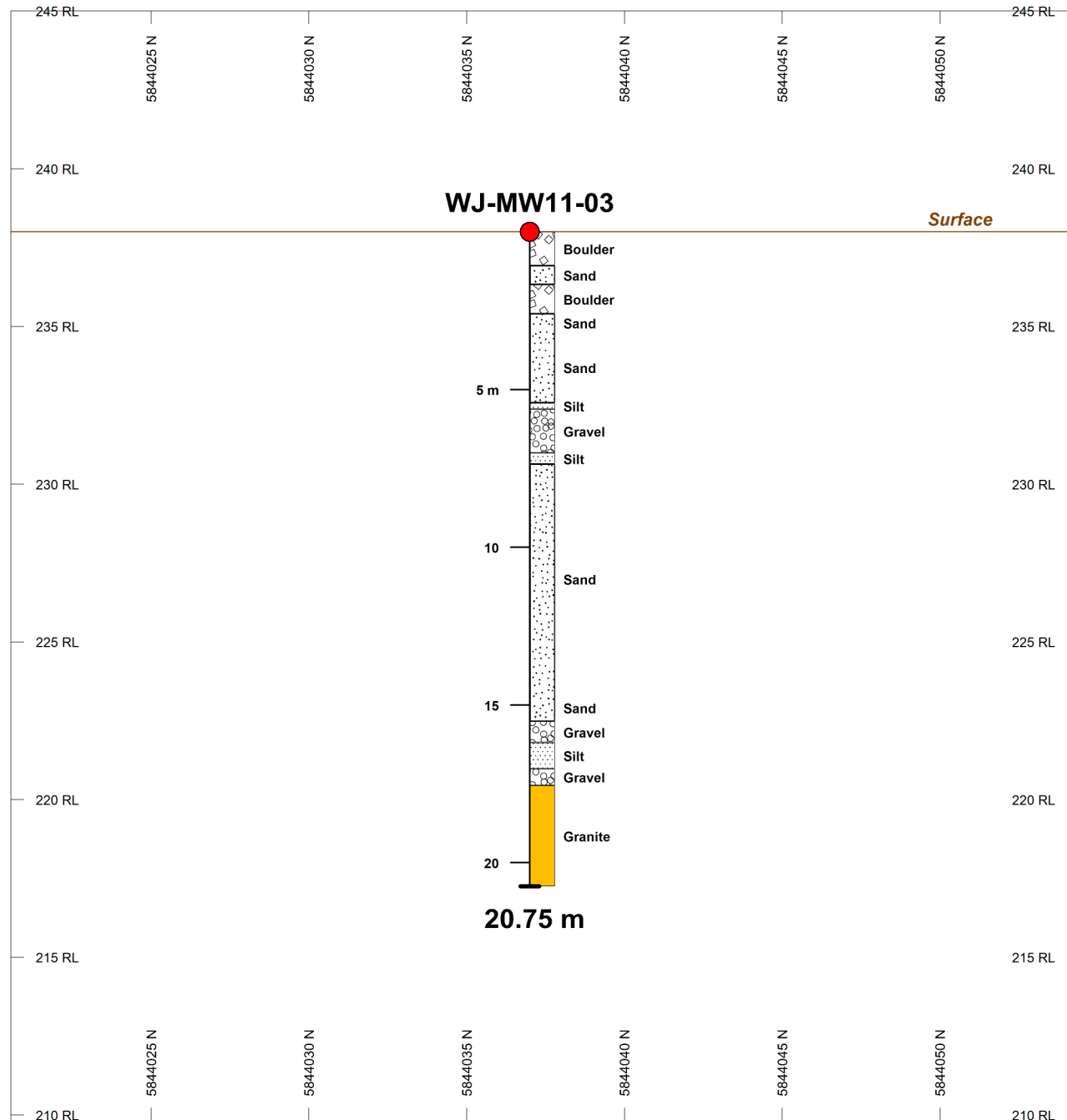
WJ-MW11-03 *Hole name*
 *Hole collar*
20.75 m *Final depth*

PLAN SPECS:

REF. PT. E, N	464500 m	5844000 m
EXTENTS	84.7 m	87.95 m



Noront Resources Ltd.
Webequie Junction
2011 Drill Program
WJ-MW11-03 Plan View

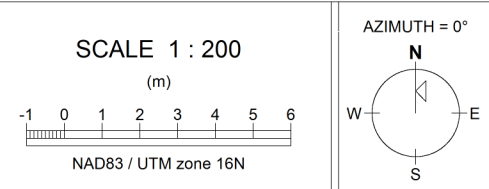


ROCK CODES

Pattern	Rock Type
	Boulder
	Granite
	Gravel
	Sand
	Silt

SECTION SPECS:

REF. PT. E, N	464475 m	5844038 m
EXTENTS	33.88 m	35.18 m
SECTION TOP, BOT	245 m	209.8 m
TOLERANCE +/-	25 m	



Noront Resources Ltd.
Webequie Junction
2011 Drill Program
WJ-MW11-03 Section View



Hole Number: **WJ-MW11-03**

Units: Metric

Project Number:	Webequie Junction	Coordinates Grid:	UTM83-16		
Project Name:	Webequie Junction	Coordinate Type Code:	Handheld GPS		
Planned Hole #:		Easting (m):	464475	Collar Azimuth:	0
Date Started:	Oct 08, 2011	Northing (m):	5844037	Collar Dip:	-90
Date Completed:	Oct 17, 2011	Elevation (m):	238	Final Depth (m):	20.75
Logged By:	Bronwyn Azar, Noront				
Overburden Logged By:	Reagan McIsaac, Knight Piésold				
Collar Survey:	No	Hole Size:	HQ	Contractor:	Determination Drilling
Multishot Survey:	No	Core Stored:	Yes	Core Stored At:	Esker Camp
Pulse EM Survey:	No	Hole Cemented:	No	Workplace:	Webequie Junction & Esker Camp
Is Hole Plugged:	No				
Hole Purpose:	Hole was drilled to: 1) test the geology and mineral potential in this previously unknown area; 2) test geophysical anomalies in the area; 3) 'condemn' the ground - i.e. to determine whether or not there are any mineral (and thus drill) targets in this area after having learned a little about the geology of the area; 4) test the overburden in this area to see if there are any boulders of favourable host rock (e.g. peridotite or nickel-bearing pebbles, cobbles, boulders); 5) test the overburden as a potential aggregate source; 6) reach any bedrock in the area via one or more of the holes drilled here (to test the depth to bedrock and type and condition of bedrock).				
Hole Results:	Intersected bedrock, granite, at 17.55m depth. Higher in the hole, cobbles and pebbles of granite-granodiorite were encountered (as has been seen in the other drill holes in this area, which are indicative of the bedrock source). Again, the overburden was poorly to well sorted and graded and contained much clay, silt, and sand of varying density. The hole intersected medium grained pink granite which contained no mineralization of any kind. This granite bedrock is indicative of the fact that there are probably no favourable host rocks in the area for mineralization, however, the bedrock is extremely strong and is largely unweathered/unaltered with few discontinuities, which would provide a very good aggregate source.				
Comments:	There are two boxes of core stored at Esker Camp (boxes #3 and #4), which were kept since they contained bedrock. A groundwater monitoring well was also installed here for environmental baseline studies.				

Lithology

From	To	Lithology	Lithology Details			
			Colour	Grain Size	Texture	Mineralogy
0.00	1.07	Boulder Boulder. Black/white, suspected washed by drilling.	Black-White	Boulder Sized		
1.07	1.67	Sand Silty sand, fine to coarse; some gravel, fine, subangular to subrounded; trace clay; well graded, non-plastic, light grey/brown, compact, massive, moist.	Light Grey; Brown	Fine to Coarse Grained		
1.67	2.59	Boulder Boulders. Much gravel, coarse, subangular to subrounded; suspected washed by drilling.	Black-White	Boulder Sized		
2.59	3.19	Sand Silty sand. Fine to coarse; some gravel, fine, subangular to subrounded; trace clay, well graded, non-plastic, light grey/brown, very dense, massive, moist.	Light Grey; Light Brown	Fine to Coarse Grained	Sub-Rounded; Sed. Graded Bedding; Sub-Angular	
3.19	5.42	Sand Silty sand. Fine to coarse; some cobbles; some gravel, fine, subangular to subrounded; trace clay; well graded, non-plastic, light grey/brown, very dense, massive, moist. Suspected partially washed by drilling.	Light Grey; Light Brown	Fine to Coarse Grained	Sub-Rounded; Sed. Graded Bedding; Massive	
5.42	5.62	Silt Gravelly, fine to coarse, subangular to subrounded; Silt; some sand, fine to coarse; well graded, non-plastic, lightgrey/brown, very dense, massive, moist.	Light Grey; Light Brown	Fine to Coarse Grained	Sub-Rounded; Sed. Graded Bedding; Sub-Angular	
5.62	7.01	Gravel Cobbles with much gravel. Fine to coarse, subangular to subrounded; some silt; some sand, fine to coarse; well graded, non-plastic, pink/black/white/light grey/brown, massive, moist. Suspected partially washed by drilling.	Black-White-Pink; Light Grey	Coarse Grained	Sub-Rounded; Sub-Angular; Sed. Graded Bedding	
7.01	7.36	Silt Gravelly, fine to coarse, subangular to subrounded; Silt; some sand, fine to coarse; well graded, non-plastic, light grey/brown, very dense, massive, moist.	Light Grey; Light Brown	Fine to Coarse Grained	Sub-Angular; Sub-Rounded; Sed. Graded Bedding	
7.36	14.65	Sand Silty sand. Fine to coarse; some cobbles; some gravel, fine, subangular to subrounded; trace clay; well graded, non-plastic, light grey/brown, very dense, massive, moist. Suspected partially washed by drilling.	Light Grey; Light Brown	Fine to Coarse Grained	Sub-Rounded; Sub-Angular; Sed. Graded Bedding	
14.65	15.52	Sand Silty sand. Fine to coarse; some gravel, fine, subangular to subrounded; trace clay; well graded, non-plastic, light grey/brown, very dense, massive, moist.	Light Grey; Light Brown	Fine to Coarse Grained	Sub-Angular; Sub-Rounded; Sed. Graded Bedding	

Lithology

From	To	Lithology	Lithology Details			
			Colour	Grain Size	Texture	Mineralogy
15.52	16.19	Gravel Gravel. Fine to coarse, subangular to subrounded; with silt; well graded, non-plastic, light brown/grey. Suspected partially washed by drilling. The cobbles, and gravel, are granite, limestone and fine grained grey rocks.	Light Grey; Light Brown	Fine to Coarse Grained	Sub-Angular; Sub-Rounded; Sed. Graded Bedding	
16.19	17.02	Silt Silty sand. Fine to coarse; some gravel, fine, subangular to subrounded; trace clay; well graded, non-plastic, light grey/brown, very dense, massive, moist.	Light Brown; Light Grey	Fine to Coarse Grained	Sub-Angular; Sub-Rounded; Sed. Graded Bedding	
17.02	17.55	Gravel Cobbles; suspected washed by drilling. The cobbles are fine grained grey and more rarely beige limestone and granite.	Light Grey; Black-White-Pink	Very Coarse Grained	Poorly-Sorted	
17.55	20.75	Granite Pink to grey medium grained granite composed of 60% medium grained white to pink subhedral feldspar, 20% fine grained black biotite, and 20% medium grained anhedral grey quartz. The rock is relatively competent, hard and weakly magnetic implying 1-2% magnetite. There are small 2-10cm pegamitic and coarser grained dykes/intervals throughout the unit, although generally concentrated at the top of the interval. There is a poorly developed foliation at 45 dtca.	Black-White-Pink <i>Special details: Contact with the bedrock and overburden above is not measurable; the granite is weakly magnetic, and unit is moderately altered</i>	Medium Grained	Massive; Inequigranular; Hypidiomorphic	Feldspar, Quartz, Biotite

Project: EAGLE'S NEST PROJECT

Drillhole No.: WJ-MW11-03

Page: 1 of 4

Contractor: Determination Drilling

Drill Type: CME55

Date Started: Oct 8, 11

Location: Webeque Junction

Total Depth: 20.75 m

Date Completed: Oct 17, 11

Coordinates: 5,844,037 N, 464,475 E

Elevation: 238 m

Logged by: RSM

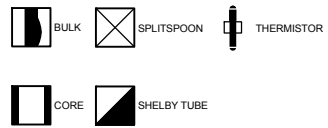
Inclination: -90

Reviewed by: CLS

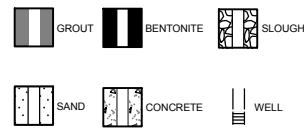
DEPTH - (m)	ELEVATION - (m)	GRAPHIC LOG	MATERIAL DESCRIPTION	ROCK		SAMPLED CORE	RECOVERY (%)	RECOVERED SAMPLE TYPE	LABORATORY TESTS	UCS RATING	NoD	RQD (%)	RMR	KEY ROCK MASS CHARACTERISTICS			INSTRUMENTATION / WELL DEPTHS (m)	INSTRUMENTATION / WELL DETAILS
				SOIL	SAMPLE / RUN No.									RECOVERY	RECOVERY	RECOVERY		
														PL MC LL (%) 20 40 60 80				
			BOULDER (0 to 1.07) BOULDER; black/white, suspected washed by drilling.			1	44										0.3	
1.0	237		SAND (1.07 to 1.67) Silty SAND, fine to coarse; some gravel, fine, subangular to subrounded; trace clay; well graded, non-plastic, light grey/brown, compact, massive, moist.			SPT-1	50					5/9/13/14	22					
2.0	236		BOULDERS MUCH GRAVEL (1.67 to 2.59) BOULDERS; MUCH GRAVEL, coarse, subangular to subrounded; suspected washed by drilling.			2	40											
						3	100											
						4	68											
3.0	235		SAND (2.59 to 3.19) Silty SAND, fine to coarse; some gravel, fine, subangular to subrounded; trace clay, well graded, non-plastic, light grey/brown, very dense, massive, moist.			SPT-2	57					30/79/78/99	157				157	
4.0	234		SAND (3.19 to 5.42) Silty SAND, fine to coarse; some cobbles; some gravel, fine, subangular to subrounded; trace clay; well graded, non-plastic, light grey/brown, very dense, massive, moist. Suspected partially washed by drilling.			5	67											
						SPT-3	69					46/R/-	R					
5.0	233					6	46											
						SPT-4	95					R/-/-	R					
						7	50					22/R/-	R					
			SILT (5.42 to 5.62) Gravelly, fine to coarse, subangular to subrounded; SILT; some sand, fine to coarse; well graded, non-plastic, light grey/brown, very dense, massive			SPT-5	50										5.6	
							55											

I:\11021003901\DATA\WORK FILES\WF3 - GINT LOGS FOR WEBEQUE JUNCTION\2011 MW AT WJ GINT.GPJ
I:\0\GINT\LIBRARY\EAGLE'S NEST\TEMP\KP LIB\GLB, DRILLHOLE LOG, KP DATA TEMPLATE.GDT, 06-Jan-12

SAMPLE SYMBOLS:



WELL SYMBOLS:



**NORONT RESOURCES LTD.
EAGLE'S NEST PROJECT**



Project No. NB102-390/1	Ref. No. 10	Rev. 0
----------------------------	----------------	-----------

FIGURE A.3

Project: EAGLE'S NEST PROJECT

Drillhole No.: WJ-MW11-03

Page: 2 of 4

Contractor: Determination Drilling

Drill Type: CME55

Date Started: Oct 8, 11

Location: Webeque Junction

Total Depth: 20.75 m

Date Completed: Oct 17, 11

Coordinates: 5,844,037 N, 464,475 E

Elevation: 238 m

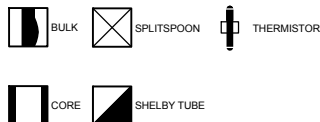
Logged by: RSM

Inclination: -90

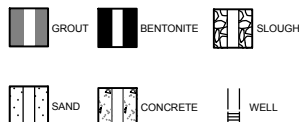
Reviewed by: CLS

DEPTH - (m)	ELEVATION - (m)	GRAPHIC LOG	MATERIAL DESCRIPTION	SOIL SAMPLE / RUN No.	ROCK SAMPLE / RUN No.	SAMPLED CORE	RECOVERY (%)	RECOVERED SAMPLE TYPE	LABORATORY TESTS	UCS RATING	NoD	ROD (%)	RMR	KEY ROCK MASS CHARACTERISTICS			INSTRUMENTATION / WELL DEPTHS (m)	INSTRUMENTATION / WELL DETAILS	
														RECOVERY	RQD	RMR			
														SPT TEST 'N' VALUES - X					
														PL	MC	LL (%)			
														20	40	60	80		
7.0	231		moist. COBBLES MUCH GRAVEL (5.62 to 7.01) COBBLES; MUCH GRAVEL, fine to coarse, subangular to subrounded; some silt; some sand, fine to coarse; well graded, non-plastic, pink/black/white/light grey/brown, massive, moist. Suspected partially washed by drilling.	8			65										6.51		
			SILT (7.01 to 7.36) Gravelly, fine to coarse, subangular to subrounded; SILT; some sand, fine to coarse; well graded, non-plastic, light grey/brown, very dense, massive, moist.	SPT-6			63	X				58/84/R/-	R						
			SAND (7.36 to 14.65) Silty SAND, fine to coarse; some cobbles; some gravel, fine, subangular to subrounded; trace clay; well graded, non-plastic, light grey/brown, very dense, massive, moist. Suspected partially washed by drilling.	9			100												
8.0	230			10			49										8.01		
				SPT-7			90	X				56/R/-/-	R						
9.0	229			11			83										9.05		
				12			46												
10.0	228			SPT-8			67	X				41/92/100/57	192				X192		
				SPT-9			42	X				30/27/40/74	67						
11.0	227			13			50												
				SPT-10			0	X				R/-/-/-	R						
				14			28												

SAMPLE SYMBOLS:



WELL SYMBOLS:



**NORONT RESOURCES LTD.
EAGLE'S NEST PROJECT**



Project No. NB102-390/1	Ref. No. 10	Rev. 0
----------------------------	----------------	-----------

FIGURE A.3

I:\110200390\1\DATA\WORK FILES\WF3 - GINT LOGS FOR WEBEQUE JUNCTION\2011 MW AT WJ GINT.GPJ
I:\GINT\LIBRARY\EAGLE'S NEST TEMP\KP LIB\GLB, DRILLHOLE LOG, KP DATA TEMPLATE.GDT, 06-Jan-12

Project: EAGLE'S NEST PROJECT

Drillhole No.: WJ-MW11-03

Page: 3 of 4

Contractor: Determination Drilling

Drill Type: CME55

Date Started: Oct 8, 11

Location: Webequie Junction

Total Depth: 20.75 m

Date Completed: Oct 17, 11

Coordinates: 5,844,037 N, 464,475 E

Elevation: 238 m

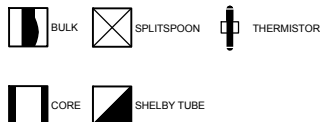
Logged by: RSM

Inclination: -90

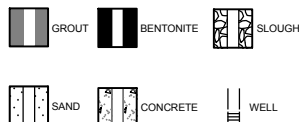
Reviewed by: CLS

DEPTH - (m)	ELEVATION - (m)	GRAPHIC LOG	MATERIAL DESCRIPTION	SOIL SAMPLE / RUN No.	SAMPLED CORE	RECOVERY (%)	RECOVERED SAMPLE TYPE	LABORATORY TESTS	UCS RATING	NoD	ROD (%)	RMR	KEY ROCK MASS CHARACTERISTICS			INSTRUMENTATION / WELL DEPTHS (m)	INSTRUMENTATION / WELL DETAILS	
													RECOVERY	RQD	RMR			
													SPT TEST 'N' VALUES - X					
													PL	MC	LL (%)			
													20	40	60	80		
13.0	225		SAND (7.36 to 14.65) Silty SAND, fine to coarse; some cobbles; some gravel, fine, subangular to subrounded; trace clay; well graded, non-plastic, light grey/brown, very dense, massive, moist. Suspected partially washed by drilling.	SPT-11		42					30/31/33/38	64						
				15		50												
				SPT-12		0					R/-/-	R						
				16		61												
				17		19												
15.0	223		SAND (14.65 to 15.52) Silty SAND, fine to coarse; some gravel, fine, subangular to subrounded; trace clay; well graded, non-plastic, light grey/brown, very dense, massive, moist.	SPT-13		33					33/59/96/50	155						
				SPT-14		0					28/R/-/-	R						
16.0	222		GRAVEL AND SILT (15.52 to 16.19) GRAVEL, fine to coarse, subangular to subrounded; AND SILT; well graded, non-plastic, light brown/grey. Suspected partially washed by drilling.	18		45												
				SPT-15		100					R/-/-	R						
17.0	221		SILT (16.19 to 17.02) Silty SAND, fine to coarse; some gravel, fine, subangular to subrounded; trace clay; well graded, non-plastic, light grey/brown, very dense, massive, moist.	19	BU-1	54												
			COBBLES (17.02 to 17.55) COBBLES; suspected washed by drilling.	20a		62												
				20b		100		15	1	83	76							
				21		91		15	1	91	79							
			(17.55 to 20.75) Rock Type: BEDROCK Colour: Black/white/pink Fabric and Textures: Fine grained															

SAMPLE SYMBOLS:



WELL SYMBOLS:



**NORONT RESOURCES LTD.
EAGLE'S NEST PROJECT**

**Knight Piésold
CONSULTING**

Project No. NB102-390/1	Ref. No. 10	Rev. 0
----------------------------	----------------	-----------

FIGURE A.3

I:\110200390\01\DATA\WORK FILES\WF3 - GINT LOGS FOR WEBEQUIE JUNCTION\2011 MW AT WJ GINT.GPJ
I:\0\GINT\LIBRARY\EAGLE'S NEST TEMP\KP LIB.GLB, DRILLHOLE LOG, KP DATA TEMPLATE.GDT, 06-Jan-12

Project: EAGLE'S NEST PROJECT

Drillhole No.: WJ-MW11-03

Page: 4 of 4

Contractor: Determination Drilling

Drill Type: CME55

Date Started: Oct 8, 11

Location: Webequie Junction

Total Depth: 20.75 m

Date Completed: Oct 17, 11

Coordinates: 5,844,037 N , 464,475 E

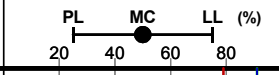
Elevation: 238 m

Logged by: RSM

Inclination: -90

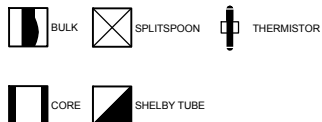
Reviewed by: CLS

DEPTH - (m)	ELEVATION - (m)	GRAPHIC LOG	MATERIAL DESCRIPTION	ROCK		SAMPLED CORE	RECOVERY (%)	RECOVERED SAMPLE TYPE	LABORATORY TESTS	UCS RATING	NoD	RQD (%)	RMR	KEY ROCK MASS CHARACTERISTICS			INSTRUMENTATION / WELL DEPTHS (m)	INSTRUMENTATION / WELL DETAILS
				SOIL	SAMPLE / RUN No.									RECOVERY (%)	FROZEN SOIL DESCRIPTION	FIELD TESTS		
			<p><u>Weathering:</u> Fresh</p> <p><u>Discont. Type:</u> Joints</p> <p><u>Discont. Orientation:</u> Jointing at 90°.</p> <p>Occasional healed joints at 90°.</p> <p><u>Other:</u> Soft infill (red/green) below 19.2 m depth.</p>															
	219					22	68			15	1	0	62					
	19.0					23	100			15	0	100	82					
	20.0					24	100			15	3	91	75					
	21.0		<p>End of Drillhole: 20.75 m</p> <p><u>Notes:</u></p> <ol style="list-style-type: none"> HW coring advanced to 20.75 m. Two monitoring wells installed at site. WJ-MW11-03S (shallow well) installed approximately 1 m to the west of WJ-MW11-03D (deep well). Coordinates of monitoring wells taken from handheld GPS unit. Accuracy of coordinates +/-5 m. The water level in the shallow well (WJ-MW11-03S) was 0.34 m below surface. The water level in the deep well (WJ-MW11-03D) was 4.64 m below surface. 															
	22.0																	
	23.0																	

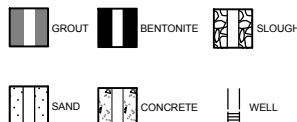


I:\11021003901\1\DATA\WORK FILES\WF3 - GINT LOGS FOR WEBEQUIE JUNCTION\2011 MW AT WJ GINT.GPJ
I:\GINT\LIBRARY\EAGLE'S NEST TEMP\KP LIB.GLB, DRILLHOLE LOG, KP DATA TEMPLATE.GDT, 06-Jan-12

SAMPLE SYMBOLS:



WELL SYMBOLS:

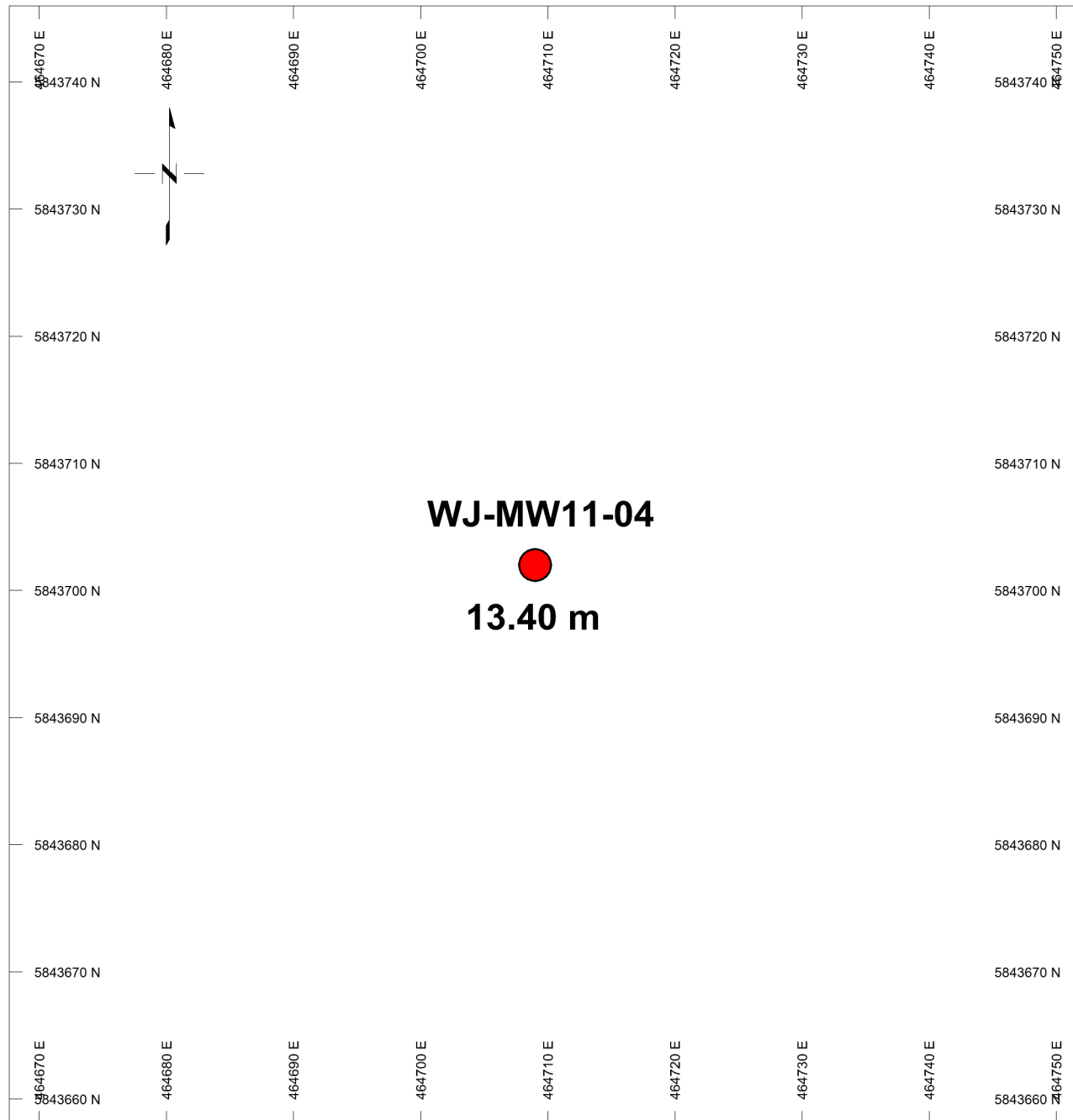



**NORONT RESOURCES LTD.
EAGLE'S NEST PROJECT**



Project No. NB102-390/1	Ref. No. 10	Rev. 0
----------------------------	----------------	-----------

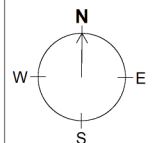
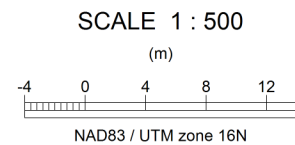
FIGURE A.3



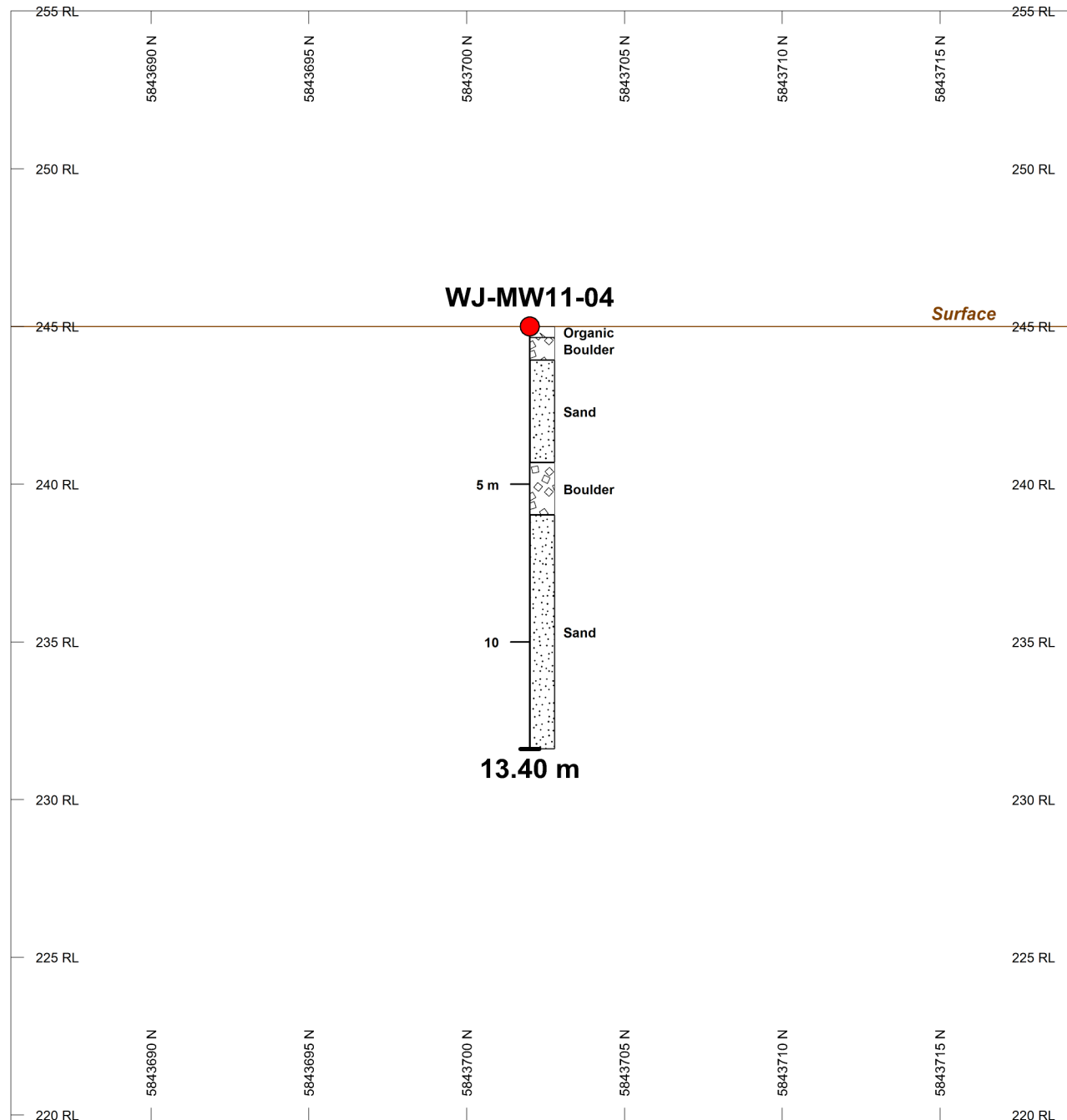
WJ-MW11-04 *Hole name*
 *Hole collar*
13.40 m *Final depth*

PLAN SPECS:

REF. PT. E, N	464700 m	5844000 m
EXTENTS	84.7 m	87.95 m



Noront Resources Ltd.
Webequie Junction
2011 Drill Program
WJ-MW11-04 Plan View



ROCK CODES

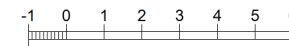
Pattern	Rock Type
	Boulder
	Organic
	Sand

SECTION SPECS:

REF. PT. E, N	464709 m	5843703 m
EXTENTS	33.88 m	35.18 m
SECTION TOP, BOT	255 m	219.8 m
TOLERANCE +/-	25 m	

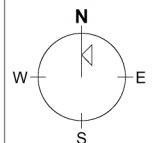
SCALE 1 : 200

(m)



NAD83 / UTM zone 16N

AZIMUTH = 0°



Noront Resources Ltd.

Webequie Junction

2011 Drill Program

WJ-MW11-04 Section View



Hole Number: **WJ-MW11-04**

Units: Metric

Project Number:	Webequie Junction	Coordinates Grid:	UTM83-16		
Project Name:	Webequie Junction	Coordinate Type Code:	Handheld GPS		
Planned Hole #:		Easting (m):	464709	Collar Azimuth:	0
Date Started:	Oct 19, 2011	Northing (m):	5843702	Collar Dip:	-90
Date Completed:	Oct 20, 2011	Elevation (m):	245	Final Depth (m):	13.40
Logged By:	Bronwyn Azar, Noront				
Overburden Logged By:	Reagan McIsaac, Knight Piésold				
Collar Survey:	No	Hole Size:	HQ	Contractor:	Determination Drilling
Multishot Survey:	No	Core Stored:	No	Core Stored At:	Esker Camp
Pulse EM Survey:	No	Hole Cemented:	No	Workplace:	Webequie Junction & Esker Camp
Is Hole Plugged:	No				
Hole Purpose:	Hole was drilled to: 1) test the geology and mineral potential in this previously unknown area; 2) test geophysical anomalies in the area; 3) 'condemn' the ground - i.e. to determine whether or not there are any mineral (and thus drill) targets in this area after having learned a little about the geology of the area; 4) test the overburden in this area to see if there are any boulders of favourable host rock (e.g. peridotite or nickel-bearing pebbles, cobbles, boulders); 5) test the overburden as a potential aggregate source; 6) reach any bedrock in the area via one or more of the holes drilled here (to test the depth to bedrock and type and condition of bedrock).				
Hole Results:	Hole did not encounter bedrock but did encounter cobbles and pebbles of granite-granodiorite (not favourable for mineralization but might be good for aggregate source). The overburden was poorly to well sorted & graded, and recovery was from 0 to 100%. The overburden material was heterogeneous in nature (0 to 100% recovery, poorly to well sorted, etc.) but did not contain much gravel (largely silty sand).				
Comments:	A groundwater monitoring well was also installed here for environmental baseline studies.				

Lithology

From	To	Lithology	Lithology Details			
			Colour	Grain Size	Texture	Mineralogy
0.00	0.35	Organic Material Peat.	Dark Brown			
0.35	1.06	Boulder Boulders. Black/white/pink, suspected washed by drilling.	Black-White-Pink	Boulder Sized		Feldspar, Quartz, Biotite
1.06	4.32	Sand Sand, fine to coarse; and silt; some gravel, fine to coarse, subangular to subrounded; trace clay; well graded, non-plastic, light grey/brown, compact, massive, moist.	Light Grey; Light Brown	Fine to Coarse Grained	Sub-Angular; Sub-Rounded; Sed. Graded Bedding	
4.32	5.97	Boulder Boulders. Black/white/pink, suspected washed by drilling.	Black-White-Pink	Boulder Sized		Feldspar, Quartz, Biotite
5.97	13.40	Sand Sand, fine to coarse; and silt, some gravel, fine to coarse, subangular to subrounded; trace clay; well graded, non-plastic, lightgrey/brown, very dense, massive, moist.	Light Grey; Light Brown	Fine to Coarse Grained	Sub-Angular; Sub-Rounded; Sed. Graded Bedding	

Project: EAGLE'S NEST PROJECT

Drillhole No.: WJ-MW11-04

Page: 1 of 3

Contractor: Determination Drilling

Drill Type: CME55

Date Started: Oct 19, 11

Location: Webequie Junction

Total Depth: 13.40 m

Date Completed: Oct 20, 11

Coordinates: 5,843,702 N, 464,709 E

Elevation: 245 m

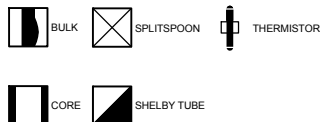
Logged by: RSM

Inclination: -90

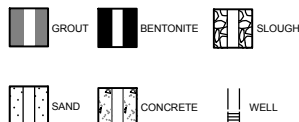
Reviewed by: CLS

DEPTH - (m)	ELEVATION - (m)	GRAPHIC LOG	MATERIAL DESCRIPTION	ROCK		SAMPLED CORE	RECOVERY (%)	RECOVERED SAMPLE TYPE	LABORATORY TESTS	UCS RATING	NoD	RQD (%)	RMR	KEY ROCK MASS CHARACTERISTICS			INSTRUMENTATION / WELL DEPTHS (m)	INSTRUMENTATION / WELL DETAILS
				SOIL	SAMPLE / RUN No.									PL	MC	LL (%)		
														SPT TEST 'N' VALUES - X				
			PEAT (0 to 0.35) PEAT.															
			BOULDER (0.35 to 1.06) BOULDER; black/white/pink, suspected washed by drilling.	1			90										0.3	
1.0	244		SAND AND SILT (1.06 to 4.32) SAND, fine to coarse; AND SILT; some gravel, fine to coarse, subangular to subrounded; trace clay; well graded, non-plastic, light grey/brown, compact, massive, moist.		SPT-1		63					12/13/19/20	32		X			
2.0	243																	
3.0	242				SPT-2		53					12/14/17/21	31		X			
4.0	241				SPT-3		60					5/13/15/22	28		X			
5.0	240		BOULDERS (4.32 to 5.97) BOULDERS; black/white/pink, suspected washed by drilling.	2			66											
				3			100											

SAMPLE SYMBOLS:



WELL SYMBOLS:



**NORONT RESOURCES LTD.
EAGLE'S NEST PROJECT**

**Knight Piésold
CONSULTING**

Project No. NB102-390/1	Ref. No. 10	Rev. 0
----------------------------	----------------	-----------

FIGURE A.4

I:\1102\00390\01\DATA\WORK FILES\WF3 - GINT LOGS FOR WEBEQUIE JUNCTION\2011 MW AT WJ GINT.GPJ
I:\GINT\LIBRARY\EAGLE'S NEST TEMP\KP LIB\GLB, DRILLHOLE LOG, KP DATA TEMPLATE.GDT, 06-Jan-12

Project: EAGLE'S NEST PROJECT

Drillhole No.: WJ-MW11-04

Page: 2 of 3

Contractor: Determination Drilling

Drill Type: CME55

Date Started: Oct 19, 11

Location: Webequie Junction

Total Depth: 13.40 m

Date Completed: Oct 20, 11

Coordinates: 5,843,702 N, 464,709 E

Elevation: 245 m

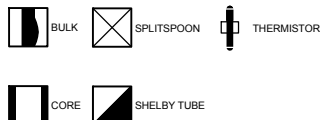
Logged by: RSM

Inclination: -90

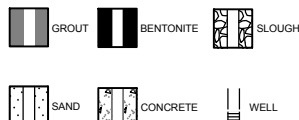
Reviewed by: CLS

DEPTH - (m)	ELEVATION - (m)	GRAPHIC LOG	MATERIAL DESCRIPTION	ROCK		SAMPLED CORE	RECOVERY (%)	RECOVERED SAMPLE TYPE	LABORATORY TESTS	UCS RATING	NoD	RQD (%)	RMR	KEY ROCK MASS CHARACTERISTICS			INSTRUMENTATION / WELL DEPTHS (m)	INSTRUMENTATION / WELL DETAILS
				SOIL	SAMPLE / RUN No.									RECOVERY (%)	RECOVERED SAMPLE TYPE	PL		
7.0	238		SAND AND SILT (5.97 to 13.4) SAND, fine to coarse; AND SILT, some gravel, fine to coarse, subangular to subrounded; trace clay; well graded, non-plastic, light grey/brown, very dense, massive, moist.	SPT-4			50											
				SPT-5			67					38/55/49/49	104				7.83	
				SPT-6			50					17/31/37/41	68				9.5	
				SPT-7			55					25/33/34/31	67					
11.0	234																	

SAMPLE SYMBOLS:



WELL SYMBOLS:



**NORONT RESOURCES LTD.
EAGLE'S NEST PROJECT**

**Knight Piésold
CONSULTING**

Project No. NB102-390/1	Ref. No. 10	Rev. 0
----------------------------	----------------	-----------

FIGURE A.4

I:\1102\00390\01\DATA\WORK FILES\WF3 - GINT LOGS FOR WEBEQUIE JUNCTION\2011 MW AT WJ GINT.GPJ
I:\GINT\LIBRARY\EAGLE'S NEST TEMP\KP LIB\GLB - DRILLHOLE LOG - KP DATA TEMPLATE.GDT, 06-Jan-12

Project: EAGLE'S NEST PROJECT

Drillhole No.: WJ-MW11-04

Page: 3 of 3

Contractor: Determination Drilling

Drill Type: CME55

Date Started: Oct 19, 11

Location: Webeque Junction

Total Depth: 13.40 m

Date Completed: Oct 20, 11

Coordinates: 5,843,702 N, 464,709 E

Elevation: 245 m

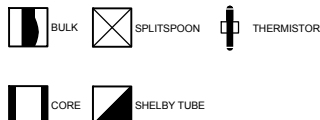
Logged by: RSM

Inclination: -90

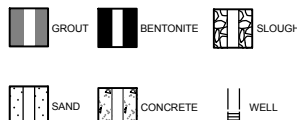
Reviewed by: CLS

DEPTH - (m)	ELEVATION - (m)	GRAPHIC LOG	MATERIAL DESCRIPTION	ROCK		SAMPLED CORE	RECOVERY (%)	RECOVERED SAMPLE TYPE	LABORATORY TESTS	UCS RATING	NoD	RQD (%)	RMR	KEY ROCK MASS CHARACTERISTICS			INSTRUMENTATION / WELL DEPTHS (m)	INSTRUMENTATION / WELL DETAILS	
				SOIL	SAMPLE / RUN No.									RECOVERY	RECOVERY	RECOVERY			
13.0	232		SAND AND SILT (5.97 to 13.4) SAND, fine to coarse; AND SILT, some gravel, fine to coarse, subangular to subrounded; trace clay; well graded, non-plastic, light grey/brown, very dense, massive, moist.											PL	MC	LL (%)	12.47		
			End of Drillhole: 13.4 m															13.1	
14.0	231		Notes: 1. HW coring advanced to 13.4 m. 2. One monitoring well installed at site. 3. Coordinates of monitoring wells taken from handheld GPS unit. Accuracy of coordinates +/-5 m.															13.4	
15.0	230																		
16.0	229																		
17.0	228																		

SAMPLE SYMBOLS:



WELL SYMBOLS:



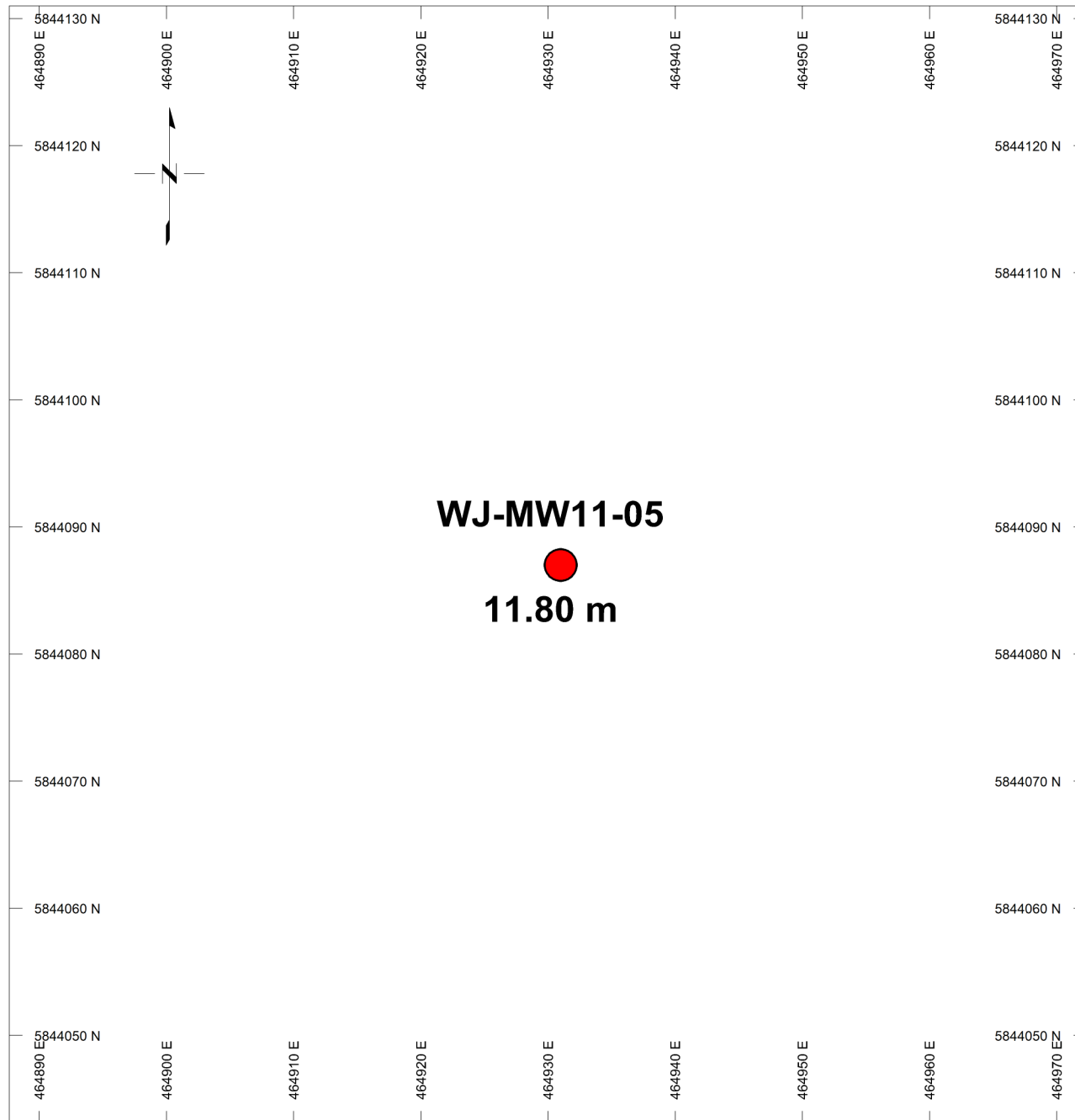
**NORONT RESOURCES LTD.
EAGLE'S NEST PROJECT**


**Knight Piésold
CONSULTING**

Project No. NB102-390/1	Ref. No. 10	Rev. 0
----------------------------	----------------	-----------

FIGURE A.4

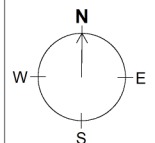
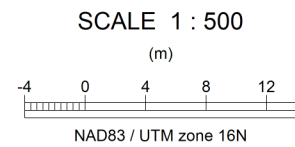
I:\1102\00390\01\A\DATA\WORK FILES\WF3 - GINT LOGS FOR WEBEQUE JUNCTION\2011 MW AT WJ GINT.GPJ
I:\GINT\LIBRARY\EAGLE'S NEST TEMP\KP LIB.GLB, DRILLHOLE LOG, KP DATA TEMPLATE.GDT, 06-Jan-12



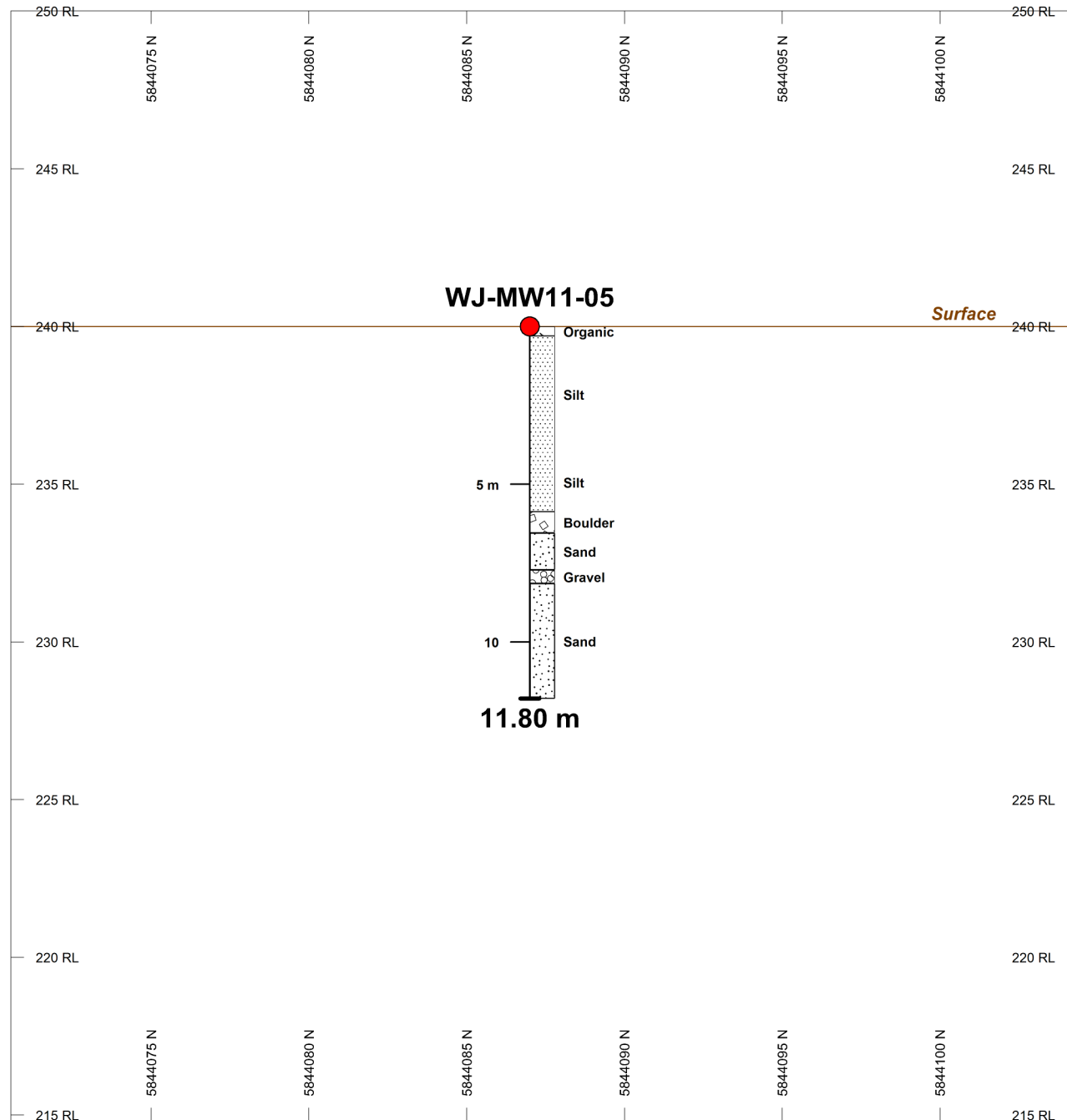
WJ-MW11-05 *Hole name*
 *Hole collar*
11.80 m *Final depth*

PLAN SPECS:

REF. PT. E, N 464900 m 5844000 m
EXTENTS 84.7 m 87.95 m



Noront Resources Ltd.
Webequie Junction
2011 Drill Program
WJ-MW11-05 Plan View



ROCK CODES

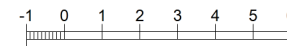
Pattern	Rock Type
	Boulder
	Gravel
	Organic
	Sand
	Silt

SECTION SPECS:

REF. PT. E, N	464931 m	5844088 m
EXTENTS	33.88 m	35.18 m
SECTION TOP, BOT	250 m	214.8 m
TOLERANCE +/-	25 m	

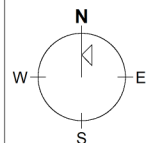
SCALE 1 : 200

(m)



NAD83 / UTM zone 16N

AZIMUTH = 0°



Noront Resources Ltd.

Webequie Junction

2011 Drill Program

WJ-MW11-05 Section View



Hole Number: **WJ-MW11-05**

Units: Metric

Project Number:	Webequie Junction	Coordinates Grid:	UTM83-16		
Project Name:	Webequie Junction	Coordinate Type Code:	Handheld GPS		
Planned Hole #:		Easting (m):	464931	Collar Azimuth:	0
Date Started:	Oct 05, 2011	Northing (m):	5844087	Collar Dip:	-90
Date Completed:	Oct 06, 2011	Elevation (m):	240	Final Depth (m):	11.80
Logged By:	Bronwyn Azar, Noront				
Overburden Logged By:	Reagan McIsaac, Knight Piésold				
Collar Survey:	No	Hole Size:	HQ	Contractor:	Determination Drilling
Multishot Survey:	No	Core Stored:	No	Core Stored At:	Esker Camp
Pulse EM Survey:	No	Hole Cemented:	No	Workplace:	Webequie Junction & Esker Camp
Is Hole Plugged:	No				
Hole Purpose:	Hole was drilled to: 1) test the geology and mineral potential in this previously unknown area; 2) test geophysical anomalies in the area; 3) 'condemn' the ground - i.e. to determine whether or not there are any mineral (and thus drill) targets in this area after having learned a little about the geology of the area; 4) test the overburden in this area to see if there are any boulders of favourable host rock (e.g. peridotite or nickel-bearing pebbles, cobbles, boulders); 5) test the overburden as a potential aggregate source; 6) reach any bedrock in the area via one or more of the holes drilled here (to test the depth to bedrock and type and condition of bedrock).				
Hole Results:	Hole did not encounter bedrock but did encounter cobbles and pebbles of granite-granodiorite (not favourable for mineralization but might be good for aggregate source). The overburden was poorly to well sorted & graded, and recovery was from 0 to 100%. The overburden material was heterogeneous in nature (0 to 100% recovery, poorly to well sorted, etc.) but did not contain much gravel (largely silty sand).				
Comments:	A groundwater monitoring well was also installed here for environmental baseline studies.				

Hole Number: **WJ-MW11-05**

Units: Metric

Lithology

Page 2 of 2

From	To	Lithology	Lithology Details			
			Colour	Grain Size	Texture	Mineralogy
0.00	0.30	Organic Material Peat.	Dark Brown			
0.30	4.00	Silt Silt and sand. Fine to coarse; trace gravel, fine, subangular to subrounded; trace clay; trace cobbles; well graded, non-plastic, light brown with dark brown patches, loose to very dense, massive, dry to moist. Soil becomes more dense with depth.	Light Brown; Dark Brown	Fine to Coarse Grained	Sub-Angular; Sub-Rounded; Sed. Graded Bedding	
4.00	5.87	Silt Silt; some sand, fine to coarse; well graded, non-plastic, light brown with dark brown patches, very stiff, massive, moist.	Light Brown; Dark Brown	Fine Grained	Sed. Graded Bedding; Massive	
5.87	6.54	Boulder Boulders. Trace gravel, fine to coarse, subangular to subrounded; pink/black/white, suspected washed by drilling. Boulder is composed of feldspar/biotite/quartz.	Black-White-Pink	Boulder Sized	Sub-Angular; Sub-Rounded	Feldspar, Quartz, Biotite
6.54	7.72	Sand Silt and sand. Fine to coarse; trace gravel, fine to coarse, subangular to subrounded; well graded, light brown with dark brown patches, very dense, massive, moist.	Light Brown; Dark Brown	Fine to Coarse Grained	Sub-Angular; Sub-Rounded; Sed. Graded Bedding	
7.72	8.14	Gravel Cobbles with much gravel. Fine to coarse, subangular to subrounded; trace sand, fine to coarse; suspected washed by drilling.		Fine to Coarse Grained	Sub-Angular; Sub-Rounded	
8.14	11.80	Sand Silt and sand. Fine to coarse; trace gravel, fine to coarse, subangular to subrounded; well graded, light brown with dark brown patches, very dense, massive, moist.	Light Brown; Dark Brown	Fine to Coarse Grained	Sub-Angular; Sub-Rounded; Sed. Graded Bedding	

Project: EAGLE'S NEST PROJECT

Drillhole No.: WJ-MW11-05

Page: 1 of 3

Contractor: Determination Drilling

Drill Type: CME55

Date Started: Oct 5, 11

Location: Webeque Junction

Total Depth: 11.80 m

Date Completed: Oct 6, 11

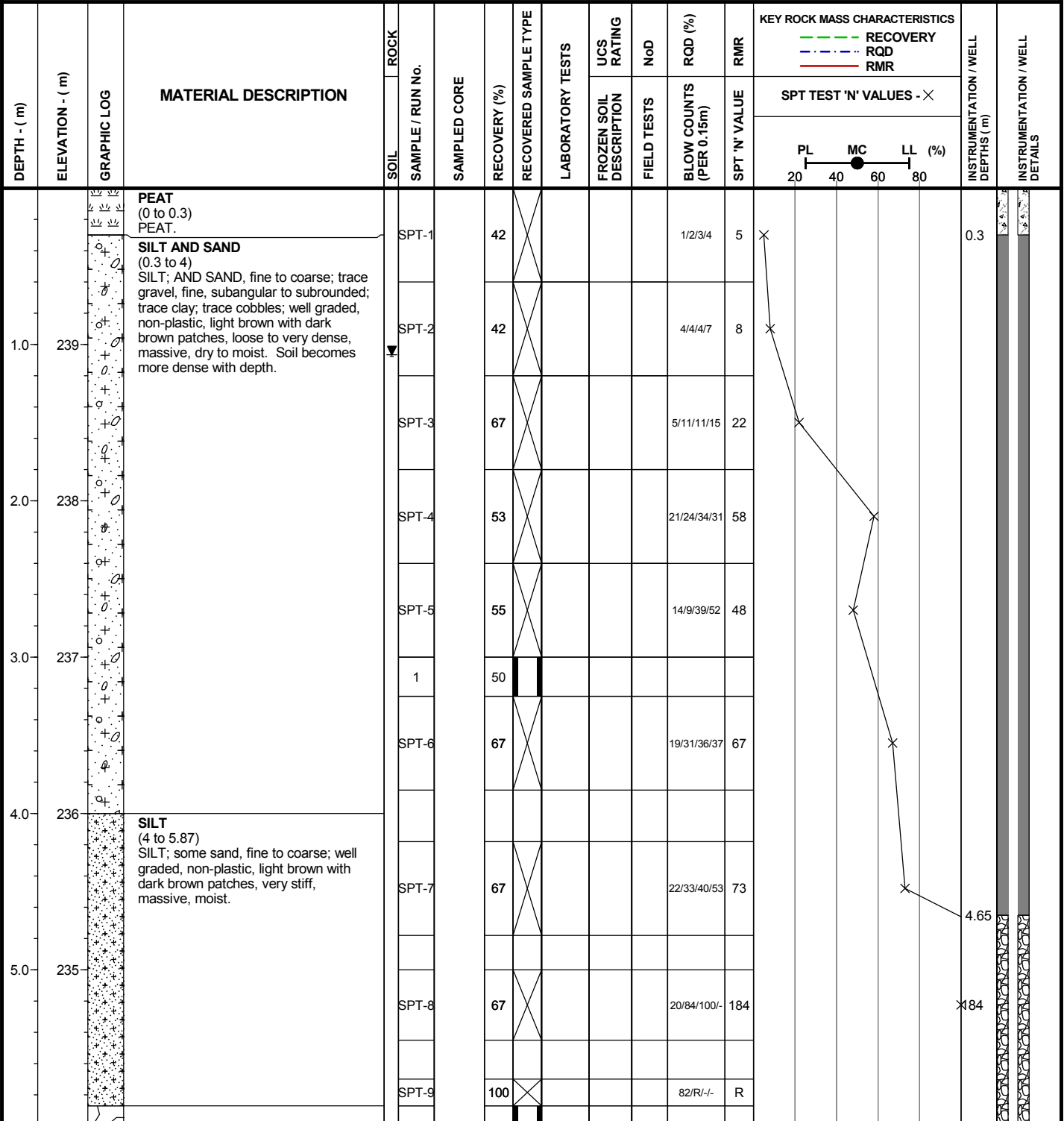
Coordinates: 5,844,087 N, 464,931 E

Elevation: 240 m

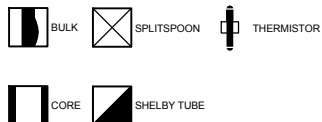
Logged by: RSM

Inclination: -90

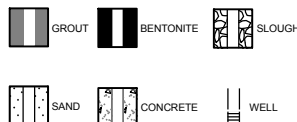
Reviewed by: CLS



SAMPLE SYMBOLS:



WELL SYMBOLS:



**NORONT RESOURCES LTD.
EAGLE'S NEST PROJECT**



Project No. NB102-390/1	Ref. No. 10	Rev. 0
----------------------------	----------------	-----------

FIGURE A.5

I:\110200390\1\DATA\WORK FILES\WF3 - GINT LOGS FOR WEBEQUE JUNCTION\2011 MW AT WJ GINT.GPJ
I:\GINT\LIBRARY\EAGLE'S NEST\TEMP\KP LIB.GLB, DRILLHOLE LOG, KP DATA TEMPLATE.GDT, 06-Jan-12

Project: EAGLE'S NEST PROJECT

Drillhole No.: WJ-MW11-05

Page: 2 of 3

Contractor: Determination Drilling

Drill Type: CME55

Date Started: Oct 5, 11

Location: Webeque Junction

Total Depth: 11.80 m

Date Completed: Oct 6, 11

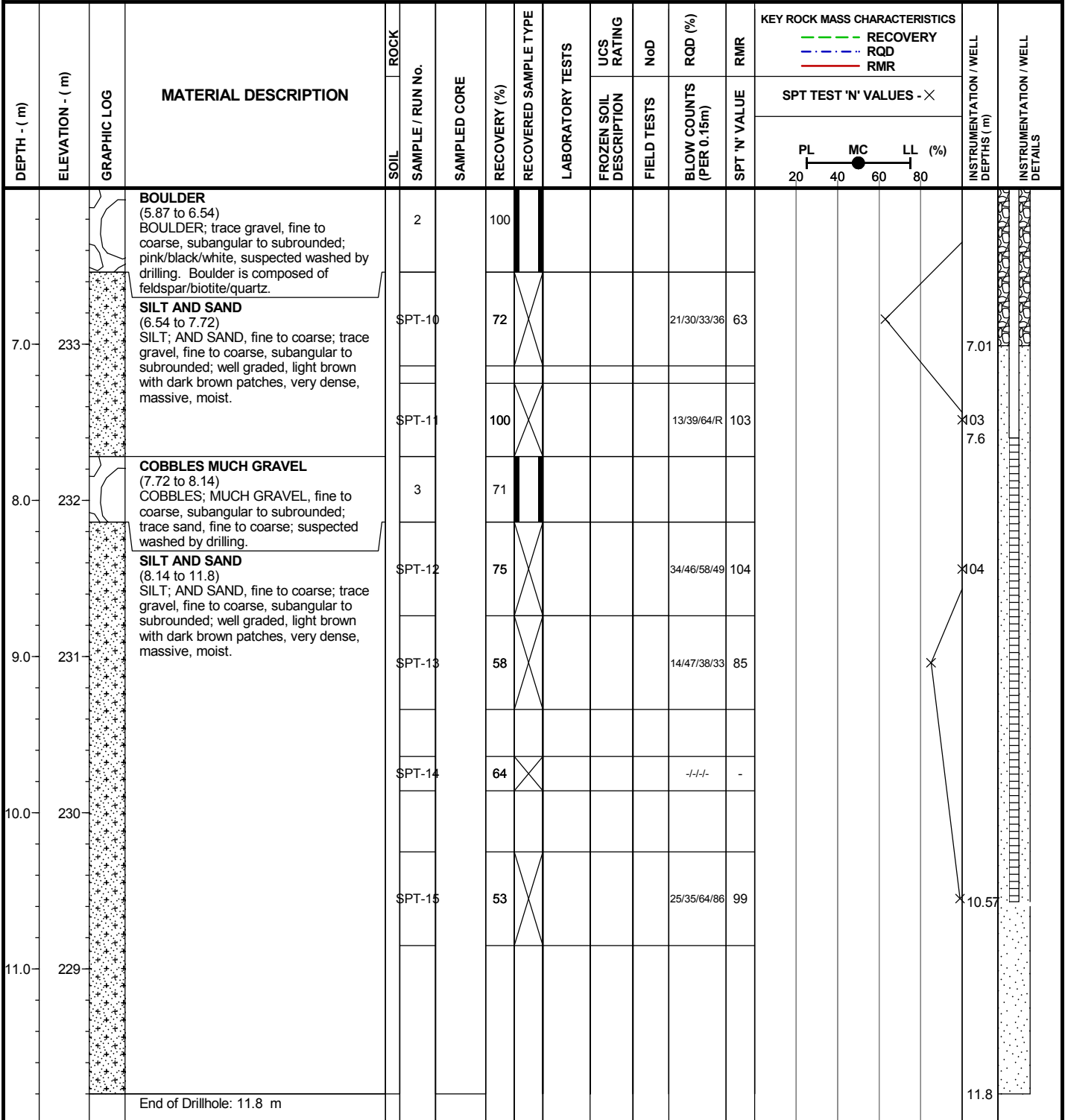
Coordinates: 5,844,087 N, 464,931 E

Elevation: 240 m

Logged by: RSM

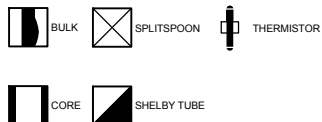
Inclination: -90

Reviewed by: CLS

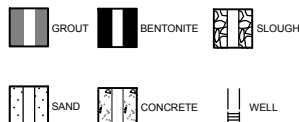


I:\1102003901\1\DATA\WORK FILES\WF3 - GINT LOGS FOR WEBEQUE JUNCTION\2011 MW AT WJ GINT.GPJ
I:\GINT\LIBRARY\EAGLE'S NEST TEMP\KP LIB.GLB, DRILLHOLE LOG, KP DATA TEMPLATE.GDT, 06-Jan-12

SAMPLE SYMBOLS:



WELL SYMBOLS:



**NORONT RESOURCES LTD.
EAGLE'S NEST PROJECT**



Project No. NB102-390/1	Ref. No. 10	Rev. 0
----------------------------	----------------	-----------

FIGURE A.5

Project: EAGLE'S NEST PROJECT

Drillhole No.: WJ-MW11-05

Page: 3 of 3

Contractor: Determination Drilling

Drill Type: CME55

Date Started: Oct 5, 11

Location: Webequie Junction

Total Depth: 11.80 m

Date Completed: Oct 6, 11

Coordinates: 5,844,087 N, 464,931 E

Elevation: 240 m

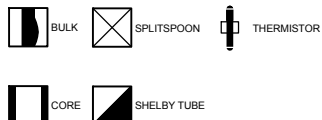
Logged by: RSM

Inclination: -90

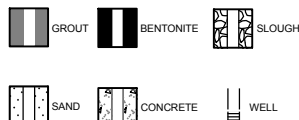
Reviewed by: CLS

DEPTH - (m)	ELEVATION - (m)	GRAPHIC LOG	MATERIAL DESCRIPTION	ROCK		SAMPLED CORE	RECOVERY (%)	RECOVERED SAMPLE TYPE	LABORATORY TESTS	UCS RATING	NoD	RQD (%)	RMR	KEY ROCK MASS CHARACTERISTICS			INSTRUMENTATION / WELL DEPTHS (m)	INSTRUMENTATION / WELL DETAILS
				SOIL	SAMPLE / RUN No.									RECOVERY	RECOVERY	RECOVERY		
13.0	227		Notes: 1. HW coring advanced to 11.8 m. 2. One monitoring well installed at site. 3. Coordinates of monitoring wells taken from handheld GPS unit. Accuracy of coordinates +/-5 m.															
14.0	226																	
15.0	225																	
16.0	224																	
17.0	223																	

SAMPLE SYMBOLS:



WELL SYMBOLS:



**NORONT RESOURCES LTD.
EAGLE'S NEST PROJECT**

**Knight Piésold
CONSULTING**

Project No. NB102-390/1	Ref. No. 10	Rev. 0
----------------------------	----------------	-----------

FIGURE A.5

I:\1102\00390\01\DATA\WORK FILES\WF3 - GINT LOGS FOR WEBEQUIE JUNCTION\2011 MW AT WJ GINT.GPJ
I:\0\GINT\LIBRARY\EAGLE'S NEST TEMP\KP LIB.GLB, DRILLHOLE LOG, KP DATA TEMPLATE.GDT, 06-Jan-12