

We are committed to providing [accessible customer service](#).
If you need accessible formats or communications supports, please [contact us](#).

Nous tenons à améliorer [l'accessibilité des services à la clientèle](#).
Si vous avez besoin de formats accessibles ou d'aide à la communication, veuillez [nous contacter](#).

Assessment Report
On the
2016 Induced Polarization Survey

Kenogamisis Claim Block
Greenstone Gold Mines

Thunder Bay Mining Division
Lindsley, Errington and Ashmore Townships

Table of Contents

Table of Contents.....	ii
1.0 Summary	4
2.0 Introduction	4
3.0 Property Description, Access, Climate and Physiography	5
4.0 Geological Setting	11
4.1 Regional Geology	11
4.2 Property Geology	14
5.0 Exploration History	16
6.0 Work dispersion over individual claims	17
7.0 Grid line cutting and picketing	21
8.0 2016 Induced polarization survey	21
9.0 Conclusions and Recommendations	21
10.0 References	22
Appendices.....	23
Appendix A	24
<i>Tenure Map</i>	24
Appendix B	25
<i>IP Survey Lines</i>	25
Appendix C	28
<i>Clearview Geophysics Induced Polarization Survey Report</i>	28
Appendix D	55
<i>Clearview Geophysics Induced Polarization Survey Psuedo-Sections/ Inversions</i>	55

List of Figures

Figure 1: Property Location Map	6
Figure 2: Property Claim Map	7
Figure 3: Regional Geology.	13
Figure 4: Property Geology Map.....	15
Figure 5 - Little Longlac Mine Lines.....	26
Figure 6 - McLellan Mine, Magnet Mine, Bankfield Mine, Bankfield West lines.....	27

List of Tables

Table 1: Claim Summary	7
------------------------------	---

1.0 Summary

Greenstone Gold Mines completed grid line cutting and picketing and conducted an induced polarization survey over 5 targets testing areas of known and potential gold mineralization within the Kenogamisis Claim block located near Geraldton, Ontario. The work was completed in March and April 2016 by GGM employees, line cutting contractor (A-Star Prospecting and Michael Goodman) and Clearview Geophysics. A detailed report on the findings was provided by Clearview and a recommendation by GGM geologists for exploration will follow.

2.0 Introduction

In the late spring of 2016 Greenstone Gold Mines completed a total of 33.75km of grid lines throughout the Kenogamisis Claim Block for the purpose of IP (induced Polarization) Geophysical Survey. Due to the required line length needed to achieve the desired depth of survey lines extended on to neighbouring claims. Therefore 24.2 km of grid lines were cut on GGM property. For the purpose of this assessment the application of expenditure on line cutting/picketing, IP surveying and GPS survey will be averaged over 1 km lengths as follows.

Line cutting / Picketing - \$1000 per km

IP Survey - \$2771 per km

GPS Survey – \$150 Per km

All work took place between the 10th of March and the 25th of April.

See assessment report for Clearview Geophysics in Appendix B.

3.0 Property Description, Access, Climate and Physiography

GGM's Kenagamis Claim Block is a contiguous block of land made up of patented claims, mining leases, and licenses of occupation and staked unpatented mining claims. The property covers a total approximate area of 15,276.3 hectares and is located in Lindsley, Errington, Ashmore, Parent, Salsberg and McKelvie Townships in the Thunder Bay Mining Division (Figures 1 and 2). The property is subject to a number of underlying royalty agreements and a detailed tenure map of the property can be found in Appendix A.

The property is situated in the Thunder Bay Mining Division of Ontario, with all claims located on NTS sheets 42 E/10 and 42 E/11. The property is located approximately 275 kilometres northeast of the city of Thunder Bay, Ontario and approximately 2 kilometres south of the town of Geraldton, Ontario. The city of Thunder Bay has a population of 110,000 and provides support services, equipment and skilled labour for both the mineral exploration and mining industry. Rail, national highway, port and international airport services are also available out of Thunder Bay. The town of Geraldton has a population of approximately 2,400 and can provide basic support services such as food and lodging.

From Thunder Bay, the property can be reached by travelling east on Trans Canada Highway 11/17 until one reaches the town of Nipigon and then north along Trans Canada Highway 11. The property can be directly accessed via Highway 11. The property is accessible year round from Geraldton or Highway 11, which crosses the property from east to west. The southern portion of the property is accessed via Highway 11. The remainder of the Property can be easily accessed by four wheel drive vehicles via numerous logging/bush roads that branch off of the paved highway. Those areas of the property that are not serviced by roads can be access by ATV, on foot or by boat in the summer and by snowmobile during the winter months.

There are several past producing gold mines on the Property, including the Hard Rock, MacLeod-Cockshutt, Mosher (all later combined as the Consolidated Mosher), Little Long Lac, Bankfield and Magnet Mines. There are also a number of less significant historical occurrences of gold mineralization within the property boundary. The mineralized zone that is host to the most recently delineated mineral resources is within or adjacent to the former Hard Rock and MacLeod-Cockshutt Mines.

Local area First Nations groups include Ginoogaming and Long Lake 58 First Nations. Premier Gold Mines (Parent company to GGM) has engaged both FN groups in the Hardrock Property area at the outset of exploration in 2009. A Memorandum of understanding was created with Ginoogaming FN in July 2009 and an Exploration Agreement was signed with Long Lake 58 FN in March 2010. Both the Memorandum and Exploration Agreement are helping to establish a commitment by both parties to develop a mutually beneficial and cooperative working relationship (Reddick et al, 2010).

The topography of the area is relatively flat with some gently rolling hills. Local relief ranges up to 20 metres and that is largely due to glacial deposits that cover the bedrock. Lower lying areas are

characterized by swamps and ponds with overall drainage in the area being poor. The largest Lake on the Property is Kenogamisis Lake, which bounds the project area to the east and north.

Vegetation in the area is dominated by coniferous trees, with the most common tree species being black spruce, tamarack and cedar. There are local stands of birch, jack pine, and poplar in areas with better drainage, such as eskers and moraines.

Climate in the area is typical of northern Ontario with temperatures ranging from a maximum of 40° Celsius in the summer to lows of -50° Celsius in the winter months. The mean annual rainfall is recorded at 546.4 millimeters and the mean annual snowfall is 244.5 centimeters (based on statistics gathered at the weather station in Geraldton). Weather conditions do not seriously hinder exploration and mining activities on the property, but adjustments on the type of work performed are subject to season variations, such as, geological mapping in the summer months and drilling in the winter months on frozen lakes.

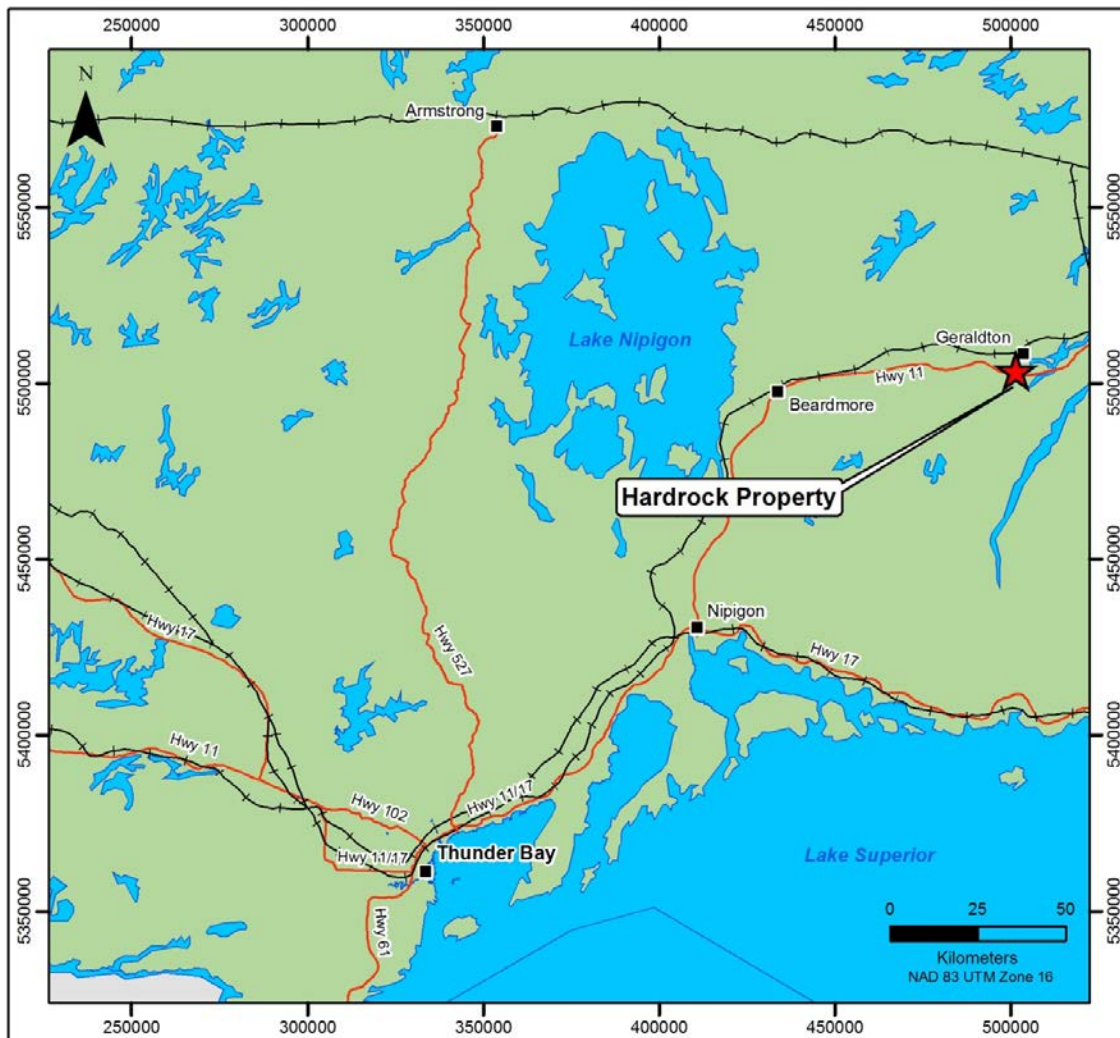


Figure 1: Property Location Map.

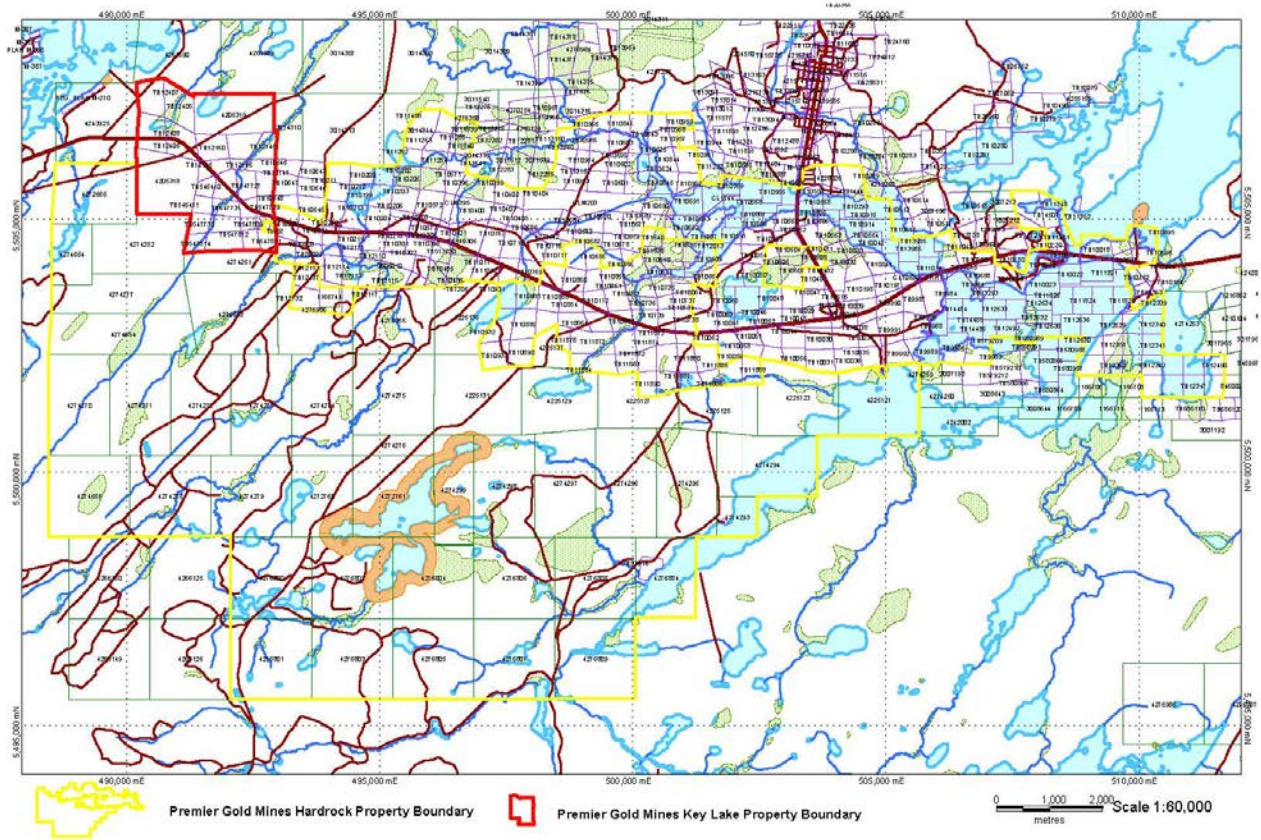


Figure 2: Property Claim Map.

Table 1: Summary of claims work was performed on

Claim #	Claim Holder	Land Tenure	Township
CLM203	GREENSTONE GOLD MINES GP INC	Lease	Errington
TB10199	GREENSTONE GOLD MINES GP INC	Patented	Errington
TB10200	GREENSTONE GOLD MINES GP INC	Patented	Errington
TB10201	GREENSTONE GOLD MINES GP INC	Patented	Errington
TB10211	GREENSTONE GOLD MINES GP INC	Patented	Errington
TB10212	GREENSTONE GOLD MINES GP INC	Patented	Errington
TB10213	GREENSTONE GOLD MINES GP INC	Patented	Errington; Lindsley

TB10214	GREENSTONE GOLD MINES GP INC	Patented	Errington; Lindsley
TB10215	GREENSTONE GOLD MINES GP INC	Patented	Errington
TB10225	GREENSTONE GOLD MINES GP INC	Patented	Lindsley
TB10302	GREENSTONE GOLD MINES GP INC	Patented	Errington
TB10396	GREENSTONE GOLD MINES GP INC	Patented	Errington
TB10397	GREENSTONE GOLD MINES GP INC	Patented	Errington
TB10398	GREENSTONE GOLD MINES GP INC	Patented	Errington
CLM395	GREENSTONE GOLD MINES GP INC	Lease	Errington
TB10556	GREENSTONE GOLD MINES GP INC	Patented	Errington
TB10559	GREENSTONE GOLD MINES GP INC	Part-Patented; Part Licence of Occupation	Errington
TB10560	GREENSTONE GOLD MINES GP INC	Part-Patented; Part Licence of Occupation	Errington
TB10561	GREENSTONE GOLD MINES GP INC	Part-Patented; Part Licence of Occupation	Errington
TB10562	GREENSTONE GOLD MINES GP INC	Part-Patented; Part Licence of Occupation	Ashmore; Errington
TB10565	GREENSTONE GOLD MINES GP INC	Part-Patented; Part Licence of Occupation	Errington
TB10566	GREENSTONE GOLD MINES GP INC	Part-Patented; Part Licence of Occupation	Errington
TB10570	GREENSTONE GOLD MINES GP INC	Licence of Occupation	Errington
TB10600	GREENSTONE GOLD MINES GP INC	Patented	Errington
TB10684	GREENSTONE GOLD MINES GP INC	Patented	Errington
TB10685	GREENSTONE GOLD MINES GP INC	Patented	Errington
TB10686	GREENSTONE GOLD MINES GP INC	Patented	Errington
TB10716	GREENSTONE GOLD MINES GP INC	Patented	Errington
TB10717	GREENSTONE GOLD MINES GP INC	Patented	Errington
TB10769	GREENSTONE GOLD MINES GP INC	Patented	Errington

TB10846	GREENSTONE GOLD MINES GP INC	Patented	Errington
TB10887	GREENSTONE GOLD MINES GP INC	Licence of Occupation	Errington
TB10953	GREENSTONE GOLD MINES GP INC	Patented	Errington
TB10954	GREENSTONE GOLD MINES GP INC	Patented	Errington
TB10955	GREENSTONE GOLD MINES GP INC	Patented	Errington
TB10956	GREENSTONE GOLD MINES GP INC	Patented	Errington
TB113161	GREENSTONE GOLD MINES GP INC	Lease	Errington
TB113162	GREENSTONE GOLD MINES GP INC	Lease	Errington
TB11641	GREENSTONE GOLD MINES GP INC	Patented	Errington
TB12147	GREENSTONE GOLD MINES GP INC	Patented	Lindsley
TB12148	GREENSTONE GOLD MINES GP INC	Patented	Lindsley
TB20029	GREENSTONE GOLD MINES GP INC	Patented	Errington; Lindsley
TB513730	GREENSTONE GOLD MINES GP INC	Lease	Errington
TB519305	GREENSTONE GOLD MINES GP INC	Lease	Errington
TB519306	GREENSTONE GOLD MINES GP INC	Lease	Errington
TB547727	GREENSTONE GOLD MINES GP INC	Lease	Lindsley
TB547728	GREENSTONE GOLD MINES GP INC	Lease	Lindsley
TB547729	GREENSTONE GOLD MINES GP INC	Lease	Lindsley
TB547730	GREENSTONE GOLD MINES GP INC	Lease	Lindsley
TB547808	GREENSTONE GOLD MINES GP INC	Lease	Lindsley
TB547809	GREENSTONE GOLD MINES GP INC	Lease	Lindsley
TB547810	GREENSTONE GOLD MINES GP INC	Lease	Lindsley
TB547812	GREENSTONE GOLD MINES GP INC	Lease	Lindsley

TB547813	GREENSTONE GOLD MINES GP INC	Lease	Lindsley
TB861858	GREENSTONE GOLD MINES GP INC	Lease	Errington
3005010	GREENSTONE GOLD MINES GP INC	Unpatented	ERRINGTON
4221442	GREENSTONE GOLD MINES GP INC	Unpatented	ERRINGTON

4.0 Geological Setting

4.1 Regional Geology

A map showing the regional geology can be seen in Figure 3. The following has been taken from the Hardrock Property 2010 NI 43-101 Report completed by Reddick Consulting Inc. (T.Armstrong, M. Srivastava, and J. Reddick, 2010);

The Hardrock Property is in a greenstone belt that contains several narrow, east-west striking sequences of volcanic and sedimentary rocks of Archean age. The southern edges of these sequences are spatially related to the through-going, major structural discontinuities thought to be thrust faults that have imbricated the sedimentary sequences. A good description of the regional geology can be found in Smyk et al., 2005.

In the immediate Geraldton area the dominant rock types are clastic sediments (greywacke and arenite), oxide facies iron formations (BIF) and minor mafic metavolcanics. There are a number of younger intrusives, including an albite-rich porphyry unit (Hard Rock Porphyry) that is spatially associated with much of the gold mineralization on the Hard Rock, MacLeod-Cockshutt and Mosher Mines. Significant gold mineralization is also often spatially associated with BIF. In the case of the Little Long Lac Mine, gold mineralization is primarily hosted by an arkosic unit.

In addition to the belt scale and local faulting, there has been locally intense ductile deformation of the rocks in the Geraldton area which is manifested as tight to almost isoclinals, generally upright, polyharmonic folding of major lithologic units, penetrative deformation, folding and boundinage of veins, lithographic units and local transposition of primary contacts. The degree of deformation is apparent in deformed rocks that are dependent on both primary Lithology and proximity to the Bankfield-Tombill Fault.

Gold mineralization in the Hard Rock, MacLeod-Cockshutt, Mosher Mines and the Little Long Lac Mine generally occurs in association with subvertical structures associated with quartz veins or stringers, minor to semi-massive sulphides (associated with replacement zones in BIF), weak to moderate carbonate and weak to strong sericite alteration. The ore zones rake shallowly towards the west in the vicinity of the Hard Rock, MacLeod-Cockshutt and Mosher Mines (15-30° W) and slightly more steeply towards the west at the Little Long Lac Mines (50-60° W), indicative of a strong structural control that post-dates the tight folding of the primary lithological units.

The gold mineralization occurs in variety of host rocks and the style of mineralization is partly a function of the host rock. While the location and overall orientation of the ore bodies appear to have been largely structurally controlled, the deformation of the ore bodies has not been as intense as that of the

host rocks. Nevertheless, there are areas where local folding and boundinage of mineralized veins is apparent. Additionally, there are strong secondary controls that influence the extent and intensity of gold mineralization such as the competency contract between host rocks (e.g. the Hard Rock Porphyry and its contacts with either wacke or BIF) and the chemical character of the host rocks (e.g. oxide facies BIF being replaced by sulphides).

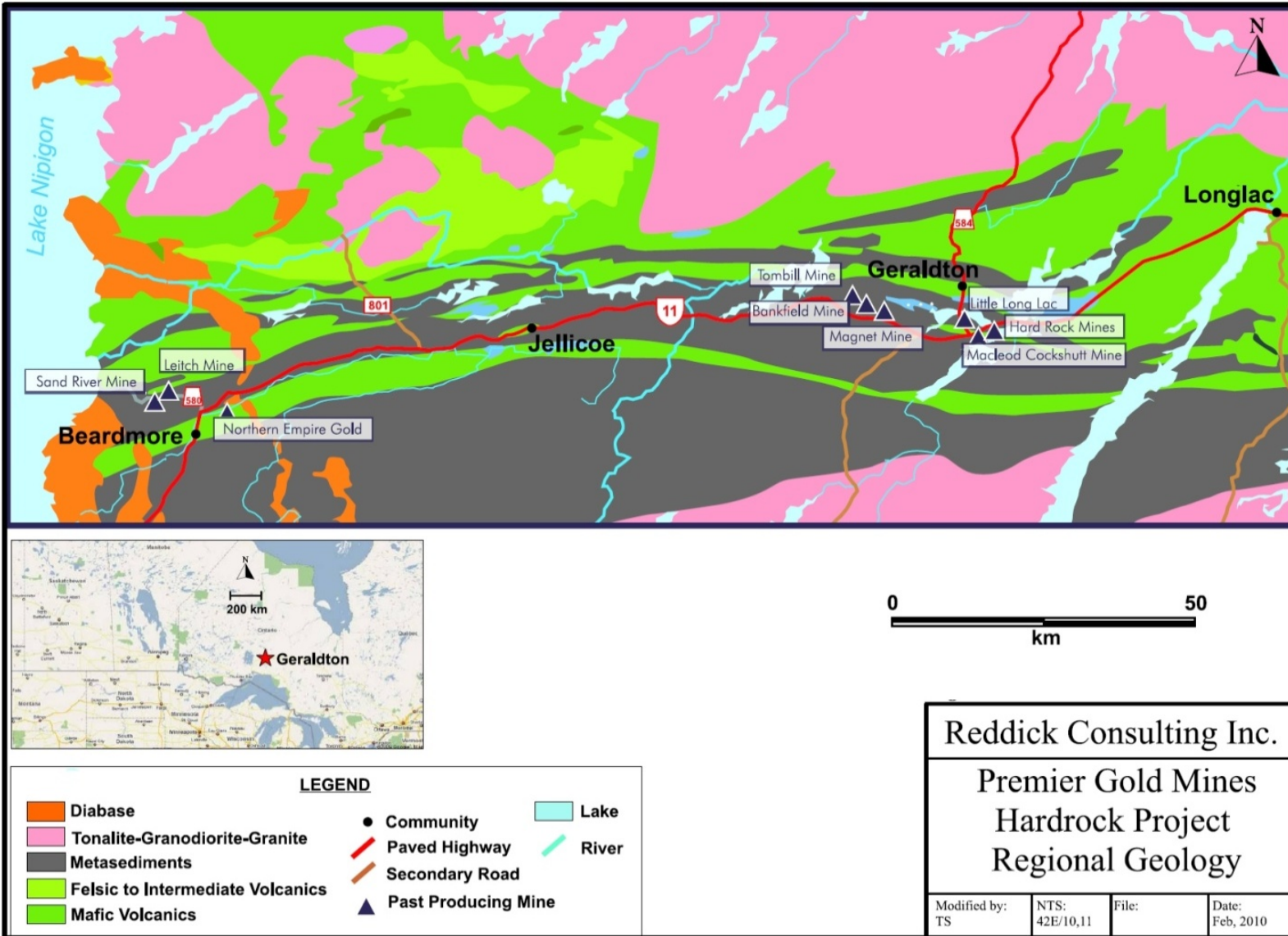


Figure 3: Regional Geology of the Geraldton-Beardmore Area.
Refer to Figure 4 for location of Key Lake Property in relation to Past Producing Mines.

Source: Armstrong et al., 2010.

4.2 Property Geology

A map showing the property geology can be seen in figure 4. The following has been taken from the Hardrock Property 2010 NI 43-101 Report completed by Reddick Consulting Inc. (T. Armstrong, M. Srivastava, and J. Reddick, 2010);

The southern limit of the Property is largely coincident with the Bankfield-Tombill Fault (also called the Bankfield-Tombill Fault Zone, Tombill-Bankfield Deformation Zone and Barton Bay Deformation Zone).

The fault is variably deformed; largely ductile, high strain zone characterized by strong heterogeneous penetrative strain, narrow shear zones and breccias zones cutting a variety of protoliths. Where it is most highly deformed it is described as a “crush zone” by Smyk et al., pg 14, 2005 that “has been intensely silicified (Pye, 1952), Carbonatized (Anglin and Franklin, 1985) and contains minor amounts of gold (Pye, 1952).” Horwood and Pye (1951) describe this fault as a “strongly sheared and brecciated zone, which in Ashmore Township attains a width of 40 feet, strikes N. 77° W. and dips and 70° S.”

South of the Bankfield-Tombill Fault the rock are primarily sediments. The north of the Bankfield-Tombill Fault, the property is dominated by a series of sedimentary units that have an approximate east-west and subvertical orientation. The majority of these units are greywacke, arenite or oxide facies iron formation. Minor conglomerate and argillite rich units are also found. The host unit of the Little Long Lac Mine has historically been referred to as an arkose, but Horwood and Pye (1951) suggested that this unit, although distinctive, would be better termed a quartz greywacke. Individual mm-cm scale bedding is commonly observed in turbidite type sequences within the well bedded units. Massive wacke and arenaceous units are also found. Oxide facies iron formation units (BIF) can vary from cm to decimeter scale in thickness, with mm to cm beds common. Although the BIF units are locally tightly folded, attenuated or boundinaged, individual units can in some cases be traced for hundreds to thousands of metres along strike. The greywacke in the vicinity of the Hard Rock and MacLeod-Coskshutt Mines can contain up to 5% mm-cm scale magnetite beds and has been historically referred to as “Lean Iron Formation” in the mine terminology.

Intrusive rocks include felsic intrusives, notably the Hard Rock Porphyry, diorite, gabbro, and diabase dykes. It is of interest that the Hard Rock Porphyry seems to be sill-like in nature. Even though it is tightly folded and the contacts between it and the sedimentary units are often highly deformed, the general scale and folding pattern of the porphyry very closely matches the geometry of the conglomerate unit that occurs in the vicinity of the Hard Rock and MacLeod Cockshutt Mines.

Deformed quartz and quartz carbonate veins and sulphidised replacement zones occur in BIF host and are spatially related to gold mineralization.

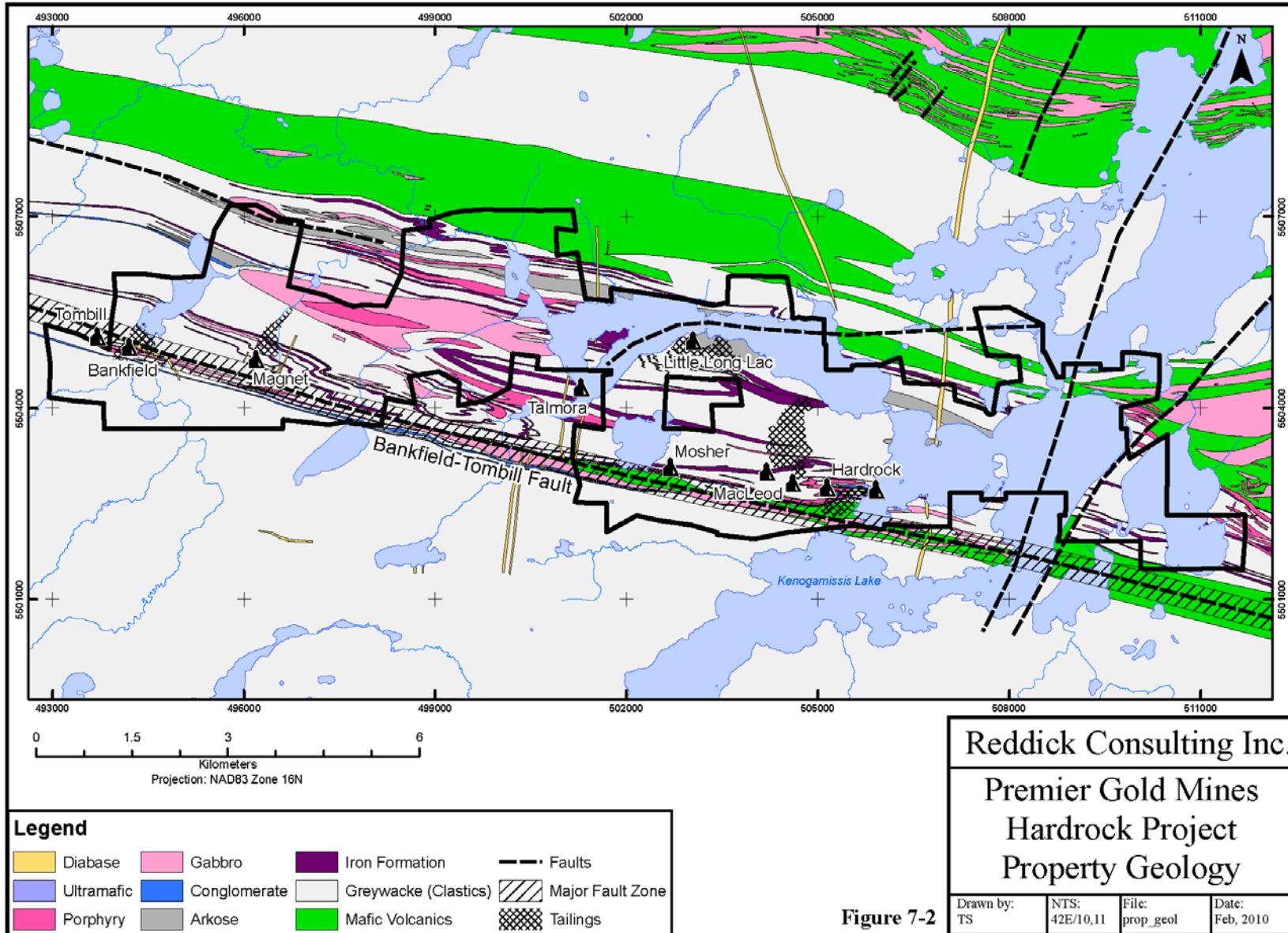


Figure 4: Property Geology Map. Source: Armstrong et al., 2010.

5.0 Exploration History

The first gold discovery in the area of the Property was made between 1916 and 1918 when a gold-bearing boulder was discovered south of the Main Narrows of Kenogamisis Lake. In 1931, W.W. “Hard Rock” Smith discovered gold-bearing quartz stringers near the location of the Hard Rock Number One Shaft and Tom Johnson and Robert Wells discovered gold on Magnet Lake, which later hosted the Bankfield Gold Mine. Soon to follow was the discovery of gold by T. A. Johnson and T. Oklend in a small quartz vein along the southern shore of Barton Bay on Kenogamisis Lake which is now the location of the Little Long Lac Property.

In 1934, the period of mine production in the area began with the Little Long Lac Mine, which was the first successfully producing mine in the area. To the west of the 1931 Hard Rock discovery, F. MacLeod and A. Cockshutt staked claims and continually explored the area throughout the 1930’s and 1940’s. By the late 1940’s the F Zone, a low-grade, large-tonnage orebody in greywacke, was identified on both the MacLeod-Cockshutt and Hard Rock Properties.

1933-34: Diamond-drilling at Bankfield Mine site done by the Sudbury Diamond Drilling Company.

1934: Key Lake Mine site staked and shaft sunk.

1935: Surface trenching was performed at McLellan Mine site along with and a number of holes drilled by Longacre Longlac Gold Mines Ltd. 1936: Drill program completed (29 holes totaling 1657.2 m).

In 1936: Magnet Consolidated Mines Ltd formed from the merger of Magnet Lake Gold Mines and Wells Longlac Mines Ltd.

Production on the Mosher Long Lac Mine (located west of, and immediately down plunge of the same mineralized zones exploited in the MacLeod-Cockshutt Mine) began in 1962, then in 1967, the MacLeod-Cockshutt, Mosher and Hard Rock mines amalgamated and remained in production until 1970. The consolidated Hard Rock, MacLeod-Cockshutt and Mosher Mines had produced 2,075,074 ounces of gold at an average grade of approximately 0.14 ounces of gold per ton (~13M tones @ 4.9 g/t Au) in the period from 1934 to 1970.

Mining halted at Key Lake Mine in 1940, McLellan Mine and Bankfield Mine in 1942, Magnet Mine in 1951, Little Longlac mine in 1956 and Macleod-Cockshut/Mosher in 1970.

In the 1980’s, Lac Minerals Ltd. reviewed the remaining underground reserves and conducted ground geophysical work and diamond drilling to target areas with open-pit potential.

1990: Roxmark Mines Ltd. acquired interest in the Bankfield Mine property and conducted a tailings prefeasibility study. This indicated a resource of 421,631 tons averaging 0.044 opt gold

In 1992, Asarco Exploration Company of Canada Limited entered into an agreement with Lac Minerals Ltd. In 1993 and 1994, Asarco conducted various types of drilling to evaluate potential of the near surface portion of the F Zone. Subsequently, Cyprus Canada Inc. signed various agreements with Lac Minerals Ltd and Roxmark Mines Ltd. to earn interest in and acquire ground in the area. Cyprus then drilled 25 holes in 1996 and 1997 to help in better understanding and assessing the open-pit potential on the Property.

In 2007, Premier (GGM) began signing various agreements to gain interest in the property and soon after began exploration drilling on the property which continues today.

6.0 Work dispersion over individual claims

The work conducted for the completion of the IP survey include: line cutting, grid picketing and the IP surveying. Expenditures associated with the work is applied as a cost per kilometer. Only portions of line that crossed GGM owned claims have been summarized in this report.

The distribution of expenditure is outlined in the tables below:

Little Long Lac Mine

Claim #	LLL1 (m)	LLL2 (m)	Total Length (m)	Line Cutting Cost ~\$1000/km	IP Survey Costs \$2271/km	Line survey RTK ~\$150/lm
TB10556	444.46	0	444.46	\$ 444.46	\$ 1,009.37	\$ 66.67
TB10559	0	67.84	67.84	\$ 67.84	\$ 154.06	\$ 10.18
TB10560	384.82	357.75	742.57	\$ 742.57	\$ 1,686.38	\$ 111.39
TB10561	0	164.99	164.99	\$ 164.99	\$ 374.69	\$ 24.75
TB10562	0	341.09	341.09	\$ 341.09	\$ 774.62	\$ 51.16
TB10566	15.64	0	15.64	\$ 15.64	\$ 35.52	\$ 2.35
TB10887	251.34	0	251.34	\$ 251.34	\$ 570.79	\$ 37.70
TB10565	167.36	533.37	700.73	\$ 700.73	\$ 1,591.36	\$ 105.11
TB10570	316.94	0	316.94	\$ 316.94	\$ 719.77	\$ 47.54
Total Length	1580.56	1465.04	3045.6	\$ 3,045.60	\$ 6,916.56	\$ 456.84
					Grand total	\$ 10,419.00

McLellan Mine

Claim #	MCL1 (m)	MCL2 (m)	Total Length (m)	Line Cutting Cost ~\$1000/km	IP Survey Costs \$2271/km	Line survey RTK ~\$150/lm
TB10769	467.95	452.97	920.92	\$ 920.92	\$ 2,091.41	\$ 138.14
TB10716	469.44	151.96	621.4	\$ 621.40	\$ 1,411.20	\$ 93.21
TB10717	0	248.9	248.9	\$ 248.90	\$ 565.25	\$ 37.34
4221442	105.45	136.36	241.81	\$ 241.81	\$ 549.15	\$ 36.27
TB10686	102.09	149.8	251.89	\$ 251.89	\$ 572.04	\$ 37.78
TB10685	438.71	199.03	637.74	\$ 637.74	\$ 1,448.31	\$ 95.66
TB10684	0	240.71	240.71	\$ 240.71	\$ 546.65	\$ 36.11
CLM203	417.08	408.42	825.5	\$ 825.50	\$ 1,874.71	\$ 123.83
TB113162	450.87	0	450.87	\$ 450.87	\$ 1,023.93	\$ 67.63
TB10953	0	439.18	439.18	\$ 439.18	\$ 997.38	\$ 65.88
TB113161	221.82	0	221.82	\$ 221.82	\$ 503.75	\$ 33.27
TB10954	185.8	381.69	567.49	\$ 567.49	\$ 1,288.77	\$ 85.12
TB10599	0	36.12	36.12	\$ 36.12	\$ 82.03	\$ 5.42
TB10955	407.54	0	407.54	\$ 407.54	\$ 925.52	\$ 61.13
TB10600	0	414.52	414.52	\$ 414.52	\$ 941.37	\$ 62.18
TB10956	273.91	0	273.91	\$ 273.91	\$ 622.05	\$ 41.09
TB10846	72.48	395.32	467.8	\$ 467.80	\$ 1,062.37	\$ 70.17
Total Length	3613.14	3654.98	7268.12	\$ 7,268.12	\$ 16,505.90	\$ 1,090.22
					Grand total	\$ 24,864.24

Magnet Mine						
Claim #	MG1 (m)	MG2 (m)	Total Length (m)	Drilling Cost ~\$1/m	Survey Costs ~\$22/m	Survey RTK ~\$1/m
3005010	596.58	534.37	1130.95	\$ 1,889.20	\$ 2,568.39	\$ 169.64
TB10302	331.73	0	331.73	\$ 753.36	\$ 753.36	\$ 49.76
TB861858	66.26	0	66.26	\$ 150.48	\$ 150.48	\$ 9.94
TB519305	247.72	0	247.72	\$ 562.57	\$ 562.57	\$ 37.16
TB10573 (encompasses TB861858 & TB519305)	454.88	0	454.88	\$ 1,033.03	\$ 1,033.03	\$ 68.23
TB10572	388.28	0	388.28	\$ 881.78	\$ 881.78	\$ 58.24
TB10397	162.57	0	162.57	\$ 369.20	\$ 369.20	\$ 24.39
TB10396	450.02	292.29	742.31	\$ 1,314.29	\$ 1,685.79	\$ 111.35
TB11641	206.54	203.98	410.52	\$ 673.03	\$ 932.29	\$ 61.58
TB513730	0	428.36	428.36	\$ 428.36	\$ 972.81	\$ 64.25
TB10398 (encompasses TB10306 & TB513730)	0	473.21	473.21	\$ 473.21	\$ 1,074.66	\$ 70.98
TB519306	0	237.87	237.87	\$ 237.87	\$ 540.20	\$ 35.68
TB10397	0	421.29	421.29	\$ 421.29	\$ 956.75	\$ 63.19
TB10400	0	153.61	153.61	\$ 153.61	\$ 348.85	\$ 23.04
TB10399	0	172.57	172.57	\$ 172.57	\$ 391.91	\$ 25.89
Total Length	2904.58	2917.55	5822.13	\$ 9,513.85	\$ 13,222.06	\$ 873.32
					Grand total	\$ 23,609.23

Bankfield Mine						
Claim #	BF1 (m)	BF2 (m)	Total Length (m)	Line Cutting Cost ~\$1000/km	IP Survey Costs \$2271/km	Line survey RTK ~\$150/lm
TB20029	398.4	215.54	613.94	\$ 1,120.31	\$ 1,394.26	\$ 92.09
TB10225	273.72	0	273.72	\$ 621.62	\$ 621.62	\$ 41.06
TB10214	144	401.96	545.96	\$ 728.98	\$ 1,239.88	\$ 81.89
TB10213	500.07	535.74	1035.81	\$ 1,671.40	\$ 2,352.32	\$ 155.37
TB10212	365.51	276.37	641.88	\$ 1,106.44	\$ 1,457.71	\$ 96.28
TB10199	0	73.95	73.95	\$ 73.95	\$ 167.94	\$ 11.09
TB10211	419.32	0	419.32	\$ 952.28	\$ 952.28	\$ 62.90
TB10200	0	432.7	432.7	\$ 432.70	\$ 982.66	\$ 64.91
3005010	0	196.72	196.72	\$ 196.72	\$ 446.75	\$ 29.51
Total Length	2101.02	2132.98	4234	\$ 6,904.40	\$ 9,615.41	\$ 635.10
					Grand total	\$17,154.91

Bankfield West						
Claim #	BFW1 (m)	BFW2 (m)	Total Length (m)	Line Cutting Cost ~\$1000/km	IP Survey Costs \$2271/km	Line survey RTK ~\$150/lm
TB547813	422.86	25.8	448.66	\$ 986.12	\$ 1,018.91	\$ 67.30
TB547808	34.73	0	34.73	\$ 78.87	\$ 78.87	\$ 5.21
TB547809	253.07	193.55	446.62	\$ 768.27	\$ 1,014.27	\$ 66.99
TB547730	444.23	0	444.23	\$ 1,008.85	\$ 1,008.85	\$ 66.63
TB547727	99.59	0	99.59	\$ 226.17	\$ 226.17	\$ 14.94
TB547728	419.64	461.75	881.39	\$ 1,414.75	\$ 2,001.64	\$ 132.21
TB12147	291.07	23.25	314.32	\$ 684.27	\$ 713.82	\$ 47.15
TB12148	236.89	0	236.89	\$ 537.98	\$ 537.98	\$ 35.53
TB547812	0	428.63	428.63	\$ 428.63	\$ 973.42	\$ 64.29
TB547810	0	53.43	53.43	\$ 53.43	\$ 121.34	\$ 8.01
TB547729	0	465.08	465.08	\$ 465.08	\$ 1,056.20	\$ 69.76
Total Length	2202.08	1651.49	3853.57	\$ 6,652.41	\$ 8,751.46	\$ 578.04
					Grand total	\$15,981.91

7.0 Grid line cutting and picketing

24.2km of grid line cutting was completed by A-star Prospecting, Michael Goodman (Crew) and GGM employees for all lines IP surveyed.

Equipment used includes:

- Chainsaw
- Chaining
- Axes
- Handheld GPS

A-star - Cost for line cutting per kilometer = \$1110

Michael Goodman -Cost for line cutting per kilometer = \$904

GGM– cost of line cutting per kilometer = \$1000

Average Total Cost - \$1000

8.0 2016 Induced polarization survey

See appendix 2 for full report and appendix 3 for pseudo-sections and inversions

Cost for IP survey per kilometer = \$2771

All lines were surveyed by GGM staff with Trimble R6 RTK equipment following the IP survey. Total of 15 Man days (\$250/man day)

Cost for line cutting per kilometer = \$150

9.0 Conclusions and Recommendations

See Appendix C.

10.0 References

- Buck, S., and Williams, H.R., 1984: Structural studies in the Geraldton area; in Summary of Field Work 1984, Ontario Geological Survey, Miscellaneous Paper 119, p.208-211.
- Fenelon, R. 1997: 1996 Final Report, Lac Properties Inc. Geraldton Property. In-house report, Premier Gold Mines Limited.
- Ferguson, S.A., Groen, H.A., and Haynes, R. 1971: Gold Deposits of Ontario: Part1, Districts of Algoma, Cochrane, Kenora, Rainy River and Thunder Bay; Ontario Department of Mines, MRC 13, 315 p.
- Horwood, H. C. and Pye, E. G. 1951: Geology of Ashmore Township, Ontario Department of Mines, Vol. LX, Part V, 1951.
- Lafrance, B., DeWolfe, J.C. and Stott, G.M. 2004: A structural reappraisal of the Beardmore-Geraldton belt at the southern boundary of the Wabigoon Subprovince, Ontario, and implications for gold mineralization; Canadian Journal of Earth Sciences, v.41, p.217- 235.
- Macdonald, A. J. 1983: Iron Formation-Gold Association: Evidence from Geraldton Area; p. 75- 82 in The Geology of Gold in Ontario, edited by A. C. Colvine, Ontario Geological Survey, Miscellaneous Paper 110, 278p.
- Macdonald, A. J. 1988: The Geraldton Gold Camp: The Role of Banded Iron Formation; Ontario Geological Survey, Open File Report 5694, 173p., 93 figures, 5 tables and 1 map in back pocket.
- Mason, J. and White, G. 1986: Gold Occurrences, Prospects, and Deposits of the Beardmore-Geraldton Area, Districts of Thunder Bay and Cochrane; Ontario Geological Survey, Open File Report 5630, 680p., 21 figures, 11 tables and 1 map in back pocket.
- Pye, E. G. 1951: Geology of Errington Township, Little Long Lac Area, Ontario Department of Mines, Vol. LX, Part VI, 1951.
- Reddick, J., Srivastava, M., and Armstrong, T. 2010. Technical Report on the Resource Estimates for the Hard Rock Area, Hardrock Property, Northern Ontario. Prepared for Premier Gold Mines Limited.
- Speed, A. A. and Craig, S. 1992: Beardmore-Geraldton historical research project; Ontario Geological Survey, Open File Report 5823, 283p.

Appendices

Appendix A
Tenure Map

Appendix B
IP Survey Lines

GREENSTONE GOLD MINES

Greenstone Gold Mines
IP Grid Lines

Rivers

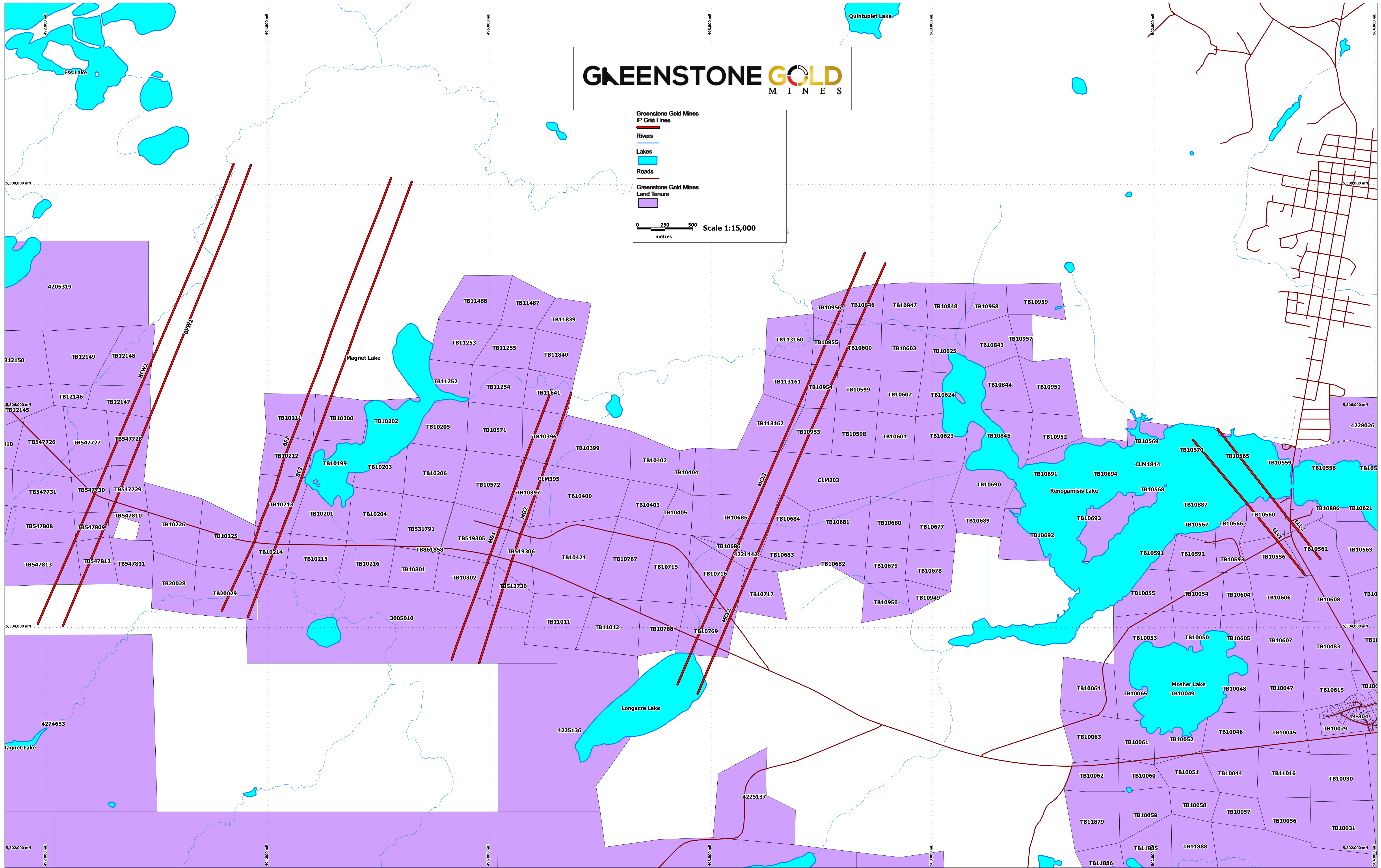
Lakes

Roads

Greenstone Gold Mines
Land Tenure

0 250 500 metres

Scale 1:15,000



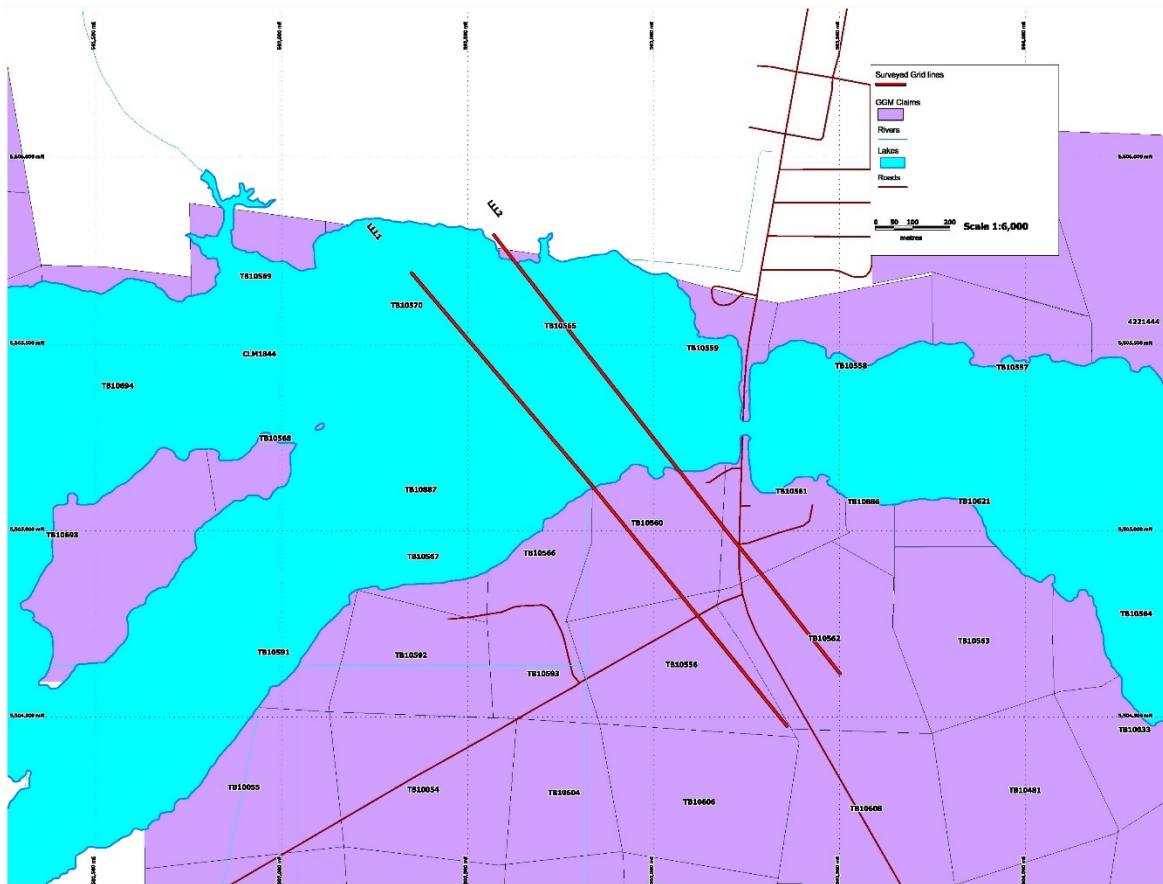
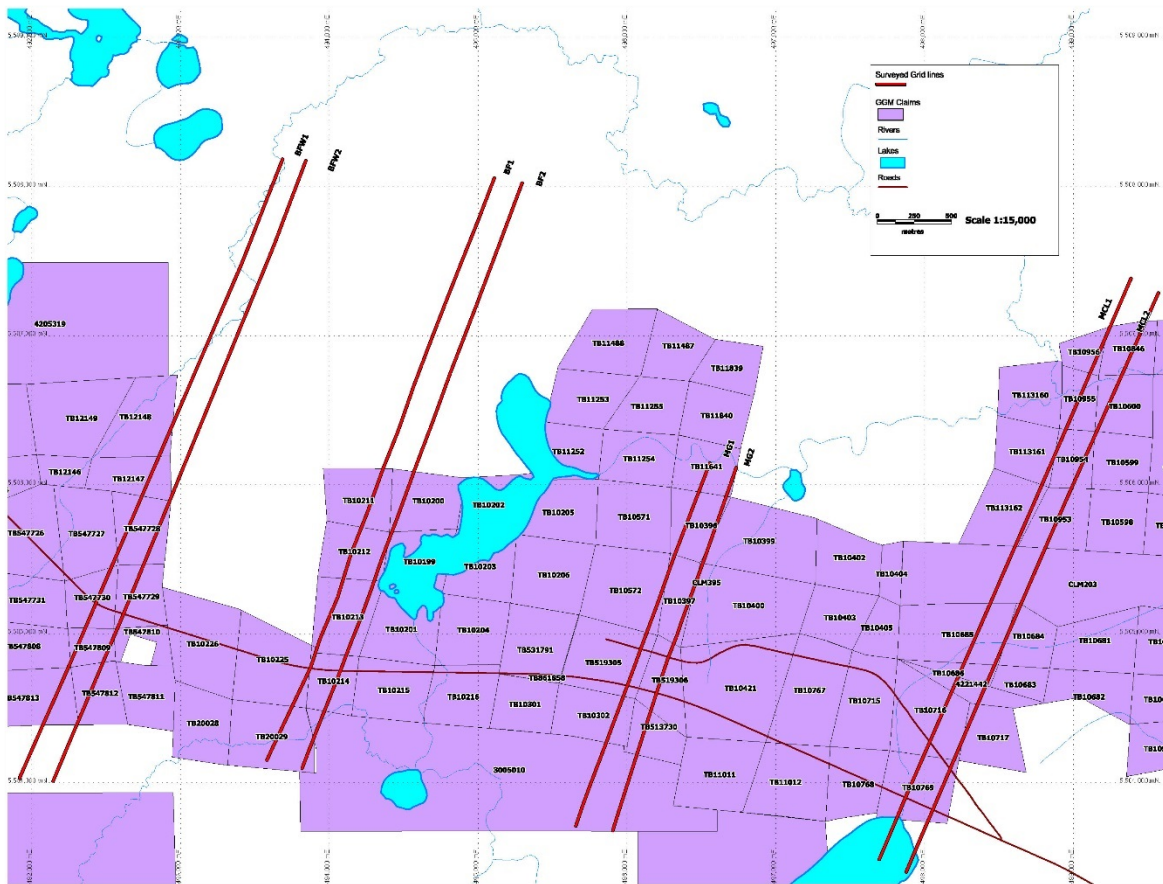


Figure 5 - Little Longlac Mine Lines



IP Survey Grid Lines of Greenstone Gold Mines

Figure 6 - McLellan Mine, Magnet Mine, Bankfield Mine, Bankfield West lines

Appendix C
Clearview Geophysics Induced Polarization Survey Report

**Report on Spectral IP Surveys at the
Kenogamisis Claim Block
Phase 2
Geraldton Area, Ontario**

March & April 2016



ClearView Geophysics Inc.

Report On Spectral IP Surveys at the
Kenogamisis Claim Block
Phase 2
Geraldton Area, Ontario

On behalf of:

Greenstone Gold Mines
135 Hardrock Road
PO Box 69
Geraldton, Ontario
P0T 1M0

telephone: (807) 854-0995 facsimile: (807) 854-2750
E-mail: ben.cleland@ggmines.com

Contact: Mr. Ben Cleland, Manager of Geology

By:

ClearView Geophysics Inc.
12 Twisted Oak Street
Brampton, Ontario
L6R 1T1

telephone: 905.458.1883
facsimile: 905.792.1884
cellular: 416.617.1884

E-mail: joe.mihelcic@geophysics.ca

Contact: Mr. Joe Mihelcic, Geophysicist

ClearView Ref: U0206

TABLE of CONTENTS

1.	INTRODUCTION -----		1
2.	LOCATION & ACCESS-----		1
3.	PERSONNEL -----		2
4.	SURVEY SPECIFICATIONS & EQUIPMENT -----		3
5.	SURVEY METHODOLOGY -----		4
6.	DATA PROCESSING AND PRESENTATION -----		5
6.1	IP Surveys-----		5
6.2	Spectral IP -----		-5
7.	PROBLEMS AND LOGISTICAL ISSUES -----		7
8.	DISCUSSION OF RESULTS -----		8
8.1	LLL1 and LLL2 -----		-8
8.2	MCL1 and MCL2 -----		-9
8.3	MG1 and MG2-----		10
8.4	BF1 and BF2 -----		11
8.5	BFW1 and BFW2 -----		11
9.	CONCLUSIONS -----		13
10.	STATEMENT OF QUALIFICATIONS, JOE MIHELIC-----		14

APPENDIX A – Instrument Specifications

APPENDIX B – Plates

List of FIGURES:

Figure 1: Location Map.....	1
Figure 2: Claims Map.....	2

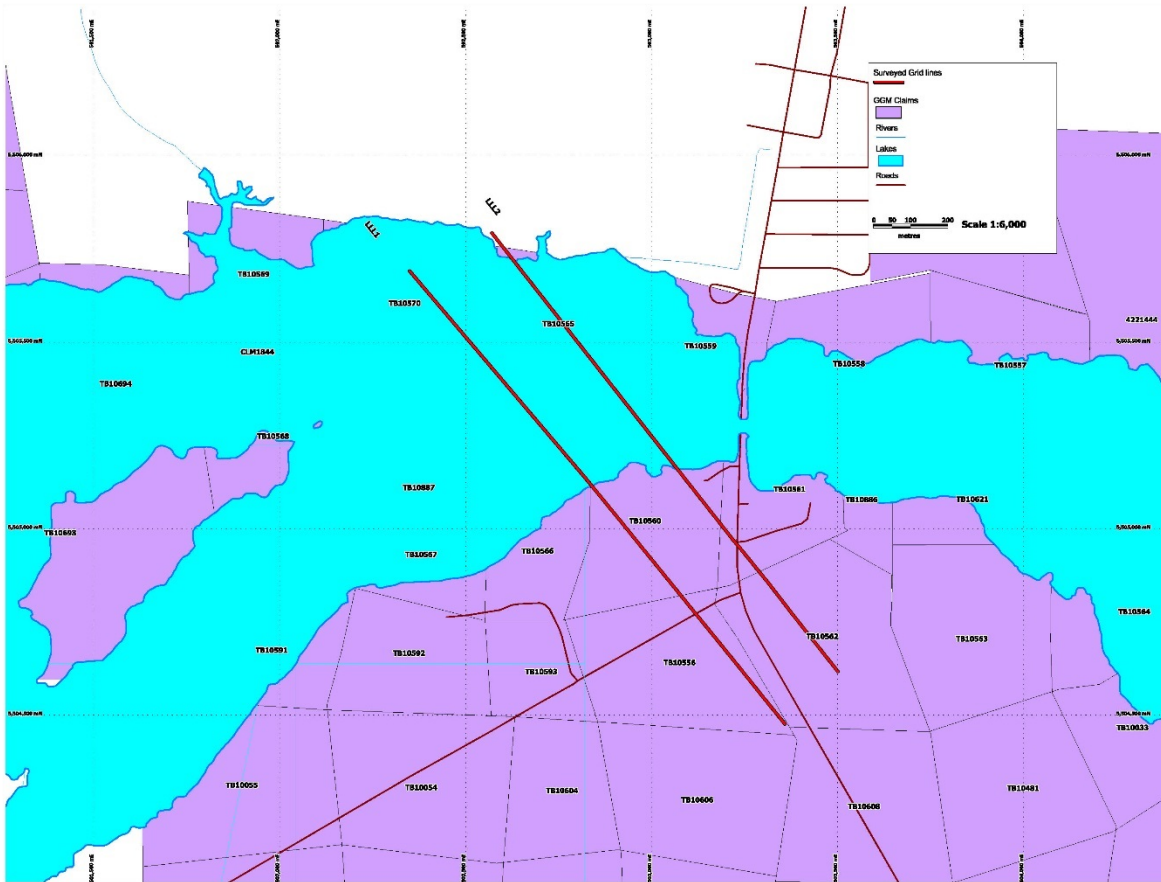
List of TABLES:

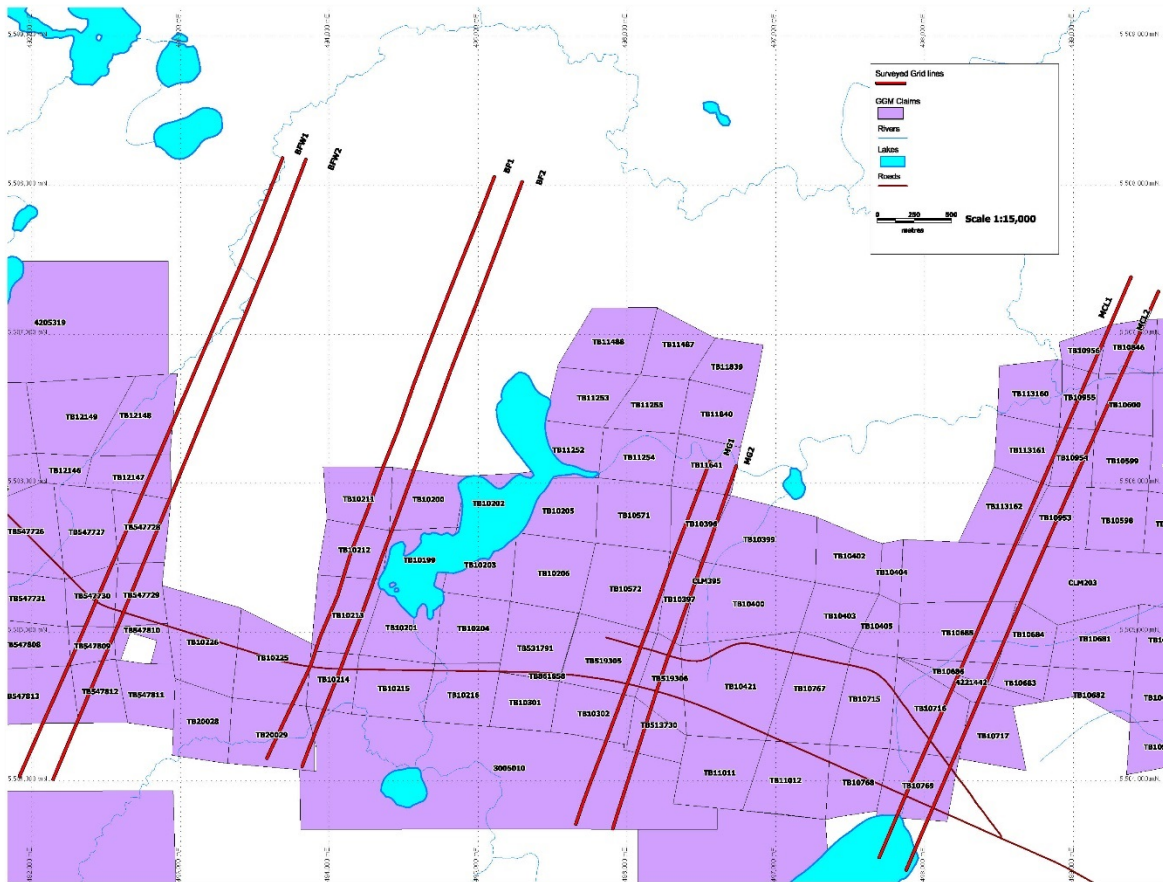
Table 1: Production Report 3
 Table 2: Instrumentation and Array 4

List of Plates:

Scale: 1:5000

Plate





IP Survey Grid Lines of Greenstone Gold Mines

1 & Plate 2: LLL1 & LLL2, Pseudos, UBC Inversions, Spectral, Magnetics, Fld notes. Plate 3 & Plate 4: MCL1 & MCL2, Pseudos, UBC Inversions, Spectral, Magnetics, Fld notes. Plate 5 & Plate 6: MG1 & MG2, Pseudos, UBC Inversions, Spectral, Magnetics, Fld notes. Plate 7 & Plate 8: BF1 & BF2, Pseudos, UBC Inversions, Spectral, Magnetics, Fld notes. Plate 9 & Plate 10: BFW1 & BFW2, Pseudos, UBC Inversions, Spectral, Magnetics, Fld notes.

1. INTRODUCTION

ClearView Geophysics Inc. carried out Spectral IP (Induced Polarization) Surveys for Greenstone Gold Mines on their Phase 2 Kenogamisis Claim Block located near Geraldton, Ontario. The work was completed in March and April 2016 to develop a geophysical signature for gold mineralization across five (5) historic mine sites within the project area.

2. LOCATION & ACCESS

Access to the project area is from Highway 11 which runs across most of the survey lines as indicated in Figure 1 supplied by the client. The base of operations for the crew was a client supplied house located on Sunset Drive immediately north of Highway 11 and west of Michael Power Blvd. Daily access to the survey area was by truck.

Figure 1: Location Map

3. PERSONNEL

Albert Vickers; Geophysicist/Party Chief:

Mr. Vickers operated the IP receiver. He was responsible for the field surveys and data quality. He also edited the data.

Valery Kungurov; Geophysicist:

Mr. Kungurov operated the IP transmitter.

Michael Tremblay; Technician:

Mr. Tremblay moved and installed the transmitter current rods. He also assisted to reel-up and moved the current wire along the survey lines and across the grid.

Aaron Dunn; Technician:

Mr. Dunn assisted with operations along the survey line such as connecting electrodes and moving IP rods along the line.

The client supplied four (4) field assistants. Mr. Joe Mihelcic, Geophysicist, provided overall supervision of the project, processed the data and prepared this report.

4. SURVEY SPECIFICATIONS & EQUIPMENT

The following tables summarize the survey specifications and equipment:

Table 1: Production Report

Date	Task or Line	Station From	Station to	Distance (m)	Comments
March 24	Mobilize				Albert/Aaron arrive Brampton
March 25	Mobilize				Albert/Aaron load gear
March 26	Mobilize				Albert/Aaron/Valery to KL for gear
March 27	Mobilize				Albert/Aaron/Valery/Mike to Geraldton
March 28	LLL1	0	400	400	IP Survey: 400m
March 29	LLL1	400	1550	1150	IP Survey: 1650m
	LLL2	0	500	500	
March 30	LLL2	500	1500	1000	IP Survey: rain, 1000m
(March 31	5845E	2000	150	1850	IP Survey: 1850m): Phase 1– not included in this report.
April 1	MCL1	0	1400	1400	IP Survey: 1400m
April 2	MCL1	1400	3550	2150	IP Survey: 2150m
April 3	MCL1	3550	4200	650	IP Survey: 1200m
	MCL2	0	550	550	
April 4	MCL2	550	2600	2050	IP Survey: 2050m
April 5	MCL2	2600	4200	1600	IP Survey: 1600m
April 6	MG1	0	1750	1750	IP Survey: 1750m
April 7	MG1	1750	2550	800	IP Survey: 1850m
	MG2	0	1050	1050	
April 8	MG2	1050	2600	1550	IP Survey: 1550m
April 9	BF1	0	1900	1900	IP Survey: 1900m
April 10	BF1	1900	4200	2300	IP Survey: 2300m
April 11	BF2	0	900	900	IP Survey/Weather Standby: 900m, rain/snow cause Rx lock-up
April 12	BF2	900	2950	2050	IP Survey: 2050m
April 13	BF2	3000	4200	1200	IP Survey: 1200m
April 14	BFW2	0	2100	2100	IP Survey: 2100m
April 15	BFW2	2100	3650	1550	IP Survey: 1550m
April 16	BFW2	3650	4500	850	IP Survey: 2000m
	BFW1	3150	4300	1150	
April 17					Weather Day, move wires
April 18	BFW1	0	1050	1050	IP Survey: 1050m, setup new position AM
April 19	BFW1	1050	3100	2050	IP Survey: 2050m
April 20					Crew Demob
			Total IP:	33 750 m	

Table 2: Instrumentation and Array

Refer to Appendix A Instrument Specifications.

Pole-Dipole Array domain Transmitter	n=1-8, "a"=50 m; dipole-dipole Receiver Walcer 10 kW	Scintrex IPR12, time
---	---	----------------------

5. SURVEY METHODOLOGY

The IP Survey consisted of injecting an electrical current into the ground for two seconds. The transmitter current was then turned off for two seconds, during which time an IP receiver recorded the decaying voltage at pre-defined intervals.

The dipole-dipole array consists of two current electrodes located 50 metres and 100 metres south of the first receiver electrode (P1). For eight dipoles, there are nine receiver electrodes. The potential electrode located nearest the transmitter current electrodes is called "P1". The furthest electrode down the line is called "P9". Electrode pairs are called dipoles. Eight dipoles were read for the entire line except at the end where dipoles were dropped as the current electrodes continued to move south.

Voltage drops were measured for each dipole. The transmitter operator measured the contact resistance and electric current passing through the current electrodes during the readings. These current measurements were relayed to the receiver operator and entered into the IPR12 instrument for subsequent apparent resistivity calculations. As the dipoles increased in distance from the transmitter current electrode, they obtained decay information from deeper features. Therefore, the results are displayed as "pseudosections" (Appendix B, Plate 1 through Plate 10).

The transmitter operator typically writes down field notes relayed by the line workers. In this case, the field notes were recorded by the Party Chief at the receiver. These notes are related to topography and obstacles encountered along the survey line (e.g., gas-line, swamps) that could be relevant to data interpretation.

6. DATA PROCESSING AND PRESENTATION

6.1 IP SURVEYS

The Scintrex IPR12 receiver was preset to record the Mx chargeability gate between 50 ms and 1760ms for LLL1 and LLL2 and 690 ms and 1050 ms for the remaining survey lines. The former was chosen by the Party Chief to average over a broader window in the area of infrastructure. The latter setting of 690 ms and 1050 ms is the standard “M7” or “slice 8” from the predecessor Scintrex IPR11 receiver and typically used by ClearView on all projects. The IP Survey data were downloaded to a laptop computer at the completion of each field day. The Scintrex format data were renamed to <*.i12> and edited. Repeat readings were kept and spurious readings removed. The transmitter currents were verified and corrected where necessary using the recorded transmitter notes.

The edited <*.i12> data were then processed using in-house software, which converts the Scintrex format data to Geosoft and UBC inversion input formats. This in-house software also strips out user-selected dipoles that could be used to make plan maps. Plan maps were not prepared for this project because the survey grids were limited to 2 lines per site. For this survey, the n=2 dipole was stripped out. Plan maps were not prepared for this project because the survey grids were limited to 2 lines per site. Pseudosections were prepared and plotted for the Mx Chargeability and Apparent Resistivity data.

Final plots are presented in Appendix B in Plate 1 through Plate 10. They consist of the stacked pseudosections Mx, Apparent Resistivity, Spectral MIP, Tau, and c. Spectral is discussed in the next section of this report. The UBC2d inversions, magnetic profiles and field notes are also stacked on these maps.

The magnetic profiles are stripped from 2008 Terraquest survey data using in-house software. The magnetic field TF3FNL is described by Terraquest as: Levelled, Compensated Total Magnetic Intensity - Tail Sensor (nT).

The UBC inversion parameters used a ‘chi factor’ of 10 for the apparent resistivity data, and a ‘chi factor’ of 0.7 for the chargeability data. These provided stable inversion depths to approximately 175 metres deep.

6.2 SPECTRAL IP

Spectral data for Tau, M-IP and ‘c’ were calculated and presented for the IP data. They are calculated from a modified version of Scintrex’ Spectrum software. This software matches the IP data to a suite of master curves. Readings with poor matches are screened and not plotted.

Detailed information about Spectral IP can be found in the following technical paper: Geophysics, Vol. 49, No. 11, (November 1984), P. 1993-2003 “Spectral induced polarization parameters as determined through time-domain measurements”. A brief description of Spectral IP follows:

The spectral parameters calculated from the IPR12 data provide an increased dimension to IP interpretation. The time constant Tau and exponent c are measurable physical properties which describe the shape of the decay curve. Tau can be used to discriminate between fine and coarse-grained polarizable mineralization. For a 2-second pulse, it ranges between 0.01 s for fine-grained sulphides, to 100 s for coarse-grained sulphides. Tau is important in gold exploration as gold is often associated with fine-grained sulphide mineralization. In rare cases, gold can be associated with coarse-grained mineralization, and therefore medium to long Tau.

Spectral Tau is a useful signature parameter for helping to correlate anomalies that likely originate from the same geologic source. For example, anomalies with different Tau values likely belong to separate zones.

Exponent c is diagnostic of the uniformity of the grain size of the target. It ranges from 0.1 for non-uniform grain size to 0.8 for uniform grain size and 1.0 for inductive coupling effects. Low c means that there is less certainty to the calculated M-IP and Tau values because there are likely multiple chargeable sources contributing to the response. The Cole-Cole models are based on theoretical decay curves for a uniform source.

The M-IP is the relative residual voltage that would be seen immediately after the shut-off of the transmitted pulse. It is expressed as mV/V and its amplitude relates to the quantity of the polarizable mineralization.

M-IP parameter is very useful because theoretically it is not affected by ground resistivity. Normally, low resistivity tends to suppress the measured (apparent) chargeability decreasing its amplitude. A problem in areas of very high resistivity is that the apparent chargeability moves sympathetically with high resistivities. Therefore, when a high chargeability anomaly correlates with a resistivity high, it is impossible to know when the anomaly is solely caused by sulphides unless the M-IP parameter is used.

The M-IP parameter allows for the selection of chargeability anomalies associated with resistivities that have a high probability to be associated with sulphides. In gold exploration this is very important because highly silicified areas are usually associated with gold mineralization. However, sulphide zones are the most favourable gold exploration targets within the zone of silicification.

The procedure for determining the spectral parameters plotted on the pseudosections is the result of Cole-Cole model curve matching. Matches that have a poor RMS standard deviation fit are not plotted. Poor fits to the model curves can result from inductive coupling, which is usually seen in the early decay slices, lack of significantly chargeable response, or noisy readings.

7. PROBLEMS AND LOGISTICAL ISSUES

The survey lines crossed lakes, creeks/brooks, swamps, thick woods, residential areas, powerlines, gas lines and the Trans-Canada Hwy 11. The lakes, creeks/brooks, and swamps were not a major problem because the ground/water was frozen. The wires were kept separated rather than bundled. When wires are bundled (i.e., 'snake') they can move along the survey lines without getting snagged on the cut vegetation. However, using a 'snake' across the highway would've required a protective sleeve such as a garden hose, since standard road crossing material was not permitted. The separated wires snagged frequently and slowed production. This was reduced as much as possible by keeping the wires untangled particularly at the ends.

A transmitter fault occurred at the outset due to the transmitter operator setting the tab at max with poor contact. This large impedance mismatch blew a rectifier board which was subsequently replaced with an on-site spare.

The distance between the grid pickets was not constant in some areas. This was possibly a result of chaining by hand-held GPS. The errors were smoothed out where possible by adjusting the electrode locations.

In some areas pickets were moved by the local residents where survey lines such as LLL1 and LLL2 cut through residential areas. Approximately 450 metres of new wire was damaged by a local resident.

Wet conditions due to melting snow and water over lake ice also made it difficult to keep readings clean. Extra readings and keeping the wire above the ground where possible helped to minimize the effects of wet conditions.

Cultural noise resulted from grounded power line poles and guide wires, buried pipes and utilities, and former structures and mine workings. These were noted where possible and plotted on the top panel of the plates presented in Appendix B to assist with the interpretation of the geophysical data.

8. DISCUSSION OF RESULTS

A number of chargeability anomalies are interpreted and indicated immediately above the Mx chargeability pseudosections on Plate 1 through Plate 10. The relative strength of the anomalies are given in the following list:

Very weak ----- < 5 mV/V

Weak ----- 5 mV/V to 10 mV/V

Moderately Strong ----- 10 mV/V to 15 mV/V

Strong ----- 15 mV/V to 25 mV/V

Very Strong ----- > 25 mV/V

The UBC inversions were carried out with a chi factor of 10 for the apparent resistivity and 0.7 for the chargeability. The values of 10 for apparent resistivity was chosen to more accurately match the observed amplitudes to the model amplitudes. The value of 0.7 for the chargeability was chosen to provide higher resolution and more defined contacts and tighter results.

A brief discussion of each anomaly follows.

8.1 LLL1 AND LLL2

The Mx chargeability values are for the 50 ms to 1760 ms time gate. Anomalies A through F are indicated on Plate 1 and Plate 2 in Appendix B.

Anomaly A (1200N-1300N) corresponds to a strong chargeability anomaly on LLL1 and weak on LLL2. Spectral values are high MIP and short Tau. The apparent resistivity is broad and low resistivity to approximately 50 metres deep where the bulk of the chargeability is located. Anomaly A is located on the northern flank of a magnetic high zone. A 'dacitic porphyry' contact is located in the vicinity of A. Anomaly A could result from fine-grained or disseminated sulphide mineralization likely associated with a major geologic contact.

Anomaly B (900N-950N) is a very weak near surface anomaly that inversion models to strong at 50 metres depth. The apparent resistivity is uniformly low over high across the area as was the case for anomaly A. However, the spectral values for B are poorly defined. The magnetic profile is generally high to the north of B. This anomaly could result from minor sulphides near surface to higher quantities at greater depths.

Anomaly C (700N) is a moderately strong chargeability anomaly peaking at approximately 75 metres deep. Spectral MIP and Tau are very high and mixed but predominantly long respectively. The apparent resistivity data indicate a change to low values likely associated to the noted 'Main Zone' and 'LLL Fault'. The magnetic data are relatively low in this area which is typical for a fault or alteration zone. This anomaly likely results from large amounts of mixed and coarse-grained sulphides.

Anomaly D (500N-600N) is a very strong chargeability anomaly immediately south of C. Spectral values MIP and Tau are similarly very high and mixed/long but less well defined. Interference from surface structures, historic workings and a power line could be present but generally the apparent resistivity indicates higher variability D which could indicate sulphides associated with altered and silicified rocks.

Anomaly E (400N-500N) is a near surface moderately strong chargeability anomaly on LLL1 and very strong on LLL2. This discrepancy could be the result of cultural interference previously noted. Spectral Tau is long indicating potentially coarse-grained sulphides. The apparent resistivity is more clearly high at E indicating the possibility of less altered and more silicified rocks.

Anomaly F (150N-200N) is a very weak to weak chargeability anomaly located on the north side of higher magnetics. This could indicate F is at a geologic contact. Apparent resistivity are generally flat over the area with low resistivity over higher resistivity. There is no spectral data for this anomaly which indicates it is poorly defined and could contain only minor sulphides.

8.2 MCL1 AND MCL2

The Mx chargeability values are for the 690 ms to 1050 ms time gate for these survey lines and the survey lines discussed in the following sections. Anomalies A through J are indicated on Plate 3 and Plate 4 in Appendix B.

Anomaly A (3850N-3900N) is a moderate to strong near surface chargeability anomaly. The corresponding apparent resistivity is generally high at A. Spectral MIP and Tau are moderately high and short respectively. This anomaly could result from moderate quantities of fine-grained or disseminated sulphides.

Anomaly B (3600N-3650N) is indicated as a poorly defined very weak anomaly. It inversion models at 75 metres deep. The associated spectral values are difficult to determine and therefore it is uncertain whether this anomaly is the result of minor sulphides.

Anomaly C (3300N-3500N) is a broad weak chargeability anomaly. The corresponding apparent resistivity is relatively low. Spectral MIP and Tau are moderately high and short respectively. This anomaly likely results from a broad area of fine-grained or disseminated sulphides in a less resistive rock or possibly alteration/fault zone.

Anomaly D (2900N-3000N) is a near surface anomaly that inversion models stronger beginning at 50m to 75m deep. It is defined with short Tau at 2900N on MCL1 and broader with mixed short and medium Tau between 2950N and 3000N on MCL2. Apparent resistivity values are low. The magnetics profile begins to climb higher towards the south. Anomaly D is likely at a geologic contact or fault that could contain fine- to medium- grained sulphides.

Anomaly E (2600N-2700N) is a very strong chargeability anomaly associated with low apparent resistivity. The anomaly peaks at approximately 75 metres deep. Spectral values are poorly defined but generally strong and long for MIP and Tau respectively. The magnetics peaks at E. This anomaly could result from coarse-grained or linked sulphides, possibly containing magnetic mineralization such as pyrrhotite.

Anomaly F (1800N-1900N) is a weak chargeability anomaly possibly dipping towards the south and associated with an apparent resistivity low zone. Spectral MIP and Tau are weak and short respectively which is typical for minor fine-grained sulphides.

Anomaly G (1350N-1700N) is defined by a pair of inversion modeled anomalies on MCL2 at 1550N less than 50m deep and at 1675N near surface. On MCL1 anomaly G is defined as a more continuous broad feature peaking from 50m to 75m deep between 1350N and 1600N. The magnetics profile peaks high on the south side of G. Spectral MIP is moderately high and Tau

is short indicating a broad zone of fine-grained sulphides possibly at the contact with more magnetic rocks to the south.

Anomaly H (900N-1100N MCL1, 1050N-1150N MCL2) is a weak anomaly near surface that appears to strengthen and broaden with depth. Spectral Tau is mixed but predominantly long on MCL1 but short on MCL2. This difference could be the result of a complex geologic source. However, the magnetic profiles for both lines in this area are generally of the same character. The apparent is mostly over 10k ohm-m which is typical for rocks containing quartz. Anomaly H could result from both fine- and coarse-grained sulphides within silicified rock.

Anomaly I (800N-900N) is a very strong well-defined chargeability anomaly with associated low apparent resistivity and high magnetics. A 3-phase powerline in the vicinity could cause interference at anomaly I. However, spectral Tau is generally short to medium over a broad area which indicates anomaly I likely results from a broad area of fine- to medium-grained sulphides. The high associated magnetics indicates more magnetic sulphides mineralization or rock types.

Anomaly J (425N MCL1, 550N MCL2) consists of a weak near surface chargeability anomaly that inversion model peaks almost 100 metres deep on MCL1 and less than 50 metres deep on MCL2. Grounded guide wires on MCL1 could be causing the near surface feature. The 'BF Fault' is located at anomaly J on MCL2 where the associated spectral MIP and Tau are weak and long respectively. The associated apparent resistivity immediately to the south is low which is expected at a fault zone. Anomaly J likely results from minor sulphides within or adjacent to the 'BF Fault'.

8.3 MG1 AND MG2

Anomalies A through D are indicated on Plate 5 and Plate 6 in Appendix B.

Anomaly A (2050N-2250N), B (1800N-1850N) and C (1400N-1525N) are very weak to weak chargeability anomalies. The magnetics and apparent resistivity are relatively flat through all three anomalies. Spectral MIP are weak and Tau are short where calculated. These anomalies could result from minor variations in rock types and/or minor sulphides.

Anomaly D (1150N-1200N) coincides with 'Magnet Mine'. The chargeability anomaly is moderately strong. Spectral MIP is moderately strong and Tau is long on MG1 and poorly defined on MG2. The anomaly is located on the southern flank of a broad magnetic high zone. The apparent resistivity is low over a broad area, typical of an alteration or fault zone. D could result from coarse-grained sulphides and/or interference from the former mining activities.

8.4 BF1 AND BF2

Anomalies A through I are indicated on Plate 7 and Plate 8 in Appendix B.

Anomaly A (3950-4050N) is a very weak, poorly defined chargeability anomaly located at a resistivity low zone. Spectral data are inconclusive. This zone could result from a zone of minor sulphides and/or the result chargeable altered mineralization within a fault.

Anomaly B (3300N-3500N) is a weak chargeability zone that inversion models at approximately 250m deep. Hwy 11/powerlines are located on the north side of B. Spectral Tau are short indicating disseminated or fine-grained sulphides.

Anomaly C (2650N-2800N) is a well-defined moderately strong anomaly that peaks at approximately 25 metres to 50 metres deep. It coincides with a resistivity low and magnetic high. Spectral Tau are short. Anomaly C likely results from fine-grained or disseminated sulphides with a magnetic component (e.g., pyrrhotite). The associated resistivity low could result from a fault zone.

Anomaly D (2100N), E (1900N) are very weak to weak poorly defined anomalies that corresponds with a more resistive rock. Anomaly D is less magnetic than anomaly E which coincides with a magnetic high zone. Spectral values are sparse but generally short Tau where calculated. These anomalies could result from minor disseminated sulphides.

Anomaly F (1600N-1700N) is a weak anomaly best seen on BF1 and poorly defined on BF2. The spectral MIP and Tau values are weak and long respectively. Anomaly F could result from minor coarse-grained or linked sulphides.

Anomaly G (1300N) is a weak near surface chargeability anomaly that appears to coincide with the `BFTB Fault`. The magnetics data are low at anomaly F which is typical at a fault zone. Spectral Tau is short and the apparent resistivity is low. Whether the chargeability response results from minor disseminated sulphides or chargeable soils (e.g., clay, altered minerals) is uncertain.

Anomaly H (1000N) is located at the `historic mining` area. Apparent resistivity values are generally variable high and low. Spectral Tau are long. Whether H results from coarse/linked-sulphides or interference from the former workings is uncertain.

Anomaly I (700N) is a very strong chargeability anomaly that corresponds to long spectral Tau, low apparent resistivity and Hwy 11/powerlines to the south. Anomaly I likely results from coarse-grained or linked sulphides that could be conductive.

8.5 BFW1 AND BFW2

Anomalies A through H are indicated on Plate 9 and Plate 10 in Appendix B.

Anomaly A (4000N-4100N) is a very weak chargeability anomaly with weak spectral MIP and short Tau. The anomaly peaks at approximately 50 metres deep under a swamp. It could result from minor fine-grained sulphides.

Anomaly B (3700N-3750N) is a weak near surface anomaly becoming moderately strong with depth. The corresponding apparent resistivity is generally low at BFW1 and borders on a resistivity high at BFW2. This could indicate a chargeable source that cross-cuts across the resistive sources. The corresponding magnetics is generally low. Spectral Tau values are generally medium to long which is typical of coarse- or linked-sulphides. A gas-line corresponds to the location of anomaly B on BFW1 but not on BFW2. Whether it interferes with the response on BFW1 is uncertain.

Anomaly C (3250N-3300N) is a moderately strong chargeability anomaly with corresponding low apparent resistivity. Anomaly C is located on the north flank of a magnetic high zone. The anomaly is at or near surface with the inversion showing peak response approximately 50 metres deep. Spectral MIP and Tau are moderately strong and short respectively indicating the potential for moderate quantities of fine grained sulphides.

Anomaly D (2500N-2550N) is a well-defined weak to moderately strong chargeability anomaly peaking approximately 25 metres deep. Spectral MIP and Tau are moderately strong and short respectively. The corresponding apparent resistivity and magnetics are low and high respectively. Anomaly D could result from fine-grained or disseminated sulphides possibly associated with a minor fault or alteration zone. The high magnetics could result from a magnetic geologic formation or from more magnetic sulphides within or associated with anomaly D.

Anomaly E (2350N) is a very weak poorly defined chargeability anomaly located on the south side of the magnetic high zone previously mentioned for anomaly D. The inversion model for BFW1 indicates the anomaly is steeply dipping to the north. Spectral Tau are poorly defined but generally short indicating the potential for minor fine-grained or disseminated sulphides.

Anomaly F (BFW2=1200N, BFW1=1350N) is a very strong long Tau anomaly that coincides with Hwy11/powerlines and the 'BFW Area'. The inversion indicates a near surface source that widens at depth. The corresponding apparent resistivity is generally low. Spectral MIP peak at greater than 500 mV/V. This anomaly likely results from moderate to high quantities of coarse-grained sulphides.

Anomaly G (BFW2=1000N, BFW1=1100N) is located on the south side of the 'BFW Area'. It is a weak poorly defined near surface anomaly with short Tau. It appears to coincide with high apparent resistivity. Anomaly G likely results from minor fine-grained or disseminated sulphides possibly associated with silicified rock. However, more resistive rocks can increase the background chargeability unrelated to sulphides.

Anomaly H (600N to south) consists of chargeability readings that are moderately strong on BFW1 and very weak on BFW2. The apparent resistivity are generally over 10ohm-m on BFW1 and less than 5k ohm-m on BFW2. The magnetics profile is flat throughout the anomaly H area. Spectral Tau are mostly short. This anomaly could result from a relatively broad area of fine-grained or disseminated sulphides within more resistive host rocks on BFW1 compared to on BFW2.

9. CONCLUSIONS

The IP survey detected a number of chargeability anomalies at each of the five test sites. Higher resolution ground magnetometer survey data can be used to complement the results. The combination of chargeability, apparent resistivity, magnetics, and spectral data were used to develop a geophysical signature at each of the anomalies discussed in this report. Described anomalies at economically favorable locations within the test areas can be used as templates to prioritize anomalies detected in similar geologic settings elsewhere within the project area.

If there are any questions about the surveys or this report, please do not hesitate to contact the undersigned.

Sincerely,

ClearView Geophysics Inc.

Per:



Joe Mihelcic, P.Eng., M.B.A. Geophysicist/President

10. STATEMENT OF QUALIFICATIONS, JOE MIHELICIC

I, Joe Mihelcic, Hereby certify that:

- 1) I am a geophysicist with business office at 12 Twisted Oak Street, Brampton, Ontario L6R 1T1.
- 2) I am the owner of ClearView Geophysics Inc., a company performing geophysical services.
- 3) I am a graduate of Queen's University in Applied Science, Geological Engineering (B.Sc. 1988) and of Ivey Business School (M.B.A. 1995).
- 4) I and ClearView Geophysics Inc. are registered and authorized to practice by Professional Engineers of Ontario (PEO) and NWT/Nunavut (NAPEG).
- 5) I have practiced my profession for 30 years.

Signed _____



Joe Mihelcic, P.Eng., M.B.A. Brampton, Ontario
May 10, 2016

APPENDIX A – Instrument Specifications

SCINTREX

IPR-12 Time Domain Induced Polarization/Resistivity Receiver

Brief Description

The IPR-12 Time Domain IP/Resistivity Receiver is principally used in exploration for precious and base metal mineral deposits. In addition, it is used in geoelectrical surveying for groundwater or geothermal resources, often to great depths. For these latter targets, the induced polarization measurements may be as useful as the high accuracy resistivity results since it often happens that geological materials have IP contrasts when resistivity differences are absent.

Due to its integrated, lightweight, micro-processor based design and its large, 16 line display screen, the IPR-12 is a remarkably powerful, yet easy to use instrument. A wide variety of alphanumeric and graphical information can be viewed by the operator during and after the taking of readings. Signals from up to eight potential dipoles can be measured simultaneously and recorded in solid-state memory along with automatically calculated parameters. Later, data can be output to a printer or a PC.

(direct or via modem) for profile logging into profiles and maps.

The IPR-12 is compatible with Scintrex: IPC, TSQ and VERA Transmitters, or others which output square waves with equal on and off periods and polarity changes each half cycle. The IPR-12 measures the primary voltage (V_p), self potential (SP) and time domain induced polarization (TDIP) characteristics of the received waveform. Resistivity, statistical and Cole-Cole parameters are calculated and recorded in memory with the measured data, time and location.

Scintrex has been active in induced polarization research, development, manufacturing, consulting and surveying for over thirty years. We offer a full range of instrumentation, accessories and training.



The IPR-12 Receiver measures up to eight dipoles simultaneously. It then records measured and calculated parameters in memory.

operator displays instrument status and measured data. The IPR-12 ensures that the operator obtains accurate data from field work.

The IPR-12 saves you time and money in carrying out field surveys. Its capacity to measure up to eight dipoles simultaneously is far more efficient than older receivers measuring a single dipole. This advantage is particularly valuable in drillhole logging where electrode movement time is minimal.

The built-in, solid-state memory records all information associated with a reading, dispensing with the need for any hand written notes. PC compatibility means rapid electronic transfer of data from the receiver to a computer for rapid data processing.

Taking a reading is simple and fast. Only a few keystrokes are needed since the IPR-12 features automatic circuit resistance checks, SP buckout and gain setting.

High Quality Data

One of the most important features of the IPR-12 is the large display screen which allows the operator easy real time access to graphic and

operator obtains accurate data from field work.

The number and relative widths of the IP decay curve windows have been carefully chosen to field the transient information required for proper interpretation of spectral IP data. Timings are selectable to permit a very wide range of responses to be measured.

The IPR-12 stacks the information for each cycle and calculates a running average for V_p , SP and each transient window. This enhancement is equivalent to a noise decrease of $1/\sqrt{N}$ or a transmitter power increase of N where N is the number of values averaged. Since values are measured each few seconds, it does not take long for this signal enhancement technique to have great effect.

The automatic SP program bucks out and corrects completely for Unear SP drift. Data are also kept noise free by: radio-frequency (RF) filters, low pass filters and standard spherical noise spike rejection.

To prevent mistripping, the IPR-12 does not accept trigger-line signals at inappropriate times.



The IPR-12 is fully portable and easy to use.

FEATURES

Eight Dipoles Simultaneously

The analog input section of the IPR 12 contains eight identical differential inputs to accept signals from up to eight individual potential dipoles. Any dipole can be disabled. The amplified analog signals are converted to digital form by a high resolution A/D converter and recorded with other pertinent information identifying each group of dipoles.

Large Backlit Display

The 16 line by 40 character backlit Super Twist Liquid Crystal Display (LCD) enhances the operator's understanding of the status and the accuracy of the measured data. Any one of thirteen different display screens are used for entering information, monitoring the progress of a reading and checking data before and after recording. An LCD heater is provided for low temperature operation.

Programmable Windows

The user has the option to use the default window widths in the IPR-12 or you may set up custom slice widths to suit your application.

Keyboard

Seventeen large keys control the instrument and permit entry of alphanumeric information.

Solid State Memory

All instrument parameters as well as entered notes, measured and calculated quantities are stored in the large capacity, fail-safe memory.

Memory Recall

Any observation recorded in memory can be recalled, by simple keyboard entry, for inspection on the display.

PC Compatibility

The IPR-12 has an RS-232C, 7 or 8 bit ASCII high baud rate interface, compatible with most laptops or PCs. This permits data to be dumped on a line by line basis or all at once from the operator's memory for archiving or processing.

Spectral Quality IP

Depending on receive time, 10 to 14 windows are measured simultaneously for each dipole. Selectable total receive times are 1, 2, 4, 8, 16 and 32 seconds. After the current is shut off, there is a delay of 10 milliseconds. Then, the width of each window in the seven following pairs of windows is, respectively: 1, 2, 4, 8, 16, 32, and 64 milliseconds.

14, 23 and 36. This format provides a high density of information at early times where the decay of the curve is steepest.

Variable Chargeability Summing

By keyboard selection, you can choose an additional, summed transient window.

This value, M_x , is recorded in memory along with the value for each of the measured transient windows. Summing can be done for the purpose of obtaining a parameter close to that measured with earlier receivers. The width of the M_x window ranges upwards from 10 milliseconds in 10 millisecond steps.

Signal Enhancement

Primary voltage, self potential and induced transient windows are continuously averaged and the display is updated every cycle so the operator is fully aware of signal improvement.

Calculates Cole-Cole Parameters

The IPR-12 calculates the Cole-Cole parameters; true chargeability (M) and time constant (τ) for a fixed C of 0.25. These parameters, which are recorded in memory may be used to assist interpretation by distinguishing between different chargeable sources, based mainly on textural differences. This feature is not available if programmable windows are selected.

Noise Rejection



FEATURES

Individual samples contaminated by noise can be automatically rejected.

Statistical Parameters

The IPR-12 calculates statistical error parameters for Mx. The RMS error of the deviation between the measured data and best fit of the Cole-Cole calculation is σ/W derived.

Selectable Reading Termination

By keyboard selection the receiver can be set up to terminate readings by either a manual key press or when a preset number of cycles have been measured.

Normalization for M and Vp

The value recorded for each M window is in millivolt/volt, that is to say that normalization is automatically done for the width of each window and for the primary voltage, Vp is also normalized for time of integration.

Automatic Resistivity Calculations

The IPR-12 calculates the geometrical (K) factors for standard arrays shown in the Info display based on electrode positions given in the Locations display. This feature is particularly helpful for arrays like the Gradient of Schlumberger in which the K-Factors change for every station. Then, using measured primary voltages with operator entered current values, the receiver calculates and records apparent resistivity values.

Automatic Vp Self Ranging

There is no manual adjustment for different primary voltages since the IPR-12 automatically adjusts the gain of its signal conditioning amplifiers for any Vp signal in the range of 50 microvolts to 14 volt μ H scale.

Automatic SP Correction

Self potential buckout is entirely automatic, both initially and throughout the measurement.

Synchronization

In normal operation, the IPR-12 synchronizes itself on the received waveform, and triggering is disabled until to within about 60 milliseconds before a signal transition. This reduces to a negligible level the possibility of false triggering.

Electrode Resistance Check

A built-in AC ohmmeter avoids electrode polarization, while checking the ground resistance of electrodes and the continuity of field cables. The circuit resistance values are displayed and are automatically recorded in memory.

The IPR-12 features a new, improved large highly visible liquid crystal display

Self-Check Program

Each time the instrument is turned on, a verification of the program memory is automatically performed.

Out of Limit Checks

Messages appear on the display if any of the following errors occur: out of calibration or failed memory test, incorrect signal amplitude or excessive noise, signal input with respect to the reference electrode in excess of the permitted range, synchronization failure, previous station's data not filed and data memory full.

Analog Meter

When signals on up to eight dipoles are presented simultaneously on the digital display, one analog meter, easily switchable from dipole to dipole, has been provided for monitoring particularly noisy conditions.

Internal Test Generator

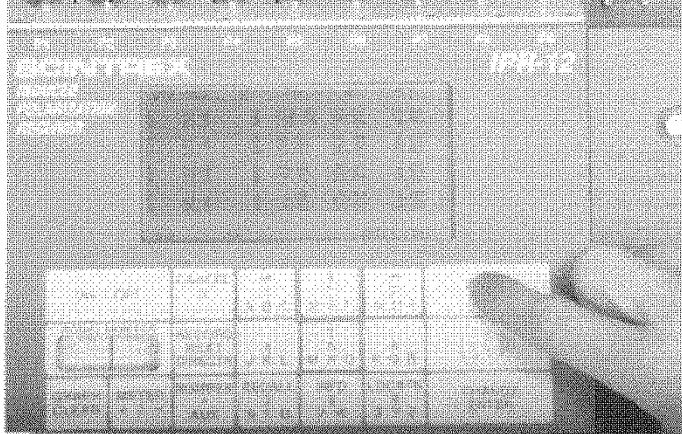
An internal signal generator is used to test the instrument periodically, to ensure that it is functioning properly.

Overload Detection

All analog signal levels are monitored to prevent measurements on individual dipoles for which limits are exceeded and appropriate messages are displayed. The affected samples are not added to the previous average.

Noise Filters

Radio frequency and 10Hz 6 pole low pass



filters enhance signal quality. The low cut off frequency and steep roll-off of the latter filters provide better powerline noise rejection than notch filters.

Noise Monitor

This monitor allows the display of noise and the received signal for any selected dipole in a similar manner to that of a digital oscilloscope.

Input Protection

If signals in excess of 14V and up to 60V are accidentally applied at the input, zener diode protection ensures that no damage will occur. For higher voltages fuse protection is used.

Binding Posts

To avoid inter-electrode leakage which may occur in humid conditions with small, multipin connectors, the IPR-12 has been designed with widely spaced binding posts.

Mueller Cable

The "Mueller IP/Resistivity Snake" is a potential cable set that has been designed by a geophysical field operator with many years of practical experience in conducting surveys in all types of terrain. Designed to be easily and quickly moved along the survey line to increase your survey efficiency. In significant cost savings made possible by the "Snake".

Software

A complete range of data processing, plotting and interpretation software is available to meet all requirements.

SPECIFICATIONS

Inputs

1 to 8 dipoles are measured simultaneously.

Input Impedance

16 Megohms

SP Bucklug

± 10 volt range. Automatic linear correction operating on a cycle by cycle basis.

Input Voltage (Vp) Range

50 tvolt to 14 volt

Chargeability (M) Range

0 to 300 millivolt/volt

Tau Range

60 microseconds to 2000 seconds

Reading Resolution of Vp, SP and M Vp, 10

microvolt; SP, 1 millivolt; M, 0.01 millivolt/volt

Absolute Accuracy of Vp, SP and M

Better than 1%

Common Mode Rejection

At input more than 100db

Vp Integration rune

10% to 80% of the tUrrcnt on time.

IP Transient Program

Total measuring time keyboard selectable at

1, 2, 4, 8, 16 or 32 seconds. Normally 14 windows except the first four are not measured on the 1 second timing, the first three are not measured on the 2 second timing and the first is not measured on the 4 second timing. An

additional transient slice of minimum to ms width, and 10ms steps, with delay of at least 40 ms is keyboard selectable. Programmable windows also available.

Transmitter Thuing

Equal on and off times with polarity change each half cycle. On/off times of 1, 2, 4, 8, 16 or 32 seconds. Timing accuracy of ±100 ppm or better is required.

Internal Circuit Test

All dipoles are measured individually in sequence, using a 10Hz square wave. The range is 0 to 2 Mohm with 0.1 kohm resolution. Circuit resistances are displayed and recorded.

Synchronization

Self synchronization on the signal received at a keyboard selectable dipole. Limited to avoid mistriggering.

Filtering

RF filter, 10 Hz 6 pole low pass filter, statistical noise spike removal.

Internal Test Generator

J200mVofSP; 807 mVofVp and

30.28 mVIV of M.

Analog Meter

For monitoring input signals; switchable to any dipole via keyboard.

Keyboard

17 key keypad with direct one key access to the most frequently used functions.

Display

16 lines by 40 characters, 128 x 240 dots, Backlit Superlumin. Crystal Display. Displays instrument status and data during and after reading. Alphanumeric and graphic displays.

Display Heater

Available for below -15°C operation.

Memory Capacity

Stores approximately 400 dipoles of information when 8 dipoles are measured simultaneously.

Real Time Clock

Data is recorded with year, month, day, hour, minute and second.

Digital Data Output

Formatted serial data output for printer and PC etc. Data output in 7 or 8 bit ASCII, one start, one stop bit, no parity format. Baud rate is keyboard selectable for standard rates between 300 baud and 57.6 kBaud. Selectable "rriage

return delay to accommodate slow peripherals. Hand-shaking is done by X-on/X-off.

Standard Rechargeable Batteries

Eight rechargeable NiHr D cells. Supplied with a charger, suitable for 1101230V, 50 to 60Hz, IOW. More than 20 hours service at +25°C, more than 8 hours at -30°C.

Ancillary Rechargeable Batteries

An additional eight rechargeable Ni-Cad D cells may be installed in the console along with the Standard Rechargeable Batteries. Used to power the Display Heater or as backup power. Supplied with a second charger. More than 6 hours service at -30°C.

Use of Non-Rechargeable Batteries

Can be powered by D size Alkaline batteries, but rechargeable batteries are recommended for lower cost over time.

Operating Temperature Range

-30°C to +50°C

Storage Temperature Range

-10°C to +50°C

Dimensions

Console: 355 x 270 x 165 mm

Charger: 120 x 95 x 55 mm

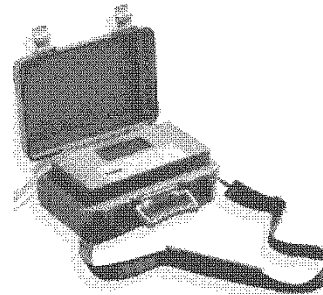
Weights

Console: 5.8 kJl Batteries: 1.3 kJl

Charger: 1.1 kJl

Transmitters Available

TPC-9 200 W TSQ-2E 750 W TSQ-3 3 kW TSQ-4
10 kW VERSA 1X



SCINTREX

Earth Science Instrumentation

Head Office
SCINTREX
222 Snider Road
Concord, California 94520-1235
Telephone: (915) 691-2300
Fax: (915) 669-6403
e-mail: scintrex@scintrex.com
website: www.scintrex.com



In the U.S.A.
SCINTREX Inc.
900 Woodrow Lane, Suite #100
Denton, Texas
76205 U.S.A.
Telephone: (940) 591-7755
Fax: (940) 591-968
e-mail: richardj@sdntrexusa.com

In S.E. Asia **SCINTREX/AUSLOG P.O.**
BOX 125 Summer Park
83 Jijaws Street, Brisbane
Telephone: +61-7-3376-5188
Fax: +61-7-3376-6626
e-mail: ausfog@auslog.com.au
website: www.auslog.com.au

WALCER_GEOPHYSICS LTD.



TRAN TIERS
TOR GENERA" f R.S.
GE REELS SP[ED
DERS
ELECTRO ES
WI

R.ENTALS

MAINTENANC

E

CONTACT US

Contact Webmaster at



MG-12A

Output
Self Excite / Regulated
120 / 220V AC
20 KVA Max
400 Hz / 3 phase

Generator Bendix Aircraft
Type Very durable
Forced Air Cooled

Engine
24 HP Honda
Electric Start

Size
79cm. x 61cm. x 48cm.

Weight
89 kg.

Gasoline Tank

External -to minimize shipping problems with airlines

Walcer Model TX 9000

Power Input
125V line to neutral
400 Hz / 3 phase
Powered by I G-12

Output
100 - 3200V in 10 steps
0.05 - 20 Amps
Tested to 9.25 kVA

Switching
1 sec., 2 sec., 4 sec., 8 sec.

Metering
LED for line voltage and output current

Size

63cm. x 54cm. x 25cm.



Weight
44 kg.

Appendix D

Clearview Geophysics Induced Polarization Survey Psuedo-Sections/ Inversions