

We are committed to providing [accessible customer service](#).
If you need accessible formats or communications supports, please [contact us](#).

Nous tenons à améliorer [l'accessibilité des services à la clientèle](#).
Si vous avez besoin de formats accessibles ou d'aide à la communication, veuillez [nous contacter](#).

**Assessment Report on
Geological Grid Mapping
Minnipuka Township Property,
Ontario**

Claims 4265571, 4265572, 4269930, 4269932
G-2336, Minnipuka and Walls Townships, Porcupine Mining Division
UTM WGS84 Zone 17U 297433mE 5425484mN;
Lat 48° 56' 57"N, Long 83° 46' 01"W;
NTS 42B13

For:
Pavey Ark Minerals Inc.
Client number 41165

Prepared By:
Richard Sutcliffe, P.Geo. (Client number 225603)
100 Broad Leaf Crescent,
Ancaster, ON, L9G 3R8

June 28, 2016

Executive Summary

This assessment report documents grid cutting, geological mapping, and sampling on the Minnipuka Township Property, Porcupine Mining Division, Ontario. The exploration targets gold mineralization associated with the Puskuta Deformation Zone and base metal mineralization associated with felsic metavolcanic rocks.

Field work for this report was carried out from May 2 to June 18, 2016 on claims 4265571, 4265572, 4269930, 4269932. Reporting was completed on June 28, 2016. The total length of the cut grid is 16.5 km. The grid origin is located at UTM 17U 295108mE 5425452mN coincident with claim post #4 claim 4269930. The baseline is oriented at 115° relative to the UTM grid. During the mapping a total of 18 samples were collected and assayed for gold. The grid was cut by A-Star Prospecting of Thunder Bay. Mapping and field work was completed by Ian Dasti, M.Sc, of Thunder Bay and Richard Sutcliffe. Total expenditures were \$38,037.

The Minnipuka Property is located 80 km south of Hearst, Ontario. The Property is road accessible by route 583 and the Caithness logging road system that extends south from the Trans-Canada Highway 11 at Hearst. The Minnipuka Property is comprised of 10 contiguous staked claims (4266190, 4265571, 4265572, 4265573, 4265574, 4265575, 4265576, 4269930, 4269931, 4269932) covering 152 units owned by Pavey Ark Minerals Inc., a private Ontario company.

There has been limited previous exploration on the Minnipuka Property. Work has been concentrated on the west end of the property in Walls Township where AMAX completed airborne geophysics and drilled one 65.5 m hole that intersected a narrow interval of massive pyrite-pyrrhotite in garnetiferous biotite schist in 1981. Pavey Ark completed reconnaissance geological mapping of the claim group in 2015.

The Minnipuka Property is underlain by predominately Archean rocks at the eastern end of the Kabinakagami Lake greenstone belt. There are no prior detailed maps of Minnipuka Township. The Puskuta Deformation Zone is a km wide, steeply dipping, dextral, transcurrent structure that on a regional scale bounds the south side of the Kabinakagami Lake greenstone belt and extends for over 30 km to the southeast through Minnipuka and Puskuta Townships.

Mafic and felsic to intermediate metavolcanic rocks on the property have been metamorphosed to amphibolite facies and have been strongly deformed. The metavolcanic rocks include rhyolite that are a potential target for VMS mineralization. The mapping indicates that the Puskuta Deformation Zone is located along the southern part of the grid near the amphibolite/biotite tonalite contact. Potentially gold mineralized alteration systems associated with silicification, sericitization and minor sulphide mineralization were identified near the amphibolite/tonalite contact in the southern part of the grid. Eighteen samples were assayed for Au but only moderately anomalous values up to 25 ppb were obtained.

Table of Contents

Executive Summary

Table of Contents

- 1.0 Introduction
- 2.0 Location and Access
- 3.0 Claim Holding and Property Disposition
- 4.0 Previous Work
- 5.0 Geology
- 6.0 Grid
- 7.0 Mapping Program
- 8.0 Assay Results
- 9.0 Conclusions and Recommendations
- 10.0 References
- 11.0 Statement of Qualifications

List of Figures

- Figure 1 Minnipuka Property Location
- Figure 2 Minnipuka Property Geology and Grid Location

List of Tables

- Table 1 List of Staked Claims comprising the Minnipuka Property

List of Appendices

- Appendix 1 Sample Locations and Descriptions
- Appendix 2 Assay Certificates
- Appendix 3 Expenditures

Maps

- Map 1. Claim Map Parts of Minnipuka and Walls Townships G-2336, Scale 1:25,000
- Map 2. Minnipuka Property Geology and Sample Locations, Scale 1:5,000

1.0 Introduction

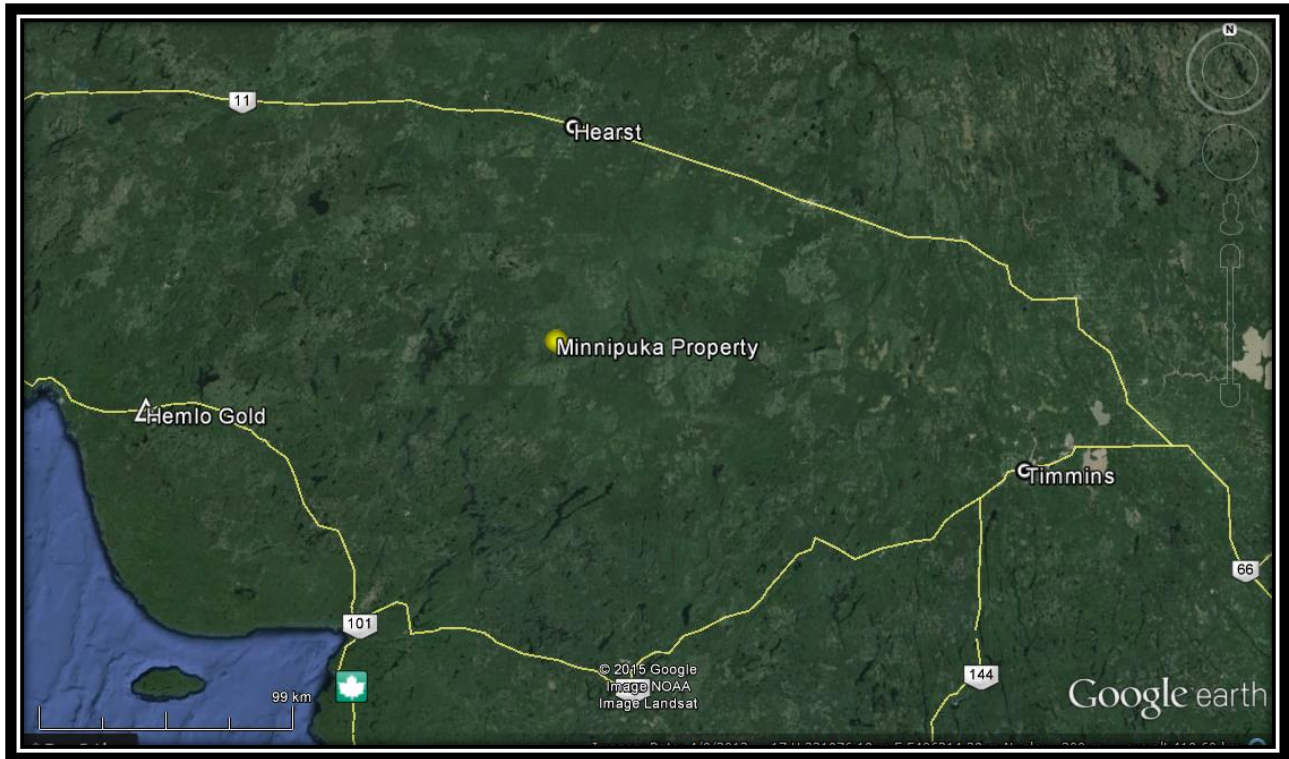
This assessment report documents grid cutting, geological mapping and sampling on the Minnipuka township Property, Porcupine Mining Division, Ontario. Field work for this report was carried out from May 2 to June 18, 2016 on claims 4265571, 4265572, 4269930, 4269932. Total expenditures were \$38,037. The exploration targets gold mineralization associated with the Puskuta deformation zone (Leclair et al. 1993) and base metal mineralization associated with felsic metavolcanic rocks including rhyolite.

2.0 Location and Access

The Minnipuka Property is 82 km south of Hearst, Ontario (Figure 1). The Property is road accessible by route 583 and the Caithness logging road system that extends south from the Trans-Canada Highway 11 at Hearst.

To access the property, at Hearst, Ontario, turn south from highway 11 onto route 583. Approximately 10.5 km south of Hearst on route 583, turn left onto the Caithness Road. At approximately 73 km south on the Caithness Road there is a junction with the Dishnish and Marjorie Roads. The Marjorie Road crosses the western most claim of the Property. The Goat Lake trail extends south from the Marjorie Road to the center of the Property and provides access to the grid. The Goat Lake trail is suitable for ATV or snowmobiles, however, access is restricted by the MNR during certain times of the year.

Figure 1. Minnipuka Property Location



Source: Google Earth 2015

3.0 Claim Holdings and Property Disposition

The Minnipuka Property is comprised of ten contiguous staked claims (4266190, 4265571, 4265572, 4265573, 4265574, 4265575, 4265576, 4269930, 4269931, 4269932) covering 152 claim units (2,432 ha) (Table 1). The claims are 100% owned by Pavey Ark Minerals Inc., a private Ontario company. One claim was initially staked in Walls Township in October, 2013, subsequently 6 claims were staked in July, 2014 in Minnipuka Township, and 3 claims were staked in Walls and Minnipuka Townships in February, 2016. A claim map is provided as Map 1. The property was initially called the Walls Property by Pavey Ark, but has been renamed to reflect the fact that the majority of the claims are now located in Minnipuka Township.

Table 1. List of staked claims comprising the Minnipuka Property.

PORCUPINE Mining Division - 411465 - PAVEY ARK MINERALS INC.

Township / Area	Claim Number	Recording Date	Claim Due Date	Status	Percent Option	Work Required	Total Applied	Total Reserve	Claim Bank
MINNIPUKA	4265571	2014-Jul-02	2016-Jul-02	A	100 %	\$6,400	\$0	\$0	\$0
MINNIPUKA	4265572	2014-Jul-02	2016-Jul-02	A	100 %	\$6,183	\$217	\$0	\$0
MINNIPUKA	4265573	2014-Jul-02	2016-Jul-02	A	100 %	\$6,400	\$0	\$0	\$0
MINNIPUKA	4265574	2014-Jul-02	2016-Jul-02	A	100 %	\$5,290	\$1,110	\$0	\$0
MINNIPUKA	4265575	2014-Jul-02	2016-Jul-02	A	100 %	\$5,542	\$858	\$0	\$0
MINNIPUKA	4265576	2014-Jul-02	2016-Jul-02	A	100 %	\$6,400	\$0	\$0	\$0
MINNIPUKA	4269930	2016-Feb-08	2018-Feb-08	A	100 %	\$3,200	\$0	\$0	\$0
MINNIPUKA	4269932	2016-Feb-08	2018-Feb-08	A	100 %	\$6,400	\$0	\$0	\$0
WALLS	4266190	2013-Oct-30	2016-Oct-30	A	100 %	\$6,400	\$6,400	\$0	\$0
WALLS	4269931	2016-Feb-08	2018-Feb-08	A	100 %	\$6,400	\$0	\$0	\$0

4.0 Previous Work

There has been limited previous exploration on the Minnipuka Property. Most of the work has been concentrated on the west end of the property in Walls Township.

AMAX completed airborne geophysical surveys over the Project area including an airborne magnetic survey at 200 m line spacing in 1979 (AFRI 42G04SW0207).

Subsequent to the airborne survey, AMAX completed a seven hole diamond drilling program in Walls Township in 1981 (AFRI 42G04SW0217). One hole, 1039-06B-01 with a length of 66.5 m, was located on Pavey Ark's claim 4266190 at the west end of the claim group. Hole 1039-06B-01 tested an airborne EM conductor and intersected a narrow interval of massive pyrite-pyrrhotite in biotite schist. No assay results were reported by AMAX, however, subsequent assessment work by Maurex Resources Limited (AFRI 42B13NW0202) reports that the interval from 32.0 to 33.4 m contained 6.02 ppm Au in massive sulphides.

Maurex Resources Limited conducted ground VLF-EM and magnetic surveys in 1987 (AFRI 42B13NW0202 and 42B13NE0211) to follow up on the AMAX drill results. Further work was recommended but no work is reported.

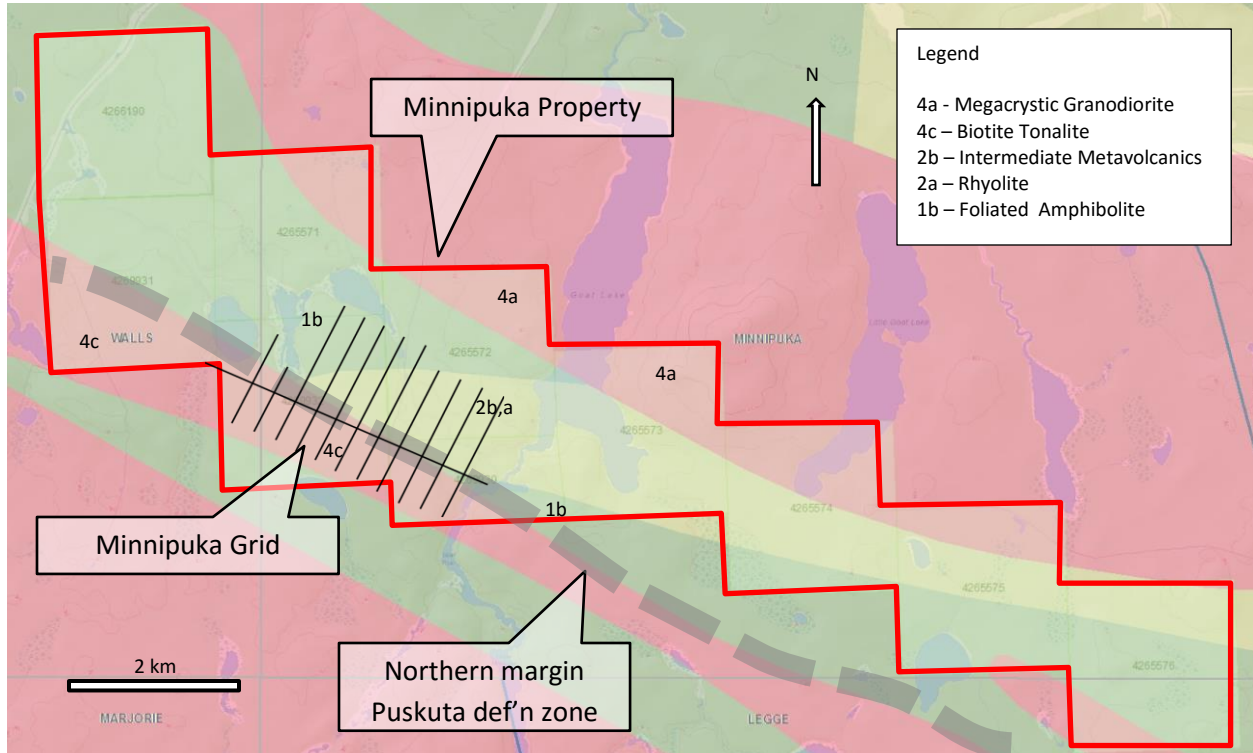
Golden Trio Minerals Ltd. conducted trenching on a number of EM targets in Minnipuka Township in 1988 (AFRI 42B13NE0204). Some of the trenches are located on claim 4265572 near the south end of the Goat Lake Road. No assay results are reported.

The Ontario Geological Survey (2015) released results of a helicopter mounted Geotech VTEM plus magnetic surveys flown at 200 m line spacing that covered Minnipuka Township and adjacent townships. Pavey Ark completed reconnaissance mapping of the Property in 2015.

5.0 Geology

The Minnipuka Property is underlain by predominately Archean rocks at the eastern end of the Kabinakagami Lake greenstone belt (Figure 2). The greenstone belt is intruded by Archean granite, megacrystic granodiorite, and tonalite plutons and by Proterozoic diabase dikes of the Hearst swarm. Walls Township was originally mapped by Maynard (1929). Subsequent Precambrian mapping was completed by Thurston et al. (1977) as part of a regional mapping program of the Chapleau area. There are no detailed maps of Minnipuka Township. The Puskuta Deformation zone is a 1 km wide, steeply dipping, dextral, transcurrent structure that on a regional scale bounds the south side of the Kabinakagami Lake greenstone belt and extends for over 30 km to the southeast through Minnipuka and Puskuta Townships (Leclair et al, 1993). LeClair and Sullivan (1991) report a U-Pb titanite age of 2,665 Ma for mylonite related to the Puskuta Deformation zone.

Figure 2. Minnipuka Property Geology



Base map source: OGS Claimaps 2016

6.0 Grid

For the present program a 16.5 km grid was cut by A-Star Prospecting of Thunder Bay. The grid origin is located at UTM 17U 295108mE 5425452mN coincident with claim post #4 claim 4269930. The baseline origin is also on the Goat Lake trail. The baseline extends from 9+00m E to 18+00mW at azimuth 115° relative to UTM grid. Lines are cut orthogonal to the baseline, spaced at 200 m, from 7+00mE to 15+00mW and are picketed at 25 m intervals.

7.0 Mapping Program

Geological mapping was conducted by I.R. Dasti, M.Sc., between May 2 and June 18 and by R.H. Sutcliffe on June 15 to 18, 2016. Mapping was done along grid lines, along forestry trails and by short traverses through the bush. Outcrop exposure has been frequently enhanced along the sides of forestry roads due to excavation of ditches that has removed overburden over bedrock. Outcrops were located by a handheld Garmin Etrex GPS receiver as well as grid pickets. Outcrops were plotted on the digital map base map downloaded from the MNM CLAIMaps III application. Ian Dasti prepared the geological map for the grid at a scale of 1:5,000.

Eighteen (18) grab samples with the MI16- and MP16- prefixes were collected for assay during the mapping program. The grab samples were analyzed for Au by FA. Results are discussed in section 8.0.

6.1 Mafic Metavolcanic Rocks

Mafic metavolcanic rocks on the Property are dominantly amphibolite metamorphic facies mafic metavolcanics that are banded (unit 1a) to strongly foliated (unit 1b). Banded amphibolites are characterized by mm to cm scale feldspathic layers alternating with more mafic layers. The author interprets that these textures are probably metamorphic.

6.2 Felsic to Intermediate Metavolcanic Rocks

Felsic to intermediate metavolcanic rocks occur in an approximately 750 m thick unit striking northwest-southeast and extending across the northern part of the grid. There appears to be two bands of white to light grey, highly siliceous, foliated and banded aphanitic rhyolite (unit 2a). This unit is well exposed in outcrops at the south end of the Goat Lake road. Strongly foliated, intermediate fragmental rocks (unit 2b) including lapilli tuff, are observed as intermediate grey biotite bearing schists and layered metavolcanic rocks. Lapilli tuff contains cm scale felsic-intermediate fragment in an intermediate matrix.

6.3 Felsic Intrusive Rocks

In the southern part of the grid, strongly foliated biotite tonalite (unit 4c) is intrusive into layered and foliated mafic amphibolite (units 1a and 1b). Adjacent to the tonalite, the mafic amphibolite contains numerous sills of felsite (unit 4d). This assemblage is similar to the rocks hosting gold mineralization in Hawkins township to the west.

North of the grid, the dominant lithology is megacrystic biotite granodiorite (unit 4a) with 1 to 2 cm microcline phenocrysts. This unit is not observed in outcrop on the grid but has been mapped east of the grid and is interpreted to be present immediately north of the grid based on magnetic trends.

6.5 Diabase Dikes

Medium-grained diabase dikes intrude the Archean metavolcanic and intrusive rocks. The dikes are weakly magnetic and equigranular. The mapped dikes have NE and NW striking orientations.

6.6 Structure

The metavolcanic and metasedimentary rocks are characterized by strong penetrative fabrics and ductile deformation. Foliations in the rocks on the grid are northwest-southeast striking with northeast dips at 55 to 70°. Minor folds on the northwestern part of the grid are observed to have an east plunging lineation.

The Puskuta Deformation Zone occurs in the southern part of the grid and the approximate northern boundary of the deformation zone as defined by outcrops with features of high strain is indicated on Map 2. This coincides with amphibolite biotite tonalite contact. Typical high strain textures include protomylonite fabric with quartz ribbons, rootless “hook shaped” minor folds, boudinage, and augen or flaser-type textures with clasts of less deformed rock in strongly deformed matrix. Foliation in the Puskuta deformation zone is characterized by a broadly northwest-southeast strike and north dipping orientation.

Minor sinistral faulting is observed in association with diabase dike emplacement.

8.0 Assay Results

Sample preparation and analysis was done at Accurassay Laboratories in Thunder Bay. A total of 18 samples were submitted for assay. All samples were dried, crushed, split and pulverized. Samples were analyzed for gold by fire assay (FA) using 30 g aliquots with an atomic absorption spectrometry (AAS) finish. Sample locations are provided on Map 2. Assay certificates are attached as appendix 2.

The majority of samples contained gold that was below the 5 ppb detection limit. Four samples had detectable gold with values ranging from 9 to 25 ppb. These samples were all taken from rocks with quartz veining, with minor sulphide mineralization locally present. The highest value of 25 ppb is associated with silicified and deformed tonalite immediately north of the interpreted location of the Puskuta deformation zone.

9.0 Conclusions and Recommendations

Metavolcanic rocks on the property have been metamorphosed to amphibolite facies and have been strongly deformed. The mapping indicates that the Puskuta Deformation Zone is located along the southern part of the grid and parallels the base line.

Potentially gold mineralized alteration systems associated with silicification and quartz veins, sericitization and minor sulphide mineralization were identified in association with the deformation on the Puskuta zone near the amphibolite/tonalite contact. These rocks locally have weakly anomalous gold results. Follow up IP geophysics and prospecting is recommended.

The mapping program identified felsic to intermediate rocks south that are prospective for base metals. These rocks are associated with VTEM anomalies identified by the OGS 2015 airborne survey. Follow up ground geophysics with a MaxMin EM survey on the grid is strongly recommended.

10.0 References

LeClair, A.D., Ernst, R.E., and Hattori, K. 1993. Crustal scale auriferous shear zones in the central Superior province, Canada. *Geology*, v. 21, pp. 399-402.

Leclair, A.D. and Sullivan, R.W. 1991. U-Pb zircon and titanite ages of upper and lower crustal rocks in the central Kapuskasing uplift, northern Ontario, in *Radiogenic age and Isotopic Studies, Report 4*, Geological Survey of Canada, Paper 90-2, p. 45-59.

Maynard, J.E. 1929, Oba Area, District of Algoma, Ontario Department of Mines, Annual Report 1929, v. 38, pt. 6, pp. 114-125.

Ontario Geological Survey, 2015. Airborne magnetic and electromagnetic surveys, colour-filled contours of the residual magnetic field and electromagnetic anomalies, Kabinakagami Lake area; Ontario, Geological Survey, Map 82 754, scale 1:50 000.

Thurston, P.C., Siragusa, G.M., Sage R.P. 1977. Geology of the Chapleau Area, Ontario Division of Mines, Geoscience Report 157, Accompanying Map 2221.

11.0 Statement of Qualifications

I, Richard H. Sutcliffe, of 100 Broadleaf Crescent, Ancaster, Ontario, do hereby certify that:

I am a graduate of University of Toronto (B.Sc. Geology, 1977, M.Sc Geology 1980), and a graduate of University of Western Ontario (Ph.D. Geology, 1986) and I have been practising my profession as a geologist since.

I am a member with the Association of Professional Geoscientists of Ontario (#852).

I have direct knowledge of the exploration work performed for this assessment and I am indirectly the owner of the claims on which the work was performed.

Signed

"R.H. Sutcliffe"

Richard H. Sutcliffe, Ph.D., P.Geo.

June 28, 2016

Ancaster, Ontario

Appendix 1. Sample Locations and Descriptions

Map ID	Assay Cert ID	Sampler	Easting	Northing	Description
MI16-01		IRD	295149	5425663	Felsic metavolcanics, flow-banded rhyolite, white
MI16-02	1340185	IRD	295674	5425178	Foliated tonalite with quartz veining, beige, trace py
MI16-03	1340186	IRD	295665	5425158	Foliated tonalite with quartz veining, beige
MI16-04	1340187	IRD	295660	5425164	5-10 cm long quartz vein in amphibolite, dark green
MI16-05	1340188	IRD	295593	5424847	Foliated tonalite, cm-scale quartz veining, trace py
MI16-06	1340189	IRD	295604	5424847	Amphibolite/tonalite contact, quartz veining, foliated
MI16-07	1340190	IRD	295586	5424828	Foliated tonalite, minor quartz veining
MI16-08	1340191	IRD	295587	5424819	5cm quartz vein in foliated white tonalite, trace py
MI16-09	1340192	IRD	295569	5424828	Fine grained biotite schist, weathered/rusted, likely float
MI16-10	1340193	IRD	295200	5424974	Tonalite, low-moderate quartz veining
MI16-11	1340194	IRD	295191	5424982	Tonalite, minor amphibolite, weak-moderate quartz veining
MI16-12	1340195	IRD	295190	5424982	Tonalite, minor amphibolite, weak-moderate quartz veining
MI16-13	1340196	IRD	295064	5425074	Tonalite, fine-medium grained, patchy quartz veining
MI16-14	1340197	IRD	295113	5425146	Fine grained tonalite, foliated, moderate quartz veining
MI16-15	1340198	IRD	295029	5425099	Medium grained foliated tonalite, moderate quartz veining
MI16-16	1340199	IRD	295071	5425163	Medium grained tonalite, weak sericite, mod quartz veining
MP16-01	615901	RHS	2944903	5425282	Quartz vein in sheared felsite host
MP16-02	615902	RHS	2944903	5425282	Sheared felsite, silicification, minor sericite
MP16-03	615903	RHS	294929	5425793	Sample of rhyolite from loose block on outcrop, strongly foliated, sericite alteration

Appendix 2. Assay Certificates

See attachments

Thursday, June 23, 2016

Final Certificate

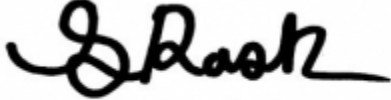
Pavey Ark Minerals Inc.
100 Broadleaf Cres.
Ancaster,, ON, Can
L9G 3R8
Ph#: (905) 304-4499
Fax#: (905) 920-0436
Email: rhsutcliffe@paveyarkminerals.com

Date Received: 06/21/2016
Date Completed: 06/23/2016
Job #: 201641318
Reference:
Sample #: 3

Acc #	Client ID	Au g/t (ppm)
140053	615901	<0.005
140054	615902	<0.005
140055	615902 Dup	<0.005
140056	615903	<0.005

APPLIED SCOPES: ALP1, ALFA1

Validated By:



Shawn Rask
Laboratory Assistant Manager

Certified By:



Andrew Oleski
Lab Manager - Thunder Bay

Authorized By:



Derek Demianiuk, VP Quality

The results included on this report relate only to the items tested.

The Certificate of Analysis should not be reproduced except in full, without the written approval of the laboratory.

Thursday, June 23, 2016

Final Certificate

Pavey Ark Minerals Inc.
100 Broadleaf Cres.
Ancaster,, ON, Can
L9G 3R8
Ph#: (905) 304-4499
Fax#: (905) 920-0436
Email: rhsutcliffe@paveyarkminerals.com

Date Received: 06/21/2016
Date Completed: 06/23/2016
Job #: 201641318
Reference:
Sample #: 3

Control Standards

QC Type	Element	QC Performance (ppm)	Mean (ppm)	Std Dev (ppm)
GS42	Au	0.611	0.650	0.040

APPLIED SCOPES: ALP1, ALFA1

Validated By:



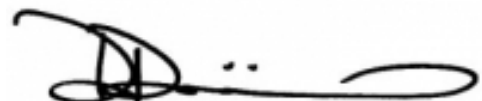
Shawn Rask
Laboratory Assistant Manager

Certified By:



Andrew Oleski
Lab Manager - Thunder Bay

Authorized By:



Derek Demianiuk, VP Quality

The results included on this report relate only to the items tested.

The Certificate of Analysis should not be reproduced except in full, without the written approval of the laboratory.

Monday, May 30, 2016

Final Certificate

 Pavey Ark Minerals Inc.
 100 Broadleaf Cres.
 Ancaster,, ON, Can
 L9G 3R8
 Ph#: (905) 304-4499
 Fax#: (905) 920-0436
 Email: rhsutcliffe@paveyarkminerals.com

 Date Received: 05/26/2016
 Date Completed: 05/30/2016
 Job #: 201641089
 Reference:
 Sample #: 15

Acc #	Client ID	Au g/t (ppm)
118371	1340185	0.011
118372	1340186	0.010
118373	1340187	<0.005
118374	1340188	<0.005
118375	1340189	0.009
118376	1340190	<0.005
118377	1340191	<0.005
118378	1340192	<0.005
118379	1340193	0.025
118380	1340194	<0.005
118381	1340194 Dup	<0.005
118382	1340195	<0.005
118383	1340196	<0.005
118384	1340197	<0.005
118385	1340198	<0.005
118386	1340199	<0.005

APPLIED SCOPES: ALP1, ALFA1

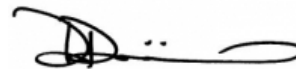
Validated By:


 Shawn Rask
 Laboratory Assistant Manager

Certified By:


 Andrew Oleski
 Lab Manager - Thunder Bay

Authorized By:


 Derek Demianiuk, VP Quality

The results included on this report relate only to the items tested.

The Certificate of Analysis should not be reproduced except in full, without the written approval of the laboratory.

Monday, May 30, 2016

Final Certificate

Pavey Ark Minerals Inc.
100 Broadleaf Cres.
Ancaster,, ON, Can
L9G 3R8
Ph#: (905) 304-4499
Fax#: (905) 920-0436
Email: rhsutcliffe@paveyarkminerals.com

Date Received: 05/26/2016
Date Completed: 05/30/2016
Job #: 201641089
Reference:
Sample #: 15

Control Standards

QC Type	Element	QC Performance (ppm)	Mean (ppm)	Std Dev (ppm)
GS42	Au	0.715	0.650	0.040

APPLIED SCOPES: ALP1, ALFA1

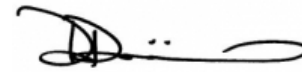
Validated By:


Shawn Rask
Laboratory Assistant Manager

Certified By:


Andrew Oleski
Lab Manager - Thunder Bay

Authorized By:


Derek Demianiuk, VP Quality**The results included on this report relate only to the items tested.****The Certificate of Analysis should not be reproduced except in full, without the written approval of the laboratory.**

Appendix 3. Expenditures

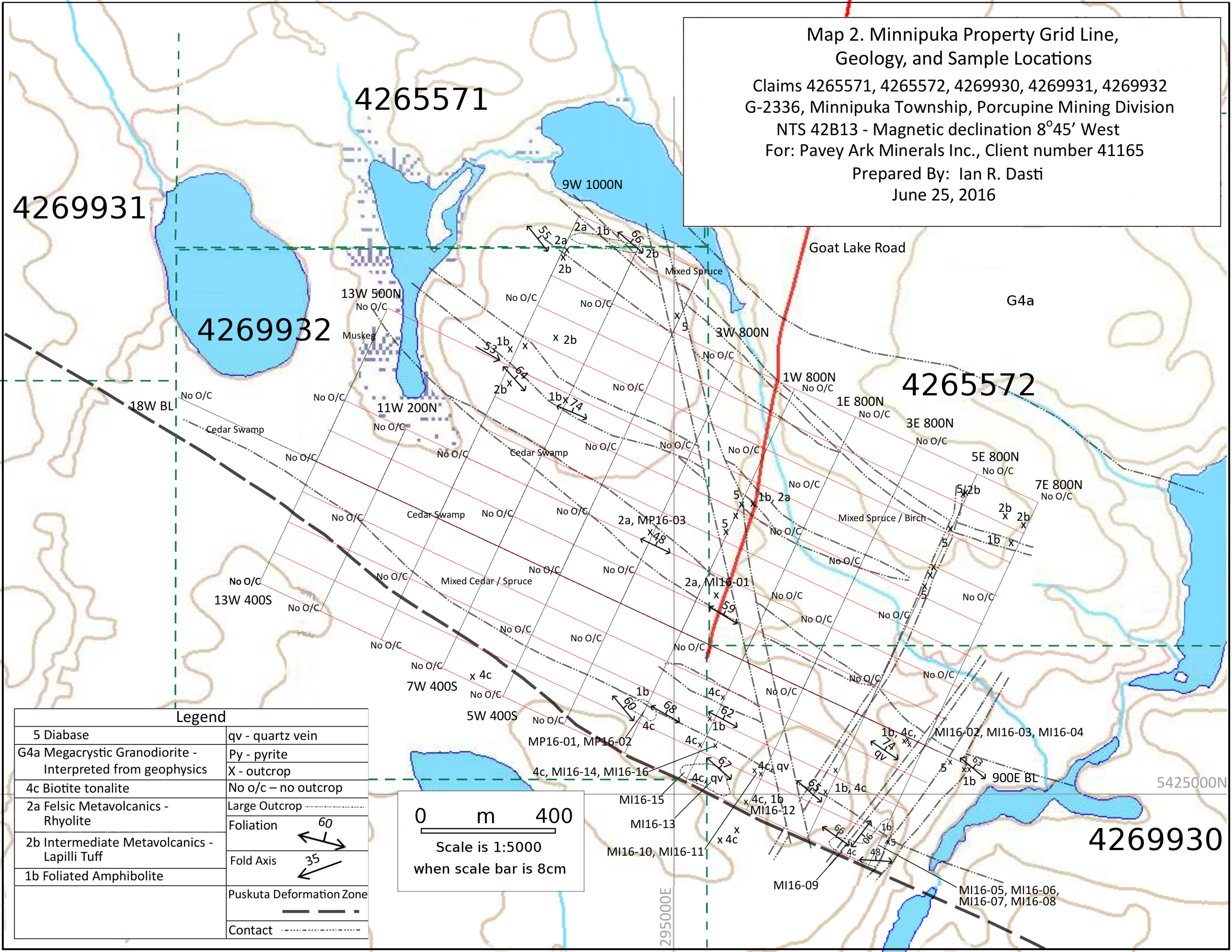
Item	Units	Unit Cost	HST	Total
Line Cutting – May 7 to 17, 2016				
A-Star Prospecting - Line cutting, plus mob/demob/camp costs	16.5 km	\$750/km	2,265.25	\$19,690.25
Geologist – R. Sutcliffe				
Field work – June 15 to 18, 2016	4 days	\$650/day	338.00	2,938.00
Reporting – 2 days, June 27, 28, 2016	2 days	\$650/day	169.00	1,469.00
				4,407.00
Contract Geologist – Ian Dasti Consulting – May 2 to 25 and June 15 to 27, 2016				
Ian Dasti - Geologist (18 days)	18 days	\$375	877.50	7,627.50
Field assistant (5 days)	5	\$250	162.50	1,412.50
Transportation	2,722 km	\$0.50		1,361.00
Quad Rental	8 days	\$150	156.00	\$1,356.00
Meals/motel/supplies				\$562.05
				12,319.05
Analytical - Accurassay				
Dry, crush, split, pulp, Au (FA/AAS 30g)	15	16.95	33.06	287.30
Dry, crush, split, pulp, Au (FA/AAS 30g)	3	16.95	6.61	57.46
				344.76
Travel				
Personal Vehicle – 1 trip Ancaster/Hearst/Ancaster	1,992 km	\$0.50/km		996.00
Hearst/Minnipuka Twp/Hearst	180 km	\$0.50/km		90.00
				1,086.00
Food and Accommodation				
Groceries	5 days	\$35/day		165.00
Office Supplies & Field consumables				
Copies			2.84	\$24.64
TOTAL EXPENDITURES				38,036.70

Assignment of Expenditure to Claims				
Claim	Percentage	Expenditure	Assigned	Order to be Cut back
4265571	10%	3,804	6,400	7
4265572	30%	11,411	6,183	6
4269930	10%	3,804	0	8
4269932	50%	19,019	1,823	1
4265573	0%	0	6,400	5
4265574	0%	0	5,290	4
4265575	0%	0	5,542	3
4265576	0%	0	6,400	2
Total		38,038	38,038	

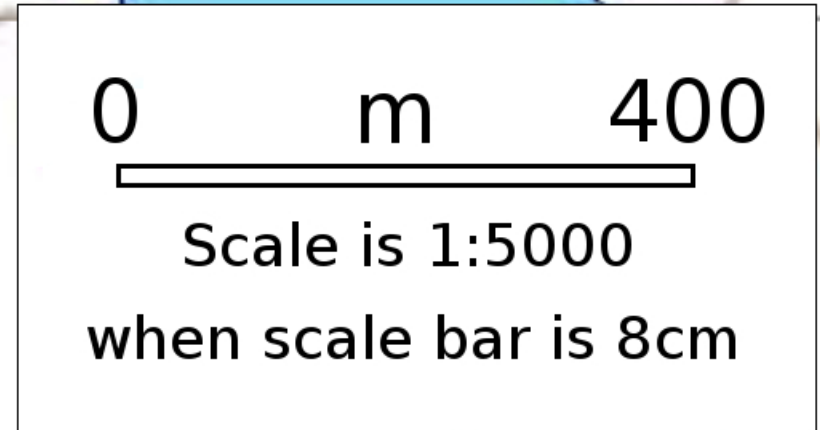
Map 2. Minnipuka Property Grid Line, Geology, and Sample Locations

Claims 4265571, 4265572, 4269930, 4269931, 4269932
G-2336, Minnipuka Township, Porcupine Mining Division
NTS 42B13 - Magnetic declination 8°45' West
For: Pavey Ark Minerals Inc., Client number 41165

Prepared By: Ian R. Dasti
June 25, 2016



Legend	
5 Diabase	qv - quartz vein
G4a Megacrystic Granodiorite - Interpreted from geophysics	Py - pyrite X - outcrop
4c Biotite tonalite	No o/c - no outcrop
2a Felsic Metavolcanics - Rhyolite	Large Outcrop
2b Intermediate Metavolcanics - Lapilli Tuff	Foliation
1b Foliated Amphibolite	Fold Axis
	Puskuta Deformation Zone
	Contact



0 m 400
Scale is 1:5000
when scale bar is 8cm