

We are committed to providing [accessible customer service](#).

If you need accessible formats or communications supports, please [contact us](#).

Nous tenons à améliorer [l'accessibilité des services à la clientèle](#).

Si vous avez besoin de formats accessibles ou d'aide à la communication, veuillez [nous contacter](#).

WORK REPORT
on the
AUTUMN 2018 SURFACE PROSPECTING PROGRAM
BOSTON CREEK PROPERTY
PACAUD TOWNSHIPS, ONTARIO
NEW FOUND GOLD CORP.

Ken Rattee, BSc
Project Geologist
Pamela Iraheta Munoz, BSc
February 1, 2019

TABLE OF CONTENTS

INTRODUCTION	1
LOCATION AND ACCESS	2
BOSTON CREEK PROPERTY	2
DAILY LOG – SEPTEMBER 25, 2018	3
DAILY LOG – SEPTEMBER 26, 2018	5
APPENDIX A – BOSTON CREEK PROPERTY CLAIM LIST	
APPENDIX B – BOSTON CREEK PROPERTY ASSAY TABLE	
APPENDIX C – CERTIFICATES OF ANALYSIS	
APPENDIX D – GARMIN 62S SPECIFICATIONS	
APPENDIX E – CERTIFICATE OF AUTHORSHIP	

MAP SUPPLEMENT FILES: (see attached)

- 1) BOSTON CREEK PROPERTY GEOLOGY 1:10000**
- 2) BOSTON CREEK PROPERTY – NEW FOUND GOLD CORP. (PROPERTY OUTLINE)**
- 3) BOSTON CREEK PROPERTY AUTUMN 2018 GRAB SAMPLES 1:2500**
- 4) BOSTON CREEK PROPERTY AUTUMN 2018 TRAVERSES 1:2500**

INTRODUCTION

On September 25th and 26th, 2018 New Found Gold Corp conducted a prospecting and reconnaissance program on its Boston Creek property in Pacaud Township. The work was performed on Crown cell claims #163712 and #277697. The property lies approximately 18 kilometres south of the town of Kirkland Lake, Ontario. The property has a surface area of 240 hectares and contains 1 single Crown cell claim, 14 boundary and encumbered Crown cell claims and 5 leasehold claims. Refer to Appendix A, Boston Creek Property Claim List. The purpose of the exploration reconnaissance was to prospect for gold or base metal mineralization on these two claims particularly to ascertain the nature of the known pyritic mineralization on the rockcuts beside the ONR rail line just north of the Highway 564 rail crossing. This program completes the exploration reconnaissance of the property initiated in 2016 when the eastern portion of the property was prospected, described in the assessment report, Work Report on the August 2016 Prospecting-Reconnaissance Survey, Boston Creek Property, Pacaud Township, Ontario, Palisades Resources Corp, November 1, 2016. The work was conducted in the field by Ken Rattee (New Found Gold Corp, Project Geologist) and Pamela Iraheta-Muniz (New Found Gold Corp, Field Geologist). The property is under MENDM Permit/Plan PR-18-000170 and PR-18-000171.

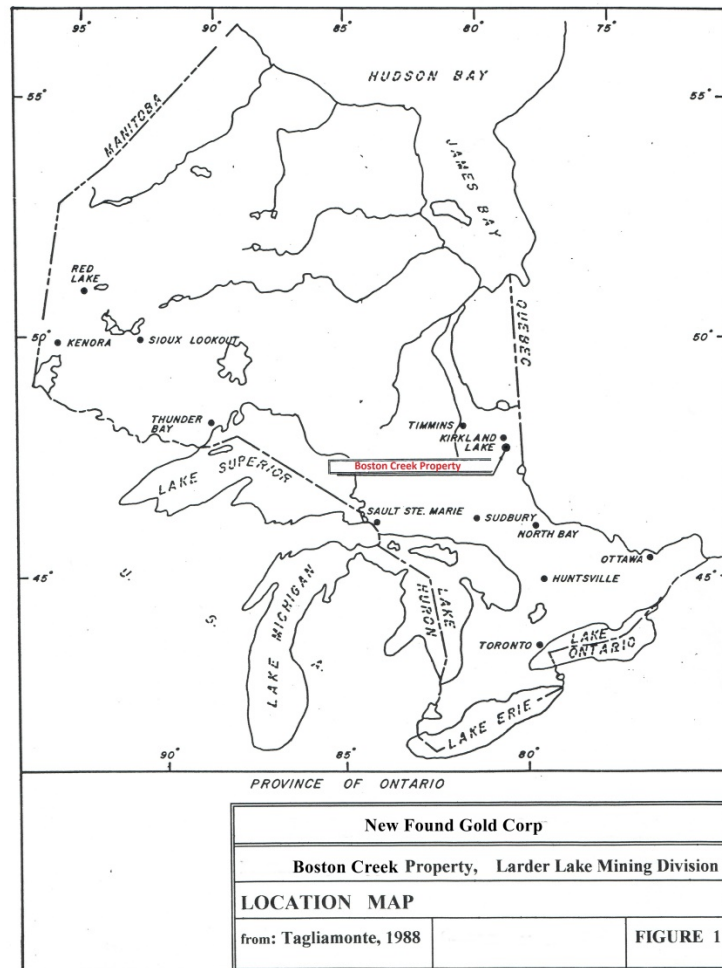


Figure 1 – Boston Creek Property

LOCATION AND ACCESS

The property is located approximately 18 kilometres south of the town of Kirkland Lake, Ontario. The Boston Creek property is accessible from Kirkland Lake by traveling west for 6 kilometres along Highway 66 to the Highway 112 junction. Highway 112 is followed south for 15 kilometres to the Highway 564 junction. Highway 564 is followed east for 6 kilometres to the ONR rail crossing just before Boston Creek village. The target area lies adjacent to the northern side of Highway 564 at the ONR rail crossing.

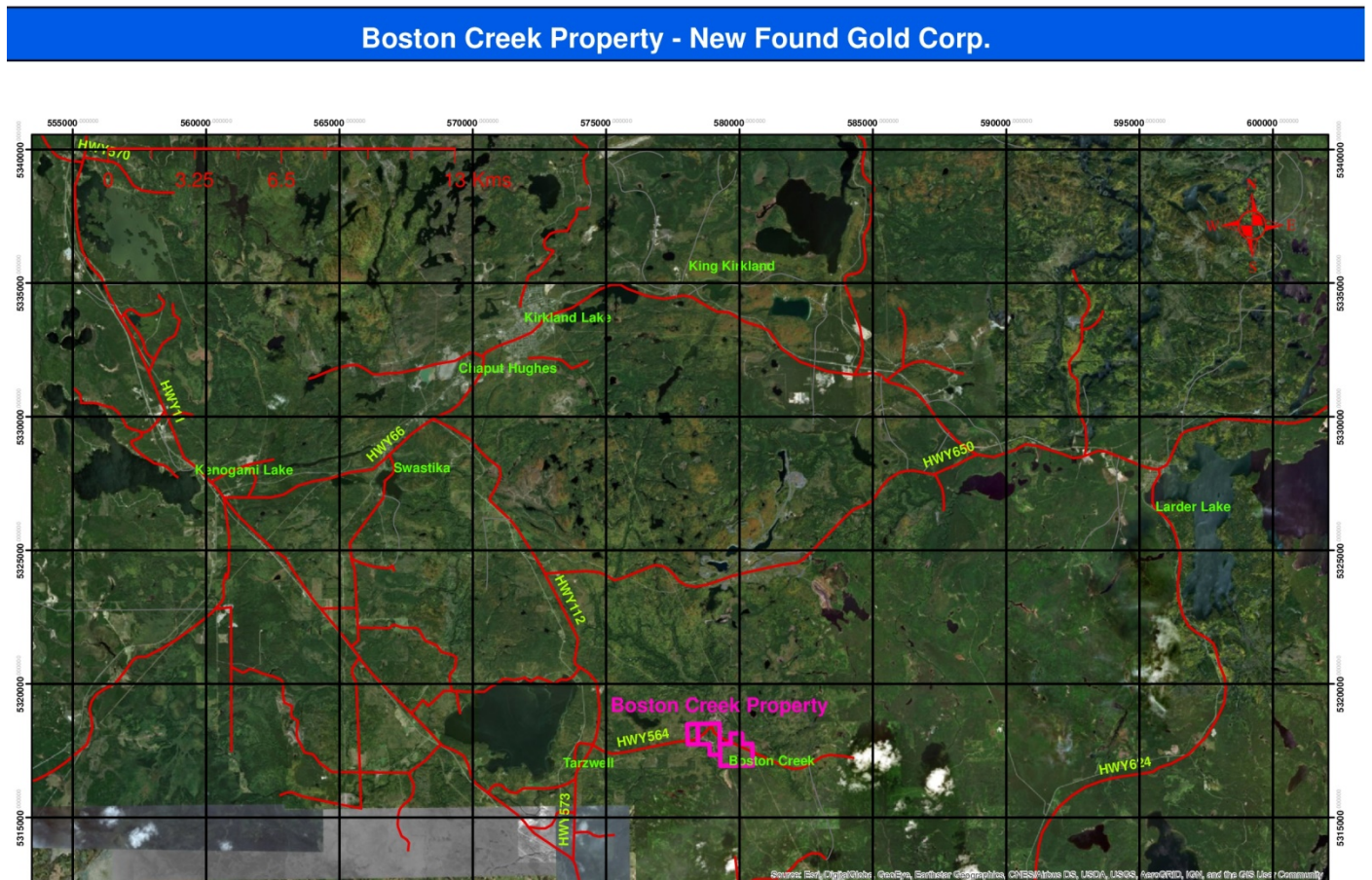


Figure 2 – Boston Creek Property Road access

BOSTON CREEK PROPERTY

The Boston Creek property is comprised of 1 single Crown cell claim, 14 boundary and encumbered Crown cell claims and 5 leasehold claims. New Found Gold Corp is a 100% owner of 1 single Crown cell claim and 8 boundary and encumbered Crown cell claims while Boston Creek Mines Ltd is a 100% owner of 6 boundary and encumbered Crown cell claims and the 5 leasehold claims. Refer to Appendix A, Boston Creek Property Claim List and Map Supplement 2, Boston Creek Property – New Found Gold Corp (Property Outline). Boston Creek Mines Ltd claims have been under a 3 year option agreement with New Found Gold Corp since May 2016 which grants New Found Gold the exclusive right to explore and develop the property. If the

payment obligations are fulfilled New Found Gold will acquire 100% ownership of the claims no later than May 2019.

The rocks underlying the property are of the Pacaud Tuff assemblage. The Pacaud Tuffs encircle the Round Lake Batholith, an approximate 45 x 30 kilometre, tonalith-granodiorite intrusion exposed on the south-central and south-eastern portion of the property. The Pacaud Tuffs are considered to be the oldest lithologic assemblage in the region and comprise a 300 to 500 metre section of mainly calc-alkaline andesite, dacite and rhyolite tuffs with some tholeiitic and komatiitic flows towards the top. The Pacaud Tuffs are overlain by the mafic and ultramafic flows of the Wabewawa Group. The Pacaud Fault marks the contact between the Pacaud Tuff and the Wabewawa Group. Refer to Map Supplement 1, Boston Creek Property Geology.

The property lies approximately 17 kilometres south of the Larder-Cadillac Deformation Zone, the regional east-west structural control on gold bearing alteration and mineralization, traced for over 200 kilometres from Val d'Or, Quebec to Matachewan, Ontario. The LCDZ is the control for numerous gold mines along its length, which has produced over 100 million ounces gold historically. The Kirkland Lake Gold Camp, approximately 18 kilometres north of the Boston Creek property, accounts for over 26 million ounces of historic gold production since the early 20th century.

The Barry Hollinger Mine lies approximately 500 metres east of the eastern edge of the Boston Creek property. The Barry Hollinger produced approximately 77,000 ozs Au during intermittent production from 1918 to 1946. The mine is controlled by the Pacaud Fault and lies just north of the contact with the Pacaud Tuffs in the mafic volcanic flows of the Wabewawa Group. The gold-bearing quartz veins strike at approximately 70° and would project onto to the Boston Creek property to the west. This eastern portion was prospected and mapped by Palisades Resources Corp (now New Found Gold Corp) in August 2016 and though numerous quartz veins were mapped and sampled, none returned a significant or anomalous Au assay. This work is described in the work assessment report, Work Report on the August 2016 Prospecting-Reconnaissance Survey, Pacaud Township, Palisades Resources Corp, Ken Rattee.

DAILY LOG – SEPTEMBER 25, 2018

A series of deep rock cuts on the sides of the Ontario Northland Railway rail line just north of the Highway 624 level crossing was prospected and sampled on the first day on the Boston Creek property. Refer to Map Supplement Files 3 & 4, Boston Creek Property Autumn 2018 Traverse and Grab Samples. A series of pyrite bands was mapped and sampled in this area. The bands were typically >50% fine-grained pyrite hosted in a highly oxidized, fine-grained intermediate tuff with up to 10% quartz blebs and discontinuous stringers to 3cm. The pyritic band sampled as Q297376 was highly sheared over 10cm on the pyritic band's hanging wall side, interpreted as a weak fault concordant with the pyrite band. The pyrite bands exhibited widths from 10-40cm. and were orientated at an approximate 105° strike direction dipping steeply south at approximately 70°. Pyrite was the only mineralization noted in this area. The intermediate tuff hosting the pyrite bands were characterized as fine-grained, grey, featureless in appearance and massive. The tuffs typically were highly oxidized adjacent to the pyrite bands and some quartz veins and slightly to moderately oxidized as irregular patches elsewhere.



Figure 4 – ONR rock cut, Boston Creek property

A 1.5 metre thick syenite porphyry dyke was mapped towards the northern end of the long rock cut (sample Q297379). The dyke appeared highly altered and reddened with only the occasional euhedral, K-feldspar phenocryst to 3mm evident. The dyke was cut with minor, irregular quartz stringers to 3mm. No mineralization appeared evident in the syenite. The strike appeared concordant with the pyrite bands striking at 115° and dipping at 80° south.

Occasional bullish looking, greyish-white quartz veins up to 10cm in width was noted along the rock cut. The quartz veins were somewhat irregular in strike measuring from 60° to 160° though generally concordant with the pyrite bands. The quartz veins dipped steeply south at 75° to 80°. Adjacent wallrock was typically slightly bleached with up to 3% finely disseminated pyrite.

Eleven samples were collected for sample, three from the pyritic bands, six from quartz veins or stringers, one from the syenite porphyry dyke and one from highly oxidized intermediate tuff. None of the samples returned significant gold or base metal values. Refer to Appendix B, Boston Creek Property Assay Table.

DAILY LOG – SEPTEMBER, 26, 2018

The ground east and west of the pyrite bands and quartz veins in the ONR rock cut prospected and sampled on September 25th, was prospected and mapped to ascertain if the pyrite bands and quartz veins continued along strike and explore for additional mineralization in the area. Refer to Map Supplement Files 3 & 4, Boston Creek Property Autumn 2018 Traverse and Grab Samples. Bedrock exposure was only sporadic east of the ONR rock cut and non-existent in the area immediately west of the ONR rock cut.

Two old pits 80 and 110 metres east of the ONR rock cut, and along strike of the pyrite bands in the ONR rock cut, hosted quartz veins to 15cm in width and pyritic stringers to 3mm thick. The quartz and pyrite concentrations were hosted in a highly oxidized, fine-grained, locally foliated intermediate tuff. The foliation, possible remnant bedding, appeared approximately concordant to the pyrite bands and structure evident in the ONR rock cut, striking at 120° and dipping south at 60°. The quartz veins were characterized as greyish-white with abundant, irregular, hairline chlorite fractures. Fine-grained, disseminated pyrite to 10% was concentrated in the highly oxidized, intermediate tuff wallrock within 20cm of the contact with the quartz veins. The quartz veins were generally orientated at a 120° strike, dipping to the south at 60° concordant with the foliation noted in the intermediate tuff and approximately concordant with the pyrite bands in the ONR rock cut. Though only pyrite mineralization was noted in the field the highest base metal assay was returned from the north pit (Q297381) with a zinc value of 0.43%. No other significant value was returned from the three samples collected for assay from these two pits. Refer to Appendix B, Boston Creek Property Assay Table.

East of the two pits only sporadic outcrops of intermediate tuff and a syenite porphyry dyke were noted. The intermediate tuff was characterized as generally fresh, grey, fine-grained with local bedding evident. Bedding orientation was consistently a 110° strike with an 80° south dip concordant with the pyrite bands and structure evident in the ONR rock cut. A 5 metre thick syenite porphyry dyke was mapped in the north east portion of the target area. The syenite porphyry dyke was characterized as fresh, pinkish-brown, with approximately 15% euhedral to

subhedral K-feldspar phenocrysts to 5mm in size in a fine-grained, pinkish, K-feldspar matrix. The contact with the intermediate tuff was concordant with the bedding orientation within tuffs, with the strike measured at 110°. No significant mineralization or quartz veining in this area east of the ONR rock cut and no samples were collected for assay.

Just south of the Highway 564 with the ONR rail line just west of the village of Boston Creek a series of old trenches was discovered. The pits were filled with human refuse, clearly being used as an occasional illicit garbage dump. The pits would lie approximately 50 metres north of the Round Lake Batholith contact. Abundant quartz was noted in the rubble on the sides of the trenches apparently hosted by a fresh to locally highly oxidized intermediate tuff. Massive, greyish-white quartz fragments to 10cm in size was evident in the trench rubble. The quartz was mineralized locally with 1-2% fine to coarse-grained chalcopyrite becoming highly concentrated along hairline chlorite fractures with a chalcopyrite 'bleb' 8mm in size noted (sample Q297382). Up to 20% fine to coarse-grained pyrite was noted locally in highly oxidized intermediate tuff. Three samples were collected for assay from this area with Q297382 returning a copper assay of 0.14%. No other significant base metal or gold assays were returned from the three samples. Refer to Appendix B, Boston Creek Property Assay Table.

Appendix A - Boston Creek Property Claim List

Property Name	Claim Number	Claim Type	Title Type	Anniversary Date	Work Required	Total Reserve	Owner (%)	Township	Mining Division	Legacy Claim
Boston Creek	115180	Claim	SCMC	2019-05-09	200	0	NEW FOUND GOLD CORP (100)	BOSTON,PACAUD	LARDER LAKE	4282355
Boston Creek	118466	Claim	SCMC	2019-05-09	200	0	NEW FOUND GOLD CORP (100)	PACAUD	LARDER LAKE	4282356
Boston Creek	152763	Claim	BCMC	2019-05-09	200	0	NEW FOUND GOLD CORP (100)	BOSTON,PACAUD	LARDER LAKE	4282355
Boston Creek	163711	Claim	BCMC	2019-05-09	200	0	NEW FOUND GOLD CORP (100)	PACAUD	LARDER LAKE	4282355
Boston Creek	163712	Claim	SCMC	2019-05-09	200	0	NEW FOUND GOLD CORP (100)	PACAUD	LARDER LAKE	4282355
Boston Creek	163713	Claim	SCMC	2019-05-09	200	0	NEW FOUND GOLD CORP (100)	PACAUD	LARDER LAKE	4282356
Boston Creek	198109	Claim	BCMC	2019-05-09	200	0	NEW FOUND GOLD CORP (100)	BOSTON,PACAUD	LARDER LAKE	4282355
Boston Creek	259649	Claim	BCMC	2019-05-09	200	0	NEW FOUND GOLD CORP (100)	PACAUD	LARDER LAKE	4282356
Boston Creek	277697	Claim	SCMC	2019-05-09	400	0	NEW FOUND GOLD CORP (100)	PACAUD	LARDER LAKE	4282355
Boston Creek	172936	Claim	BCMC	2019-08-08	200	1134	BOSTON CREEK MINES LTD (100)	PACAUD	LARDER LAKE	3003557
Boston Creek	202367	Claim	BCMC	2019-08-08	200	0	BOSTON CREEK MINES LTD (100)	PACAUD	LARDER LAKE	3003558
Boston Creek	252243	Claim	SCMC	2019-08-26	200	1037	BOSTON CREEK MINES LTD (100)	PACAUD	LARDER LAKE	3014483
Boston Creek	275073	Claim	SCMC	2019-08-08	200	2235	BOSTON CREEK MINES LTD (100)	PACAUD	LARDER LAKE	300358
Boston Creek	293519	Claim	BCMC	2019-08-08	200	0	BOSTON CREEK MINES LTD (100)	PACAUD	LARDER LAKE	3003557
Boston Creek	340220	Claim	BCMC	2019-08-26	200	0	BOSTON CREEK MINES LTD (100)	PACAUD	LARDER LAKE	3003558
Boston Creek	LEA-107493	Leasehold					BOSTON CREEK MINES LTD (100)	PACAUD	LARDER LAKE	
Boston Creek	LEA-108418	Leasehold					BOSTON CREEK MINES LTD (100)	PACAUD	LARDER LAKE	
Boston Creek	LEA-108417	Leasehold					BOSTON CREEK MINES LTD (100)	PACAUD	LARDER LAKE	
Boston Creek	LEA-109677	Leasehold					BOSTON CREEK MINES LTD (100)	PACAUD	LARDER LAKE	
Boston Creek	LEA-108836	Leasehold					BOSTON CREEK MINES LTD (100)	PACAUD	LARDER LAKE	

Appendix B - Boston Creek Property Assay Table

Sample #	Date Collected	UTM East (NAD83 Zone 17)	UTM North (NAD83 Zone 17)	Au (gpt)	Cu (ppm)	Pb (ppm)	Zn (ppm)	Sample Type
Q297374	25/09/18	578807	5317860	0.006	343	13	35	10cm py band (>50% fg py in strongly oxidized, highly altered intermediate tuff (IT)), strike 105/ dip 70S near vertical. Wall rock exhibits a weak banding within 50cm at py band (weak shearing?). E-side of train tracks
Q297375	25/09/18	576803	5317963	0.001	222	37	26	20-30cm py band 5m N of Q297374 band. >70% fine py in a strongly oxidized highly altered IT. Wispy qs embedded in py band up to 3 cm thick. Adjacent wall rx tightly banded within 50 cm of py band. E-side of train tracks
Q297376	25/09/18	578797	5317968	0.002	341	15	16	375 (?) py band on W-side of tracks. 20-40 cm massive py band (>50% massive py) in highly oxidized altered fg IT. ~10% <5% qtz blebs within band. Strike 105/70S. Highly sheared. 10 cm rubbly band on host rock adjacent to py band.
Q297377	25/09/18	578796	5317884	<0.001	179	3	102	3-4cm bullish looking QS, greyish-white on W side of tracks. Projects to Q297502 vein on E side of tracks. Strike 160 (?) / 75S. Adjacent wall rock mod. Oxidized, altered IT with 7-9% fg-mg py locally concentrated
Q297378	25/09/18	578775	5318035	<0.001	105	4	22	3-7cm greyish-white QV, looks bullish, no evidence of mineralization. Adjacent wall rock fairly fresh, fg, dark greenish-grey IT 2-3% fg dissem py. Strike 105/80S
Q297379	25/09/18	578780	5318046	<0.001	35	2	16	1.5m thick pinkish syenite porph locally highly reddened and altered. Irregular greyish QS to 3 mm. doesn't appear mineralized, no py evident. Strike 115/80S
Q297501	25/09/18	578814	5317949	<0.001	92	4	77	general sample of oxidized host rx. Outcrop is fg int tuff with stringers of pink sy. Fresh surface is blue grey, but whole surface is highly oxidized to an orange red colour. Some areas are "rotted out" and crumble easily. Some local oxidized patced covered in layer of fg euhedral py (~10% py in 1 frag. ,rest of rx has trace-2% fg dissem py). fine layerin up to 2mm visible in rx. possible shearing observed between 2 rx faces in area where sample was taken
Q297502	25/09/18	578799	5317971	<0.001	88	6	58	QV in IT, massive qtz 6-10cm thick and ~5m long exposure. 130/70-90S (undulating dip). Adjacent IT wallrx appears sheared next to V. IT is oxidized orange. QV is white but highly oxidized orange around fractures and on surface, no sulphides evident. SY and black chloritic hairline fractures visible in QV
Q297503	25/09/18	578781	5318028	<0.001	171	<2	28	QV in IT. QV breaks up into small stringers and crosscuts IT. QV itself is white but highly oxidized to orange. Sy stringers and xenos up to 3 cm long in QV (mostly concentrated along contact of QV with IT). Clots of mg-cg euhedral fr py in both QV and IV (~2%). epidote stringers (?) up to 3 mm in IT which follow the strike of the QV. trend varies bw 60-80/unknown dip. vein 1-10cm thick and visible for ~6m
Q297504	25/09/18	578754	5318052	<0.001	73	<2	41	QV in IT up to 2 cm thick, white with frags of pink sy, hematized fractures (~10% fractured). Mg py dissem in fractures along contact with IT (up to 2%). IT has fine dissem of py too. QV trending 140/unknown dip
Q297505	25/09/18	578770	5318038	<0.001	432	3	25	QV ~5cm thick, can be followed all the way to the top of the outcrop (8-10m?) with consistent width. White with xenos of pink sy brecciated throughout. Sharp contact with IT which contains bands of pink sy following strike and dip of QV (90/80S)
Q297381	26/09/18	578867	5317939	0.071	771	110	4320	old pit 3x3m. 14 cm whiteish-grey fractured qtz with concordant irregular hairline chloritic fractures. ~3-5% fg-mg py concentrated along chl fractures. Adjance wall rx IT, highly oxidized with tight 2mm py stringers and QS. Stringers look concordant. 5-10% py in wall rx adjacent to QV. it is highly chloritized
Q297382	26/09/18	578881	5317868	0.014	1435	18	66	trench rubble. massive greyish white qtz in S end of old very overgrown trench. QV >= 10 cm. 1-2% fg-cg cpy with qtz with 1 bleb to 8mm. Minor highly irregular chloritic fractures, cpy locally concentrated along these fractures. Hosted by fg fresh IT. Only qtz in sample
Q297506	26/09/18	578868	5317917	0.082	304	25	122	followed py bands at train tracks at a strike of 110. ~100m from this we picked up oxidized zone again in an old pit. Sample comes from bedrx directly otop of pit. Bedrx is highly oxidized IT, appears foliated 120/60S. Area 1x1m completely oxidized, crumbles easily. some areas covered by clots of fg py (up to 20%)
Q297507	26/09/18	578864	5317919	0.056	86	20	49	qtz band going through same highly oxidized IT zone as Q297506/ ~3cm thick, no sulphides visible but qtz is orange from abundant oxidation. 120/60S
Q297508	26/09/18	578803	5317874	<0.001	72	19	334	old trench found W of road. Host rx is highly oxidized IT (similar to what is observed in train tracks). Surface and rx interior completely orange, except for small patches where you can observe greenish grey rx. ~20% fg py dissem throughout as coarse 0.5cm clots
Q297509	26/09/18	578825	5317858	<0.001	45	18	37	in trench ~30m NE of trench where Q297508 was sampled. Trench has been used as garbage dump, lots of dead trees inside. 2 oxidized patches in trehnc, sampled NE end of trench. Oxidized band ~1.5m thick. Completely oxidized orange, crumbly, big blebs of fg py ~5x5cm in size occur in oxidized patch. qtz stringer ~2cm thick crosscuts through py bleb, white and unoxidized.

APPENDIX C
CERTIFICATES OF ANALYSIS



ALS Canada Ltd.
 2103 Dollarton Hwy
 North Vancouver BC V7H 0A7
 Phone: +1 (604) 984 0221 Fax: +1 (604) 984 0218
 www.alsglobal.com/geochemistry

To: **NEW FOUND GOLD CORP.**
69 YONGE STREET
SUITE 1010
TORONTO ON M5E 1K3

Page: 1
Total # Pages: 2 (A - C)
Plus Appendix Pages
Finalized Date: 13-OCT-2018
Account: PRCDVOXH

CERTIFICATE TM18245426

Project: LUCKY STRIKE

This report is for 24 Rock samples submitted to our lab in Timmins, ON, Canada on 1-OCT-2018.

The following have access to data associated with this certificate:

PETER DIMMELL KEN RATTEE	GREG MATHESON MICHAEL REGULAR	PETER MCINTYRE
-----------------------------	----------------------------------	----------------

SAMPLE PREPARATION	
ALS CODE	DESCRIPTION
WEI-21	Received Sample Weight
LOG-21	Sample logging - ClientBarCode
CRU-QC	Crushing QC Test
PUL-QC	Pulverizing QC Test
CRU-36	Fine Crushing - 85% <2mm
SPL-21	Split sample - riffle splitter
PUL-32	Pulverize 1000g to 85% < 75 um
LOG-23	Pulp Login - Rcvd with Barcode

ANALYTICAL PROCEDURES		
ALS CODE	DESCRIPTION	INSTRUMENT
ME-OG46	Ore Grade Elements - AquaRegia	ICP-AES
Cu-OG46	Ore Grade Cu - Aqua Regia	
Au-ICP21	Au 30g FA ICP-AES Finish	ICP-AES
ME-ICP41	35 Element Aqua Regia ICP-AES	ICP-AES

This is the Final Report and supersedes any preliminary report with this certificate number. Results apply to samples as submitted. All pages of this report have been checked and approved for release.

***** See Appendix Page for comments regarding this certificate *****

Signature: 
 Colin Ramshaw, Vancouver Laboratory Manager



ALS Canada Ltd.
 2103 Dollarton Hwy
 North Vancouver BC V7H 0A7
 Phone: +1 (604) 984 0221 Fax: +1 (604) 984 0218
 www.alsglobal.com/geochemistry

To: NEW FOUND GOLD CORP.
 69 YONGE STREET
 SUITE 1010
 TORONTO ON M5E 1K3

Page: 2 - A
 Total # Pages: 2 (A - C)
 Plus Appendix Pages
 Finalized Date: 13-OCT-2018
 Account: PRCDVOXH

Project: LUCKY STRIKE

CERTIFICATE OF ANALYSIS TM18245426

Sample Description	Method	WEI-21	Au-ICP21	ME-ICP41	ME-ICP41	ME-ICP41	ME-ICP41	ME-ICP41	ME-ICP41	ME-ICP41	ME-ICP41	ME-ICP41	ME-ICP41	ME-ICP41	ME-ICP41	ME-ICP41
	Analyte	Recvd Wt.	Au	Ag	Al	As	B	Ba	Be	Bi	Ca	Cd	Co	Cr	Cu	Fe
Units		kg	ppm	ppm	%	ppm	ppm	ppm	ppm	ppm	%	ppm	ppm	ppm	ppm	%
LOD		0.02	0.001	0.2	0.01	2	10	10	0.5	2	0.01	0.5	1	1	1	0.01
██████████		████	████	████	████	████	████	████	████	████	████	████	████	████	████	████
Q297374		3.10	0.006	1.2	0.33	4	30	<10	<0.5	<2	4.91	<0.5	35	5	343	41.2
Q297375		2.96	0.001	0.8	0.55	7	<10	20	<0.5	<2	1.94	<0.5	46	35	222	28.3
Q297376		2.64	0.002	0.7	0.14	6	<10	10	<0.5	<2	1.22	<0.5	39	9	341	40.5
Q297377		2.41	<0.001	0.2	1.03	<2	<10	10	<0.5	<2	0.47	<0.5	45	89	179	3.52
Q297378		1.76	<0.001	<0.2	0.36	<2	<10	20	<0.5	<2	0.86	<0.5	14	52	105	1.94
Q297379		2.23	<0.001	<0.2	0.34	<2	<10	30	<0.5	<2	0.23	<0.5	2	15	35	0.80
██████████		████	████	████	████	████	████	████	████	████	████	████	████	████	████	████
Q297381		3.01	0.071	5.3	0.76	5	<10	20	<0.5	<2	0.57	20.2	48	163	771	8.36
Q297382		2.64	0.014	1.5	1.67	<2	<10	10	0.9	14	1.10	<0.5	19	111	1435	2.99
Q297501		1.97	<0.001	<0.2	2.32	<2	<10	20	<0.5	<2	0.65	<0.5	15	36	92	5.35
Q297502		2.13	<0.001	<0.2	1.36	<2	<10	<10	<0.5	<2	0.54	<0.5	18	91	88	2.63
Q297503		1.77	<0.001	<0.2	0.72	<2	<10	10	<0.5	<2	2.08	<0.5	28	59	171	2.32
Q297504		1.37	<0.001	<0.2	1.18	<2	<10	<10	<0.5	<2	3.46	<0.5	22	89	73	2.23
Q297505		2.04	<0.001	0.2	0.42	<2	<10	10	<0.5	<2	0.86	<0.5	20	51	432	1.94
Q297506		0.91	0.082	2.9	1.02	3	<10	50	<0.5	<2	0.21	<0.5	13	128	304	9.28
Q297507		1.15	0.056	2.7	0.08	2	10	20	<0.5	<2	0.02	<0.5	3	31	86	5.75
Q297508		2.67	<0.001	0.4	1.95	2	<10	50	<0.5	<2	0.71	1.2	9	85	72	9.28
Q297509		2.72	<0.001	0.3	0.62	15	<10	20	<0.5	<2	0.64	<0.5	30	38	45	16.55
██████████		████	████	████	████	████	████	████	████	████	████	████	████	████	████	████



ALS Canada Ltd.
 2103 Dollarton Hwy
 North Vancouver BC V7H 0A7
 Phone: +1 (604) 984 0221 Fax: +1 (604) 984 0218
 www.alsglobal.com/geochemistry

To: NEW FOUND GOLD CORP.
 69 YONGE STREET
 SUITE 1010
 TORONTO ON M5E 1K3

Page: 2 - B
 Total # Pages: 2 (A - C)
 Plus Appendix Pages
 Finalized Date: 13-OCT-2018
 Account: PRCDVOXH

Project: LUCKY STRIKE

CERTIFICATE OF ANALYSIS TM18245426

Sample Description	Method	ME-ICP41	ME-ICP41	ME-ICP41	ME-ICP41	ME-ICP41	ME-ICP41	ME-ICP41	ME-ICP41	ME-ICP41	ME-ICP41	ME-ICP41	ME-ICP41	ME-ICP41	ME-ICP41	
	Analyte	Ga	Hg	K	La	Mg	Mn	Mo	Na	Ni	P	Pb	S	Sb	Sc	Sr
Units		ppm	ppm	%	ppm	%	ppm	ppm	%	ppm	ppm	ppm	%	ppm	ppm	ppm
LOD		10	1	0.01	10	0.01	5	1	0.01	1	10	2	0.01	2	1	1
████████		████	████	████	████	████	████	████	████	████	████	████	████	████	████	████
Q297374		<10	1	0.05	<10	0.24	7390	4	0.01	68	100	13	>10.0	<2	1	9
Q297375		<10	<1	0.06	<10	0.42	2290	3	0.01	81	50	37	>10.0	3	2	7
Q297376		<10	<1	0.05	<10	0.04	1290	2	0.01	108	20	15	>10.0	2	1	2
Q297377		<10	1	0.02	<10	0.97	402	1	0.01	47	150	3	1.29	<2	4	9
Q297378		<10	<1	0.04	<10	0.27	182	1	0.05	16	270	4	0.52	<2	3	27
Q297379		<10	<1	0.11	<10	0.16	96	<1	0.04	3	220	2	0.03	<2	1	26
████████		████	████	████	████	████	████	████	████	████	████	████	████	████	████	████
Q297381		10	<1	0.08	<10	0.23	374	4	<0.01	207	260	110	5.25	<2	4	2
Q297382		10	<1	0.01	<10	2.33	425	67	0.02	43	110	18	0.15	<2	11	6
Q297501		10	<1	0.07	10	1.49	1820	5	0.02	49	400	4	0.61	<2	2	19
Q297502		<10	<1	0.02	<10	1.41	488	<1	0.02	48	150	6	0.21	2	3	22
Q297503		<10	<1	0.03	<10	0.48	289	<1	0.06	36	600	<2	0.94	<2	5	45
Q297504		<10	<1	0.04	<10	1.15	511	3	0.02	51	100	<2	0.41	<2	3	28
Q297505		<10	<1	0.03	<10	0.31	160	<1	0.04	24	70	3	1.02	<2	2	21
Q297506		10	1	0.13	<10	0.46	230	5	<0.01	42	340	25	1.09	<2	4	5
Q297507		10	<1	0.04	<10	0.01	29	2	<0.01	4	120	20	0.17	<2	1	1
Q297508		<10	<1	0.05	<10	1.09	816	2	0.03	33	290	19	2.85	<2	4	10
Q297509		<10	<1	0.09	<10	0.37	387	5	0.03	25	250	18	>10.0	<2	2	19
████████		████	████	████	████	████	████	████	████	████	████	████	████	████	████	████



ALS Canada Ltd.
 2103 Dollarton Hwy
 North Vancouver BC V7H 0A7
 Phone: +1 (604) 984 0221 Fax: +1 (604) 984 0218
 www.alsglobal.com/geochemistry

To: NEW FOUND GOLD CORP.
 69 YONGE STREET
 SUITE 1010
 TORONTO ON M5E 1K3

Page: 2 - C
 Total # Pages: 2 (A - C)
 Plus Appendix Pages
 Finalized Date: 13-OCT-2018
 Account: PRCDVOXH

Project: LUCKY STRIKE

CERTIFICATE OF ANALYSIS TM18245426

Sample Description	Method Analyte Units LOD	ME-ICP41	ME-ICP41	ME-ICP41	ME-ICP41	ME-ICP41	ME-ICP41	Cu-OG46	CRU-QC	PUL-QC	
		Th	Ti	Tl	U	V	W	Zn	Cu	Pass2mm	Pass75um
		ppm	%	ppm	ppm	ppm	ppm	ppm	%	%	%
		20	0.01	10	10	1	10	2	0.001	0.01	0.01
Q297374		<20	0.01	<10	<10	18	<10	35			88.5
Q297375		<20	0.04	<10	<10	40	<10	26			97.5
Q297376		<20	0.01	<10	<10	19	<10	16			
Q297377		<20	0.11	<10	<10	45	<10	102			
Q297378		<20	0.14	<10	<10	42	<10	22			91.2
Q297379		<20	0.04	<10	<10	9	<10	16			
Q297381		<20	0.13	<10	<10	37	<10	4320			
Q297382		<20	0.11	<10	<10	121	<10	66			
Q297501		<20	0.11	<10	<10	36	<10	77			
Q297502		<20	0.13	<10	<10	62	<10	58			
Q297503		<20	0.24	<10	<10	63	<10	28			
Q297504		<20	0.11	<10	<10	34	<10	41			
Q297505		<20	0.10	<10	<10	26	<10	25			
Q297506		<20	0.28	<10	<10	58	<10	122			
Q297507		<20	0.05	<10	<10	15	<10	49			
Q297508		<20	0.12	<10	<10	50	<10	334			
Q297509		<20	0.10	<10	<10	40	<10	37			



ALS Canada Ltd.
2103 Dollarton Hwy
North Vancouver BC V7H 0A7
Phone: +1 (604) 984 0221 Fax: +1 (604) 984 0218
www.alsglobal.com/geochemistry

To: NEW FOUND GOLD CORP.
69 YONGE STREET
SUITE 1010
TORONTO ON M5E 1K3

Page: Appendix 1
Total # Appendix Pages: 1
Finalized Date: 13-OCT-2018
Account: PRCDVOXH

Project: LUCKY STRIKE

CERTIFICATE OF ANALYSIS TM18245426

CERTIFICATE COMMENTS

LABORATORY ADDRESSES

Applies to Method:	Processed at ALS Vancouver located at 2103 Dollarton Hwy, North Vancouver, BC, Canada.		
	Au-ICP21	Cu-OG46	ME-ICP41
			ME-OG46
Applies to Method:	Processed at ALS Timmins located at Unit 10 - 2090 Riverside Drive, Timmins, ON, Canada.		
	CRU-36	CRU-QC	LOG-21
	PUL-32	PUL-QC	SPL-21
			LOG-23
			WEI-21

APPENDIX D

GARMIN GPSmap 62s



General	
Physical dimensions	2.4" x 6.3" x 1.4" (6.1 x 16.0 x 3.6 cm)
Weight	7.9 oz (223 g) with batteries
Water rating	IPX7
Battery	2 AA batteries (not included); NiMH or Lithium recommended
Display type	transflective, 65-K color TFT
Display size	1.43" x 2.15" (3.6 x 5.5 cm); 2.6" diag (6.6 cm)
Display resolution	160 x 240 pixels
Battery life	20 hours
Memory/History	1.7 GB
High-sensitivity receiver	✓
Interface	high-speed USB and NMEA 0183 compatible

Maps & Memory	
Ability to add maps	✓
Basemap	✓
Storage and Power Capacity	microSD™ card (not included)
Waypoints/favorites/locations	2000
Routes	200
Track log	10,000 points, 200 saved tracks
Sensors	
Barometric altimeter	✓
Compass	Yes (tilt-compensated 3-axis)
Outdoor Recreation Features	
Area calculation	✓
Automatic routing (turn by turn routing on roads)	Yes (with optional mapping for detailed roads)
Geocaching-friendly	Yes (Paperless)
Custom maps compatible	✓
Hunt/fish calendar	✓
Sun and moon information	✓
Picture viewer	✓
Garmin Connect™	
Garmin Connect™ compatible (online community where you analyze, categorize and share data)	

- Specifications obtained from www.garmin.com

APPENDIX E: CERTIFICATE OF AUTHORSHIP

I, Ken Rattee, of the town of Kirkland Lake, Ontario hereby certify:

- 1) I am a graduate from the University of Toronto, Toronto, Ontario having received a Bachelor of Science degree, Geology Major in 1980.
- 2) I have worked for 38 years as a Geologist, predominantly in the north-eastern Ontario area, as a production, exploration and consultant geologist.
- 3) I am currently contracted as a Project Geologist for New Found Gold Corp. and was on site for the duration of the Autumn 2018 Boston Creek Property Surface Prospecting Program.

Date February 1, 2019



Ken Rattee, BSc

I, Pamela Iraheta Muniz, of the city of Toronto, Ontario hereby certify:

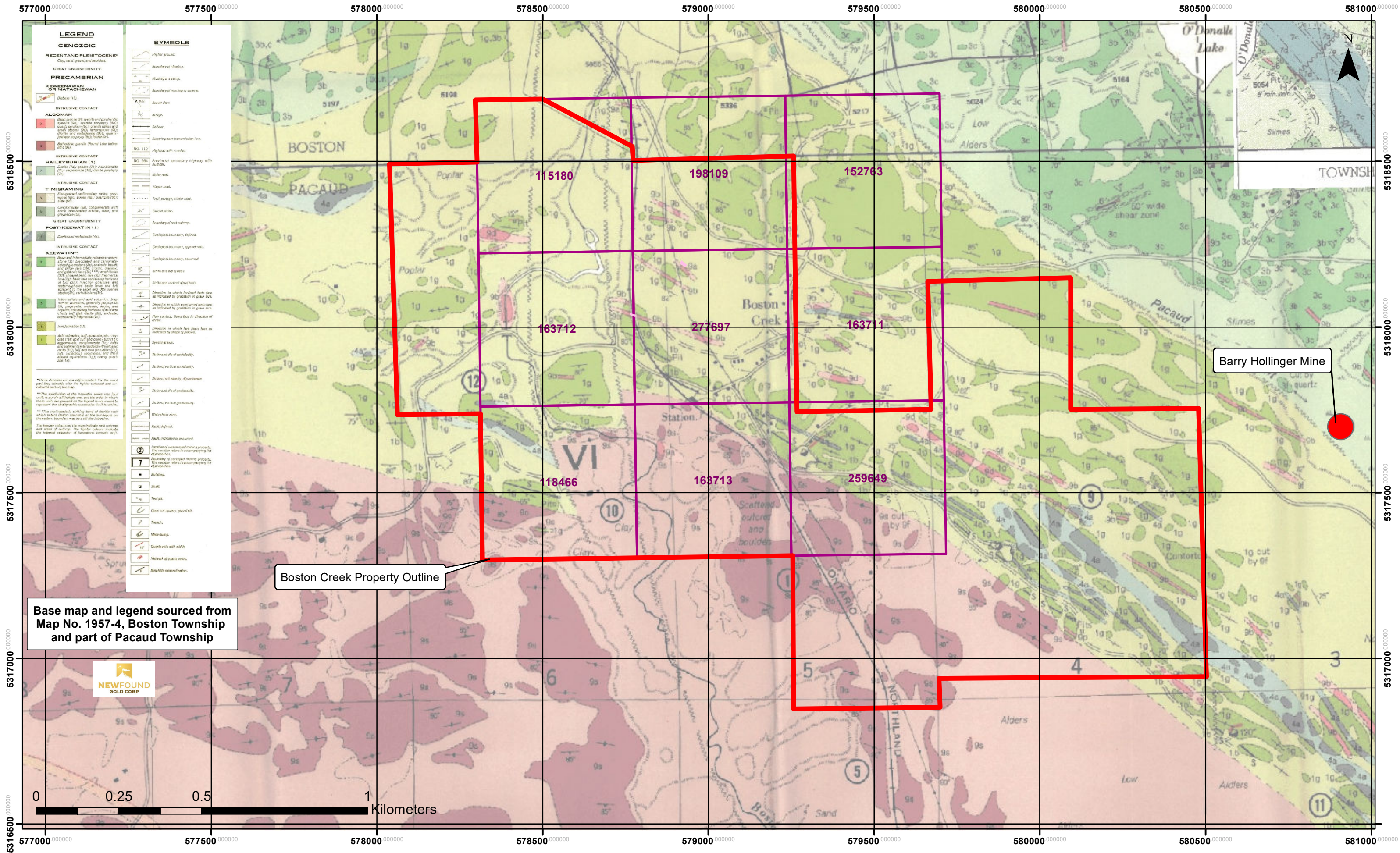
- 1) I am a graduate from Carleton University, Ottawa, Ontario having received a Bachelor of Science degree, Earth Sciences Major in June 2018.
- 2) I am currently in the process of registering as a Geoscientist in Training (GIT) under the Association of Professional Geoscientists of Ontario (APGO).
- 4) I am currently contracted as a Field Geologist for New Found Gold Corp. and was on site for the duration of the Autumn 2018 Boston Creek Property Surface Prospecting Program.

Dated February 1, 2019



Pamela Iraheta Muniz, BSc

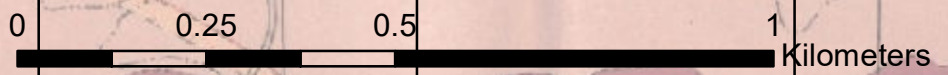
Boston Creek Property 1:10,000

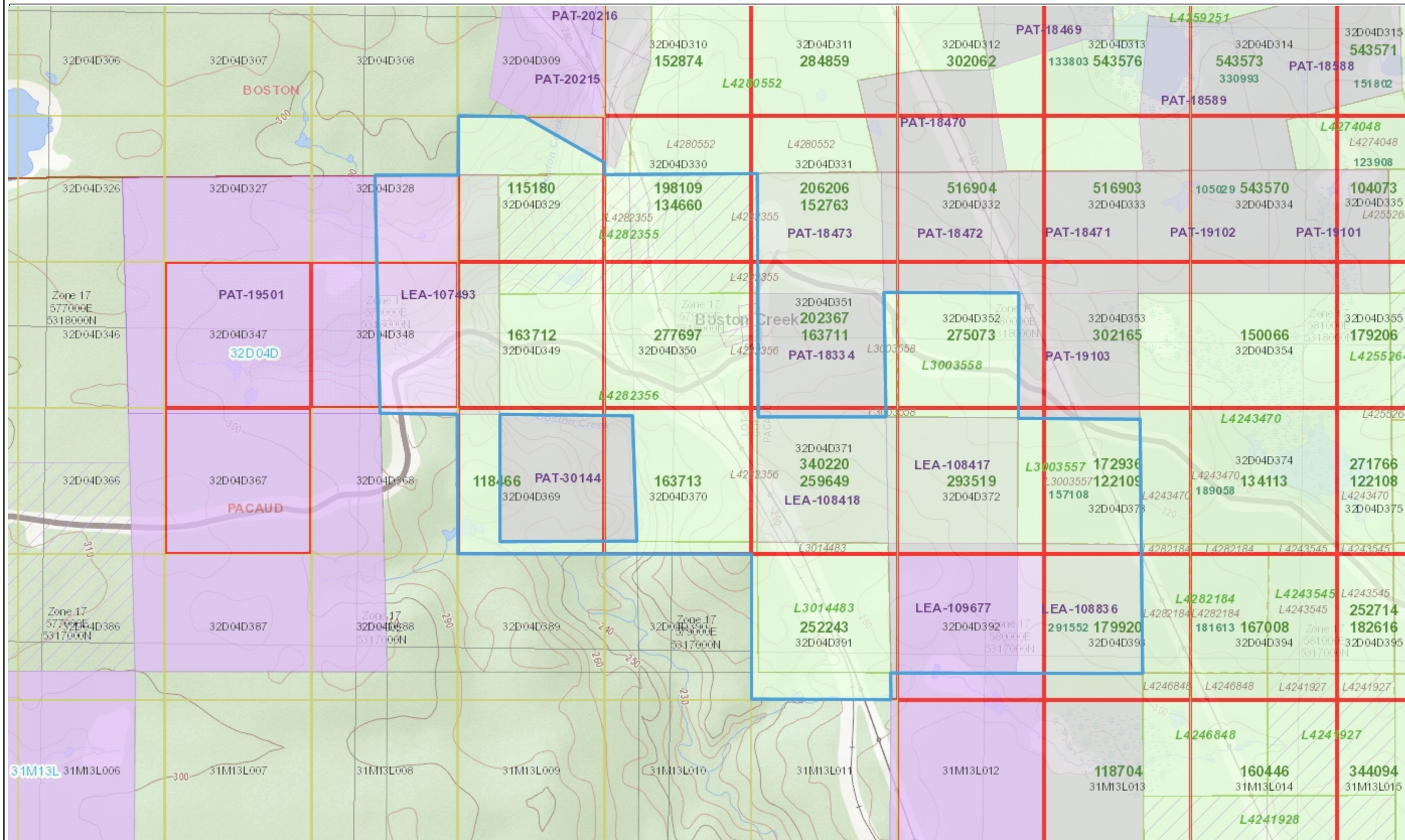


Base map and legend sourced from Map No. 1957-4, Boston Township and part of Pacaud Township

Boston Creek Property Outline

Barry Hollinger Mine





Legend

- Provincial Grid Cell**
 - Available
 - Pending
 - Unavailable
- Mining Claim**
- Mining Lease**
 - Surface Rights Only
 - Mining Rights Only
 - Surface and Mining Rights
- Mining Licence of Occupation**
 - Surface Rights Only
 - Mining Rights Only
 - Surface and Mining Rights
- Mining Patent**
 - Surface Rights Only
 - Mining Rights Only
 - Surface and Mining Rights
- Boundary Claim**
- Legacy Claim**
- Mining Claim - History**
- Mining Land Tenure - History**
- Mining Division**
- MNDM Townships and Areas**
- Provincial Grid Group**
- Non-Mining Land Tenure**
 - Patent, Surface Rights Only
 - Patent, Mining Rights Only
 - Patent, Surface and Mining Rights
 - Lease, Surface Rights Only
 - Lease, Mining Rights Only
 - Lease, Surface and Mining Rights
 - Water Power Lease Agreement
 - Licence of Occupation, Surface Rights Only
 - Licence of Occupation, Surface and Mining Rights
 - Order-in-Council
- Alienation**
 - Withdrawal
 - Notice
- UTM Grid Labels 1K**
- UTM Grid 1K
- Indian Reserve



Projection: Web Mercator



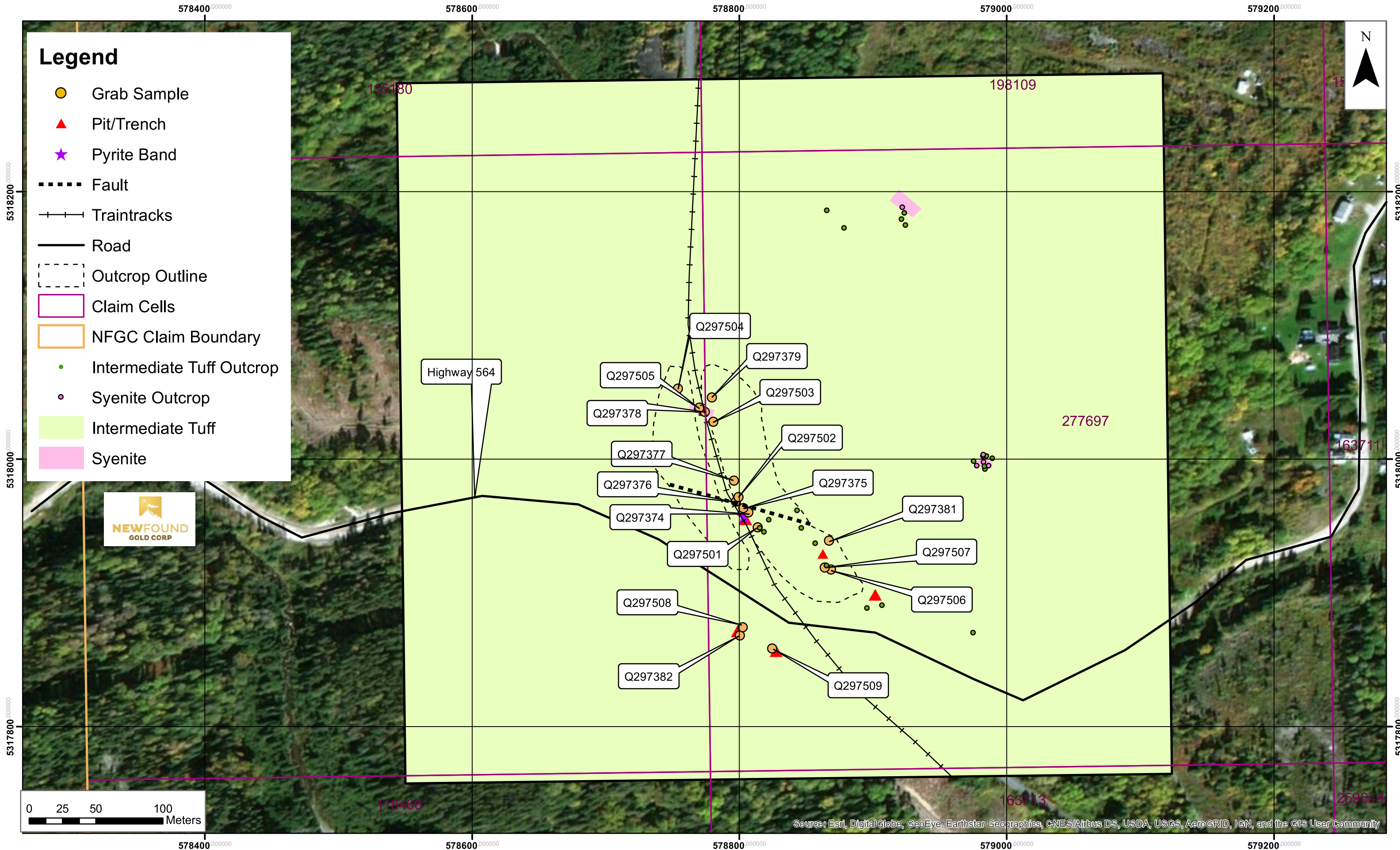
The Ontario Ministry of Northern Development and Mines shall not be liable in any way for the use of, or reliance upon, this map or any information on this map. This map should not be used for: navigation, a plan of survey, routes, nor locations.

Imagery Copyright Notices: Ontario Ministry of Natural Resources and Forestry; NASA Landsat Program; First Base Solutions Inc.; Aéro-Photo (1961) Inc.; DigitalGlobe Inc.; U.S. Geological Survey.



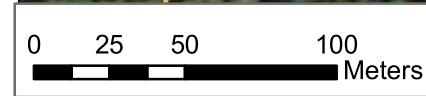
Boston Creek Property 1:2500

Autumn 2018 Grab Samples



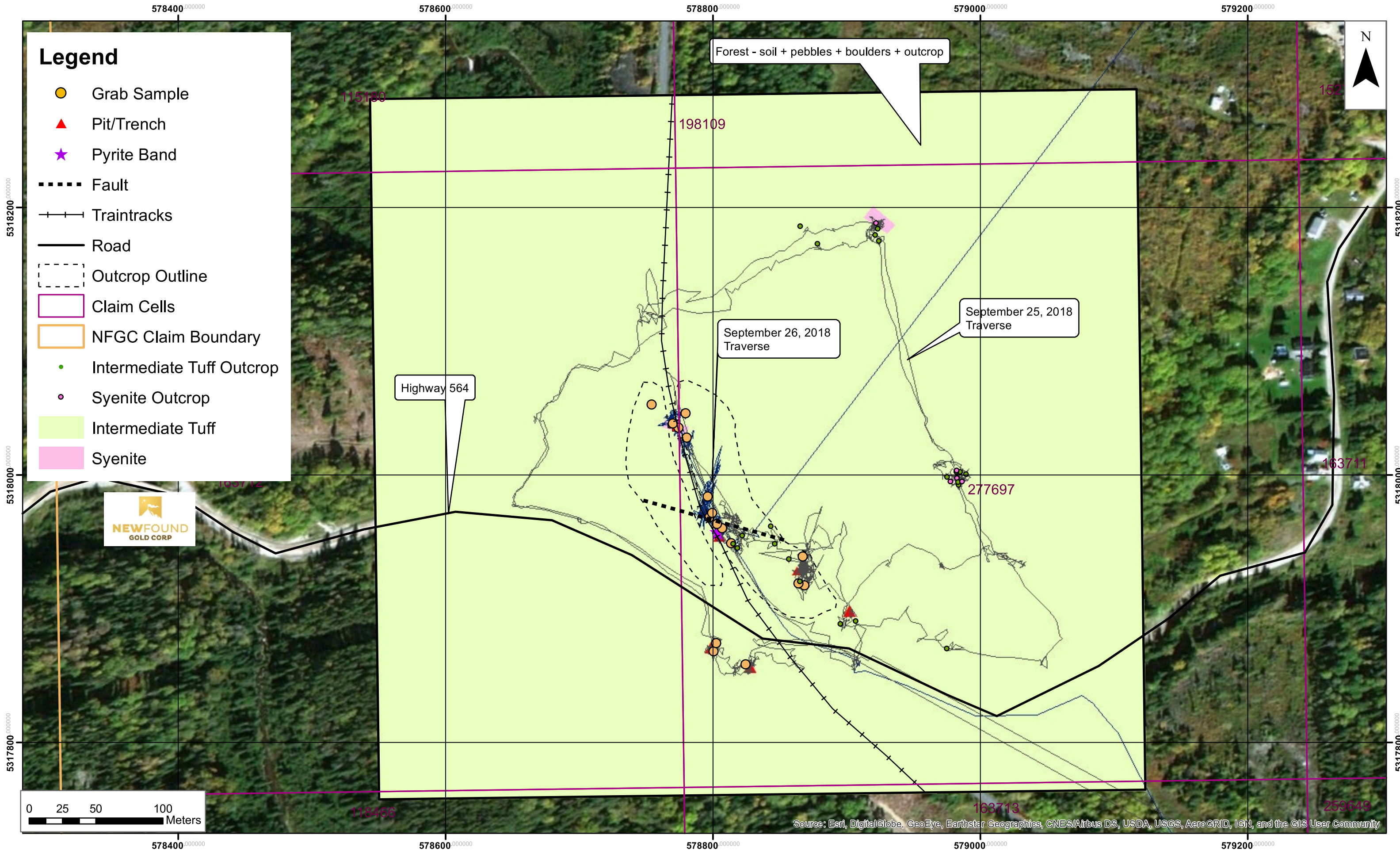
Legend

- Grab Sample
- ▲ Pit/Trench
- ★ Pyrite Band
- Fault
- +--- Traintracks
- Road
- - - - - Outcrop Outline
- Claim Cells
- NFGC Claim Boundary
- Intermediate Tuff Outcrop
- Syenite Outcrop
- Intermediate Tuff
- Syenite



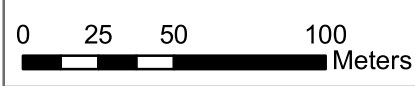
Source: Esri, DigitalGlobe, GeoEye, Earthstar Geographics, CNES/Airbus DS, USDA, USGS, AeroGRID, IGN, and the GIS User Community

Boston Creek Property 1:2500 Autumn 2018 Traverses



Legend

- Grab Sample
- ▲ Pit/Trench
- ★ Pyrite Band
- Fault
- +--- Traintracks
- Road
- - - - - Outcrop Outline
- Claim Cells
- NFGC Claim Boundary
- Intermediate Tuff Outcrop
- Syenite Outcrop
- Intermediate Tuff
- Syenite



Source: Esri, DigitalGlobe, GeoEye, Earthstar Geographics, CNES/Airbus DS, USDA, USGS, AeroGRID, IGN, and the GIS User Community