

We are committed to providing [accessible customer service](#).

If you need accessible formats or communications supports, please [contact us](#).

Nous tenons à améliorer [l'accessibilité des services à la clientèle](#).

Si vous avez besoin de formats accessibles ou d'aide à la communication, veuillez [nous contacter](#).

Title Page

2022 work report for the Dead Horse Creek East Zone.

Claim numbers 555470 and 555471.

Walsh Township, Thunder Bay Mining Division. Provincial Grid Cell 42D15B071 and 42D15B072.

Work was completed on 2022/07/13 by Peter Gehrels and Allan Onchulenko.

Work report was completed on 2022/07/30.

Work report was completed and submitted by Peter Gehrels, Client #406287

2022 Work Report for Dead Horse Creek East Property.

Introduction:

The Following report is of exploration work completed on claim # 555470 and 555471 on July 13th of 2022 by Prospectors Peter Gehrels and Allan Onchulenko .

One day was spent by Peter Gehrels and Allan Onchulenko on these two claims to Firstly inspect and sample a Rusty Shear zone previously located at 16U 523792 5407324. We call this the East Showing. We also wanted to inspect the D.A Michano Sr. occurrence (<http://www.geologyontario.mndm.gov.on.ca/mndmfiles/mdi/data/records/MDI42D15SE00012.html>) which we had previously failed to locate as the MDI coordinates are off. We also hoped to spend some time covering areas we had not previously prospected.

Location and access:

The two claims are located approximately 27km East of Terrace Bay on Highway 17 and it actually cuts right through the claims. Dead Horse Creek road gives access cutting North through the claims.

Claims:

There are two claims in my name 555470 and 555471 that all this years work was done on but we also hold seven additional claims in Allan's name directly south that holds the Dead Horse south workings. These are 716179, 716180, 716175, 716178, 176174, 716176 and 716177.

Exploration History:

The area has a long history dating back to 1921 and starting with The Dead Horse (south) Prospect. 1921: Prospecting; Mr. Darling. Mineralized vein located at this time. 1948-1950: Occurrence was staked by Seaboard Oil and Mines Limited and subsequently optioned to Brae Brest Gold Mines Ltd. who planned to conduct surface exploration and diamond drilling. It is not known if this work was performed. 1952: Building construction, shaft sinking (2 compartment shaft 15.5 m deep), drifting commenced at 14.3 m and was continued in a westerly direction for 77.4m, diamond drilling (14 holes totalling 1681 m); Saratoga Explorations Limited. The drifting failed to intersect the downward extension of the No.1 vein, all but 2 of the surface drill holes did, however intersect the vein. 1953-1967: The occurrence was staked several times by various parties but no work was recorded. 1968: Unspecified manual and mechanical work, geochemical and geophysical (EM) surveys and diamond drilling (1 hole 85 m in length); L. Hannon. 1970: Trenching and diamond drilling (2 holes totalling 62.8 m); L. Robinson. 1973-1974: Power stripping (bulldozer); R. McCabe. 1975: Power stripping; R. McCabe 1978: Power stripping; R. McCabe. 1980: Unspecified surface work; R. McCabe. 1983: Unspecified amount of diamond drilling; R. McCabe. Property examination and lithogeochemical sampling; SH Resident Geologist staff (OGS). 1986-1987: Diamond drilling, sampling and dewatering of the shaft; R. McCabe. Property examination, lithogeochemical

sampling; SH Resident Geologist staff (OGS). 2014: Claim staked by M.J. Gaudreau and transferred to T.P.H. Martel.

And to the north The Dead Horse Creek (north) Prospect was found in 1947 and also has a long history including 1947-1948: Unspecified surface exploration including sampling followed by diamond drilling (20 holes totalling 1531 m); J.C. Bryne/American Yellowknife Gold Mines Ltd. 1951: Interest in the property was transferred to MacKellar Bay Mines. 1954: Unspecified work including diamond drilling in excess of 1300 ft on claims neighbouring the occurrence; MacKellar Bay Mines. 1956: Grab sampling; MacKellar Bay Mines (?). 1962: Prospect was restaked by T. Gustrafson. 1963: Whitegate Mining Co. Ltd optioned the prospect. 1964: The claims lapsed and were restaked by J. Halonen. 1965: All interest was transferred to Zenmac Metal Mines Ltd. Geological and airborne geophysical surveys; Keevil Mining Group. 1968: The claims lapsed and were restaked by M. Pitkanen. Geophysical (EM) and geochemical surveys; M. Pitkanen. 1969: All interest was transferred to Halren Mines Ltd., who drilled 11 DDH, totalling 3218 ft. 1970: Halren optioned the property to Molybdenum Corp. of America, however the option was dropped. 1972: Halren transferred all interest to R. Pitkanen. 1974: All interest was transferred to J. Halonen. Unspecified work; Arcap Diversified Inc and option agreement terms are unknown. 1977: 21 year lease issued. 1979: Stockpiling of handcobbed ore material; J.E. Ayrhart Mining Development Ltd. A portable floatation mill was ordered but the production plans were abandoned in 1980 and the claims lapsed. 1981: Claims were restaked by J. Halonen. 1983: A 6 claim option was transferred to Stralak Resources Inc. Diamond drilling (6 holes); Stralak Resources Inc. and North Kirkland Mines. Follow up work, including bulk sampling, was planned pending acquisition of new financing. It is not known if this work was completed. Property examination and lithogeochemical sampling; OGS Resident geologist staff. 1986: Property examination and lithogeochemical sampling; OGS Resident geologist staff. 1988: Belmoral Mines conducted IP, mag and VLF surveys. 2010: Claims were staked by D. Michano, B. Gionet, J.G. Michano and W. Michano. 2011: claim staking group conducted prospecting and sampling. 2014: Claim was restaked by D. Michano, J.G. Michano and B. Gionet.

Although this prospect is not on the property the drill program did extend through these two claims.

The D.A. Michano Sr. Occurrence was first discovered in 1983 and this is the reported history: 1983: Prospecting; D.A. Michano. The sulphide mineralization comprising the occurrence was discovered at this time. Property examination and lithogeochemical sampling; OGS Resident Geologist staff. 1985: Mechanical surface work; D.A. Michano. 1988: Geological mapping, ground geophysical surveys (EM, MAG and I.P.), trenching and sampling; Belmoral Mines Ltd. 1989: Diamond drilling (5 holes totalling 552 m) was completed on adjoining claims; Belmoral Mines Ltd. Property examination and lithogeochemical sampling; OGS Resident geologist staff. 2011: Canadian International Minerals carried out prospecting and sampling.

Although I read through the many reports of activity for the area there is no reported history for the East Zone we earlier rediscovered on claim# 555470.

Regional Geology:

Province: Superior

Subprovince: Wawa

Terrane: Wawa-Abitibi

Belt: Schreiber-Hemlo

Geological Age: Archean

Local Geology:

Dec 07, 2005 (D McKay) - The property is underlain by early Precambrian basic to acid volcanics interbedded with greywacke and arkose which have been intruded by granite, quartz feldspar porphyries and quartz veins. the general strike of the formation is about north 50 degrees west and the dip varies from vertical to steeply to the south. The showing consists of sheared basic volcanics, biotite altered sediments and pyrite-pyrrhotite-graphite iron formation. Quartz veins and sweats with minor sulphides on fractures are common in the shear.

These comments are from MDI42D15SE00012

(<http://www.geologyontario.mndm.gov.on.ca/mndmfiles/mdi/data/records/MDI42D15SE00012.htm>) but seem to be a good representation for the rest of the claim.

Mineralization:

Dec 07, 2005 (D McKay) - A sheared iron formation striking from 283 to 310 degrees and dipping 82 degrees NE was observed at the Michano occurrence. Pyrite and pyrrhotite are present as well as a carbonaceous/graphitic metasedimentary rock. The iron formation and chemical metasedimentary rocks appear to be hosted by mafic metavolcanic rocks. Several pits on the east side of the Dead Horse road were observed up to 1 m by 2 m in size. There is evidence of quartz veining. On the west side of the Dead Horse road a shear zone striking 80 degrees and dipping 78 degrees S to vertical was observed hosted by phyllitic metasedimentary rocks and mafic metavolcanic rocks. Bull-white quartz veins and boudins up to 70 cm wide were observed. Minor chlorite was present as seams within the veins. Grab samples collected from the occurrence in 1983 and 1989 by OGS Resident Geologist staff returned assay values which varied from nil to 0.004 opt Au, nil to 0.41 opt Ag, 325 ppm Cu and 170 ppm Ni. (These comments were taken from the same MDI for the DA Michano Sr Occurrence but the actual MDI location was off to the west, seemingly in the wrong location and we had no luck locating the any of pits on the east side of the road. It looks like this part of the road may have been recently altered or moved.)

The Mineralization for the East Zone Pits is mainly sphalerite with minor chalcopryrite and pyritite. For the Creek showing it was chalcopryrite alone.

For the highway area there was sphalerite with minor pyritite and pyrite.

2022 Work Program:

On the 13th of July we spent the day on the two units 555470 and 555471. We started with a west to east traverse just north of the highway and then north and back west to what we are referring to as the Dead Horse East zone. It is a 12m wide zone exposed on the side of the hill for 10m that is very rusty sheared sedimentary zone. Pit 1 was the most south 16U 523792 5407327 and measured about 1.5 m wide by 2m tall and was very rusty sheared seds with quartz banding. There is up too 25% mineralization mostly sphalarite with some chalcopryrite and pyritite and the odd pyrite. Pit 2 was the furthest north at 16U 523785 5407322 measuring 1.8 wide and over 2 high and was the most rusty and even darker finer grained almost like slate with squished intermittent quartz eyes and veins. It contains 20% mineralization mostly sphalerite with some pyritite. Pit 3 was more of just a small indentation with a pile of debris slightly lower on the hill at 16U 523782 5407319. Less rusty than pit 2, pit 3 was the same very fine grained, very dark slate type seds with squished quartz eyes and broken veins. It contains 15%+ sphalerite with some pyritite and minor pyrite.

From here we traversed west back to the Dead Horse Creek road then heading north and tried to find the D.A Michano Sr. showing. We spread out but could not find it at the

location marked on the MDI but did see general contact\transition from a Grey coarse mafic to Greywacke sedimentary. We decided to just do a loop to the west and once we hit the creek we started to head north in the creek bed. Soon we came into a dry rapid/waterfall area that was the Grey mafic with numerous milky white quartz veins. We examined a few of the larger ones (up too 20 cm wide and exposed across the width of the creek bed) and found one that had sporadic larger chunks of chalcopryite at 16U 523306 5407484 and took a sample for assay. We then continued up the creek bed to northern claim line where we headed further west and then back down south sometimes following an old road. We did not see much of interest and when we hit the highway we followed a trail just to the north of it back east to the road where we went back north to try and find the Michano showing one more time. This time we followed the rusty band visible in a rock cut and after a bit of searching we found a 60 to 80 cm wide quartz vein that had been worked previously. It was a sugary white quartz vein exposed for about 15m and seemed to contain 10%+ chalcopryite with minor sphalerite and minor galena. This was at 16U 523464 5407477 and we feel this was part of the original D.A Michano occurrence.

We then headed back to the truck and went just east on the highway a rusty section in the rock cut at 16 U 523342 5407184. It was a sheared seds and quartz rusty on the out side and a grey shade inside with 5 to 10% mineralization consisting of mostly pyritite blebs with some chalcopryite and sphalerite. We took one sample that was a chunk that fallen off of here. We then drove the small road to the south at this location as the new hydro line had used it as an access point and made it into a real road. From this point we were out of time and headed back to Thunder Bay.

Sample Descriptions:

We took 6 samples in total for the day.

The first sample was from the East Zone at pit 1. Pit 1 was the most south 16U 523792 5407327 and measured about 1.5 m wide by 2m tall and was very rusty sheared seds with quartz banding. There is up too 25% mineralization mostly sphalarite with some chalcopryite and pyritite and the odd pyrite.

The second sample was from the East zone pit 2. Pit 2 was the furthest north at 16U 523785 5407322 measuring 1.8 wide and over 2 high and was the most rusty and even darker finer grained almost like slate with squished intermittent quartz eyes and veins. It contains 20% mineralization mostly sphalerite with some pyritite.

The Third sample was from the East zone pit 3. Pit 3 was more of just a small indentation with a pile of debris slightly lower on the hill at 16U 523782 5407319. Less rusty than pit 2, pit 3 was the same very fine grained, very dark slate type seds with squished quartz eyes and broken veins. It contains 15%+ spahlerite with some pyritite and minor pyrite.

The fourth sample was from The Creek showing. It was hosted in Grey mafics with numerous milky white quartz veins. We examined a few of the larger ones (up to 20 cm wide and exposed across the width of the creek bed) and found one that had sporadic larger chunks of chalcopryite at 16U 523306 5407484.

The fifth sample was from the D.A Michano Occurrence. We found a 60 to 80 cm wide quartz vein that had been worked previously. It was a sugary white quartz vein exposed for about 15m and seemed to contain 10%+ chalcopryite with minor sphalerite and minor galena located at 16U 523464 5407477.

The sixth sample was from the Highway cut and was sheared seds and quartz rusty on the out side and a grey shade inside with 5 to 10% mineralization consisting of mostly pyritite blebs with some chalcopryrite and sphalerite located at 16 U 523342 5407184.

Conclusions and recommendations:

We were very pleased with the East zone. Some very good looking samples. And with no previous work reported we are interested to see what the results will be. We will next focus on further stripping to see if we can extend the zone.

The Creek showing looks like it could be an extension of the Michano Occurrence and if we get any decent numbers we will explore in-between the two locations.

The Highway showing also looks promising and if the assays are encouraging we will explore north of the rock cut. It seems like this lines up with the way the Dead Horse north drill program and could be the southern extension of this.

Work Claimed:

For Claims # 555470 and 555471 I am claiming 1 day of work for Two people @ \$350 per day = \$700.

I am Claiming \$.50 per km for a return trip of 460 km for \$230.

I am also claiming one day work for compiling the repot at \$350.

Total being claimed is \$1280

References:

All the historical information was taken from the following MDI's.

<http://www.geologyontario.mndm.gov.on.ca/mndmfiles/mdi/data/records/MDI42D15SE00018.html>

<http://www.geologyontario.mndm.gov.on.ca/mndmfiles/mdi/data/records/MDI42D15SE00012.html>

<http://www.geologyontario.mndm.gov.on.ca/mndmfiles/mdi/data/records/MDI42D15SE00028.html>

<http://www.geologyontario.mndm.gov.on.ca/mndmfiles/mdi/data/records/MDI42D15SE00014.html>



ALS Canada Ltd.
 2103 Dollarton Hwy
 North Vancouver BC V7H 0A7
 Phone: +1 604 984 0221 Fax: +1 604 984 0218
 www.alsglobal.com/geochemistry

To: PETER GEHRELS
 406 COLLEGE ST.
 THUNDER BAY ON P7A 5K5

Page: 1
 Total # Pages: 2 (A - D)
 Plus Appendix Pages
 Finalized Date: 8-SEP-2022
 This copy reported on 9-SEP-2022
 Account: PGFYQIYN

CERTIFICATE TB22229285

Project: DH

This report is for 6 samples of Rock submitted to our lab in Thunder Bay, ON, Canada on 16-AUG-2022.

The following have access to data associated with this certificate:

PETER GEHRELS		
---------------	--	--

SAMPLE PREPARATION	
ALS CODE	DESCRIPTION
WEI-21	Received Sample Weight
DISP-01	Disposal of all sample fractions
CRU-QC	Crushing QC Test
LOG-22	Sample login - Rcd w/o BarCode
PUL-QC	Pulverizing QC Test
CRU-31	Fine crushing - 70% <2mm
SPL-21	Split sample - riffle splitter
PUL-31	Pulverize up to 250g 85% <75 um

ANALYTICAL PROCEDURES		
ALS CODE	DESCRIPTION	INSTRUMENT
ME-MS41	Ultra Trace Aqua Regia ICP-MS	

This is the Final Report and supersedes any preliminary report with this certificate number. Results apply to samples as submitted. All pages of this report have been checked and approved for release.
 ***** See Appendix Page for comments regarding this certificate *****

Signature: 
 Saa Traxler, Director, North Vancouver Operations



ALS Canada Ltd.
 2103 Dollarton Hwy
 North Vancouver BC V7H 0A7
 Phone: +1 604 984 0221 Fax: +1 604 984 0218
 www.alsglobal.com/geochemistry

To: PETER GEHRELS
 406 COLLEGE ST.
 THUNDER BAY ON P7A 5K5

Page: 2 - A
 Total # Pages: 2 (A - D)
 Plus Appendix Pages
 Finalized Date: 8-SEP-2022
 Account: PGFYQIYN

Project: DH

CERTIFICATE OF ANALYSIS TB22229285

Sample Description	Method Analyte Units LOD	WEI-21 Recvd Wt. kg	ME-MS41 Ag ppm	ME-MS41 Al %	ME-MS41 As ppm	ME-MS41 Au ppm	ME-MS41 B ppm	ME-MS41 Ba ppm	ME-MS41 Be ppm	ME-MS41 Bi ppm	ME-MS41 Ca %	ME-MS41 Cd ppm	ME-MS41 Ce ppm	ME-MS41 Co ppm	ME-MS41 Cr ppm	ME-MS41 Cs ppm
		0.02	0.01	0.01	0.1	0.02	10	10	0.05	0.01	0.01	0.01	0.02	0.1	1	0.05
DH001		1.47	1.75	0.41	12.6	0.02	<10	<10	0.15	2.12	0.13	4.85	27.3	119.0	15	0.08
DH002		1.40	0.57	1.49	4.3	<0.02	<10	30	0.67	0.70	0.11	2.24	29.2	66.6	9	0.44
DH003		0.96	0.45	1.49	2.8	<0.02	<10	30	0.63	0.55	0.12	2.23	22.4	47.0	10	0.28
DH004		1.20	2.47	0.28	3.4	<0.02	<10	110	0.20	3.61	1.76	0.15	12.75	25.5	29	0.47
DH005		0.71	0.01	0.04	0.2	<0.02	<10	<10	<0.05	0.01	0.33	0.02	0.23	0.4	11	0.07
DH006		0.69	0.12	2.49	1.5	<0.02	<10	<10	0.22	0.30	1.88	0.06	10.60	46.0	7	0.62



ALS Canada Ltd.
 2103 Dollarton Hwy
 North Vancouver BC V7H 0A7
 Phone: +1 604 984 0221 Fax: +1 604 984 0218
 www.alsglobal.com/geochemistry

To: PETER GEHRELS
 406 COLLEGE ST.
 THUNDER BAY ON P7A 5K5

Page: 2 - B
 Total # Pages: 2 (A - D)
 Plus Appendix Pages
 Finalized Date: 8-SEP-2022
 Account: PGFYQIYN

Project: DH

CERTIFICATE OF ANALYSIS TB22229285

Sample Description	Method	MS41	MS41	MS41	MS41	MS41	MS41	MS41	MS41	MS41	MS41	MS41	MS41	MS41	MS41	
	Analyte	Cu	Fe	Ga	Ge	Hf	Hg	In	K	La	Li	Mg	Mn	Mo	Na	Nb
	Units	ppm	%	ppm	ppm	ppm	ppm	ppm	%	ppm	ppm	%	ppm	ppm	%	ppm
	LOD	0.2	0.01	0.05	0.05	0.02	0.01	0.005	0.01	0.2	0.1	0.01	5	0.05	0.01	0.05
DH001		846	18.40	3.33	0.19	1.93	0.04	1.010	0.01	12.4	6.1	0.47	182	66.8	0.08	0.42
DH002		444	10.35	7.78	0.15	2.89	<0.01	0.422	0.14	13.9	24.7	0.57	206	6.39	0.04	<0.05
DH003		326	10.70	7.06	0.12	2.02	<0.01	0.407	0.11	10.7	24.2	0.53	239	6.59	0.06	<0.05
DH004		98.9	3.01	1.34	0.05	0.24	<0.01	0.011	0.10	6.4	1.4	0.33	277	1.63	0.05	0.38
DH005		6.2	0.51	0.15	<0.05	<0.02	<0.01	<0.005	0.01	<0.2	0.3	0.01	119	0.12	0.01	<0.05
DH006		94.3	8.62	13.00	0.15	0.12	<0.01	0.044	0.02	4.1	31.9	2.80	852	0.22	0.09	<0.05

***** See Appendix Page for comments regarding this certificate *****



ALS Canada Ltd.
 2103 Dollarton Hwy
 North Vancouver BC V7H 0A7
 Phone: +1 604 984 0221 Fax: +1 604 984 0218
 www.alsglobal.com/geochemistry

To: PETER GEHRELS
 406 COLLEGE ST.
 THUNDER BAY ON P7A 5K5

Page: 2 - C
 Total # Pages: 2 (A - D)
 Plus Appendix Pages
 Finalized Date: 8-SEP-2022
 Account: PGFYQIYN

Project: DH

CERTIFICATE OF ANALYSIS TB22229285

Sample Description	Method Analyte Units LOD	ME-MS41	ME-MS41	ME-MS41	ME-MS41	ME-MS41	ME-MS41	ME-MS41	ME-MS41	ME-MS41	ME-MS41	ME-MS41	ME-MS41	ME-MS41	ME-MS41	
		Ni ppm	P ppm	Pb ppm	Rb ppm	Re ppm	S %	Sb ppm	Sc ppm	Se ppm	Sn ppm	Sr ppm	Ta ppm	Te ppm	Th ppm	Ti %
		0.2	10	0.2	0.1	0.001	0.01	0.05	0.1	0.2	0.2	0.2	0.01	0.01	0.2	0.005
DH001		517	220	175.0	0.2	0.006	>10.0	0.48	5.2	4.0	2.1	4.1	<0.01	7.27	4.7	0.059
DH002		317	300	17.4	8.9	0.011	9.25	1.50	2.2	5.8	2.2	22.2	<0.01	0.72	9.1	<0.005
DH003		242	270	14.8	4.2	0.013	7.05	1.37	1.7	4.3	1.4	33.2	<0.01	0.46	4.4	<0.005
DH004		23.6	230	53.1	3.7	0.002	1.52	<0.05	4.2	1.3	<0.2	51.9	<0.01	0.36	1.7	0.032
DH005		1.1	<10	0.3	0.5	<0.001	<0.01	<0.05	0.1	<0.2	<0.2	1.8	<0.01	<0.01	<0.2	<0.005
DH006		34.2	390	6.3	1.1	0.001	2.46	<0.05	23.6	0.7	0.2	13.4	<0.01	0.08	0.6	0.111



ALS Canada Ltd.
 2103 Dollarton Hwy
 North Vancouver BC V7H 0A7
 Phone: +1 604 984 0221 Fax: +1 604 984 0218
 www.alsglobal.com/geochemistry

To: PETER GEHRELS
 406 COLLEGE ST.
 THUNDER BAY ON P7A 5K5

Page: 2 - D
 Total # Pages: 2 (A - D)
 Plus Appendix Pages
 Finalized Date: 8-SEP-2022
 Account: PGFYQIYN

Project: DH

CERTIFICATE OF ANALYSIS TB22229285

Sample Description	Method Analyte Units LOD	ME-MS41	ME-MS41	ME-MS41	ME-MS41	ME-MS41	ME-MS41	ME-MS41
		Tl	U	V	W	Y	Zn	Zr
		ppm	ppm	ppm	ppm	ppm	ppm	ppm
		0.02	0.05	1	0.05	0.05	2	0.5
DH001		0.05	1.04	16	0.42	8.34	2570	64.8
DH002		0.13	2.03	8	0.18	6.90	1330	105.0
DH003		0.07	1.26	5	0.17	5.57	1430	77.3
DH004		0.05	0.72	15	1.50	6.01	11	10.8
DH005		<0.02	<0.05	1	<0.05	0.11	3	<0.5
DH006		0.03	0.13	219	0.19	9.42	118	4.1



ALS Canada Ltd.
 2103 Dollarton Hwy
 North Vancouver BC V7H 0A7
 Phone: +1 604 984 0221 Fax: +1 604 984 0218
 www.alsglobal.com/geochemistry

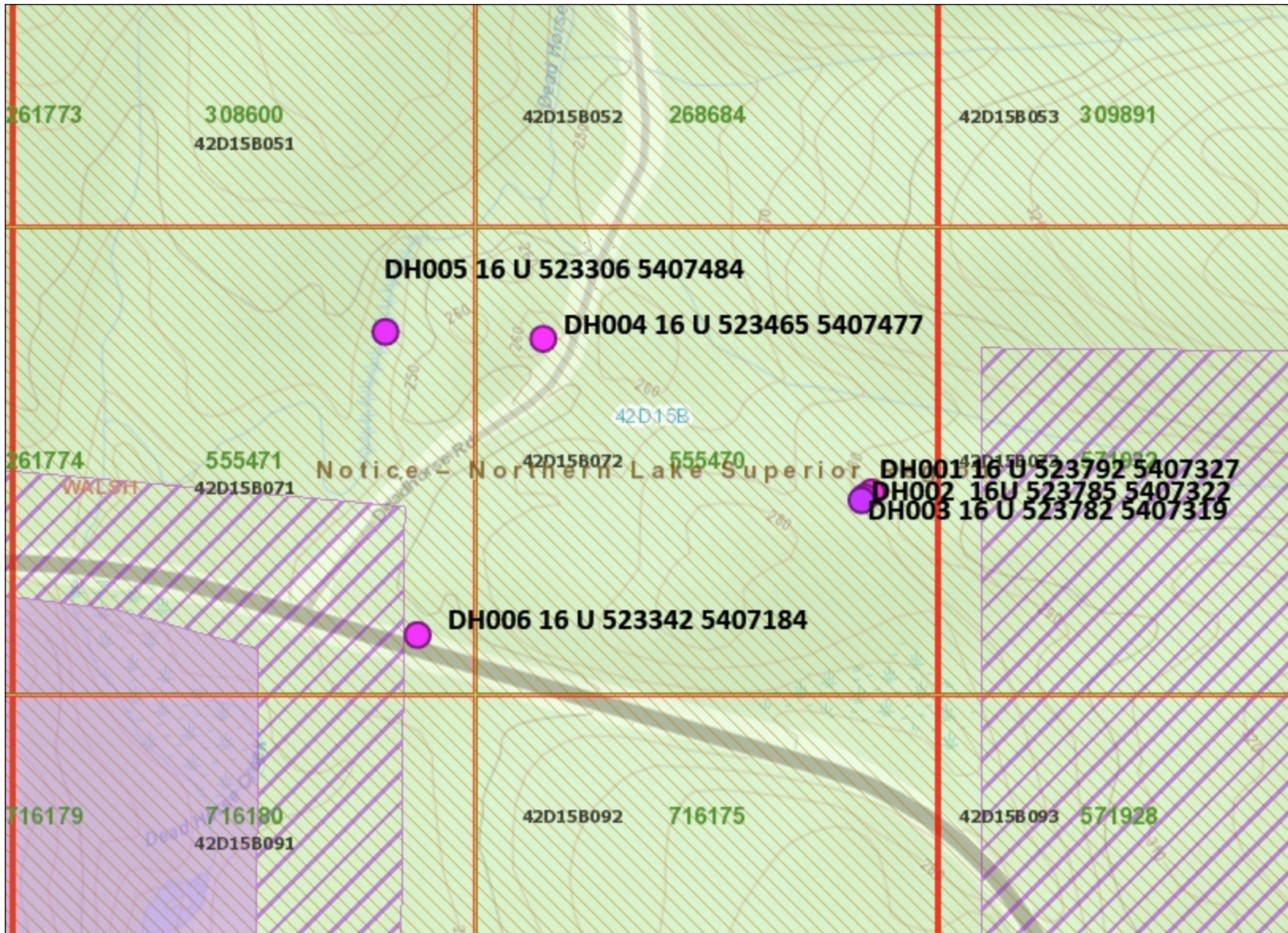
To: PETER GEHRELS
 406 COLLEGE ST.
 THUNDER BAY ON P7A 5K5

Page: Appendix 1
 Total # Appendix Pages: 1
 Finalized Date: 8-SEP-2022
 Account: PGFYQIYN

Project: DH

CERTIFICATE OF ANALYSIS TB22229285

	CERTIFICATE COMMENTS								
Applies to Method:	<p style="text-align: center;">ANALYTICAL COMMENTS</p> <p>Gold determinations by this method are semi-quantitative due to the small sample weight used (0.5g). ME-MS41</p>								
Applies to Method:	<p style="text-align: center;">LABORATORY ADDRESSES</p> <p>Processed at ALS Thunder Bay located at 645 Norah Crescent, Thunder Bay, ON, Canada</p> <table style="width: 100%; border: none;"> <tr> <td style="width: 33%;">CRU-31</td> <td style="width: 33%;">CRU-QC</td> <td style="width: 33%;">DISP-01</td> <td style="width: 17%;">LOG-22</td> </tr> <tr> <td>PUL-31</td> <td>PUL-QC</td> <td>SPL-21</td> <td>WEI-21</td> </tr> </table>	CRU-31	CRU-QC	DISP-01	LOG-22	PUL-31	PUL-QC	SPL-21	WEI-21
CRU-31	CRU-QC	DISP-01	LOG-22						
PUL-31	PUL-QC	SPL-21	WEI-21						
Applies to Method:	<p>Processed at ALS Vancouver located at 2103 Dollarton Hwy, North Vancouver, BC, Canada. ME-MS41</p>								



Legend

- Provincial Grid Cell**
 - Available
 - Pending
 - Unavailable
- Mining Claim**
 - Mining Claim
 - Boundary Claim
- Alienation**
 - Withdrawal
 - Notice
- MINES Administrative Boundaries**
 - MINES Townships and Areas
 - Geographic Lot Fabric
 - UTM Grid 1K
 - UTM Grid 10K
 - Mining Division
 - Mineral Exploration and Development Region
 - CLUPA Protected Area - Far North
 - Resident Geologist District
 - Federal Land Other
 - Native Reserves
- AMIS Sites**
 - AMIS Sites
 - AMIS Features
 - Drill Hole
 - Mineral Occurrences
- MLAS Mining History**
 - Withdrawal - History
 - Notice - History
 - Mining Claim - History
 - Mining Land Tenure - History
 - Legacy Claim
- Provincial Grid**
 - Provincial Grid 250K
 - Provincial Grid 50K
 - Provincial Grid Group
- Land Tenure**
 - Surface Rights
 - Mining Rights
 - Mining and Surface Rights
 - Order-in-Council

Those wishing to register mining claims should consult with the Provincial Mining Recorders' Office of the Ministry of Mines (MINES) for additional information on the status of the lands shown hereon. This map is not intended for navigational, survey, or land title determination purposes as the information shown on this map is compiled from various sources. Completeness and accuracy are not guaranteed. Additional information may also be obtained through the local Land Titles or Registry Office, or the Ministry of Natural Resources and Forestry. The information shown is derived from digital data available in the Provincial Mining Recorders' Office at the time of downloading from the Ministry of Mines (MINES) web site.



Imagery Copyright Notices: Ministry of Natural Resources and Forestry (MNR); NASA Landsat Program; First Base Solutions Inc.; Aéro-Photo (1961) Inc.; DigitalGlobe Inc.; U.S. Geological Survey.) web site.
© King's Printer for Ontario, 2022





Legend

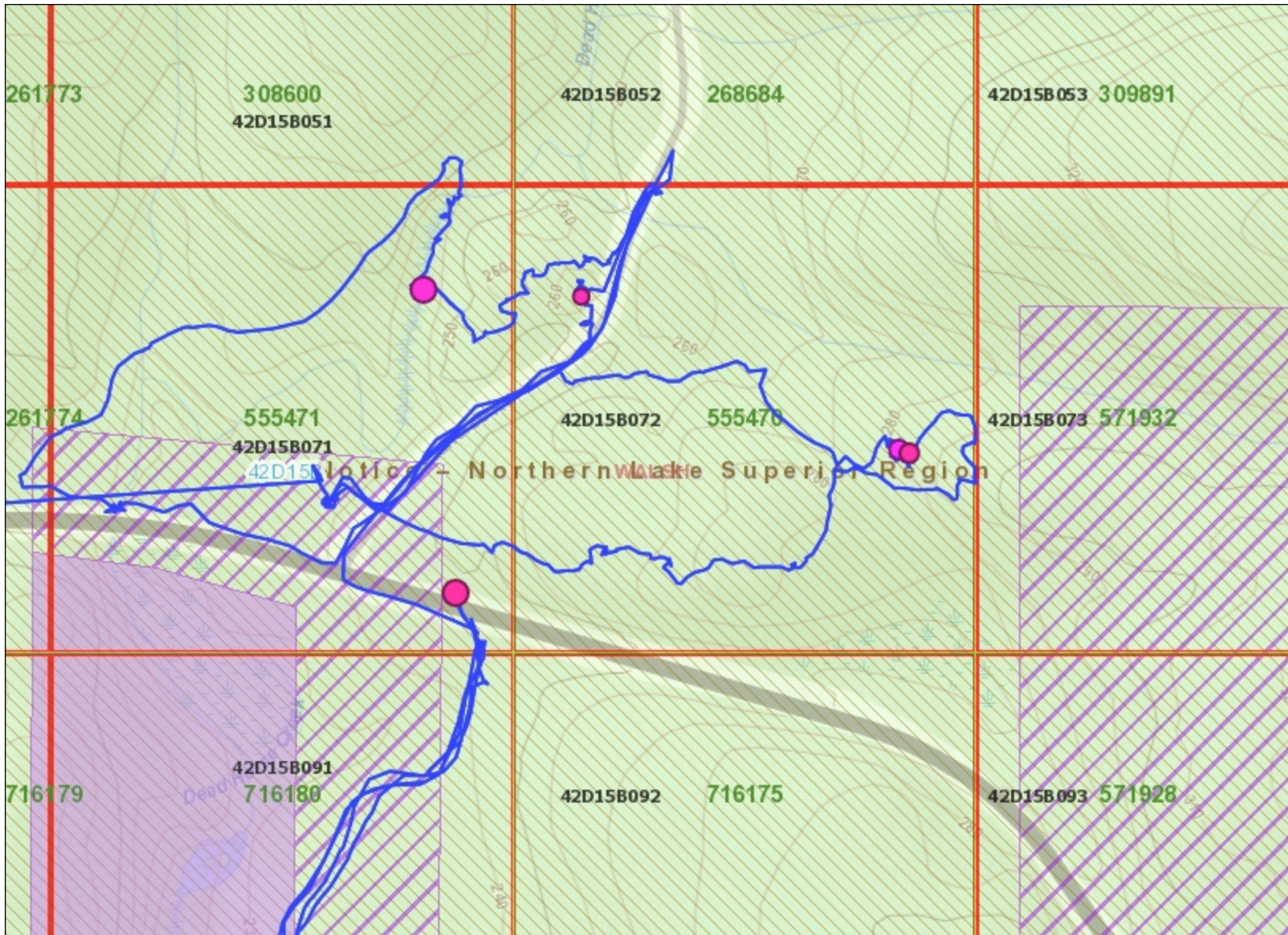
- Provincial Grid Cell**
 - Available
 - Pending
 - Unavailable
- Mining Claim**
 - Mining Claim
 - Boundary Claim
- Alienation**
 - Withdrawal
 - Notice
- NDM Administrative Boundaries**
 - NDM Townships and Areas
 - Geographic Lot Fabric
 - UTM Grid 1K
 - UTM Grid 10K
 - Mining Division
 - Mineral Exploration and Development Region
 - CLUPA Protected Area - Far North
 - Resident Geologist District
 - Federal Land Other
 - Native Reserves
- AMIS Sites**
 - AMIS Sites
 - AMIS Features
 - Drill Hole
 - Mineral Occurrences
- MLAS Mining History**
 - Withdrawal - History
 - Notice - History
 - Mining Claim - History
 - Mining Land Tenure - History
 - Legacy Claim
- Provincial Grid**
 - Provincial Grid 250K
 - Provincial Grid 50K
 - Provincial Grid Group
- Land Tenure**
 - Surface Rights
 - Mining Rights
 - Mining and Surface Rights
 - Order-in-Council

Those wishing to register mining claims should consult with the Provincial Mining Recorders' Office of the Northern Development and Mines (NDM) for additional information on the status of the lands shown hereon. This map is not intended for navigational, survey, or land title determination purposes as the information shown on this map is compiled from various sources. Completeness and accuracy are not guaranteed. Additional information may also be obtained through the local Land Titles or Registry Office, or the Natural Resources and Forestry. The information shown is derived from digital data available in the Provincial Mining Recorders' Office at the time of downloading from the Northern Development and Mines (NDM) web site.



Imagery Copyright Notices: Ontario Ministry of Northern Development, Mines, Natural Resources and Forestry; NASA Landsat Program; First Base Solutions Inc.; Aéro-Photo (1961) Inc.; DigitalGlobe Inc.; U.S. Geological Survey.
© Queen's Printer for Ontario, 2022





Legend

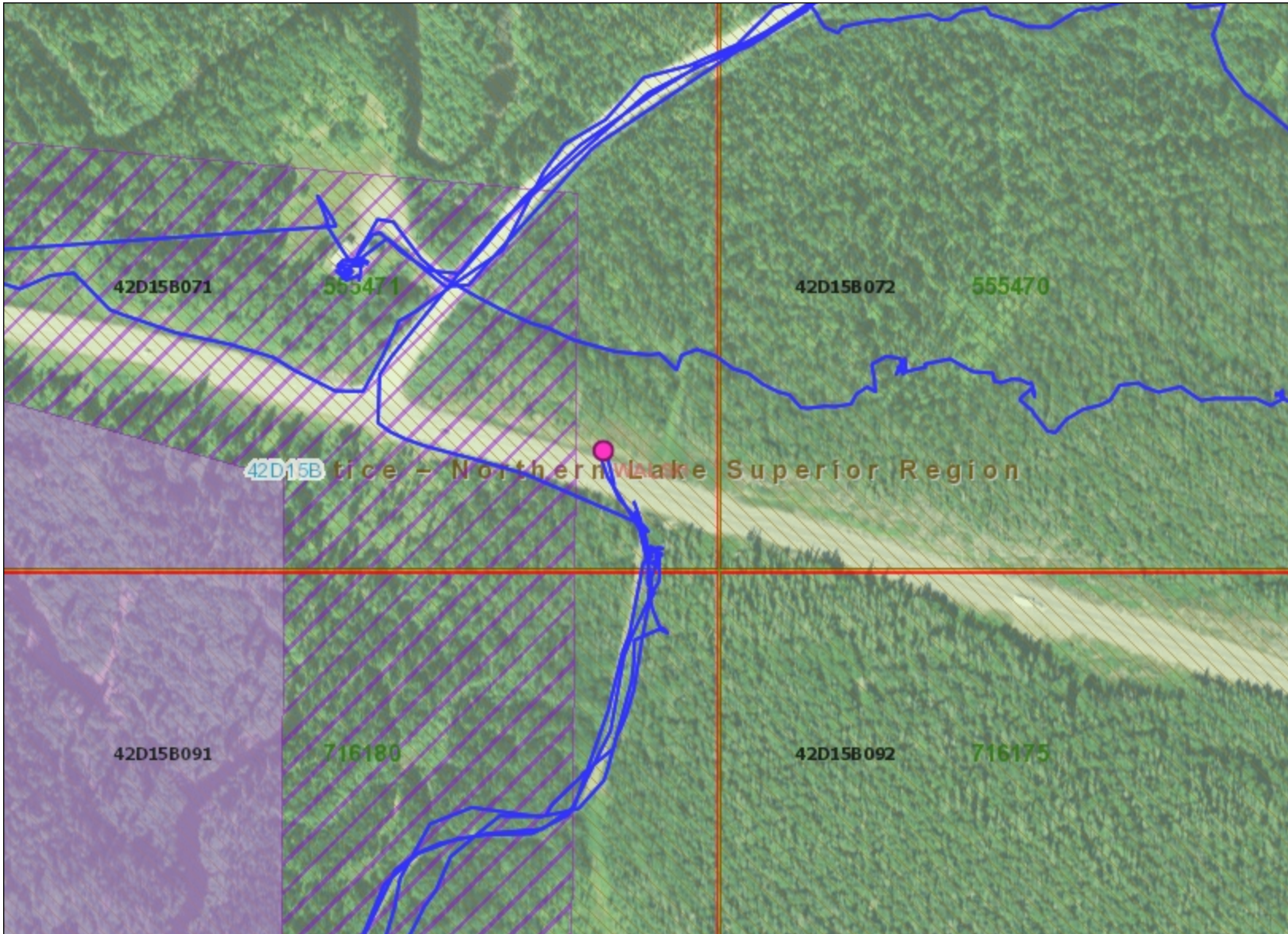
- Provincial Grid Cell**
 - Available
 - Pending
 - Unavailable
- Mining Claim**
 - Mining Claim
 - Boundary Claim
- Alienation**
 - Withdrawal
 - Notice
- NDM Administrative Boundaries**
 - NDM Townships and Areas
 - Geographic Lot Fabric
 - UTM Grid 1K
 - UTM Grid 10K
 - Mining Division
 - Mineral Exploration and Development Region
 - CLUPA Protected Area - Far North
 - Resident Geologist District
 - Federal Land Other
 - Native Reserves
- AMIS Sites**
 - AMIS Sites
 - AMIS Features
 - Drill Hole
 - Mineral Occurrences
- MLAS Mining History**
 - Withdrawal - History
 - Notice - History
 - Mining Claim - History
 - Mining Land Tenure - History
 - Legacy Claim
- Provincial Grid**
 - Provincial Grid 250K
 - Provincial Grid 50K
 - Provincial Grid Group
- Land Tenure**
 - Surface Rights
 - Mining Rights
 - Mining and Surface Rights
 - Order-in-Council

Those wishing to register mining claims should consult with the Provincial Mining Recorders' Office of the Northern Development and Mines (NDM) for additional information on the status of the lands shown hereon. This map is not intended for navigational, survey, or land title determination purposes as the information shown on this map is compiled from various sources. Completeness and accuracy are not guaranteed. Additional information may also be obtained through the local Land Titles or Registry Office, or the Natural Resources and Forestry. The information shown is derived from digital data available in the Provincial Mining Recorders' Office at the time of downloading from the Northern Development and Mines (NDM) web site.



Imagery Copyright Notices: Ontario Ministry of Northern Development, Mines, Natural Resources and Forestry; NASA Landsat Program; First Base Solutions Inc.; Aéro-Photo (1961) Inc.; DigitalGlobe Inc.; U.S. Geological Survey.
© Queen's Printer for Ontario, 2022





Legend

- Provincial Grid Cell**
 - Available
 - Pending
 - Unavailable
- Mining Claim**
 - Mining Claim
 - Boundary Claim
- Alienation**
 - Withdrawal
 - Notice
- NDM Administrative Boundaries**
 - NDM Townships and Areas
 - Geographic Lot Fabric
 - UTM Grid 1K
 - UTM Grid 10K
 - Mining Division
 - Mineral Exploration and Development Region
 - CLUPA Protected Area - Far North
 - Resident Geologist District
 - Federal Land Other
 - Native Reserves
- AMIS Sites**
 - AMIS Sites
 - AMIS Features
 - Drill Hole
 - Mineral Occurrences
- MLAS Mining History**
 - Withdrawal - History
 - Notice - History
 - Mining Claim - History
 - Mining Land Tenure - History
 - Legacy Claim
- Provincial Grid**
 - Provincial Grid 250K
 - Provincial Grid 50K
 - Provincial Grid Group
- Land Tenure**
 - Surface Rights
 - Mining Rights
 - Mining and Surface Rights
 - Order-in-Council

Those wishing to register mining claims should consult with the Provincial Mining Recorders' Office of the Northern Development and Mines (NDM) for additional information on the status of the lands shown hereon. This map is not intended for navigational, survey, or land title determination purposes as the information shown on this map is compiled from various sources. Completeness and accuracy are not guaranteed. Additional information may also be obtained through the local Land Titles or Registry Office, or the Natural Resources and Forestry. The information shown is derived from digital data available in the Provincial Mining Recorders' Office at the time of downloading from the Northern Development and Mines (NDM) web site.

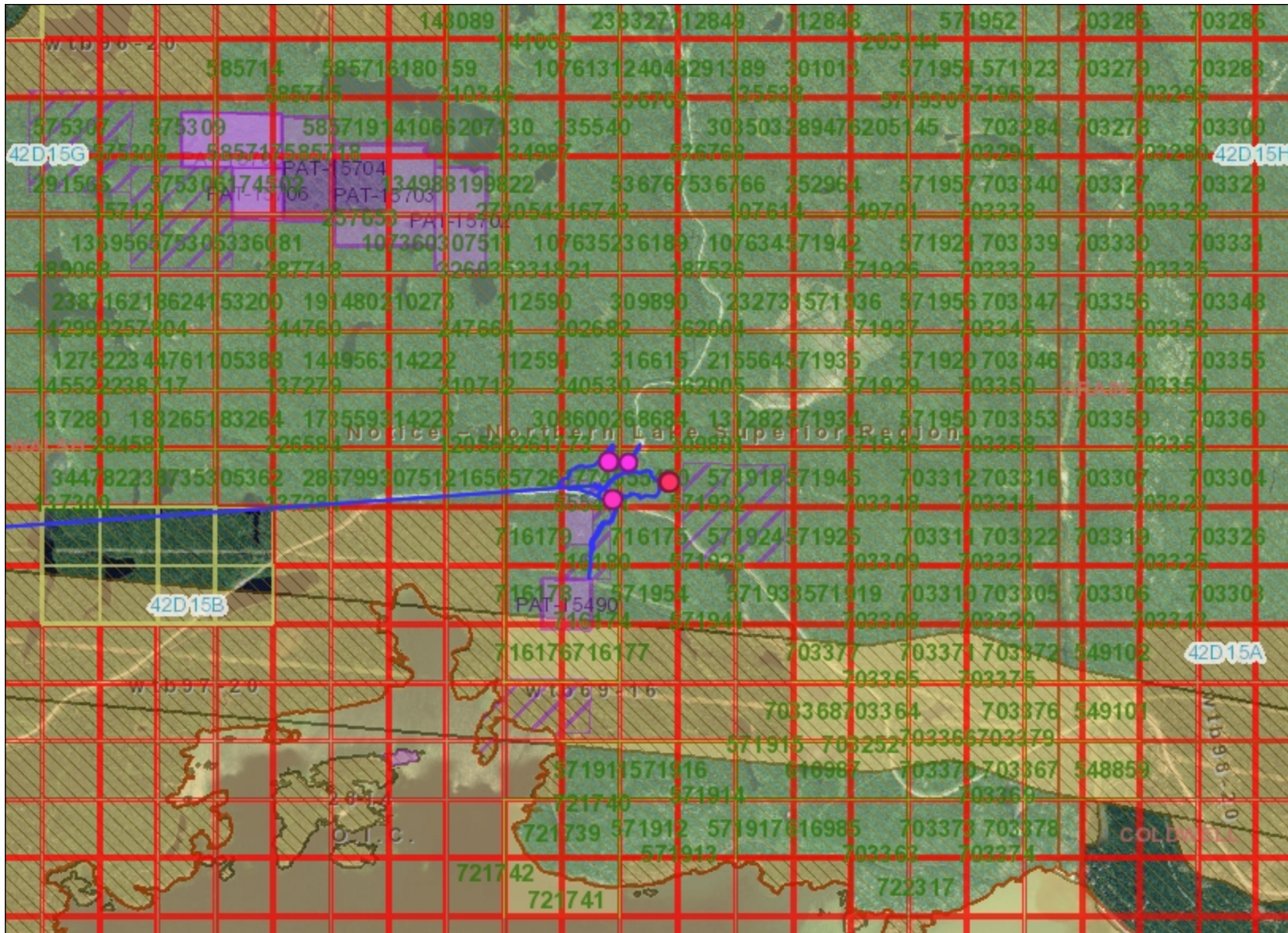
0 0.15 km

Projection: Web Mercator



Imagery Copyright Notices: Ontario Ministry of Northern Development, Mines, Natural Resources and Forestry; NASA Landsat Program; First Base Solutions Inc.; Aéro-Photo (1961) Inc.; DigitalGlobe Inc.; U.S. Geological Survey.
© Queen's Printer for Ontario, 2022





Legend

- Provincial Grid Cell**
 - Available
 - Pending
 - Unavailable
- Mining Claim**
 - Mining Claim
 - Boundary Claim
- Alienation**
 - Withdrawal
 - Notice
- NDM Administrative Boundaries**
 - NDM Townships and Areas
 - Geographic Lot Fabric
 - UTM Grid 1K
 - UTM Grid 10K
 - Mining Division
 - Mineral Exploration and Development Region
 - CLUPA Protected Area - Far North
 - Resident Geologist District
 - Federal Land Other
 - Native Reserves
- AMIS Sites**
 - AMIS Sites
 - AMIS Features
 - Drill Hole
 - Mineral Occurrences
- MLAS Mining History**
 - Withdrawal - History
 - Notice - History
 - Mining Claim - History
 - Mining Land Tenure - History
 - Legacy Claim
- Provincial Grid**
 - Provincial Grid 250K
 - Provincial Grid 50K
 - Provincial Grid Group
- Land Tenure**
 - Surface Rights
 - Mining Rights
 - Mining and Surface Rights
 - Order-in-Council

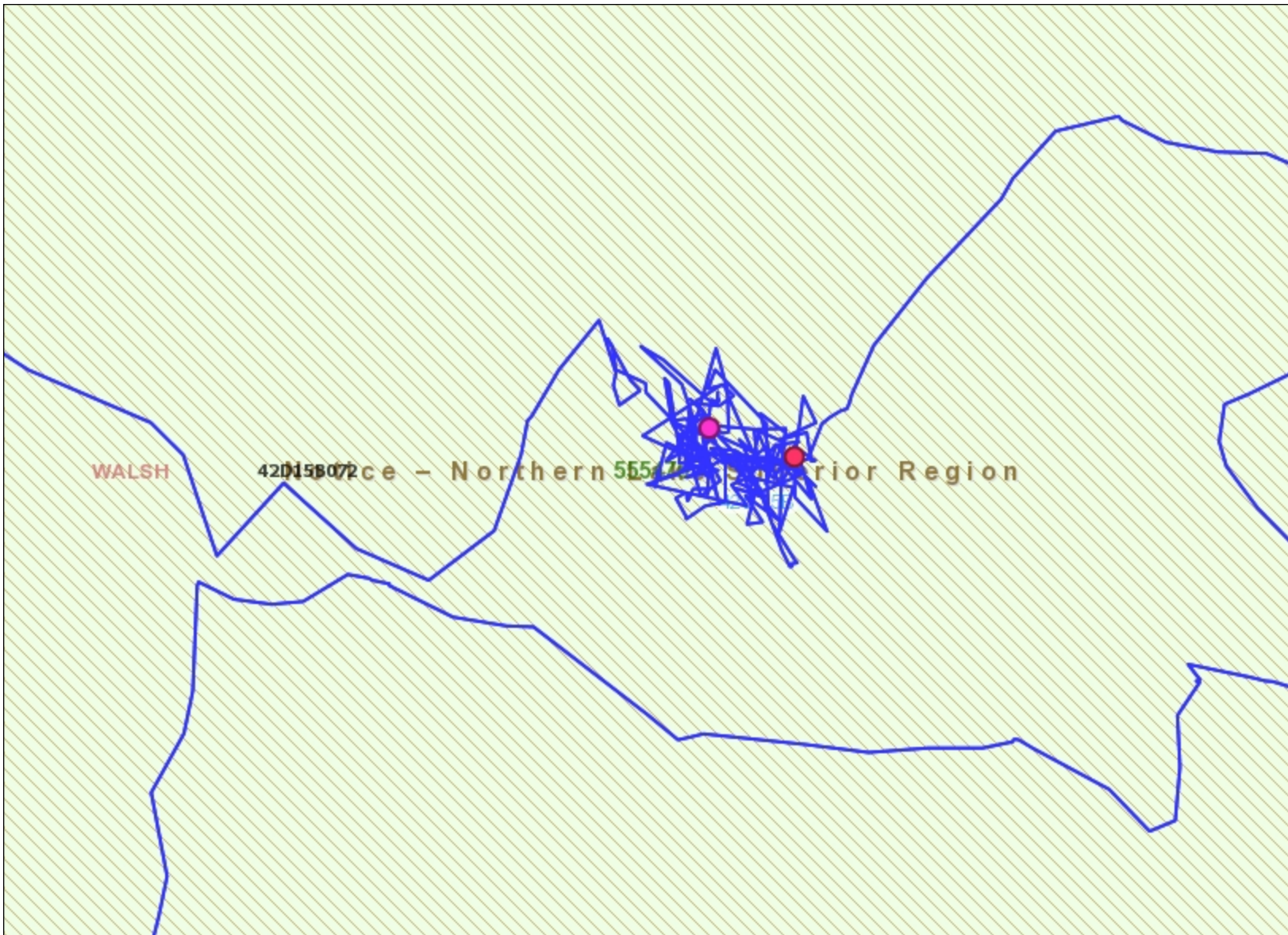
Those wishing to register mining claims should consult with the Provincial Mining Recorders' Office of the Northern Development and Mines (NDM) for additional information on the status of the lands shown hereon. This map is not intended for navigational, survey, or land title determination purposes as the information shown on this map is compiled from various sources. Completeness and accuracy are not guaranteed. Additional information may also be obtained through the local Land Titles or Registry Office, or the Natural Resources and Forestry. The information shown is derived from digital data available in the Provincial Mining Recorders' Office at the time of downloading from the Northern Development and Mines (NDM) web site.

0 2.42 km

Projection: Web Mercator

Imagery Copyright Notices: Ontario Ministry of Northern Development, Mines, Natural Resources and Forestry; NASA Landsat Program; First Base Solutions Inc.; Aéro-Photo (1961) Inc.; DigitalGlobe Inc.; U.S. Geological Survey.
© Queen's Printer for Ontario, 2022





Legend

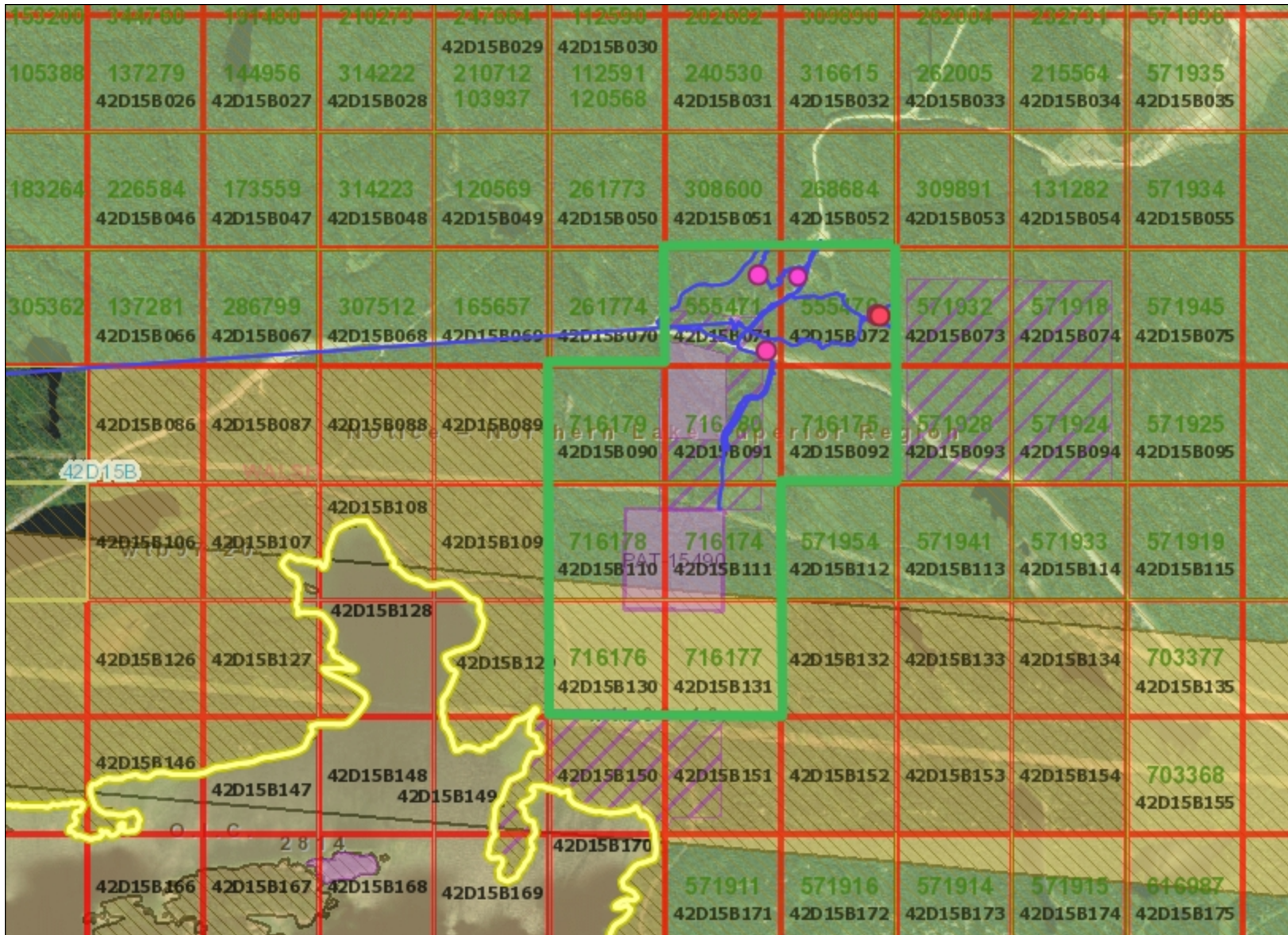
- Provincial Grid Cell**
 - Available
 - Pending
 - Unavailable
- Mining Claim**
 - Mining Claim
 - Boundary Claim
- Alienation**
 - Withdrawal
 - Notice
- NDM Administrative Boundaries**
 - NDM Townships and Areas
 - Geographic Lot Fabric
 - UTM Grid 1K
 - UTM Grid 10K
 - Mining Division
 - Mineral Exploration and Development Region
 - CLUPA Protected Area - Far North
 - Resident Geologist District
 - Federal Land Other
 - Native Reserves
- AMIS Sites**
 - AMIS Sites
 - AMIS Features
 - Drill Hole
 - Mineral Occurrences
- MLAS Mining History**
 - Withdrawal - History
 - Notice - History
 - Mining Claim - History
 - Mining Land Tenure - History
 - Legacy Claim
- Provincial Grid**
 - Provincial Grid 250K
 - Provincial Grid 50K
 - Provincial Grid Group
- Land Tenure**
 - Surface Rights
 - Mining Rights
 - Mining and Surface Rights
 - Order-in-Council

Those wishing to register mining claims should consult with the Provincial Mining Recorders' Office of the Northern Development and Mines (NDM) for additional information on the status of the lands shown hereon. This map is not intended for navigational, survey, or land title determination purposes as the information shown on this map is compiled from various sources. Completeness and accuracy are not guaranteed. Additional information may also be obtained through the local Land Titles or Registry Office, or the Natural Resources and Forestry. The information shown is derived from digital data available in the Provincial Mining Recorders' Office at the time of downloading from the Northern Development and Mines (NDM) web site.



Imagery Copyright Notices: Ontario Ministry of Northern Development, Mines, Natural Resources and Forestry; NASA Landsat Program; First Base Solutions Inc.; Aéro-Photo (1961) Inc.; DigitalGlobe Inc.; U.S. Geological Survey.
© Queen's Printer for Ontario, 2022





Legend

- Provincial Grid Cell**
 - Available
 - Pending
 - Unavailable
- Mining Claim**
 - Mining Claim
 - Boundary Claim
- Alienation**
 - Withdrawal
 - Notice
- NDM Administrative Boundaries**
 - NDM Townships and Areas
 - Geographic Lot Fabric
 - UTM Grid 1K
 - UTM Grid 10K
 - Mining Division
 - Mineral Exploration and Development Region
 - CLUPA Protected Area - Far North
 - Resident Geologist District
 - Federal Land Other
 - Native Reserves
- AMIS Sites**
 - AMIS Sites
 - AMIS Features
 - Drill Hole
 - Mineral Occurrences
- MLAS Mining History**
 - Withdrawal - History
 - Notice - History
 - Mining Claim - History
 - Mining Land Tenure - History
 - Legacy Claim
- Provincial Grid**
 - Provincial Grid 250K
 - Provincial Grid 50K
 - Provincial Grid Group
- Land Tenure**
 - Surface Rights
 - Mining Rights
 - Mining and Surface Rights
 - Order-in-Council

Those wishing to register mining claims should consult with the Provincial Mining Recorders' Office of the Northern Development and Mines (NDM) for additional information on the status of the lands shown hereon. This map is not intended for navigational, survey, or land title determination purposes as the information shown on this map is compiled from various sources. Completeness and accuracy are not guaranteed. Additional information may also be obtained through the local Land Titles or Registry Office, or the Natural Resources and Forestry. The information shown is derived from digital data available in the Provincial Mining Recorders' Office at the time of downloading from the Northern Development and Mines (NDM) web site.

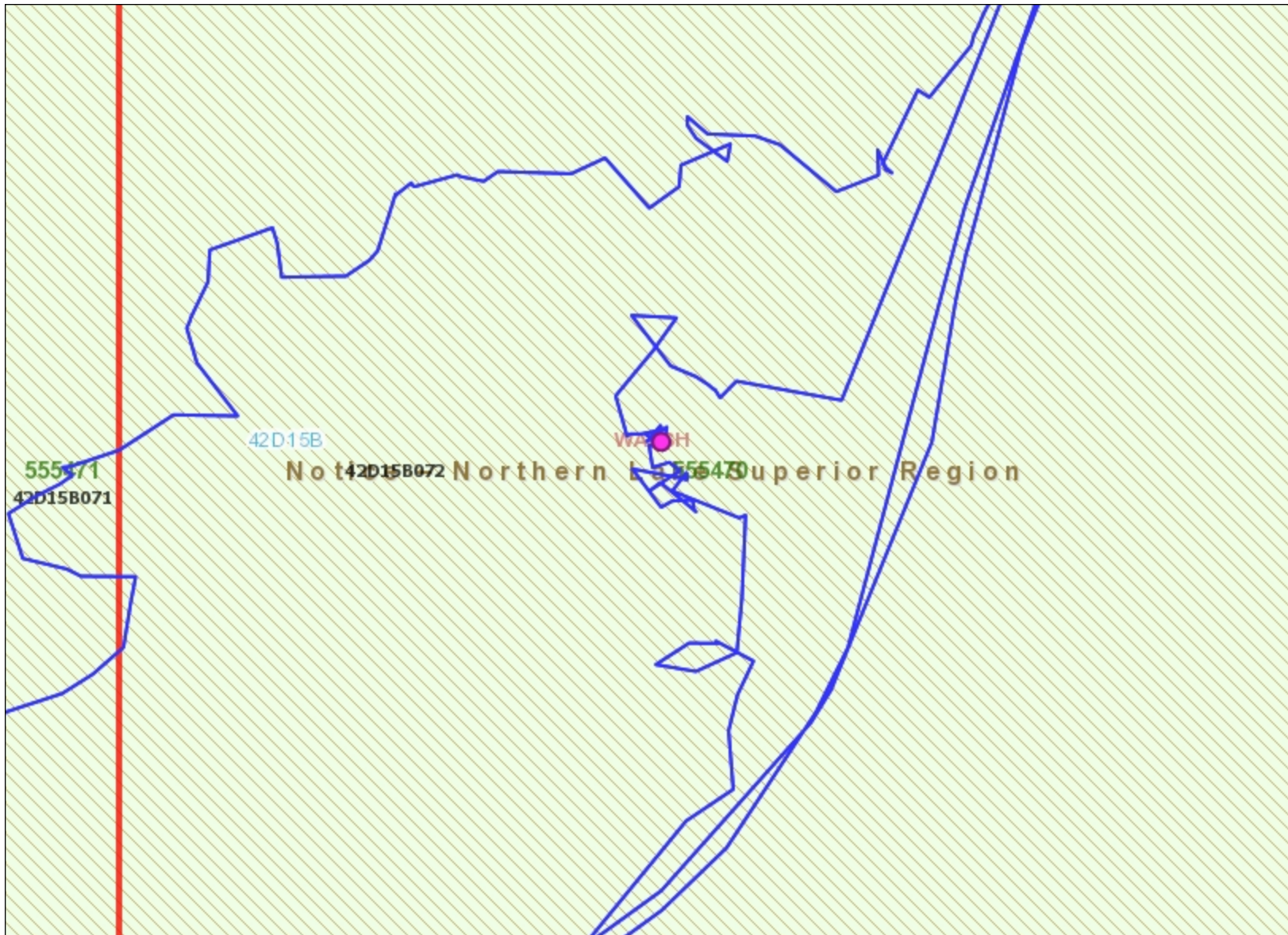


Projection: Web Mercator



Imagery Copyright Notices: Ontario Ministry of Northern Development, Mines, Natural Resources and Forestry; NASA Landsat Program; First Base Solutions Inc.; Aéro-Photo (1961) Inc.; DigitalGlobe Inc.; U.S. Geological Survey.
© Queen's Printer for Ontario, 2022





Legend

- Provincial Grid Cell**
 - Available
 - Pending
 - Unavailable
- Mining Claim**
 - Mining Claim
 - Boundary Claim
- Alienation**
 - Withdrawal
 - Notice
- NDM Administrative Boundaries**
 - NDM Townships and Areas
 - Geographic Lot Fabric
 - UTM Grid 1K
 - UTM Grid 10K
 - Mining Division
 - Mineral Exploration and Development Region
 - CLUPA Protected Area - Far North
 - Resident Geologist District
 - Federal Land Other
 - Native Reserves
- AMIS**
 - AMIS Sites
 - AMIS Features
 - Drill Hole
 - Mineral Occurrences
- MLAS Mining History**
 - Withdrawal - History
 - Notice - History
 - Mining Claim - History
 - Mining Land Tenure - History
 - Legacy Claim
- Provincial Grid**
 - Provincial Grid 250K
 - Provincial Grid 50K
 - Provincial Grid Group
- Land Tenure**
 - Surface Rights
 - Mining Rights
 - Mining and Surface Rights
 - Order-in-Council

Those wishing to register mining claims should consult with the Provincial Mining Recorders' Office of the Northern Development and Mines (NDM) for additional information on the status of the lands shown hereon. This map is not intended for navigational, survey, or land title determination purposes as the information shown on this map is compiled from various sources. Completeness and accuracy are not guaranteed. Additional information may also be obtained through the local Land Titles or Registry Office, or the Natural Resources and Forestry. The information shown is derived from digital data available in the Provincial Mining Recorders' Office at the time of downloading from the Northern Development and Mines (NDM) web site.

0 0.04 km

Projection: Web Mercator



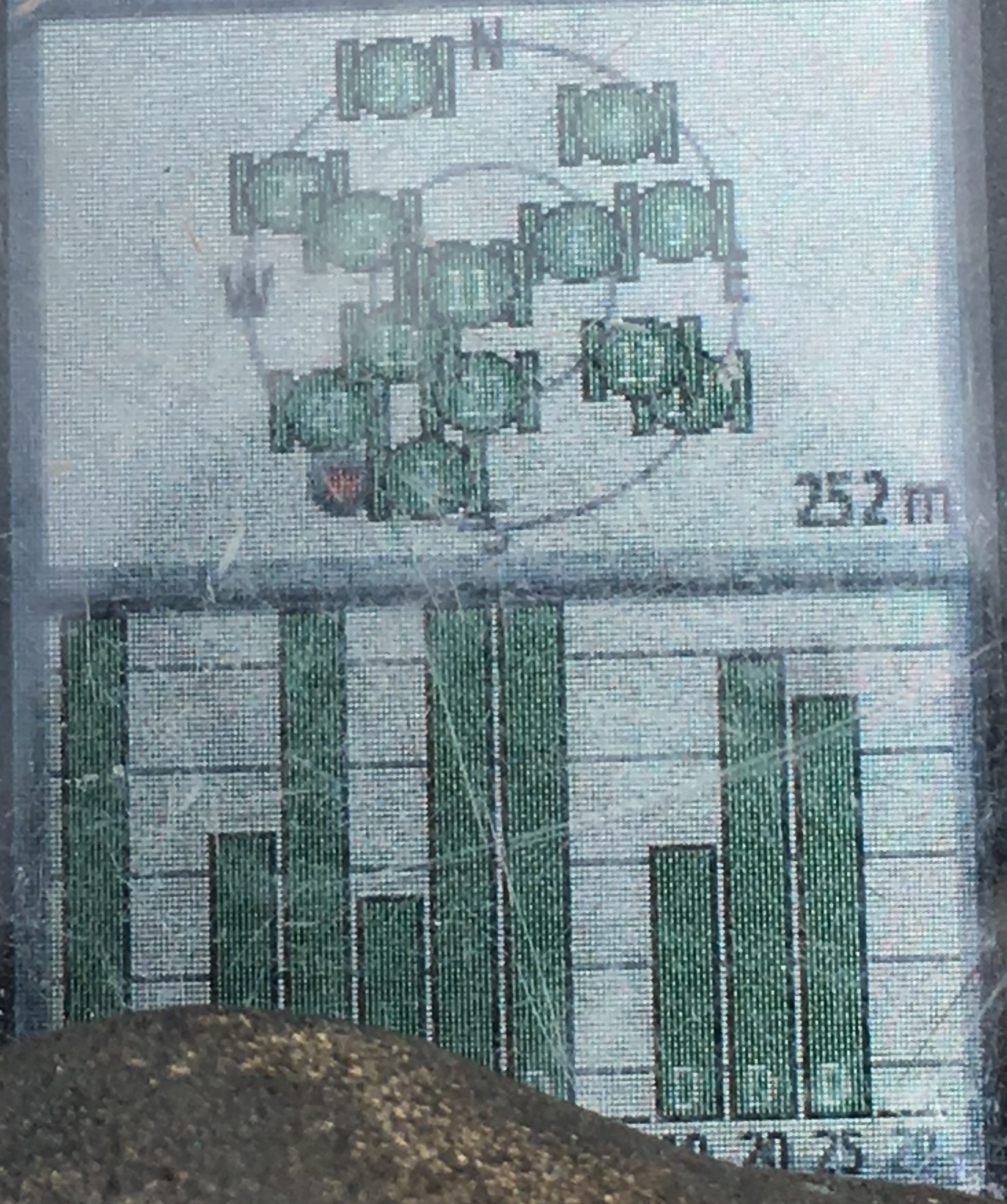
Imagery Copyright Notices: Ontario Ministry of Northern Development, Mines, Natural Resources and Forestry; NASA Landsat Program; First Base Solutions Inc.; Aéro-Photo (1961) Inc.; DigitalGlobe Inc.; U.S. Geological Survey.
© Queen's Printer for Ontario, 2022





GPSMAP 64s

16 U 0523306 GPS
UTM 5407484 3m



MARK

MENU

QUIT

ENTER



12/07/22
DHC 01





GPSMAP 64s

16 U 8523792
UTM 5407327

GARMIN

IN

OUT

FRG

PAGE

12/07/22

DHX 001

Pt 1





12/07/22

DHMO2

Pit 2





12/07/22

DHN02

pit 2





12/03/03

DHX03

Alt #31



12/07/22

DHX 03

12/07/22







12/07/22
Metrol