



42E12NE0142 2 16391 WALTERS

010

REPORT ON PROSPECTING

ON THE

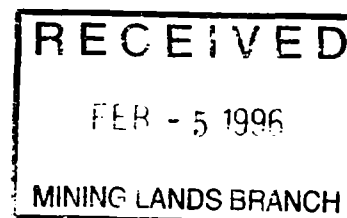
HIGHWAY 801 PROPERTY

Walter's Twp. Ontario

Lat. 49° 41'

Long. 87° 42'

2.163 91



By: P. Lassila

Date: Oct. 1995



42E12NE0142 2 16391 WALTERS

010C

## CONTENTS

	Page
INTRODUCTION	1
LOCATION AND ACCESS	1
PROPERTY	1
PREVIOUS WORK	2
WORK PROGRAM	3
GEOLOGY AND MINERALIZATION	3
General Setting	3
Property Geology	4
Three Main Zones of Interest	5
RECOMMENDATIONS	8
REFERENCES	9
AUTHOR'S CERTIFICATION	10
Figures	
Figure 1: Location Map	
Figure 2: Claim Map	
Figure 3: General Geology	
Figure 4: General Compilation	
MAPS	
Map 1: Prospecting Map	
SUPPORTING DOCUMENTS (at end of Report)	
a) List of assay sample data	
b) Assay result certificates	
c) Assay invoices	
d) Property ownership documents	
e) Lassila daily work log and work summary	
f) Addresses of Workers	
g) Costs Lists	

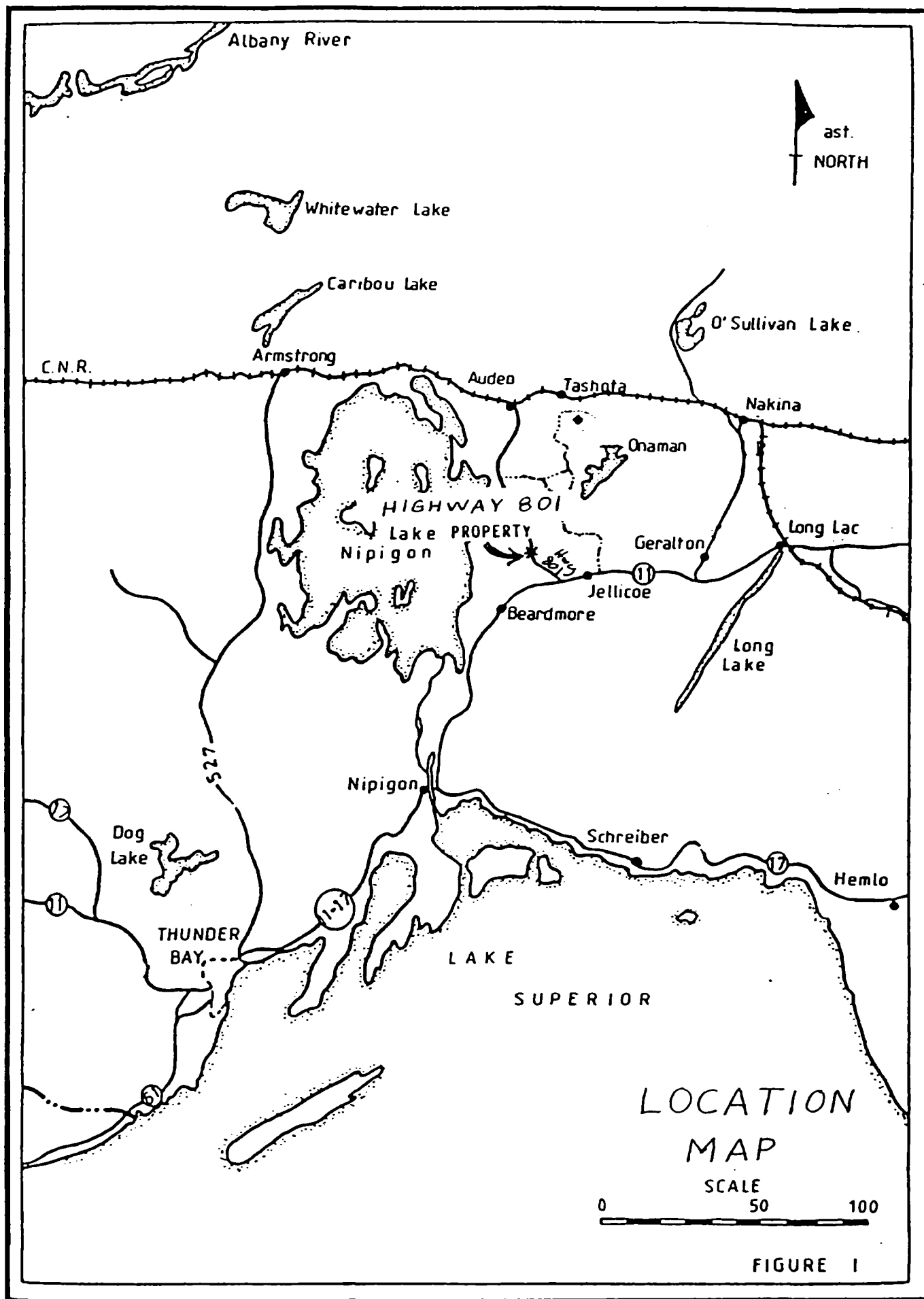
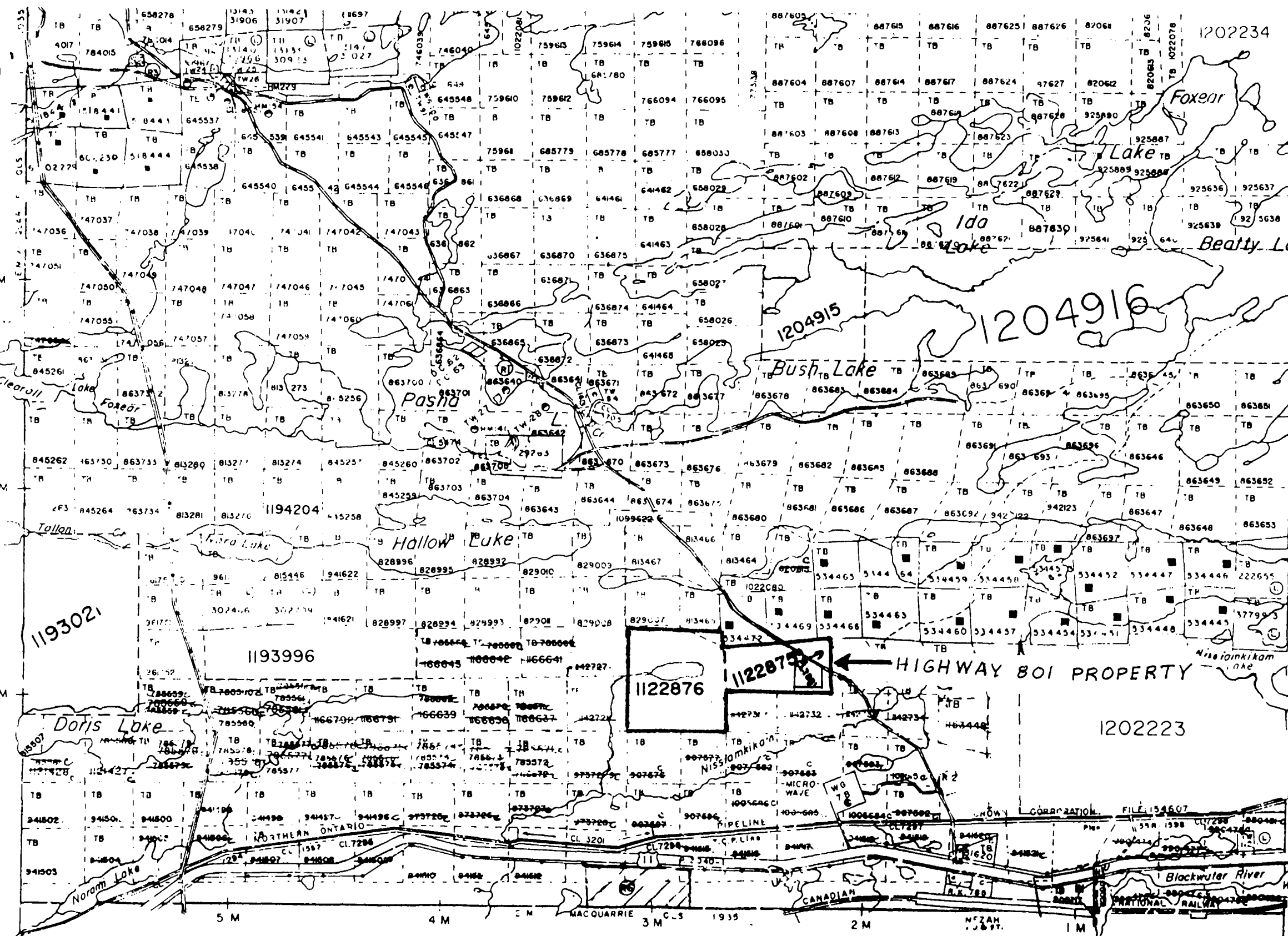
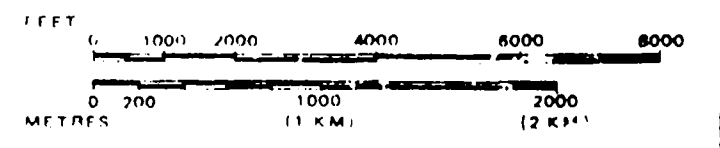



FIGURE 1



SCALE: 1 INCH = 40 CHAINS



TOWNSHIP OF  
**WALTERS**  
 M.N.R. ADMINISTRATIVE DISTRICT  
**NIPIGON**  
 MINING DIVISION  
**THUNDER BAY**  
 LAND TITLES / REGISTRY DIVISION  
**THUNDER BAY**

 Ministry of Land Management  
 Natural Resources Branch  
 Ontario

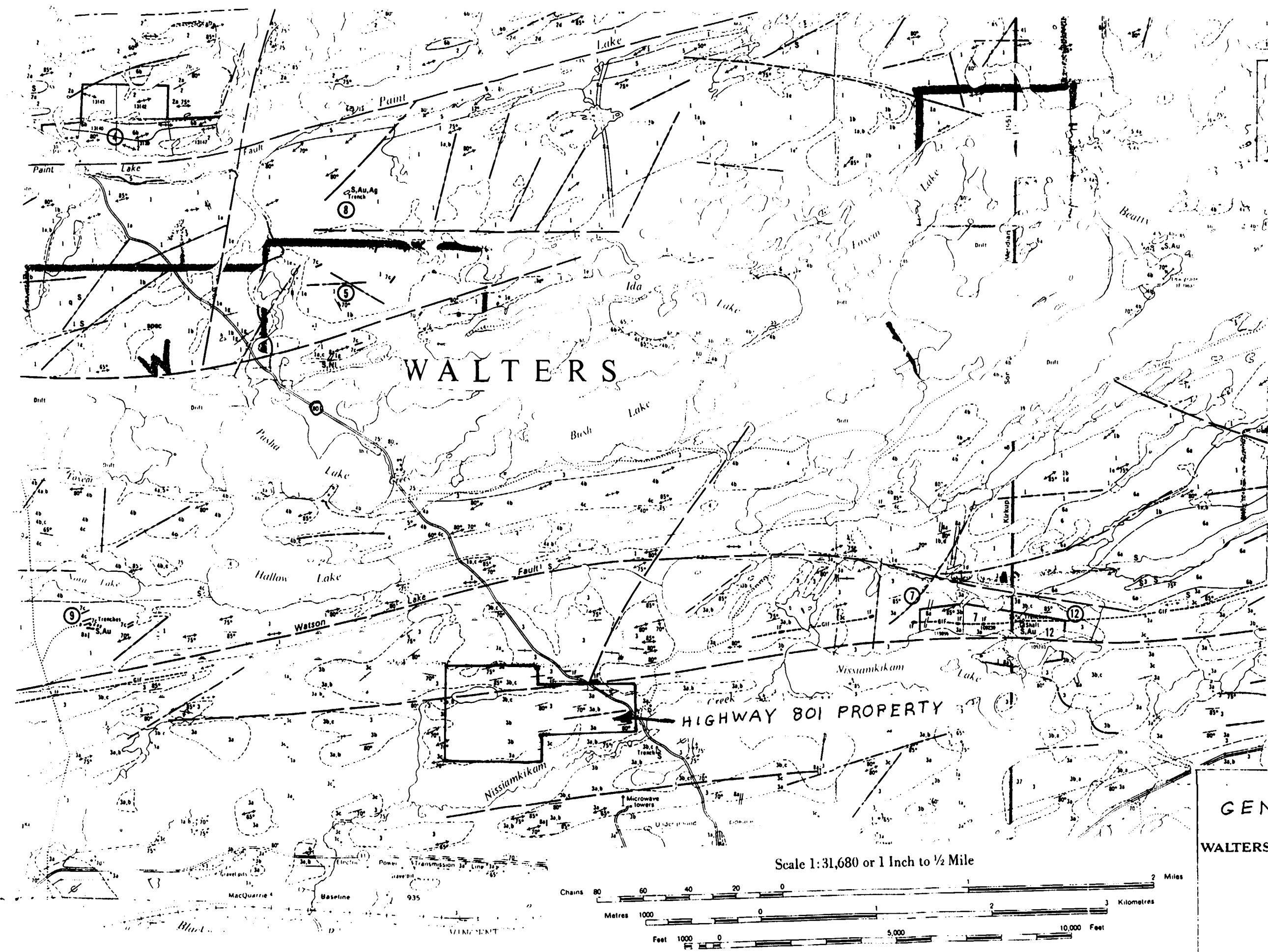
February, 1981

**G-171**

CLAIM MAP

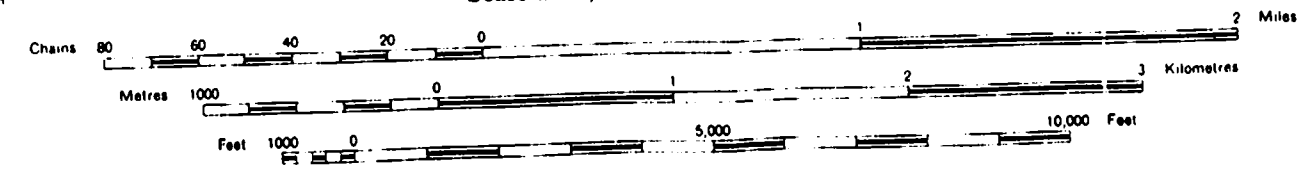
Figure 2

Vincent Twp. (G-163)



- PRECAMBRIAN<sup>b</sup>**  
**MIDDLE TO LATE PRECAMBRIAN (PROTEROZOIC)**
- MAFIC INTRUSIVE ROCKS**
- 8a Diabase.  
 8b Feldspar-quartz porphyry related diabase.
- INTRUSIVE CONTACT**
- EARLY PRECAMBRIAN (ARCHEAN)**  
**FELSIC INTRUSIVE ROCKS**
- 7 Unsubdivided.  
 7a Trondhjemite.  
 7b Hybrid felsic intrusive rocks.  
 7c Feldspar and quartz-feldspar porphyry, granitic dikes.
- MAFIC INTRUSIVE ROCKS**
- 6 Unsubdivided.  
 6a Diorite, quartz diorite.<sup>c</sup>  
 6b Gabbro.<sup>c</sup>  
 6c Lamprophyre.
- INTRUSIVE CONTACT**
- METAVOLCANICS AND METASEDIMENTS**
- METASEDIMENTS**
- 5 Polymictic conglomerate, minor feldspathic sandstone and derived schists.  
 4 Unsubdivided.  
 4a Pebbly sandstone.  
 4b Feldspathic sandstone, quartzose sandstone.  
 4c Siltstone, minor argillite.  
 3 Unsubdivided.  
 3a Greywacke.  
 3b Siltstone, fine-grained sandstone.  
 3c Argillite, slate.  
 IF Iron Formation.
- INTERMEDIATE TO FELSIC METAVOLCANICS**
- 2 Unsubdivided.  
 2a Tuff-breccia, pyroclastic breccia and derived schist.  
 2b Lava and tuff associated with 2a.  
 2c Quartz-feldspar porphyry.  
 2d Feldspar porphyry.  
 2e Amygdaloidal lava.
- MAFIC METAVOLCANICS**
- 1 Unsubdivided.  
 1a Amygdaloidal lava.  
 1b Pillow lava.  
 1c Volcanic breccia and agglomerate.  
 1d Tuff and tuffaceous schist.  
 1e Coarse-grained lava.<sup>a</sup>  
 1g Chert, jasper, minor iron formation.
- Ag Silver.  
 Au Gold.  
 Cu Copper.  
 Ni Nickel.  
 q Quartz.  
 S Sulphide mineralization.  
 spec Specularite.

Scale 1:31,680 or 1 Inch to 1/2 Mile



**GENERAL GEOLOGY**  
 Map 2156  
**WALTERS AND LEDUC TOWNSHIPS**  
 THUNDER BAY DISTRICT

Figure 3

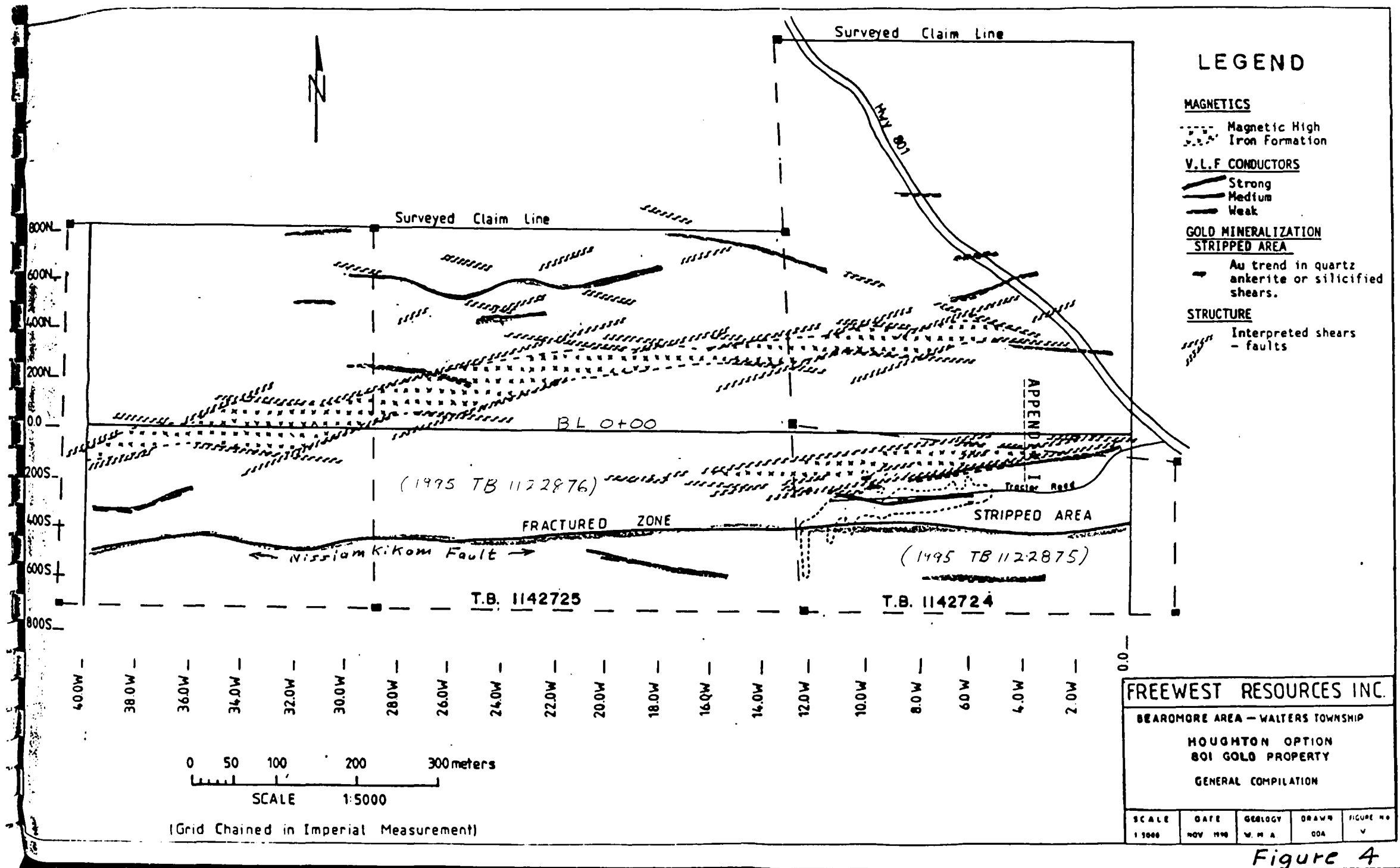


Figure 4

## INTRODUCTION

Utilizing an OPAP supported budget of \$4500., prospecting and bulldozer stripping was planned in 1995 on the Houghton-Lassila "Highway 801 Property" in Walters Twp. Ontario. During a period between August and October 1995 the property (six claim units) was thoroughly prospected with special emphasis given to the area along the two east-west trending centrally located iron formations. During the prospecting 20 grab samples were obtained for assay. Eighteen sites were also flagged for bulldozer stripping, power washing and followup sampling but this work, which was estimated to cost an additional \$4000., was deferred until 1996 due to lack of available funding at this time.

This report describes the prospecting program and results.

## LOCATION AND ACCESS

The property is easily reached by the graveled Highway 801 which runs through the property about 2.5 km north of Highway 11, from a point about 30 km east of Beardmore, Ontario (Figs. 1 and 2).

It is located at Latitude 49\*41' and Longitude 87\*42' in Walters Twp., Ontario.

## PROPERTY

The property consists of two contiguous claims 1122875 (2 units) and 1122876 (4 units) in Walters Twp.. Ontario, Claim Map G-171, District of Thunder Bay (Fig. 2). It is 50% owned by Frank Houghton and 50% by P. Lassila (See "Abstracts under "Supporting Data").

## PREVIOUS WORK

Remnants of old trenches (dating back to the 1930's) are still visible on the property. The results of this old trenching are not well documented.

In 1984 M.F. Cowan completed a ground magnetic survey, along with prospecting, over the present property.

In 1987 Blue Falcon Mines Ltd. carried out magnetic and VLF EM surveys and mapping over the property area. Follow up work in areas of shearing, alteration, iron formation and the old trench locations was recommended but never completed.

In 1990 Frank Houghton, supported by OPAP funding, prospected part of the area and located gold enriched sheared carbonatized iron formation with replacement sulfides. This property was optioned by Freewest Resources Inc. in the fall of 1990.

During 1990 Freewest conducted backhoe stripping, power washing and extensive rocksaw cut channel sampling over an area about 120 m long by 20 m. to 50 m wide (Map 1) which is underlain by strongly sheared ankerite carbonatized, partially hematitic, wacke-argillite oxide-facies altered iron formation, containing pyrite and arsenopyrite sulfide replacement. Anomalous gold values up to 9525 ppb Au. were obtained from channel samples from both carbonatized ductile wacke shears and brittle-ductile quartz and quartz-carbonate veined shears.

The Freewest 1990 exploration work was almost entirely restricted to the large excavation which exposes the gold-bearing alteration zone (Map 1).

In the winter of 1992 Freewest conducted a detailed VLF EM and magnetometer surveys over the property. The magnetic results outline two distinct parallel west-southwest trending magnetic iron formations underlying the present property area. No followup work was conducted.

The O.D.M. regional mapping results of Walters and Leduc Townships by W.O. Mackasey (1976 Geoscience Report 149) provides an overview of the geological and structural setting of the area containing the property.

## WORK PROGRAM

The P. Lassila 1995 work consisted entirely of prospecting and assay sampling. F. Houghton also prospected with P. Lassila on August 22, 23, 25 and Aug. 30, 1995. On Aug. 26 and Aug. 27, 1995, Philip Houghton and Frank Houghton brought in hoses and pump and powerwashed two locations in the old Freewest strip trench to better expose two previously unsampled mineralized locations for assay sampling.

The prospecting was concentrated most heavily on the east and west extensions off the large stripped zone (Freewest 1990) and along the north east-west trending magnetic iron formation (Fig. 4 and Map 1). Considerable handstripping, using an axe to cut the rooty moss covered outcrops was done in these areas, as well as over the quartz vein system south of the east-west trending lake and swamp (Map 1).

A total of 20 grab samples were selected for assay from the property area. Sampling from the locations east and west of the large stripped alteration zone and along the north iron formation was very limited because a more comprehensive sampling was planned to follow the bulldozer stripping work. Eighteen locations in outcrop and shallow overburden areas were flagged and designated for bulldozer stripping. However, this work has been deferred to 1996, pending available funding.

The 1991 Freewest picket line grid (coordinates in feet) was used for location control over the northwest part of the property (Map 1).

## GEOLOGY AND MINERALIZATION

### General Setting

The property lies within a sequence of clastic Archean metasediments with iron formation in the Name-waminikan Group, situated in the south part of the Beardmore-Geraldton volcanic-sedimentary belt.

Three subparallel major east-west trending structures (Paint Lake Fault, Watson Lake Fault and Blackwater Fault) cut through Namewaminikan Group of rocks. The Nissiamkikam Fault, a southlying subsidiary splay fault from the Watson Lake Fault, cuts east-west through the Highway 801 Property, immediately south of two parallel east-west trending iron formations (Figs. 3 and 4). Gold-bearing mineralization is associated with these structures.

The Nissiamkikam Fault extends through the Highway 801 Property eastward past the Solomon Pillars past-producing gold mine (about 4 km east of the property.) Both properties contain gold mineralization in a similar environment comprising shearing and pyrite and arsenopyrite replacement lenses in altered iron formation (Fig. 3).

#### Property Geology

The property contains three zones of apparent gold potential interest:

- 1) A 50 m. wide carbonatized ferruginous, pyritic-arsenopyritic, ductile sheared gold-bearing alteration zone, partially exposed by Freewest trenching in 1990,
- 2) A magnetite banded iron formation flanking the southlying alteration zone,
- 3) A north magnetite banded (partially hematized) deformed iron formation and adjacent sheared rocks, about 70 m. north of and parallel to the south iron formation.

The remainder of the property is underlain by a repetitious metasedimentary sequence of banded fine grained wacke sandstone, siltstone and lesser argillite. The argillites are nearly everywhere intensely foliated, whereas the coarser grain metasediments contain massive, foliated and, locally, schistose fabrics. No significant mineralization, other than a few quartz veins and minor disseminated pyrite was found prospecting these rocks (Map 1).

The most significant quartz veining, outside of the three main zones of interest, is a 1 m. to 3 m. wide system of quartz veining along the siltstone shear which apparently extends east-west for at least 700m. It is exposed in several outcrops just south of the lake and the swamp covered east-west fault. Best assay, from several samples of the quartz veining, is 226 ppb Au from a white quartz vein in an old blast pit at 16+50W, 6+10S (old picket line coordinates in feet).

### Three Main Zones of Interest

#### 1) Main Deformation-Alteration Zone:

The large 1990 Freewest strip trench exposure was examined in detail and powerwashing was completed at two locations to provide some additional exposure. An assay grab sample from each of these washed locations returned values as follows:

- a) sample 25836; quartz vein, 2% to 3% pyrite and arsenopyrite, 3415 ppb. Au, 910 ppm. As.
- b) sample 25835: quartz ankerite carbonate veinlets in a sericitic shear with stringlets of pyrite parallel to foliation, 415 ppb. Au. (See Map 1 for locations).

For geology, mineralization, structure and previous assay sample results of this large stripped area the reader is referred to the Freewest Resources Inc. report (W.M. Atkins, 1993) where these aspects are discussed in detail.

Prospecting west and east on strike of the stripped area, revealed similar altered sheared rocks, as well as banded magnetic iron formation to the east.

About 700 m. west of the stripped zone, an old (1930's) mainly filled-in north-south trench was located in shallow overburden and outcrop. No signs of recent exploration were observed over this location. Altered schistose metasediments were noted in moss covered

outcrop but no samples were taken as this location was designated for later bulldozer stripping.

East of the stripped zone, another old trench with hematite iron formation in pyritic sericite-chlorite schist was sampled, with the best value of 490 ppb Au. obtained from the pyritic schist. Magnetite banding was observed in outcrop north of the trench. Additional hand stripping was completed in the area of rusty pyrite and arsenopyrite mineralized silicified shear on the old road. Earlier saw-cut channel sampling was done here by Frank Houghton who reported (verbal communication) up to 0.007 oz/t Au from a arsenopyrite mineralized section. Two quartz veins sampled in this area returned nil to very low gold values. A substantial portion of this area is designated for bulldozer stripping and power washing to obtain a better exposure of the alteration system for assay sampling.

2) The Iron Formation on the North Flank of the Alteration Zone:

This iron formation is exposed only near Highway 801. Here it consists of finely banded ( $\frac{1}{2}$  cm. to 2 cm. bands) magnetite, interlayered with banded metasiltstone. It appears to be a marker horizon of the north boundary of the alteration zone.

3) The Northlying Magnetic Iron Formation;

This is a broader and more strongly magnetic iron formation than the one to the south. It exhibits considerable structural deformation in the form of tight folds, pinchouts and dislocations at several outcrop exposures which were handstripped over areas up to 5m x 10m. (An axe was used to cut the rooty moss cover which was then rolled back like a rug to provide sizable fresh exposure). At some locations the magnetite appears to have been altered to orangy coloured jasper-like hematite which is finely pyritic. Considerable quartz veining is associated with the iron formation. The quartz veining also has undergone substantial folding, dislocation and pinchouts. The siltstone host rock is often schistose folded and

crenulate contorted in the locations of the folded magnetite bands.

Near the iron formation, schistosity, sericitization chloritization, ankerite carbonate and quartz-carbonate seaming and associated pyritization are exhibited in several outcrops. Between lines 14W and 16W north of Baseline 0+00 is an intensely sheared zone some 10m to 15m wide, which appears to strike at an acute angle to the general trend of the iron formation.

It is apparent that a complexly deformed iron formation underlies this area. Several bulldozer stripping locations have been outlined along this system to provide sufficient good exposures to properly evaluate the zone for gold enrichment. This zone apparently has not been previously investigated.

All three areas contain geological, structural, alteration and mineralization assemblages which should be conducive to gold enrichment. Bulldozer stripping is required, along these zones, to provide sufficient bedrock exposures for a more comprehensive visual examination and expose mineralized locations for assay sampling.

### RECOMMENDATIONS

The locations flagged in 1995 for bulldozer stripping should be stripped, and the thus exposed quartz, hematite and sulfide mineralized locations should be sampled for assay. Any locations found to contain gold enrichment should be further stripped along strike where this is feasible, followed by power washing and additional detailed sampling. Finally, all gold-bearing stripped areas should be mapped in detail.

Cost estimate for this work ranges from \$5000. to \$10,000, depending on the amount of further work warranted following the results from the first stripping stage.

*P. Lassila*

P. Lassila  
Consulting Geologist

REFERENCES

Atkins, W.M.

1993: Exploration Report, Stripping Programme 1990 and Interpretation 1992 Geophysic Survey Results, 12 p. Includes 3 maps, scales 1:500, 1:500 and 1:1500. Assessment Files, District of Thunder Bay Geologist Office, Thunder Bay, Ont.

Mackasey, W.O.

1976: Geology of Walters and Leduc Townships, District of Thunder Bay; Ontario Div. Mines, GR149, 60 p. Accompanied by Map 2373, scale 1:31,680 (1 inch to  $\frac{1}{2}$  mile).

AUTHOR'S CERTIFICATION

I, Pentti Lassila, do hereby certify as follows:

- 1) That I am an independent consulting geologist, and that I reside at 68 Albery Crescent, Ajax, Ontario.
- 2) That I am a graduate of the University of North Dakota, U.S.A., 1968, with the degree of Honours B.Sc. in Geology.
- 3) That I have been practising my profession in minerals exploration since 1968.
- 4) That I have completed the exploration work described in the report, completed the enclosed maps, am author of this report and am responsible for its contents.

P. Lassila



Nov. 06, 1995

LIST OF ASSAY SAMPLE DATA

(P. Lassila OPAP 95-034)

1995 ASSAY SAMPLES (Grab samples)

Hwy 801 Property, Walters Twp. Ont

Sample No.	Location (in ft.)	Description	Results
25828	2+60W 3+20S (N. edge of #)	30 cm white to slightly smoky qtz, vein. Trace very fn py	Nil Au
25829	2+60W 3+20S	as above but contains 10% ankerite carb,	Nil Au
25830	old pit 1+26W 1+80S	carbonatized qtz veinlets in ser-ser-chlor shear with up to 20% fn py, aspy?	490 ppb Au
25831	old pit 1+30W 1+80S	qtz-carb veinlets in 15cm hem. band 2-5% py aspy?	14 ppb Au <5 ppm AS
25832	old pit 1+33W 1+80S	as above but less sulfides	14 ppb Au <5 ppm AS
25833	4+20W 4+75S	multiple qvs across 1 to 2m, trace py minor ankerite carb.	24 ppb Au 25 ppb AS
25834	4+25W 4+75S	same as 25833	10 ppb Au 21 ppm AS
25835	7+90W 1+10S (strip trench, power washed)	qtz carb veinlets in ser shear, stringlets of py, as py? 2-5%	415 ppb Au <5 ppm AS
25836	10+80W 3+00S (strip Tr, power washed)	qv with 2-3% py, aspy,	3415 ppb Au 910 ppm AS
25837	14+00W 6+10S	1 1/2 m wide white qv system in shear trace py	Nil Au
25838	old pit 16+50W 6+10S	25 cm qv, trace py	226 ppb Au
25839	16+75W 6+35S	20 cm qv, trace py	3 Au

12 grab samples

Swastika Gert. No SW-3545-RG1

(P. Lassila OPAP 95-034)

1995 ASSAY SAMPLE Grab samples  
Hwy 801 Property, Walters Twp, Ont.

Sample No.	Location (ft.)	Description	Results
25840	24+60W 6+00S	50 cm qtz. v. Trace py	3 ppb Au
25841	25+00W 6+00S	50 cm qv	Nil Au
25842	25+30W 6+00S	30 cm qv	10 ppb Au
25843	27+00W 6+00S (S. shore of lake)	20 cm qv Trace py	Nil Au
25844	17+50W 3+00N	magnetite with hem. alteration, 1-3% py, aspy?	Nil Au <5 ppm AS
25845	17+50W 3+00N	magnetite with hem. alteration, 1-3% py, aspy?	Nil Au <5 ppm AS
25846	31+00W 1+20N	magnetite with hem. alt. 1-3% fine py, aspy?	21 ppb Au
25847	35+00W 0+60N	Qtz veining with minor py along edges	Nil Au

8 Grab samples, Swastika Cert. No. 5W-3546-R61

ASSAY RESULT CERTIFICATES



Established 1928

# Swastika Laboratories

A Division of TSL/Assayers Inc.

Assaying - Consulting - Representation

## Geochemical Analysis Certificate

5W-3545-RG1

Company: P. LASSILA

Date: SEP-14-95

Project:

Att: P. Lassila

We hereby certify the following Geochemical Analysis of 12 Rock samples submitted SEP-11-95 by .

Sample Number	Au PPB	Au Check PPB	As PPM
25828	Nil	-	-
25829	Nil	-	-
25830	490	411	-
25831	14	-	<S
25832	3	-	<S
25833	24	-	25
25834	10	-	21
25835	415	490	<S
25836	3415	2949	910
25837	Nil	-	-
25838	226	-	-
25839	3	-	-

Certified by Denis Chantre

P.O. Box 10, Swastika, Ontario P0K 1T0  
Telephone (705) 642-3244 FAX (705) 642-3300



Established 1928

# Swastika Laboratories

A Division of TSL/Assayers Inc.

Assaying - Consulting - Representation

## Geochemical Analysis Certificate

5W-3546-RG1

Company: **P. LASSILA**

Date: SEP-13-95

Project:

Attn: **P. Lassila**

We hereby certify the following Geochemical Analysis of 8 Rock samples submitted SEP-11-95 by .

Sample Number	Au PPB	Au Check PPB	As PPM
25840	3	-	-
25841	Nil	-	-
25842	10	-	-
25843	Nil	-	-
25844	Nil	-	6
25845	Nil	-	6
25846	21	27	-
25847	Nil	-	-

Certified by Denis Chantre

P.O. Box 10, Swastika, Ontario P0K 1T0  
Telephone (705) 642-3244 FAX (705) 642-3300

ASSAY INVOICES

801 Sampler

PAID  
PAID  
PAID

Paid Oct 03/95  
#142

INVOICE

NO

DATE

PAGE

SOLD TO:

SHIP TO:

PAID  
PAID  
PAID

GST Number: R132862640

ITEM NO	QUANTITY	UNIT	DESCRIPTION	UNIT PRICE	AMOUNT	
12	Code 1	Au		8.000	96.00	
6	Code 1	As		3.500	21.00	
12	Code 4	Sample Prep		3.500	42.00	
		Cert #5W-3545-RG1				
		Transportation Charges			13.70	
		3-GST @ 7 %			12.09	
<b>COMMENTS:</b>					<b>TOTAL</b>	<b>161.79</b>
Net 30 Days						

801 Sampler

Swastika Laboratories  
P.O. Box 10  
Swastika, Ontario  
POK 1T0

Paid Oct 03/95  
#142

INVOICE

NO 34284

DATE 09-15-95

PAGE 1 of 1

SOLD TO:

SHIP TO:

P. Lassila  
68 Albery Crescent  
Ajax,, Ontario  
L1S 2Y3

Same

GST Number: R132862640

ITEM NO	QUANTITY	UNIT	DESCRIPTION	UNIT PRICE	AMOUNT	
8	Code 1	Au		8.000	64.00	
2	Code 1	As		3.500	7.00	
8	Code 4	Sample Prep		3.500	28.00	
		Cert #5W-3546-RG1				
		Transportation Charges			10.30	
		Cert #5W-3546-RG1				
		3-GST @ 7 %			7.65	
<b>COMMENTS:</b>					<b>TOTAL</b>	<b>116.95</b>
Net 30 Days						

PROPERTY OWNERSHIP DOCUMENTS

Claim No: TB 1122875  
Status: Active

-----  
Due Date: 1997-OCT-23 | Recorded: 1995-OCT-23  
Work Required: 800 | Staked: 1995-OCT-08 14:15  
-----

Total Work: 0 | Description of Claim:  
Total Reserve: 0 | WALTERS (G-0171)  
Present Work Assignment: 0 |  
Claim Bank: 0 | Claim Units: 2  
Multiple Township: N  
-----

Claim Ownership

Percentage	Client#	Recorded Holder(s)
50.00	146058	HOUGHTON FRANKLIN ALFRED
50.00	157595	LASSILA PENTTI

-----

Type	Date	Dollars	Description
STAKER	1995-OCT-23		RECORDED BY LASSILA PENTTI (A42271) R9540.00618
STAKER	1995-OCT-23		LASSILA PENTTI (157595) RECORDS 50.00 R9540.00619 % IN THE NAME OF HOUGHTON FRANKLIN ALFRED (146058)

-----

Reservation :

01	400' surface rights reservation around all lakes and rivers
02	Sand and gravel reserved
03	Peat reserved
04	Other reservations under the Mining Act may apply
06	Excluding road

\*\*\* End of Abstract \*\*\*

Status of claim is based on information currently on record.

Claim No: TB 1122876  
Status: Active

-----  
Due Date: 1997-AUG-28  
Work Required: 1600

Recorded: 1995-AUG-28  
Staked: 1995-AUG-22 16:30  
-----

Total Work: 0  
Total Reserve: 0  
Present Work Assignment: 0  
Claim Bank: 0

Description of Claim:  
WALTERS (G-0171)  
Claim Units: 4  
Multiple Township: N  
-----

Claim Ownership

Percentage	Client#	Recorded Holder(s)
50.00	157595	LASSILA PENTTI
50.00	146058	HOUGHTON FRANKLIN ALFRED

-----

Type	Date	Dollars	Description
STAKER	1995-AUG-28		RECORDED BY HOUGHTON PHILIP FRANKLYN (E32853) R9540.00520
STAKER	1995-AUG-28		HOUGHTON PHILIP FRANKLYN (146061) RECORDS 50.00 % IN THE NAME OF HOUGHTON FRANKLIN ALFRED (146058) R9540.00521
STAKER	1995-AUG-28		HOUGHTON PHILIP FRANKLYN (146061) RECORDS 50.00 % IN THE NAME OF LASSILA PENTTI (157595) R9540.00522

-----

Reservation :

01 400' surface rights reservation around all lakes and rivers  
02 Sand and gravel reserved  
03 Peat reserved  
04 Other reservations under the Mining Act may apply  
05 Including land under water

\*\*\* End of Abstract \*\*\*

Status of claim is based on information currently on record.

LASSILA DAILY WORK LOG AND WORK SUMMARY

Hwy 801 Prospect, 1995 Lassila Work Log  
F. Houghton and Lassila

- Aug 25 Prospect area south of swamp (0100 to 6100W) found splayed qtz veining at two locations, took two samples, rest is mainly banded to semi-massive siltstone
- Aug 26 Prospect east and south <sup>of</sup> Microwave Tower area - old pits over qv at tower site (restricted land) no samples, considerable outcrop - mainly siltstones.
- Aug 27 Prospect west along south side of swamp to 17100 West, located old pit and two qvs at 16100 to 1675W took two samples, also located 9ft wide qv structure at 19100W and handstripped for 20ft. using axe to cut roots, took one sample
- Aug 26, 27 Philip and Frank Houghton powerwashed two locations in old Freewest strip trench to obtain assay samples from previously unsampled locations (includes time for move and demobe)
- Aug 29 - Prospect south from qvs found Aug 27, several ocs mainly siltstone, run into swamp to the south
- Total 4 days prospecting P. Lassila, 1 day F. Houghton
- Total 2 days Power washing Philip and Frank Houghton

Page 1

Hwy 801 Prospect 1995 Lassila Work Log

Aug. 19, 20 Geological tour; John Mason, Greg  
(no work on prop.) Scott, Jack Parker Elmhurst, Rick Kaley  
Twps, and Onaman Lake area

Aug 21 Other work

Aug 22 Lassila - Houghton prospect, just  
west of Hwy 801. Found rusty location  
with arsenopy near Fe Fm.  
(Property being staked 1-3 unit/dm, 1-4 unit/dm)

Aug 23 Lassila - Houghton handstripped  
rusty zone - very siliceous, banded (banded)  
zone about 2m wide. Location across  
strike flagged for Bulldozer stripping,  
x (Lassila mailed application for work permit)

Aug 24 \* Phoned Ed. Solongka to change part  
of OPAP from Dorothea Gold to  
Hwy 801 property (Walters Twp.)  
- was accepted via phone. Assembled  
Freewest 1990-92 data (obtained from  
Frank Houghton and planned exploration  
approach. P.M. detailed investigation  
N. side of dozer road (0 to 600w)  
found old trenches, took 3 samples  
from pyritic hematitic zone

Total Flagged locations for bulldozer  
3 days prospecting stripping. Houghton, 2 days prospecting

## Hwy 801 Prospect, 1995 Lassila work Log

P. Lassila &amp; F. Houghton

Aug. 30: Rain until 10 AM — Prospected (examined) large stripped alteration zone (Freewest 1990-91) which has had considerable previous sampling. Marked two locations for plugger drilling and blasting, took two samples of qtz-carb veining with py & aspy sulfides, from <sup>Aug 26 & 27</sup> power washed locations.

Sept. 1 Other work

Sept. 2 Prospected area west and N.W. of large stripped zone, located two old trenches qtz-carb veinlets & carb alteration. Flagged area for bulldozer stripping (no samples taken)

Sept. 3 Other work

Sept. 4 Prospected along N edge of swamp 0 to 0 to 8 to 0 W (south of dozer road) found 30 cm qv at swamp edge at 2+60 W mainly buried under dry swamp, dug up with pick and obtained many qv pieces from swamp (3 hrs work) took two samples, also flagged two locations for bulldozer stripping where qtz-carb veinlets & ankerite alteration was observed in shear

Total

3 days Prospecting P. Lassila

1 day Prospecting F. Houghton

## Hwy 801 Prospecting, 1995 Lassila Work Log

- Sept 5  
Report  
work      Examined, described, recorded +  
packaged 12 grab samples for shipment  
to Swastika Labs., Drafted field  
map of prospecting results to date  
with sample locations,
- Sept 6      Rain, other work
- Sept 7      Prospected 16+00W to 38+00 W just  
south of lake, found large q.v.,  
handstripped 4 locations along  
120 ft, took 4 samples
- Sept 8      Prospect along N. Fe Fm west from  
14+00 W to 28+00 W, did considerable  
hand stripping using axe to cut roots,  
located substantial shear zone at 14+00W  
to 16+00 W, also magnetite partly  
altered to hematite which has local  
concentration to 38+ py and arsenopy,  
took 2 samples for assay, tight  
drag folds, folded compressed q.v.s,  
plunge 70° W.
- Sept 9      Prospect along N. Fe Fm from 28+00W  
to 36+00 west, several locations  
handstripped, Fe Fm magnetite bands  
extremely folded (compressed very elongated  
drag folds) lensy some hematite with sulfides,  
also qtz veins took 2 samples
- 4 days prospecting  
1 day report work

- Sept 10 Prospect south shore of lake and area south of BL 0100 18100W to 38100W found only siltstones and minor qtz-veins (no samples)
- Sept 11 Flagged 13 locations for bulldozer stripping near and along N Fe Fm 18100W to 33100W and also flagged bulldozer access route did some prospecting over some sheared locations, minor qtz-carb veins (no samples)
- Sept 12- Prospecting north of Fe Fm 14100W to 26100W, much swamp, some siltstone ssds.
- \* Sept 13 To Thunder Bay Ministry Office (Recording Office)
- 16 Prospect North of Fe Fm 26100W to 40100W considerable OC; all siltstone metaseds, few small qvs + weak shears
- 17 Prospect east of Road 1; metaseds locally considerable shears, few small barren looking qvs, and carbonate seams

Prospecting 5 days

- Sept. 10 Examine, describe, record, package and ship 20 rock samples (2 boxes) to Swastika Laboratories. Mark locations and numbers on a prospecting sketch (from coordinates marked on bags).
- Sept. 11 Prospect south and southwest of old backhoe trench in area south of swamp. Lots of outcrops, some minor barren-looking small quartz veins; mainly siltstone, some narrow schistose or gillite sections. No samples taken.
- Sept. 19 Prospect south of baseline in far west. Run into swamp to the south. Mainly siltstones north and south of beaver pond off west end of lake. No samples.
- Sept. 25 Prospect NW part of property (north of old baseline), hilly country, moderate outcrop all siltstone.

4 days prospecting work.

Summary: F. Houghton prospecting 4 days  
 R. Houghton and F. Houghton  
 powerwashing 2 days  
 P. Lassila prospecting 23 days

## Report Preparation

- Oct. 11 Assembled supporting data for report  
and photocopied 6 copies, also completed  
Figures 1, 2, 3 and 4 and photocopied
- Oct 17 Drafted prospecting map
- Oct. 20 Photocopied map and spliced  
6 copies, start writing report
- Oct. 28 Finish writing report & sent  
for typing.
- Nov. 06 Photocopy six copies of report  
and other documents, assembled  
6 copies

5 days report work

J. Laseila

Nov. 06/95

ADDRESSES OF WORKERS

P. Lassila: 68 Albery Cres., Ajax, Ontario, L1S 2Y3

Frank Houghton: P.O. Box 164, Beardmore, Ontario, POT 1G0

Philip Houghton: P.O. Box 164, Beardmore, Ontario, POT 1G0

COST LISTS

COST LIST

(Highway 801 Property, Walters Twp., Ont.)

F. Houghton prospecting, 4 days	\$ 400.
Contracted power washing, 2 days	650.
P. Lassila prospecting, 23 days	2300.
P. Lassila report preparation, 5 days	500.
Truck costs: 23 days x 80km x \$0.30	552.
P. Lassila board and lodging: 23 x \$45.	1035
Assays: \$116.96 + \$184.78	302.
Flagging	14.
Report materials and drafting supplies	20.
Photocopying six copies (report, supporting documents, map)	36.
Typing	<u>40.</u>
Total Costs	\$ 5849.

*P Lassila*  
P. Lassila

## WORK RECEIPTS

Highway 801 Property, Walter's Twp. Ont.

Frank Houghton, Prospecting  
Aug. 23, 24, 25 and Aug. 30, 1995.

4 days x \$100 = \$400.00

Sept. 15, 1995 received payment  
of \$400.00 from P. Lassila for 4 days  
prospecting work on the Highway 801  
Property in Walter's Twp. Ontario.

F. Houghton  
~~Frank Houghton~~

From: Philip Houghton  
To Pentti Lassila

Contract Charges

Philip Houghton and Frank Houghton  
Power washing outcrop on Aug. 26 and  
27, 1995, on the Highway 801 Property  
in Walter's Twp. Ontario.

Mob<sup>and</sup> demob of pump and equipment  
plus power washing, two days, two  
men:  $2 \times \$150 \times 2 \text{ days} =$  \$600.00  
Equipment Rental 50.00  
Total \$650.00

Contracted to Philip Houghton

Sept. 15, 1995: Received \$650.00 from  
P. Lassila, for contract payment for  
power-washing on the Highway 801  
Property, Walter's Twp. Ont.

~~Philip Houghton~~  
P. Houghton



Ontario

Ministry of Northern Development and Mines

# Report of Work Conducted After Recording Claim

Mining Act

Transaction Number  
**W9540-316**

Personal information collected on this form is obtained under the authority of the Mining Act. This information will be used for correspondence. Questions about this collection should be directed to the Provincial Manager, Mining Lands, Ministry of Northern Development and Mines, Fourth Floor, 159 Cedar Street, Sudbury, Ontario, P3E 6A5, telephone (705) 670-7264.

- Instructions:
- Please type or print and submit in duplicate.
  - Refer to the Mining Act and Regulations for requirements of filing assessment work or consult the Mining Recorder.
  - A separate copy of this form must be completed
  - Technical reports and maps must accompany th
  - A sketch, showing the claims the work is assign



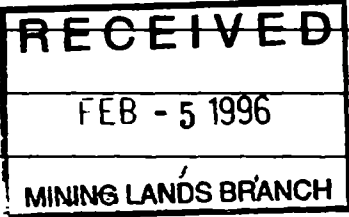
42E12NE0142 2 16391 WALTERS

900

Recorded Holder(s) ① Frank Houghton 50% ② Pentti Lassila 50%	Telephone No. 176034 157595
Address ① PO Box 164 Beardmore, Ontario POT 160 ② 68 Albany Cres Ajax Ontario L1S 2Y3	Telephone No. (905) 875-2604 (905) 683-4429
Mining Division Thunder Bay Ont	M or G Plan No. G-0171
Township/Area Walters Twp	
Date Work Performed From: Aug. 22, 1995	To: Sept. 25, 1995

### Work Performed (Check One Work Group Only)

Work Group	Type
Geotechnical Survey	Prospecting
Physical Work, Including Drilling	
Rehabilitation	
Other Authorized Work	
Assays	
Assignment from Reserve	



Total Assessment Work Claimed on the Attached Statement of Costs \$ 4508 3428 4508

Note: The Minister may reject for assessment work credit all or part of the assessment work submitted if the recorded holder cannot verify expenditures claimed in the statement of costs within 30 days of a request for verification.

### Persons and Survey Company Who Performed the Work (Give Name and Address of Author of Report)

Name	Address
Pentti Lassila	68 Albany Cres, Ajax Ont L1S 2Y3
Frank Houghton	P.O. Box 164 Beardmore Ont POT 160

(attach a schedule if necessary)

### Certification of Beneficial Interest \* See Note No. 1 on reverse side

I certify that at the time the work was performed, the claims covered in this work report were recorded in the current holder's name or held under a beneficial interest by the current recorded holder.	Date Nov. 14, 1995	Recorded Holder or Agent (Signature) P Lassila
--	-----------------------	---

### Certification of Work Report

I certify that I have a personal knowledge of the facts set forth in this Work report, having performed the work or witnessed same during and/or after its completion and annexed report is true.		
Name and Address of Person Certifying Pentti Lassila 68 Albany Cres, Ajax Ont, L1S-2Y3		
Telephone No. (905) 683-4429	Date Nov. 14, 1995	Certified By (Signature) P. Lassila

### For Office Use Only

Total Value Cr. Recorded <b>3428</b>	Date Recorded	Mining Recorder M. G. Weir	Received Stamp MINING LANDS BRANCH SUDBURY DEC 7 1995
	Deemed Approval Date Mar 6/96	Date Approved	
	Date Notice for Amendments Sent		





Ministry of  
Northern Development  
and Mines

Ministère du  
Développement du Nord  
et des mines

Statement of Costs  
for Assessment Credit

État des coûts aux fins  
du crédit d'évaluation

Mining Act/Loi sur les mines

Transaction No./N° de transaction

W9540-316

2.16891

1127876

Personal information collected on this form is obtained under the authority of the Mining Act. This information will be used to maintain a record and ongoing status of the mining claim(s). Questions about this collection should be directed to the Provincial Manager, Minings Lands, Ministry of Northern Development and Mines, 4th Floor, 159 Cedar Street, Sudbury, Ontario P3E 6A5, telephone (705) 670-7264.

Les renseignements personnels contenus dans la présente formule sont recueillis en vertu de la Loi sur les mines et serviront à tenir à jour un registre des concessions minières. Adresser toute question sur la collecte de ces renseignements au chef provincial des terrains miniers, ministère du Développement du Nord et des Mines, 159, rue Cedar, 4<sup>e</sup> étage, Sudbury (Ontario) P3E 6A5, téléphone (705) 670-7264.

1. Direct Costs/Coûts directs

Type	Description	Amount Montant	Totals Total global
Wages Salaires	Labour Main-d'oeuvre	450	2550
	Field Supervision Supervision sur le terrain	3000	
Contractor's and Consultant's Fees Droits de l'entrepreneur et de l'expert- conseil	Type		
	Assays	197	237
	Typing Rpt	40	
Supplies Used Fournitures utilisées	Type		
	Flaying etc	84	70
	(Copies) Report Materials	20	
(Copies) Photocopying	36		
Equipment Rental Location de matériel	Type		
Total Direct Costs Total des coûts directs			3757

2857  
3757

2. Indirect Costs/Coûts indirects

\*\* Note: When claiming Rehabilitation work Indirect costs are not allowable as assessment work. Pour le remboursement des travaux de réhabilitation, les coûts indirects ne sont pas admissibles en tant que travaux d'évaluation.

Type	Description	Amount Montant	Totals Total global
Transportation Transport	Type		
	Pickup		400
	Truck	400	
Food and Lodging Nourriture et hébergement			700
Mobilization and Demobilization Mobilisation et démobilisation			0
Sub Total of Indirect Costs Total partiel des coûts indirects			1300
Amount Allowable (not greater than 20% of Direct Costs) Montant admissible (n'excédant pas 20 % des coûts directs)			271
Total Value of Assessment Credit (Total of Direct and Allowable indirect costs)			4508

751  
571  
4508  
3428, 4508

Note: The recorded holder will be required to verify expenditures claimed in this statement of costs within 30 days of a request for verification. If verification is not made, the Minister may reject for assessment work all or part of the assessment work submitted.

Note: Le titulaire enregistré sera tenu de vérifier les dépenses demandées dans le présent état des coûts dans les 30 jours suivant une demande à cet effet. Si la vérification n'est pas effectuée, le ministre peut rejeter tout ou une partie des travaux d'évaluation présentés.

Filing Discounts

Work filed within two years of completion is claimed at 100% of the above Total Value of Assessment Credit.

Work filed three, four or five years after completion is claimed at 50% of the above Total Value of Assessment Credit. See calculations below:

Total Value of Assessment Credit	Total Assessment Claimed
	x 0.50 =

Remises pour dépôt

1. Les travaux déposés dans les deux ans suivant leur achèvement sont remboursés à 100 % de la valeur totale susmentionnée du crédit d'évaluation.

2. Les travaux déposés trois, quatre ou cinq ans après leur achèvement sont remboursés à 50 % de la valeur totale du crédit d'évaluation susmentionné. Voir les calculs ci-dessous.

Valeur totale du crédit d'évaluation	Evaluation totale demandée
	x 0,50 =

Certification Verifying Statement of Costs

I hereby certify that the amounts shown are as accurate as possible and these costs were incurred while conducting assessment work on the lands shown on the accompanying Report of Work form.

I, as \_\_\_\_\_ I am authorized  
(Recorded Holder, Agent, Position in Company)

I make this certification

Attestation de l'état des coûts

J'atteste par la présente que les montants indiqués sont le plus exact possible et que ces dépenses ont été engagées pour effectuer les travaux d'évaluation sur les terrains indiqués dans la formule de rapport de travail ci-joint.

Et qu'à titre de \_\_\_\_\_ je suis autorisé  
(titulaire enregistré, représentant, poste occupé dans la compagnie)

à faire cette attestation.

Signature: [Signature] Date: Nov 14/1995



Ministry of  
Northern Development  
and Mines

Ontario

# Report of Work Conducted Before Recording Claim

Mining Act

Transaction Number

W9540-317

Personal information collected on this form is obtained under the authority of the Mining Act. This information will be used for correspondence. Questions about this collection should be directed to the Provincial Manager, Mining Lands, Ministry of Northern Development and Mines, Fourth Floor, 159 Cedar Street, Sudbury, Ontario, P3E 6A5, telephone (705) 670-7264.

2.153 91

- Instructions:**
- Please type or print and submit in duplicate.
  - Refer to the Mining Act and Regulations for requirements of filing assessment work or consult the Mining Recorder.
  - A separate copy of this form must be completed for each Work Group.
  - Technical reports and maps must accompany this form in duplicate.
  - A sketch, showing the claims the work is assigned to, must accompany this form.

Recorded Holder(s) ① Frank Houghton 50%	Client No. 746058
② Pentti Lassila 50%	157575
Address ① PO Box 164 Beardmore, Ontario P0T 1G0	Telephone No. (705) 875-2604
② 68 Albany Cres, Ajax, Ontario L1S 2Y3	(905) 683-4429
Mining Division Thunder Bay	Township/Area Walters Twp.
	M or G Plan No. 6-0171
Dates Work Performed From: Aug 22, 1995 To: Sept 25, 1995	

note this claim was originally staked on Aug 22, 1995

Work Performed (Check One Work Group Only) as a 3unit claim # TB 112 2877 at Lassila/Houghton

Work Group	Type
Regional Surveys	
Prospecting	Prospecting

RECEIVED

FEB - 5 1996

Total Assessment Work Claimed on the Attached Statement of Costs \$ 1800

MINING LANDS BRANCH

**Note:** The Minister may reject for assessment work credit all or part of the assessment work submitted if the recorded holder cannot verify expenditures claimed in the statement of costs within 30 days of a request for verification.

Persons and Survey Company Who Performed the Work (Give Name and Address of Author of Report)

Name	Address
Pentti Lassila	68 Albany Cres Ajax Ont L1S-2Y3
Frank Houghton	P.O. Box 164 Beardmore Ont P0T-1G0

(attach a schedule if necessary)

Certification of Beneficial Interest \* See Note No. 1 on reverse side

I certify that at the time the work was performed, the claims covered in this work report were recorded in the current holder's name or held under a beneficial interest by the current recorded holder.	Date Nov. 14/95	Recorded Holder or Agent (Signature) Pentti Lassila
--	--------------------	--

Certification of Work Report

I certify that I have a personal knowledge of the facts set forth in this work report, having performed the work or witnessed it during and/or after its completion, and the annexed report is true.		
Name and Address of Person Certifying Pentti Lassila 68 Albany Cres, Ajax, Ontario L1S-2Y3		
Telephone No. (905) 683-4429	Date Nov 14, 1995	Certified By (Signature) P Lassila

For Office Use Only

Total Value Cr. Recorded 1800	Date Recorded	Mining Recorder M. G. Williams	Received Stamp NOV 14 1995
	Deemed Approval Date Mar 6/96	Date Approved	MINING DIVISION THUNDER BAY ONTARIO
	Date Notice for Amendments Sent		





Ministry of  
Northern Development  
and Mines

Ministère du  
Développement du Nord  
et des mines

1122875

**Statement of Costs  
for Assessment Credit**

**État des coûts aux fins  
du crédit d'évaluation**

Mining Act/Loi sur les mines

Transaction No./N° de transaction  
W9540-317

2000031

Personal information collected on this form is obtained under the authority of the Mining Act. This information will be used to maintain a record and ongoing status of the mining claim(s). Questions about this collection should be directed to the Provincial Manager, Minings Lands, Ministry of Northern Development and Mines, 4th Floor, 159 Cedar Street, Sudbury, Ontario P3E 6A5, telephone (705) 670-7264.

Les renseignements personnels contenus dans la présente formule sont recueillis en vertu de la Loi sur les mines et serviront à tenir à jour un registre des concessions minières. Adresser toute question sur la collecte de ces renseignements au chef provincial des terrains miniers, ministère du Développement du Nord et des Mines, 159, rue Cedar, 4<sup>e</sup> étage, Sudbury (Ontario) P3E 6A5, téléphone (705) 670-7264.

**1. Direct Costs/Coûts directs**

Type	Description	Amount Montant	Totals Total global
Wages Salaires	Labour <i>Prospecting Houghton</i> Main-d'oeuvre <i>Lussida</i>	150 1200	
	Field Supervision Supervision sur le terrain	0	1350
Contractor's and Consultant's Fees Droits de l'entrepreneur et de l'expert-conseil	Type		
	<i>Assays</i>	150	150
Supplies Used Fournitures utilisées	Type		
Equipment Rental Location de matériel	Type		
<b>Total Direct Costs Total des coûts directs</b>			<b>1500</b>

**2. Indirect Costs/Coûts indirects**

\*\* Note: When claiming Rehabilitation work Indirect costs are not allowable as assessment work.  
Pour le remboursement des travaux de réhabilitation, les coûts indirects ne sont pas admissibles en tant que travaux d'évaluation.

Type	Description	Amount Montant	Totals Total global
Transportation Transport	Type		
	<i>Pickup Truck</i>	120	
Food and Lodging Nourriture et hébergement			
		360	360
Mobilization and Demobilization Mobilisation et démoblisation			
<b>Sub Total of Indirect Costs Total partiel des coûts indirects</b>			<b>480</b>
<b>Amount Allowable (not greater than 20% of Direct Costs) Montant admissible (n'excédant pas 20 % des coûts directs)</b>			<b>300</b>
<b>Total Value of Assessment Credit (Total of Direct and Allowable indirect costs)</b>			<b>1800</b>

RECEIVED  
FEB - 5 1996  
MINING LANDS BRANCH

Note: The recorded holder will be required to verify expenditures claimed in this statement of costs within 30 days of a request for verification. If verification is not made, the Minister may reject for assessment work all or part of the assessment work submitted.

Note : Le titulaire enregistré sera tenu de vérifier les dépenses demandées dans le présent état des coûts dans les 30 jours suivant une demande à cet effet. Si la vérification n'est pas effectuée, le ministre peut rejeter tout ou une partie des travaux d'évaluation présentés.

**Filing Discounts**

1. Work filed within two years of completion is claimed at 100% of the above Total Value of Assessment Credit.
2. Work filed three, four or five years after completion is claimed at 50% of the above Total Value of Assessment Credit. See calculations below:

Total Value of Assessment Credit	Total Assessment Claimed
	× 0.50 =

**Remises pour dépôt**

1. Les travaux déposés dans les deux ans suivant leur achèvement sont remboursés à 100 % de la valeur totale susmentionnée du crédit d'évaluation.
2. Les travaux déposés trois, quatre ou cinq ans après leur achèvement sont remboursés à 50 % de la valeur totale du crédit d'évaluation susmentionné. Voir les calculs ci-dessous.

Valeur totale du crédit d'évaluation	Évaluation totale demandée
	× 0,50 =

**Certification Verifying Statement of Costs**

I hereby certify that the amounts shown are as accurate as possible and these costs were incurred while conducting assessment work on the lands shown on the accompanying Report of Work form.

I, \_\_\_\_\_, am authorized  
(Recorded Holder, Agent, Position in Company)

I make this certification

**Attestation de l'état des coûts**

J'atteste par la présente que les montants indiqués sont le plus exact possible et que ces dépenses ont été engagées pour effectuer les travaux d'évaluation sur les terrains indiqués dans la formule de rapport de travail ci-joint.

Et qu'à titre de \_\_\_\_\_ je suis autorisé  
(titulaire enregistré, représentant, poste occupé dans la compagnie)

à faire cette attestation.

Signature *J. Lassila* Date *Nov 14/95*



Ministry of  
Northern Development  
and Mines

Ministère du  
Développement du Nord  
et des Mines

Geoscience Approvals Office  
933 Ramsey Lake Road  
6th Floor  
Sudbury, Ontario  
P3E 6B5

Telephone: (705) 670-5853  
Fax: (705) 670-5863

February 22, 1996

Our File: 2.16391  
Transaction #: W9540.00316  
W9540.00317

Mining Recorder  
Ministry of Northern Development & Mines  
435 James Street South  
Suite B003  
Thunder Bay, Ontario  
P7E 6E3

Dear Mr. Weirmeir:

**Subject: APPROVAL OF ASSESSMENT WORK CREDITS ON MINING CLAIMS  
1122876 & 1122875 IN WALTERS TOWNSHIP**

Assessment credits have been approved as outlined on the attached report of work form. The credits have been approved under Section 9 (Prospecting) of the Mining Act Regulations.

**The approval date is February 20, 1996.**

If you have any questions regarding this correspondence, please contact Steven Beneteau at (705) 670-5855.

Yours sincerely,  
ORIGINAL SIGNED BY:

A handwritten signature in black ink, appearing to read "Ron C. Gashinski".

Ron C. Gashinski  
Senior Manager, Mining Lands Section  
Mining and Land Management Branch  
Mines and Minerals Division

SBB/jl  
Enclosure:

cc: Resident Geologist  
Thunder Bay, Ontario

✓ Assessment Files Library  
Sudbury, Ontario

**VALUE OF ASSESSMENT WORK PERFORMED ON MINING CLAIMS**

**FEBRUARY 22, 1996  
FILE NUMBER 2.16391  
TRANSACTION NO. W9550.00316**

<b>CLAIM NUMBER</b>	<b>VALUE OF ASSESSMENT WORK DONE ON THIS CLAIM</b>
1122876	\$4,508.00 -----
<b>TOTAL</b>	<b>\$4,508.00</b>

**February 22, 1996  
FILE NUMBER 2.16391  
TRANSACTION NO. W9550.00317**

<b>CLAIM NUMBER</b>	<b>VALUE OF ASSESSMENT WORK DONE ON THIS CLAIM</b>
1122875	\$1,800.00 -----
<b>TOTAL</b>	<b>\$1,800.00</b>

G-171

G-171

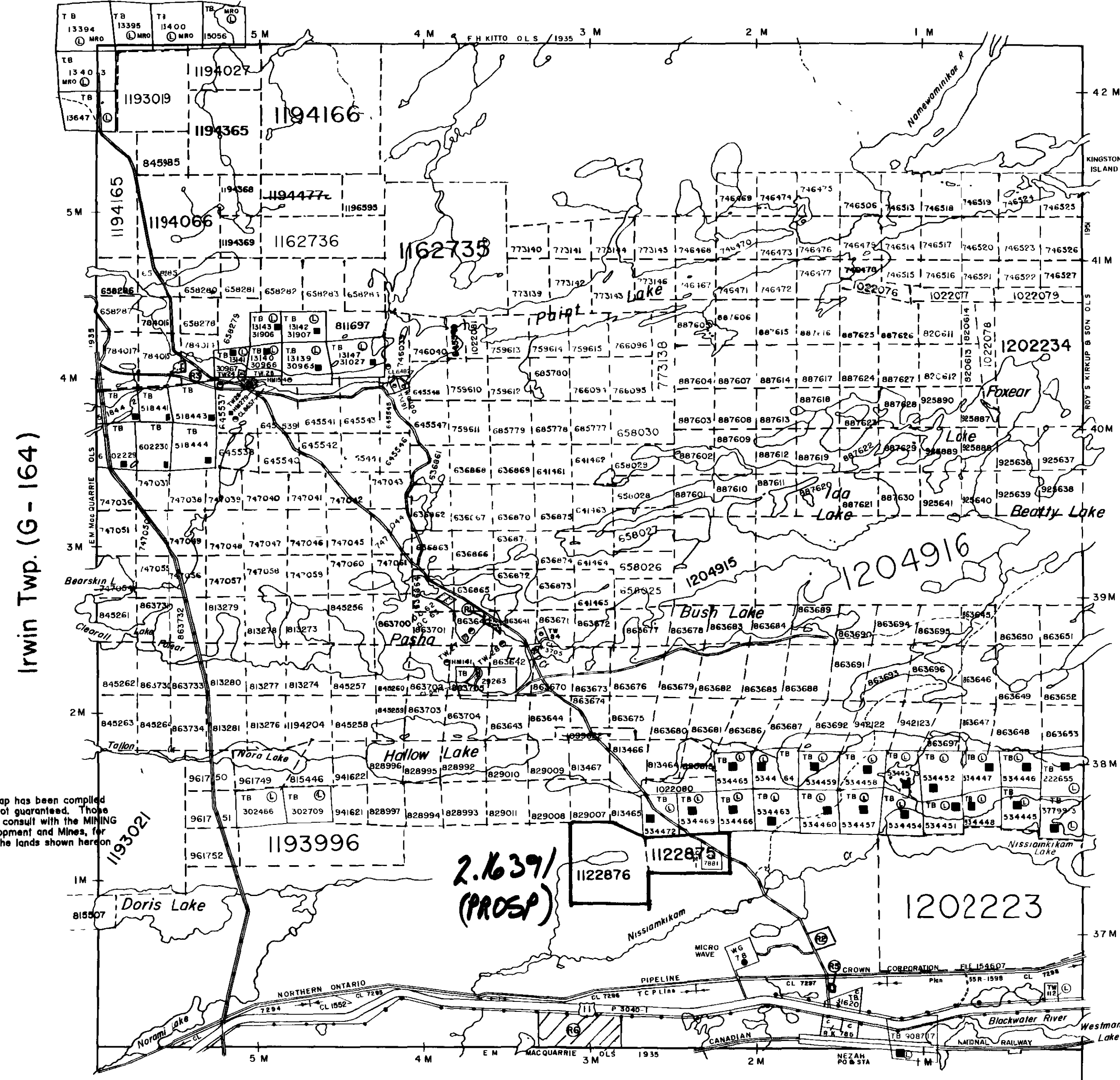
WALTERS TWP

WALTERS TWP

G-171

G-171

# Elmhirst Twp.(G - 162)



NOTICE-  
The information that appears on this map has been compiled from various sources and accuracy is not guaranteed. Those wishing to stake MINING CLAIMS should consult with the MINING RECORDER, Ministry of Northern Development and Mines, for additional information on the status of the lands shown hereon.

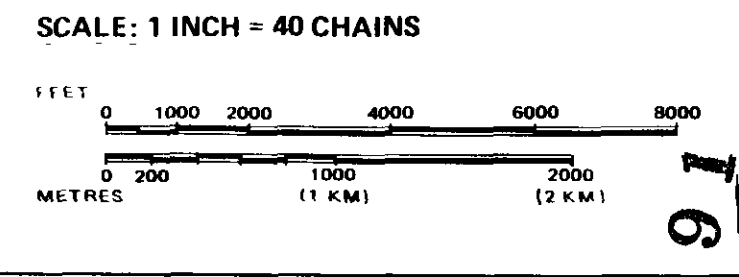
### AREAS WITHDRAWN FROM DISPOSITION

Description	Order No	Date	Disposition	File
(R1) MNR RESERVE.	File 77094			
(R2) SURFACE RIGHTS ONLY WITHDRAWN FROM STAKING ORDER W-07/90 COMMUNICATION TOWER SITE FOR DOMTAR INC DATED 02/06/90				
(R3) SURFACE RIGHTS ONLY WITHDRAWN FROM STAKING. SECTION 35/80. ORDER W-14/92 WASTE DISPOSAL SITE. DATED 08/11/92. FILE 188528				
(R4) SURFACE RIGHTS ONLY WITHDRAWN FROM STAKING. SECTION 31(b). DATED 02/06/91 INTERCONNECT BASE STATION.				
(R5) SURFACE RIGHTS ONLY WITHDRAWN FROM STAKING ORDER W-TB-54/93 DATED 08/22/93. WASTE DISPOSAL SITE.				

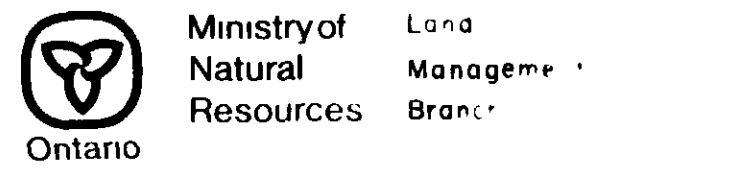
THE SURFACE RIGHTS LYING WITHIN 40.25 M OF THE CENTER-LINE OF THE TRANS-CANADA PIPELINE RIGHT-OF-WAY ARE WITHDRAWN FROM STAKING OUT, PROSPECTING, SALE OR LEASE BY ORDER W-01/91 ONT DATED SEPT. 20/91 SECTION 112 OF THE NATIONAL ENERGY ACT APPLIES TO THIS AREA

### LEGEND

PATENTED LAND	Ⓟ
CROWN LAND SALE	C.S
LEASES	Ⓞ
LOCATED LAND	Loc
LICENSE OF OCCUPATION	L.O
MINING RIGHTS ONLY	M.R.O
SURFACE RIGHTS ONLY	S.R.O
ROADS	—
IMPROVED ROADS	—
KING'S HIGHWAYS	—
RAILWAYS	—
POWER LINES	—
MARSH OR MUSKEG	—
MINES	—
CANCELLED	—
PATENT, SURFACE & MINING RIGHTS	—
SURFACE RIGHTS ONLY	—
LAND USE PERMITS FOR COMMERCIAL TOURISM, OUTPOST CAMPS	—

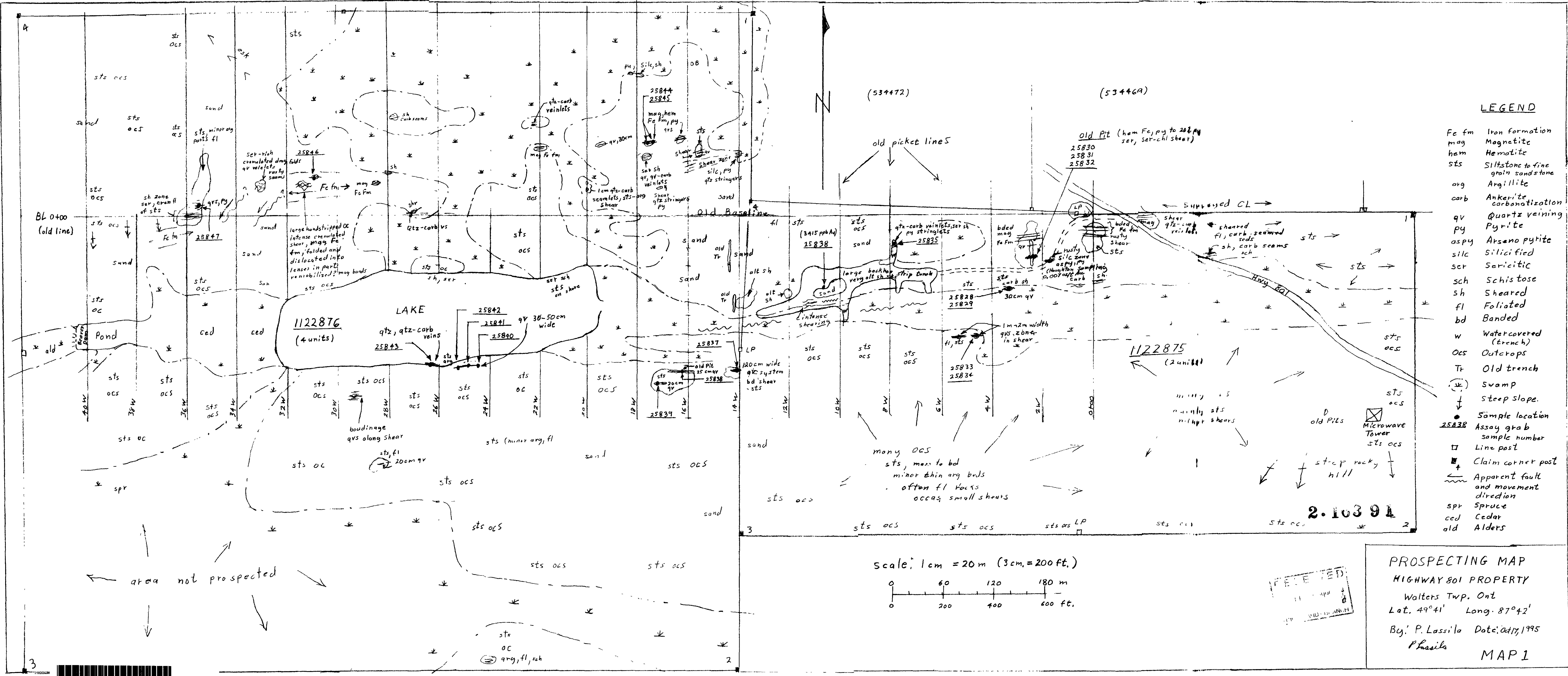


TOWNSHIP OF  
**WALTERS**  
M.N.R. ADMINISTRATIVE DISTRICT  
**NIPIGON**  
MINING DIVISION  
**THUNDER BAY**  
LAND TITLES / REGISTRY DIVISION  
**THUNDER BAY**



February, 1981  
In Service Nov. 07/95 (LA)  
**G-171**





**LEGEND**

- Fe fm Iron formation
- mag Magnetite
- hem Hematite
- sts Siltstone to fine grain sandstone
- arg Argillite
- carb Ankerite carbonatization
- qv Quartz veining
- py Pyrite
- aspy Arsenopyrite
- silc Silicified
- scr Sericitic
- sch Schistose
- sh Sheared
- fl Foliated
- bd Banded
- w Watercovered (trench)
- ocs Outcrops
- Tr Old trench
- (swamp) Swamp
- ↓ steep slope
- Sample location
- 25838 Assay grab sample number
- Line post
- ⊕ Claim corner post
- ↔ Apparent fault and movement direction
- spr Spruce
- ced Cedar
- ald Alders

PROSPECTING MAP  
 HIGHWAY 801 PROPERTY  
 Walters Twp. Ont  
 Lat. 49°41' Long. 87°42'  
 By: P. Lassila Date: Oct 17, 1995  
 P. Lassila  
 MAP 1

scale: 1 cm = 20 m (3 cm = 200 ft.)

