



52K15NW0240 14 FREDART LAKE

010

Diamond Drilling

Area of FREDART LAKE

Report NO 14

Work performed by: Consolidated Copperlode Developments Inc.

Claim NO	Hole NO	Footage	Date	Note
KRL 481617	77-2	500.0'	Mar/77	(1)
	77-3	501.8'	Aug/77	(2)
	77-4	500.0'	Aug/77	(2)

Notes:

(1) #19-78

(2) #40-78



52K15NW0240 14 FREDART LAKE

020

SUMMARY REPORT ON

DRILL PROGRAM

CONSOLIDATED COPPERLODE DEVELOPMENT'S INC.
FREDART LAKE PROPERTY
RED LAKE , ONTARIO

FREDERICK T. ARCHIBALD, B.Sc. Geologist
January 9, 1973.

SUMMARY REPORT
CONSOLIDATED COPPERLODE DEVELOPMENTS INC.
RED LAKE PROPERTY

INTRODUCTION:

Zone A consists of a series of en-echelon lenses of copper sulphides in two or three bands of iron formation and show appreciable copper and silver values. The diamond drilling over this zone indicates that this zone contains approximately 236,400 tons averaging 1.94% copper and 1.22 ounces of silver per ton or 425,600 tons averaging 1.56% copper and 0.98 ounces of silver per ton (C. W. Archibald, March 1977). These figures were obtained over a 1,400 foot strike length and an average vertical range of about 400 feet with minimum widths of 5 feet.

It has been surmised from the diamond drilling done on this zone that the zone becomes wider and deeper to the east but contains lower values in copper and silver.

The purpose of drilling holes 77-2, 77-3 and 77-4 on claim 481617 was to find an extension of Zone A to see if it would become economically feasible to mine. These holes were drilled over a low intensity induced polarization anomaly.

Molybdenum mineralization is evident along with disseminated copper in the diorites in claim 481615. As a large part of the disseminated molybdenum showing in claim 481615 outcrops and is evenly distributed throughout, the idea is to sample a 160 foot by 60 foot area to test for an overall grade. Since difficulty was encountered in obtaining a representative bulk sample from blasting trenches, the bulk test was accomplished by sampling a grid of sixty-four 20 foot deep holes with a grid spacing of about 15 feet apart.

CONCLUSIONS:

Hole 77-2 intersected, at a depth of 80 feet and 180 feet, a two foot copper mineralized section averaging 1.99% and 2.34% copper respectively.

Hole 77-3, drilled 200 feet east of 77-2, had 1.5 foot core intersections at 160 feet, 248 feet and 428 feet containing 2.67%, 0.69% and 5.38% copper respectively.

Hole 77-4 was drilled 200 feet east of 77-3. It intersected a three foot section at a depth of 482 feet which assayed 0.22% copper.

A 'Pulse' Electromagnetic Survey run over the area where these holes were drilled showed a down-east rake and a continuation of the anomalous zone deeper and to the south-east.

These three holes are thought to have therefore been drilled overtop of the main anomaly and copper values encountered could be the upward and borderline expression of a larger and stronger body of sulphides.

The results of the large size 'NQ' drilling indicated parallel lenses of biotite schist and amphibolite in diorite trending east-west and dipping steeply 75 to 90 degrees to the south. The highest assay was 0.03% Mo, which would not be economically feasible to mine in an open pit operation. The higher Mo values are found in the

amphibolite lenses within the diorites. The average molybdenum content was below 0.01%. Copper values were also very low. Values are too low in the molybdenum showing to warrant any further work in this zone.

Yours respectfully,



Toronto, Ontario
January 9th, 1978.

F. T. Archibald, B.Sc., Geologist.

DIAMOND DRILL HOLE 77-2

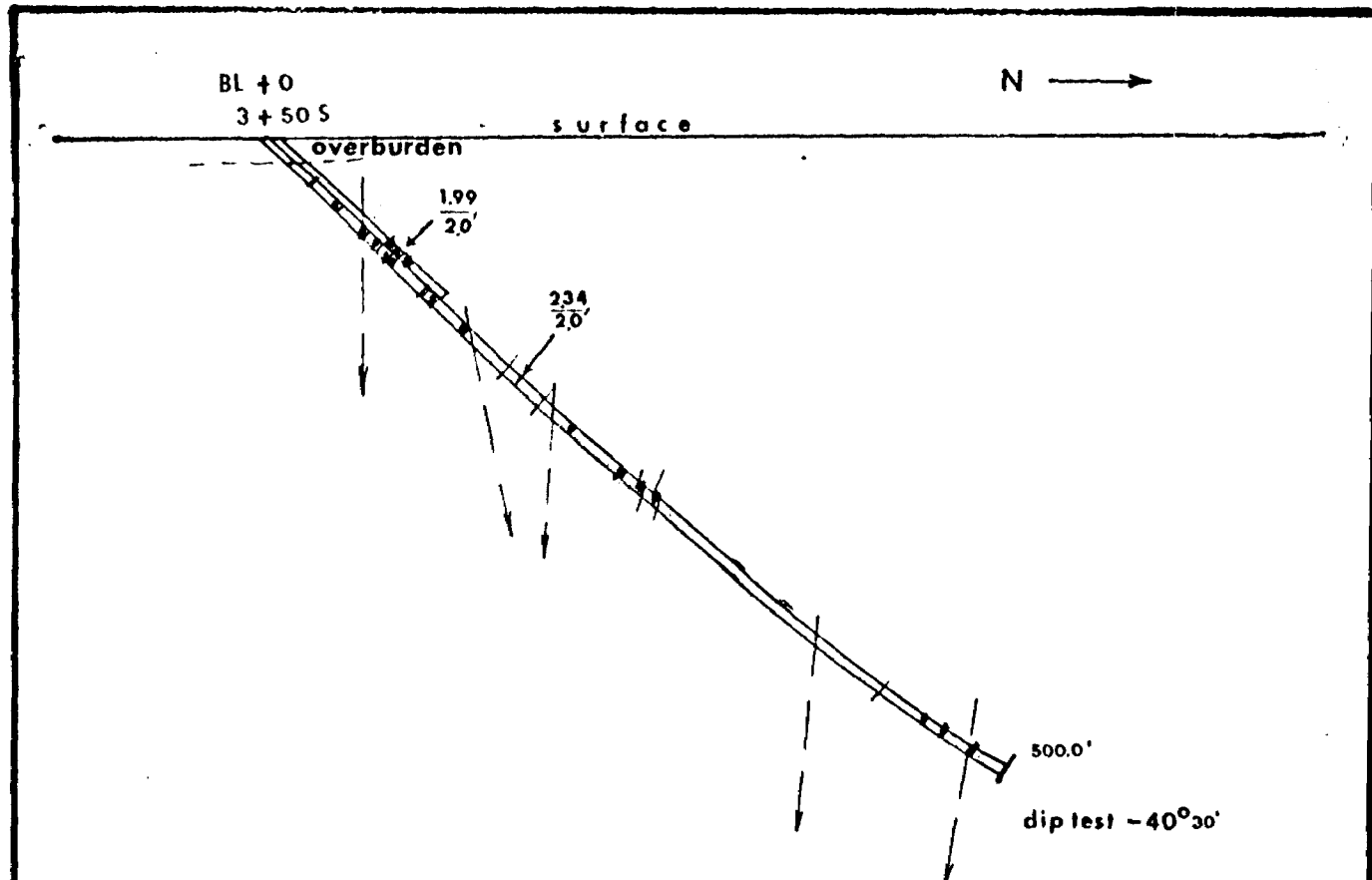
LOCATION: Copper-Lode

LATITUDE:
DEPARTURE:

BEARING:
ANGLE DIP:

STARTED:
FINISHED:
LOGGED BY:

FROM	TO	REMARKS	SAMPLE NO	SAMPLE LENGTH				
500.0		-some minor Py at 450' (1"), 462' (1"), few specks diss. throughout a predominantly biotiterich schist -Dip test taken at 500' with reading of -40° 30' END OF HOLE						



RED LAKE
MINING DIV.
RECEIVED
FEB 10 1978
A.M. P.M.
7|8|9|10|11|12|1|2|3|4|5|6

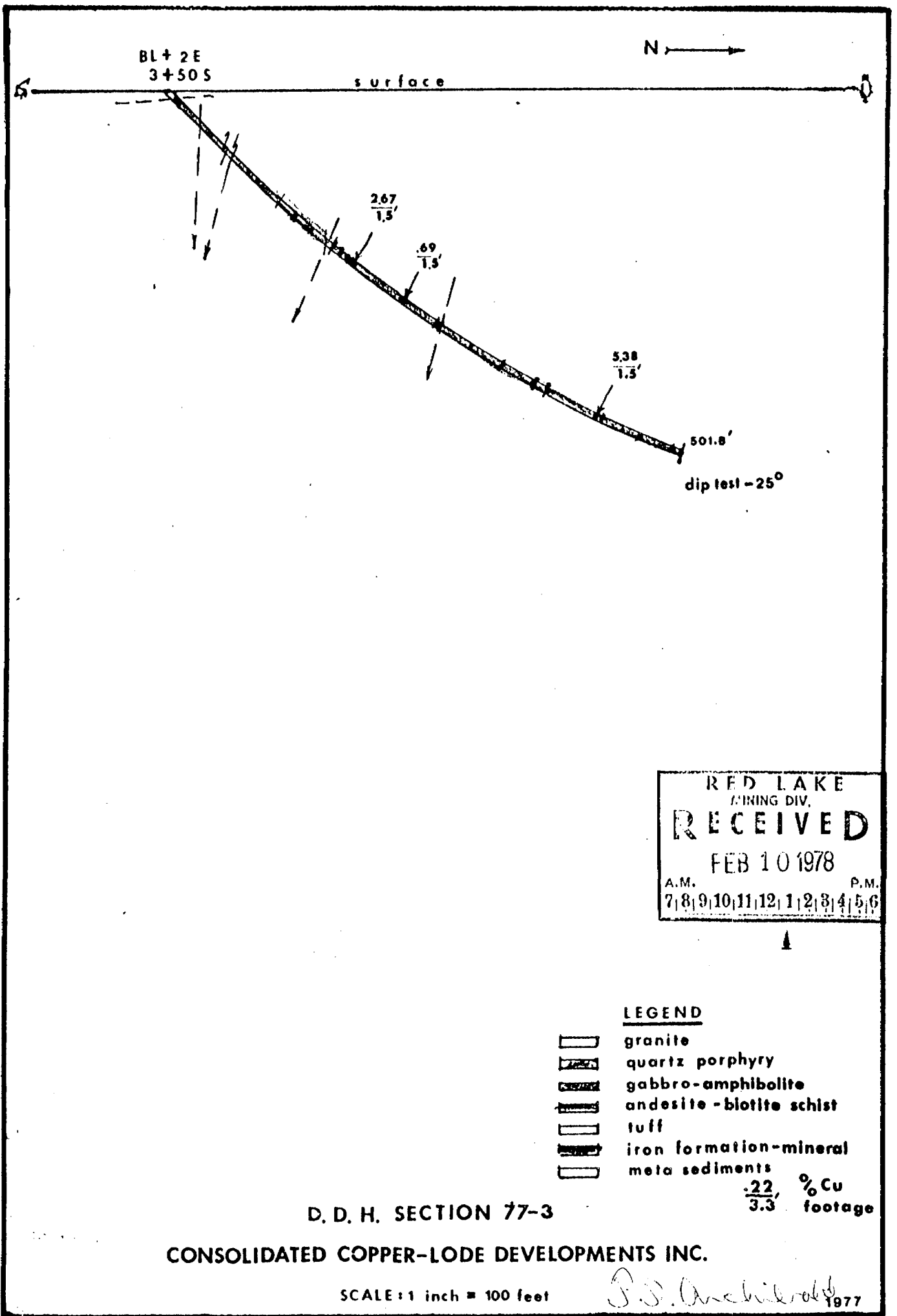
- LEGEND**
- granite
 - quartz porphyry
 - gabbro-amphibolite
 - andesite-biotite schist
 - tuff
 - iron formation-mineral
 - meta sediments

.88% Cu
8.8' footage

D. D. H. SECTION 77-2
CONSOLIDATED COPPER-LODE DEVELOPMENTS INC.

SCALE 1 inch = 100 feet

P.S. Archibald 1977



DIAMOND DRILL HOLE 77-4

LOCATION: Copper-Lode

LATITUDE: BL 4+00 E.

BEARING: North 0°

DEPARTURE: 2+50 S.

ANGLE DIP: -45°

STARTED:

FINISHED:

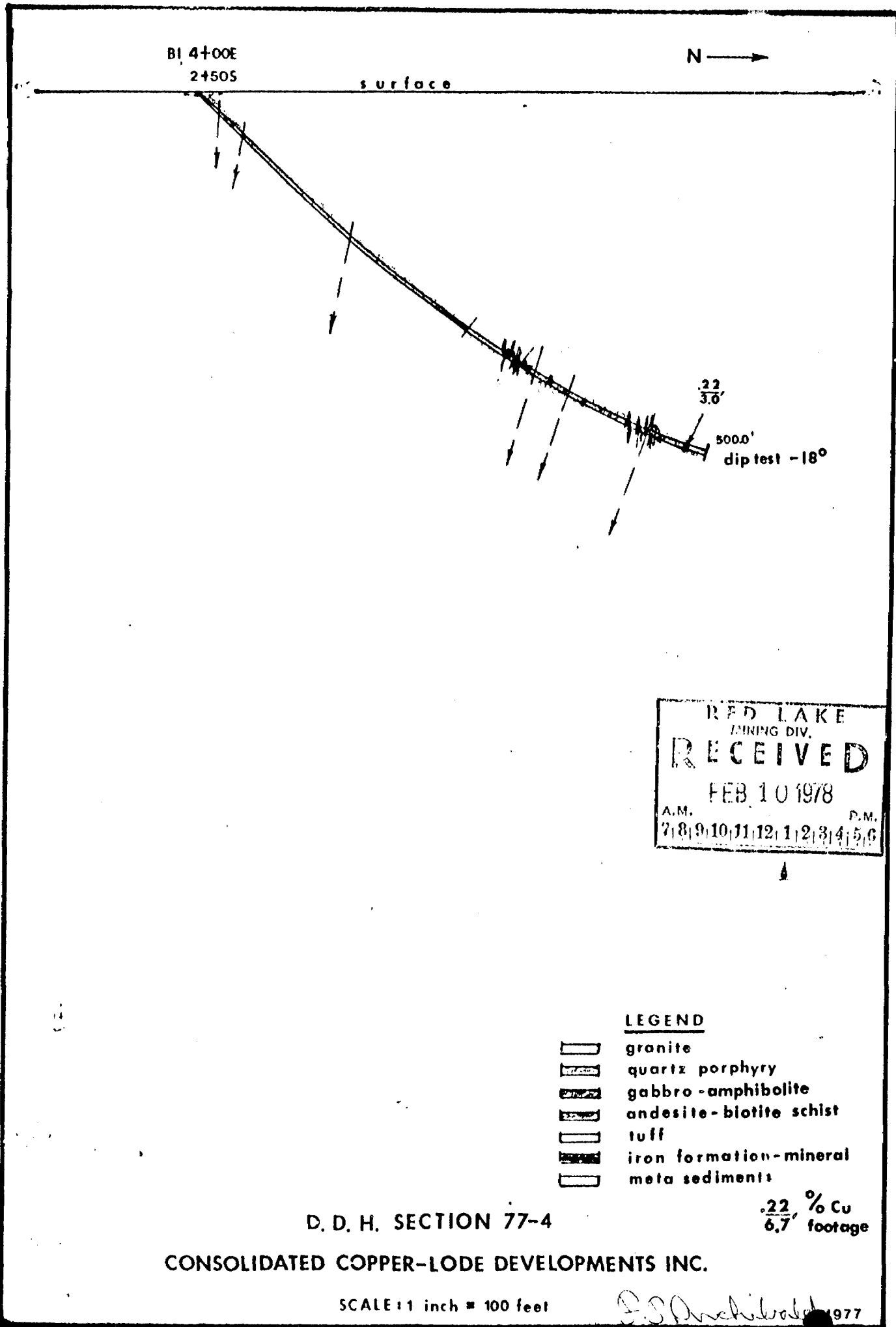
LOGGED BY: J. Carchibald

FROM	TO	REMARKS	SAMPLE NO	SAMPLE LENGTH	% Cu	% Ni	oz. Au	Oz. Ac
0	3.5'	CASING						
3.5	284.0	Quartz rich BIOTITE SCHIST- dk. grey with black biotite rich segregations, slightly bleached from 3.5-10' -after 10' core becomes dk, well-lineated (45° to core axis with few qtz. rich bands @ 28', 29', 34', 36', 47' -from 34 to 42' rock takes on gneissic appearance with some minor Py diss. through -after 42' lin-schistosity is approx. 55° to c.a. - lination less distinct from 143 to 160'. qtz. is blue-grey and sugary textured (about 80% of core) -after 160' return to strong biotite schist with minor Py along lination (60° to c.a.) @ 237.5', 247.' -after 284.0 core becomes dk. grey, med. grained amphib. (gabbro-like); 75° to core axis, mafic rich, slightly porphyritic with odd speck Py throughout; lination becomes better defined after 320'-increasingly chloritic-biotite schist sections with lin. @ 80° to core axis (some fracturing giving brecciated appearance - qtz. with minor Py @ 316' (4"), 338.5' (1"), 344' (6"), 363.5' (3"), 375.5' (3"), 392.5' (6") - increased lin. in core after 416.0' (rock is still fine grained, qtz.-rich amphibolite with specks Py through -increased schistosity from 436' to 448.0' (lin. @ 85° to core axis) in dk. green biot. schist (amphib.) -from 460-463 minor Py along schistosity -after 485 qtz. content increases, lination more predominant, gneissic looking Sampled 480-482' Diss. Cpy in Sch SAMPLED from 482.0 to 485.0' for Cu, Ni, Au in Py in a fine grained amphibolitic material Sampled 485-487' blebs Cpydiss. in Sch. and fractures END OF HOLE Sampled 498-500' - Amph. with specks Cpy -Dip test taken at 500.0' was -18°						
284.0	500.0		B-27	2.0'	0.05			0.05
			A-8	3.0	0.22	0.01	TR.	
500.0			B-28	2.0'	0.02			0.01
			B-29	2.0'	0.06			



52K15NW0240 14 FREDART LAKE

900



RED LAKE
MINING DIV.
RECEIVED
FEB 10 1978
A.M. P.M.
7 8 9 10 11 12 1 2 3 4 5 6

- LEGEND**
- granite
 - quartz porphyry
 - gabbro-amphibolite
 - andesite-biotite schist
 - tuff
 - iron formation-mineral
 - meta sediments

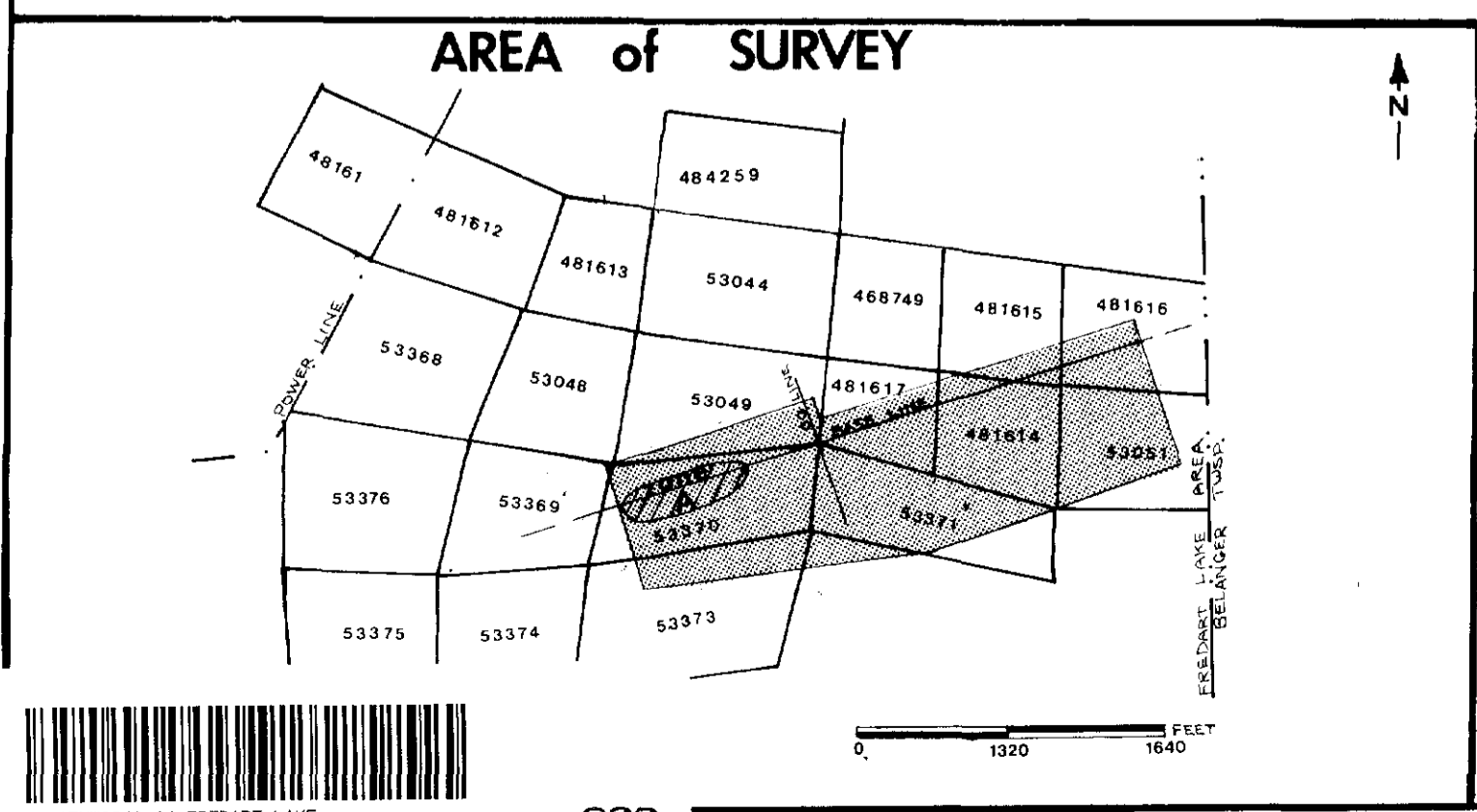
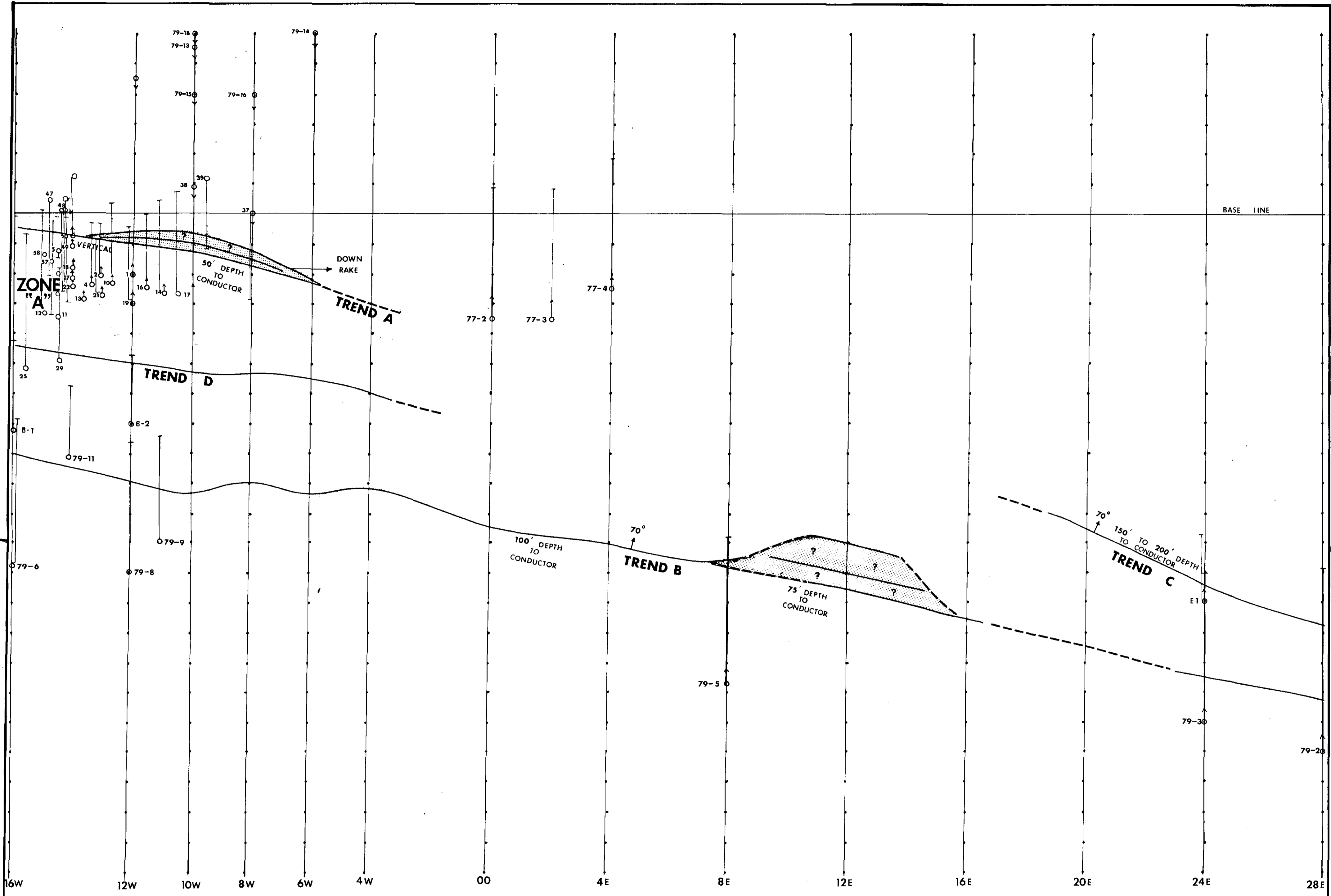
D. D. H. SECTION 77-4

.22 % Cu
6.7' footage

CONSOLIDATED COPPER-LODE DEVELOPMENTS INC.

SCALE: 1 inch = 100 feet

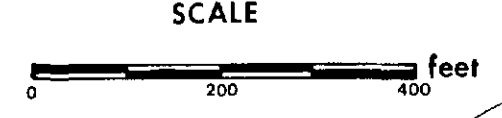
E. J. Archibald 1977



Plan
CONSOLIDATED COPPER-LODE DEV'S. INC.
PULSE E.M. SURVEY
 RED LAKE PROPERTY
 ONTARIO

LEGEND

○ D.D.H.



FT Archibald
 3 Sept 1978
 Sept 1977

