

THESE TERMS GOVERN YOUR USE OF THIS DOCUMENT

Your use of this Ontario Geological Survey document (the “Content”) is governed by the terms set out on this page (“Terms of Use”). By downloading this Content, you (the “User”) have accepted, and have agreed to be bound by, the Terms of Use.

Content: This Content is offered by the Province of Ontario’s *Ministry of Northern Development and Mines* (MNDM) as a public service, on an “as-is” basis. Recommendations and statements of opinion expressed in the Content are those of the author or authors and are not to be construed as statement of government policy. You are solely responsible for your use of the Content. You should not rely on the Content for legal advice nor as authoritative in your particular circumstances. Users should verify the accuracy and applicability of any Content before acting on it. MNDM does not guarantee, or make any warranty express or implied, that the Content is current, accurate, complete or reliable. MNDM is not responsible for any damage however caused, which results, directly or indirectly, from your use of the Content. MNDM assumes no legal liability or responsibility for the Content whatsoever.

Links to Other Web Sites: This Content may contain links, to Web sites that are not operated by MNDM. Linked Web sites may not be available in French. MNDM neither endorses nor assumes any responsibility for the safety, accuracy or availability of linked Web sites or the information contained on them. The linked Web sites, their operation and content are the responsibility of the person or entity for which they were created or maintained (the “Owner”). Both your use of a linked Web site, and your right to use or reproduce information or materials from a linked Web site, are subject to the terms of use governing that particular Web site. Any comments or inquiries regarding a linked Web site must be directed to its Owner.

Copyright: Canadian and international intellectual property laws protect the Content. Unless otherwise indicated, copyright is held by the Queen’s Printer for Ontario.

It is recommended that reference to the Content be made in the following form:

Ontario Geological Survey 1983. Assiginack Township, District of Manitoulin, Geological Data Inventory Folio 106; compiled by the staff of the Resident Geologist’s office, Sudbury, 20p., 2 maps.

Use and Reproduction of Content: The Content may be used and reproduced only in accordance with applicable intellectual property laws. *Non-commercial* use of unsubstantial excerpts of the Content is permitted provided that appropriate credit is given and Crown copyright is acknowledged. Any substantial reproduction of the Content or any *commercial* use of all or part of the Content is prohibited without the prior written permission of MNDM. Substantial reproduction includes the reproduction of any illustration or figure, such as, but not limited to graphs, charts and maps. Commercial use includes commercial distribution of the Content, the reproduction of multiple copies of the Content for any purpose whether or not commercial, use of the Content in commercial publications, and the creation of value-added products using the Content.

Contact:

FOR FURTHER INFORMATION ON	PLEASE CONTACT:	BY TELEPHONE:	BY E-MAIL:
The Reproduction of the Content	MNDM Publication Services	Local: (705) 670-5691 Toll-Free: 1-888-415-9845, ext. 5691 (inside Canada, United States)	Pubsales.ndm@ontario.ca
The Purchase of MNDM Publications	MNDM Publication Sales	Local: (705) 670-5691 Toll-Free: 1-888-415-9845, ext. 5691 (inside Canada, United States)	Pubsales.ndm@ontario.ca
Crown Copyright	Queen’s Printer	Local: (416) 326-2678 Toll-Free: 1-800-668-9938 (inside Canada, United States)	Copyright@gov.on.ca



Ministry of
Natural
Resources

Hon. Alan W. Pope
Minister

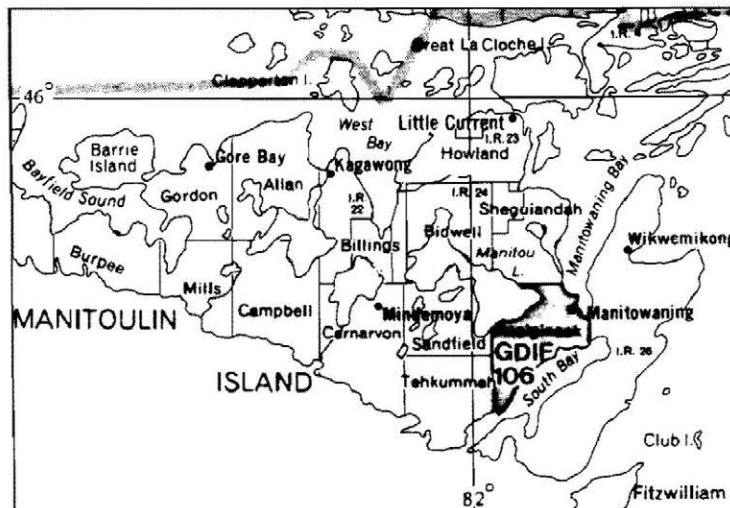
W.T. Foster
Deputy Minister

ONTARIO GEOLOGICAL SURVEY
GEOLOGICAL DATA INVENTORY FOLIO
GDIF 106

ASSIGINACK TOWNSHIP

DISTRICT OF MANITOULIN

Compiled by the Staff of
the Resident Geologist's Office,
Sudbury



LOCATION MAP

Scale 1:1 013 760 or 1 inch to 16 miles

NTS Number 41 H/12, 13

Mining Claim Map Number Nil

This project was funded by the Ontario Ministry of Northern Affairs through the Northern Ontario Geological Survey (NOGS) Program.

STATEMENT: This inventory is unedited. Discrepancies may occur for which the Ontario Geological Survey does not assume liability. Information from this source may be quoted if credit is given. Reference to this inventory should be made as follows:

Ontario Geological Survey

1983: Assignack Township, District of Manitoulin;
Ontario Geological Survey, Geological Data
Inventory Folio 106, compiled by the staff
of the Resident Geologist's Office, Sudbury,
20 p. and 2 maps.

Original Compilation by: Adlington, Richard, Apr.18, 1983

Date	Page Revised	Revised by

Date	Page Revised	Revised by

CONVERSION FACTORS FOR MEASUREMENTS IN ONTARIO GEOLOGICAL SURVEY PUBLICATIONS

If the reader wishes to convert imperial units to SI (metric) units or SI units to imperial units the following multipliers should be used:

CONVERSION FROM SI TO IMPERIAL			CONVERSION FROM IMPERIAL TO SI		
<i>SI Unit</i>	<i>Multiplied by</i>	<i>Gives</i>	<i>Imperial Unit</i>	<i>Multiplied by</i>	<i>Gives</i>
LENGTH					
1 mm	0.039 37	inches	1 inch	25.4	mm
1 cm	0.393 70	inches	1 inch	2.54	cm
1 m	3.280 84	feet	1 foot	0.304 8	m
1 m	0.049 709 7	chains	1 chain	20.116 8	m
1 km	0.621 371	miles (statute)	1 mile (statute)	1.609 344	km
AREA					
1 cm ²	0.155 0	square inches	1 square inch	6.451 6	cm ²
1 m ²	10.763 9	square feet	1 square foot	0.092 903 04	m ²
1 km ²	0.386 10	square miles	1 square mile	2.589 988	km ²
1 ha	2.471 054	acres	1 acre	0.404 685 6	ha
VOLUME					
1 cm ³	0.061 02	cubic inches	1 cubic inch	16.387 064	cm ³
1 m ³	35.314 7	cubic feet	1 cubic foot	0.028 316 85	m ³
1 m ³	1.308 0	cubic yards	1 cubic yard	0.764 555	m ³
CAPACITY					
1 L	1.759 755	pints	1 pint	0.568 261	L
1 L	0.879 877	quarts	1 quart	1.136 522	L
1 L	0.219 969	gallons	1 gallon	4.546 090	L
MASS					
1 g	0.035 273 96	ounces (avdp)	1 ounce (avdp)	28.349 523	g
1 g	0.032 150 75	ounces (troy)	1 ounce (troy)	31.103 476 8	g
1 kg	2.204 62	pounds (avdp)	1 pound (avdp)	0.453 592 37	kg
1 kg	0.001 102 3	tons (short)	1 ton (short)	907.184 74	kg
1 t	1.102 311	tons (short)	1 ton (short)	0.907 184 74	t
1 kg	0.000 984 21	tons (long)	1 ton (long)	1016.046 908 8	kg
1 t	0.984 206 5	tons (long)	1 ton (long)	1.016 046 908 8	t
CONCENTRATION					
1 g/t	0.029 166 6	ounce (troy)/ ton (short)	1 ounce (troy)/ ton (short)	34.285 714 2	g/t
1 g/t	0.583 333 33	pennyweights/ ton (short)	1 pennyweight/ ton (short)	1.714 285 7	g/t

OTHER USEFUL CONVERSION FACTORS

1 ounce (troy)/ton (short)	20.0	pennyweights/ton (short)
1 pennyweight/ton (short)	0.05	ounce (troy)/ton (short)

One gram(g) per tonne is equivalent to one part per million (1 ppm).

NOTE—Conversion factors which are in bold type are exact. The conversion factors have been taken from or have been derived from factors given in the Metric Practice Guide for the Canadian Mining and Metallurgical Industries published by The Mining Association of Canada in cooperation with the Coal Association of Canada.

TABLE OF CONTENTS

Data Sources Checklist	1
Metals and Minerals Reference List	2
Mineral Occurrences	3
Type of Work	4
Drill Hole Summary	6
Airborne Geophysical Survey Data	8
Geochemical Survey Data	9
Miscellaneous Data	10
Newspaper Clipping File	11
ODM General Index Search	12
Selected References	16
Notes and Addenda	20

ACCOMPANYING MAPS

Property Location Map - 1 map

Exploration Data Map - 1 map

Map Scale 1: 31 680 or 1 inch to ½ mile

DATA SOURCES CHECK LIST

NOTE: The following sources have been searched to compile the data for this area. If no reference data was found the appropriate box is marked 'no'; if reference data was found, the box is marked 'yes'.

All reference data found are included in the following pages. If the box is blank, the data source has not yet been searched. If the box is marked N.A., the source item is Not Applicable to this area and therefore not searched.

SOURCES OF DATA		Data	Initial
1	Resident Geologist's Office Files	Yes	R.A.
2	Assessment Files Research Office, Toronto	N.A.	R.A.
3	ODM General Index; 7 volumes	Yes	R.A.
4	Catalogue of Airborne Geophysical Surveys (ODM)	No	R.A.
5	ODM Mineral Resources Circulars and OGS Mineral Deposits Circulars	No	R.A.
6	ODM Industrial Mineral Reports	Yes	R.A.
7	Bibliography of Post Precambrian Theses - Karow (ODM MP 1)	Yes	R.A.
8	Bibliography of Precambrian Theses - Ginn (ODM MP 2)	No	R.A.
9	Newspaper Clippings File	No	R.A.
10	GSC Index to Publications	Yes	R.A.
11	OGS Index to Published Maps and Reports - MP 77 and Supplements to MP 77	Yes	R.A.
12	OGS Index Maps	Yes	R.A.
13	Source Mineral Deposit Records (O.G.S.)	No	R.A.
14	Author - Subject Articles File	Yes	R.A.
15	Miscellaneous Papers: ODM & OGS	Yes	R.A.
16	ODM Geological Circulars: OGS Study Series	Yes	R.A.
17	ODM Preliminary Reports: ODM Bulletins	No	R.A.
18	ODM - OGS Open File Reports	Yes	R.A.
19	OGS Northern Ontario Engineering Geology Terrain Studies	No	R.A.
20	OGS Aggregate Resources Inventory Papers	No	R.A.
21	OGS Mineral Potential Maps	Yes	R.A.
22	Theses on File, Sudbury	Yes	R.A.
23	Aerial Photographs on File, Sudbury	No	R.A.

METALS AND MINERALS REFERENCES LIST

Δ anh.Anhydrite	Δ fu.Fuchsite	Δ Ni.Nickel	Δ st.Stone
Δ ank.Ankerite	Δ gn.Galena	Δ Nb.Niobium	Δ talc.Talc
Δ anna.Annabergite	Δ gt.Garnet	Δ Pd.Palladium	Δ Te.Tellurium
Δ ap.Apatite	Δ goe.Goethite	Δ peat.Peat	Δ td.Tetrahedrite
Δ arg.Argentite	Δ Au.Gold	Δ pent.Pentlandite	Δ th.Thorite
Δ As.Arsenic	Δ gf.Graphite	Δ Pt.Platinum	Δ Th.Thorium
Δ asp.Arsenopyrite	Δ gl.Gravel	Δ py.Pyrite	Δ thuc.Thucholite
Δ asb.Asbestos	Δ gyp.Gypsum	Δ pyl.Pyrochlore	Δ ti.Titanite
Δ ba.Barite	Δ hem.Hematite	Δ pyrl.Pyrolusite	Δ Ti.Titanium
Δ be.Beryl	Δ il.Ilmenite	Δ po.Pyrrhotite	Δ tour.Tourmaline
Δ Bi.Bismuth	Δ Fe.Iron	Δ q.Quartz	Δ trap.Trap rock
Δ bn.Bornite	Δ IF.Iron Formation	Δ qcv.Quartz carbonate vein	Δ W.Tungsten
Δ bran.Brannerite	Δ jas.Jasper	Δ ra.Radioactive minerals	Δ uran.Uraninite
Δ bruc.Bruceite	Δ kaol.Kaolinite (kaolin)	Δ RE.Rare Earths	Δ U.Uranium
Δ Cd.Cadmium	Δ ky.Kyanite	Δ sd.Sand	Δ verm.Vermiculite
Δ calc.Calcite	Δ Pb.Lead	Δ sgl.Sand and gravel	Δ Y.Yttrium
Δ carb.Carbonate	Δ lim.Limonite	Δ ss.Sandstone	Δ Zn.Zinc
Δ cel.Celestite	Δ Li.Lithium	Δ scap.Scapolite	Δ zr.Zircon
Δ cc.Chalcocite	Δ mgst.Magnesite	Δ shee.Scheelite	
Δ ep.Chalcopyrite	Δ mag.Magnetite	Δ serp.Serpentine	
Δ ch.Chert	Δ mc.Malachite	Δ sh.Shale	
Δ clay.Clay	Δ Mn.Manganese	Δ sid.Siderite	
Δ Co.Cobalt	Δ mb.Marble	Δ si.Silica	
Δ cob.Cobaltite	Δ mar.Marcasite	Δ Ag.Silver	
Δ cb.Columbite	Δ ma.Marl	Δ sl.Slate	
Δ Cu.Copper	Δ mi.Mica	Δ sm.Smalite	
Δ cor.Corundum	Δ ml.Millerite	Δ sod.Sodalite	
Δ dol.Dolomite	Δ mo.Molybdenite	Δ spec.Specularite	
Δ ep.Epidote	Δ Mo.Molybdenum	Δ sp.Sphalerite	
Δ ery.Erythrite	Δ mon.Monazite	Δ spd.Spodumene	
Δ fel.Feldspar	Δ ne.Nephele (nepheline)	Δ staur.Stauriolite	
Δ fl.Fluorite (fluorspar)	Δ nc.Niccolite	Δ stib.Stibnite	

Solid triangles indicate metal and mineral occurrences shown on the accompanying maps.

MINERAL OCCURRENCES		Source Mineral Deposit Record	References in OGS Mineral Deposits Circulars & OGS Industrial Mineral Reports	Additional References and/or Remarks

Numbers below represent the year in which the work was done; e.g., 68 for 1968.

TYPE OF WORK		GEOLOGICAL	GEOCHEMICAL	TRENCHING, STRIPPING	DRILLING	ASSAY DATA	UNDERGROUND WORK	PROSPECTUS, NOTES, CORRESPONDENCE	AIRBORNE MAGNETOMETER	AIRBORNE ELECTROMAGNETIC	AIRBORNE RADIOMETRIC	GROUND MAGNETOMETER	GROUND ELECTROMAGNETIC	GROUND RADIOMETRIC	INDUCED POLARIZATION	SELF POTENTIAL	RESISTIVITY	GRAVEL PITS	PHYSICAL PROPERTIES TESTS
1	EXPLORATION DATA filed at the RESIDENT GEOLOGIST'S OFFICE SUDBURY				48														
2	COMPANY/AUTHOR (file number)				07														
3	Ashland Oil & Refining Co. Ltd.				50														
4	Benedum-Trees Oil Co. Ltd.				42 43														
5	Elk Oils Ltd.				?														
6	Ethridge Olson Oil & Development Co. Ltd.				58														
7	Gordon, H. C.				39														
8	Imperial Oil Co. Ltd.				42 43														
9	Island Oils Ltd.				50														
10	Ivy Drilling Co. Ltd.				07														
11	Kemp, L.				1866														
12	Lot 45, Con.2				29														
13	Manitoulin Oil Co. Ltd.				28														
	Manitoulin Oil & Gas Co. Ltd.																		
	Manitowaning Oil Co. Ltd.																		

Numbers below represent the year in which the work was done; e.g., 68 for 1968.

TYPE OF WORK	Numbers below represent the year in which the work was done; e.g., 68 for 1968.																	
	GEOLOGICAL	GEOCHEMICAL	TRENCHING, STRIPPING	DRILLING	ASSAY DATA	UNDERGROUND WORK	PROSPECTUS, NOTES, CORRESPONDENCE	AIRBORNE MAGNETOMETER	AIRBORNE ELECTROMAGNETIC	AIRBORNE RADIOMETRIC	GROUND MAGNETOMETER	GROUND ELECTROMAGNETIC	GROUND RADIOMETRIC	INDUCED POLARIZATION	SELF POTENTIAL	RESISTIVITY	GRAVEL PIT	PHYSICAL PROPERTIES TESTS
14				41														
15																83		
16				78 79													81	
17				38														
18				67														
19				?														

GDIF FORM NO. 2

DRILLHOLE SUMMARY		Company Name	Company Drillhole Number	Date Drilled	Bearing Azimuth Degrees	Initial Dip of Hole Degrees	Thickness of Overburden Feet	Total Length of Hole Feet	Mineralization Noted in Log	Assay Data Included for
Map Drilling Location Number	Map Drilling Location Number									
1		Ashland Oil & Refining Co. (George Shaw)	1	1948	-	90	5	719	Oil show	-
2		(Jess Lehman)	2	1948	-	90	0	471	Gas show	-
3		Benedum-Trees Oil Co. (Lehman)	3	1907	-	90	14	477	Oil	45 Bb1
4		(James A. Watson)	-	1907	-	90	0	566	-	-
5		Elk Oils (W. McCarley)	1	1950	-	90	20	650	Gas show	-
6		Ethridge Olson Oil & Development Co.								
7		(G. McIvor)	2	1942	-	90	?	907	?	-
8		(J. Lehman)	3	1943	-	90	?	891	?	-
9		(L. Lehman)	1	1943?	-	90	0	917	-	-
10		Gordon, H. C. Imperial Oil Co. (W. J. Tillson No.1)	1 667	?	-	90	5	550	-	-
11		Island Oils Ltd. (J. Marshal)	4	1958	-	90	0	1125	-	-
12		Ivy Drilling Co. (J. Marshal)	10	1939	-	90	6	495	Oil	5 Bb1
13		Kemp, L. (J. Marshal)		1942,43	-	90	14	705	Oil & gas show	-
14		Lot 45, Con.2 Manitoulin Oil Co.	1	1950	-	90	10	467	Oil	0.5 Bb1
15		Manitoulin Oil Co.	-	1907	-	90	6	566	-	-
15a		Manitoulin Oil Co.	1	1866	-	90	?	524	Oil, gas	-
16		Manitoulin Oil & Gas Co.	2	1866	-	90	10	466	Oil, gas	-
17		Manitowaning Oil Co. (J. Marshal)	1	1929	-	90	?	450	-	-
18		Morris & Vigors (John Hembruff)	-	1928	-	90	10	467	-	-
19		Ont. Geological Survey	1	1941	-	90	15	475	Gas show	-
20		Ont. Geological Survey	78-08	1978	-	90	0	151	-	-
21		Ont. Geological Survey	78-09	1978	-	90	0	152	-	-
		Ont. Geological Survey	79-14	1979	-	90	0	49	-	-

DRILLHOLE SUMMARY		Company Name	Company Drillhole Number	Date Drilled	Bearing Azimuth Degrees	Initial Dip of Hole Degrees	Thickness of Overburden Feet	Total Length of Hole Feet	Mineralization Noted in Log	Assay Data Included for
Map Drilling Location Number										
22		Sault Ste. Marie Syndicate (Jas. Marshal)	1	1938	-	90	14	487	Oil	-
23		(Marshal)	2	1938	-	90	26	490	Oil show	-
23a		(Jas. Marshal)	3	1938	-	90	8	485	Oil & gas	1000 Bbl
24		Tulgestke, I. (Thomas Wright)	1	1967	-	90	42	828	Gas show	-
25		Wallace, G.	1	?	-	90	?	570	-	-
26		Unknown	No Data	- Location from unpublished		"	0.G.S. Petroleum Resources Map	"	"	
27		Unknown	No Data	"	"	"	"	"	"	
28		Unknown	No Data	"	"	"	"	"	"	
29-43		Unknown	No Data	"	"	"	"	"	"	

AIRBORNE GEOPHYSICAL SURVEY DATA

No.	By For	Type of Survey	Flight Altitude	Flight Line Direction	Flight Line Spacing

GEOCHEMICAL SURVEY DATA	Type of Survey	Analysis For	By	Reference
Map Sample Site Reference Number				

MISCELLANEOUS DATA

AGE DATING

Site	Method	Material	Reference	Result

Large empty rectangular area for additional data or notes.

NEWSPAPER CLIPPINGS FILE

NOTE: A file of newspaper clippings about the companies listed below, who have worked in this area, is maintained in the Regional/Resident Geologist's Office.

SUDBURY

No clippings on file, April 18, 1983

ODM GENERAL INDEX SEARCH

Words searched:

ASSIGINACK TP.
MANITOULIN ISLAND

Index Volume	Listing:	Report Volume	Part	Page
3	ASSIGINACK TP., Manitoulin Oil wells (1938)	48	5	64
	(1939)	49	5	74
	logs (1930	40	5	48
	(1938)	48	5	52
	(1939)	49	5	59
4	ASSIGINACK TP., Manitoulin Oil production (1941)	51	5	84
	wells (1940)	50	5	68
	(1941)	51	5	84
	(1942)	52	5	70
	(1943)	53	5	64
	(1944)	54	3	76
	logs	51	5	64
		53	5	51
		58	3	63,64
5	ASSIGINACK TP., Manitoulin dist. Oil wells (1951)	61	3	28
	(1952)	62	3	24
	(1953)	63	3	35
	logs (1950)	60	3	66
	production (1950)	60	3	28

ODM GENERAL INDEX SEARCH

Words searched:

Index Volume	Listing:	Report Volume	Part	Page
1	MANITOULIN ISLAND, L. Huron			
	Agricultural land	4		103
	Bays, how formed	R.C.		48
	Building stone. See below Rocks			
	Gas	1		140
	well records	24	2	29
	Iron, boring for	13	1	43,45
	Oil	R.C.		156,157
		1		140
		9		206
		14	1	89,97
	Rocks	R.C.		41-44
	limestone	R.C.		41-44, 84
		13	2	74,76
	analysis	1		86
	Cambro-Silurian	13	2	24
		24	2	4
	for building	1		93
	lime	1		94
	notes by Miller	13	2	75
	quarrying	1		101
		R.C.		74,78
	Trenton	1		140
quartzite	1		72	
for glass making	1		94	
shale, bituminous	24	1	19	
Salt in oil wells	R.C.		164	
2	MANITOULIN ISLAND, L. Huron			
	Fossils	32	7	92,93
	See also Gore Bay			
	Gorrel pt.			
	Limestone for flux	N.C.		A29
	Oil, boring for	31	5	74
	in Trenton	32	5	87
		35	5	58,59
	Upper Ordovician classification			
	and correlation	29	5	47
5	MANITOULIN DISTRICT			
	Oil wells (1950)	60	3	28
	(1951)	61	3	28
	(1952)	62	3	24
	(1953)	63	3	35
	logs of	60	3	66
	Water well records (1947)	60	11	83

ODM GENERAL INDEX SEARCH

Words searched:

Index Volume	Listing:	Report Volume	Part	Page
6	MANITOULIN ISLAND, L. Huron Quartzite quarry	24 25	1 1	68 69
7	MANITOULIN ISLAND, L. Huron Quartzite quarry See also Killarney twp.	70		142

ODM GENERAL INDEX SEARCH

Words searched:

Index Volume	Listing:	Report Volume	Part	Page

SELECTED REFERENCES		Date	Author	Reference		Map Scales and/or Report Pages
				Title		
	Ayres, L. D., et al	1970	REGIONAL GEOLOGICAL COMPILATION MAPS Ontario Geological Map, Southern Sheet GEOPHYSICAL MAPS	O.D.M. Map 2197	1"=16 miles	
	O.D.M.-G.S.C.	1965	Aeromagnetic Maps Little Current Manitowaning Manitoulin Island	2270G 2269G 7060	1"=1 mile 1"=1 mile 1"=4 miles	
	Dept. of Energy, Surveys & Mapping Branch	1975	SURFICIAL, PLEISTOCENE, TERRAIN ENGINEERING Topographic Map, Little Current Manitowaning		1:50,000 1:50,000	
	Bell, R.	1866	GEOCHEMICAL No Data Available, Apr. 18, 1983	G.S.C. Rept. Prog.	pp.165-179	
	Caley, J. F.	1869	GEOLOGICAL REPORTS AND MAPS Report on the Manitoulin Islands Report on the Geology of the Grand Manitoulin, Cockburn, Drummond and St. Josephs Islands (map 1870)	G.S.C. Rep't Prog.	pp.109-116	
		1936	The Ordovician of Manitoulin Island, Ontario	Mem.G.S.C., 202 (2)	pp.21-91	

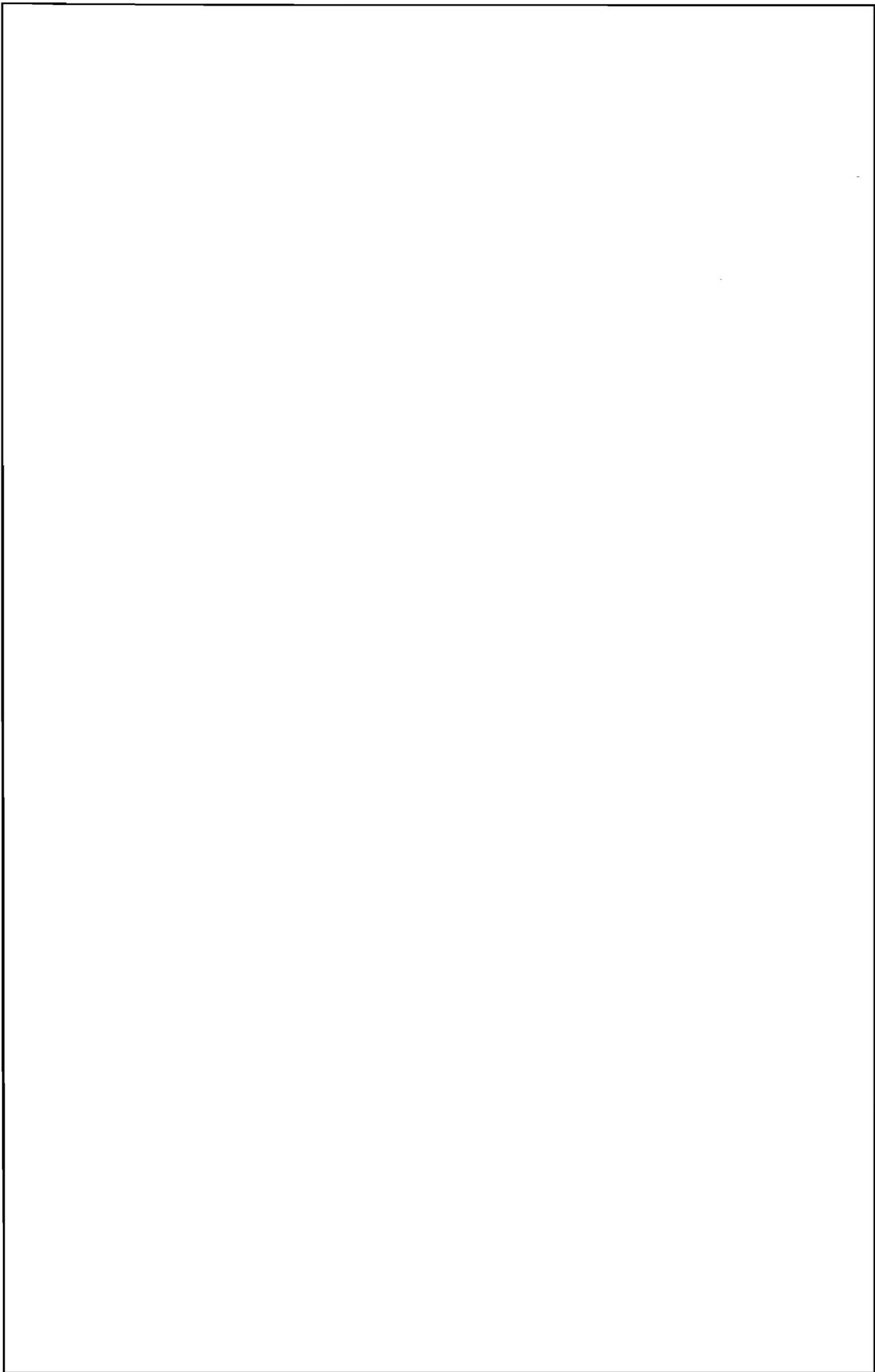
		SELECTED REFERENCES		Reference	Map Scales and/or Report Pages
Card, K. D.	1978	Geology of the Sudbury-Manitowlin Area, Districts of Sudbury and Manitowlin Map	GRI66 2360	238pp. 1"=2 miles	
G.S.C.	1957	Manitowlin Island, Ontario	Can. Dep. Mines & Tech. Surv. Map 20-1957		
Hewitt, D. F.	1960	The Limestone Industries of Ontario	IMR5		
	1964	The Limestone Industries of Ontario, 1958-1963	IMR13		
	1964	Building Stones of Ontario - Part 1. Introduction.	IMR14		
	1964	Building Stones of Ontario - Part 2. Limestone.	IMR15		
Hewitt, D. F., Vos, M. A.	1972	The Limestone Industries of Ontario	IMR39		
Johnson, M. D.	1983	Geochemical Data: Manitowlin Island Limestone-Dolostone Assessment Project	OFR5383	98pp.	
Johnson, M. D. & Telford, P. G.	1981	Preliminary Results of 1978-79 Drilling Programme Manitowlin Island Limestone-Dolostone Assessment Project	OFR5360	76pp.	
	1981	Preliminary Results of 1980 Drilling Programme, Manitowlin Island Limestone-Dolostone Assessment Project	OFR5364	44pp.	
Liberty, B. A. et al	1972	Manitowaning (geology 1954-1957)	O.D.M. Map 2249	1"=1 mile	

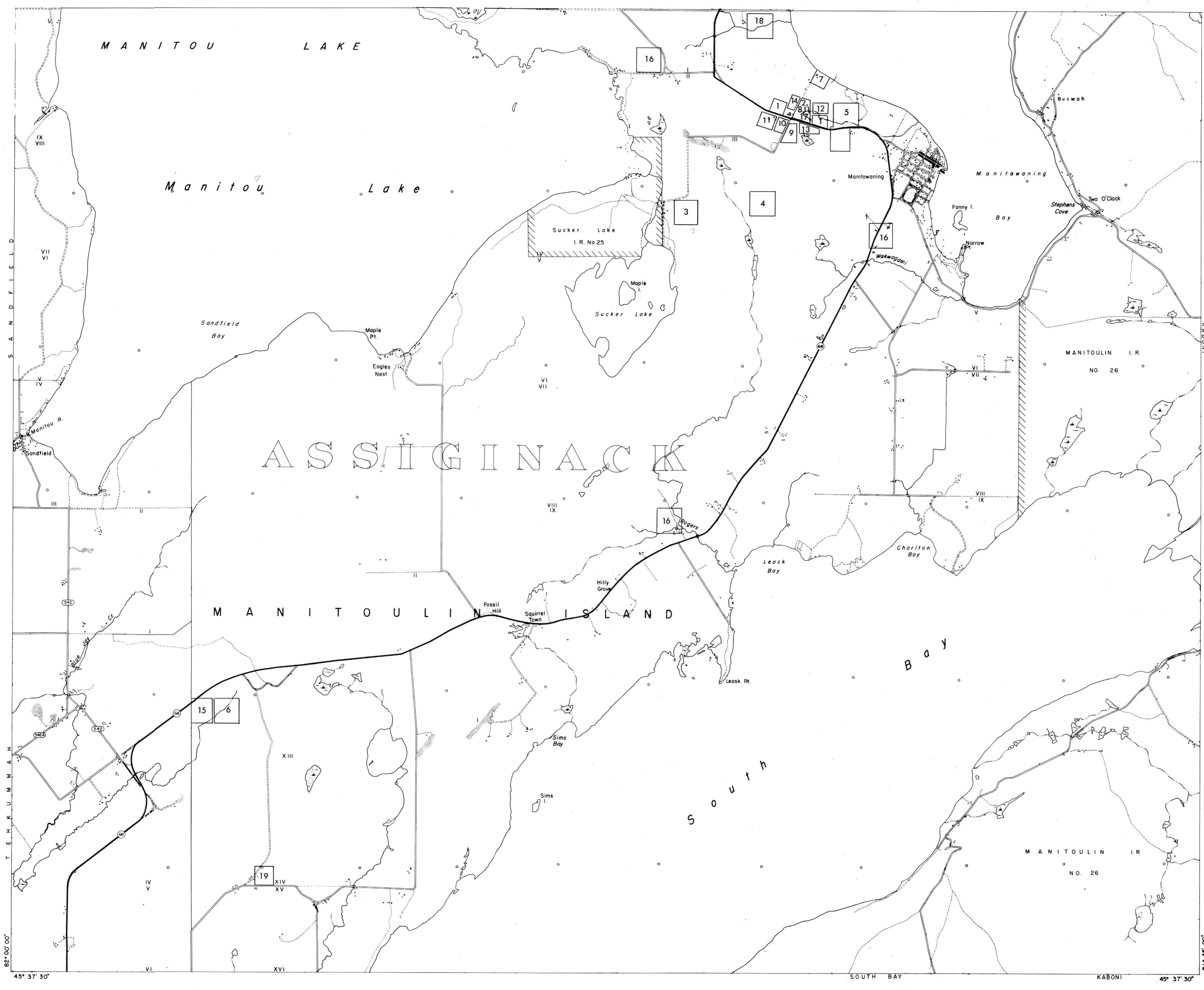
SELECTED REFERENCES			Reference	Map Scales and/or Report Pages
Author	Date	Title		
O.G.S. & Mineral Resources Branch	1982	Mineral Potential Map of Ontario, Southern Sheet Magnetic Compilation Map Geological Compilation Map 2197	OFR5328	1"=16 miles 1"=16 miles 1"=16 miles
Russell, D. J. Johnson, M. D.	1981	Limestone-Dolostone Assessment Project, Aggregate Test Results for Silurian Carbonate Rocks of Manitoulin Island	OFR5370	21pp.
Williams, M. Y.	1919	Silurian Geology and Faunas of Ontario Peninsula and Manitoulin and Adjacent Islands.	Mem. G.S.C., 111	195pp.
	1937	Manitoulin Island	Can. Dept. Mines & Resources	1"=4 miles
Copper, P.	1971	JOURNAL ARTICLES, THESES, TECHNICAL REPORTS Geology of Manitoulin and Adjacent Islands. Field Trip No.8	G.A.C.-Mineral. Assoc. Can.	37pp.
Foerste, A. F.	1912	The Ordovician Section in the Manitoulin Area of Lake Huron	Ohio Naturalist	
Horst, R. E.	1978	Paleoecology and Stratigraphy of Upper Ordovician (Ashgillian) Biostromes of Manitoulin Island, Ontario. M.Sc. Laurent.	Sudbury File	
Johnson, M. D.	1981	Correlation of Lower Silurian Strata from the Michigan Upper Peninsula to Manitoulin Island	Can. J. Earth Sci. Vol.18	pp.869-883
Liberty, B. A.	1954	Ordovician of Manitoulin Island	Mich.Geol. Soc. Guidebook	pp.7-13
	1968	Ordovician and Silurian Stratigraphy of Manitoulin Island	Mich. Basin Geol. Soc. Ann. Field Trip	pp.35-77


SELECTED REFERENCES		Date	Reference	Map Scales and/or Report Pages
		Author	Title	
Whittaker, P. J.	1978	The Canadian Caver Vol. 2	pp. 10-12	
Skeleton Cave (Manitoulin Island)				

NOTES AND ADDENDA

Some drill holes are plotted for which no other data are available.



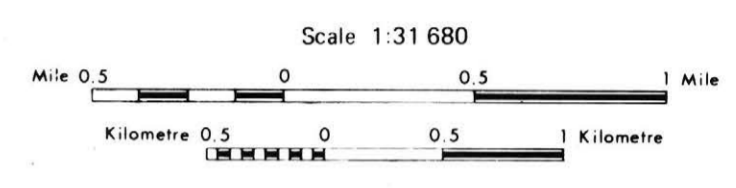


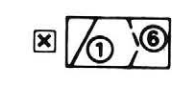
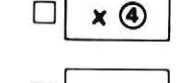
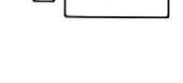

 Ministry of Natural Resources
 Ontario

Hon. Alan W. Pope
 Minister
 W. T. Foster
 Deputy Minister

ONTARIO GEOLOGICAL SURVEY
PROPERTY LOCATION MAP
 (Map 1 of 2)
 to accompany GEOLOGICAL DATA
 INVENTORY FOLIO 106
ASSIGINACK TOWNSHIP

DISTRICT OF MANITOULIN



- EXPLORATION DATA FILE AREAS**
-  Reference number is always inside work area outlined. See listing in text pages.
 -  Small area of exploration data.
 - 

82° 00' 00" 45° 37' 30" SOUTH BAY KABONI 45° 37' 30" 81° 45' 00"

