

THESE TERMS GOVERN YOUR USE OF THIS DOCUMENT

Your use of this Ontario Geological Survey document (the “Content”) is governed by the terms set out on this page (“Terms of Use”). By downloading this Content, you (the “User”) have accepted, and have agreed to be bound by, the Terms of Use.

Content: This Content is offered by the Province of Ontario’s *Ministry of Northern Development and Mines* (MNDM) as a public service, on an “as-is” basis. Recommendations and statements of opinion expressed in the Content are those of the author or authors and are not to be construed as statement of government policy. You are solely responsible for your use of the Content. You should not rely on the Content for legal advice nor as authoritative in your particular circumstances. Users should verify the accuracy and applicability of any Content before acting on it. MNDM does not guarantee, or make any warranty express or implied, that the Content is current, accurate, complete or reliable. MNDM is not responsible for any damage however caused, which results, directly or indirectly, from your use of the Content. MNDM assumes no legal liability or responsibility for the Content whatsoever.

Links to Other Web Sites: This Content may contain links, to Web sites that are not operated by MNDM. Linked Web sites may not be available in French. MNDM neither endorses nor assumes any responsibility for the safety, accuracy or availability of linked Web sites or the information contained on them. The linked Web sites, their operation and content are the responsibility of the person or entity for which they were created or maintained (the “Owner”). Both your use of a linked Web site, and your right to use or reproduce information or materials from a linked Web site, are subject to the terms of use governing that particular Web site. Any comments or inquiries regarding a linked Web site must be directed to its Owner.

Copyright: Canadian and international intellectual property laws protect the Content. Unless otherwise indicated, copyright is held by the Queen’s Printer for Ontario.

It is recommended that reference to the Content be made in the following form:

Ontario Geological Survey 1984. Faraday Township, Hastings County, Geological Data Inventory Folio 125; compiled by the staff of the Resident Geologist’s office, Bancroft, 72p., 3 maps.

Use and Reproduction of Content: The Content may be used and reproduced only in accordance with applicable intellectual property laws. *Non-commercial* use of unsubstantial excerpts of the Content is permitted provided that appropriate credit is given and Crown copyright is acknowledged. Any substantial reproduction of the Content or any *commercial* use of all or part of the Content is prohibited without the prior written permission of MNDM. Substantial reproduction includes the reproduction of any illustration or figure, such as, but not limited to graphs, charts and maps. Commercial use includes commercial distribution of the Content, the reproduction of multiple copies of the Content for any purpose whether or not commercial, use of the Content in commercial publications, and the creation of value-added products using the Content.

Contact:

FOR FURTHER INFORMATION ON	PLEASE CONTACT:	BY TELEPHONE:	BY E-MAIL:
The Reproduction of the EIP or Content	MNDM Publication Services	Local: (705) 670-5691 Toll Free: 1-888-415-9845, ext. 5691 (inside Canada, United States)	Pubsales.ndm@ontario.ca
The Purchase of MNDM Publications	MNDM Publication Sales	Local: (705) 670-5691 Toll Free: 1-888-415-9845, ext. 5691 (inside Canada, United States)	Pubsales.ndm@ontario.ca
Crown Copyright	Queen’s Printer	Local: (416) 326-2678 Toll Free: 1-800-668-9938 (inside Canada, United States)	Copyright@gov.on.ca



Ministry of
Natural
Resources

Hon. Alan W. Pope
Minister

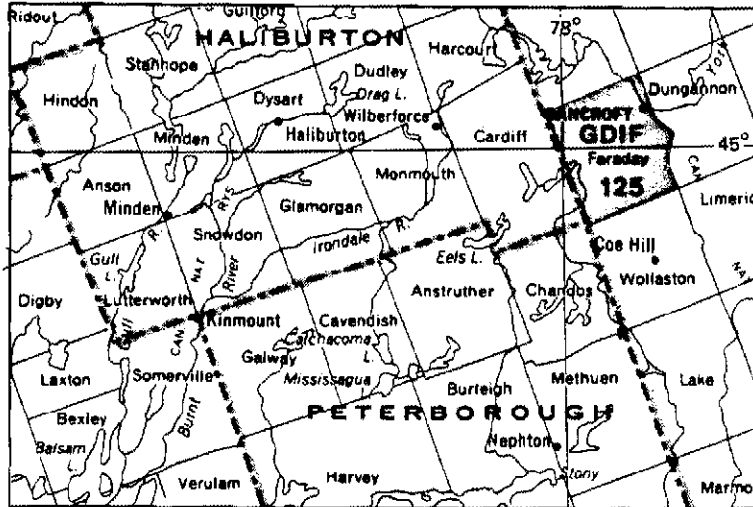
John R. Sloan
Deputy Minister

ONTARIO GEOLOGICAL SURVEY
GEOLOGICAL DATA INVENTORY FOLIO
GDIF 125

FARADAY TOWNSHIP

HASTINGS COUNTY

Compiled by the Staff of
the Resident Geologist's Office,
Bancroft



LOCATION MAP

Scale 1:1 013 760 or 1 inch to 16 miles

NTS Number 31C/13, 31F/4, 31E/1

Mining Claim Map Number M.90

This inventory was aided by the Mining Sector Work Program, Bancroft.

STATEMENT: This inventory is unedited. Discrepancies may occur for which the Ontario Geological Survey does not assume liability. Information from this source may be quoted if credit is given. Reference to this inventory should be made as follows:

Ontario Geological Survey
1984: Faraday Township, Hastings County; Ontario Geological Survey, Geological Data Inventory Folio 125, compiled by the staff of the Resident Geologist's Office, Bancroft, 72 p. and 3 maps.

Original Compilation by: Karen Fell, Pat Flagler, Peggy Hogarth, John Pollak, September 1983.

Date	Page Revised	Revised by	Date	Page Revised	Revised by

TABLE OF CONTENTS

Data Sources Checklist	1
Metals and Minerals Reference List	2
Mineral Occurrences	3
Type of Work	20
Drill Hole Summary	31
Airborne Geophysical Survey Data	38
Geochemical Survey Data	39
Miscellaneous Data	40
Newspaper Clipping File	41
ODM General Index Search	43
Selected References	46
Notes and Addenda	72

ACCOMPANYING MAPS

Property Location Map - 2 maps

Exploration Data Map - 1 map

Map Scale 1: 31 680 or 1 inch to ½ mile

CONVERSION FACTORS FOR MEASUREMENTS IN ONTARIO GEOLOGICAL SURVEY PUBLICATIONS

If the reader wishes to convert imperial units to SI (metric) units or SI units to imperial units the following multipliers should be used:

CONVERSION FROM SI TO IMPERIAL			CONVERSION FROM IMPERIAL TO SI		
<i>SI Unit</i>	<i>Multiplied by</i>	<i>Gives</i>	<i>Imperial Unit</i>	<i>Multiplied by</i>	<i>Gives</i>
LENGTH					
1 mm	0.039 37	inches	1 inch	25.4	mm
1 cm	0.393 70	inches	1 inch	2.54	cm
1 m	3.280 84	feet	1 foot	0.304 8	m
1 m	0.049 709 7	chains	1 chain	20.116 8	m
1 km	0.621 371	miles (statute)	1 mile (statute)	1.609 344	km
AREA					
1 cm ²	0.155 0	square inches	1 square inch	6.451 6	cm ²
1 m ²	10.763 9	square feet	1 square foot	0.092 903 04	m ²
1 km ²	0.386 10	square miles	1 square mile	2.589 988	km ²
1 ha	2.471 054	acres	1 acre	0.404 686 6	ha
VOLUME					
1 cm ³	0.061 02	cubic inches	1 cubic inch	16.387 064	cm ³
1 m ³	35.314 7	cubic feet	1 cubic foot	0.028 316 85	m ³
1 m ³	1.308 0	cubic yards	1 cubic yard	0.764 555	m ³
CAPACITY					
1 L	1.759 755	pints	1 pint	0.568 261	L
1 L	0.879 877	quarts	1 quart	1.136 522	L
1 L	0.219 969	gallons	1 gallon	4.546 090	L
MASS					
1 g	0.035 273 96	ounces (avdp)	1 ounce (avdp)	28.349 523	g
1 g	0.032 150 75	ounces (troy)	1 ounce (troy)	31.103 476 8	g
1 kg	2.204 62	pounds (avdp)	1 pound (avdp)	0.453 592 37	kg
1 kg	0.001 102 3	tons (short)	1 ton (short)	907.184 74	kg
1 t	1.102 311	tons (short)	1 ton (short)	0.907 184 74	t
1 kg	0.000 984 21	tons (long)	1 ton (long)	1016.046 908 8	kg
1 t	0.984 206 5	tons (long)	1 ton (long)	1.016 046 908 8	t
CONCENTRATION					
1 g/t	0.029 166 6	ounce (troy)/ ton (short)	1 ounce (troy)/ ton (short)	34.285 714 2	g/t
1 g/t	0.583 333 33	pennyweights/ ton (short)	1 pennyweight/ ton (short)	1.714 285 7	g/t

OTHER USEFUL CONVERSION FACTORS

1 ounce (troy)/ton (short)	20.0	pennyweights/ton (short)
1 pennyweight/ton (short)	0.05	ounce (troy)/ton (short)

One gram (g) per tonne is equivalent to one part per million (1 ppm).

NOTE—Conversion factors which are in bold type are exact. The conversion factors have been taken from or have been derived from factors given in the Metric Practice Guide for the Canadian Mining and Metallurgical Industries published by The Mining Association of Canada in cooperation with the Coal Association of Canada.

DATA SOURCES CHECK LIST

NOTE: The following sources have been searched to compile the data for this map. If no reference data was found, the appropriate box is marked 'no'; if reference was found, the box is marked 'yes'.

All reference data found are included in the following pages. If the box is blank, the data source has not yet been searched. If the box is marked N.A., the source item is Not Applicable to this area and therefore not searched.

SOURCES OF DATA		Data	Initial
1	Resident Geologist's Office Files	Yes	P.H.
2	Assessment Files Research Office, Toronto		
3	ODM General Index; 7 volumes	Yes	K.F.
4	Catalogue of Airborne Geophysical Surveys (ODM)		
5	ODM Mineral Resources Circulars and OGS Mineral Deposits Circulars	Yes	K.F.
6	ODM Industrial Mineral Reports	Yes	K.F.
7	Bibliography of Post Precambrian Theses - Karrow (ODM MP 1)	No	K.F.
8	Bibliography of Precambrian Theses - Ginn (ODM MP 2)	Yes	K.F.
9	Newspaper Clippings File	Yes	K.F.
10	GSC Index to Publications	Yes	K.F.
11	OGS Index to Published Maps and Reports - MP 77 and Supplements to MP 77	Yes	K.F.
12	OGS Index Maps	Yes	K.F.
13	Source Mineral Deposit Records (O.G.S.) & M.D.I.R.'s (O.G.S.)	Yes	K.F.
14	Author - Subject Articles File		
15	Miscellaneous Papers: ODM & OGS	Yes	K.F.
16	ODM Geological Circulars: OGS Study Series	Yes	K.F.
17	ODM Preliminary Reports: ODM Bulletins	Yes	K.F.
18	ODM - OGS Open File Reports	Yes	K.F.
19	OGS Northern Ontario Engineering Geology Terrain Studies	Yes	K.F.
20	OGS Aggregate Resources Inventory Papers	No	K.F.
21	OGS Mineral Potential Maps	Yes	K.F.
22	OGS Guidebook Series	Yes	K.F.
23	OGS Mineral Policy Background Papers	No	K.F.
24	OGS Occasional Papers	No	K.F.
25	ODM Papers	No	K.F.
26	OGS/OMNR Annual Statistical Reports	Yes	K.F.
27	OGS Industrial Mineral Background Papers (1-3)	No	K.F.
28	OGS Geophysical Reports	N.A.	K.F.
29	Canada Department of Mines, Mines Branch Publications	Yes	K.F.

METALS AND MINERALS REFERENCES LIST

△ anh.Anhydrite	△ fu.Fuchsite	△ Ni.Nickel	△ st.Stone
△ ank.Ankerite	△ gn.Galena	▲ Nb.Niobium	▲ talc.Talc
△ anna.Annabergite	△ gt.Garnet	△ Pd.Palladium	△ Te.Tellurium
▲ ap.Apatite	△ goe.Goethite	△ peat.Peat	△ td.Tetrahedrite
△ arg.Argentite	▲ Au.Gold	△ pent.Pentlandite	△ th.Thorite
△ As.Arsenic	▲ gf.Graphite	△ Pt.Platinum	▲ Th.Thorium
▲ asp.Arsenopyrite	△ gl.Gravel	△ py.Pyrite	△ thuc.Thucholite
△ asb.Asbestos	△ gyp.Gypsum	△ pyl.Pyrochlore	△ ti.Titanite
△ ba.Barite	△ hem.Hematite	△ pyrl.Pyrolusite	△ Ti.Titanium
△ be.Beryl	▲ il.Ilmenite	△ po.Pyrrhotite	△ tour.Tourmaline
△ Bi.Bismuth	▲ Fe.Iron	△ q.Quartz	△ trap.Trap rock
△ bn.Bornite	△ IF.Iron Formation	△ qcv.Quartz carbonate vein	△ W.Tungsten
△ bran.Brannerite	△ jas.Jasper	▲ ra.Radioactive minerals	△ uran.Uraninite
△ bruc.Bruceite	△ kaol.Kaolinite (kaolin)	▲ RE.Rare Earths	▲ U.Uranium
△ Cd.Cadmium	△ ky.Kyanite	△ sd.Sand	△ verm.Vermiculite
▲ calc.Calcite	△ Pb.Lead	△ sgl.Sand and gravel	▲ Y.Yttrium
△ carb.Carbonate	△ lim.Limonite	△ ss.Sandstone	▲ Zn.Zinc
△ cel.Celestine	△ Li.Lithium	▲ scap.Scapolite	△ zr.Zircon
△ cc.Chalcocite	△ mgst.Magnesite	△ shee*Scheelite	▲ per.Peristerite
△ cp.Chalcopyrite	▲ mag.Magnetite	△ serp.Serpentine	▲ cnn.Cancrinite
△ ch.Chert	△ mc.Malachite	△ sh.Shale	▲ amyth.Amethyst
△ clay.Clay	△ Mn.Manganese	△ sid.Siderite	▲ trem.Tremolite
△ Co.Cobalt	▲ mb.Marble	△ si.Silica	▲ gnes.Gneiss
△ cob.Cobaltite	△ mar.Marcasite	▲ Ag.Silver	▲ diop.Diopside
△ cb.Columbite	△ ma.Marl	△ sl.Slate		
△ Cu.Copper	▲ mi.Mica	△ sm.Smaltite		
△ cor.Corundum	△ ml.Millerite	▲ sod.Sodalite		
▲ dol.Dolomite	△ mo.Molybdenite	△ spec.Specularite		
△ ep.Epidote	▲ Mo.Molybdenum	△ sp.Sphalerite		
△ ery.Erythrite	△ mon.Monazite	△ spd.Spodumene		
▲ fel.Feldspar	▲ ne.Nephelite (nepheline)	△ staur.Staurolite		
▲ fl.Fluorite (fluorspar)	△ nc.Nicolite	△ stib.Stibnite		

Solid triangles indicate metal and mineral occurrences shown on the accompanying maps.

MINERAL OCCURRENCES				Additional References and/or Remarks
Map Ref. Letter	Name(s)	Mineralization	Source Mineral Deposit Record & M. D. I. R. 's (SO)	
A	GOLDHAWK (NORTH) OCCURRENCE Lots 17-22, Con 14-15	U, Th		ODM/OCS Map: 1957-1 OGS OFR 5311 p.224 Faraday Assess. Files: 67, 68, 70
B	BARKER QUARRIES Lots 41 & 42, Hastings Rd. W.	mb	#1258 #1259 S00421 S00422	ODM/OCS Maps: 1957-1, 1957b, P.1980, P.2567, P.1964-4, 52b GSC Maps: 15G, 16G, 708, 770 ODM AR Vol. 64-4 p.55-56 ODM AR Vol. 39-6 p.52 ODM AR Vol. 66-1 p.1-9 OGS OFR 5425 p.179-180 DEM/R/CANMET #100 p.321-325 DEM/R/CANMET #781 p.107-108 Faraday Assess. File: 77
C	GREYHAWK MINE Lots 9-11, Con 12	U, Th, per, Nb	#248 S00222	ODM/OCS Maps: 1957-1, 1957b, P.2210, P.972, P.2567, P.1964-4 GSC Maps: 15G, 708, 770 ODM AR Vol. 65-6 p.117-126 ODM AR Vol. 66-3 p.75-77 ODM AR Vol. 69-2 p.115-116 ODM AR Vol. 67-2 p.117-119 ODM AR Vol. 68-2 p.117-119 OGS OFR 5311 p.225-226 OGS OFR 5425 p.249 NMI #509576 GSC Ec.Geol.Ser.#16(1962) p.186,262 GSC Ec.Geol.Ser.#29 p.138 GSC Paper 69-45 p.209,443 DEM/R Mineral Report 12 p.240 Financial Post, Survey of Mines (1957)

p.225

GDIF FORM NO. 1

MINERAL OCCURRENCES			Source Mineral Deposit Record	References in OGS Mineral Deposits Circulars & OGS Industrial Mineral Reports	Additional References and/or Remarks
Map Ref. Letter	Name(s)	Mineralization			
	GREYHAWK MINE (cont'd.)				DEM/R/Mineral Policy Sector: Corporation Files Faraday Assess. File: 25
D	FARADAY (MADAWASKA) MINE Lots 16 & 17, Con 11	U, Th, ra	#247 S00223	MDC 23 p.58 MRC 4 p.37-38	ODM/OGS Maps: 1957-1, 1957b, P.2210 P.1964-4, 52b GSC Maps: 15G, 708, 770 ODM AR Vol. 65-6 p.108-116 ODM AR Vol. 66-3 p.70-75 ODM AR Vol. 71 p.134-136 ODM AR Vol. 74 p.144-146 ODM PR 1951-2 ODM PR 1964-4 ODM Annual Reports - Statistics of the Mineral Industry & Mining Operations in Ontario 1953 - 1969 OGS OFR 5311 p.221-223 OGS OFR 5425 p.19-20, 22 OGS OFR 5462 OGS MP 98 p.13-17 OGS MP 90 p.190 OGS MP 82 p.181-185 NMI #509550 GSC Ec. Geol. Ser. #16(1962) p.182-184 GSC Paper 69-45 p.15, 318, 127, 598 GSC Paper 80-1A p.253-264 GSC Paper 81-23 p.139-143 GSC Memoir 6 DEM/R Mineral Report 12 p.224-240 DEM/R/Mineral Policy Sector - Corporation Files

MINERAL OCCURRENCES				Additional References and/or Remarks
Map Ref. Letter	Name(s)	Mineralization	Source Mineral Deposit Record	
	FARADAY (MADAWASKA) MINE (cont'd.)			-Fin. Post. Survey of Mines (1970) p. 160 -24th International Geol. Congr. Field Excursion C67 p. 17-23 (1972) -Bullis, A. R. (1965) Cdn. Mining & Metallurgy Bull. Vol. 58#639 p. 713 -Darnley, A. G. (1972) Inst. Mining & Metallurgy p. 197 -Little, H. W. (1969) Econ. Geol. Vol. 64 p. 691-693 -Alexander, R. L. (1982) unpubl. report -Morris, H. R. (1956) M. Sc. Thesis - University of Toronto -CAC Special Paper 20 p. 149-170 Faraday Assess. Files: 4, 24, 9, 28 Helen Peterson Guide - #3
E	J. LOCKWOOD (SILVER CRATER MINES) Lot 29, Con A	U, Th	#251 S00218	ODM/OGS Maps: 1957-1, P. 2210, P. 972 ODM AR Vol. 65-6 p. 121 OGS OFR 5311 p. 262 GSC Paper 69-45 p. 596 NMI #509569 Faraday Assess. File: 23
F	BONVILLE OCCURRENCE Lots 21-24, Con A	U, Th, Nb	#245 S00219	ODM/OGS Maps: 1957-1, 1957b, P. 972 P. 2210 GSC Map: 15G ODM AR Vol. 65-6 p. 107-108 ODM GC 2 p. 49 OGS OFR 5311 p. 260 NMI #509574 & 070100 GSC Ec. Geol. Ser. #29 p. 86-87, 138

MINERAL OCCURRENCES			Source Mineral Deposit Record	References in OGS Mineral Deposits Circulars & OGS Industrial Mineral Reports	Additional References and/or Remarks
Map Ref. Letter	Name(s)	Mineralization			
	BONVILLE OCCURRENCE (cont'd)				GSC Ec.Geol.Ser. #16(1952) p.142 GSC Ec.Geol.Ser.#18 p.93 GSC Paper 69-45 p.443 Faraday Assess. Files: 24, 26
G	JONSEY, F. H. Lots 31-32, Con 14	U,Th	#249 S01038		ODM/OGS Maps: 1957-1,1957b,p.972 NMI #506882 Faraday Assess. Files: 7, 55
H	YORK RIVER OCCURRENCES A - C Zones - S½ Lots 2,3, Con 15 B Zone - N½ Lot 4, Con B D Zone - S½ Lot 6, Con 15	U,Th U,Nb U,Th,Nb	S00187 #255 S00217 #256 S00216	MDC 23 p.64-71 MDC 23 p.64-71 MRC 4 p.39-40 IMR 21 p.64 MRC 14 p.47 MDC 23 p.64-71 MRC 4 p.39-40 MRC 14 p.47	ODM/OGS Map: P.2210 ODM OGS Maps: 1957-1,1957b,p.972 P.2210 GSC Map: 770 NMI #509579 ; OGS OFR 5057 p.21 GSC Ec.Geol.Ser. #29 p.114. Faraday Assess. Files: 27 ODM/OGS Maps: 1957-1,1957b,p.972 P.2210 ODM AR Vol.65-6 p.170 OGS OFR 5311 p.231 NMI #509558 GSC Paper 69-45 p.247, 447 GSC Ec.Geol.Ser. #29 p.87, 138 Faraday Assess. File: 27 OGS OFR 5057 p.21

MINERAL OCCURRENCES			Source Mineral Deposit Record	References in OGS Mineral Deposits Circulars & OGS Industrial Mineral Reports	Additional References and/or Remarks
Map Ref. Letter	Name(s)	Mineralization			
	YORK RIVER OCCURRENCES (cont'd) E Zone - N½ Lots 9,10, Con B F Zone - S½ Lots 5,6, Con B G Zone - S½ Lot 8, Con B	U U U,Th	S00188	MDC 23 p. 64-71 MDC 23 p. 68 MDC 23 p. 64-71	
I	BANCROFT VILLAGE DEPOSIT East Side of Highway #62 at intersection between Hwy 62 & 28	ap, Y, Zn	S00091	MDC 22 p. 7	ODM/OGS Maps: 1957-1, 1957b, 1955-8, P. 1964-4, 52b, P. 2209, P. 2567 GSC Maps: 770, 708 ODM AR Vol. 64-8 OGS OFR 5425 p. 8-9
J	BASIN PROPERTY (SILVER CRATER MINES LTD.) Lot 31, Con 15	mi, U, Th, ap, Nb	#253 S01037	MRC 4 p. 35 MRC 14 p. 47 MRC 7 p. 36 MRC 8 p. 51	ODM/OGS Maps: 1957-1, 1957b, P. 972, 52b, P. 2567 GSC Map: 110G ODM AR Vol. 58-2 p. 88 ODM AR Vol. 52-3 p. 59 ODM AR Vol. 39-6 ODM AR Vol. 60-2 p. 84 ODM AR Vol. 65-6 p. 123-132, 20 ODM AR Vol. 66-3 p. 47, 76 ODM GC 2 p. 53 OGS OFR 5425 p. 13, 153 OFR 5311 p. 227 NMI #507710 & 511511 GSC Paper 69-45 p. 117, 205, 445 GSC Ec. Geol. Ser. #29 p. 96 GSC Ec. Geol. Ser. #18 p. 62-65 Helen Peterson Guide - #J

MINERAL OCCURRENCES		Mineralization	Source Mineral Deposit Record	References in OGS Mineral Deposits Circulars & OGS Industrial Mineral Reports	Additional References and/or Remarks
	BASIN PROPERTY (cont'd)				DEM/R/Min.Pol.Sector - Corp. Files: "Fidelity Mining Invest. Ltd." Giblin, (1955) M.Sc. Thesis - University of Toronto Faraday Assess. Files: 6,8,21,29
K	BAUMHOUR-CAMPBELL PROPERTY (SILVER CRATER MINES) Lots 27-30, Con 15 Lots 27-29, Con 14	U, RE, Th	#254 SO1041	MRC 4 p.35 IMR 21 p.54	ODM/OGS Maps: 1957-1,1957b,p.972 P.1508 GSC Map: 110G ODM AR Vol. 65-6 p.132-134 OGS OFR 5311 p.229 NMI #506884 GSC Paper 69-45 p.205 Faraday Assess. Files: 6,8,22,29, 18, 19, 55
L	BOW LAKE IRON MINE Lot 21, Con 10 & 11	mag	SO0225	MRC 11 p.153 MDC 20 p.96	ODM/OGS Maps: 1957-1,P.2211 GSC Map: 15G ODM AR Vol. 66-3 p.46-47 NMI #505966 GSC Bull #45 p.27-28 DEM/R/CANNET #184 p.22 DEM/R/CANNET #217 p.115
M	BRASCAN OCCURRENCE (WESTERN MINES) Lot 26, Con 15	U, Th	#1138 SO0221	MDC 23 p.57	ODM/OGS Maps: 1957-1,P.2210 GSC Map: 15G Cdn. Mines Handbook (1977) p.319 AFRO Tech. File #2.1994 AFRO DHR #14 Paraday Assess. Files: 6, 29

GOIF FORM NO. 1

MINERAL OCCURRENCES		Name(s)	Mineralization	Source Mineral Deposit Record	References in OGS Mineral Deposits Circulars & OGS Industrial Mineral Reports	Additional References and/or Remarks
N	MINER CARD FARM - MONCK RD. Lot 16, Con B	ap, fl	S00092	MDC 22 p.7 MRC 6 p.43	ODM/OGS Maps: 1957-1, 1957b, p.2209, P.2567, 52b, P.1964-4 GSC Maps: 15G, 770, 708 ODM AR Vol. 52-3 p.16 ODM AR Vol. 66-3 p.40 OGS OFR 5425 p.8 NMI #508873	
O	WILLIAM CARD FARM - MONCK RD. Lot 14, Con B	ap	S00093	MDC 22 p.8 MRC 6 p.42	ODM/OGS Maps: 1957-1, 1957b, p.2209, 52b, P.2567, P.1964-4 GSC Maps: 15G, 770, 708 ODM AR Vol. 52-3 p.15 ODM AR Vol. 66-3 p.40 OGS OFR 5425 p.8 NMI #508874	
P	FARADAY - Lot 32, Con 15	ap			ODM/OGS Maps: 1957-1, 1957b, 52b, P.1964-4, P.2567 GSC Maps: 770, 708 GSC Paper 69-45 p.50 OGS OFR 5425 p.8	
Q	CARDAY Lot 33, Con 14 (N½)	U, Th	#1131 S01039		ODM/OGS Maps: 1957-1, 1957b GSC Map: 110G OGS OFR 5311 p.76-77 Cardiff Assess. Files: 138, 140, 141, 163 Faraday Assess. Files: 52, 65, 66	

GDIF FORM NO. 1

MINERAL OCCURRENCES			Source Mineral Deposit Record	References in OGS Mineral Deposits Circulars & OGS Industrial Mineral Reports	Additional References and/or Remarks
Map Ref. Letter	Name(s)	Mineralization			
R	CARFRAE PROPERTY Lot 3, Con 12	mag	S00226	MDC 20 p. 96-97 MRC 11 p. 154	ODM/OGS Maps: 1957-1, 1957b, p. 2211 GSC Map: 15G ODM AR Vol. 66-3 p. 47 ODM PR 1951-2 p. 10 NMI #505967
S	CHUKUNI GOLD MINES Lot 33, Con 7 (N1/3)	U			ODM Map: 1957-1 OGS OFR 5311 p. 161 Cardiff Assess. Files: 190, 191
T	CONLIN LAKE Lot 3, Con 6	dol			ODM/OGS Maps: 1957-1, 1957b, 52b, P. 2567, P. 1964-4 GSC Maps: 770, 708 OGS OFR 5425 p. 179 DEM/CANMET #781 p. 108
U	CRYSTALLITE Lots 3 & 4, Con 12	dol	#1260 S00423	MDC 21 p. 113	ODM/OGS Maps: 1957-1, 1957b, p. 1980 52b, P. 1964-4, P. 2567 GSC Maps: 15G, 16G, 708, 770 ODM AR Vol. 66-1 p. 1-10 ODM AR Vol. 39-6 p. 55 ODM AR Vol. 52-3 p. 23 ODM AR Vol. 66-3 p. 42 OGS OFR 5425 p. 118, 179 DEM/CANMET #781 p. 108

MINERAL OCCURRENCES		Source Mineral Deposit Record	References in OGS Mineral Deposits Circulars & OGS Industrial Mineral Reports	Additional References and/or Remarks
V	EAGLE'S NEST OCCURRENCES (MOUNTAIN ZONE) Lot 69-70, Hastings Rd. W.	#246 S00209	MDC 23 p.11-12,17, 57-59,96,126 MRC 4 p.36	ODM/OGS Maps: 1957-1,1957b,P.2210 P.972 GSC Map: 15G NMI #509575 OGS OFR 5311 p.217-218 Financial Post Survey of Mines (1970) "Eagles Nest Mines" p.176 Withers, (1976) B.Sc. Thesis Freckelton, (1976) - Geological Report & Plans Dungannon Assess. Files: 13, 19 OGS OFR 5057 p.13
W	MORRISON/DILLON/MILLS Lot 6, Con 12		IMR 21 p.20	ODM/OGS Maps: 1957-1,1957b,P.1964-4, P.2567 GSC Maps: 770, 708 OGS OFR 5425 p.65 DEMR/CANNET #731 p.44
X	WOODS MINE		IMR 21 p.20	ODM/OGS Maps: 1957-1,1957b,P.2567 P.1964-4 GSC Maps: 708, 770 ODM AR Vol. 30-1 p.129 OGS OFR 5425 p.65, 295
Y	FARADAY - Lot 31, Con 15		IMR 21 p.20	ODM/OGS Maps: 1957-1,1957b,P.2567 P.1964-4 GSC Maps: 770, 708 OGS OFR 5425 p.65

MINERAL OCCURRENCES				Additional References and/or Remarks
Map Ref. Letter	Name(s)	Mineralization	Source Mineral Deposit Record	
Z	MORRISON/WOODS/EASTMAN Lots 5-7, Con A	fel		ODM/OGS Maps: 1957-1, 1957b, P. 2567 P. 1964-4 GSC Maps: 770, 708 ODM AR Vol 1 30-1 p. 129 OGS OFR 5425 p. 65
AA	TORNY FINANCIAL CORP. LTD. Lots 1-4, Con 1 Lots 1-6, Con 2	gf		ODM/OGS Maps: 1957-1, 1957b, P. 2567 52b GSC Maps: 708, 770 OGS OFR 5425 p. 140 Faraday Assess. File: 12 (Skrecky 1955)
BB	SPRAGUE Lot 12, Con 1	gf	S00539 IMR 20 p. 24	ODM/OGS Maps: 1957-1, 1957b, P. 2567, 52b GSC Maps: 708, 770 ODM AR Vol. 52-3 p. 34 ODM AR Vol. 39-6 p. 35 ODM AR Vol. 66-3 p. 46 OGS OFR 5425 p. 140
CC	FARADAY - Lot 13, Con 1	gf		DEMRCANMENT #18 p. 49
DD	STRAYNER LAKE Lots 19-21, Con B	ne		ODM/OGS Maps: 1957-1, 1957b, P. 2567 P. 1964-4 GSC Maps: 770, 708 ODM AR Vol. 66-3 p. 29 ; OGS OFR ODM AR Vol. 69-8 p. 58 5425 p. 233

G.D.I.F. FORM NO. 1

MINERAL OCCURRENCES				Additional References and/or Remarks
Map Ref. Letter	Name(s)	Mineralization	Source Mineral Deposit Record	
EE	LITTLEFOOLS LAKE NEPHELINE BAND Lot 25, Con B	ne		ODM/OGS Maps: 1957-1, 1957b, P.2567 P.1964-4 GSC Maps: 708, 770 ODM AR Vol. 66-3 p.29 ODM AR Vol. 69-8 p.56-58 OGS OFR 5425 p.233
FF	BENTLEY-SIDDON LAKES Lots 12-14, Con 12 & A	ne, gneiss		ODM/OGS Maps: 1957-1, ODM AR Vol. 65-6 p.122-123 ODM AR Vol. 66-3 p.29 ODM AR Vol. 69-8 p.55-64 OGS OFR 5311 p.259 OGS OFR 5425 p.242 Faraday Assess. Files: 10,56,60,72, 75
GG	BANCROFT Lots 1 & 2, Con A Hastings Rd. Lots 59 & 68 West	ne		ODM AR Vol. 69-8 p.56, 63-64 ODM AR Vol. 66-3 p.29 OGS OFR 5425 p.242
HH	YOUNGE'S FARM	sod, mi, cnn, ne, scap		ODM/OGS Maps: 1957-1, 1957b, 52b, P.2567, P.1964-4 GSC Maps: 708, 770 ODM AR Vol. 39-6 p.44, 46 ODM AR Vol. 52-3 p.67 OGS OFR 5425 p.215, 253, 266 GSC Memoir 6 GSC AR Vol. XI p.110A

MINERAL OCCURRENCES			Source Mineral Deposit Record	References in OGS Mineral Deposits Circulars & OGS Industrial Mineral Reports	Additional References and/or Remarks
Map Ref. Letter	Name(s)	Mineralization			
II	TANDA PROPERTY (ORMSBY GABBRO PROPERTY) Lot 11, Con 1	mag, fl	SMDR for Wollaston Twp. - no number		ODM/OGS Maps: 1957-1, 1957b, P.2567 52b, P.1964-4, 2020 GSC Maps: 708, 770 ODM GR 11 p.29-54 OGS OFR 5425 p.278 Wollaston Assess. File: 4 Limerick Assess. File: 2
JJ	GOLDHAWK OCCURRENCE - EAST GROUP Lot 13 & 14, Con A	U,Th	SO0189	MDC 23 p.60	ODM/OGS Maps: 1957-1, P.2210 ODM AR Vol. 65-6 p.117-118 OGS OFR 5311 p.261 Faraday Assess. Files: 3, 13
KK	GRIFFITH Lot 31, Con 16	U,Nb			ODM/OGS Maps: 1957b OGS OFR 5311 p.270 NMI #070030 GSC Paper 51-10 p.129 GSC Ec.Geol.Ser.#16(1952)p.142 GSC Ec.Geol.Ser.#18 p.93 GSC Ec.Geol.Ser.#29 p.85, 138
LL	HARLING FARM Lot 38-39, Hastings Rd. West	mb			OGS Map: P.2567 OGS OFR 5425 p.202 DEMR/CANNET #100 p.326
MM	HWY 62 ROADCUT	amyth			ODM/OGS CB 5 p.71

MINERAL OCCURRENCES			Source Mineral Deposit Record	References in OGS Mineral Deposits Circulars & OGS Industrial Mineral Reports	Additional References and/or Remarks
Map Ref. Letter	Name(s)	Mineralization			
NN	JEFFREY DEPOSIT Lot 12, Con 9	asp, Ag, Au	S00227	MDC 20 p. 27-28 MRC 10 p. 31	ODM/OGS Maps: 1957-1, 1957b, P. 608 P. 2211 GSC Maps: 15G ODM AR Vol. 52-3 p. 16 ODM AR Vol. 66-3 p. 40 ODM AR Vol. 52-2 p. 105 ODM AR Vol. 11. p. 102 NMI #501005 GSC Memoir 6 p. 205, 366-367
OO	KELLER MOLYBDENITE DEPOSIT Lot 21, Con A	Mo	S00224	MDC 20 p. 157 MRC 7 p. 36	ODM/OGS Maps: 1957-1, 1957b, P. 2211, 52b GSC Maps: 15G ODM AR Vol. 66-3 p. 50 NMI #508626
PP	HOWARD KERR OCCURRENCE (SILVER CRATER MINES) Lot 28, Con B	U, Th	#250 S00220	MRC 4 p. 36-37 MDC 23 p. 62-64 IMR 21 p. 64	ODM/OGS Maps: 1957-1, 1957b, P. 2210 P. 972 ODM AR Vol. 65-6 p. 121 NMI #509568 GSC Ec. Geol. Ser. #16(1962) p. 260 Faraday Assess. File: 55
QQ	MACLAN DEPOSIT Lot 6, Con 12	U, Th	#280 S00208	MDC 23 p. 140	ODM/OGS Maps: 1957-1, 1957b, P. 2210 GSC Map: 15G OGS OFR 5311 p. 263 NMI #509551 Cdn. Mines Handbook (1977/78) p. 186 AFRO: DLR #15 Faraday Assess. File: 5, 30, 42

GDIF FORM NO. 1

MINERAL OCCURRENCES			Source Mineral Deposit Record	References in OGS Mineral Deposits Circulars & OGS Industrial Mineral Reports	Additional References and/or Remarks
Map Ref. Letter	Name(s)	Mineralization			
RR	PACEMAKER Lots 12-13, Con 10	U,Nb			ODM/OGS Map: 1957-1 ODM AR Vol. 65-6 p.121-122 OGS OFR 5311 p.264 GSC Paper 59-10 p.37 GSC Ec.Geol.Ser. #29 p.85-86,138
SS	PIPE LAKE SHOWING Lot 11, Con 10	talc	S00114	MDC 22 p.192 IMR 40 p.30	ODM/OGS Maps: 1957-1,1957b,P.2567, P.1964-4,2142,52b,P.2209 GSC Maps: 770, 708 ODM AR Vol. 66-3 p.50 ODM AR Vol. 52-3 p.71 OGS OFR 5425 p.274
TT	REASOR, G.L. PROPERTY Lots 30-32, Con 16	U,Th,Nb	#252 S01040	MRC 4 p.39 IMR 21 p.54,64	ODM/OGS Maps: 1957-1,1957b,P.972 GSC Map: 110G ODM AR Vol. 65-6 p.122 OGS OFR 5311 p.265 NMI #506883 GSC Ec.Geol.Ser.#16(1952) p.142 GSC Ec.Geol.Ser.#29 p.85,115 Faraday Assess. Files: 6,8,29
UU	RITCHIE QUARRY (SOUTH BANCROFT) Lot 2, Con 12 (S½)	mb	#1262 S00424	MDC 21 p.111 IMR 16 p.25	ODM/OGS Maps: 1957-1,P.2567,P.198Q P.1964-4,52b, GSC Maps: 16G,15G,708,770 ODM AR Vol. 65-6 p.41 ODM AR Vol. 66-3 p.1-10, 41-42 ODM AR Vol. 39-6 p.53 OGS OFR 5425 p.179 DEM/CANMET #100 p.317 & #781 p.108

GDIF FORM NO. 1

MINERAL OCCURRENCES		Source Mineral Deposit Record	References in OGS Mineral Deposits Circulars & OGS Industrial Mineral Reports	Additional References and/or Remarks
VV	SAN RAFAEL (northwestern pt. of Twp.)			ODM/OGS Map: 1957-1 OGS OFR 5311 p.266
WW	TRENT RIVER DEPOSIT Lots 7-8, Con A-B	S00230	MDC 20 p.97	ODM/OGS Map: 1957-1, P.2211 NMI #070813 Min.Dress. & Proc. Met. Div. Invest. Rept. #M.D.-2996 Nov. 5, 1953
XX	WESTERN MINES Lot 28, Con 15 Lot 29, Con 16			Faraday Assess. Files: 57,58,61,76
YY	WINFIELD FARM Lot 40, Hastings Rd. W.			OGS Map: P.2567 OGS OFR 5425 p.202 DEM/R/CANMET #100 p.326
ZZ	WHITEFOOT LAKE DEPOSIT (Location Uncertain)	S00229	MDC 20 p.97 MRC 11 p.154	ODM/OGS Maps: 1957-1,1957b,P.2211 GSC Map: 15G NMI #505968 ODM PR 1951-2 p.9-10
AB	FARADAY - Lot 14, Con 3			NMI #070346 GSC Ec.Geol.Ser. #29 p.86, 138

MINERAL OCCURRENCES		Source Mineral Deposit Record	References in OGS Mineral Deposits Circulars & OGS Industrial Mineral Reports	Additional References and/or Remarks
AC	HWY 121 ROAD CUT Lot 31, Con A			Helen Peterson Guide - #10

MINERAL OCCURRENCES		Source Mineral Deposit Record	References in OGS Mineral Deposits Circulars & OGS Industrial Mineral Reports	Additional References and/or Remarks

TYPE OF WORK		Numbers below represent the year in which the work was done; e.g., 68 for 1968.															
		GEOLOGICAL	GEOCHEMICAL	TRENCHING, STRIPPING	DRILLING	ASSAY DATA	UNDERGROUND WORK	PROSPECTUS, NOTES, CORRESPONDENCE	AIRBORNE MAGNETOMETER	AIRBORNE ELECTROMAGNETIC	AIRBORNE RADIOMETRIC	GROUND MAGNETOMETER	GROUND ELECTROMAGNETIC	GROUND RADIOMETRIC	INDUCED POLARIZATION	SELF POTENTIAL	RESISTIVITY
1	ARTHUR GAMBLE A. Skrecky	55						55									
2	DENREE CONSOLIDATED MINES E.P. Sheppard										55			55			
3	GOLDHAWK PORCUPINE MINES LTD. E.P. Sheppard	54						54						54			
4	CONSOLIDATED CANADIAN FARADAY G.R. Guillet							68									
5	LEESA EXPLORATIONS LTD. A.C.A. Howe							68			68			68			
6	FIDELITY MINING INVESTMENTS L.G. Phelan	68												68			
7	F. H. JOWSEY D.R. Wilson							69						68			
8	FIDELITY MINING INVESTMENTS L.G. Phelan				69												
9	FARADAY URANIUM MINES LTD. N. Campbell & R. Laird				53	53											

Numbers below represent the year in which the work was done; e.g., 68 for 1968.

TYPE OF WORK	Numbers below represent the year in which the work was done; e.g., 68 for 1968.															
	GEOLOGICAL	GEOCHEMICAL	TRENCHING, STRIPPING	DRILLING	ASSAY DATA	UNDERGROUND WORK	PROSPECTUS, NOTES, CORRESPONDENCE	AIRBORNE MAGNETOMETER	AIRBORNE ELECTROMAGNETIC	AIRBORNE RADIOMETRIC	GROUND MAGNETOMETER	GROUND ELECTROMAGNETIC	GROUND RADIOMETRIC	INDUCED POLARIZATION	SELF POTENTIAL	RESISTIVITY
EXPLORATION DATA filed at the RESIDENT GEOLOGIST'S OFFICE BANCROFT																
COMPANY/AUTHOR (file number)																
10 RED BARK MINES/SAM TAYLOR A. Skrecky				55												
11 ALLAN WILLIAMS/TRENT RIVER IRON LTD. K.F. Bickford								54								
12 TORNY FINANCIAL CORP. LTD. A. Skrecky	55						55									
13 GOLDHAWK PORCUPINE MINES LTD./ RIDDELL LAKE GROUP E.P. Sheppard	55						55						55			
14 GOLDHAWK PORCUPINE MINES LTD. K.D. Thomson				55												
15 GOLDHAWK PORCUPINE MINES LTD. K.D. Thomson				55												
16 GOLDHAWK PORCUPINE MINES LTD. E.M. Wilson				55												
17 PACEMAKER MINES AND OILS LTD. H. Parliment, K.Schimunek				55												
18 SILVER CRATER MINES/BAUMHOUR CAMPBELL PROPERTY J.V. Fox				55												

TYPE OF WORK		Numbers below represent the year in which the work was done; e.g., 68 for 1968.															
		GEOLOGICAL	GEOCHEMICAL	TRENCHING, STRIPPING	DRILLING	ASSAY DATA	UNDERGROUND WORK	PROSPECTUS, NOTES, CORRESPONDENCE	AIRBORNE MAGNETOMETER	AIRBORNE ELECTROMAGNETIC	AIRBORNE RADIOMETRIC	GROUND MAGNETOMETER	GROUND ELECTROMAGNETIC	GROUND RADIOMETRIC	INDUCED POLARIZATION	SELF POTENTIAL	RESISTIVITY
19	EXPLORATION DATA filed at the RESIDENT GEOLOGIST'S OFFICE BANCROFT			56	56												
20					55	55											
21				54	55	54	55	54	55	56	54	55	56	54	55	56	
				56	55	55	56	55	56	55	56	55	56	55	56		
22																	
				56													
23																	
				54													
24				54	54	54	54	54	54	54	54	54	54	54	54	54	54
				55	55	55	55	55	55	55	55	55	55	55	55	55	55
				56	56	56	56	56	56	56	56	56	56	56	56	56	56
				57	57	57	57	57	57	57	57	57	57	57	57	57	57
25																	
				56	54	55	55	56	56	56	56	56	56	56	56	56	56
				56	55	55	56	56	56	56	56	56	56	56	56	56	56
				57	56	56	56	56	56	56	56	56	56	56	56	56	56

Numbers below represent the year in which the work was done, e.g., 68 for 1968.

TYPE OF WORK		GEOLOGICAL	GEOCHEMICAL	TRENCHING, STRIPPING	DRILLING	ASSAY DATA	UNDERGROUND WORK	PROSPECTUS, NOTES, CORRESPONDENCE	AIRBORNE MAGNETOMETER	AIRBORNE ELECTROMAGNETIC	AIRBORNE RADIOMETRIC	GROUND MAGNETOMETER	GROUND ELECTROMAGNETIC	GROUND RADIOMETRIC	INDUCED POLARIZATION	SELF POTENTIAL	RESISTIVITY				
																					70
26	EXPLORATION DATA filed at the RESIDENT GEOLOGIST'S OFFICE BANCROFT							54													
27	COMPANY/AUTHOR (file number) BONVILLE GOLD MINES LTD.			55 56 57																	
28	YORK RIVER URANIUM MINES LTD.																				
29	GEOLOGICAL SURVEY OF CANADA A.G. Darnley, M. Fleet							68													
30	FIDELITY MINING INVESTMENTS L.G. Phelan	70										70									
31	MACLAN EXPLORATION LTD. J.D. McCannell				70																
32	J. R. WILSON			70																	
33	R. M. STEWART J.R. Wilson			71																	
34	W. D. CAMERON J.R. Wilson			71																	
35	J. R. WILSON			71																	

TYPE OF WORK		Numbers below represent the year in which the work was done; e.g., 68 for 1968.																	
		GEOLOGICAL	GEOCHEMICAL	TRENCHING	STRIPPING	DRILLING	ASSAY DATA	UNDERGROUND WORK	PROSPECTUS, NOTES, CORRESPONDENCE	AIRBORNE MAGNETOMETER	AIRBORNE ELECTROMAGNETIC	AIRBORNE RADIONETRIC	GROUND MAGNETOMETER	GROUND ELECTROMAGNETIC	GROUND RADIOMETRIC	INDUCED POLARIZATION	SELF POTENTIAL	RESISTIVITY	
EXPLORATION DATA filed at the RESIDENT GEOLOGIST'S OFFICE BANCROFT	COMPANY/AUTHOR (file number)																		
	35 MACLAN EXPLORATION LTD. J. D. McCannell							70 72				72	72	70					
	36 R. M. STEWART			72															
	37 R. M. STEWART			72															
	38 W. D. CAMERON			72															
	39 J. R. WILSON			72 73															
	40 J. R. WILSON			72															
	41 J. R. WILSON			72															
	42 MACLAN EXPLORATIONS LTD. J. McCannell					73													
	43 J. R. WILSON			72															

TYPE OF WORK		Numbers below represent the year in which the work was done; e.g., 68 for 1968.															
		GEOLOGICAL	GEOCHEMICAL	TRENCHING, STRIPPING	DRILLING	ASSAY DATA	UNDERGROUND WORK	PROSPECTUS, NOTES, CORRESPONDENCE	AIRBORNE MAGNETOMETER	AIRBORNE ELECTROMAGNETIC	AIRBORNE RADIO-METRIC	GROUND MAGNETOMETER	GROUND ELECTROMAGNETIC	GROUND RADIOMETRIC	INDUCED POLARIZATION	SELF POTENTIAL	RESISTIVITY
53	BRASCAN L.G. Phelan	75	75					75			75	75	75				
54	KERR ADDISON MINES LTD. - GROUP A D.M. Hendrick		75					76									
55	KERR ADDISON MINES LTD. - GROUP B D.M. Hendrick		75					76									
56	ROBERT L. EKSTROM/BENTLEY & SIDDON LAKES R.L.V. Ekstrom							77			77						
57	WESTERN MINES LTD. Paul Nicholls			77													
58	WESTERN MINES LTD. Wagg							77			77						
59	CHUKUNI GOLD MINES LTD. A.S. Bayne			76 78													
60	ROBERT L. V. EKSTROM							78									78

Numbers below represent the year in which the work was done; e.g., 68 for 1968.

TYPE OF WORK		Numbers below represent the year in which the work was done; e.g., 68 for 1968.															
		GEOLOGICAL	GEOCHEMICAL	TRENCHING, STRIPPING	DRILLING	ASSAY DATA	UNDERGROUND WORK	PROSPECTUS, NOTES, CORRESPONDENCE	AIRBORNE MAGNETOMETER	AIRBORNE ELECTROMAGNETIC	AIRBORNE RADIOMETRIC	GROUND MAGNETOMETER	GROUND ELECTROMAGNETIC	GROUND RADIOMETRIC	INDUCED POLARIZATION	SELF POTENTIAL	RESISTIVITY
61	EXPLORATION DATA filed at the RESIDENT GEOLOGIST'S OFFICE BANCROFT				78												
	WESTERN MINES LTD. P. Nicholls			78													
62	ROGER MERCIER			78													
63	ROGER MERCIER			78													
64	R. L. V. EKSTROM				79												
65	CARDAY URANTUM MINES LTD. H. G. Harper							79				79					
66	CARDAY URANTUM MINES LTD. H. G. Harper							79			79						
67	ROGER MERCIER/HARPER-HALL- MERCIER PROJECT H. G. Harper							79			79		78	79	79		
68	ROGER MERCIER/HARPER-HALL- MERCIER PROJECT H. G. Harper							79									

TYPE OF WORK		Numbers below represent the year in which the work was done; e.g., 68 for 1968.															
		GEOLOGICAL	GEOCHEMICAL	TRENCHING, STRIPPING	DRILLING	ASSAY DATA	UNDERGROUND WORK	PROSPECTUS, NOTES, CORRESPONDENCE	AIRBORNE MAGNETOMETER	AIRBORNE ELECTROMAGNETIC	AIRBORNE RADIOMETRIC	GROUND MAGNETOMETER	GROUND ELECTROMAGNETIC	GROUND RADIOMETRIC	INDUCED POLARIZATION	SELF POTENTIAL	RESISTIVITY
EXPLORATION DATA filed at the RESIDENT GEOLOGIST'S OFFICE BANCROFT	COMPANY/AUTHOR (file number)																
	69 MERCIER EXPLORATIONS LTD. H.G. Harper				79						79			79			
70 MERCIER EXPLORATIONS LTD. H.G. Harper	79												79				
71 MERCIER EXPLORATIONS LTD. H.G. Harper	79										79						
72 R. L. V. EKSTROM				80													
73 ROGER MERCIER/MERCIER-HARPER- HALL PROJECT					78												
74 ROGER MERCIER/MERCIER-HARPER- HALL PROJECT														79			
75 R. L. V. EKSTROM				81													
76 WESTERN MINES LTD.				79													
77 STEELEY INDUSTRIES LTD. R.C. Hartviksen	76																

TYPE OF WORK		Numbers below represent the year in which the work was done; e.g., 68 for 1968.															
		GEOLOGICAL	GEOCHEMICAL	TRENCHING, STRIPPING	DRILLING	ASSAY DATA	UNDERGROUND WORK	PROSPECTUS, NOTES, CORRESPONDENCE	AIRBORNE MAGNETOMETER	AIRBORNE ELECTROMAGNETIC	AIRBORNE RADIOMETRIC	GROUND MAGNETOMETER	GROUND ELECTROMAGNETIC	GROUND RADIOMETRIC	INDUCED POLARIZATION	SELF POTENTIAL	RESISTIVITY
EXPLORATION DATA filed at the RESIDENT GEOLOGIST'S OFFICE BANCROFT	COMPANY/AUTHOR (file number)																
	CARDIFF TOWNSHIP FILES																
190C	CHUKUNI GOLD MINES LTD.																
163C	CARDAY URANIUM MINES H.G. Harper			76													
140C	CARDAY URANIUM MINES J. R. Lill	74															
141C	CARDAY URANIUM MINES J. R. Lill			73 74													
138C	CARDAY URANIUM MINES J. R. Lill																
13D	DUNCANNON TOWNSHIP FILES																
	EAGLES NEST MINES LTD.	57															
19D	CANADIAN NICKEL CO. LTD. D.J. Freckelton	76															

TYPE OF WORK		Numbers below represent the year in which the work was done; e.g., 68 for 1968.															
		GEOLOGICAL	GEOCHEMICAL	TRENCHING, STRIPPING	DRILLING	ASSAY DATA	UNDERGROUND WORK	PROSPECTUS, NOTES, CORRESPONDENCE	AIRBORNE MAGNETOMETER	AIRBORNE ELECTROMAGNETIC	AIRBORNE RADIOMETRIC	GROUND MAGNETOMETER	GROUND ELECTROMAGNETIC	GROUND RADIOMETRIC	INDUCED POLARIZATION	SELF POTENTIAL	RESISTIVITY
4W	EXPLORATION DATA filed at the RESIDENT GEOLOGIST'S OFFICE BANCROFT																
	COMPANY/AUTHOR (file number)																
	<u>WOLLASTON TOWNSHIP FILES</u> TANDA LTD. F.J. Twilley	69										69					
2L	<u>LIMERICK TOWNSHIP FILES</u> EDGAR H. ISLAND/RIO TINTO MINING CO. CAN. LTD./RIO CANADIAN EXPLORATION LTD./ ORMSBY GABBRO PROPERTY E. Neczkar	57															57

DRILLHOLE SUMMARY		Company Name	Company Drillhole Number	Date Drilled	Bearing Azimuth Degrees	Initial Dip of Hole Degrees	Thickness of Overburden Feet	Total Length of Hole Feet	Mineralization Noted in Log	Assay Data Included for
Map Drilling Location Number										
1		MACLAN EXPLORATION LTD. (File 30)	F-1	Jul 9/70	330	-50	9	510		
2		"	F-2	Jul 28/70	330	-55	17	515		Uranium
3		MACLAN EXPLORATION LTD. (File 42)	F-3	Oct 8/73	338	-45	9	354		Ni, Cu, MoS ₂ , Ag, Au
3		"	F-4	Oct 17/73	350	-45	13.8	350		Uranium
3		"	F-5	Oct 23/73	350	-45	10	313		
4		ROGER MERCIER (File 69)	M80-6	1980	-	-45	-	-		
4		"	M80-7	1980	-	-45	-	-		
5		"	M79-1	1979	-	-70	-	-		
5		"	M79-2	1979	-	-90	-	-		
5		"	M79-3	1979	-	-70	-	-		
5		"	M79-4	1979	-	-70	-	-		
6		GOLDHAWK PORCUPINE MINES (File 15)	W3	Feb 17/55	N15W	-45	60	423		
7		"	W6	Feb 25/55	S10W	-45	9	360		
8		"	W7	Mar 14/55	N65W	-45	52	523		

SDIF FORM NO. 3

DRILLHOLE SUMMARY		Company Name	Company Drillhole Number	Date Drilled	Bearing Azimuth	Initial Dip of Hole	Thickness of Overburden	Total Length of Hole	Mineralization Noted in Log	Assay Data Included for
Map Drilling Location Number										
9	GOLDBAWK PORCUPINE MINES (File 20)	S-45	Apr 18/55	N50W	-41	10	165			
10	GOLDBAWK PORCUPINE MINES (File 14)	S-46	Apr 23/55	N70W	-35	10.5	400			
11	RED BARK MINES LTD. (File 10)	F-4	Feb 21/55	-	-90	70	326			
12	FARADAY URANIUM MINES LTD. (File 9)	63	Mar 14/54	N37W	-45	8.1	397.6			
13	"	101	Oct 19/53	N23°33'W	-45	6.3	188			
13	"	102	Oct 22/53	S23°33'E	-45	15	209.2			
13	"	103	Oct 26/53	N23°33'W	-45	5.1	220			
13	"	104	Oct 29/53	N23°33'W	-45	30	139.6			
13	"	105	Nov 2/53	N23°33'W	-45	5	202.3			
13	"	106	Nov 5/53	N23°33'W	-45	6.3	300			
14	FARADAY URANIUM MINES LTD. (File 24)	SEE FILE FOR DETAILS								
15	R.L.V. EKSTROM (File 72)	1-1980	Mar 24/80	N38E	-45	45	45			
15	"	2-1980	Mar 27/80	N60E	-45	34	34			
15	"	3-1980	Mar 28/80	N70E	-50	11	122			

GDIF FORM NO. 3

DRILLHOLE SUMMARY		Company Name	Company Drillhole Number	Date Drilled	Bearing Azimuth	Initial Dip of Hole	Thickness of Overburden	Total Length of Hole	Mineralization Noted in Log	Assay Data Included for
Map Drilling Location Number	Map Drilling Location Number									
15		R.L.V. EKSTROM (FILE 75)	1-1981	Sep 23/81	NW	-85	1.2	156.9		
15		R.L.V. EKSTROM (FILE 64)	1	Jun 19/79	-	-90	4	124		
16		WESTERN MINES LTD. (FILE 61)	78-10	Jul 3/78	230	-50	9	156		
17		"	78-11	Jul 4/78	230	-50	5	150		
17		"	78-12	Jul 5/78	254	-50	7	156		
17		WESTERN MINES LTD. (FILE 76)	79-6	Mar 23/79	230	-50	6	250		Uranium
18		FIDELITY - FARADAY (FILE 8)	69-1	1969	W	-45	-	402.5		Uranium
18		"	69-2	1969	E	-45	14	257		"
18		"	69-5	1969	E	-45	12	357		"
18		"	69-6	1969	E	-50	37	321.5		"
18		"	69-7	1969	E	-50	36	302.5		"
18		"	69-8	1969	E	-45	38	359		"
18		"	69-9	1969	E	-45	38	346.5		"
18		"	69-10	1969	E	-45	68	379		"
19		"	69-3	1969	E	-45	5	430		"
19		"	69-4	1969	E	-45	9	423		"

GDIF FORM NO.3

DRILLHOLE SUMMARY		Company Name	Company Drillhole Number	Date Drilled	Bearing Azimuth	Initial Dip of Hole	Thickness of Overburden	Total Length of Hole	Mineralization Noted in Log	Assay Data Included for
Map Drilling Location Number										
20	FIDELITY - PARADAY (File 8)	69-12	1969	65	-45	7	395		Uranium	
20	"	69-13	1969	65	-45	5	615		"	
20	"	69-14	1969	65	-45	4	360		"	
20	"	15	1969	65	-45	6	488		"	
20	"	69-16	1969	E	-45	9	402		"	
20	"	69-17	1969	E	-45	4	522		"	
20	"	69-18	1969	W	-45	4	456		"	
20	"	69-19	1969	W	-45	4	538		"	
20	"	69-20	1969	W	-45	5	513		"	
20	"	69-21	1969	W	-45	4	512		"	
21	SILVER CRATER MINES LTD. (File 18)	38	Jun 1/55	N35W	-45	6.5	150			
22	SILVER CRATER MINES LTD. (File 21)	5	1954?	S56E	-40	-	300			
23	"	14	1954?	N30W	-35	-	245			
23	"	15	1954?	N25W	-45	-	301			
24	"	1	1954?	N60W	-52	17	505			
24	"	2	1954?	S44W	-35	7.5	191			

GDIF FORM NO. 3

DRILLHOLE SUMMARY		Company Name	Company Drillhole Number	Date Drilled	Bearing Azimuth	Initial Dip of Hole	Thickness of Overburden	Total Length of Hole	Mineralization Noted in Log	Assay Data Included for
Map Drilling Location Number										
24	SILVER CRATER MINES (File 21)	3	1954?	S44W	-45	5	124			
24	"	4	1954?	-	-90	5	105			
24	"	6	1954?	S50E	-45	14	133			
24	"	7	1954?	N60W	-45	11	162			
24	"	8	1954?	N60W	-35	20	207			
24	"	16	1954?	N55W	-37	12	215			
24	"	17	1954?	N55W	-45	10	242			
24	"	18	1954?	W	-45	11	207			
24	"	19	1954?	N55W	-45	12	271			
24	"	20	1954?	-	-90	5	68			
24	"	21	1954?	-	-90	3	501			
24	"	22	1954?	-	-	2.5	84			
24	"	23	1954?	-	-	6	88			
24	"	24	1954?	-	-	8	85			
24	"	25	1954?	-	-90	8	77			
24	"	26	1954?	-	-90	3	86			
24	"	27	1954?	-	-90	5	94			

GDIF FORM NO. 3

DRILLHOLE SUMMARY		Company Name	Company Drillhole Number	Date Drilled	Bearing Azimuth	Initial Dip of Hole	Thickness of Overburden	Total Length of Hole	Mineralization Noted in Log	Assay Data Included for
Map Drilling Location Number										
24	SILVER CRATER MINES LTD. (File 21)	28	1954?	-	-90	3.5	68			
24	"	29	1954?	-	-	3	69			
24	"	30	1954?	-	-	3	52			
24	"	31	1954?	-	-	5	56			
24	"	32	1954?	-	-	2.5	102			
24	"	33	1954?	-	-	8	97			
24	"	34	1954?	-	-	11	96			
24	"	35	1954?	-	-	22	104			
24	"	36	1954?	-	-	4.5	112			
25	SILVER CRATER MINES LTD. (File 19)	52	Feb 10/56	-	-45	5	325			
25	"	53	Feb 13/56	N11W	-45	6	338			
25	"	54	Feb 22/56	N11W	-45	7.2	343			
25	"	55	Feb 28/56	N11W	-45	9	313			
25	"	56	Mar 3/56	N11W	-45	7	331			
25	"	57	Mar 7/56	N11W	-45	5	335			
25	"	58	Mar 13/56	N11W	-45	5	333			

GDIF FORM NO.3

DRILLHOLE SUMMARY		Company Name	Company Drillhole Number	Date Drilled	Bearing Azimuth	Initial Dip of Hole	Thickness of Overburden	Total Length of Hole	Mineralization Noted in Log	Assay Data Included for
Map Drilling Location Number										
25	SILVER CRATER MINES LTD. (File 19)	59	Mar 19/56	N11W	-45	41.5	77			
25	"	59a	Mar 21/56	N11W	-45	39	350			
25	"	60	Mar 26/56	N11W	-45	80.5	469			
26	GOLDHAWK PORCUPINE MINES (File 16)	M-48	Sep 2/55	N23W	-45	5	161.5			
27	PACEMAKER MINES AND OILS (File 17)	1	Aug 18/55	S32E	-45	6	603			
27	"	3	Sep 10/55	S32E	-45	41	701			
28	"	2	Sep 1/55	S32E	-45	14	743			
29	CARDAY URANIUM MINES (File 163C)	76-2	Nov 12/76	N30W	-45	14	352			
30	SILVER CRATER MINES LOCKWOOD (File 23)	1	1954	-	-35	-	-			
30	"	2	1954	-	-40	-	297			

S.D.F. FORM NO. 3

AIRBORNE GEOPHYSICAL SURVEY DATA

No.	By For	Type of Survey	Flight Altitude	Flight Line Direction	Flight Line Spacing
1	By: Geotrex For: Western Mines Ltd.	Magnetometer Radiometric	150 ft.	NE-SW	1/8 mile

GDIF FORM NO. 4

GEOCHEMICAL SURVEY DATA			Reference
Map Sample Site Reference Number	Type of Survey	Analysis For	
1	Soil Water	Uranium - Radon Radon	By: Projex Limited For: Brascan File 53
2	Radon Gas	Radon - Uranium	Kerr Addison Mines File 54
3	Radon Gas	Radon - Uranium	Kerr Addison Mines File 55

MISCELLANEOUS DATA

AGE DATING

Site	Method	Material	Reference	Result

Empty space for additional notes or data.

NEWSPAPER CLIPPINGS FILE

NOTE: A file of newspaper clippings about the companies listed below, who have worked in this area, is maintained in the Regional/Resident Geologist's Office. Bancroft

Some of the articles are known to exist, however they are not on file.

Bonville Gold Mines Ltd.

- Northern Miner Articles

Feb 25/54; Dec 2/54; Aug 22/57

(Bonville Occurrence)

- Globe & Mail Articles

Nov 29/54

Faraday Uranium Mines/Consolidated - Northern Miner Articles

Faraday Uranium Mines

(Faraday/Madawaska Mine)

Jan 20/54; Mar 4/54; Apr 8/54;
Aug 12/54; Aug 26/54; Oct 21/54;
Nov 18/54; Dec 2/54; Dec 9/54;
Jan 27/55; Feb 3/55; Feb 11/55;
Feb 17/55; Feb 24/55; Mar 3/55;
Mar 17/55; Mar 24/55; Apr 28/55;
May 12/55; May 19/55; Jun 2/55;
Jun 9/55; Jun 23/55; Jun 30/55;
Jul 19/55; Jul 21/55; Aug 18/55;
Oct 6/55; Nov 10/55; Jan 12/56;
May 29/56; Jun 28/56; Dec 20/56;
Jan 31/57; Mar 14/57; Mar 28/57;
Apr 4/57; May 30/57; Jun 6/57;
Jun 20/57; Aug 8/57; Sep 5/57;
Oct 24/57; Oct 31/57; Jan 30/58;
Apr 17/58; Apr 16/59; Dec 31/70;
Jun 15/78

- Western Miner & Oil Review

May 1957 - Vol. 30 #5 p.35-47

- Globe and Mail Articles

Nov 27/54; Dec 9/54; Jan 19/55;
Jan 21/55; May 23/80

Goldhawk Porcupine Mines

- Northern Miner Articles

(Greyhawk Mine)

Jul 15/54; Sep 16/54; Nov 18/54;
Dec 9/54; Dec 23/54; Mar 24/55;
May 12/55; May 19/55; Jun 23/55;
Jul 7/55; Oct 27/55; Nov 17/55

Greyhawk Uranium Mines

- Northern Miner Articles

(Greyhawk Mine)

Dec 15/55; Jan 25/56; May 3/56;
May 24/56; May 26/56; Jul 5/56;
Dec 13/56; Jan 24/57; Mar 14/57;
May 16/57; May 23/57; Jul 4/57;
Aug 22/57; Aug 29/57; Oct 3/57;

NEWSPAPER CLIPPINGS FILE

NOTE: A file of newspaper clippings about the companies listed below, who have worked in this area, is maintained in the Regional/Resident Geologist's Office. Bancroft

Greyhawk Uranium Mines (cont'd)

Oct 17/57; Oct 24/57; Feb 20/58;
Feb 27/58; Mar 13/58; Apr 24/58

San Rafael

- Northern Miner Article

Dec 8/77

ODM GENERAL INDEX SEARCH

Words searched:

FARADAY TOWNSHIP

Index Volume	Listing:	Report Volume	Part	Page
1	<u>FARADAY TOWNSHIP</u>			
	apatite	9	-	194
	corundum	8	-	216-218
	geology	22	ii	9,10,85
	gneiss	15	i	106
	iron ore	RC	-	133
	iron smelting	7	-	234
	map	22	ii	83
	marble quarrying	22	i	37
	" "	23	i	29
	marble	20	i	31,108, 112
	mispickel	11	-	102,198
	"	22	ii	105
	photo	20	i	114
	quarrying	22	ii	120
	"	16	i	82
	"	17	-	93
	"	21	i	30
	"	24	i	166
	railways	2	-	61
	sodalite	15	i	106
	"	16	i	26
	"	19	i	124
	syenite	7	-	226-229
	"	8	-	245
	trap quarrying	25	i	30
	zircon	9	-	212
2	<u>FARADAY TOWNSHIP</u>			
	dolomite	30	1	120
	feldspar	30	1	127,129
	limestone quarry	31	10	73
	magnetite	I.O.	-	218
	marble	26	-	40
	mica	35	1	35,136
	molybdenite	28	1	35
	sand pit	27	2	54,55
3	<u>FARADAY TOWNSHIP</u>			
	corundum	39	6	39
	graphite	39	6	35
	limestone	39	6	60
	"	46	1	85

ODM GENERAL INDEX SEARCH

Words searched:

FARADAY TOWNSHIP

Index Volume	Listing:	Report Volume	Part	Page
3	<u>FARADAY TOWNSHIP</u> (cont'd)			
	marble	39	6	52
	"	41	1	61
	"	47	1	74
	mica	36	1	35
	"	39	6	44
	"	44	1	61
	nepheline syenite	46	1	47,85
	" "	48	1	63
	" "	49	1	36,63
	prospectors	38	1	67
	sodalite	39	6	46
	stucco dash	39	6	55
4	<u>FARADAY TOWNSHIP</u>			
	apatite	52	3	15
	arsenopyrite	52	3	16
	corundum	52	3	74
	dolomite	52	3	22,68-70
	feldspar	52	1	58
	"	52	3	24-25
	"	55	2	2
	"	56	2	1-2
	graphite	52	3	34
	garnet	52	3	30
	magnetite	52	3	39
	mica	52	3	59
	"	53	1	180
	mica & stone	57	2	100
	" "	58	2	88
	" "	59	2	86
	molybdenite	52	3	61
	nepheline syenite	52	3	4,11,63
	quartz veins	52	3	31
	rocks	52	3	9
	radioactive minerals	52	3	15,16,66
	sand & gravel	54	1	57
	" "	56	1	57-58
	sodalite	52	3	67
	talc	52	3	71

ODM GENERAL INDEX SEARCH

Words searched:

FARADAY TOWNSHIP

Index Volume	Listing:	Report Volume	Part	Page
5	<u>FARADAY TOWNSHIP</u>			
	granite	64	8	40
	marble	64	8	55
	map	64	8	6
	mica	60	2	84
	rocks	64	8	18,20,29
	uranium	64	2	140-141
6	<u>FARADAY TOWNSHIP</u>			
	corundum	66	3	17,41
	iron	66	3	46-47
	metagabbro	66	3	22-27,71, 75
	mica	66	3	48
	nepheline syenite	69	8	56-64
	rocks & photos	66	3	16,17
	uranium	65	2	142-149
	"	65	6	
	"	66	2	140-148
	"	66	3	53,70-78
	"	67	2	145-148
	"			153-155
	"	68	2	117-119
	"			108-111
	"	69	2	113-115
	"			107-108
7	<u>FARADAY TOWNSHIP</u>			
	general	GC 13	-	122
	graphite	IMR 20	-	24
	marble (dolomite)	IMR 16	-	23-25
	rare earths	IMR 21	-	64
	talc	IMR 40	-	30
	uranium	70	-	126-128
	"	71	-	134-136
	"	72	-	146
	"	73	-	152-153
	"	IMR 21	-	6,54
	"	GC 2	-	48-53

SELECTED REFERENCES		Date	Author	Title	Reference	Map Scales and/or Report Pages
GEOLOGICAL MAPS WITHOUT REPORTS						
Gibson, Shirley	1970	Faraday Township, Hastings County, Data Series	ODM + Northern Affairs Map P.608	1" = 1/2 mile		
Gordon, J.B.	1980	Vein Silver Deposits of Ontario, Southern Ontario and District of Nipissing, Ontario Geological Survey, Preliminary Map, Mineral Deposits Series. Compilation 1975, 1977, 1978.	OGS Map P.2301	1" = 16 miles		
Hewitt, D.F. and Satterly, J.	1957	Haliburton-Bancroft Area, Province of Ontario. Revised 1972.	ODM Map 1957b	1" = 2 miles		
Lumbers, S.B.	1976	Ontario Geological Map, Southern Sheet, NTS 30/NW, 31/S, 40/NE, 41/SE, (revision of Map 2197)	OGS Map 2392	1" = 16 miles		
Masson, S.L.	1982	Geology and Mineral Deposits of the Bancroft Area, Eastern Part, Southern Ontario, Geological Series. Geology 1978, 1979, 1980.	OGS Map P.2524	1:10 000		
Masson, S.L.	1982	Geology and Mineral Deposits of the Bancroft Area, Western Part, Southern Ontario, Geological Series. Geology 1978, 1979, 1980.	OGS Map P.2523	1:10 000		
Meyn, H.D. & Robertson, J.A.	1975	Iron Deposits of Ontario Southern Sheet, Southern Ontario and District of Nipissing, Mineral Deposits Series. Compilation 1972, 1973, 1974.	ODM Map P.1044	1" = 16 miles		
Meyn, H.D. & Howarth, J.R.	1977	Molybdenum Deposits of Ontario, Southern Sheet, Southern Ontario and District of Nipissing, Mineral Deposit Series. Compilation 1975, 1976.	OGS Map P.1247	1" = 16 miles		
Robertson, J.A., Gordon, J.B. and Rybak, R.	1981	Uranium and Thorium Deposits of Ontario, Southern Sheet, Southern Ontario and Nipissing, Muskoka, Parry Sound, Sudbury, and Manitoulin Districts, Mineral Deposit Series. Compilation 1979, 1980, 1981.	OGS Map P.2424	1" = 16 miles		

SELECTED REFERENCES		Date	Author	Title	Reference	Map Scales and/or Report Pages
Ontario Geological Survey	1974			Ontario Mineral Map	OGS Map 2310	1" = 25 miles
Bright, E.G.	1983			Precambrian Geology of the Centre Lake Area, Eastern Part, Haliburton & Hastings Counties	OGS Map P.2598	1" = 1/4 mile
Adams, F.D. and Barlow, A.E.	1910			<u>GEOLOGICAL REPORTS WITH MAPS</u> Geology of the Haliburton and Bancroft Areas, Ontario.	GSC Memoir 6 GSC Map 770 GSC Map 708	1" = 2 miles 1" = 4 miles
Bedell, R.L. & Schwerdtner	1983			Ontario Geoscience Research Grant Program, Grant No. 82, Structural Controls of Uranium-Ore Bodies in the Madawaska Mines, Bancroft Area	OGS OFR 5462 (3 maps)	90 p. 1" = 400 ft.
Carter, T.R., Colvine, A.C. and Meyn, H.D.	1980			Geology of Base Metal, Precious Metal, Iron and Molybdenum Deposits in the Pembroke-Renfrew Area,	OGS MDC 20 OGS Map P.2211	186 p. 1" = 2 miles
Hewitt, D.F.	1957			Geology of Cardiff and Faraday Townships	ODM AR Vol. 66 Pt.3 ODM Map 1957-1	82 p. 1" = 1/2 mile
Hewitt, D.F. and James, W.	1956			Geology of Dungannon and Mayo Townships	ODM AR Vol. 64 Pt.8 ODM Map 1955-8	65 p. 1" = 1/2 mile
Hewitt, D.F.	1961			Nepheline Syenite Deposits of Southern Ontario	ODM AR Vol. 69 Pt.8 ODM Maps 1960e + 1960f	194 p. 1" = 1/2 mile
Hewitt, D.F.	1962			Geology of Wollaston Township, Hastings County	ODM GR 11 ODM Map 2020	59 p. 1" = 1/2 mile

SELECTED REFERENCES		Reference	Map Scales and/or Report Pages
Lang, A.H., Griffith, J. W., and Steacy	1962	GSC Econ. Geol. Ser. No. 16 (2nd edition) GSC Map 1045A-MI	324 p. 1" = 120 miles
Ledoux, A.	1918	ODM AR Vol. 27 Pt. 2 ODM Map 27B	p. 1-110 1" = 35 miles
Lumbers, S.B.	1964	ODM PR 1964-4 Figure 7	37 p. 1" = 2 miles
Martin, Wendy	1983	OGS OFR 5425 OGS Map P.2567	316 p. 1:125 000
Masson, S.L. Gordon, J.G.	1981	OGS MDC 23 OGS Map P.2210	155 p. 1" = 2 miles
Miller, W.G.	1898	ODM AR Vol. 7 Pt. 3 ODM Map 7C	p. 207-238 1" = 2½ miles
Miller, W.G.	1902	ODM AR Vol. 11 ODM Map 11C	p. 186-207 1" = 4 miles
Miller, W.G. and Knight, C.W.	1914	ODM AR Vol. 22 Pt. 2 ODM Maps 22A, 22F, 220	151 p. 4" = 1 mile
Osborne, F.F.	1930	ODM AR Vol. 39 Pt. 6 ODM Map 39h	p. 22-59 1:250 000

SELECTED REFERENCES		Date	Author	Reference		Map Scales and/or Report Pages
				Title		
Storey, C.C. & Vos, M.A.	1981	Industrial Minerals of the Pembroke-Renfrew Area Part 1: Marble	OCS MDC 21 OCS Map P.1980	132 p. 1:126 720		
Thomson, Jas. E.	1981	Industrial Minerals of the Pembroke-Renfrew Area Part 2	OCS MDC 22 OCS Map P.2209	214 p. 1" = 2 miles		
Vos, M.A. & Storey, C.C.	1943	Mineral Occurrences in the North Hastings Area	ODM AR Vol.52 Pt.3 ODM Map 52b	80 p. 1" = 2 miles		
	1978	Marbles of the Pembroke-Renfrew Area	OCS MP 80 OCS Map P.1980	17 p. 1:126 720		
<u>GEOLOGICAL AND TECHNICAL REPORTS WITHOUT MAPS</u>						
Abraham, E.M.	1951	Geology in the vicinity of aeromagnetic anomalies on the Bancroft and Coe Hill Sheets, Southern Ontario	ODM PR 1951-2			
Alexander, R.L.	1982	Geology of Madawaska Mines Limited in Bancroft, Ontario, unpublished report in Resident Geologist's Files, Bancroft, Ontario.		36 p.		
Arnoldi, M.G.	1958	Statistical Review of the Mineral Industry for 1956	ODM AR Vol.66 Pt.1	p.1-41		
Bedell, R.L.	1982	Influence of a Metamorphosed Gabbro in the control of Uranium Bearing pegmatite dykes, Madawaska Mines, Bancroft, Ontario; in Uranium in Granites, ed. Y.T. Maurice; Geological Survey of Canada.	GSC Paper 81-23	p.139-143		

SELECTED REFERENCES			Map Scales and/or Report Pages
Author	Date	Title	
Bedell, R.L. and Schwerdtner, W.M.	1981	Structural Controls of U-Ore Bearing Pegmatite Dikes at Madawaska Mines, Bancroft, Ontario in Geoscience Research Grant Program, Summary of Research 1981-1982, edited by E.G. Pye	219 p.
	1981	Structural Controls of U-Ore Bodies in the Madawaska Mine Area, Bancroft, Ontario, in Geoscience Research Grant Program, Summary of Research 1980-81, edited by E.G. Pye.	340 p.
Blue, A.	1893	The Iron Ores of Ontario	p. 31-78
Bright, E.G.	1979	The Centre Lake Area, Haliburton and Hastings Counties p.86-88 in Summary of Field Work 1979, by the Ontario Geological Survey, edited by V.G. Milne, O.L. White, R.B. Barlow, and C.R. Kustra	245 p.
Bourque, M. S.	1982	Stratigraphy and Sedimentation of Carbonate Metasediments within the Grenville Supergroup in the Havelock-Madoc-Bancroft Area p. 89-91 in Summary of Field Work 1982, edited by John Wood, Owen L. White, R.B. Barlow, and A.C. Colvine	235 p.
Burwash, E.M.	1930	Classes for Prospectors 1928-1929	p. 66-68
Canadian Mines Handbook	1977	Madawaska Mining Limited, published by Northern Miner Press Limited	p. 186
"	1977	Maclean Explorations Limited, published by Northern Miner Press Limited	p. 186
"	1977	Western Mines Limited, published by Northern Miner Press Limited	p. 319

		SELECTED REFERENCES		Map Scales and/or Report Pages
		Date	Reference	
Author	Title			
Carter, T.R. and Colvine, A.L.	Mineral Deposits of Metals Exclusive of Uranium p.189-193 in Summary of Field Work, 1978, by the Ontario Geological Survey, edited by V.G. Milne, O.L. White, R.B. Barlow and J.A. Robertson	1978	OCS MP 82	235 p.
Carter, T.R. and Colvine, A.C.	The Geology and Preliminary Metallogenetic Classification of Metallic Mineral Deposits of the Grenville Province of Southern Ontario p.199-207 in Summary of Field Work, 1979, by the Ontario Geological Survey, edited by V.G. Milne, O.L. White, R.B. Barlow and C.R. Kustra	1979	OCS MP 90	245 p.
Chamberlain, J.A.	Hydrogeochemistry of Uranium in the Bancroft-Haliburton Region, Ontario	1964	GSC Bull. 118	19 p.
Cirkel, F.	Graphite: its properties, occurrence, refining and uses; Canada Department of Mines, Mines Branch	1905	DEM/R/CANMET #18	307 p.
Corkill, E.T.	Mines of Ontario	1906	ODM AR Vol.15 Pt.1	p.47-107
Corkill, E.T.	Mines of Ontario	1907	ODM AR Vol.16 Pt.1	p.55-91
Corkill, E.T.	Mines of Ontario	1908	ODM AR Vol.17	p.58-94
Corkill, E.T.	Mines of Ontario	1910	ODM AR Vol.19	p.78-130
Corkill, E.T.	Mines of Ontario	1911	ODM AR Vol.20 Pt.1	p.86-118
Dawson, K.R.	Niobium (Columbium) and Tantalum in Canada	1974	GSC Econ.Geol.Ser. No. 29	157 p.

SELECTED REFERENCES		Date	Reference	Map Scales and/or Report Pages
Author	Title			
Department of Energy, Mines and Resources	Mineral Policy Sector - Corporation Files - Consolidated Canadian Faraday Mines Ltd. - Greyhawk Mines Ltd. - Silver Crater Mines Ltd. - Madawaska Mines Ltd. - Fidelity Mining Investment Ltd. - Metal Mines Ltd. - Federal Resources Corporation	?		
"	Report #M.D.-2996, November 5, 1953, Min.Dress. & Proc. Met. Div. Invest.	1953		
Ferguson, S.A.	Columbium, Niobium Deposits of Ontario	1971	ODM + Northern Affairs MRC 14	58 p.
Field, D.J.	Mining Operations in 1954	1956	ODM AR Vol.64 Pt.2	154 p.
"	Mining Operations in 1955	1957	ODM AR Vol.65 Pt.2	162 p.
"	Mining Operations in 1957	1957	ODM AR Vol.67 Pt.2	183 p.
"	Mining Operations in 1956	1958	ODM AR Vol.66 Pt.2	171 p.
Freckelton, D.J.	Geological Report and Plans, Eagles Nest Uranium Mines Property, Ontario Geological Survey, Assessment Files	1975	Dungannon File 19	
Fyson, W.K. and Baer, A.J. and Habib, M.K.	Structural Fabric and Uranium Distribution in Shear Zones near Cardiff, Ontario, p.83-85 in Geoscience Research Grant Program, Summary of Research, 1979-1980, edited by E.G. Pye	1980	OCS MP 93	262 p.
"	Ontario Geoscience Research Grant Program Final Research Reports, Structural Fabric and Uranium Distribution in Shear Zones near Cardiff.	1981	OCS OFR 5349 Article 4	

SELECTED REFERENCES			Reference	Map Scales and/or Report Pages
Author	Date	Title		
Gibson, Shirley J.	1973	Southern Ontario District p.105-119 in Annual Report of Resident Geologist Section, Geological Branch, 1972	ODM MP 54	180 p.
"	1974	Southern Ontario Regions, p.103-119 in Annual Report Resident Geologists Section, Geological Branch, 1973, edited by C.R. Kustra	ODM MP 57	183 p.
Gibson, Shirley, et al	1975	Bancroft Area Minerals (Minor Revision 1981)	OMNR Brochure	
Gibson, T.W.	1907	Statistical Review	ODM AR Vol.16 Pt.1	p.3-48
"	1911	Statistical Review	ODM AR Vol.20 Pt.1	p.5-58
"	1912	Statistical Review	ODM AR Vol.21 Pt.1	p.5-54
"	1913	Statistical Review	ODM AR Vol.22 Pt.1	p.5-61
"	1914	Statistical Review of the Mineral Industry of Ontario for 1913	ODM AR Vol.23 Pt.1	p.1-51
"	1917	Statistical Review of the Mineral Industry of Ontario	ODM AR Vol.26	p.1-66
"	1919	Statistical Review of the Mineral Industry of Ontario for 1918	ODM AR Vol.28 Pt.1	p.1-95
Gittins, J.	1967	Abstract - Nepheline Rocks and Petrological Problems of the Haliburton-Bancroft Area, p.31-58 in Guidebook, Geology of Parts of Eastern Ontario and Western Quebec, The Geological Association of Canada with The Mineralogical Association of America, edited by S.E. Jenness		346 p.

SELECTED REFERENCES		Date	Author	Title	Reference	Map Scales and/or Report Pages
	Gordon, J.B. Colvane, A.C. & Vos, M.A.	1977		Mineral Resource Studies in the Pembroke-Renfrew Area, Southeastern Ontario p.191-192 in Summary Field Work, 1977, by the Geological Branch, edited by V.G. Milne, O.L. White, R.B. Barlow, and J.A. Robertson	OCS MP 75	208 p.
	Gordon, J.B., Rybak, U.C. & Robertson, J.A.	1981		Uranium and Thorium Deposits of Southern Ontario	OCS OFR 5311	665 p.
	Gouge, M.F.	1938		Limestone in Canada, Part IV, Ontario, Canada Department of Mines, Mines Branch	DEMR/CANMET #781	362 p.
	Griffith, J.W.	1967		The Uranium Industry its history, technology, and prospects, Mineral Resources Division, Department of Energy Mines and Resources	Mineral Report #12	p.240-243
	Guillet, G.R.	1969		Annual Report of Resident Geologists' Section, Geological Branch, 1968, Part 4, Southern Ontario	ODM MP 26	28 p.
	"	1970		Annual Report of Resident Geologists' Section, Geological Branch, 1969, Part 4, Southern Ontario	ODM MP 36	33 p.
	Hewitt, D.F.	1964		Building Stones of Ontario Part III Marble	ODM IMR 16	89 p.
	"	1965		Graphite in Ontario	ODM IMR 20	66 p.
	"	1967		Pegmatite Mineral Resources of Ontario	ODM IMR 21	83 p.
	"	1967		Phosphate in Ontario	ODM MRC 6	63 p.
	"	1967		Uranium and Thorium Deposits of Southern Ontario	ODM MRC 4	76 p.
	"	1968		Phlogopite Mica in Ontario	ODM MRC 8	85 p.

SELECTED REFERENCES			Reference	Map Scales and/or Report Pages
Author	Date	Title		
Hewitt, D.F.	1969	Geology and Scenery, Peterborough, Bancroft and Madoc Area (reprinted 1974)	ODM GB 3	114 p.
Hewitt, D.F. and Freeman, E.B.	1972	Rocks and Minerals of Ontario	ODM + Northern Affairs GC 13	145 p.
Hewitt, D.F.	1972	Talc in Ontario	ODM IMR 40	52 p.
Hurst, M.E.	1927	Arsenic - bearing Deposits in Canada	GSC Econ. Geol. Ser. No. 4	
Johnston, F.J.	1968	Molybdenum Deposits of Ontario	ODM MRC 7	98 p.
Kelly, T.J. and Riddell, G.S.	1962	Statistical Review of the Mineral Industry for 1960 combined with Mining Operations	ODM AR Vol.70	160 p.
"	1963	Statistical Review of the Mineral Industry for 1961 combined with Mining Operations	ODM AR Vol.71	170 p.
"	1964	Statistical Review of the Mineral Industry for 1962 combined with Mining Operations	ODM AR Vol.72	179 p.
Lang, A.H.	1951	Canadian Deposits of Uranium and Thorium	GSC Paper 51-10	
"	1952	Canadian Deposits of Uranium and Thorium	GSC Econ. Geol. Ser. No. 16	
Lindeman, E.	1913	Magnetite Occurrences along the Central Ontario Railway, Canada Department of Mines, Mines Branch	DEMR/CANMET #184	30 p.
Lindeman, E. and Bolton, L.L.	1917	Iron Ore Occurrences in Canada, Canada Department Mines, Mines Branch	DEMR/CANMET #217	

SELECTED REFERENCES				Map Scales and/or Report Pages
Author	Date	Title	Reference	
Little, H.W., Smith, E.E.N. and Barnes, F.O.	1972	Uranium Deposits of Canada, International Geological Congress, Guidebook for 24th Excursion C67		p.17-23
Logan, W.J. and Meyn, H.D.	1981	1980 Report of the Algonquin Regional Mines Co-ordinator p.123-127, in Annual Report of the Regional and Resident Geologists, 1980, edited by C.R. Kustra, Ontario Geological Survey	OGS MP 95	158 p.
Lumbers, S.B.	1967	Abstract - Geology and Mineral Deposits of the Bancroft-Madoc Area, p.13-29, in Guidebook, Geology of Parts of Eastern Ontario and Western Quebec, The Geological Association of Canada with the Mineralogical Association of America, edited by S.E. Jenness.		346 p.
Masson, S. and Gordon, J.B.	1979	Uranium Mineralization and Its Controls in the Immediate Bancroft Area p.190-191 in Summary of Field Work, 1979, by the Ontario Geological Survey, edited by V.G. Milne, O.L. White, R.B. Barlow, and C.R. Kustra	OGS MP 90	245 p.
Masson, S.L. and Gordon, J.B.	1980	Uranium Mineralization its Controls in the Bancroft Area, Southern Ontario p.175-178, in Summary of Field Work, 1980, by the Ontario Geological Survey, edited by V.G. Milne, O.L. White, R.B. Barlow, J.A. Robertston, and A.C. Colvane	OGS MP 96	201 p.
Matten, E.E.	1977	Statistical Report on the Mineral Industry of Ontario, 1971-1973	OMNR ASR Vol.4-6	294 p.
Matten, E.E.	1978	Statistical Report on the Mineral Industry of Ontario 1974	OMNR ASR Vol. 7	210 p.

SELECTED REFERENCES			Reference	Map Scales and/or Report Pages
Author	Date	Title		
McFarland, James Forbes	1970	Report of Cases in re Faraday Uranium Mines Ltd. Ontario Department of Mines and Northern Affairs, Mining Commissioner's Cases, Ontario	ODM + Northern Affairs Vol. 4 (1960-1969)	p.21-68 p.86-91
McMurray, V.A.	1977	Rockhound and Prospector. A Guide to Mineral Locations in Hastings County, Bancroft, Ontario		60 p.
Miller, W.G.	1899	Corundum and Other Minerals	ODM AR Vol. 8 Pt. 2	p. 205-240
Miller, W.G.	1900	Minerals of Ontario with Notes	ODM AR Vol. 9	p. 192-212
Ontario Department of Mines	1931	List of Mines, Quarries, and Metallurgical Works	ODM AR Vol. 40 Pt. 1	p. 51-62
"	1932	List of Mines, Metallurgical Works, and Quarries	ODM AR Vol. 41 Pt. 1	p. 51-62
"	1936	List of Mines, Quarries and Works, 1934	ODM AR Vol. 44 Pt. 1	p. 54-66
"	1938	Lists of Mines, Quarries, and Works, 1936	ODM AR Vol. 46 Pt. 1	p. 70-89
"	1939	List of Mines and Quarries and Works, 1937	ODM AR Vol. 47 Pt. 1	p. 60-79
"	1939	List of Mines, Quarries and Works, 1938	ODM AR Vol. 48 Pt. 1	p. 55-71
"	1941	List of Mines, Quarries and Works, 1939	ODM AR Vol. 49 Pt. 1	p. 55-71
"	1946	List of Mines, Quarries and Works, 1942	ODM AR Vol. 52 Pt. 1	p. 51-67
"	1946	Mines of Ontario in 1943	ODM AR Vol. 53 Pt. 1	p. 66-198
"	1948	List of Quarries and Works for structural Materials and Clay Products	ODM AR Vol. 54 Pt. 1	p. 56-62
"	1948	List of Quarries and Works for structural Materials and Clay Products	ODM AR Vol. 56 Pt. 1	p. 56-61

SELECTED REFERENCES			Reference	Map Scales and/or Report Pages
Author	Date	Title		
Ontario Department of Mines	1949	Mines of Ontario in 1946	ODM AR Vol.56 Pt.2	124 p.
"	1949	Mines of Ontario in 1947	ODM AR Vol.57 Pt.2	123 p.
"	1960	Mining Operations in 1958	ODM AR Vol.68 Pt.2	148 p.
"	1961	Mining Operations in 1959	ODM AR Vol.69 Pt.2	140 p.
Ontario Iron Ore Committee	1923	Report of the Iron Ore Committee, with Appendix	ODM	306 p.
Parks, W.A.	1912	The Building and Ornamental Stones of Canada: Vol. I, Ontario, Canada Department of Mines, Mines Branch	DEM/R/CANNET #100	376 p.
Peterson, H.	1978	Peterson Guide to Mineral Collecting, Bancroft Area, Second Edition, Bancroft, Ontario		61 p.
Reade, M.	1952	Mines of Ontario in 1952	ODM AR Vol.60 Pt.2	111 p.
Riddell, G.S.	1965	Statistical Review of the Mineral Industry and Mining Operations for 1963	ODM AR Vol.73	183 p.
"	1966	Statistical Review of the Mineral Industry and Mining Operations for 1964	ODM AR Vol.74	178 p.
"	1968	Statistical Review of the Mineral Industry and Mining Operations for 1965	ODM AR Vol.75	172 p.
"	1968	Statistical Review of the Mineral Industry and Mining Operations for 1966	ODM AR Vol.76	202 p.

SELECTED REFERENCES			Map Scales and/or Report Pages
Author	Date	Title	
Rimsaite, J.K.H.	1980	Mineralogy of radioactive occurrences in the Grenville Structural Province, Bancroft Area, Ontario; a progress report in Current Research Part A, Geological Survey of Canada	p.253-264
Rimsaite, J.	1982	Mineralogical and Petrochemical Properties of heterogeneous granitoid rocks from radioactive occurrences in the Grenville Structural Province, Ontario and Quebec, in Uranium in Granites, edited by Y.T. Maurice	p.19-30
Robertson, J.A.	1981	The Uranium Deposits of Ontario - Their Distribution and Classification	37 p.
Robinson, S.C.	1960	Note on the Interpretation of the U-Pb, Th-Pb and K-Ar ages in the Bancroft, Ontario Region; in Age Determinations of the Geological Survey of Canada Report 1, Isotopic ages, Geological Survey of Can.	p.41-51
Rogers, W.R.	1916	Statistical Review of the Mineral Industry of Ontario for 1915	p.1-51
Rogers, W.R. and Young, A.C.	1926	Statistical Review of Ontario's Mineral Industry in 1925	p.1-63
"	1928	Statistical Review	p.1-68
Rowe, R.B.	1958	Niobium (Columbium) Deposits of Canada	108 p.
Royal Commission	1890	Report of the Royal Commission on the Mineral Resources of Ontario and Measures for their Development published by Warwick and Sons, Toronto, Ontario	566 p.

GDIF FORM NO.9

SELECTED REFERENCES			Reference	Map Scales and/or Report Pages
Author	Date	Title		
Satterly, J. and Hewitt, D.F.	1955	Some Radioactive Mineral Occurrences in the Bancroft Area, NTS 31C/13, 31D/9 + 16, 31F/4	ODM GC 2 (Study 002)	
Satterly, J.	1956	Radioactive Mineral Occurrences in the Bancroft Area	ODM AR Vol. 65 Pt. 6	181 p.
Satterly, J.	1971	Some Radioactive Mineral Occurrences, Southern Ontario	ODM + Northern Affairs OFR 5057	85 p.
Satterly, J.	1977	A Catalogue of the Ontario Localities Represented by the Mineral Collection of the Royal Ontario Museum	OGS MP 70	464 p.
Schwertner, W.M. and Lumbers, S.B.	1980	Major Diapiric Structures in the Superior and Grenville Provinces of the Canadian Shield, in the Continental Crust and its mineral deposits, edited by D. Strangway, Geological Association of Canada Special Paper 20		p.149-180
Sergiades, A.O.	1968	Silver Cobalt Calcite Vein Deposits of Ontario	ODM MRC 10	498 p.
Sheppard, E.P.	1955	Geological Report on the Riddell Lake Group, Goldhawk Porcupine Mines Limited, Ontario Geological Survey Assessment Files Research Office, Toronto, Tech. File #63A.233 (Bancroft Resident Files 3 and 13.)		
Shklanka, R.	1968	Iron Deposits of Ontario	ODM MRC 11	489 p.
Skrecky, A.	1955	Report on the Geological Survey of Mining Claims EO 13103 to EO 13120 incl., Paraday Township, Hastings County, Eastern Ontario Mining Division, (Bancroft Resident Files #12)		

SELECTED REFERENCES		Date	Author	Title	Reference	Map Scales and/or Report Pages
	Spence, H.S.	1932		Feldspar, Canada Department of Mines, Mines Branch	DEMR/CANMET #731	146 p.
	Sutherland, T.F., Collins, E.A., McMillan, J.G. Bartlett, J.	1915		Mines of Ontario	ODM AR Vol.24 Pt.1	p. 94-170
	Sutherland, T.F., McMillan J.G., Bartlett, J. Webster, A.R.	1922		Mines of Ontario	ODM AR Vol.30 Pt.1	p. 63-158
	Sutherland, T.F., McMillan J.G., Bartlett, J. Webster, A.F., Cole, G.E.	1923		Mines of Ontario	ODM AR Vol.31 Pt.10	p.11-86
	Sutherland, T.F., McMillan J.G., Sinclair, D.G., Cole, G.E., Webster, A.R.	1926		Mines of Ontario in 1925	ODM AR Vol. 35 Pt.1	p.73-168
	Thomas, J.F.J.	1962		Quality of Industrial Waste and Surface Waters near Bancroft Ontario, Canadian Department of Mines and Technical Services, Mines Branch	Test Report 62-9	
	Traill, R.J.	1970		A Catalogue of Canadian Minerals	GSC Paper 69-45	649 p.
	Tremblay, M.	1941		Statistical Review of the Mineral Industry of Ontario for 1939	ODM AR Vol.49 Pt.1	p.1-54
	Trusler, J.R.	1975		1974 Report of the Algonquin Regional Geologist p.195-204 in Annual Report of the Regional and Resident Geologists 1974, Ontario Division of Mines	ODM MP 60	241 p.

SELECTED REFERENCES				Map Scales and/or Report Pages
Author	Date	Title	Reference	
Trusler, J.R.	1976	1975 Report of the Algonquin Regional Geologist p.119-123 in Annual Report of the Regional and Resident Geologists, 1975, edited by C.R. Kustra	ODM MP 64	146 p.
Trusler, J.R. and Wallace, K.E.	1977	1976 Report of the Algonquin Regional Geologist p.115-122 in Annual Report of the Regional and Resident Geologist, 1976, edited by C.R. Kustra	OGS MP 71	142 p.
Trusler, J.R. and Villard, D.J.	1978	1977 Report of the Algonquin Regional Geologist p.100-108 in Annual Report of the Regional and Resident Geologists 1977, edited by C.R. Kustra	OGS MP 78	121 p.
Trusler, J.R. and Villard, D.J.	1979	1978 Report of Algonquin Regional Geologist p.108-115 in Annual Report of the Regional and Resident Geologists, 1978, edited by C.R. Kustra	OGS MP 84	135 p.
Villard, D.J.	1980	1979 Report of the Algonquin Regional Mineral Resource Co-ordinator p.117-122 in Annual Report of the Regional and Resident Geologists, 1979, edited by C.R. Kustra	OGS MP 91	143 p.
Villard, D.J. and Meyn, H.D.	1982	1981 Report of the Algonquin Region p.148-156 in Annual Report of the Regional and Resident Geologists, 1981, edited by C.R. Kustra	OGS MP 101	184 p.
Vos, M.A.	1976	Amethyst Deposits of Ontario	ODM CB No.5	99 p.
Vos, M.A.	1977	Preliminary Survey, Marble of the Grenville Geological Province, Eastern Ontario	ODM OFR 5229	19 p.
Vos, M.A. and Storey, C.C.	1978	Industrial Mineral p.185-188 in Summary of Field Work, 1978, by the Ontario Geological Survey, edited by V.G. Milne, O.L. White, R.B. Barlow, and J.A. Robertson	OGS MP 82	235 p.

SELECTED REFERENCES		Date	Author	Reference		Map Scales and/or Report Pages
				Title		
	Williams, I.	1950	Mines of Ontario in 1948	ODM AR Vol. 58 Pt. 2	111 p.	
	Williams, I.	1951	Mines of Ontario in 1949	ODM AR Vol. 59 Pt. 2	109 p.	
	Wells, J.W.	1902	Arsenic in Ontario	ODM AR Vol. 11	p. 101-102	
	Young, A.C.	1938	Statistical Review of the Mineral Industry of Ontario for 1936	ODM AR Vol. 46 Pt. 1	p. 1-69	
	Barnett, P.J.	1979	<u>SURFICIAL, PLEISTOCENE, TERRAIN ENGINEERING</u> Quaternary Geology of the Bancroft (31F/4) Area, Hastings, Renfrew, Lennox and Addington Counties p. 136-137 in Summary of Field Work 1979, by the Ontario Geological Survey, edited by V.G. Milne, O.L. White, R.B. Barlow, and C.R. Kustra	OGS MP 90	245 p.	
	Barnett, P.J.	1983	Quaternary Geology of the Bancroft Area, 4 tables, 15 figures, 14 photos, and 2 Preliminary Maps	OGS OFR 5428 OGS Map P. 2396 OGS Map P. 2397	124 p. 1:50 000 1:50 000	
	Barnett, P.J. and Leyland, J.G.	1980	Quaternary Geology of the Bancroft Area, Southern Ontario, Geological Series. Geology 1978, 1979.	OGS Map P. 2376	1:50 000	
	Bostock, H.S.	1969	Physiographic Regions of Canada	GSC Map 1254 A	1:5 000 000	
	Chapman, L.J.	1975	The Physiography of the Georgian Bay-Ottawa Valley Area of Southern Ontario	ODM GR 128 ODM Map 2228	33 p. 1" = 4 miles	

GDIF FORM NO. 9

		SELECTED REFERENCES		Reference	Map Scales and/or Report Pages
Finamore, P.F.	1980	Quaternary Geology of the Coe Hill Area (31C/13) Hastings, Peterborough, and Haliburton Counties, Southern Ontario, p.117-118 in Summary of Field Work, 1980, by the Ontario Geological Survey, edited By V.G. Milne, O.L. White, R.B. Barlow, J.A. Robertson, and A.C. Colvine	OCS MP 96	201 p.	
Finamore, P.F. and Courtney, S.J.	1982	Quaternary Geology of the Coe Hill Area, Southern Ontario, Geological Series. Geology 1980.	OCS Map P.2536	1:50 000	
Mollard, D.G.	1980	Southern Ontario Engineering Geology Terrain Study Maps: Bancroft and Haliburton	OCS OFR 5317 4 maps	1:100 000	
<u>TOPOGRAPHIC MAPS</u>					
Department of Energy, Mines and Resources - Surveys and Mapping Branch	1975	Bancroft, Ontario (31F/4)		1:50 000	
"	1978	Coe Hill, Ontario (31C/13)		1:50 000	
"	1975	Wilberforce, Ontario (31E/1)		1:50 000	
"	1964	Bancroft, Ontario (31F/SW)		1:125 000	
"	1965	Haliburton, Ontario (31E/SE)		1:125 000	
"	1977	Huntsville, Ontario (31E)		1:250 000	
"	1975	Kingston (31C)		1:250 000	
"	1977	Pembroke, Ontario-Quebec (31F)		1:250 000	

SELECTED REFERENCES		Date	Author	Title	Reference	Map Scales and/or Report Pages
				<u>GEOCHEMICAL</u>		
	Ontario Geological Survey - Geological Survey of Canada	1977		Geochemical Reconnaissance in Lake Sediments, Southern Ontario (NTS 31C). Data Gathered 1976.	OCS OFR 5227 GSC OF #405	1:250 000 1:250 000
	"	1977		Geochemical Reconnaissance in Lake Sediments, Southern Ontario (NTS 31F). Data Gathered 1976.	OCS OFR 5228 GSC OF #406	1:250 000
				<u>GEOPHYSICAL MAPS</u>		
	Geological Survey of Canada	1950		Bancroft, Hastings, Renfrew, Lennox & Addington Counties, Ontario, Aeromagnetic Map (revised 1957)	GSC Map 15 G	1:50 000
	"	1950		Coe Hill, Hastings, Peterborough and Haliburton Counties, Aeromagnetic Map (revised 1957)	GSC Map 16 G	1" = 1 mile
	"	1953		Wilberforce, Haliburton and Hastings Counties, Ontario, Aeromagnetic Map	GSC Map 110 G	1" = 1 mile
	"	1981		Huntsville, Ontario, Aeromagnetic Map	GSC Map 7058G	1:250 000
	"	1981		Kingston, Ontario Aeromagnetic Map	GSC Map 7052G	1:250 000
	"	1981		Pembroke, Ontario-Quebec, Aeromagnetic Map	GSC Map 7057G	1:250 000
	"	1976		Uranium Reconnaissance Program, Airborne Gamma-Ray Spectrometry Data, Pembroke (31F) Ontario-Quebec	GSC OF #331 (35631G)	1:250 000
	"	1977		Airborne Radioactivity Maps and Profiles, Kingston Ontario, (31C), Geophysical Series. Survey 1976.	GSC OF #428 (35331G)	1:250 000

GDIF FORM NO. 9

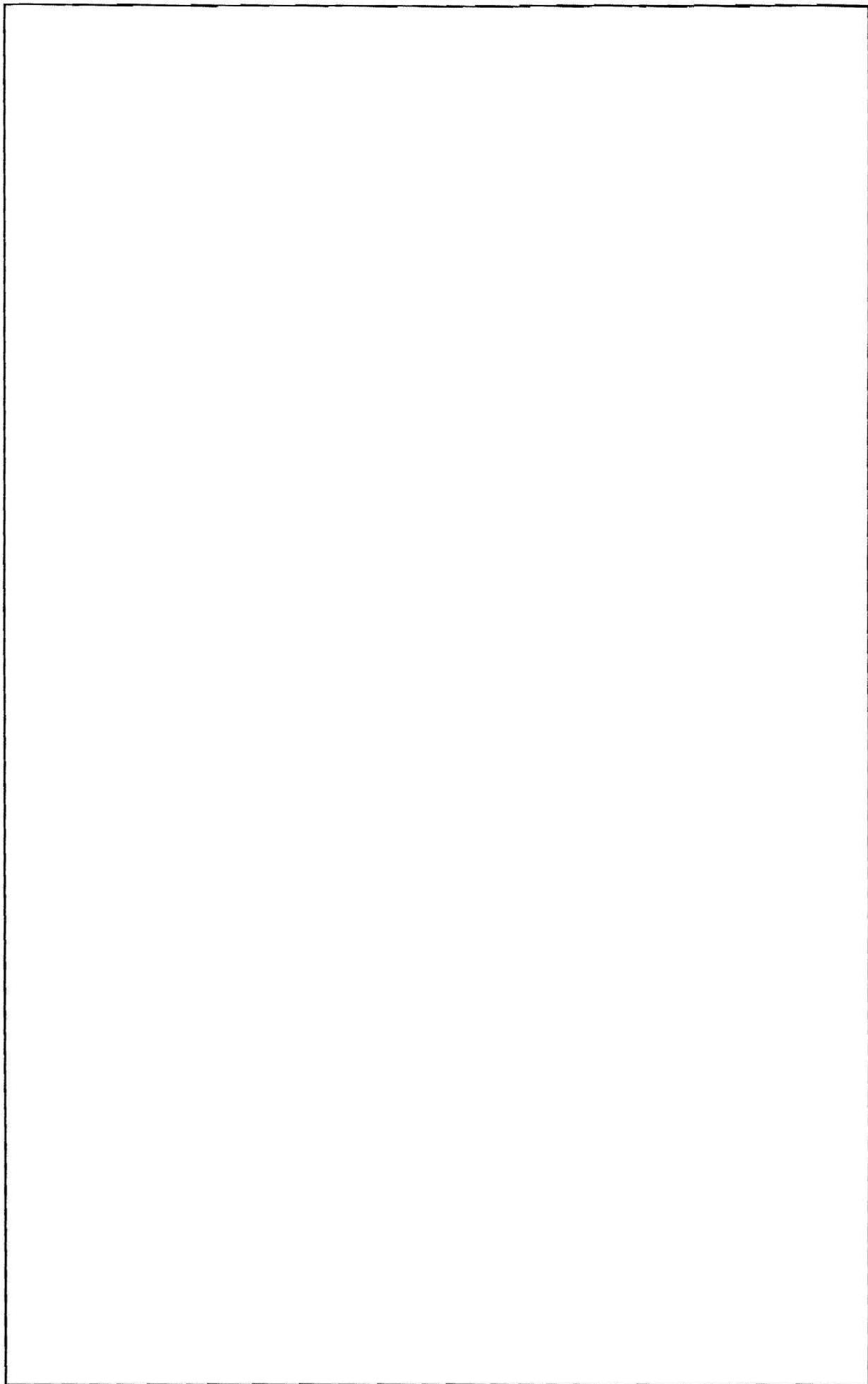
SELECTED REFERENCES		Date	Author	Reference		Map Scales and/or Report Pages
				Title		
Geological Survey of Canada	1971		Seven radiometric maps (1:50,000) and profiles for 61 flight lines (1:250,000) of an experimental high-sensitivity gamma-ray spectrometer survey of the Bancroft Area, Ontario (31C/13, D/16, E/1, F/4)	GSC OF #45	1:1 291 806	
"	1981		Eastern Ontario - Western Quebec Region, Magnetic Anomaly Map Series (Residual Total Field)	GSC Map 1562A		
Ontario Geological Survey (ODM/OGS) and Geological Survey of Canada (GSC)	1978		Airborne Gamma-Ray Spectrometric Maps and Profiles Huntsville, Ontario, Geophysical Series.	OGS Maps P.1727-P.1765 GSC Map 35531G	1:250 000	
"	1972		Great Lakes - Ottawa River Sheet, Algoma, Sudbury, Timiskaming, Nipissing, and Manitoulin Districts and Southern Ontario, Aeromagnetic Compilation Map	ODM/GSC Map P.800	1" = 16 miles	
<u>MINERAL POTENTIAL MAPS</u>						
Robertson, J.A., Bright, E.G., Gordon, J.B., Springer, J.S. and MacDonald, C.A.	1979		Uranium Mineral Potential Charts for Parts of Southern Ontario; Charts A to I inclusive. Compilation 1977 & 1978.	OGS OFR 5260 Chart F	1" = 2 miles	
Springer, Janet	1978		Ontario Mineral Potential, Huntsville Sheet, Districts of Parry Sound, Nipissing, Muskoka, Counties of Haliburton and Hastings, Mineral Deposits Series. Compilation 1976.	OGS Map P.1508	1:250 000	

SELECTED REFERENCES			Reference	Map Scales and/or Report Pages
Author	Date	Title		
Darnley, A.G.	1972	Airborne Gamma-Ray Survey Techniques Uranium Prospecting Handbook; Institute of Mining and Metallurgy		p.197-203
Doane, Kenneth T.	1955	Uranium Mineralization in the Bancroft Area; B.Sc. Thesis, University of Western Ontario		
Giblin, P.E.	1956	Geology and Mineralogy of the Basin Property, Faraday Township; M.A. Sc. Thesis University of Toronto		
Gittins, J.	1961	Nepheleinization in the Haliburton-Bancroft District, Ontario, Canada; Journal Geology Vol.69		p.291-308
Gittins, J. and Miller, R.	1978	Alkalic Rocks of the Haliburton-Bancroft Area p. 213-219 in Toronto '78 Fieldtrips, Guidebook, Joint Annual Meeting of Geological Association of Canada and the Mineralogical Association of Canada, edited by A.L. Currie and W.O. Mackasey		361 p.
Gummer, W.K. and Burr, S.V.	1943	The Nepheleinized Paragneisses of the Bancroft Region, Ontario; Science Vol.97 March 26, 1943		p.286-287
"	1964	Nepheleinized Paragneisses in the Bancroft Area, Ontario; Journal Geology Vol.54 #3		p.137-168
Little, H.W.	1969	Anhydrite-pegmatite uranium ore at Bancroft Ontario; Economic Geology, Vol.64		p.691-693
Lumbers, S.B.	1967	Stratigraphy, plutonism in the Ottawa River remnant in the Bancroft-Madoc Area of the Grenville Province of southeastern Ontario, Canada; unpub. Ph.D. Thesis, Princeton University, Princeton, New Jersey		331 p.

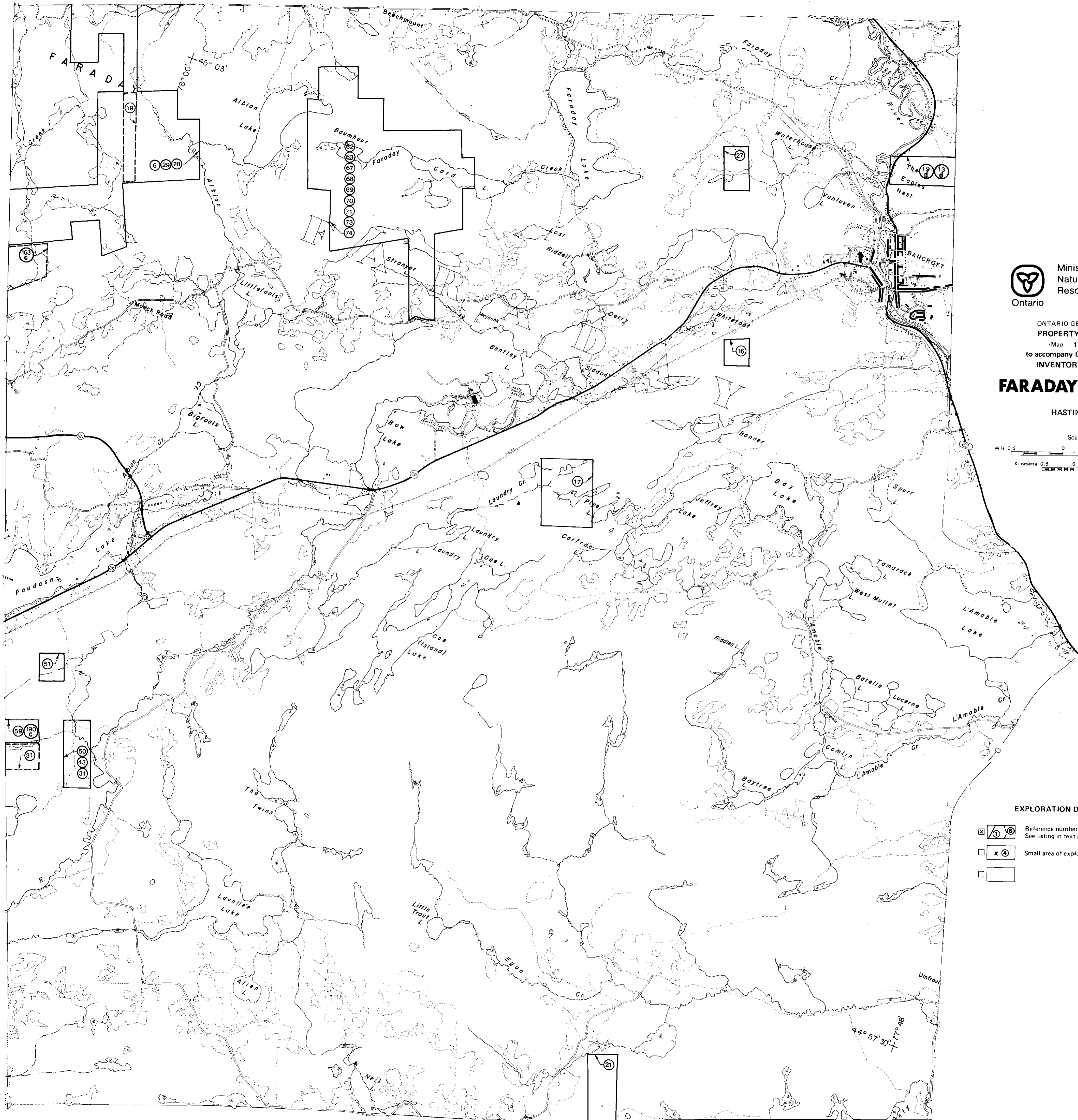
G.D.F. FORM NO.9


NOTES AND ADDENDA

[Empty space for notes and addenda]



FARADAY TOWNSHIP

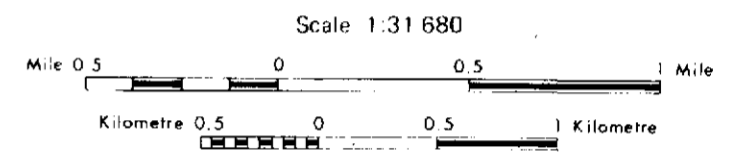



 Ministry of Natural Resources
 Hon. Alan W. Pope, Minister
 John R. Sloan, Deputy Minister

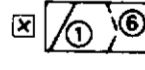
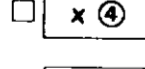
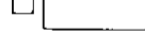
ONTARIO GEOLOGICAL SURVEY
 PROPERTY LOCATION MAP
 (Map 1 of 3)
 to accompany GEOLOGICAL DATA
 INVENTORY FOLIO 125

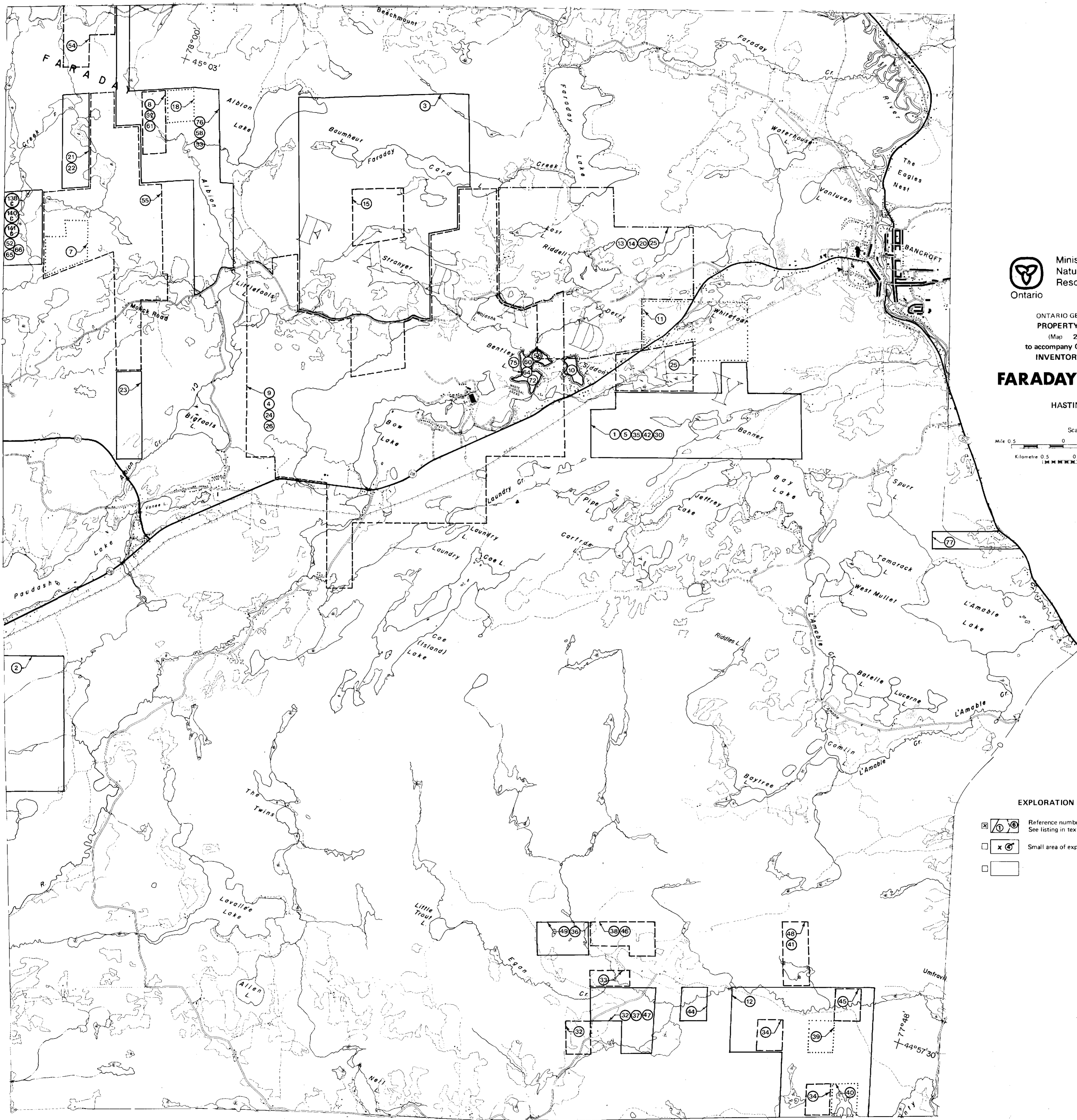
FARADAY TOWNSHIP

HASTINGS COUNTY



EXPLORATION DATA FILE AREAS

- 
 Reference number is always inside work area outlined. See listing in text pages.
- 
 Small area of exploration data.
- 

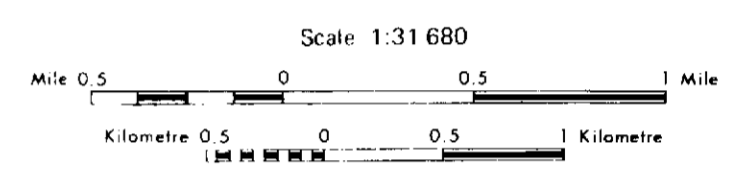



 Ministry of Natural Resources
 Hon. Alan W. Pope, Minister
 John R. Sloan, Deputy Minister

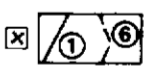
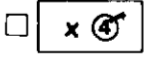

ONTARIO GEOLOGICAL SURVEY
 PROPERTY LOCATION MAP
 (Map 2 of 3)
 to accompany GEOLOGICAL DATA
 INVENTORY FOLIO 125

FARADAY TOWNSHIP

HASTINGS COUNTY



EXPLORATION DATA FILE AREAS

- 
 Reference number is always inside work area outlined. See listing in text pages.
- 
 Small area of exploration data.
- 

TYPES OF DATA SHOWN ON THIS MAP

GEOCHEMICAL AND GEOCHRONOLOGICAL DATA

- Geochemical sample site, with reference number
- Area of geochemical sampling, with reference number
- Age dating material sampling site, with reference number
-

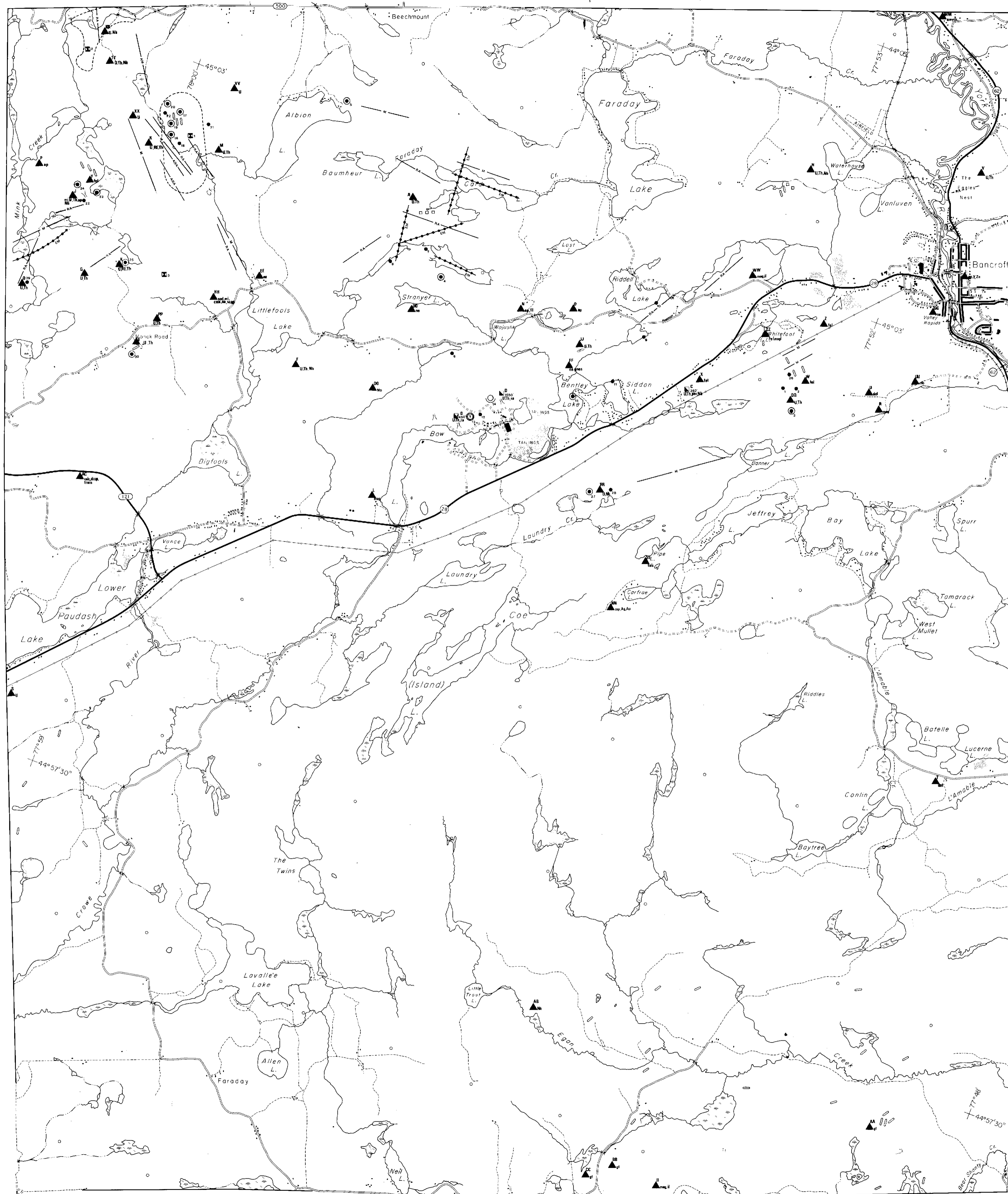
GEOPHYSICAL ANOMALIES

- Airborne Magnetometer Anomaly
- Airborne Electromagnetometer Anomaly Length of anomaly along flight line
- Airborne Electromagnetometer Anomaly Location of anomaly along flight line
- Airborne Electromagnetometer Anomaly Conductor Axis: definite, probable, possible
- Airborne Radiometric Anomaly
- Ground Magnetometer Anomaly
- Ground Electromagnetometer Anomaly (VL - Vertical Loop; HL - Horizontal Loop; VLF - Very low freq; Turam; JEM - Crone EM - 16)
- Ground Radiometric Anomaly
- Induced Polarization Anomaly
- Self Potential Anomaly
- Audio-frequency magnetometer anomaly (total intensity)
- Resistivity Anomaly
- Gravity Anomaly
-

MISCELLANEOUS DATA

- Trenching, pit
- Adit
- Open pit
- Rock quarry
- Sand and/or gravel pit
-

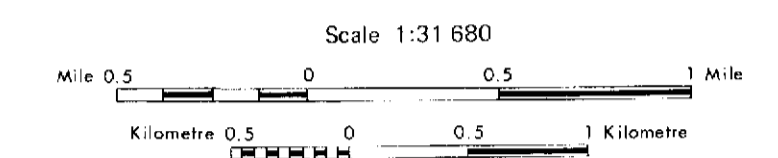
NOTE: Consult the text that accompanies this map for pertinent lists of data, references, and abbreviations.



Ministry of Natural Resources
Hon. Alan W. Pope, Minister
John R. Sloan, Deputy Minister

ONTARIO GEOLOGICAL SURVEY
Map to Accompany GEOLOGICAL DATA
INVENTORY FOLIO 125
FARADAY TOWNSHIP

HASTINGS COUNTY



GEOLOGICAL AND MINING SYMBOLS
TYPES OF DATA SHOWN ON THIS MAP (Map 3 of 3)

MINERAL OCCURRENCES

- Mineral occurrence at surface, with reference letter
- Mineral occurrence with shaft, depth given with reference letter
- Mineral occurrence reported but exact location uncertain, with reference letter
- Mineralized float with reference letter
-

DRILL HOLES

- Location of single drill hole, with reference number
- Location of closely spaced group of drill holes, with reference number
- Drill hole, exact location uncertain, with reference number
- Property with underground drill holes in this general area, with reference number
- Property with drill holes which have not been plotted on map, with reference number
- Reverse Circulation Drill Hole; Churn drilling, with reference number
-