

## THESE TERMS GOVERN YOUR USE OF THIS PRODUCT

***Your use of this electronic information product (“EIP”), and the digital data files contained on it (the “Content”), is governed by the terms set out on this page (“Terms of Use”). By opening the EIP and viewing the Content, you (the “User”) have accepted, and have agreed to be bound by, the Terms of Use.***

**EIP and Content:** This EIP and Content is offered by the Province of Ontario’s *Ministry of Northern Development, Mines and Forestry* (MNDMF) as a public service, on an “as-is” basis. Recommendations and statements of opinions expressed are those of the author or authors and are not to be construed as statement of government policy. You are solely responsible for your use of the EIP and its Content. You should not rely on the Content for legal advice nor as authoritative in your particular circumstances. Users should verify the accuracy and applicability of any Content before acting on it. MNDMF does not guarantee, or make any warranty express or implied, that the Content is current, accurate, complete or reliable or that the EIP is free from viruses or other harmful components. MNDMF is not responsible for any damage however caused, which results, directly or indirectly, from your use of the EIP or the Content. MNDMF assumes no legal liability or responsibility for the EIP or the Content whatsoever.

**Links to Other Web Sites:** This EIP or the Content may contain links, to Web sites that are not operated by MNDMF. Linked Web sites may not be available in French. MNDMF neither endorses nor assumes any responsibility for the safety, accuracy or availability of linked Web sites or the information contained on them. The linked Web sites, their operation and content are the responsibility of the person or entity for which they were created or maintained (the “Owner”). Both your use of a linked Web site, and your right to use or reproduce information or materials from a linked Web site, are subject to the terms of use governing that particular Web site. Any comments or inquiries regarding a linked Web site must be directed to its Owner.

**Copyright:** Canadian and international intellectual property laws protect the EIP and the Content. Unless otherwise indicated, copyright is held by the Queen’s Printer for Ontario.

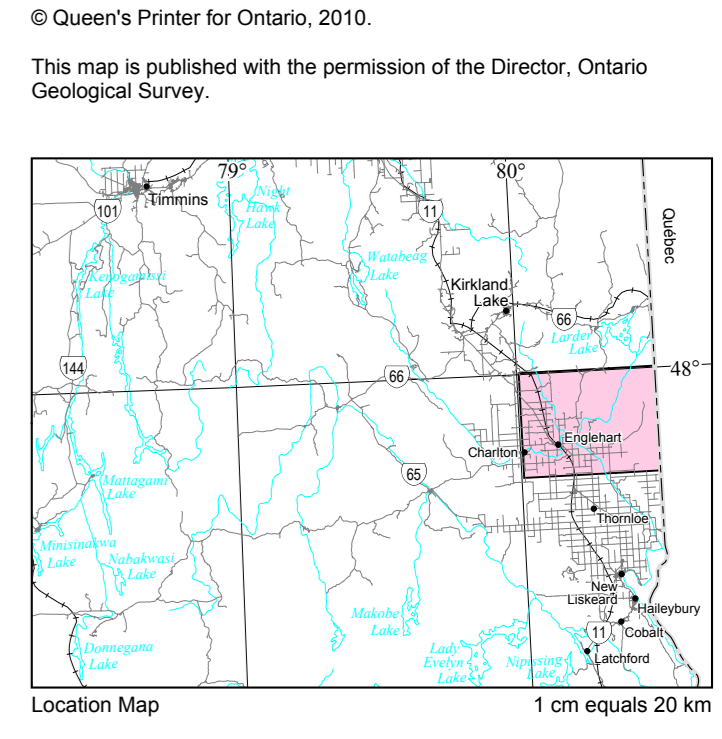
It is recommended that reference to the Content be made in the following form:

Gao, C. 2010. Quaternary geology of the Englehart area, northern Ontario; Ontario Geological Survey, Map 2661, scale 1:50 000.

**Use and Reproduction of Content:** The EIP and the Content may be used and reproduced only in accordance with applicable intellectual property laws. *Non-commercial* use of unsubstantial excerpts of the Content is permitted provided that appropriate credit is given and Crown copyright is acknowledged. Any substantial reproduction of the Content or any *commercial* use of all or part of the Content is prohibited without the prior written permission of MNDMF. Substantial reproduction includes the reproduction of any illustration or figure, such as, but not limited to graphs, charts and maps. Commercial use includes commercial distribution of the Content, the reproduction of multiple copies of the Content for any purpose whether or not commercial, use of the Content in commercial publications, and the creation of value-added products using the Content.

### Contact:

FOR FURTHER INFORMATION ON	PLEASE CONTACT:	BY TELEPHONE:	BY E-MAIL:
The Reproduction of the EIP or Content	MNDMF Publication Services	Local: (705) 670-5691 Toll Free: 1-888-415-9845, ext. 5691 (inside Canada, United States)	<a href="mailto:Pubsales.ndm@ontario.ca">Pubsales.ndm@ontario.ca</a>
The Purchase of MNDMF Publications	MNDMF Publication Sales	Local: (705) 670-5691 Toll Free: 1-888-415-9845, ext. 5691 (inside Canada, United States)	<a href="mailto:Pubsales.ndm@ontario.ca">Pubsales.ndm@ontario.ca</a>
Crown Copyright	Queen’s Printer	Local: (416) 326-2678 Toll Free: 1-800-668-9938 (inside Canada, United States)	<a href="mailto:Copyright@gov.on.ca">Copyright@gov.on.ca</a>



SOURCES OF INFORMATION

Base map information derived from Ontario Land Information Warehouse, Land Information Ontario, Ontario Ministry of Natural Resources, scale 1:50 000.

Airphotos from the Ontario Ministry of Natural Resources, issued 1958-1989.

Mapping conducted using UTM co-ordinates in North American Datum 1983 (NAD83), Zone 17.

Information on kimberlite locations provided by G. Grabowski (Kirkland Lake Resident Geologist Office, personal communication, 2009).

Supplementary data: King, R.C.F. and Morton, J.D. 1979. Quaternary geology of the Englehart area, District of Timiskaming, Ontario Geological Survey, Preliminary Map P.2252, scale 1:50 000.

Magnetic declination approximately 11°48' W in 2010 for the centre of the map area.

Contour interval = 10 m.  
Geology not tied to surveyed lines.

Metric Conversion Factor: 1 foot = 0.3048 m.

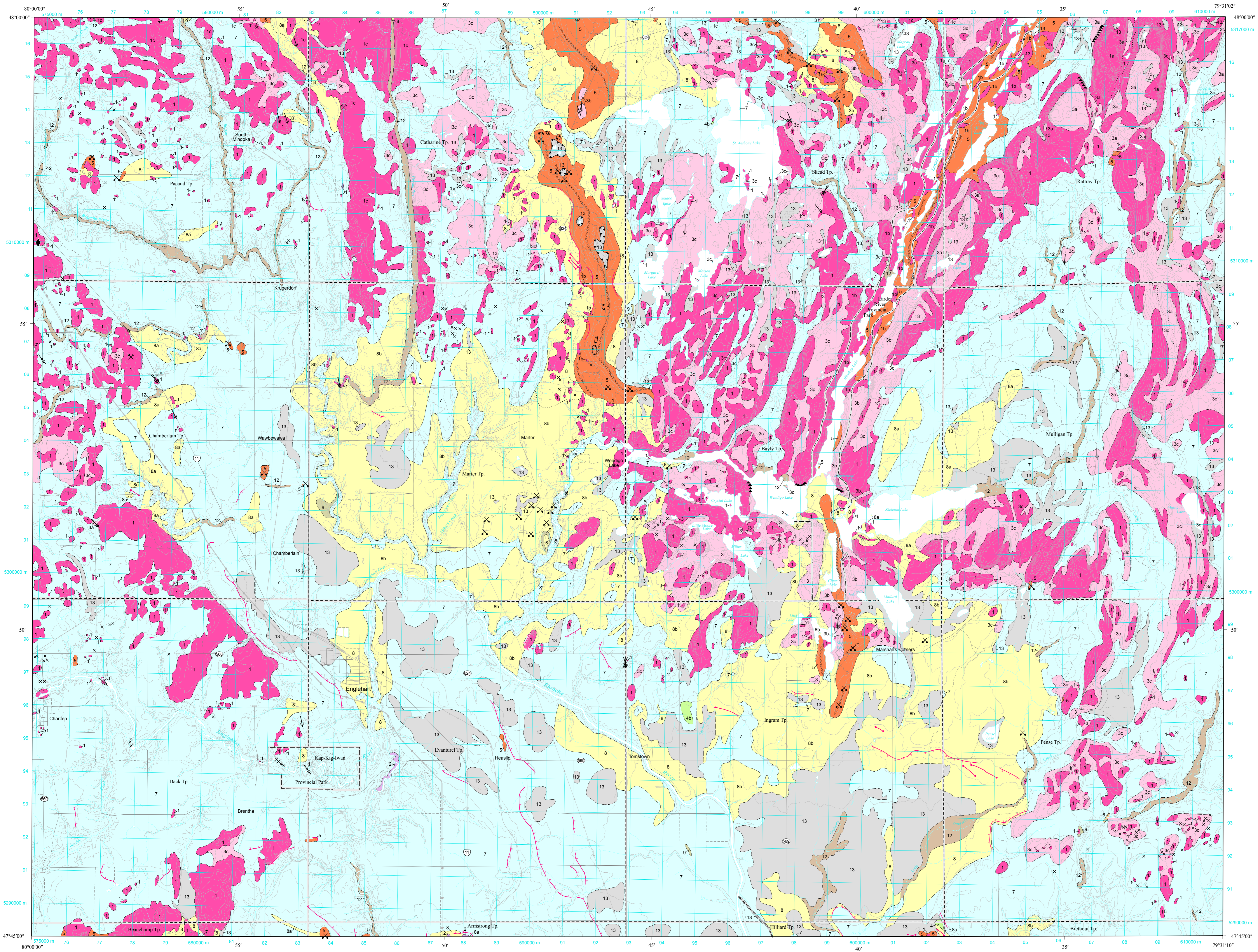
CREDITS

Quaternary geology mapping by C. Gao and assistants, 2007.  
Digital drafting by S. Evers.  
Cartographic production by A. Evers.  
Edited by M.G. Easton.

To enable the rapid dissemination of information, this map has not received a technical edit. Discrepancies may occur for which the Ontario Ministry of Northern Development, Mines and Forestry does not assume liability. Users should verify critical information.

Issued 2010.  
Information from this publication may be quoted if credit is given. It is recommended that reference to this map be made in the following form:  
Gao, C. 2010. Quaternary geology of the Englehart area, northern Ontario, Ontario Geological Survey, Map 2661, scale 1:50 000.

Users of OGS products are encouraged to contact those Aboriginal communities whose traditional territories may be located in the mineral exploration area to discuss their project.



LEGEND

PHANEROZOIC

CENOZOIC

QUATERNARY

RECENT

- 14 **Man-Made Deposits:** Mine tailings, landfills or other man-made deposits
- 13 **Organic and Swamp Deposits:** Peat, mud, muck
- 12 **Alluvium Deposits:** Silt, sand, may contain gravel and organic remains
- 11 **Beach Deposits:** Sand, gravel, cobbles
- 10 **Eolian Deposits:** Fine- to medium-textured sand

PLEISTOCENE

- 9 **Fluvial Deposits:** Sand, gravel
- 8 **Glaciolacustrine Coarse-Textured Deposits:** Sand, minor gravel  
8a Beach or nearshore deposits  
8b Deltaic deposits
- 7 **Glaciolacustrine Fine-Textured Deposits:** Clay, silt, minor sand, often rhythmically laminated or varved, may have a thin cover of swamp and alluvium deposits
- 6 **Glaciofluvial Deposits:** Sand, gravel, cobbles in outwash fans, plains or valley trains
- 5 **Glaciofluvial Ice-Contact Stratified Deposits:** Sand, gravel, cobbles in eskers, kames, crevasse fills and moanans, may contain boulders and minor silt and clay
- 4 **Till Deposits:** Silty silt to silty sand containing gravel, cobbles and boulders  
4b Slony to bouldery, sand to silty sand textured till
- 3 **Bedrock-Drift Complex:** Extensive, but discontinuous, thin drift cover, sufficiently thick in places to subdue the bedrock topography  
3a Till cover  
3b Glaciofluvial cover  
3c Glaciolacustrine cover

PALEOZOIC

- 2 **Bedrock:** Dolostone, limestone, sandstone, mudstone, shale

PRECAMBRIAN

- 1 **Bedrock:** Undifferentiated igneous, metamorphic or sedimentary rocks; exposed or covered by a thin veneer of drift deposits  
1a Thin, discontinuous till cover  
1b Thin, discontinuous glaciofluvial cover  
1c Thin, discontinuous glaciolacustrine cover

SYMBOLS

- X Small bedrock outcrop
- Geological contact (observed, interpreted)
- Geological contact (gradational)
- Esker ridge
- Ice-contact slope
- Kettle
- Abandoned channel
- Shore bluff, wave-cut scarp
- Beach ridge
- Talus, scree
- Glacial striae (direction of ice movement known or assumed)
- Sand or gravel pit
- Quarry
- Kimberlite pipe
- Administrative boundary (township, park)
- Roads (primary, secondary, tertiary)
- Railroad, utilities
- Topographic contour