

THESE TERMS GOVERN YOUR USE OF THIS PRODUCT

Your use of this electronic information product (“EIP”), and the digital data files contained on it (the “Content”), is governed by the terms set out on this page (“Terms of Use”). By opening the EIP and viewing the Content , you (the “User”) have accepted, and have agreed to be bound by, the Terms of Use.

EIP and Content: This EIP and Content is offered by the Province of Ontario’s *Ministry of Northern Development, Mines and Forestry* (MNDMF) as a public service, on an “as-is” basis. Recommendations and statements of opinions expressed are those of the author or authors and are not to be construed as statement of government policy. You are solely responsible for your use of the EIP and its Content. You should not rely on the Content for legal advice nor as authoritative in your particular circumstances. Users should verify the accuracy and applicability of any Content before acting on it. MNDMF does not guarantee, or make any warranty express or implied, that the Content is current, accurate, complete or reliable or that the EIP is free from viruses or other harmful components. MNDMF is not responsible for any damage however caused, which results, directly or indirectly, from your use of the EIP or the Content. MNDMF assumes no legal liability or responsibility for the EIP or the Content whatsoever.

Links to Other Web Sites: This EIP or the Content may contain links, to Web sites that are not operated by MNDMF. Linked Web sites may not be available in French. MNDMF neither endorses nor assumes any responsibility for the safety, accuracy or availability of linked Web sites or the information contained on them. The linked Web sites, their operation and content are the responsibility of the person or entity for which they were created or maintained (the “Owner”). Both your use of a linked Web site, and your right to use or reproduce information or materials from a linked Web site, are subject to the terms of use governing that particular Web site. Any comments or inquiries regarding a linked Web site must be directed to its Owner.

Copyright: Canadian and international intellectual property laws protect the EIP and the Content. Unless otherwise indicated, copyright is held by the Queen’s Printer for Ontario.

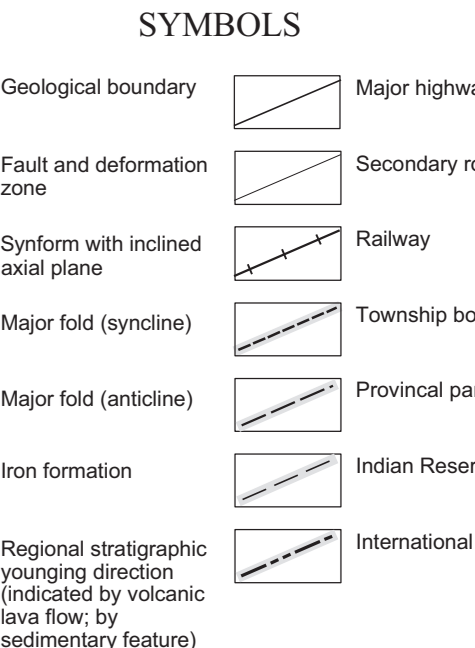
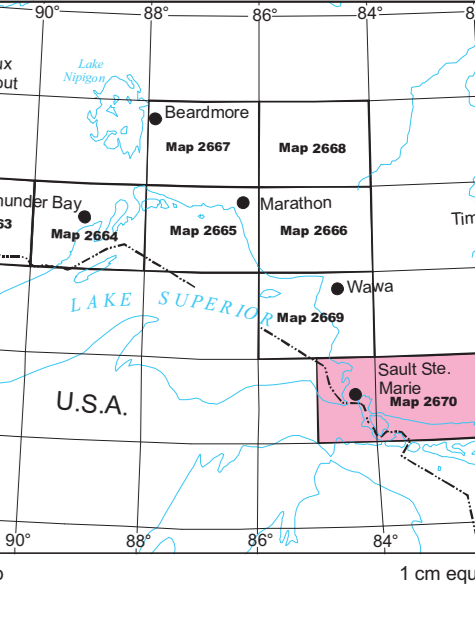
It is recommended that reference to the Content be made in the following form:

Johns, G.W., McIlraith, S., and Muir, T.L. 2003. Precambrian geology compilation map—Sault Ste. Marie—Blind River sheet; Ontario Geological Survey, Map 2670, scale 1:250 000.

Use and Reproduction of Content: The EIP and the Content may be used and reproduced only in accordance with applicable intellectual property laws. *Non-commercial* use of unsubstantial excerpts of the Content is permitted provided that appropriate credit is given and Crown copyright is acknowledged. Any substantial reproduction of the Content or any *commercial* use of all or part of the Content is prohibited without the prior written permission of MNDMF. Substantial reproduction includes the reproduction of any illustration or figure, such as, but not limited to graphs, charts and maps. Commercial use includes commercial distribution of the Content, the reproduction of multiple copies of the Content for any purpose whether or not commercial, use of the Content in commercial publications, and the creation of value-added products using the Content.

Contact:

FOR FURTHER INFORMATION ON	PLEASE CONTACT:	BY TELEPHONE:	BY E-MAIL:
The Reproduction of the EIP or Content	MNDMF Publication Services	Local: (705) 670-5691 Toll Free: 1-888-415-9845, ext. 5691 (inside Canada, United States)	Pubsales.ndm@ontario.ca
The Purchase of MNDMF Publications	MNDMF Publication Sales	Local: (705) 670-5691 Toll Free: 1-888-415-9845, ext. 5691 (inside Canada, United States)	Pubsales.ndm@ontario.ca
Crown Copyright	Queen’s Printer	Local: (416) 326-2678 Toll Free: 1-800-668-9938 (inside Canada, United States)	Copyright@gov.on.ca



ABBREVIATIONS table listing symbols for various rock types and units.

SOURCES OF INFORMATION

Map information derived from the Ontario Basic Mapping Program, Survey, Mapping and Planning Branch, Ontario Ministry of Natural Resources and Forestry, Ontario Geological Survey, 1985, scale 1:250,000.

CREDITS

Compiler by G.W. Johns, S. Molnar and T.L. Main. Base map and geophysical compilation by A. Rodd and S. Molnar. Drafting by S. Molnar.

MINERAL DEPOSIT INVENTORY*

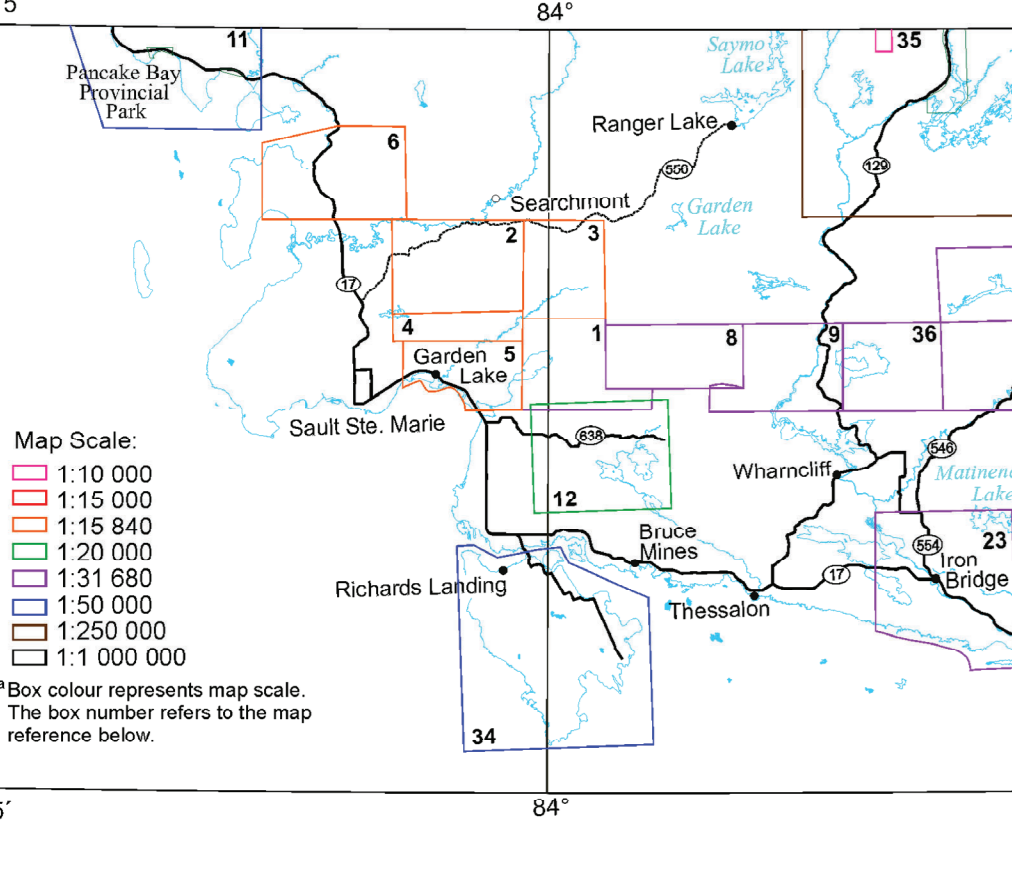
- Commodity key: Au (Ag + Cu + Mo + Zn + Bi + Fe + W), Ag + Cu + Ni + Co + Cr + Zn + Au + W, etc.

- Status: Mine/Quarry, Prospect, Occurrence.

- Deposit Types: Mafic to Ultramafic Volcanic/Intrusion Associated, Vein/Replacement Deposits, etc.

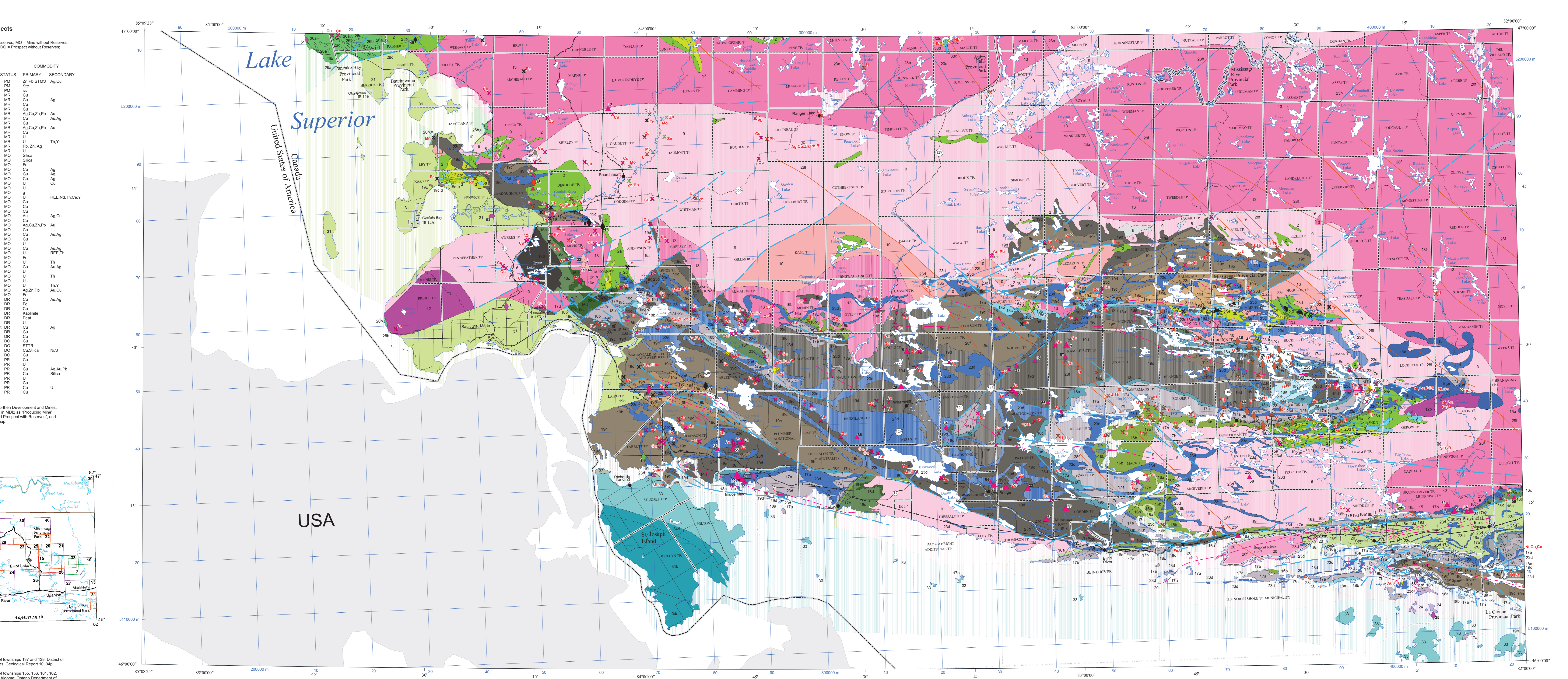
- Classification Example: diamond symbol = vein/replacement, green colour = zinc, 1 = Jarvis Lake Deposit.

LITHOLOGICAL RELIABILITY DIAGRAM*

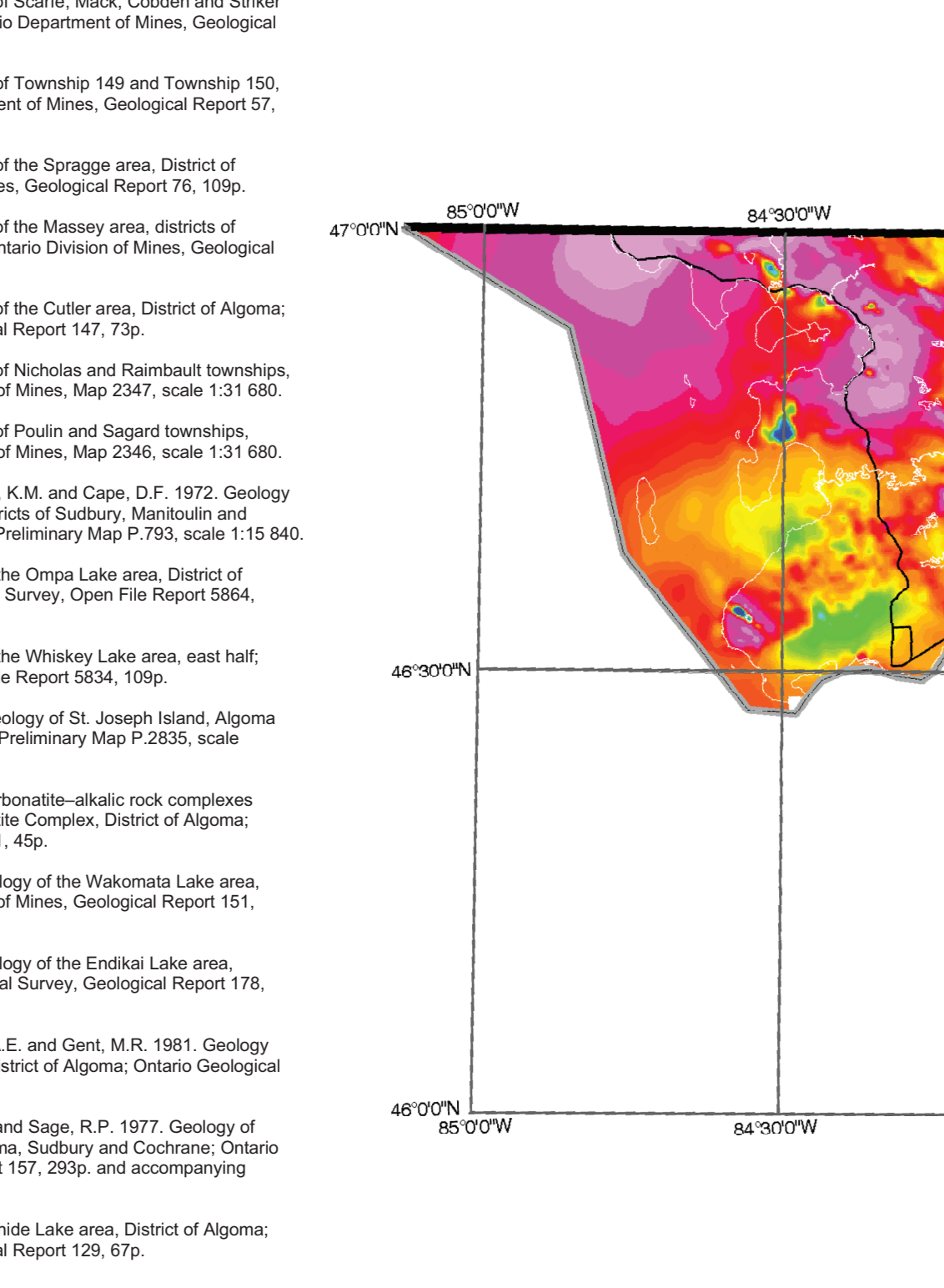


MAP REFERENCES

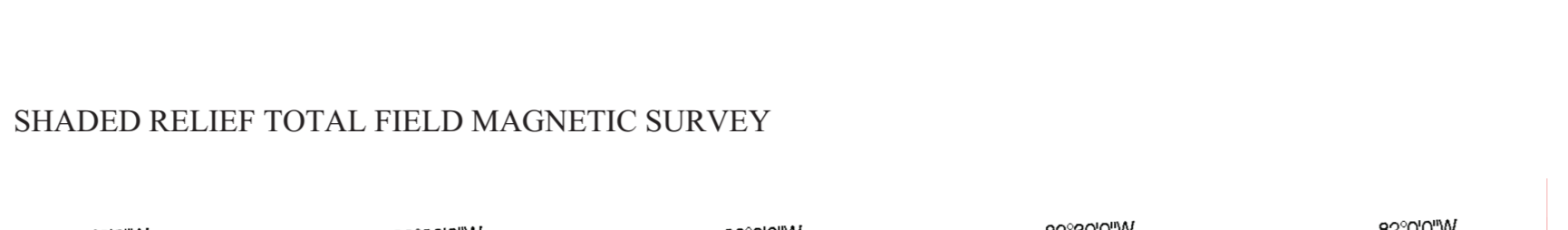
- 1. Bennett, G. 1982. Geology of the Two Horse Lake area, District of Algoma, Ontario Department of Mines, Geological Report 176, 70p.



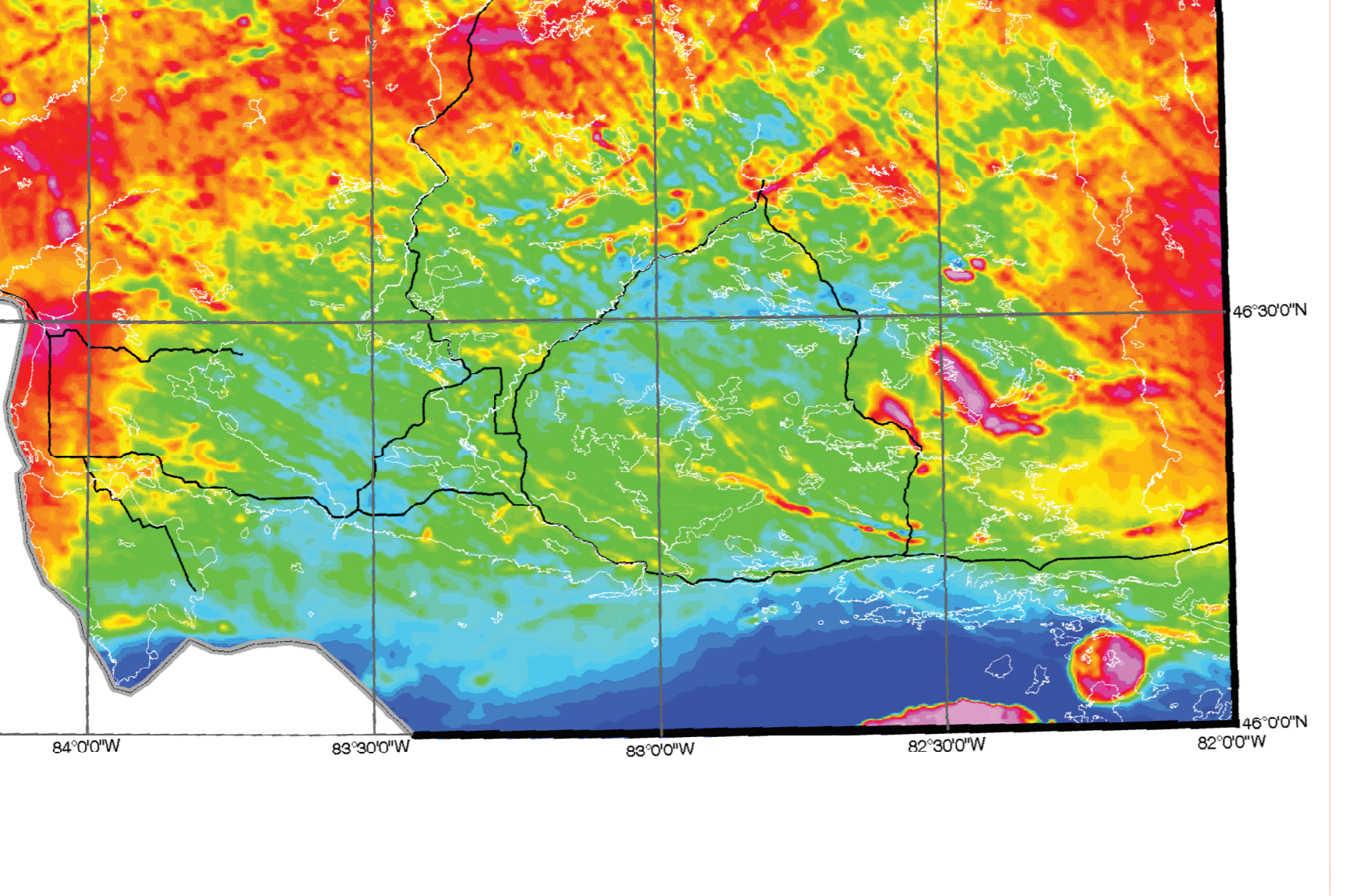
SHADED RELIEF TOTAL FIELD MAGNETIC SURVEY



Cross Section through the Western Huronian Supergroup



Generalised Stratigraphic Section of the Huronian Supergroup*



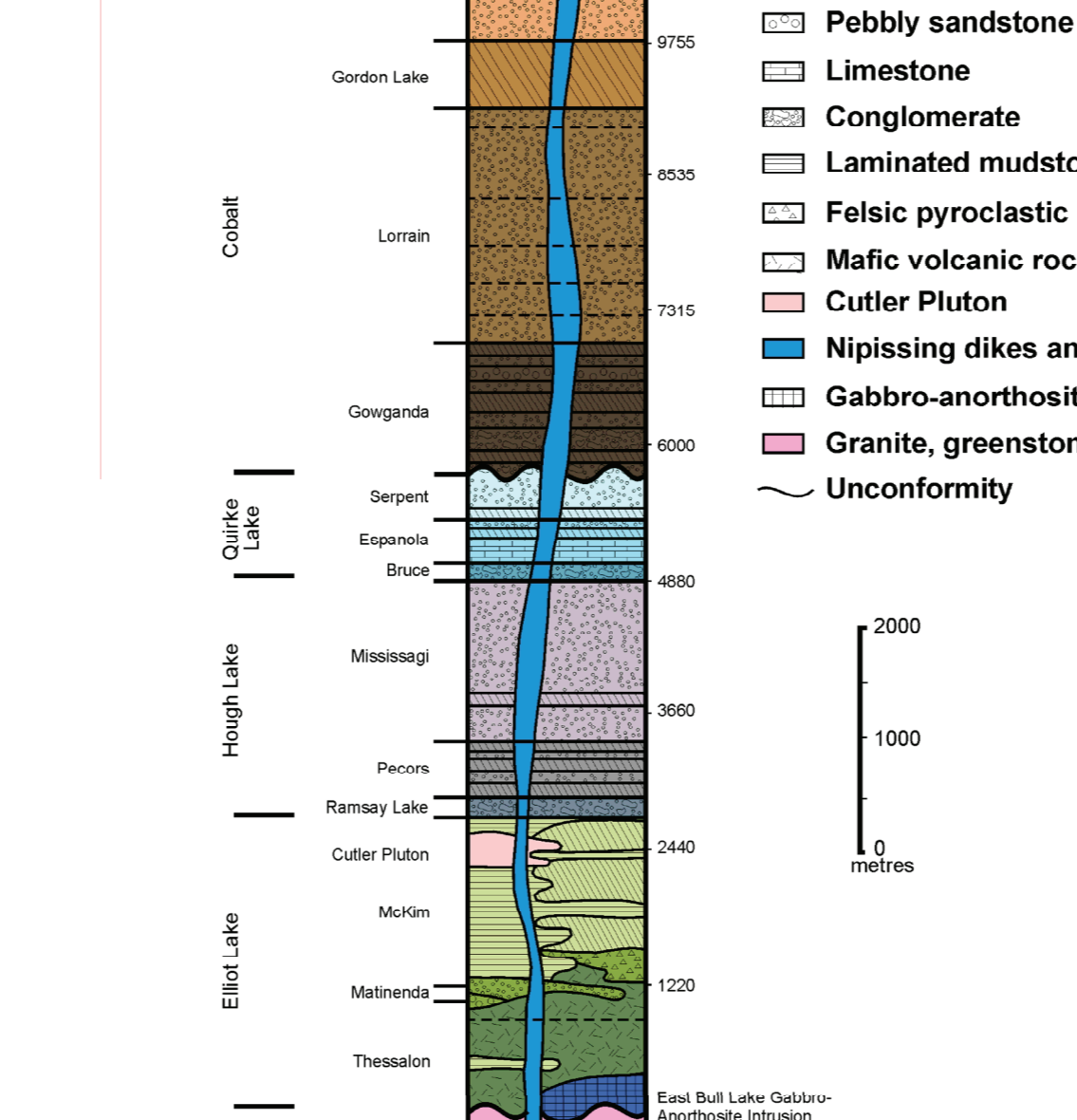
Schematic Legend*

- PROTEROZOIC: Huronian Supergroup, Cobalt Group, Bar River Formation, Gordon Lake Formation, etc.

Legend*

- 19 Huronian Supergroup (2000 to 2450 Ma), 18 Cobalt Group, 17a Bar River Formation, etc.

Location Map and General Geology



Legend*

- PHANEROZOIC: PALEOZOIC, SILURIAN, MIDDLE AND LOWER SILURIAN, etc.

Legend*

- PRECAMBRIAN: PROTEROZOIC, MESOPROTEROZOIC (0.9-2.6 Ga), JACOBVILLE FORMATION (1085 Ma), etc.

Legend*

- ARCHAean: Neoarchaean (2.5 to 2.9 Ga), Archaean (2.5 to 2.9 Ga), Neo-to Mesoproterozoic (2.5 to 3.4 Ga), etc.

* Lithologic units in 'Schematic'; * Modified from Bennett et al. 11; * Geology of Ontario, Special Volume 4, Part 1, p. 549-591.