

THESE TERMS GOVERN YOUR USE OF THIS DOCUMENT

Your use of this Ontario Geological Survey document (the “Content”) is governed by the terms set out on this page (“Terms of Use”). By downloading this Content, you (the “User”) have accepted, and have agreed to be bound by, the Terms of Use.

Content: This Content is offered by the Province of Ontario’s *Ministry of Northern Development and Mines* (MNDM) as a public service, on an “as-is” basis. Recommendations and statements of opinion expressed in the Content are those of the author or authors and are not to be construed as statement of government policy. You are solely responsible for your use of the Content. You should not rely on the Content for legal advice nor as authoritative in your particular circumstances. Users should verify the accuracy and applicability of any Content before acting on it. MNDM does not guarantee, or make any warranty express or implied, that the Content is current, accurate, complete or reliable. MNDM is not responsible for any damage however caused, which results, directly or indirectly, from your use of the Content. MNDM assumes no legal liability or responsibility for the Content whatsoever.

Links to Other Web Sites: This Content may contain links, to Web sites that are not operated by MNDM. Linked Web sites may not be available in French. MNDM neither endorses nor assumes any responsibility for the safety, accuracy or availability of linked Web sites or the information contained on them. The linked Web sites, their operation and content are the responsibility of the person or entity for which they were created or maintained (the “Owner”). Both your use of a linked Web site, and your right to use or reproduce information or materials from a linked Web site, are subject to the terms of use governing that particular Web site. Any comments or inquiries regarding a linked Web site must be directed to its Owner.

Copyright: Canadian and international intellectual property laws protect the Content. Unless otherwise indicated, copyright is held by the Queen’s Printer for Ontario.

It is recommended that reference to the Content be made in the following form: <Author’s last name>, <Initials> <year of publication>. <Content title>; Ontario Geological Survey, <Content publication series and number>, <total number of pages>p.

Use and Reproduction of Content: The Content may be used and reproduced only in accordance with applicable intellectual property laws. *Non-commercial* use of unsubstantial excerpts of the Content is permitted provided that appropriate credit is given and Crown copyright is acknowledged. Any substantial reproduction of the Content or any *commercial* use of all or part of the Content is prohibited without the prior written permission of MNDM. Substantial reproduction includes the reproduction of any illustration or figure, such as, but not limited to graphs, charts and maps. Commercial use includes commercial distribution of the Content, the reproduction of multiple copies of the Content for any purpose whether or not commercial, use of the Content in commercial publications, and the creation of value-added products using the Content.

Contact:

FOR FURTHER INFORMATION ON	PLEASE CONTACT:	BY TELEPHONE:	BY E-MAIL:
The Reproduction of Content	MNDM Publication Services	Local: (705) 670-5691 Toll Free: 1-888-415-9845, ext. 5691 (inside Canada, United States)	Pubsales@ndm.gov.on.ca
The Purchase of MNDM Publications	MNDM Publication Sales	Local: (705) 670-5691 Toll Free: 1-888-415-9845, ext. 5691 (inside Canada, United States)	Pubsales@ndm.gov.on.ca
Crown Copyright	Queen’s Printer	Local: (416) 326-2678 Toll Free: 1-800-668-9938 (inside Canada, United States)	Copyright@gov.on.ca

LES CONDITIONS CI-DESSOUS RÉGISSENT L'UTILISATION DU PRÉSENT DOCUMENT.

Votre utilisation de ce document de la Commission géologique de l'Ontario (le « contenu ») est régie par les conditions décrites sur cette page (« conditions d'utilisation »). En téléchargeant ce contenu, vous (l'« utilisateur ») signifiez que vous avez accepté d'être lié par les présentes conditions d'utilisation.

Contenu : Ce contenu est offert en l'état comme service public par le *ministère du Développement du Nord et des Mines* (MDNM) de la province de l'Ontario. Les recommandations et les opinions exprimées dans le contenu sont celles de l'auteur ou des auteurs et ne doivent pas être interprétées comme des énoncés officiels de politique gouvernementale. Vous êtes entièrement responsable de l'utilisation que vous en faites. Le contenu ne constitue pas une source fiable de conseils juridiques et ne peut en aucun cas faire autorité dans votre situation particulière. Les utilisateurs sont tenus de vérifier l'exactitude et l'applicabilité de tout contenu avant de l'utiliser. Le MDNM n'offre aucune garantie expresse ou implicite relativement à la mise à jour, à l'exactitude, à l'intégralité ou à la fiabilité du contenu. Le MDNM ne peut être tenu responsable de tout dommage, quelle qu'en soit la cause, résultant directement ou indirectement de l'utilisation du contenu. Le MDNM n'assume aucune responsabilité légale de quelque nature que ce soit en ce qui a trait au contenu.

Liens vers d'autres sites Web : Ce contenu peut comporter des liens vers des sites Web qui ne sont pas exploités par le MDNM. Certains de ces sites pourraient ne pas être offerts en français. Le MDNM se dégage de toute responsabilité quant à la sûreté, à l'exactitude ou à la disponibilité des sites Web ainsi reliés ou à l'information qu'ils contiennent. La responsabilité des sites Web ainsi reliés, de leur exploitation et de leur contenu incombe à la personne ou à l'entité pour lesquelles ils ont été créés ou sont entretenus (le « propriétaire »). Votre utilisation de ces sites Web ainsi que votre droit d'utiliser ou de reproduire leur contenu sont assujettis aux conditions d'utilisation propres à chacun de ces sites. Tout commentaire ou toute question concernant l'un de ces sites doivent être adressés au propriétaire du site.

Droits d'auteur : Le contenu est protégé par les lois canadiennes et internationales sur la propriété intellectuelle. Sauf indication contraire, les droits d'auteurs appartiennent à l'Imprimeur de la Reine pour l'Ontario.

Nous recommandons de faire paraître ainsi toute référence au contenu : nom de famille de l'auteur, initiales, année de publication, titre du document, Commission géologique de l'Ontario, série et numéro de publication, nombre de pages.

Utilisation et reproduction du contenu : Le contenu ne peut être utilisé et reproduit qu'en conformité avec les lois sur la propriété intellectuelle applicables. L'utilisation de courts extraits du contenu à des fins *non commerciales* est autorisée, à condition de faire une mention de source appropriée reconnaissant les droits d'auteurs de la Couronne. Toute reproduction importante du contenu ou toute utilisation, en tout ou en partie, du contenu à des fins *commerciales* est interdite sans l'autorisation écrite préalable du MDNM. Une reproduction jugée importante comprend la reproduction de toute illustration ou figure comme les graphiques, les diagrammes, les cartes, etc. L'utilisation commerciale comprend la distribution du contenu à des fins commerciales, la reproduction de copies multiples du contenu à des fins commerciales ou non, l'utilisation du contenu dans des publications commerciales et la création de produits à valeur ajoutée à l'aide du contenu.

Renseignements :

POUR PLUS DE RENSEIGNEMENTS SUR	VEUILLEZ VOUS ADRESSER À :	PAR TÉLÉPHONE :	PAR COURRIEL :
la reproduction du contenu	Services de publication du MDNM	Local : (705) 670-5691 Numéro sans frais : 1 888 415-9845, poste 5691 (au Canada et aux États-Unis)	Pubsales@ndm.gov.on.ca
l'achat des publications du MDNM	Vente de publications du MDNM	Local : (705) 670-5691 Numéro sans frais : 1 888 415-9845, poste 5691 (au Canada et aux États-Unis)	Pubsales@ndm.gov.on.ca
les droits d'auteurs de la Couronne	Imprimeur de la Reine	Local : 416 326-2678 Numéro sans frais : 1 800 668-9938 (au Canada et aux États-Unis)	Copyright@gov.on.ca

Ontario Geological Survey

Northern Ontario Engineering Geology Terrain Study 102

MATTAWA AREA

(NTS 31L/SE)

District of Nipissing and County of Renfrew

by

John F. Gartner and D.F. VanDINE

1980



Ontario

Ministry of
Natural
Resources

Hon. James A.C. Auld
Minister

Dr. J.K. Reynolds
Deputy Minister

Ministry of
Northern
Affairs

Hon. Leo Bernier
Minister

Art Herridge
Deputy Minister

THIS PROJECT WAS FUNDED BY
THE ONTARIO MINISTRY OF NORTHERN AFFAIRS
AND IS MANAGED BY
THE ONTARIO MINISTRY OF NATURAL RESOURCES

Every possible effort is made to ensure the accuracy of the information contained in this report, but the Ministry of Natural Resources does not assume any liability for errors that may occur. Source references are included in the report and users may wish to verify critical information.

Publications of the Ontario Ministry of Natural Resources and price list are available through the *Map Unit, Public Service Centre, Room 6404, Whitney Block, Queen's Park, Toronto*, and the *Ontario Government Bookstore, 880 Bay Street, Toronto*.

Orders for publications should be accompanied by cheque or money order payable to the *Treasurer of Ontario*.

ISSN 0709-4671
ISBN 0-7743-4378-8

Parts of this publication may be quoted if credit is given. It is recommended that reference to this report be made in the following form:

Gartner, John F. and VanDINE, D.F.

1980: Mattawa Area (NTS 31L/SE), District of Nipissing and County of Renfrew, Ontario Geological Survey, Northern Ontario Engineering Geology Terrain Study 102, 13 p. Accompanied by Map 5042, scale: 1:100 000.

1200-80-H of C

CONTENTS

	Page
1.0 Introduction	1
2.0 Geological Setting	2
2.1 Bedrock	2
2.2 Quaternary	3
3.0 Engineering Terrain Units	3
3.1 Bedrock Landforms	3
3.1.1 Description	3
3.1.2 Significance	4
3.2 Morainal Landforms	5
3.2.1 Description	5
3.2.2 Significance	5
3.3 Glaciofluvial Landforms	6
3.3.1 Description	6
3.3.2 Significance	8
3.4 Glaciolacustrine Landforms	9
3.4.1 Description	9
3.4.2 Significance	9
3.5 Organic and Alluvial Landforms	10
3.5.1 Description	10
3.5.2 Significance	11
4.0 Summary of Engineering Significance	11
5.0 References	11

TABLE

1 – Summary of engineering significance	12
---	----

MAP (accompanying report)

Map 5042 (coloured) – Northern Ontario Engineering Geology Terrain Study,
Data Base Map, Mattawa (NTS 31L/SE). Scale 1:100 000.

**Northern Ontario
Engineering Geology Terrain Study 102**

MATTAWA AREA

(NTS 31L/SE)

District of Nipissing

and

County of Renfrew

by

John F. Gartner¹ and D.F. VanDINE²

1.0 INTRODUCTION

This report contains an inventory of regional engineering terrain conditions in the Mattawa area, Districts of Nipissing and County of Renfrew. The area, which covers NTS block 31L/SE, lies between Latitude 46°00'N and the Ottawa River and Longitudes 78°00'W and 79°00'W, thus taking in the northern portion of Algonquin Provincial Park. It forms part of a series of publications which provide similar terrain data for some 37 000 km² of northern Ontario.

The purpose of the mapping is to provide a guide for engineering and

¹Consulting Engineering Geologist, Gartner Lee Associates Limited, Markham, Ontario.

²Geologist, Gartner Lee Associates Limited, Markham, Ontario.

Manuscript approved for publication by the Chief, Engineering and Terrain Geology Section, February 18, 1980. This report is published with the permission of E.G. Pye, Director, Ontario Geological Survey.

resource planning functions at a level of detail consistent with a scale of 1:100 000. The terrain information is contained on the Data Base Map (OGS Map 5042, accompanying this report).

Interpretation of existing black and white aerial photographs, at a scale of approximately 1:38 000, was the primary method of obtaining this terrain information. The interpretation was checked with published and unpublished literature which documented previous field visits and observations. During the fall of 1977, roads in the area were traversed and observed terrain conditions recorded as further verification of the office studies. Thus, the map represents a reconnaissance overview of the engineering conditions of the terrain.

An engineering terrain legend was developed to facilitate the mapping and to provide a common information base for the entire map series. This legend is shown on the accompanying Data Base Map. Further information on the mapping techniques, legend format, and possible uses of this terrain data is available in the "Ontario Engineering Geology Terrain Study Users' Manual" (Gartner, Mollard and Roed 1980), a companion publication to this series of maps and reports.

2.0 GEOLOGICAL SETTING:

2.1 BEDROCK:

Precambrian rocks of the Grenville Structural Province underlie the Mattawa map-area. These rocks have a long and complex geological history covering at least 2 500 million years (Lumbers 1971). They have been strongly metamorphosed, folded, and then intruded by igneous rocks.

The oldest and most abundant rocks of the metamorphic complex are metasediments derived largely from siliceous sandstones and siltstones. These metasediments consist of a variety of gneisses and can be found throughout most of the map-area.

Stocks, sheets, and batholiths of felsic igneous rocks were emplaced within the metasediments and were themselves metamorphosed to gneiss and migmatite. These intrusive rocks occur as small bodies scattered through-

out the map-area, but occurrences are larger and more abundant in the western half.

Occurrences of iron, titanium, and euxinite in the west-central part of the area give it a medium mineral potential. Several occurrences of mica in the south-central part give it a medium potential for this commodity. The remainder of the map-area has low mineral potential (Springer 1978).

2.2 QUATERNARY:

Glacial ice advanced toward the south and southwest, (Boissonneau 1968), depositing a discontinuous veneer of ground moraine till over the bedrock. During deglaciation, approximately 10 000 to 12 000 years ago (Harrison 1972), a number of glaciofluvial deposits were formed (Chapman 1975). These deposits, which are shown on the Data Base Map (OGS Map 5042, accompanying this report) as kames, eskers, and outwash, occur mainly in Clara and Cameron Townships.

The portion of the map-area lying immediately south of the Mattawa River was inundated by proglacial lakes. As a result, glaciolacustrine sediments can be found below elevations of 260 to 275 m. These sediments occur along the lowlands bordering the Mattawa and Ottawa Rivers. The Quaternary deposits found in the map-area are quite complex, having resulted from a variety of geological processes associated with glacial, glaciofluvial, and glaciolacustrine conditions. The user is advised to refer to Harrison (1972) and Chapman (1975) for further discussions on the glacial history.

3.0 ENGINEERING TERRAIN UNITS:

3.1 BEDROCK LANDFORMS:

3.1.1 Description:

Rock knob (RN) terrain dominates the map-area. North of the Mattawa River, local relief is generally high, with bedrock hills often exceeding 60 m in height. Complex and steep slopes are common. Throughout the remainder of the area, relief is generally less than 60 m, but slopes are

still complex and steep. Drift cover is thin (less than 1 m) and bare bedrock is common. The overburden becomes thicker on the flanks of some of the bedrock hills. Local till thicknesses reach 5 to 10 m in several areas along and north of the Mattawa River in the northwestern part of the area and along Highway 17 south of the Ottawa River.

Organic terrain commonly occurs between bedrock hills as a subordinate landform within rock knob terrain. Typical terrain unit letter codes are:

$$\frac{\text{RN(tMG, pOT/R)}}{\text{Hj-D(M)}}$$

$$\frac{\text{RN(tMG, pOT/R)}}{\text{Mu-D(M)}}$$

3.1.2 Significance:

RESOURCES: Portions of the rock can be used for crushed stone purposes, but detailed evaluations of suitability for aggregate use would be required. Ground water resources within the bedrock will be limited to fractures, faults, and fissures. The occurrence of aquifers is unpredictable and the terrain has poor potential for ground water supplies.

GENERAL CONSTRUCTION: The major constraints in terms of construction are the bedrock outcrops, the occurrence of large boulders on surface and the organic terrain that is often associated with the bedrock. This means that, in most instances, excavations will require blasting. Site-grading will be expensive and rock fills will be necessary in grading works. Foundation conditions should be excellent on the bedrock, but route alignments will require rock cut-and-fill operations.

Management of the land for any development will be complex. The steep and variable bedrock slopes, combined with the shallow overburden, make the terrain susceptible to surface erosion, especially when cleared of vegetation.

WASTE DISPOSAL: The bedrock terrain is not amenable, in its natural state, to the disposal of waste, whether it be garbage, septic tank effluent, or industrial liquids. Development of lagoons or tile fields will require grading of rock materials and, very often, the importation of soil fill. Fractures in the bedrock could act as conduits for migration of effluents, and the pollution impact on surface drainage courses could be significant.

3.2 MORAINAL LANDFORMS:

3.2.1 Description:

Ground moraine (MG) occurs as a subordinate landform in rock knob terrain throughout most of the map-area. It also occurs as the dominant landform in 1) northwestern Cameron Township in the north-central part of the map-area and 2) northern Fitzgerald Township in the southwestern part.

In both of these areas, the ground moraine consists of bouldery silty sand till. In Cameron Township, the bedrock is never more than a few metres from surface, as indicated by the letter code:

$$\frac{tMG(RN, pOT)/R}{Mu-M}$$

The ground moraine appears to be thicker in Fitzgerald Township, and linear ice flow features have been identified along the northern edge of the deposit. The letter code for this unit is:

$$\frac{tMG(pOT, RN)}{Mu-M}$$

3.2.2 Significance:

RESOURCES: Ground moraine is a poor landform in which to find deposits of sand and gravel. At best, only small pockets of suitable material can be expected. However, local surface deposits of sand and gravel may occur where the ground moraine has been modified by meltwaters or glaciolacustrine action. Ground water resources are expected to be significant only where the ground moraine has a substantial thickness and overlies permeable sand and gravel at depth. Such a situation can be identified only through more detailed studies.

GENERAL CONSTRUCTION: Because ground moraine till is bouldery and often forms only a thin blanket over the bedrock, there will be a number of construction problems associated with rock excavation and grading. Excavations, except for shallow ones, will likely intersect bedrock and zones of very bouldery soils. On the other hand, the proximity

of bedrock means that bearing capacities for foundations will generally be excellent.

WASTE DISPOSAL: The bouldery nature of the till and the existence of near-surface bedrock place constraints on the siting of waste disposal facilities. Septic systems are probably feasible, but site-specific investigations will be required to ascertain bedrock levels, slope conditions, and the proportion of boulders in the till. Determination of the thickness and hydrogeologic characteristics of the morainal till and the surrounding environment is important when assessing these terrain units for solid or liquid waste disposal schemes.

3.3 GLACIOFLUVIAL LANDFORMS:

3.3.1 Description:

Outwash (GO) deposits, which are scattered throughout the Mattawa map-area, are grouped according to their location.

NORTH OF MATTAWA RIVER: Outwash materials are found along Highway 533 from the Town of Mattawa northwest into Antoine Township in the northwest corner of the map-area. In some areas, the outwash consists of well-bedded sand and gravel (Harding 1944), while in others there is a predominance of sand. The material has generally been deposited in low areas adjacent to creeks and is associated with alluvial plains. In some units, bedrock is close to surface. Typical letter codes are:

$$\frac{\text{sgGO}}{\text{Mu-D}}$$

$$\frac{\text{sgGO}}{\text{Lk-Dh}}$$

$$\frac{\text{gsGO}(\text{sgAP})}{\text{Lp-D}(\text{Dh})}$$

$$\frac{\text{sgbGO}(\text{pOT})/\text{R}}{\text{Lun-M}}$$

TOWN OF MATTAWA: The town is underlain by gravelly sand outwash materials which provide a level and well-drained townsite. The Mattawa River passes through the town and a subordinate alluvial plain landform, resulting from deposition by the river, is included in the unit. The letter code is:

$$\frac{\text{sgGO}(\text{sgAP})}{\text{Lu-Dh}}$$

PAPINEAU TOWNSHIP: A large area of outwash covers the southeastern portion of this township. The deposit appears to contain both sand and gravel, and is associated with an esker ridge near its northern limit. Bedrock is often close to the surface and affects the topographic relief of the landform. The letter code is:

$$\frac{\text{sgGO/R}}{\text{Mu-M}}$$

CLARA TOWNSHIP: Outwash is associated with kames and eskers in the western part of the township. The unit consists basically of sand with minor gravel, but pockets of coarse material probably exist. Typical letter symbols are:

$$\frac{\text{sgGO(sgGE)}}{\text{Mu(r)-Dh(D)}}$$

$$\frac{\text{sgGO}}{\text{Mu-M}}$$

$$\frac{\text{sgGO}}{\text{Lp-D}}$$

WHITE TOWNSHIP: This township, located in the southeast corner of the map-area, has an extensive deposit of sandy outwash which is associated with organic terrain. This deposit correlates with the large spillway to the east and south identified by Chapman (1975). The letter code is:

$$\frac{\text{sgGO(pOT)}}{\text{Muk-M}}$$

Eskers (GE, <<<<<<) trend in a southerly direction, the largest being the landforms in the northwest corner of the map-area and south of Deux Rivières in the eastern part. Other isolated esker ridges are scattered throughout the area.

The esker in the northwest corner of the area is associated with flanking outwash deposits and the material can be locally coarse. The terrain unit letter code is:

$$\frac{\text{gsGE}}{\text{Mr-D}}$$

Chapman (1975) describes the esker south of Deux Rivières as the largest in the region. It is 0.8 km wide, 3 m high and has a level top. The esker consists mainly of fine sand with very little gravel.

Kames (GK) are also found within the Mattawa map-area. They are closely associated with the esker at Deux Rivières, as indicated by the complex letter code:

$$\frac{\text{sgGK}(\text{sgGE})}{\text{Mu}(\text{r})\text{-D}}$$

South of the village of Klock in northern Cameron Township, Chapman (1975) mapped kames which he described as part of a recessional moraine. This landform is represented by the letter code:

$$\frac{\text{sgGK}}{\text{Mu-D}}$$

An *ice contact delta* (GD) occurs south of Holden Lake on the Ottawa River, near the eastern boundary of the map-area. A 10 m pit face indicates that the deposit consists of stratified medium and fine sand with minor gravel. The landform is generally planar and terraced. The terrain unit letter code is:

$$\frac{\text{sgGD}}{\text{Mpt-D}}$$

3.3.2 Significance:

RESOURCES: The glaciofluvial deposits are good areas in which to search for sand and gravel resources. Units consisting of sandy gravel (gs) or gravelly sand (sg) are particularly good prospects. Such deposits occur north of the Mattawa River and in association with other landforms throughout the entire map-area.

The larger and deeper outwash deposits have good potential for the discovery of ground water supplies. Harrison (1972), suggested the possibility of a large, untapped source of ground water beneath the Town of Mattawa.

GENERAL CONSTRUCTION: The materials which comprise these glaciofluvial landforms are generally granular in nature and exhibit good engineering characteristics. However, the following local conditions can cause construction difficulties:

- 1) areas of potentially high water tables,
- 2) near-surface bedrock,
- 3) steep and complex slopes in the kame units, and
- 4) the existence of surface and buried boulders.

The terrain unit letter codes should be studied to determine whether such local conditions might exist in the area of interest.

WASTE DISPOSAL: Because of the permeable nature of the materials and the possibility of connections between ground water and surface water, the disposal of liquid and solid wastes within glaciofluvial landforms must be approached with considerable caution. Detailed hydrogeological investigations are required to determine potential contaminant flow characteristics.

3.4 GLACIOLACUSTRINE LANDFORMS:

3.4.1 Description:

Glaciolacustrine plains (LP) occur below elevations of 260 to 275 m, immediately south of the Mattawa and Ottawa Rivers. A typical terrain unit letter code is:

$$\frac{mcLP/R(R)}{Mu-D}$$

This indicates that the landform consists of clayey silt and often overlies bedrock. The terrain is undulating and surface drainage conditions are dry.

3.4.2 Significance:

RESOURCES: Terrain underlain by the glaciolacustrine deposits is usually cultivated or in pasture. Other than this, the glaciolacustrine units have little resource potential.

GENERAL CONSTRUCTION: Construction conditions within the glaciolacustrine landforms are only rated as poor to fair. The low relief and planar topography produces poor surface drainage in many places. The fine-grained texture of the soils (i.e. silt and clay) causes problems

related to earth handling, compaction, and frost susceptibility. Due to the poor geotechnical characteristics of the clay and silt, bearing capacity for foundations may be a problem, especially where there are substantial thicknesses of glaciolacustrine sediments.

WASTE DISPOSAL: Glaciolacustrine landforms are not always suitable for waste disposal schemes. The impermeable nature of the silt and clay impedes the proper functioning of tile beds. Sanitary landfill facilities must be specially designed to avoid contamination of the surface water, and cover materials are often difficult to handle.

3.5 ORGANIC AND ALLUVIAL LANDFORMS:

3.5.1 Description:

Organic terrain (OT) is found throughout the map-area as a common subordinate landform within the rock knob terrain. However, only the larger deposits have been shown as separate terrain units on the Data Base Map (OGS Map 5042, accompanying this report).

The organic materials can occur in association with outwash, lake plain, alluvial plain, ground moraine, or bedrock landforms, as indicated by the letter codes:

$$\frac{\text{pOT}(\text{sgGO})}{\text{Mu-W}}$$

$$\frac{\text{pOT}(\text{smAP})}{\text{Lp-W}}$$

$$\frac{\text{pOT}(\text{RN})}{\text{Lp-W}}$$

More commonly though, the organic terrain occurs as a deeper deposit, shown as:

$$\frac{\text{pOT}}{\text{Lp-W}}$$

Alluvial plains (AP) are associated with most drainage courses, but only the larger ones have been shown on the Data Base Map. An example is the alluvial plain of Deux Rivières Creek, represented by the letter code:

$$\frac{\text{smAP}(\text{pOT})}{\text{Lp-Dh(W)}}$$

3.5.2 Significance:

Both the organic terrain and the alluvial plains have very poor engineering properties and should be avoided by human activities. They are prone to flooding, can contain soft and compressible soils, and are generally unsuitable for any type of development.

4.0 SUMMARY OF ENGINEERING SIGNIFICANCE:

The preceding section described the characteristics of the major landform types and their engineering and resource significance. Table 1 is a summary of the general engineering significance of the more common terrain units found in the area. This table is intended only as a guide to help the reader in assessing the overall significance of the map-units. Site-specific work is necessary to better define actual ground conditions, such as drainage and slope, which are not considered in the table, but which may affect the engineering significance of the various terrain units.

5.0 REFERENCES:

Boissonneau, A.N.

1965: Surficial Geology, Algoma, Sudbury, Timiskaming and Nipissing; Ontario Department of Lands and Forests, Map S465, scale 1:506 880 or 1 inch to 8 miles. Surficial geology 1962, 1963.

1968: Glacial History of Northeastern Ontario II, The Timiskaming-Algoma Area. Canadian Journal of Earth Sciences, Vol. 5, No. 1, p. 97-109.

Chapman, L.J.

1975: The Physiography of the Georgian Bay-Ottawa Valley Area of Southern Ontario; Ontario Division of Mines, Geoscience Report 128, 33 p. Accompanied by Map 2228, scale 1:253 440 or 1 inch to 4 miles.

Gartner, John F., Mollard, J.D., and Roed, M.A.

1980: Ontario Engineering Geology Terrain Study Users' Manual; Ontario Geological Survey, Open File Report 5288, 99 p.

TABLE 1: SUMMARY OF ENGINEERING SIGNIFICANCE

	BEDROCK RN(tMG, POT/R) Mu-D(M)	MORAINAL tMG(pOT, RN) Mu-M	GLACIOFLUVIAL			GLACIO- LACUSTRINE	ORGANIC
			sgGO	sgGE	GK		
RESOURCE POTENTIAL	SAND & GRAVEL	Poor	Excellent	Excellent	Good	LP	OT
	GROUND WATER	Poor	Good	Fair	Fair	Poor	Poor
LIGHT CONSTRUCTION CONDITIONS	EXCAVATIONS	Blasting	Excellent	Good	Fair	Good	Poor
	FOUNDATIONS	Excellent	Good	Good	Good	Fair to Poor	Very Poor
	GRADING	Difficult	Fair	Good	Fair	Good	Very Poor
	MATERIAL RE-USE	Rockfill	Fair to Good	Excellent	Good	Fair to Poor	Very Poor
WASTE DISPOSAL SUITABILITY	SEPTIC SYSTEMS	Very Poor	Fair	Good	Fair	Fair to Poor	Very Poor
	LANDFILL	Very Poor	Fair	Poor	Poor	Fair	Very Poor
	LAGOONS	Very Poor	Fair to Good	Fair	Fair	Good	Very Poor

Gillespie, J.E., Wicklund, R.E., and Matthews, B.C.

1964: Soil Survey of Renfrew County; Ontario Department of Agriculture, Report No. 37, 57 p. Accompanied by soil maps, scale 1 inch to 1 mile.

Harding, W.D.

1946: Geology of the Mattawan-Olrig Area; Ontario Department of Mines, Vol. 53, Pt. 6 (1944), p. 1-47. Accompanied by Map 53d, scale 1:63 360 or 1 inch to 1 mile.

Harrison, J.E.

1972: Quaternary Geology of the North Bay-Mattawa Region. Geological Survey of Canada, Paper 71-26, 37 p. Accompanied by Map 3-1971, scale 1:125 000. Geology 1969.

Lumbers, S.B.

1971: Geology of the North Bay Area, Districts of Nipissing and Parry Sound; Ontario Department of Mines and Northern Affairs, Geological Report 94, 104 p. Accompanied by Map 2216, scale 1:126 720 or 1 inch to 2 miles.

Lumbers, S.B. and Milne, V.G.

1979: Ontario Geological Map, East Central Sheet; Ontario Geological Survey, Map 2393, scale 1:1 013 760 or 1 inch to 16 miles. Revised compilation 1976.

Springer, Janet

1978: Ontario Mineral Potential, Parts of North Bay, Deep River, and Ville Marie Sheets, Districts of Nipissing, Parry Sound, and County of Renfrew; Ontario Geological Survey, Preliminary Map P.1510, Mineral Deposits Series, scale 1:250 000. Compilation 1976.

Ontario Geological Survey

Northern Ontario Engineering Geology Terrain Study 102

MATTAWA AREA

(NTS 31L/SE)

District of Nipissing and County of Renfrew

by

John F. Gartner and D.F. VanDINE

1980



Ontario

Ministry of
Natural
Resources

Hon. James A.C. Auld
Minister

Dr. J.K. Reynolds
Deputy Minister

Ministry of
Northern
Affairs

Hon. Leo Bernier
Minister

Art Herridge
Deputy Minister

THIS PROJECT WAS FUNDED BY
THE ONTARIO MINISTRY OF NORTHERN AFFAIRS
AND IS MANAGED BY
THE ONTARIO MINISTRY OF NATURAL RESOURCES

Every possible effort is made to ensure the accuracy of the information contained in this report, but the Ministry of Natural Resources does not assume any liability for errors that may occur. Source references are included in the report and users may wish to verify critical information.

Publications of the Ontario Ministry of Natural Resources and price list are available through the *Map Unit, Public Service Centre, Room 6404, Whitney Block, Queen's Park, Toronto*, and the *Ontario Government Bookstore, 880 Bay Street, Toronto*.

Orders for publications should be accompanied by cheque or money order payable to the *Treasurer of Ontario*.

ISSN 0709-4671
ISBN 0-7743-4378-8

Parts of this publication may be quoted if credit is given. It is recommended that reference to this report be made in the following form:

Gartner, John F. and VanDINE, D.F.

1980: Mattawa Area (NTS 31L/SE), District of Nipissing and County of Renfrew, Ontario Geological Survey, Northern Ontario Engineering Geology Terrain Study 102, 13 p. Accompanied by Map 5042, scale: 1:100 000.

1200-80-H of C

CONTENTS

	Page
1.0 Introduction	1
2.0 Geological Setting	2
2.1 Bedrock	2
2.2 Quaternary	3
3.0 Engineering Terrain Units	3
3.1 Bedrock Landforms	3
3.1.1 Description	3
3.1.2 Significance	4
3.2 Morainal Landforms	5
3.2.1 Description	5
3.2.2 Significance	5
3.3 Glaciofluvial Landforms	6
3.3.1 Description	6
3.3.2 Significance	8
3.4 Glaciolacustrine Landforms	9
3.4.1 Description	9
3.4.2 Significance	9
3.5 Organic and Alluvial Landforms	10
3.5.1 Description	10
3.5.2 Significance	11
4.0 Summary of Engineering Significance	11
5.0 References	11

TABLE

1 – Summary of engineering significance	12
---	----

MAP (accompanying report)

Map 5042 (coloured) – Northern Ontario Engineering Geology Terrain Study,
Data Base Map, Mattawa (NTS 31L/SE). Scale 1:100 000.

**Northern Ontario
Engineering Geology Terrain Study 102**

MATTAWA AREA

(NTS 31L/SE)

District of Nipissing

and

County of Renfrew

by

John F. Gartner¹ and D.F. VanDINE²

1.0 INTRODUCTION

This report contains an inventory of regional engineering terrain conditions in the Mattawa area, Districts of Nipissing and County of Renfrew. The area, which covers NTS block 31L/SE, lies between Latitude 46°00'N and the Ottawa River and Longitudes 78°00'W and 79°00'W, thus taking in the northern portion of Algonquin Provincial Park. It forms part of a series of publications which provide similar terrain data for some 37 000 km² of northern Ontario.

The purpose of the mapping is to provide a guide for engineering and

¹Consulting Engineering Geologist, Gartner Lee Associates Limited, Markham, Ontario.

²Geologist, Gartner Lee Associates Limited, Markham, Ontario.

Manuscript approved for publication by the Chief, Engineering and Terrain Geology Section, February 18, 1980. This report is published with the permission of E.G. Pye, Director, Ontario Geological Survey.

resource planning functions at a level of detail consistent with a scale of 1:100 000. The terrain information is contained on the Data Base Map (OGS Map 5042, accompanying this report).

Interpretation of existing black and white aerial photographs, at a scale of approximately 1:38 000, was the primary method of obtaining this terrain information. The interpretation was checked with published and unpublished literature which documented previous field visits and observations. During the fall of 1977, roads in the area were traversed and observed terrain conditions recorded as further verification of the office studies. Thus, the map represents a reconnaissance overview of the engineering conditions of the terrain.

An engineering terrain legend was developed to facilitate the mapping and to provide a common information base for the entire map series. This legend is shown on the accompanying Data Base Map. Further information on the mapping techniques, legend format, and possible uses of this terrain data is available in the "Ontario Engineering Geology Terrain Study Users' Manual" (Gartner, Mollard and Roed 1980), a companion publication to this series of maps and reports.

2.0 GEOLOGICAL SETTING:

2.1 BEDROCK:

Precambrian rocks of the Grenville Structural Province underlie the Mattawa map-area. These rocks have a long and complex geological history covering at least 2 500 million years (Lumbers 1971). They have been strongly metamorphosed, folded, and then intruded by igneous rocks.

The oldest and most abundant rocks of the metamorphic complex are metasediments derived largely from siliceous sandstones and siltstones. These metasediments consist of a variety of gneisses and can be found throughout most of the map-area.

Stocks, sheets, and batholiths of felsic igneous rocks were emplaced within the metasediments and were themselves metamorphosed to gneiss and migmatite. These intrusive rocks occur as small bodies scattered through-

out the map-area, but occurrences are larger and more abundant in the western half.

Occurrences of iron, titanium, and euxinite in the west-central part of the area give it a medium mineral potential. Several occurrences of mica in the south-central part give it a medium potential for this commodity. The remainder of the map-area has low mineral potential (Springer 1978).

2.2 QUATERNARY:

Glacial ice advanced toward the south and southwest, (Boissonneau 1968), depositing a discontinuous veneer of ground moraine till over the bedrock. During deglaciation, approximately 10 000 to 12 000 years ago (Harrison 1972), a number of glaciofluvial deposits were formed (Chapman 1975). These deposits, which are shown on the Data Base Map (OGS Map 5042, accompanying this report) as kames, eskers, and outwash, occur mainly in Clara and Cameron Townships.

The portion of the map-area lying immediately south of the Mattawa River was inundated by proglacial lakes. As a result, glaciolacustrine sediments can be found below elevations of 260 to 275 m. These sediments occur along the lowlands bordering the Mattawa and Ottawa Rivers. The Quaternary deposits found in the map-area are quite complex, having resulted from a variety of geological processes associated with glacial, glaciofluvial, and glaciolacustrine conditions. The user is advised to refer to Harrison (1972) and Chapman (1975) for further discussions on the glacial history.

3.0 ENGINEERING TERRAIN UNITS:

3.1 BEDROCK LANDFORMS:

3.1.1 Description:

Rock knob (RN) terrain dominates the map-area. North of the Mattawa River, local relief is generally high, with bedrock hills often exceeding 60 m in height. Complex and steep slopes are common. Throughout the remainder of the area, relief is generally less than 60 m, but slopes are

still complex and steep. Drift cover is thin (less than 1 m) and bare bedrock is common. The overburden becomes thicker on the flanks of some of the bedrock hills. Local till thicknesses reach 5 to 10 m in several areas along and north of the Mattawa River in the northwestern part of the area and along Highway 17 south of the Ottawa River.

Organic terrain commonly occurs between bedrock hills as a subordinate landform within rock knob terrain. Typical terrain unit letter codes are:

$$\frac{\text{RN(tMG, pOT/R)}}{\text{Hj-D(M)}}$$

$$\frac{\text{RN(tMG, pOT/R)}}{\text{Mu-D(M)}}$$

3.1.2 Significance:

RESOURCES: Portions of the rock can be used for crushed stone purposes, but detailed evaluations of suitability for aggregate use would be required. Ground water resources within the bedrock will be limited to fractures, faults, and fissures. The occurrence of aquifers is unpredictable and the terrain has poor potential for ground water supplies.

GENERAL CONSTRUCTION: The major constraints in terms of construction are the bedrock outcrops, the occurrence of large boulders on surface and the organic terrain that is often associated with the bedrock. This means that, in most instances, excavations will require blasting. Site-grading will be expensive and rock fills will be necessary in grading works. Foundation conditions should be excellent on the bedrock, but route alignments will require rock cut-and-fill operations.

Management of the land for any development will be complex. The steep and variable bedrock slopes, combined with the shallow overburden, make the terrain susceptible to surface erosion, especially when cleared of vegetation.

WASTE DISPOSAL: The bedrock terrain is not amenable, in its natural state, to the disposal of waste, whether it be garbage, septic tank effluent, or industrial liquids. Development of lagoons or tile fields will require grading of rock materials and, very often, the importation of soil fill. Fractures in the bedrock could act as conduits for migration of effluents, and the pollution impact on surface drainage courses could be significant.

3.2 MORAINAL LANDFORMS:

3.2.1 Description:

Ground moraine (MG) occurs as a subordinate landform in rock knob terrain throughout most of the map-area. It also occurs as the dominant landform in 1) northwestern Cameron Township in the north-central part of the map-area and 2) northern Fitzgerald Township in the southwestern part.

In both of these areas, the ground moraine consists of bouldery silty sand till. In Cameron Township, the bedrock is never more than a few metres from surface, as indicated by the letter code:

$$\frac{tMG(RN, pOT)/R}{Mu-M}$$

The ground moraine appears to be thicker in Fitzgerald Township, and linear ice flow features have been identified along the northern edge of the deposit. The letter code for this unit is:

$$\frac{tMG(pOT, RN)}{Mu-M}$$

3.2.2 Significance:

RESOURCES: Ground moraine is a poor landform in which to find deposits of sand and gravel. At best, only small pockets of suitable material can be expected. However, local surface deposits of sand and gravel may occur where the ground moraine has been modified by meltwaters or glaciolacustrine action. Ground water resources are expected to be significant only where the ground moraine has a substantial thickness and overlies permeable sand and gravel at depth. Such a situation can be identified only through more detailed studies.

GENERAL CONSTRUCTION: Because ground moraine till is bouldery and often forms only a thin blanket over the bedrock, there will be a number of construction problems associated with rock excavation and grading. Excavations, except for shallow ones, will likely intersect bedrock and zones of very bouldery soils. On the other hand, the proximity

of bedrock means that bearing capacities for foundations will generally be excellent.

WASTE DISPOSAL: The bouldery nature of the till and the existence of near-surface bedrock place constraints on the siting of waste disposal facilities. Septic systems are probably feasible, but site-specific investigations will be required to ascertain bedrock levels, slope conditions, and the proportion of boulders in the till. Determination of the thickness and hydrogeologic characteristics of the morainal till and the surrounding environment is important when assessing these terrain units for solid or liquid waste disposal schemes.

3.3 GLACIOFLUVIAL LANDFORMS:

3.3.1 Description:

Outwash (GO) deposits, which are scattered throughout the Mattawa map-area, are grouped according to their location.

NORTH OF MATTAWA RIVER: Outwash materials are found along Highway 533 from the Town of Mattawa northwest into Antoine Township in the northwest corner of the map-area. In some areas, the outwash consists of well-bedded sand and gravel (Harding 1944), while in others there is a predominance of sand. The material has generally been deposited in low areas adjacent to creeks and is associated with alluvial plains. In some units, bedrock is close to surface. Typical letter codes are:

$$\frac{\text{sgGO}}{\text{Mu-D}}$$

$$\frac{\text{sgGO}}{\text{Lk-Dh}}$$

$$\frac{\text{gsGO}(\text{sgAP})}{\text{Lp-D}(\text{Dh})}$$

$$\frac{\text{sgbGO}(\text{pOT})/\text{R}}{\text{Lun-M}}$$

TOWN OF MATTAWA: The town is underlain by gravelly sand outwash materials which provide a level and well-drained townsite. The Mattawa River passes through the town and a subordinate alluvial plain landform, resulting from deposition by the river, is included in the unit. The letter code is:

$$\frac{\text{sgGO}(\text{sgAP})}{\text{Lu-Dh}}$$

PAPINEAU TOWNSHIP: A large area of outwash covers the southeastern portion of this township. The deposit appears to contain both sand and gravel, and is associated with an esker ridge near its northern limit. Bedrock is often close to the surface and affects the topographic relief of the landform. The letter code is:

$$\frac{\text{sgGO/R}}{\text{Mu-M}}$$

CLARA TOWNSHIP: Outwash is associated with kames and eskers in the western part of the township. The unit consists basically of sand with minor gravel, but pockets of coarse material probably exist. Typical letter symbols are:

$$\frac{\text{sgGO(sgGE)}}{\text{Mu(r)-Dh(D)}}$$

$$\frac{\text{sgGO}}{\text{Mu-M}}$$

$$\frac{\text{sgGO}}{\text{Lp-D}}$$

WHITE TOWNSHIP: This township, located in the southeast corner of the map-area, has an extensive deposit of sandy outwash which is associated with organic terrain. This deposit correlates with the large spillway to the east and south identified by Chapman (1975). The letter code is:

$$\frac{\text{sgGO(pOT)}}{\text{Muk-M}}$$

Eskers (GE, <<<<<<) trend in a southerly direction, the largest being the landforms in the northwest corner of the map-area and south of Deux Rivières in the eastern part. Other isolated esker ridges are scattered throughout the area.

The esker in the northwest corner of the area is associated with flanking outwash deposits and the material can be locally coarse. The terrain unit letter code is:

$$\frac{\text{gsGE}}{\text{Mr-D}}$$

Chapman (1975) describes the esker south of Deux Rivières as the largest in the region. It is 0.8 km wide, 3 m high and has a level top. The esker consists mainly of fine sand with very little gravel.

Kames (GK) are also found within the Mattawa map-area. They are closely associated with the esker at Deux Rivières, as indicated by the complex letter code:

$$\frac{\text{sgGK}(\text{sgGE})}{\text{Mu}(\text{r})\text{-D}}$$

South of the village of Klock in northern Cameron Township, Chapman (1975) mapped kames which he described as part of a recessional moraine. This landform is represented by the letter code:

$$\frac{\text{sgGK}}{\text{Mu-D}}$$

An *ice contact delta* (GD) occurs south of Holden Lake on the Ottawa River, near the eastern boundary of the map-area. A 10 m pit face indicates that the deposit consists of stratified medium and fine sand with minor gravel. The landform is generally planar and terraced. The terrain unit letter code is:

$$\frac{\text{sgGD}}{\text{Mpt-D}}$$

3.3.2 Significance:

RESOURCES: The glaciofluvial deposits are good areas in which to search for sand and gravel resources. Units consisting of sandy gravel (gs) or gravelly sand (sg) are particularly good prospects. Such deposits occur north of the Mattawa River and in association with other landforms throughout the entire map-area.

The larger and deeper outwash deposits have good potential for the discovery of ground water supplies. Harrison (1972), suggested the possibility of a large, untapped source of ground water beneath the Town of Mattawa.

GENERAL CONSTRUCTION: The materials which comprise these glaciofluvial landforms are generally granular in nature and exhibit good engineering characteristics. However, the following local conditions can cause construction difficulties:

- 1) areas of potentially high water tables,
- 2) near-surface bedrock,
- 3) steep and complex slopes in the kame units, and
- 4) the existence of surface and buried boulders.

The terrain unit letter codes should be studied to determine whether such local conditions might exist in the area of interest.

WASTE DISPOSAL: Because of the permeable nature of the materials and the possibility of connections between ground water and surface water, the disposal of liquid and solid wastes within glaciofluvial landforms must be approached with considerable caution. Detailed hydrogeological investigations are required to determine potential contaminant flow characteristics.

3.4 GLACIOLACUSTRINE LANDFORMS:

3.4.1 Description:

Glaciolacustrine plains (LP) occur below elevations of 260 to 275 m, immediately south of the Mattawa and Ottawa Rivers. A typical terrain unit letter code is:

$$\frac{mcLP/R(R)}{Mu-D}$$

This indicates that the landform consists of clayey silt and often overlies bedrock. The terrain is undulating and surface drainage conditions are dry.

3.4.2 Significance:

RESOURCES: Terrain underlain by the glaciolacustrine deposits is usually cultivated or in pasture. Other than this, the glaciolacustrine units have little resource potential.

GENERAL CONSTRUCTION: Construction conditions within the glaciolacustrine landforms are only rated as poor to fair. The low relief and planar topography produces poor surface drainage in many places. The fine-grained texture of the soils (i.e. silt and clay) causes problems

related to earth handling, compaction, and frost susceptibility. Due to the poor geotechnical characteristics of the clay and silt, bearing capacity for foundations may be a problem, especially where there are substantial thicknesses of glaciolacustrine sediments.

WASTE DISPOSAL: Glaciolacustrine landforms are not always suitable for waste disposal schemes. The impermeable nature of the silt and clay impedes the proper functioning of tile beds. Sanitary landfill facilities must be specially designed to avoid contamination of the surface water, and cover materials are often difficult to handle.

3.5 ORGANIC AND ALLUVIAL LANDFORMS:

3.5.1 Description:

Organic terrain (OT) is found throughout the map-area as a common subordinate landform within the rock knob terrain. However, only the larger deposits have been shown as separate terrain units on the Data Base Map (OGS Map 5042, accompanying this report).

The organic materials can occur in association with outwash, lake plain, alluvial plain, ground moraine, or bedrock landforms, as indicated by the letter codes:

$$\frac{\text{pOT}(\text{sgGO})}{\text{Mu-W}}$$

$$\frac{\text{pOT}(\text{smAP})}{\text{Lp-W}}$$

$$\frac{\text{pOT}(\text{RN})}{\text{Lp-W}}$$

More commonly though, the organic terrain occurs as a deeper deposit, shown as:

$$\frac{\text{pOT}}{\text{Lp-W}}$$

Alluvial plains (AP) are associated with most drainage courses, but only the larger ones have been shown on the Data Base Map. An example is the alluvial plain of Deux Rivières Creek, represented by the letter code:

$$\frac{\text{smAP}(\text{pOT})}{\text{Lp-Dh(W)}}$$

3.5.2 Significance:

Both the organic terrain and the alluvial plains have very poor engineering properties and should be avoided by human activities. They are prone to flooding, can contain soft and compressible soils, and are generally unsuitable for any type of development.

4.0 SUMMARY OF ENGINEERING SIGNIFICANCE:

The preceding section described the characteristics of the major landform types and their engineering and resource significance. Table 1 is a summary of the general engineering significance of the more common terrain units found in the area. This table is intended only as a guide to help the reader in assessing the overall significance of the map-units. Site-specific work is necessary to better define actual ground conditions, such as drainage and slope, which are not considered in the table, but which may affect the engineering significance of the various terrain units.

5.0 REFERENCES:

Boissonneau, A.N.

1965: Surficial Geology, Algoma, Sudbury, Timiskaming and Nipissing; Ontario Department of Lands and Forests, Map S465, scale 1:506 880 or 1 inch to 8 miles. Surficial geology 1962, 1963.

1968: Glacial History of Northeastern Ontario II, The Timiskaming-Algoma Area. Canadian Journal of Earth Sciences, Vol. 5, No. 1, p. 97-109.

Chapman, L.J.

1975: The Physiography of the Georgian Bay-Ottawa Valley Area of Southern Ontario; Ontario Division of Mines, Geoscience Report 128, 33 p. Accompanied by Map 2228, scale 1:253 440 or 1 inch to 4 miles.

Gartner, John F., Mollard, J.D., and Roed, M.A.

1980: Ontario Engineering Geology Terrain Study Users' Manual; Ontario Geological Survey, Open File Report 5288, 99 p.

TABLE 1: SUMMARY OF ENGINEERING SIGNIFICANCE

	BEDROCK RN(tMG, POT/R) Mu-D(M)	MORAINAL tMG(pOT, RN) Mu-M	GLACIOFLUVIAL			GLACIO- LACUSTRINE	ORGANIC
			sgGO	sgGE	GK		
RESOURCE POTENTIAL	SAND & GRAVEL	Poor	Excellent	Excellent	Good	LP	OT
	GROUND WATER	Poor	Good	Fair	Fair	Poor	Poor
LIGHT CONSTRUCTION CONDITIONS	EXCAVATIONS	Blasting	Excellent	Good	Fair	Good	Poor
	FOUNDATIONS	Excellent	Good	Good	Good	Fair to Poor	Very Poor
	GRADING	Difficult	Fair	Good	Fair	Good	Very Poor
	MATERIAL RE-USE	Rockfill	Fair to Good	Excellent	Good	Fair to Poor	Very Poor
WASTE DISPOSAL SUITABILITY	SEPTIC SYSTEMS	Very Poor	Fair	Fair	Fair	Fair to Poor	Very Poor
	LANDFILL	Very Poor	Fair	Poor	Poor	Fair	Very Poor
	LAGOONS	Very Poor	Fair to Good	Fair	Fair	Good	Very Poor

Gillespie, J.E., Wicklund, R.E., and Matthews, B.C.

1964: Soil Survey of Renfrew County; Ontario Department of Agriculture, Report No. 37, 57 p. Accompanied by soil maps, scale 1 inch to 1 mile.

Harding, W.D.

1946: Geology of the Mattawan-Olrig Area; Ontario Department of Mines, Vol. 53, Pt. 6 (1944), p. 1-47. Accompanied by Map 53d, scale 1:63 360 or 1 inch to 1 mile.

Harrison, J.E.

1972: Quaternary Geology of the North Bay-Mattawa Region. Geological Survey of Canada, Paper 71-26, 37 p. Accompanied by Map 3-1971, scale 1:125 000. Geology 1969.

Lumbers, S.B.

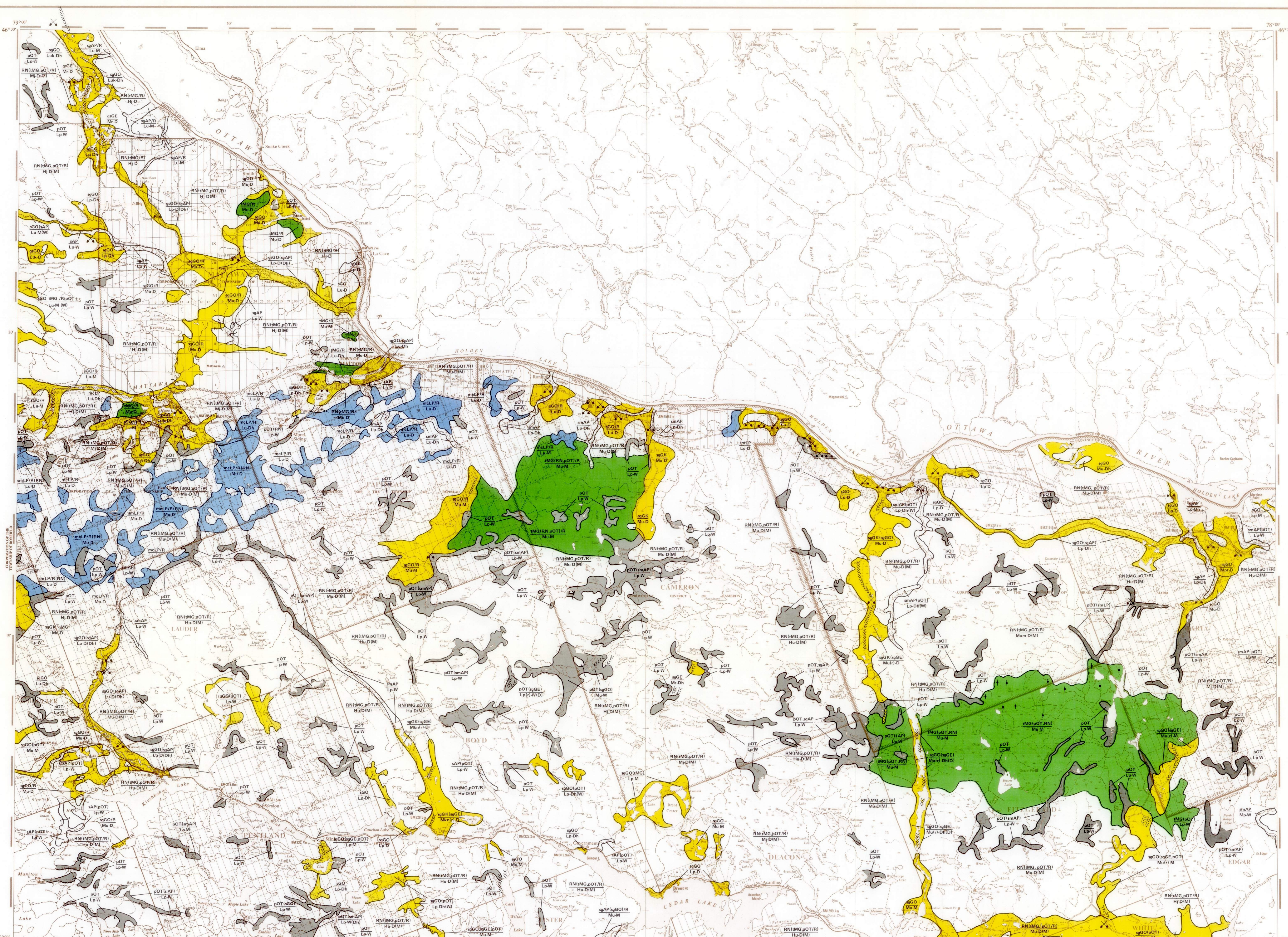
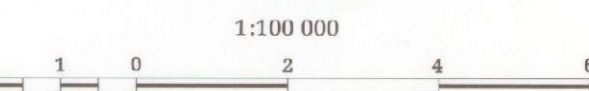
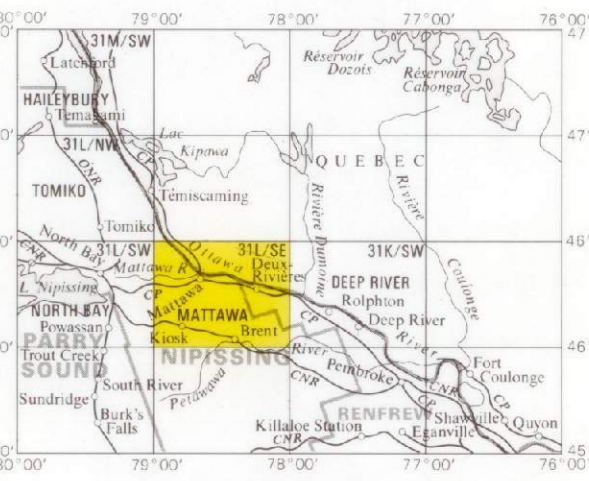
1971: Geology of the North Bay Area, Districts of Nipissing and Parry Sound; Ontario Department of Mines and Northern Affairs, Geological Report 94, 104 p. Accompanied by Map 2216, scale 1:126 720 or 1 inch to 2 miles.

Lumbers, S.B. and Milne, V.G.

1979: Ontario Geological Map, East Central Sheet; Ontario Geological Survey, Map 2393, scale 1:1 013 760 or 1 inch to 16 miles. Revised compilation 1976.

Springer, Janet

1978: Ontario Mineral Potential, Parts of North Bay, Deep River, and Ville Marie Sheets, Districts of Nipissing, Parry Sound, and County of Renfrew; Ontario Geological Survey, Preliminary Map P.1510, Mineral Deposits Series, scale 1:250 000. Compilation 1976.



LEGEND

LANDFORM	MATERIAL	TOPOGRAPHY
MORAINAL	b boulders, bouldery	LOCAL RELIEF
ME End moraine	c clay, clayey	H Many high local relief
MG Ground moraine	e gravel, gravelly	M Many moderate local relief
MM Hummocky moraine	f peat, musk	L Many low local relief
GLACIOFLUVIAL	g rubble	VARIETY
GD ice contact delta, river delta, same delta, delta moraine	h sand, sandy	c channelled
GE ice contact, terrace, terrace filling	i silt, silty	d dissected, gulled
GG same name, same terrace, same moraine	j till	l rugged, rugged, cuffed
GO Chertish plain, valley train		p cliffed volcanic rock signature
GLACIOACUSTRINE		k knobby, hummocky
LB Raised (abandoned) beach		p plain
LD Glacioacustrine delta		r rugged
LP Glacioacustrine point		s sloping
ALLUVIAL		t terraced
AP Alluvial plain		u unsculpting to rolling
COLLUVIAL		w washed, reworked
CB Slope failure		
CT Talus pile		
CW Slopewash and debris creep		
ED Sand dunes		
ORGANIC		
OT Organic terrain		
BEDROCK		DRAINAGE
RL Bedrock plateau		SURFACE CONDITION
RR Bedrock knob		W Wet
RS Bedrock scarp		D Dry
RT Bedrock ridge		M Mired wet and dry
RU Bedrock below a drift veneer		B Mired below water table

The letter codes describing the terrain units are made up of four components arranged as follows:

TOPOGRAPHY	LANDFORM	MATERIAL	DRAINAGE
IMG	HN	CL	W

Examples:

- dominant landform: IMG(HN)
material: CL
local relief: H
topographic variety of dominant landform: M
subordinate landform: HN
drainage: W
- dominant landform: IMG(HN)
material: CL
local relief: H
topographic variety of dominant landform: M
subordinate landform: HN
drainage: W

SYMBOLS

Significant end moraine or linear moraine-like feature	Small landslide scar
Well expressed drumlins and drumlin ridges	Sand or gravel pit
All other linear ice-flow features	Quarry or mine workings evident from aerial or field observation (crosscut picks are shown in the area of open excavation)
Esker ridge (continuous, discontinuous; the symbol does not indicate direction of flow)	Other man-made features (rock dumps, tallings, lagoons, landfills, etc.; type of feature mentioned where identifiable)
Abandoned shoreline (continuous, discontinuous)	Steep-walled valleys, often bedrock-controlled features
Local dune area (type and location of individual dunes not indicated)	Talus (defined; infers base of talus triangle indicates downslope side of escarpment)
Abandoned river channel, spillway, or ice marginal channels	Line joining the same terrain units
Escarpment	
Sample location	

NOTE 1:
This map is intended to be an inventory of regional engineering terrain conditions, as determined largely by airborne interpretation. Its purpose is to provide a guide for engineering and resource planning functions. The boundaries of the terrain units shown on the map are approximate only, consistent with a 1:100,000 scale. Site specific investigations are required in order to obtain detailed information for a particular area. The map user should refer to the accompanying report for a fuller description of terrain in the study area.

NOTE 2:
Colour is used to enhance what is considered to be the dominant engineering condition in simple, complex or layered terrain units.

NOTE 3:
Not all letter and graphic symbols shown in the legend necessarily appear on this map sheet.