

THESE TERMS GOVERN YOUR USE OF THIS DOCUMENT

Your use of this Ontario Geological Survey document (the “Content”) is governed by the terms set out on this page (“Terms of Use”). By downloading this Content, you (the “User”) have accepted, and have agreed to be bound by, the Terms of Use.

Content: This Content is offered by the Province of Ontario’s *Ministry of Northern Development and Mines* (MNDM) as a public service, on an “as-is” basis. Recommendations and statements of opinion expressed in the Content are those of the author or authors and are not to be construed as statement of government policy. You are solely responsible for your use of the Content. You should not rely on the Content for legal advice nor as authoritative in your particular circumstances. Users should verify the accuracy and applicability of any Content before acting on it. MNDM does not guarantee, or make any warranty express or implied, that the Content is current, accurate, complete or reliable. MNDM is not responsible for any damage however caused, which results, directly or indirectly, from your use of the Content. MNDM assumes no legal liability or responsibility for the Content whatsoever.

Links to Other Web Sites: This Content may contain links, to Web sites that are not operated by MNDM. Linked Web sites may not be available in French. MNDM neither endorses nor assumes any responsibility for the safety, accuracy or availability of linked Web sites or the information contained on them. The linked Web sites, their operation and content are the responsibility of the person or entity for which they were created or maintained (the “Owner”). Both your use of a linked Web site, and your right to use or reproduce information or materials from a linked Web site, are subject to the terms of use governing that particular Web site. Any comments or inquiries regarding a linked Web site must be directed to its Owner.

Copyright: Canadian and international intellectual property laws protect the Content. Unless otherwise indicated, copyright is held by the Queen’s Printer for Ontario.

It is recommended that reference to the Content be made in the following form: <Author’s last name>, <Initials> <year of publication>. <Content title>; Ontario Geological Survey, <Content publication series and number>, <total number of pages>p.

Use and Reproduction of Content: The Content may be used and reproduced only in accordance with applicable intellectual property laws. *Non-commercial* use of unsubstantial excerpts of the Content is permitted provided that appropriate credit is given and Crown copyright is acknowledged. Any substantial reproduction of the Content or any *commercial* use of all or part of the Content is prohibited without the prior written permission of MNDM. Substantial reproduction includes the reproduction of any illustration or figure, such as, but not limited to graphs, charts and maps. Commercial use includes commercial distribution of the Content, the reproduction of multiple copies of the Content for any purpose whether or not commercial, use of the Content in commercial publications, and the creation of value-added products using the Content.

Contact:

FOR FURTHER INFORMATION ON	PLEASE CONTACT:	BY TELEPHONE:	BY E-MAIL:
The Reproduction of Content	MNDM Publication Services	Local: (705) 670-5691 Toll Free: 1-888-415-9845, ext. 5691 (inside Canada, United States)	Pubsales@ndm.gov.on.ca
The Purchase of MNDM Publications	MNDM Publication Sales	Local: (705) 670-5691 Toll Free: 1-888-415-9845, ext. 5691 (inside Canada, United States)	Pubsales@ndm.gov.on.ca
Crown Copyright	Queen’s Printer	Local: (416) 326-2678 Toll Free: 1-800-668-9938 (inside Canada, United States)	Copyright@gov.on.ca

LES CONDITIONS CI-DESSOUS RÉGISSENT L'UTILISATION DU PRÉSENT DOCUMENT.

Votre utilisation de ce document de la Commission géologique de l'Ontario (le « contenu ») est régie par les conditions décrites sur cette page (« conditions d'utilisation »). En téléchargeant ce contenu, vous (l'« utilisateur ») signifiez que vous avez accepté d'être lié par les présentes conditions d'utilisation.

Contenu : Ce contenu est offert en l'état comme service public par le *ministère du Développement du Nord et des Mines* (MDNM) de la province de l'Ontario. Les recommandations et les opinions exprimées dans le contenu sont celles de l'auteur ou des auteurs et ne doivent pas être interprétées comme des énoncés officiels de politique gouvernementale. Vous êtes entièrement responsable de l'utilisation que vous en faites. Le contenu ne constitue pas une source fiable de conseils juridiques et ne peut en aucun cas faire autorité dans votre situation particulière. Les utilisateurs sont tenus de vérifier l'exactitude et l'applicabilité de tout contenu avant de l'utiliser. Le MDNM n'offre aucune garantie expresse ou implicite relativement à la mise à jour, à l'exactitude, à l'intégralité ou à la fiabilité du contenu. Le MDNM ne peut être tenu responsable de tout dommage, quelle qu'en soit la cause, résultant directement ou indirectement de l'utilisation du contenu. Le MDNM n'assume aucune responsabilité légale de quelque nature que ce soit en ce qui a trait au contenu.

Liens vers d'autres sites Web : Ce contenu peut comporter des liens vers des sites Web qui ne sont pas exploités par le MDNM. Certains de ces sites pourraient ne pas être offerts en français. Le MDNM se dégage de toute responsabilité quant à la sûreté, à l'exactitude ou à la disponibilité des sites Web ainsi reliés ou à l'information qu'ils contiennent. La responsabilité des sites Web ainsi reliés, de leur exploitation et de leur contenu incombe à la personne ou à l'entité pour lesquelles ils ont été créés ou sont entretenus (le « propriétaire »). Votre utilisation de ces sites Web ainsi que votre droit d'utiliser ou de reproduire leur contenu sont assujettis aux conditions d'utilisation propres à chacun de ces sites. Tout commentaire ou toute question concernant l'un de ces sites doivent être adressés au propriétaire du site.

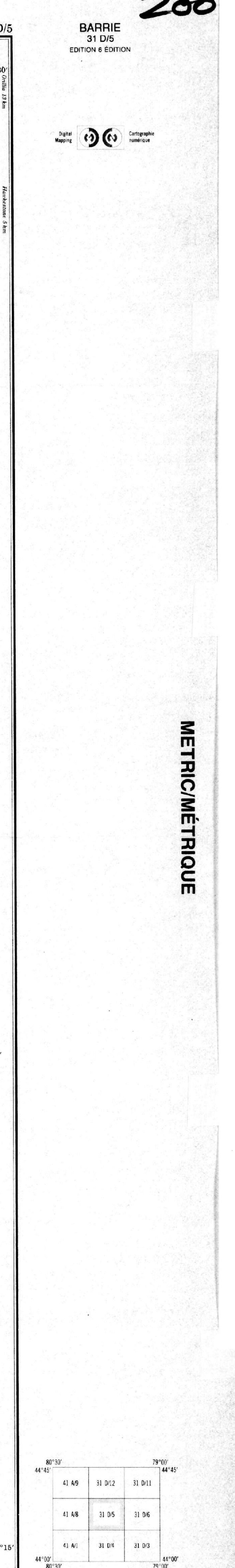
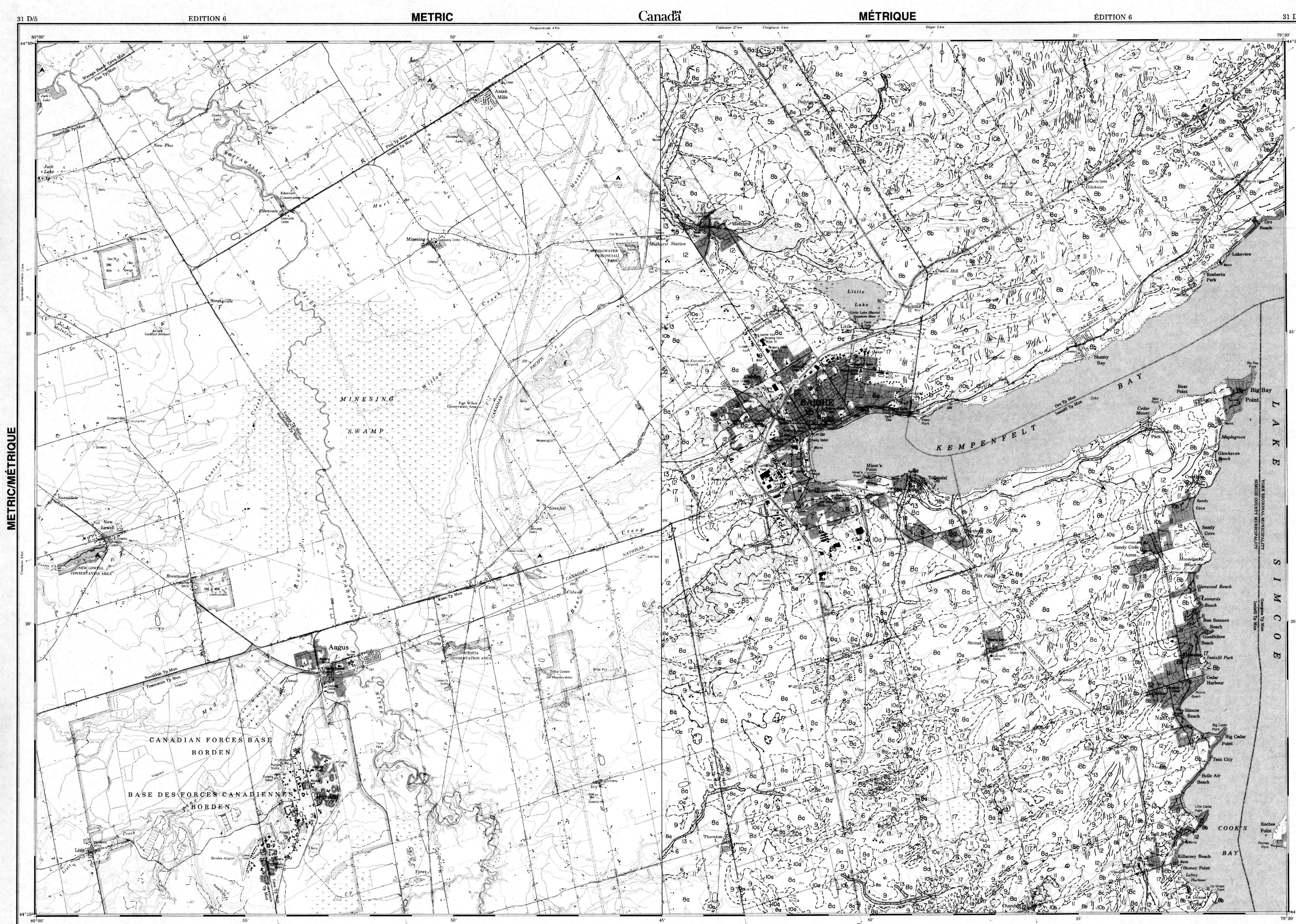
Droits d'auteur : Le contenu est protégé par les lois canadiennes et internationales sur la propriété intellectuelle. Sauf indication contraire, les droits d'auteurs appartiennent à l'Imprimeur de la Reine pour l'Ontario.

Nous recommandons de faire paraître ainsi toute référence au contenu : nom de famille de l'auteur, initiales, année de publication, titre du document, Commission géologique de l'Ontario, série et numéro de publication, nombre de pages.

Utilisation et reproduction du contenu : Le contenu ne peut être utilisé et reproduit qu'en conformité avec les lois sur la propriété intellectuelle applicables. L'utilisation de courts extraits du contenu à des fins *non commerciales* est autorisée, à condition de faire une mention de source appropriée reconnaissant les droits d'auteurs de la Couronne. Toute reproduction importante du contenu ou toute utilisation, en tout ou en partie, du contenu à des fins *commerciales* est interdite sans l'autorisation écrite préalable du MDNM. Une reproduction jugée importante comprend la reproduction de toute illustration ou figure comme les graphiques, les diagrammes, les cartes, etc. L'utilisation commerciale comprend la distribution du contenu à des fins commerciales, la reproduction de copies multiples du contenu à des fins commerciales ou non, l'utilisation du contenu dans des publications commerciales et la création de produits à valeur ajoutée à l'aide du contenu.

Renseignements :

POUR PLUS DE RENSEIGNEMENTS SUR	VEUILLEZ VOUS ADRESSER À :	PAR TÉLÉPHONE :	PAR COURRIEL :
la reproduction du contenu	Services de publication du MDNM	Local : (705) 670-5691 Numéro sans frais : 1 888 415-9845, poste 5691 (au Canada et aux États-Unis)	Pubsales@ndm.gov.on.ca
l'achat des publications du MDNM	Vente de publications du MDNM	Local : (705) 670-5691 Numéro sans frais : 1 888 415-9845, poste 5691 (au Canada et aux États-Unis)	Pubsales@ndm.gov.on.ca
les droits d'auteurs de la Couronne	Imprimeur de la Reine	Local : 416 326-2678 Numéro sans frais : 1 800 668-9938 (au Canada et aux États-Unis)	Copyright@gov.on.ca



BARRIE
31 D/5
EDITION 6

Mines and Minerals Division
Ontario Geological Survey

Open File Map 200
Quaternary Geology of the Eastern Half of the Barrie and Elmvale Map Areas

Scale 1:50 000

UNEDITED MANUSCRIPT
This unedited Open File Map is prepared for viewing in order to provide early access to recent geoscience mapping. It is available for use by the public and is not intended for publication. The user should refer to the original map for the most accurate information. This unedited Open File Map is also available for sale at the National Resources Information Centre.

Information from this publication may be quoted if credit is given. It is recommended that reference to this map be made in the following form:
Barnett, P.J. 1982. Quaternary geology of the eastern half of the Barrie and Elmvale map areas. Ontario Geological Survey, Open File Map 200, scale 1:50 000.

Information from this publication may be quoted if credit is given. It is recommended that reference to this map be made in the following form:
Barnett, P.J. 1982. Quaternary geology of the eastern half of the Barrie and Elmvale map areas. Ontario Geological Survey, Open File Map 200, scale 1:50 000.

Mines and Minerals Division
Ontario Geological Survey

Open File Map
Quaternary Geology of the Eastern Half of the Barrie Area
Ontario

UNEDITED MANUSCRIPT
This unedited Open File Map is prepared for viewing in order to provide early access to recent geoscience mapping. It is available for use by the public and is not intended for publication. The user should refer to the original map for the most accurate information. This unedited Open File Map is also available for sale at the National Resources Information Centre.

Information from this publication may be quoted if credit is given. It is recommended that reference to this map be made in the following form:
Barnett, P.J. 1982. Quaternary geology of the eastern half of the Barrie and Elmvale map areas. Ontario Geological Survey, Open File Map 200, scale 1:50 000.

Mines and Minerals Division
Ontario Geological Survey



BARRIE
31 D/5
EDITION 6

Mines and Minerals Division
Ontario Geological Survey

Open File Map
Quaternary Geology of the Eastern Half of the Barrie Area
Ontario

UNEDITED MANUSCRIPT
This unedited Open File Map is prepared for viewing in order to provide early access to recent geoscience mapping. It is available for use by the public and is not intended for publication. The user should refer to the original map for the most accurate information. This unedited Open File Map is also available for sale at the National Resources Information Centre.

Information from this publication may be quoted if credit is given. It is recommended that reference to this map be made in the following form:
Barnett, P.J. 1982. Quaternary geology of the eastern half of the Barrie and Elmvale map areas. Ontario Geological Survey, Open File Map 200, scale 1:50 000.

Mines and Minerals Division
Ontario Geological Survey

BARRIE
31 D/5
EDITION 6

Ministry of Northern Development and Mines
Ontario

Mines and Minerals Division
Ontario Geological Survey

Open File Map 200
Quaternary Geology of the Eastern Half of the Barrie and Elmvale Map Areas

Scale 1:50 000

UNEDITED MANUSCRIPT
This unedited Open File Map is prepared for viewing in order to provide early access to recent geoscience mapping. It is available for use by the public and is not intended for publication. The user should refer to the original map for the most accurate information. This unedited Open File Map is also available for sale at the National Resources Information Centre.

Information from this publication may be quoted if credit is given. It is recommended that reference to this map be made in the following form:
Barnett, P.J. 1982. Quaternary geology of the eastern half of the Barrie and Elmvale map areas. Ontario Geological Survey, Open File Map 200, scale 1:50 000.

Mines and Minerals Division
Ontario Geological Survey

BARRIE
31 D/5
EDITION 6

Ministry of Northern Development and Mines
Ontario

Mines and Minerals Division
Ontario Geological Survey

Open File Map
Quaternary Geology of the Eastern Half of the Barrie Area
Ontario

UNEDITED MANUSCRIPT
This unedited Open File Map is prepared for viewing in order to provide early access to recent geoscience mapping. It is available for use by the public and is not intended for publication. The user should refer to the original map for the most accurate information. This unedited Open File Map is also available for sale at the National Resources Information Centre.

Information from this publication may be quoted if credit is given. It is recommended that reference to this map be made in the following form:
Barnett, P.J. 1982. Quaternary geology of the eastern half of the Barrie and Elmvale map areas. Ontario Geological Survey, Open File Map 200, scale 1:50 000.

Mines and Minerals Division
Ontario Geological Survey

BARRIE
31 D/5
EDITION 6

Ministry of Northern Development and Mines
Ontario

Mines and Minerals Division
Ontario Geological Survey

Open File Map 200
Quaternary Geology of the Eastern Half of the Barrie and Elmvale Map Areas

Scale 1:50 000

UNEDITED MANUSCRIPT
This unedited Open File Map is prepared for viewing in order to provide early access to recent geoscience mapping. It is available for use by the public and is not intended for publication. The user should refer to the original map for the most accurate information. This unedited Open File Map is also available for sale at the National Resources Information Centre.

Information from this publication may be quoted if credit is given. It is recommended that reference to this map be made in the following form:
Barnett, P.J. 1982. Quaternary geology of the eastern half of the Barrie and Elmvale map areas. Ontario Geological Survey, Open File Map 200, scale 1:50 000.

Mines and Minerals Division
Ontario Geological Survey

BARRIE
31 D/5
EDITION 6

Ministry of Northern Development and Mines
Ontario

Mines and Minerals Division
Ontario Geological Survey

Open File Map
Quaternary Geology of the Eastern Half of the Barrie Area
Ontario

UNEDITED MANUSCRIPT
This unedited Open File Map is prepared for viewing in order to provide early access to recent geoscience mapping. It is available for use by the public and is not intended for publication. The user should refer to the original map for the most accurate information. This unedited Open File Map is also available for sale at the National Resources Information Centre.

Information from this publication may be quoted if credit is given. It is recommended that reference to this map be made in the following form:
Barnett, P.J. 1982. Quaternary geology of the eastern half of the Barrie and Elmvale map areas. Ontario Geological Survey, Open File Map 200, scale 1:50 000.

Mines and Minerals Division
Ontario Geological Survey

BARRIE
31 D/5
EDITION 6

Ministry of Northern Development and Mines
Ontario

Mines and Minerals Division
Ontario Geological Survey

Open File Map 200
Quaternary Geology of the Eastern Half of the Barrie and Elmvale Map Areas

Scale 1:50 000

UNEDITED MANUSCRIPT
This unedited Open File Map is prepared for viewing in order to provide early access to recent geoscience mapping. It is available for use by the public and is not intended for publication. The user should refer to the original map for the most accurate information. This unedited Open File Map is also available for sale at the National Resources Information Centre.

Information from this publication may be quoted if credit is given. It is recommended that reference to this map be made in the following form:
Barnett, P.J. 1982. Quaternary geology of the eastern half of the Barrie and Elmvale map areas. Ontario Geological Survey, Open File Map 200, scale 1:50 000.

Mines and Minerals Division
Ontario Geological Survey

BARRIE
31 D/5
EDITION 6

Ministry of Northern Development and Mines
Ontario

Mines and Minerals Division
Ontario Geological Survey

Open File Map
Quaternary Geology of the Eastern Half of the Barrie Area
Ontario

UNEDITED MANUSCRIPT
This unedited Open File Map is prepared for viewing in order to provide early access to recent geoscience mapping. It is available for use by the public and is not intended for publication. The user should refer to the original map for the most accurate information. This unedited Open File Map is also available for sale at the National Resources Information Centre.

Information from this publication may be quoted if credit is given. It is recommended that reference to this map be made in the following form:
Barnett, P.J. 1982. Quaternary geology of the eastern half of the Barrie and Elmvale map areas. Ontario Geological Survey, Open File Map 200, scale 1:50 000.

Mines and Minerals Division
Ontario Geological Survey

BARRIE
31 D/5
EDITION 6

Ministry of Northern Development and Mines
Ontario

Mines and Minerals Division
Ontario Geological Survey

Open File Map 200
Quaternary Geology of the Eastern Half of the Barrie and Elmvale Map Areas

Scale 1:50 000

UNEDITED MANUSCRIPT
This unedited Open File Map is prepared for viewing in order to provide early access to recent geoscience mapping. It is available for use by the public and is not intended for publication. The user should refer to the original map for the most accurate information. This unedited Open File Map is also available for sale at the National Resources Information Centre.

Information from this publication may be quoted if credit is given. It is recommended that reference to this map be made in the following form:
Barnett, P.J. 1982. Quaternary geology of the eastern half of the Barrie and Elmvale map areas. Ontario Geological Survey, Open File Map 200, scale 1:50 000.

Mines and Minerals Division
Ontario Geological Survey

BARRIE
31 D/5
EDITION 6

Ministry of Northern Development and Mines
Ontario

Mines and Minerals Division
Ontario Geological Survey

Open File Map
Quaternary Geology of the Eastern Half of the Barrie Area
Ontario

UNEDITED MANUSCRIPT
This unedited Open File Map is prepared for viewing in order to provide early access to recent geoscience mapping. It is available for use by the public and is not intended for publication. The user should refer to the original map for the most accurate information. This unedited Open File Map is also available for sale at the National Resources Information Centre.

Information from this publication may be quoted if credit is given. It is recommended that reference to this map be made in the following form:
Barnett, P.J. 1982. Quaternary geology of the eastern half of the Barrie and Elmvale map areas. Ontario Geological Survey, Open File Map 200, scale 1:50 000.

Mines and Minerals Division
Ontario Geological Survey

LEGEND

PHANEROZOIC

CENOZOIC

QUATERNARY

RECENT

17 Fluvial sediments: very fine- to coarse-grained sand, gravel, silt and clay.

18 Wetland sediments: peat, muck and silt.

16 Lacustrine beach and bar sediments: gravel, sandy gravel and gravelly sand.

15 Lacustrine coarse-grained sediments: very fine- to medium-grained sand, silt, minor clay.

14 Lacustrine fine-grained sediments: silt- and clay-dominated rhythmites.

PLEISTOCENE

13 Fluvial or deltaic sediments: very fine- to coarse-grained sand, minor gravel, silt and clay.

12 Glaciolacustrine beach and bar sediments: gravel, sandy gravel and gravelly sand.

11 Glaciolacustrine coarse-grained sediments: very fine- to medium-grained sand, silt, minor clay.

10 Glaciolacustrine fine-grained sediments: 10a silt-dominated rhythmites, 10b clay and silt rhythmites.

9 Glaciolacustrine ice-contact stratified sediments: fine- to very coarse-grained sand, gravelly sand and gravel, minor amounts of silt, clay and flowfill.

SYMBOLS

Geological boundary (approximate, gradational).

Drumlin.

Glacial fluting.

Crag-and-tail.

End moraine ridge crest.

Ice-contact slope.

Tunnel valley or channel.

Area of ice-disintegration ridges.

Kettle hole; kame.

Area of hummocky topography or area of ovoidic kettles.

Fluvial terrace escarpment.

Abandoned shore bluff.

Abandoned beach, bar or spit.

Area of small dunes.

Landslide scar.

Margin of large slump block.

Lineation on air photographs.

PERMIAN

2 Bedrock: exposed or with a very thin, less than 1 m, cover of Quaternary sediments.

PALAEZOIC

1 Bedrock: exposed or with a very thin, less than 1 m, cover of Quaternary sediments.

NOTES:

In general sediments less than 1 m thick are not indicated on this map.

Unit not present on this map.

BARRIE
ONTARIO

Scale 1:50 000 Echelle

CONVERSION TABLE FOR ELEVATION

FOOT (ft) TO METRE (m)

100 30.48

200 60.96

300 91.44

400 121.92

500 152.40

600 182.88

700 213.36

800 243.84

900 274.32

1000 304.80

1100 335.28

1200 365.76

1300 396.24

1400 426.72

1500 457.20

1600 487.68

1700 518.16

1800 548.64

1900 579.12

2000 609.60

2100 640.08

2200 670.56

2300 701.04

2400 731.52

2500 762.00

2600 792.48

2700 822.96

2800 853.44

2900 883.92

3000 914.40

3100 944.88

3200 975.36

3300 1005.84

3400 1036.32

3500 1066.80

3600 1097.28

3700 1127.76

3800 1158.24

3900 1188.72

4000 1219.20

4100 1249.68

4200 1280.16

4300 1310.64

4400 1341.12

4500 1371.60

4600 1402.08

4700 1432.56

4800 1463.04

4900 1493.52

5000 1524.00

5100 1554.48

5200 1584.96

5300 1615.44

5400 1645.92

5500 1676.40

5600 1706.88

5700 1737.36

5800 1767.84

5900 1798.32

6000 1828.80

6100 1859.28

6200 1889.76

6300 1920.24

6400 1950.72

6500 1981.20

6600 2011.68

6700 2042.16

6800 2072.64

6900 2103.12

7000 2133.60

7100 2164.08

7200 2194.56

7300 2225.04

7400 2255.52

7500 2286.00

7600 2316.48

7700 2346.96

7800 2377.44

7900 2407.92

8000 2438.40

8100 2468.88

8200 2499.36

8300 2529.84

8400 2560.32

8500 2590.80

8600 2621.28

8700 2651.76

8800 2682.24

8900 2712.72

9000 2743.20

9100 2773.68

9200 2804.16

9300 2834.64

9400 2865.12

9500 2895.60

9600 2926.08

9700 2956.56

9800 2987.04

9900 3017.52

10000 3048.00

BARRIE
ONTARIO

Scale 1:50 000 Echelle

CONVERSION TABLE FOR ELEVATION

FOOT (ft) TO METRE (m)

100 30.48

200 60.96

300 91.44

400 121.92

500 152.40

600 182.88

700 213.36

800 243.84

900 274.32

1000 304.80

1100 335.28

1200 365.76

1300 396.24

1400 426.72

1500 457.20

1600 487.68

1700 518.16

1800 548.64

1900 579.12

2000 609.60

2100 640.08

2200 670.56

2300 701.04

2400 731.52

2500 762.00

2600 792.48

2700 822.96

2800 853.44

2900 883.92

3000 914.40

3100 944.88

3200 975.36

3300 1005.84

3400 1036.32

3500 1066.80

3600 1097.28

3700 1127.76

3800 1158.24

3900 1188.72

4000 1219.20

4100 1249.68

4200 1280.16

4300 1310.64

4400 1341.12

4500 1371.60

4600 1402.08

4700 1432.56

4800 1463.04

4900 1493.52

5000 1524.00

5100 1554.48

5200 1584.96

5300 1615.44

5400 1645.92

5500 1676.40

5600 1706.88

5700 1737.36

5800 1767.84

5900 1798.32

6000 1828.80

6100 1859.28

6200 1889.76

6300 1920.24

6400 1950.72

6500 1981.20

6600 2011.68

6700 2042.16

6800 2072.64

6900 2103.12

7000 2133.60

7100 2164.08

7200 2194.56

7300 2225.04

7400 2255.52

7500 2286.00

7600 2316.48

7700 2346.96

7800 2377.44

7900 2407.92

8000 2438.40

8100 2468.88

8200 2499.36

8300 2529.84

8400 2560.32

8500 2590.80

8600 2621.28

8700 2651.76

8800 2682.24

8900 2712.72

9000 2743.20

9100 2773.68

9200 2804.16

9300 2834.64

9400 2865.12

9500 2895.60

9600 2926.08

9700 2956.56

9800 2987.04

9900 3017.52

10000 3048.00

BARRIE
ONTARIO

Scale 1:50 000 Echelle

CONVERSION TABLE FOR ELEVATION

FOOT (ft) TO METRE (m)

100 30.48

200 60.96

300 91.44

400 121.92

500 152.40

600 182.88

700 213.36

800 243.84

900 274.32

1000 304.80

1100 335.28

1200 365.76

1300 396.24

1400 426.72

1500 457.20

1600 487.68

1700 518.16

1800 548.64

1900 579.12

2000 609.60

2100 640.08

2200 670.56

2300 701.04

2400 731.52

2500 762.00

2600 792.48

2700 822.96

2800 853.44

2900 883.92

3000 914.40

3100 944.88

3200 975.36

3300 1005.84

3400 1036.32

3500 1066.80

3600 1097.28

3700 1127.76

3800 1158.24

3900 1188.72

4000 1219.20

4100 1249.68

4200 1280.16

4300 1310.64

4400 1341.12

4500 1371.60

4600 1402.08

4700 1432.56

4800 1463.04

4900 1493.52

5000 1524.00

5100 1554.48

5200 1584.96

5300 1615.44

5400 1645.92

5500 1676.40

5600 1706.88

5700 1737.36

5800 1767.84

5900 1798.32

6000 1828.80

6100 1859.28

6200 1889.76

6300 1920.24

6400 1950.72

6500 1981.20

6600 2011.68

6700 2042.16

6800 2072.64

6900 2103.12

7000 2133.60

7100 2164.08

7200 2194.56

7300 2225.04

7400 2255.52

7500 2286.00

7600 2316.48

7700 2346.96

7800 2377.44

7900 2407.92

8000 2438.40

8100 2468.88

8200 2499.36

8300 2529.84

8400 2560.32

8500 2590.80

8600 2621.28

8700 2651.76

8800 2682.24

8900 2712.72

9000 2743.20

9100 2773.68

9200 2804.16

9300 2834.64

9400 2865.12

9500 2895.60

9600 2926.08

9700 2956.56

9800 2987.04

9900 3017.52

10000 3048.00

BARRIE
ONTARIO

Scale 1:50 000 Echelle

CONVERSION TABLE FOR ELEVATION

FOOT (ft) TO METRE (m)

100 30.48

200 60.96

300 91.44

400 121.92

500 152.40

600 182.88

700 213.36

800 243.84

900 274.32

1000 304.80

1100 335.28

1200 365.76

1300 396.24

1400 426.72

1500 457.20

1600 487.68

1700 518.16

1800 548.64

1900 579.12

2000 609.60

2100 640.08

2200 670.56

2300 701.04

2400 731.52

2500 762.00

2600 792.48

2700 822.96

2800 853.44

2900 883.92

3000 914.40

3100 944.88

3200 975.36

3300 1005.84

3400 1036.32

3500 1066.80

3600 1097.28

3700 1127.76

3800 1158.24

3900 1188.72

4000 1219.20

4100 1249.68

4200 1280.16

4300 1310.64

4400 1341.12

4500 1371.60

4600 1402.08

4700 1432.56

4800 1463.04

4900 1493.52

5000 1524.00

5100 1554.48

5200 1584.96

5300 1615.44

5400 1645.92

5500 1676.40

5600 1706.88

5700 1737.36

5800 1767.84

5900 1798.32

6000 1828.80

6100 1859.28

6200 1889.76

6300 1920.24

6400 1950.72

6500 1981.20

6600 2011.68

6700 2042.16

6800 2072.64

6900 2103.12

7000 2133.60

7100 2164.08

7200 2194.56

7300 2225.04

7400 2255.52

7500 2286.00

7600 2316.48

7700 2346.96

7800 2377.44

7900 2407.92

8000 2438.40

8100 2468.88

8200 2499.36

8300 2529.84

8400 2560.32

8500 2590.80

8600 2621.28

8700 2651.76

8800 2682.24

8900 2712.72

9000 2743.20

9100 2773.68

9200 2804.16

9300 2834.64

9400 2865.12

9500 2895.60

9600 2926.08

9700 2956.56

9800 2987.04

9900 3017.52

10000 3048.00

BARRIE
ONTARIO

Scale 1:50 000 Echelle

CONVERSION TABLE FOR ELEVATION

FOOT (ft) TO METRE (m)

100 30.48

200 60.96

300 91.44

400 121.92

500 152.40

600 182.88

700 213.36

800 243.84

900 274.32

1000 304.80

1100 335.28

1200 365.76

1300 396.24

1400 426.72

1500 457.20

1600 487.68

1700 518.16

1800 548.64

1900 57

