

## THESE TERMS GOVERN YOUR USE OF THIS DOCUMENT

***Your use of this Ontario Geological Survey document (the “Content”) is governed by the terms set out on this page (“Terms of Use”). By downloading this Content, you (the “User”) have accepted, and have agreed to be bound by, the Terms of Use.***

**Content:** This Content is offered by the Province of Ontario’s *Ministry of Northern Development and Mines* (MNDM) as a public service, on an “as-is” basis. Recommendations and statements of opinion expressed in the Content are those of the author or authors and are not to be construed as statement of government policy. You are solely responsible for your use of the Content. You should not rely on the Content for legal advice nor as authoritative in your particular circumstances. Users should verify the accuracy and applicability of any Content before acting on it. MNDM does not guarantee, or make any warranty express or implied, that the Content is current, accurate, complete or reliable. MNDM is not responsible for any damage however caused, which results, directly or indirectly, from your use of the Content. MNDM assumes no legal liability or responsibility for the Content whatsoever.

**Links to Other Web Sites:** This Content may contain links, to Web sites that are not operated by MNDM. Linked Web sites may not be available in French. MNDM neither endorses nor assumes any responsibility for the safety, accuracy or availability of linked Web sites or the information contained on them. The linked Web sites, their operation and content are the responsibility of the person or entity for which they were created or maintained (the “Owner”). Both your use of a linked Web site, and your right to use or reproduce information or materials from a linked Web site, are subject to the terms of use governing that particular Web site. Any comments or inquiries regarding a linked Web site must be directed to its Owner.

**Copyright:** Canadian and international intellectual property laws protect the Content. Unless otherwise indicated, copyright is held by the Queen’s Printer for Ontario.

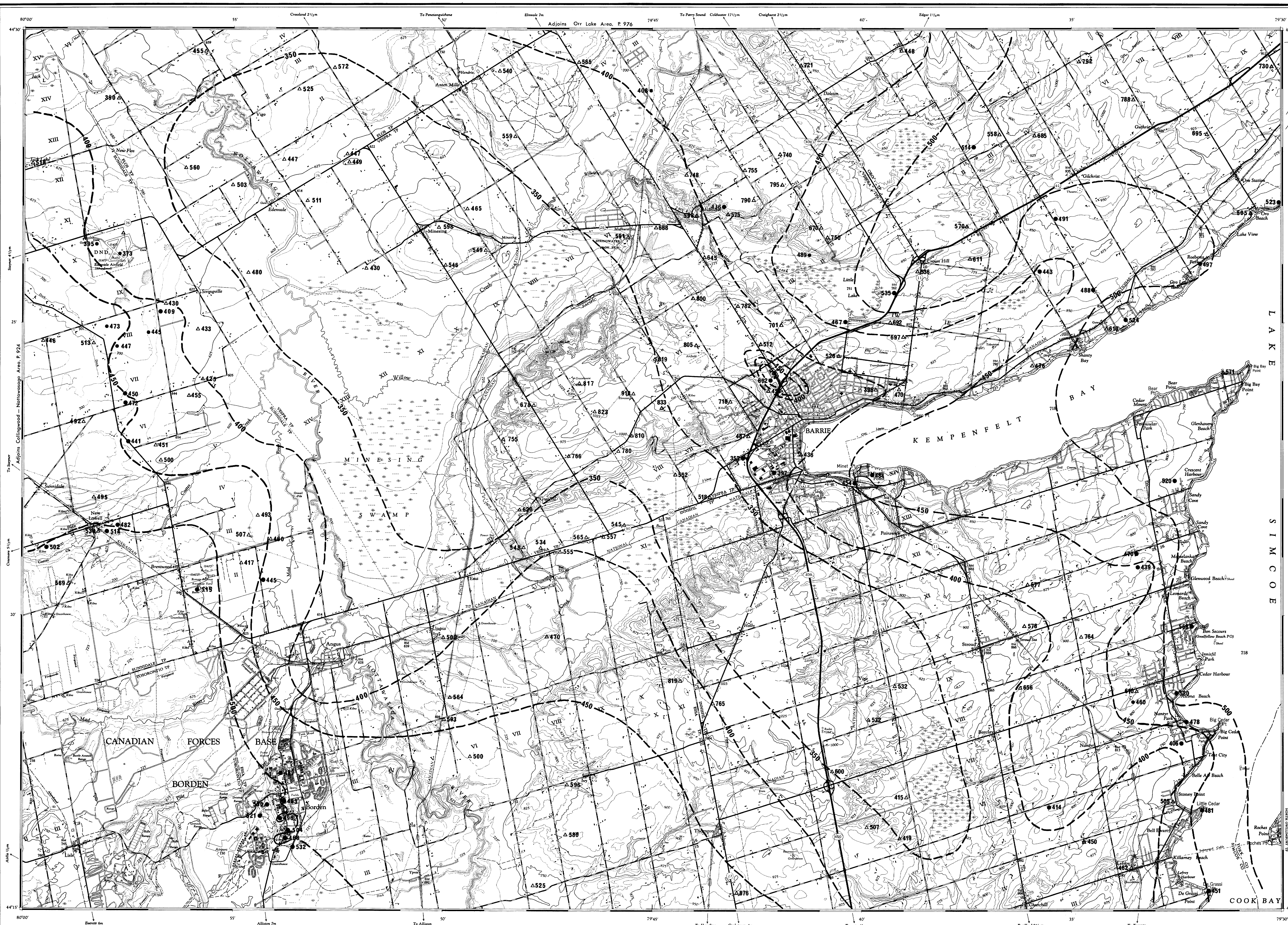
It is recommended that reference to the Content be made in the following form:

<Author’s last name>, <Initials> <year of publication>. <Content title>; Ontario Geological Survey, <Content publication series and number>, <scale>.

**Use and Reproduction of Content:** The Content may be used and reproduced only in accordance with applicable intellectual property laws. *Non-commercial* use of unsubstantial excerpts of the Content is permitted provided that appropriate credit is given and Crown copyright is acknowledged. Any substantial reproduction of the Content or any *commercial* use of all or part of the Content is prohibited without the prior written permission of MNDM. Substantial reproduction includes the reproduction of any illustration or figure, such as, but not limited to graphs, charts and maps. Commercial use includes commercial distribution of the Content, the reproduction of multiple copies of the Content for any purpose whether or not commercial, use of the Content in commercial publications, and the creation of value-added products using the Content.

### Contact:

FOR FURTHER INFORMATION ON	PLEASE CONTACT:	BY TELEPHONE:	BY E-MAIL:
The Reproduction of the EIP or Content	MNDM Publication Services	Local: (705) 670-5691 Toll Free: 1-888-415-9845, ext. 5691 (inside Canada, United States)	<a href="mailto:Pubsales.ndm@ontario.ca">Pubsales.ndm@ontario.ca</a>
The Purchase of MNDM Publications	MNDM Publication Sales	Local: (705) 670-5691 Toll Free: 1-888-415-9845, ext. 5691 (inside Canada, United States)	<a href="mailto:Pubsales.ndm@ontario.ca">Pubsales.ndm@ontario.ca</a>
Crown Copyright	Queen’s Printer	Local: (416) 326-2678 Toll Free: 1-800-668-9938 (inside Canada, United States)	<a href="mailto:Copyright@gov.on.ca">Copyright@gov.on.ca</a>



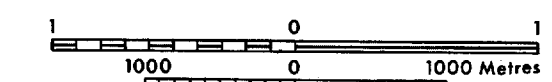
Ontario  
Division of Mines

HONOURABLE LEO BERNIER, Minister of Natural Resources  
 Dr. J. K. REYNOLDS, Deputy Minister of Natural Resources  
 G. A. Jewett, Executive Director, Division of Mines E. G. Pye, Director, Geological Branch

PRELIMINARY MAP P.979  
**BEDROCK TOPOGRAPHY SERIES**  
**BARRIE AREA**

SOUTHERN ONTARIO

Scale: 1:50,000  
 1.25 inches to 1 mile approximately



NTS Reference: 31 D/5

© ODM 1974

Parts of this publication may be quoted if credit is given to the Ontario Division of Mines and the material is properly referenced.

**SYMBOLS**

- 476 Well which penetrates bedrock, with elevation of bedrock surface in feet.
- △ 532 Well which does not penetrate bedrock, with elevation of base of well in feet.
- 500 Contours on bedrock surface (50 foot contour interval); approximate elevation, assumed elevation (based on available data).

**BEDROCK TOPOGRAPHY**

This map is based on subsurface data in the files of The Hydrologic Data Branch, Ontario Ministry of the Environment. Additional information has been obtained from maps published by the Geological Survey of Canada. Some field checking of data was undertaken but other possible errors in the records remain uncorrected. Bedrock surface contours are interpretive and will require revision as more data become available.

**REFERENCES**

- Liberty, B.A. 1969: Paleozoic Geology of the Lake Simcoe Area, Ontario; Geol. Surv. Canada, Mem. 355; 201p. Accompanied by Map 1228A, scale 1:253,440 or 1 inch to 4 miles.
- Deane, R.E. 1950: Pleistocene Geology of the Lake Simcoe District, Ontario; Geol. Surv. Canada, Mem. 256; 108p. Accompanied by two maps, scale 1 inch to 2 miles (1:126,720).

Issued 1974.

Parts of this publication may be quoted if credit is given to the Ontario Division of Mines. It is recommended that reference to this map be made in the following form:

Burwasser, G.J., and Ford, M.J.  
 1974: Bedrock Topography of the Barrie Area, Southern Ontario; Ontario Div. Mines, Prelim. Map P.979, Bedrock Topography Ser., scale 1:50,000. Geological completion, 1974.